



DT7K

ELECTRIC 7,000 FT-LB CRANE



A light-weight, simplified, lower-cost alternative to our full featured ET series cranes. The boom is manually telescopic from 6 to 10 ft and features a 3-position manual boom elevation system with the weight of the boom spring counterbalanced for quick one-hand raising and lowering.

LIFTING CAPACITIES	
REACH (FT)	CAPACITY (LBS)
6	1,200
8	900
10	700

See Back Page for Complete Capacity Chart

FEATURES

- ◆ 2,200 lb Maximum Lifting Capacity
- ◆ 7,000 ft-lb Moment Rating
- ◆ Electric 12V Power
- ◆ Venturo Heavy-Duty Electric Winch (meets ANSI B30.5)
- ◆ Spring counterbalanced, 3-position manual boom elevation
- ◆ Manual boom extension 6-10 ft.
- ◆ Continuous Manual Rotation with 8 position base lock to hold mast firmly in position while in use and while traveling
- ◆ Load hook tie down eye built into base

STANDARD EQUIPMENT

- ◆ Remote Control Pendant: 15 ft Cord with Quick Disconnect
- ◆ 50 ft of 3/16" Wire Rope
- ◆ Snatch Block with Swivel Hook and Safety Latch
- ◆ Master Disconnect Switch
- ◆ Battery Cable: 25 ft, 4 Gauge
- ◆ Weight: 285 lbs

OPTIONAL EQUIPMENT

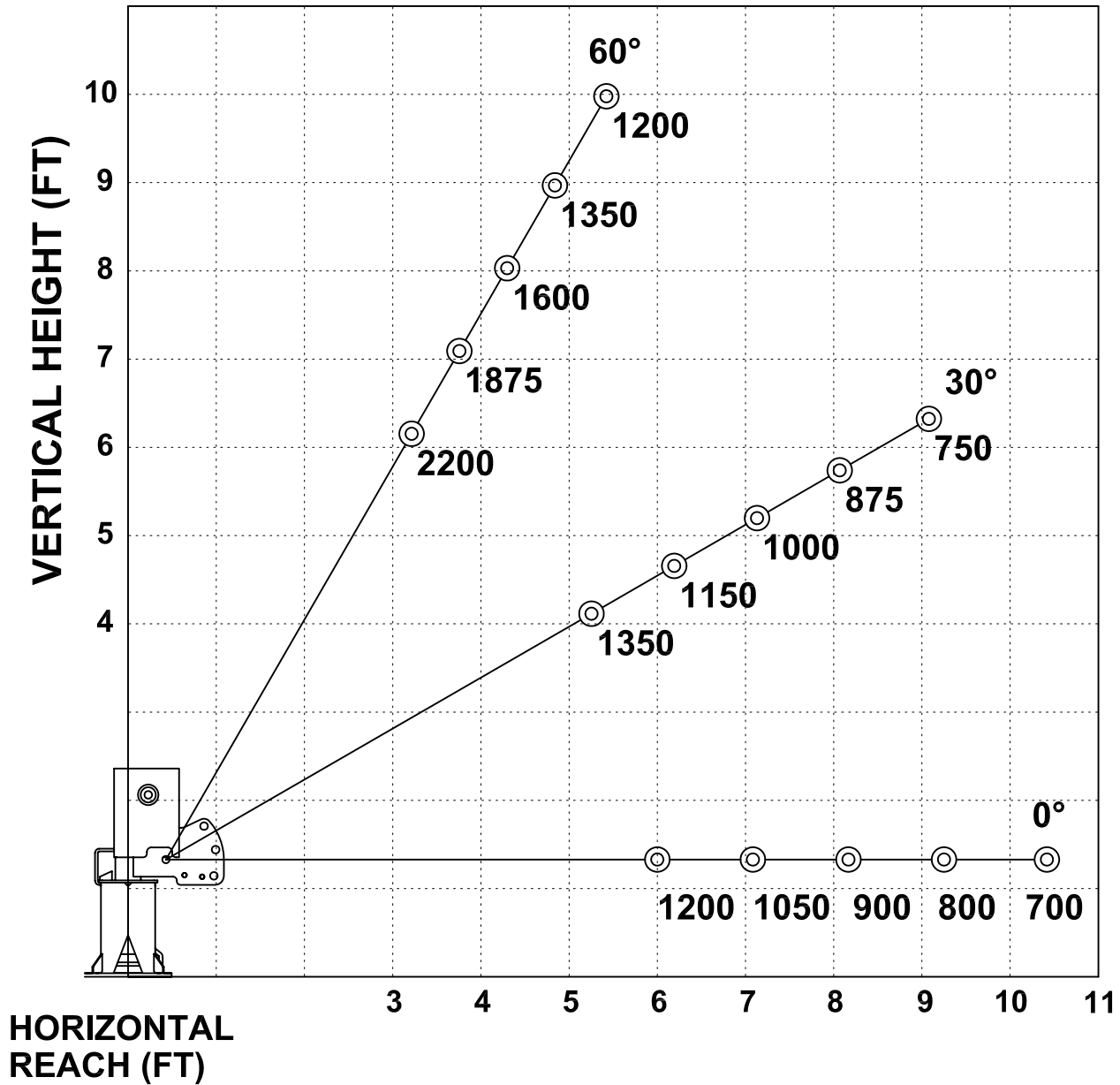
- ◆ Mounting Pedestal for increased working heights
- ◆ Outrigger Packages for all styles of bodies
- ◆ Quick Disconnect battery cable plug/socket



12110 BEST PLACE
CINCINNATI OH 45241
8 0 0 . 2 2 6 . 2 2 3 8
FAX 513.326.5427
www.venturo.com

Specifications subject to change without notice.

DT7K- 6 TO 10 FT. BOOM MAXIMUM CAPACITY CHART



**MUST USE SNATCH BLOCK
FOR LOADS OF 1200 LBS.
AND GREATER**