



# HT40KX



**FULLY HYDRAULIC  
40,000 FT-LB CRANE**

## FEATURES

- ◆ 6,000 lb Maximum Lifting Capacity
- ◆ 40,000 ft-lb Moment Rating
- ◆ Fully Hydraulic Power
- ◆ Hexagonal Boom Construction
- ◆ Power Rotation 400°
- ◆ Meets ANSI B30.5 Safety Standards
- ◆ Meets OSHA 1910.180 Requirements

### HT40KX-P

- ◆ **Standard Feature Group:**
- ◆ Proportional control valve
- ◆ Pendant with variable speed trigger switch
- ◆ Fully hydraulic boom extension 10-20 ft
- ◆ High Speed Winch: 60 ft/min
- ◆ Hydraulic requirements: 12 GPM, 25 gal reservoir

### HT40KX

- ◆ **Basic Feature Group available at Significant Savings:**
- ◆ Non-proportional control valve
- ◆ Pendant with pre-set speed toggle switches
- ◆ Single-stage hydraulic extension 10-16 ft
- ◆ Manual boom extension 16-20 ft
- ◆ Winch speed: 18 ft/min
- ◆ Hydraulic requirements: 2.6 GPM, 10 gal reservoir

## MINIMUM REQUIREMENTS

- ◆ 14,500 lb GVWR Chassis
- ◆ Outriggers - Front and Rear
- ◆ PTO, Pump, and Reservoir

LIFTING CAPACITIES	
REACH (FT)	CAPACITY (LBS)
6	6,000
10	4,400
16	2,550
20	2,000

See Back Page for Complete Capacity Chart

## STANDARD EQUIPMENT

- ◆ Capacity Overload Shut-Off System
- ◆ Anti-Two-Blocking System
- ◆ 100 ft of 3/8" Aircraft-Quality Wire Rope
- ◆ Remote Control Pendant: 25 ft Cord and Quick Disconnect
- ◆ Snatch Block with Swivel Hook Safety Latch
- ◆ Cable Overhaul Weight

## OPTIONAL EQUIPMENT

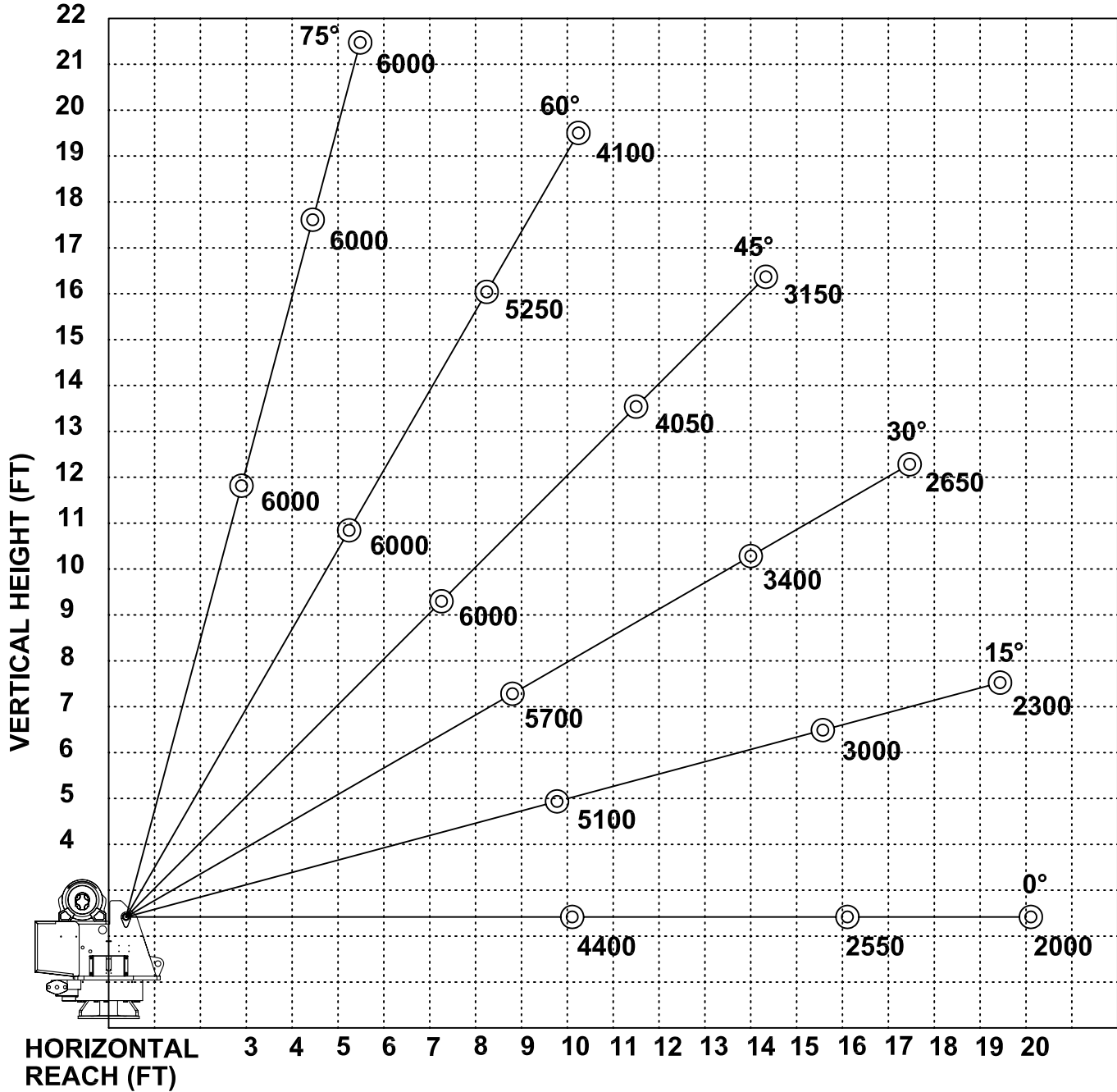
- ◆ Radio Remote Controls
- ◆ Hydraulic and Manual Outrigger Packages
- ◆ Hydraulic Pumps and Reservoirs
- ◆ Mounting Pedestal for Platform Bodies
- ◆ Boom Rests



12110 BEST PLACE  
CINCINNATI OH 45241  
8 0 0 . 2 2 6 . 2 2 3 8  
FAX 513.326.5427  
www.venturo.com

Specifications subject to change without notice.

## HT40KX - 10-16-20 BOOM MAXIMUM CAPACITY CHART



**MUST USE SNATCH BLOCK  
FOR LOADS OF 3000 LBS.  
AND GREATER**