



# HYDRAULIC CRANES HT40KX-25



MAX. CAPACITY  
6,000 LBS

CRANE RATING  
40,000 FT-LBS

MAX. REACH  
25 FT

MIN. GVWR  
14,500 LBS

CONTROLS  
HYDRAULIC

## FEATURES

- **FULL-HYDRAULIC EXTENSION**  
The standard boom lengths for the HT40KX is 25'.
- **POWERFUL HYDRAULIC WINCH**  
The HT series cranes feature a high-efficiency planetary gear reduction with a spring-applied hydraulic released multi-disk brake driven by a hydraulic gear motor.
- **PROPORTIONAL CONTROLS**  
The HT40KX is offered in proportional control giving the operator flexibility in hydraulic speeds.

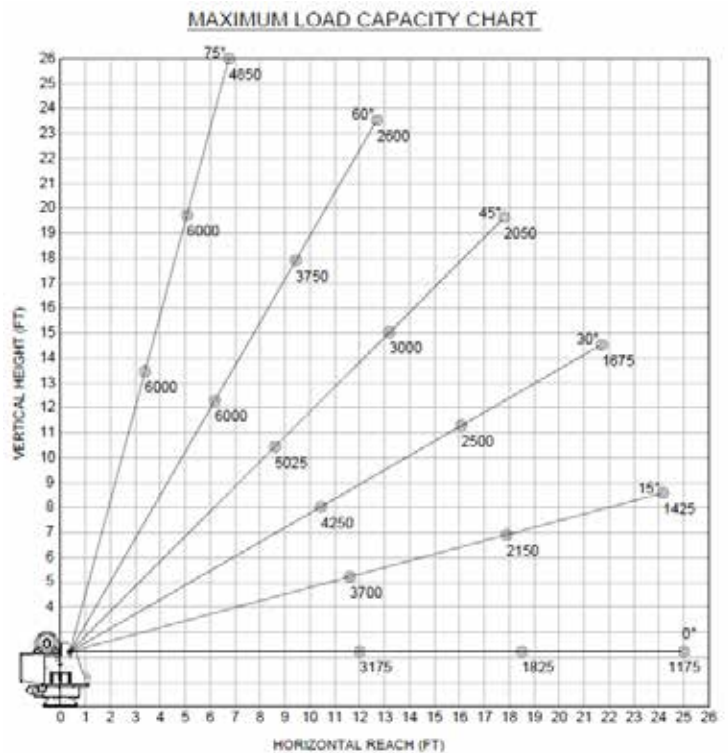
## SETTING THE STANDARD FOR HYDRAULIC CRANES

The Venturo HT40KX sets the standard for hydraulic, proportional control service cranes. This crane features a 40,000 ft-lb crane rating with a maximum capacity of 6,000 lbs at 6 ft. This crane has become a standard service application in the propane and construction industry. The HT40KX with a 25' boom length is available in standard proportional control.

## SPECIFICATIONS

<b>Lifting Capacities:</b>	6,000 lbs
<b>Crane Rating:</b>	40,000 ft-lbs
<b>Mounting Space:</b>	16" x 16"
<b>Stowed Height:</b>	36-7/8"
<b>Rope Diameter:</b>	3/8" @ 100'
<b>Line pull speed:</b>	60 ft/min @ 12 GPM (Single) 30 ft/min @ 12 GPM (Double)
<b>Max. Single-line:</b>	3,000 lbs
<b>Max. Double-line:</b>	6,000 lbs
<b>Rotation:</b>	400°
<b>Power Supply:</b>	PTO & Pump Required
<b>Requirements:</b>	12 gpm @ 3,000 psi
<b>Hydraulic Req:</b>	25 gal. reservoir
<b>Boom Elevation:</b>	-8° to +75°
<b>Controls:</b>	Full-Hydraulic Proportional
<b>Boom Extension 1:</b>	12' - 18' - 25' Full Hydraulic
<b>Minimum Vehicle Class:</b>	Class 4 (14,500 lbs GVWR)

## MAXIMUM LOAD CAPACITY CHART



## OPTIONS & ACCESSORIES

### Mounting Pedestals/Boom Rests

36" pedestals for platform bodies and adjustable 18" - 26" boom rests for utility bodies.

### Outrigger Packages

HT40KX requires rear outrigger packages that include either Manual or Hydraulic.

### Wireless Remote

Wireless FM remote control with onboard diagnostic system and receiver.

### Pumps

Optional pumps for proportional control.



**Venco Venturo Industries LLC**  
 12110 Best Place | Cincinnati, Ohio 45241  
 800-226-2238 | 513-772-8448 Local  
[info@venturo.com](mailto:info@venturo.com) | [www.venturo.com](http://www.venturo.com)

NOTE: All Venturo service cranes meet ANSI B30.5 and OSHA 1910.180 specifications. Specifications subject to change without notice. Copyright © 2019 Venco Venturo Industries LLC. All Rights Reserved.