

ELECTRIC - HYDRAULIC CRANES

3516E (ET12KX-16)



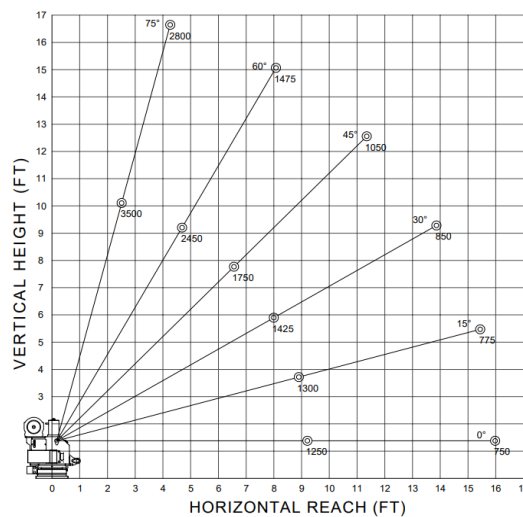
SPECIFICATIONS

Lifting Capacities:	3,500 lbs
Crane Rating:	12,000 ft-lbs
Mounting Space:	14" x 14"
Stowed Height:	26-3/4"
Rope Diameter:	1/4" @ 65'
Line Pull Speed	17 ft/min (Single-line) 10 ft/min (Double-line)
Max. Single-line:	1,750 lbs
Max. Double-line:	3,500 lbs
Rotation:	360° Continuous
Power Supply Requirements:	Power Supply: Electric 12V DC Requirements: #2 x 25 FT Battery Cables
Hydraulic Req:	Self-Contained w/ Power Unit
Boom Elevation:	-5° to +75°
Controls:	12V DC Non-Proportional
Boom Extension:	Hydraulic: 9' - 16'
Weight:	700lbs
Minimum Vehicle Class:	Class 2 (8,800 lbs GVWR)
Optional:	- Corded - Corded & Wireless

The 3516E service crane features proportional controls, single-stage, full-hydraulic boom extension, lighter weight and easy access housing. The controls provide consistent and uninterrupted positive and ground paths with unlimited continuous rotation. The electrical components are designed for long-lasting performance, and the crane itself is the right size for the majority of lifting jobs, making it ideal for the municipal/public works sector.

FEATURES

- **INDUSTRY LEADING IN ELECTRIC-HYDRAULIC CRANES**
- **POWERFUL DC ELECTRIC WINCH**
The ET series winches combine a powerful permanent magnet DC motor with robust sealing with proven 3-stage, all-metal gear train. Permanent grease lubrication means years of trouble-free service.
- **MANUAL CRANE OVERRIDE**
Each ET series crane gives the user the ability to operate and stow the crane if there is power loss through the remote
- **POWERFUL HYDRAULIC SLEW DRIVE**
Driven from high quality durable electric motor
- **COUNTER-BALANCE VALVE**
Counterbalance valving in all cylinders for increase safety and protection during operation



*Venturo Body: VP16 Crane Service Body