



ELECTRIC LIGHT-DUTY CRANES CT310KX



MAX. CAPACITY
1,900 LBS

CRANE RATING
6,650 FT-LBS

MAX. REACH
9 FT 3 IN

MIN. GVWR
NO MIN.

CONTROLS
ELECTRIC-
HYDRAULIC

FEATURES

■ MANUAL EXTENSION

The standard boom length for the CT310KX is 9'3"

■ POWERFUL DC ELECTRIC WINCH

The ET series winches combine a powerful permanent magnet DC motor with robust sealing with proven 3-stage, all metal geartrain. Permanent grease lubrication means years of trouble-free service.

■ FOUR-FUNCTION, FULL-POWER

The CT310KX includes power elevation, rotation, extension and winch.

SIZE OF A MAST CRANE, FUNCTIONS OF AN ELECTRIC/HYDRAULIC CRANE.

The Venturo CT310KX electric light-duty crane is a four-function crane which features a heavy-duty planetary winch and a small storage footprint. The crane features a folding-boom and a small mounting base utilizing very little space to allow for a larger work area. This crane is unique in the fact that it offers electric/hydraulic power to the winch, rotation, boom elevation and extension with a small manual pullout. Proportional controls are offered as an option for variable speed load control.

SPECIFICATIONS

Lifting Capacities:	1,900 lbs
Crane Rating:	6,650 ft-lbs
Mounting Space:	10-1/2" x 10-1/2"
Stowed Height:	67"
Rope Diameter:	3/16" @ 50'
Line pull speed:	30 ft/min (Single-line) 18 ft/min (Double-line)
Max. Single-line:	950 lbs
Max. Double-line:	1,900 lbs
Rotation:	360° Continuous
Power Supply:	Electric 12V DC
Requirements:	12v DC Battery
Hydraulic Req:	No Hydraulics
Boom Elevation:	-50° to +60°
Controls:	12V DC On/Off Winch
Controls: (Option)	12V DC Proportional Hyd.
Boom Extension 1:	Hydraulic 4'5" - 6'5"
Boom Extension 2:	Manual: 6'5" - 9'3"
Minimum Vehicle Class:	No Minimum

OPTIONS & ACCESSORIES

Outrigger Packages

CT310KX requires rear outrigger packages that include either Manual-Out/Manual-Down for smaller vehicle applications under 8,000 lbs GVWR.

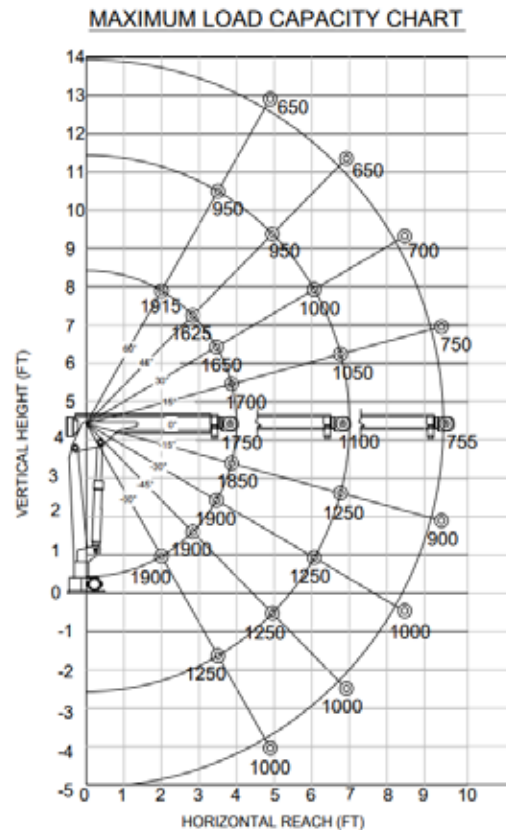
Proportional Control

Allows the crane operator to control the speed of the hydraulic functions of the crane. Speed up or slow down for total load control.

Circuit Breaker Kit

A recommended 250 AMP Circuit Breaker Kit should be used for the DT7K.

MAXIMUM LOAD CAPACITY CHART



NOTE: All Venturo service cranes meet ANSI B30.5 and OSHA 1910.180 specifications. Specifications subject to change without notice. Copyright © 2019 Venco Venturo Industries LLC. All Rights Reserved.