



# ELECTRIC CRANES ET12KX-15



MAX. CAPACITY  
3,500 LBS

CRANE RATING  
12,000 FT-LBS

MAX. REACH  
15 FT

MIN. GVWR  
8,800 LBS

CONTROLS  
ELECTRIC -  
HYDRAULIC

## FEATURES

### ■ HYDRAULIC/MANUAL EXTENSION

The standard boom length for the ET12KX is 15'.

### ■ POWERFUL DC ELECTRIC WINCH

The ET series winches combine a powerful permanent magnet DC motor with robust sealing with proven 3-stage, all metal geartrain. Permanent grease lubrication means years of trouble-free service.

### ■ MANUAL CRANE OVERRIDE

Each ET series crane gives the user the ability to operate and stow the crane if there is power loss through the remote.

## SETTING THE STANDARD FOR ELECTRIC SERVICE CRANES.

The Venturo ET12KX-15 service crane is a versatile application that is neither too large or small for a majority of lifting jobs. This crane has been utilized heavily in municipal/public works lifting anything from service equipment to fire hydrants throughout the United States. With a 12,000 ft-lb crane rating and a 3,500 lb maximum capacity, the ET12KX-15 can be installed on trucks with a minimum 8,800 lbs GVWR.

## SPECIFICATIONS

<b>Lifting Capacities:</b>	3,500 lbs
<b>Crane Rating:</b>	12,000 ft-lbs
<b>Mounting Space:</b>	14" x 14"
<b>Stowed Height:</b>	26-5/8"
<b>Rope Diameter:</b>	1/4" @ 65'
<b>Line pull speed:</b>	25 ft/min (Single-line) 4 ft/min (Double-line)
<b>Max. Single-line:</b>	1,750 lbs
<b>Max. Double-line:</b>	3,500 lbs
<b>Rotation:</b>	360° Continuous
<b>Power Supply:</b>	Electric 12V DC
<b>Requirements:</b>	12v DC Battery
<b>Hydraulic Req:</b>	Self-Contained w/ Power Unit
<b>Boom Elevation:</b>	-8° to +75°
<b>Controls:</b>	12V DC Non-Proportional
<b>Venturo Body</b>	HT25 Crane Service Body
<b>ET12KX Extension:</b>	Power: 7' - 11' Manual: 11' - 15'
<b>Minimum Vehicle Class:</b>	Class 2 (8,800 lbs GVWR)

## OPTIONS & ACCESSORIES

### Mounting Pedestals/Boom Rests

21" and 36" pedestals for platform bodies and adjustable 13" - 19" boom rests for utility bodies.

### Outrigger Packages

ET12KX requires rear outrigger packages that include either Manual-Out/Manual-Down.

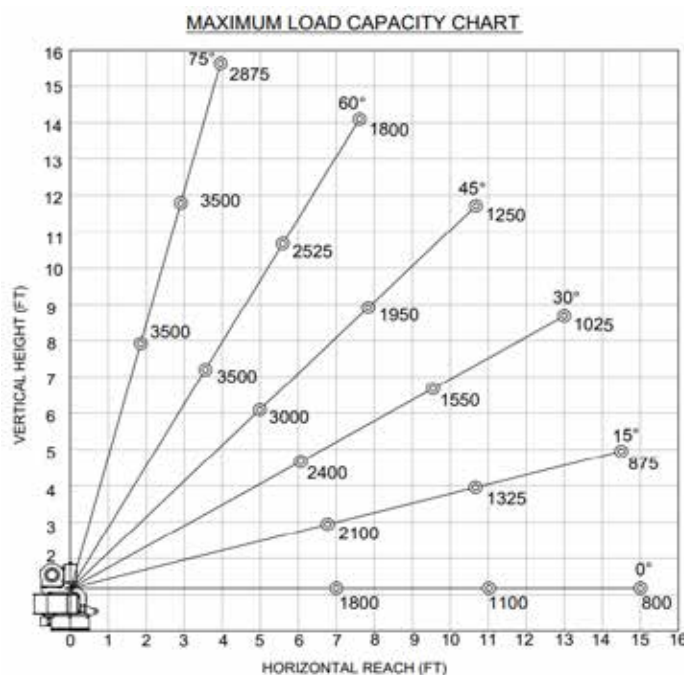
### Wireless Remote

Wireless FM remote control with onboard diagnostic system and receiver.

### Proportional Controls

Speed up and slow down the hydraulic functions of the ET12KX with variable speed controls.

## MAXIMUM LOAD CAPACITY CHART



NOTE: All Venturo service cranes meet ANSI B30.5 and OSHA 1910.180 specifications. Specifications subject to change without notice. Copyright © 2019 Venco Venturo Industries LLC. All Rights Reserved.



**Venco Venturo Industries LLC**  
 12110 Best Place | Cincinnati, Ohio 45241  
 800-226-2238 | 513-772-8448 Local  
[info@venturo.com](mailto:info@venturo.com) | [www.venturo.com](http://www.venturo.com)