



ELECTRIC CRANES

ET16KXX-20



MAX. CAPACITY
4,000 LBS

CRANE RATING
16,000 FT-LBS

MAX. REACH
20 FT

MIN. GVWR
10,500 LBS

CONTROLS
ELECTRIC

FEATURES

- **FULLY-POWERED BOOM EXTENSION**
The ET16KXX-20 comes with a fully-powered 20 FT boom extension.
- **POWERFUL DC ELECTRIC WINCH**
The ET series winches combine a powerful permanent magnet DC motor with robust sealing with proven 3-stage, all metal geartrain. Permanent grease lubrication means years of trouble-free service.
- **MANUAL CRANE OVERRIDE**
Each ET series crane gives the user the ability to operate and stow the crane if there is power loss through the remote.

THE BEST CRANE FOR A REINFORCED SERVICE BODY.

The Venturo ET16KXX-20 is a 16,000 ft-lb electric-hydraulic service crane with a 4,000 lb maximum capacity. This crane allows operators a crane application without the need for a heavy crane service body. A reinforced crane compartment on a standard utility body provides operators the strength they need on a standard service truck. The ET16KXX-20 also features optional proportional control for variable-speed loads.

SPECIFICATIONS

Lifting Capacities:	4,000 lbs (800 lbs @ 20 FT)
Crane Rating:	16,000 ft-lbs
Mounting Space:	14" x 14"
Stowed Height:	26-5/8"
Rope Diameter:	5/16" @ 80'
Line pull speed:	25 ft/min (Single-line) 4 ft/min (Double-line)
Max. Single-line:	2,000 lbs
Max. Double-line:	4,000 lbs
Rotation:	360° Continuous
Power Supply:	Electric 12V DC
Requirements:	12v DC Battery
Hydraulic Req:	Self-Contained w/ Power Unit
Boom Elevation:	-8° to +75°
Controls:	12V Electric
Controls: (Option)	Proportional Control
Hydraulic Power:	Elevation/Rotation/Extension
Boom Extension:	Power: 10' - 16' - 20'
Minimum Vehicle Class:	Class 3 (10,500 lbs GVWR)

OPTIONS & ACCESSORIES

Mounting Pedestals/Boom Rests

36" pedestals for platform bodies and adjustable 18" - 26" boom rests for utility bodies.

Outrigger Packages

ET16KXX-20 requires rear outrigger packages that include either Manual or Hydraulic.

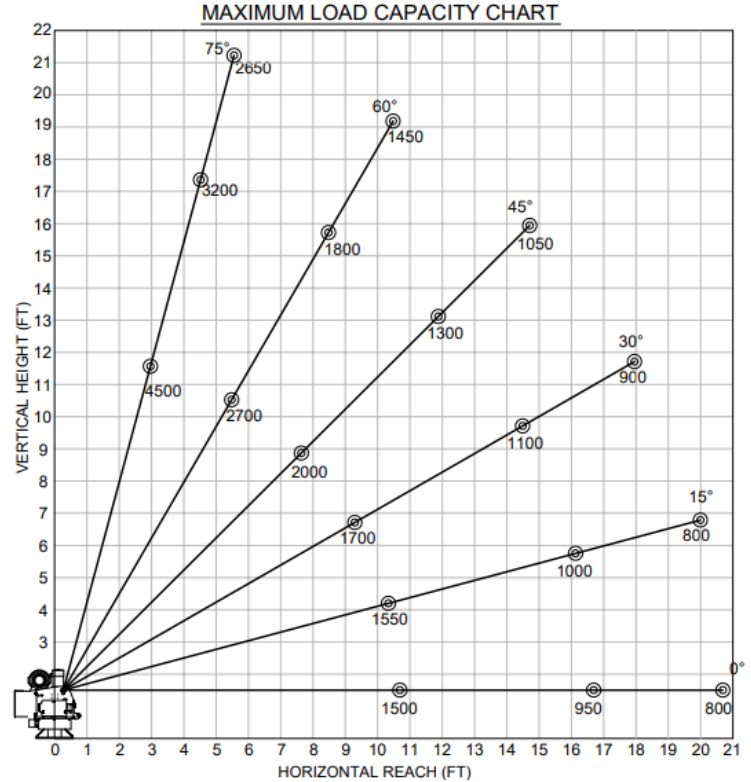
Proportional Control

The ET16KX has the capability for proportional control so operators will have full control of loads.

Circuit Breaker Kit

A recommended 250 AMP Circuit Breaker Kit should be used for the ET16KXX-20.

MAXIMUM LOAD CAPACITY CHART



Venco Venturo Industries LLC
 12110 Best Place | Cincinnati, Ohio 45241
 800-226-2238 | 513-772-8448 Local
info@venturo.com | www.venturo.com

NOTE: All Venturo service cranes meet ANSI B30.5 and OSHA 1910.180 specifications. Specifications subject to change without notice. Copyright © 2019 Venco Venturo Industries LLC. All Rights Reserved.