



ELECTRIC CRANES

ET18KXX-20



MAX. CAPACITY
4,500 LBS

CRANE RATING
18,000 FT-LBS

MAX. REACH
20 FT

MIN. GVWR
10,500 LBS

CONTROLS
ELECTRIC

FEATURES

- **FULL-POWERED BOOM EXTENSION**
The standard boom length for the ET18KXX-20 is 20'.
- **POWERFUL DC ELECTRIC WINCH**
The ET series winches combine a powerful permanent magnet DC motor with robust sealing with proven 3-stage, all metal geartrain. Permanent grease lubrication means years of trouble-free service.
- **MANUAL CRANE OVERRIDE**
Each ET series crane gives the user the ability to operate and stow the crane if there is power loss through the remote.

TRIED AND TRUE.

The Venturo ET18KXX-20 is an 18,000 ft-lb electric-hydraulic service crane with a 4,500 lb maximum capacity. This crane gives operators the distance and strength they need for lighter crane service bodies. Large enough to pull heavy equipment, docks or any other loads at a shorter distance with a large capacity, the crane is also small enough for a mid-size GVWR truck. The ET18KXX-20 also features optional proportional controls for operators to manage the speed of the hydraulic functions of the crane.

SPECIFICATIONS

Lifting Capacities:	4,500 lbs
Crane Rating:	18,000 ft-lbs
Mounting Space:	14" x 14"
Stowed Height:	26-5/8"
Rope Diameter:	5/16" @ 80'
Line pull speed:	25 ft/min (Single-line) 4 ft/min (Double-line)
Max. Single-line:	2,250 lbs
Max. Double-line:	4,500 lbs
Rotation:	360° Continuous
Power Supply:	Electric 12V DC
Requirements:	12v DC Battery
Hydraulic Req:	Self-Contained w/ Power Unit
Boom Elevation:	-8° to +75°
Controls:	12V DC Electric-Hydraulic
Controls: (Option)	Proportional Controls
Hydraulic Power:	Elevation/Rotation/Extension
Boom Extension:	Power: 10' - 16' - 20'
Minimum Vehicle Class:	Class 3 (10,500 lbs GVWR)

OPTIONS & ACCESSORIES

Mounting Pedestals/Boom Rests

36" pedestals for platform bodies and adjustable 18" - 26" boom rests for utility bodies.

Outrigger Packages

ET18KXX-20 requires rear outrigger packages that include either Manual or Hydraulic.

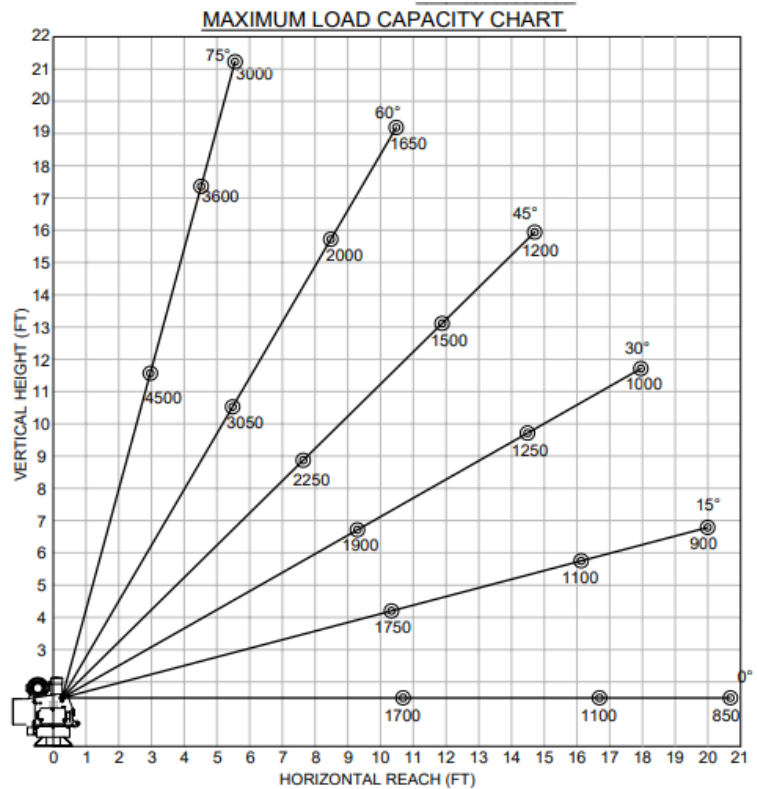
Proportional Controls

The ET18KXX-20 features optional proportional controls to allow the operator to manage loads.

Circuit Breaker Kit

A recommended 250 AMP Circuit Breaker Kit should be used for the ET18KXX-20.

MAXIMUM LOAD CAPACITY CHART



Venco Venturo Industries LLC
 12110 Best Place | Cincinnati, Ohio 45241
 800-226-2238 | 513-772-8448 Local
 info@venturo.com | www.venturo.com

NOTE: All Venturo service cranes meet ANSI B30.5 and OSHA 1910.180 specifications. Specifications subject to change without notice. Copyright © 2019 Venco Venturo Industries LLC. All Rights Reserved.