



ELECTRIC CRANES ET25KXX



MAX. CAPACITY
5,000 LBS

CRANE RATING
25,000 FT-LBS

MAX. REACH
20 FT

MIN. GVWR
10,500 LBS

CONTROLS
ELECTRIC

FEATURES

■ FULL-HYDRAULIC EXTENSION

The standard boom length for the ET25KXX is 20'.

■ POWERFUL DC ELECTRIC WINCH

The ET series winches combine a powerful permanent magnet DC motor with robust sealing with proven 3-stage, all metal geartrain. Permanent grease lubrication means years of trouble-free service.

■ MANUAL CRANE OVERRIDE

Each ET series crane gives the user the ability to operate and stow the crane if there is power loss through the remote.

5,000 LB CAPACITY AT 6 FT

The Venturo ET25KXX is a 25,000 ft-lb electric-hydraulic service crane with a 5,000 lb maximum capacity at 5 ft. This larger crane gives operators the distance and strength they need for heavier loads at a short distance. The ET25KXX includes powered, full-hydraulic extension out to 20 ft.

SPECIFICATIONS

Lifting Capacities:	5,000 lbs
Crane Rating:	25,000 ft-lbs
Mounting Space:	16" x 16"
Stowed Height:	28-7/8"
Rope Diameter:	5/16" @ 80'
Line pull speed:	28 ft/min (Single-line) 11 ft/min (Double-line)
Max. Single-line:	2,500 lbs
Max. Double-line:	5,000 lbs
Rotation:	360° Continuous
Power Supply:	Electric 12V DC
Requirements:	12v DC Battery
Hydraulic Req:	Self-Contained w/ Power Unit
Boom Elevation:	-8° to +75°
Controls:	Electric On/Off Functions
Hydraulic Power:	Elevation/Rotation/Extension
Boom Extension:	10' - 16' - 20' Full Hydraulic
Minimum Vehicle Class:	Class 3 (10,500 lbs GVWR)

OPTIONS & ACCESSORIES

Mounting Pedestals/Boom Rests

36" pedestals for platform bodies and adjustable 18" - 26" boom rests for utility bodies.

Outrigger Packages

ET25KX requires rear outrigger packages that include either Manual or Hydraulic.

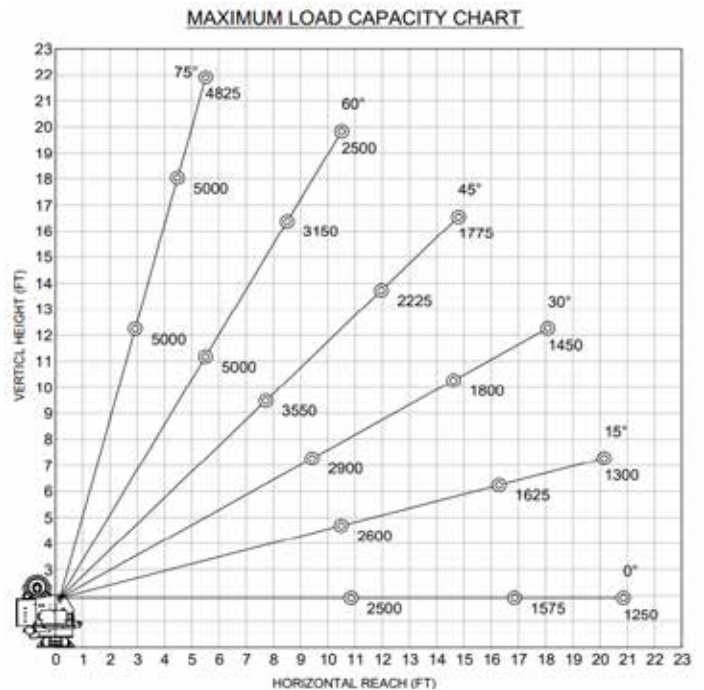
Wireless Remote

Wireless FM remote control with onboard diagnostic system and receiver.

Circuit Breaker Kit

A recommended 300 AMP Circuit Breaker Kit should be used for the ET25KX.

MAXIMUM LOAD CAPACITY CHART



Venco Venturo Industries LLC
 12110 Best Place | Cincinnati, Ohio 45241
 800-226-2238 | 513-772-8448 Local
 info@venturo.com | www.venturo.com

NOTE: All Venturo service cranes meet ANSI B30.5 and OSHA 1910.180 specifications. Specifications subject to change without notice. Copyright © 2019 Venco Venturo Industries LLC. All Rights Reserved.