



ELECTRIC CRANES ET36KX



MAX. CAPACITY
6,000 LBS

CRANE RATING
36,000 FT-LBS

MAX. REACH
20 FT

MIN. GVWR
14,500 LBS

CONTROLS
ELECTRIC

FEATURES

- **FULL-HYDRAULIC EXTENSION**
The standard boom length for the ET36KX is 20'.
- **POWERFUL DC ELECTRIC WINCH**
The ET series winches combine a powerful permanent magnet DC motor with robust sealing with proven 3-stage, all metal geartrain. Permanent grease lubrication means years of trouble-free service.
- **MANUAL CRANE OVERRIDE**
Each ET series crane gives the user the ability to operate and stow the crane if there is power loss through the remote.

6,000 LB CAPACITY AT 6 FT

The Venturo ET36KX is a 36,000 ft-lb electric-hydraulic service crane with a 6,000 lb maximum capacity at 6 ft. This larger crane gives operators the distance and strength they need for heavier loads at a short distance. This electric crane features full-hydraulic boom extension out to 20 ft. The ET36KX also offers optional "proportional controls" which give operators variable speed hydraulic functions including rotation, elevation & boom extension.

SPECIFICATIONS

Lifting Capacities:	6,000 lbs
Crane Rating:	36,000 ft-lbs
Mounting Space:	16" x 16"
Stowed Height:	28-7/8"
Rope Diameter:	5/16" @ 80'
Line pull speed:	28 ft/min (Single-line) 14 ft/min (Double-line)
Max. Single-line:	3,000 lbs
Max. Double-line:	6,000 lbs
Rotation:	360° Continuous
Power Supply:	Electric 12V DC
Requirements:	12v DC Battery
Hydraulic Req:	Self-Contained w/ Power Unit
Boom Elevation:	-8° to +75°
Controls 1:	Electric On/Off Functions
Controls 2: (Option)	Proportional Control
Hydraulic Power:	Elevation/Rotation/Extension
Boom Extension:	10' - 16' - 20' Full Hydraulic
Minimum Vehicle Class:	Class 4 (14,500 lbs GVWR)

OPTIONS & ACCESSORIES

Mounting Pedestals/Boom Rests

36" pedestals for platform bodies and adjustable 18" - 26" boom rests for utility bodies.

Outrigger Packages

ET36KX requires rear outrigger packages that include either Manual or Hydraulic.

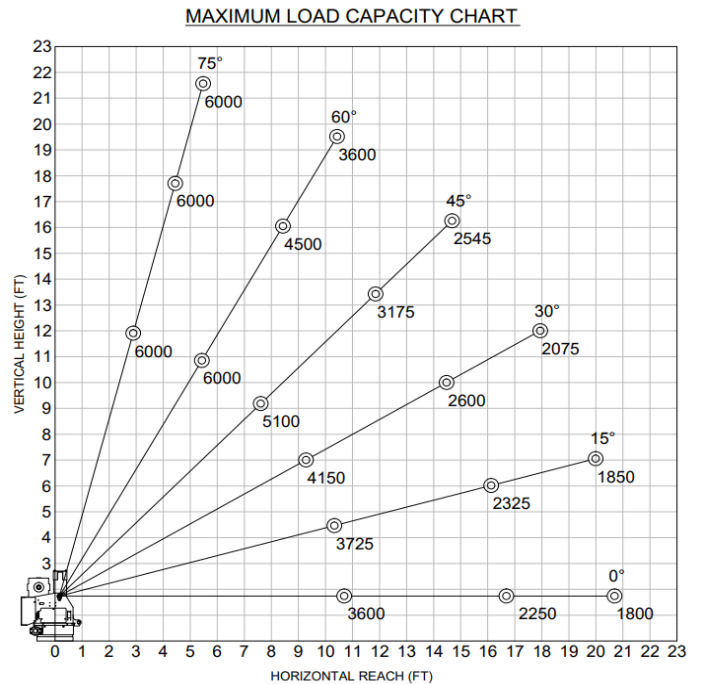
Proportional Control

Optional "Proportional Control" which gives the operator variable speed hydraulic functions of the crane which include rotation, elevation & extension.

Circuit Breaker Kit

A recommended 300 AMP Circuit Breaker Kit should be used for the ET36KX.

MAXIMUM LOAD CAPACITY CHART



Venco Venturo Industries LLC
 12110 Best Place | Cincinnati, Ohio 45241
 800-226-2238 | 513-772-8448 Local
 info@venturo.com | www.venturo.com

NOTE: All Venturo service cranes meet ANSI B30.5 and OSHA 1910.180 specifications. Specifications subject to change without notice. Copyright © 2019 Venco Venturo Industries LLC. All Rights Reserved.