



MAX. CAPACITY
3,200 LBS

CRANE RATING
8,000 FT-LBS

MAX. REACH
14 FT

MIN. GVWR
8,000 LBS

CONTROLS
ELECTRIC

FEATURES

- **HYDRAULIC/MANUAL EXTENSION**
The standard boom length for the ET8KX is 14'.
- **POWERFUL DC ELECTRIC WINCH**
The ET series winches combine a powerful permanent magnet DC motor with robust sealing with proven 3-stage, all metal geartrain. Permanent grease lubrication means years of trouble-free service.
- **MANUAL CRANE OVERRIDE**
Each ET series crane gives the user the ability to operate and stow the crane if there is power loss through the remote.

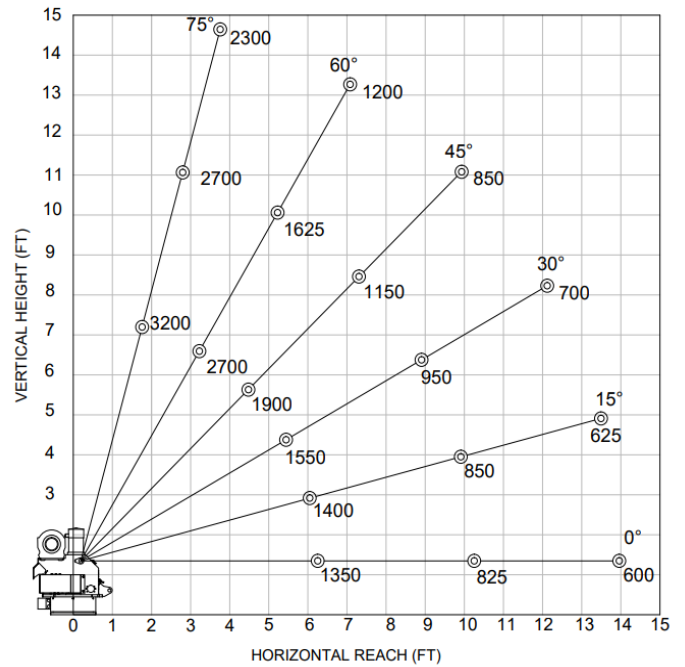
VARIATIONS WITH A 3,200 LB CAPACITY.

The Venturo ET8KX is an 8,000 ft-lb electric-hydraulic service crane with a 3,200 lb lifting capacity featuring a 12V DC electric winch, electric rotation, hydraulic boom elevation and extension. The ET8 comes in two variations; ET8K includes full manual boom extension and the ET8KX includes hydraulic/manual boom extension. The ET8KX also has optional Proportional Controls for variable speed hydraulic functions.

SPECIFICATIONS

Lifting Capacities:	3,200 lbs
Crane Rating:	8,000 ft-lbs
Mounting Space:	14" x 14"
Stowed Height:	26-5/8"
Rope Diameter:	1/4" @ 65'
Line pull speed:	17 ft/min (Single-line) 7 ft/min (Double-line)
Max. Single-line:	1,600 lbs
Max. Double-line:	3,200 lbs
Rotation:	360° Continuous
Power Supply:	Electric 12V DC
Requirements:	12v DC Battery
Hydraulic Req:	Self-Contained w/ Power Unit
Boom Elevation:	-8° to +75°
Controls 1:	Electric 12V DC On/Off Function
Controls 2:	Proportional Control (ET8KX)
ET8K Extension:	Manual: 6' - 10' Manual: 10' - 14'
ET8KX Extension:	Power: 6' - 10' Manual: 10' - 14'
Minimum Vehicle Class:	Class 2 (8,000 lbs GVWR)

MAXIMUM LOAD CAPACITY CHART



OPTIONS & ACCESSORIES

Mounting Pedestals/Boom Rests

21" and 36" pedestals for platform bodies and adjustable 13" - 19" boom rests for utility bodies.

Outrigger Packages

ET8KX requires rear outrigger packages that include either Manual-Out/Manual-Down.

Proportional Controls

Variable speeds of hydraulic functions for Rotation, Elevation & Extension on ET8KX.

Circuit Breaker Kit

A recommended 250 AMP Circuit Breaker Kit should be used for the ET8KX.



Venco Venturo Industries LLC
 12110 Best Place | Cincinnati, Ohio 45241
 800-226-2238 | 513-772-8448 Local
info@venturo.com | www.venturo.com

NOTE: All Venturo service cranes meet ANSI B30.5 and OSHA 1910.180 specifications. Specifications subject to change without notice. Copyright © 2019 Venco Venturo Industries LLC. All Rights Reserved.