

HYDRAULIC CRANES HT30KX

Max. Capacity	5,000 LBS
Crane Rating	30,000 FT-LBS
Max. Reach	25 FT
Min. GVWR	11,000 LBS
Controls	VLC™



VLC™ SYSTEM CONTROLS

Multiple Safety and Capacity Alerts

Green/Yellow/Red alert light located on the underside of the boom.

Overload/Stability Safety

The VLC system controls and prevents any type of overload on the crane and also provides stability and grade control.

Wireless Remote

The wireless remote, pistol-grip controller is a standard feature as part of the VLC™ system for ALL proportionally-controlled hydraulic Venturo service cranes.



The Venturo HT30KX with VLC™ controls features a maximum capacity of 5,000 lb. at 6 ft. Venturo's new Electronic Crane Control Management System provides added safety and benefits for crane operators. Benefits include a standard, wireless, pistol-grip controller, overload protection which controls and prevents any type of overload, LCD Display Screen alerts, transmitter handle vibrations, green/yellow/red alert lights under boom, and corresponding lights on the receiver. The LCD display shows percentage of load, boom angle in degrees and percentage of total capacity during crane operation. The VLC™ system also provides vehicle stability and grade control.

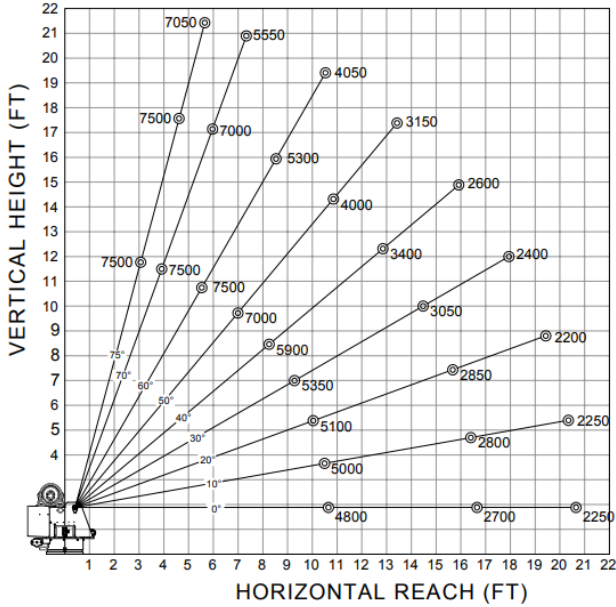
FEATURES

- **AUTO ADJUST ANTI-TWO BLOCK**
 Innovative, rugged and compact anti-two block design automatically adjusts to boom angle. This minimizes hook-to-boom tip height and is less prone to damage.
- **CUSTOM H-VALVING**
 Provides high hydraulic flow for safe crane function, minimizes quick, jerky functions
- **SLEW DRIVE**
 Extra gear that allows for smooth hydraulic rotation, eliminates jerky movements while under load
- **HEXAGONAL BOOM DESIGN**
 Greater strength and Increased Load Capacity
- **HIGH WIRE ROPE GAUGES**
 Increased Strength and durability during operations under load
- **COUNTER-BALANCE VALVES**
 All cylinders include load bearing counter-balance valves to prevent loads from dropping
- **REAR COVERS**
 Rear covers now have new knobs that simply twist on/off that allow easier rear cover removal, no tool needed

HYDRAULIC CRANES HT30KX

MAXIMUM LOAD CAPACITY

25 ft



SPECIFICATIONS - 25 FT

Lifting Capacities:	5,000 lbs
Crane Rating:	30,000 ft-lbs
Mounting Space:	16" x 16"
Stowed Height:	30-5/8"
Rope Diameter:	5/16" @ 80"
Line pull speed:	55 ft/min @ 5 GPM (Single) 27 ft/min @ 5 GPM (Double)
Max. Single-line:	2,500 lbs
Max. Double-line:	5,000 lbs
Rotation:	400°
Power Supply Requirements:	PTO & Pump Required 10-12 gpm @ 3,000 psi
Hydraulic Req:	10 gal. reservoir
Boom Elevation:	-8° to + 75°
Controls:	VLC™ (Venturo Logic Controls) Standard Wireless Remote
Boom Extension:	12' - 18' - 25' Full Hydraulic
Weight:	1575 lbs
Minimum Vehicle Class:	Class 3 (11,000 lbs GVWR)
Optional:	Engine Start/Stop & Throttle Controls

