



# HT60KX



<b>Capacity</b>	10000 lbs
<b>Crane Rating</b>	60000 ft.lbs.
<b>Boom Length(s)</b>	25 FT
	30 FT
<b>Min. GVWR</b>	Class 6 - 25999 lbs
<b>Controls</b>	Hydraulic/VLC

## Specifications

<b>Capacity</b>	10000 lbs.
<b>Crane Rating</b>	60000 ft.lbs.
<b>Boom Length(s)</b>	11'11" - 18'8" - 25'2" 13'6" - 21-9' - 29'10"
<b>Stowed Boom Length</b>	(25') 13'10" (30') 15'10"
<b>Dimensions</b>	35-3/16" H x 20-2/8" W
<b>Base Plate</b>	20-5/8" x 22"
<b>Bolt Holes</b>	19-1/4" x 15-1/8" ( 4x - Ø1-7/32")
<b>Swing Radius</b>	R22-1/4"
<b>Wire Rope</b>	100 ft. of 3/8" (25') 125 ft. of 3/8" (30')
<b>Crane Weight</b>	2190 lbs (25') 2280 lbs (30')

<b>Hydraulic Fluid</b>	Cold to Moderate	ISO Grade AW 46
	Warm to Hot	ISO Grade AW 68
<b>Hydraulic Hoses</b>	Pressure	5/8" min.
	Return	3/4" min.
	Suction	1-1/4" min.
<b>Requirements</b>	Hydraulic Reservoir	40-gallon
<b>PTO PUMP</b>		12 GPM @ 3000 psi
<b>Rotation</b>	Curbside CCW	20-degrees
	Curbside CW	380-degrees

## Standard Equipment

### VLC Crane Control System

- Wireless-Remote, Pistol-Grip Controller
- Overload Protection Alerts
- LCD Display Screen Text
- Green/Yellow/Red under-boom alert lights

### Counterbalance Valves

45 ft. CAN CORD for wireless remote

## Optional Equipment

### LED Boomtip Worklight

### EZ Stow Handle

### Custom Paint

### 40-gallon Hydraulic Reservoir

### 36" High Mounting Pedestal

### Adjustable 18" - 26" Boom Rest

### Front Manual Outriggers

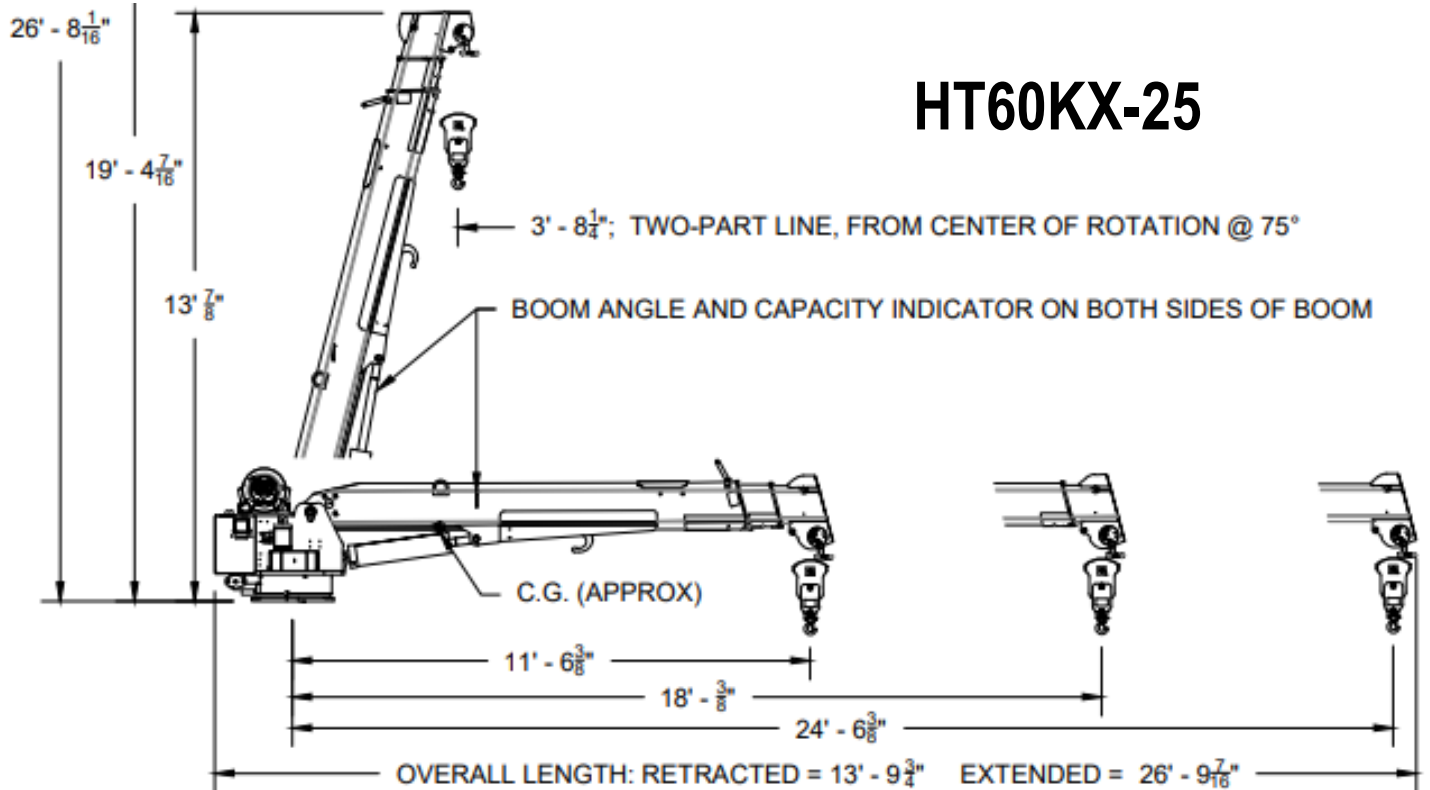
### Rear Manual or Hydraulic Outriggers



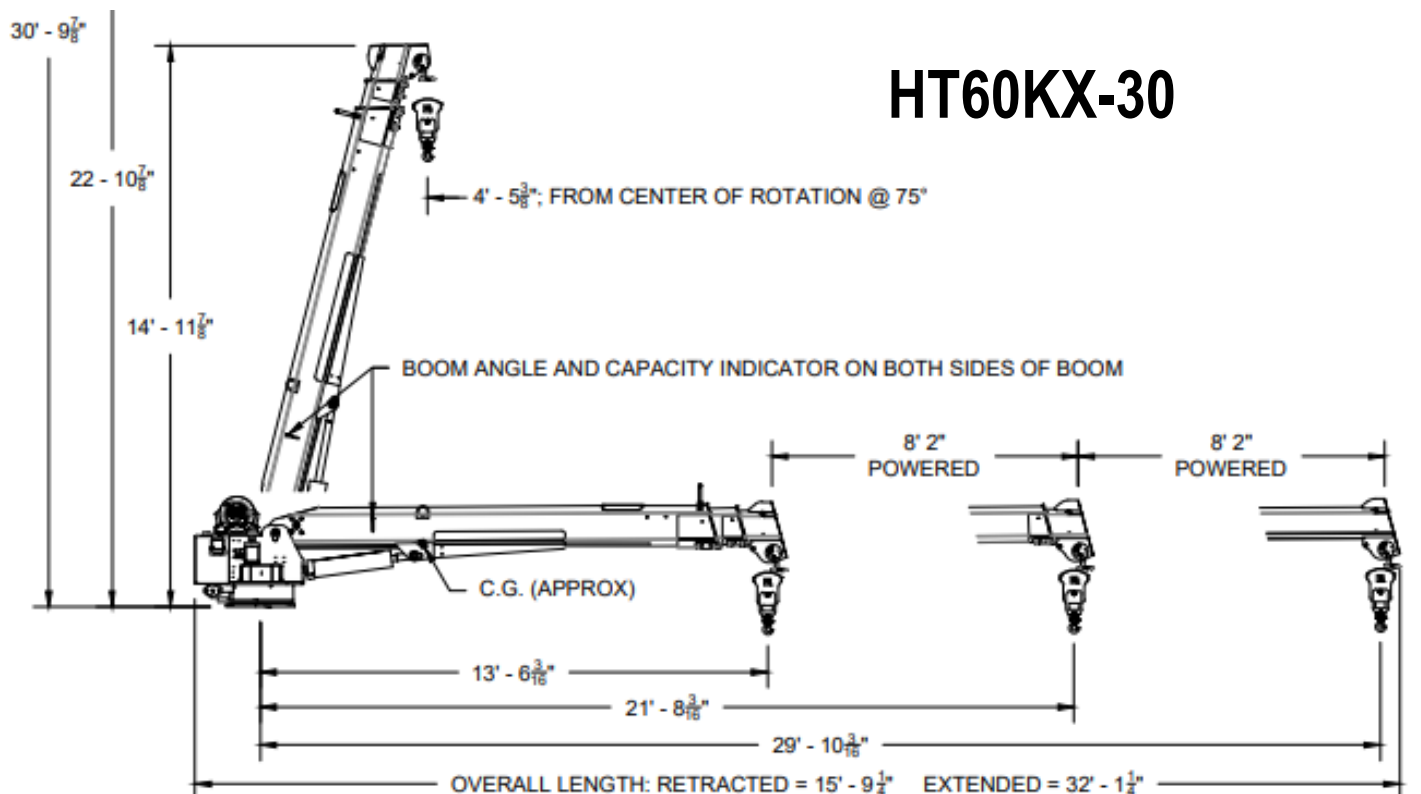
**Venco Venturo Industries LLC**  
 12110 Best Place | Cincinnati, Ohio 45241  
 800-226-2238 | 513-772-8448 Local  
 info@venturo.com | www.venturo.com

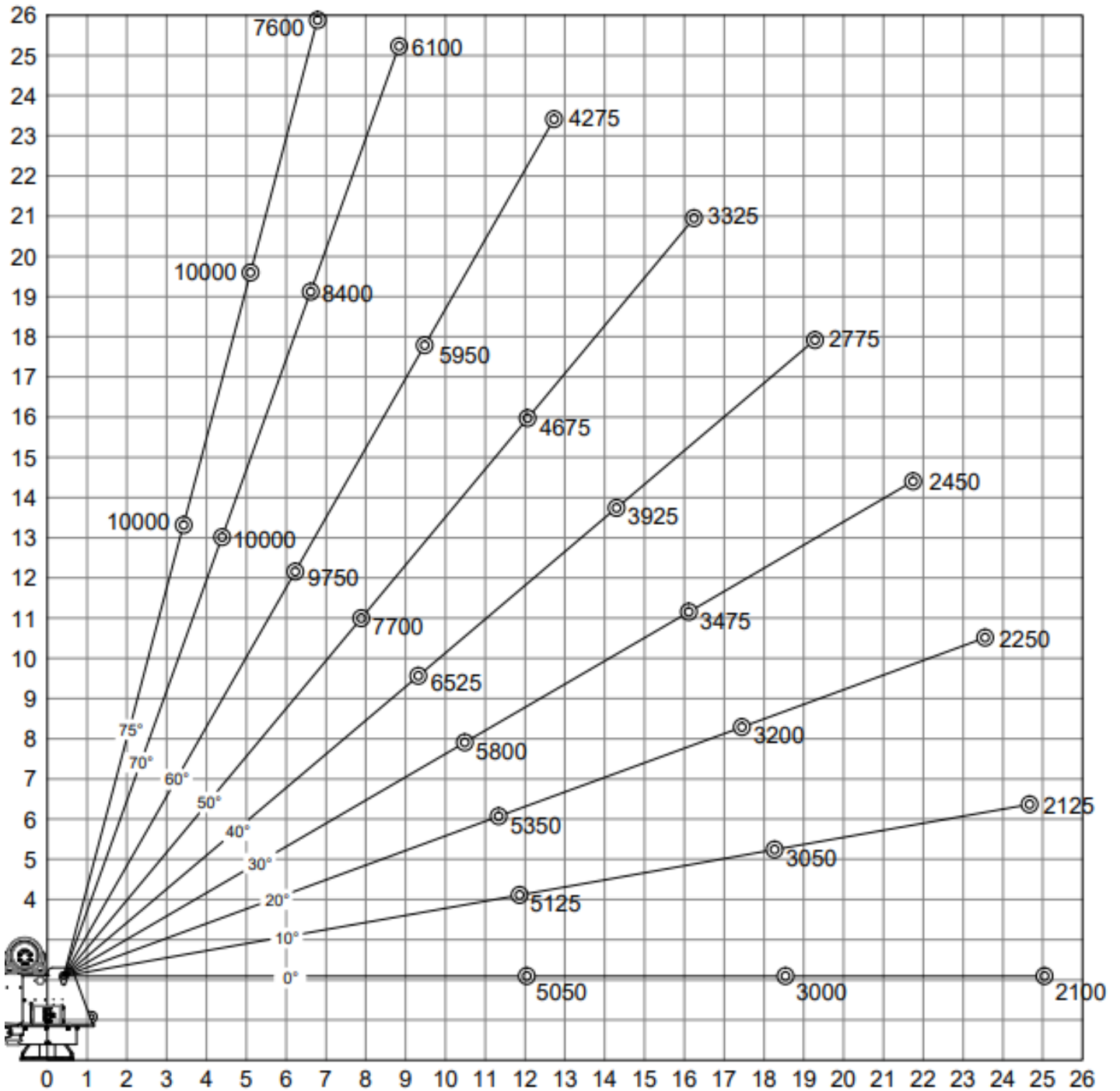
NOTE: All Venturo service cranes meet ANSI B30.5 and OSHA 1910.180 specifications. Specifications subject to change without notice. Copyright © 2022 Venco Venturo Industries LLC. All Rights Reserved.

## HT60KX-25



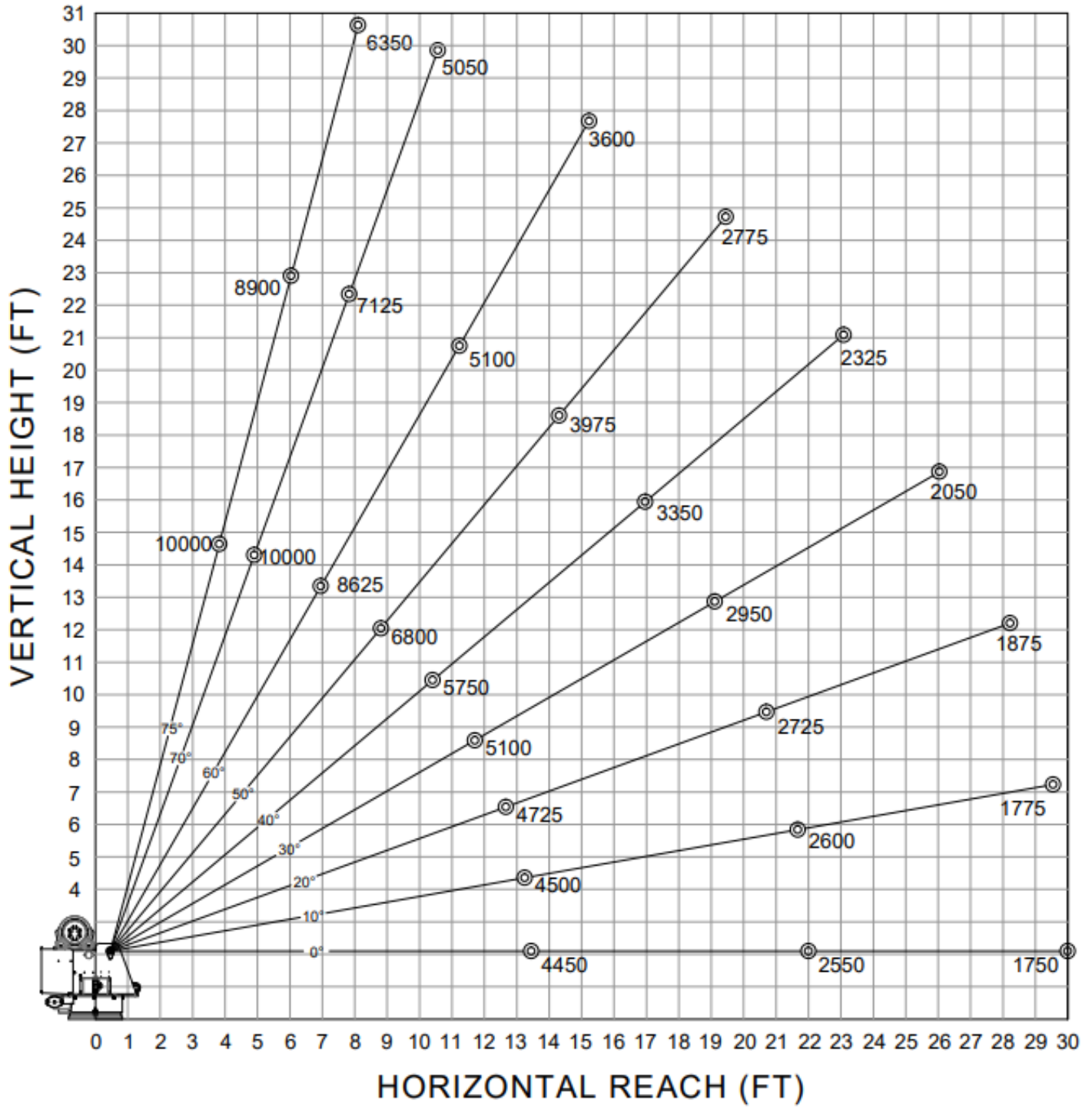
## HT60KX-30





**HT60KX-25**

## MAXIMUM LOAD CAPACITY CHART



**HT60KX-30**