

# TABLE OF CONTENTS

## CT/CTFB INSTRUCTION MANUAL

### **SECTION 100 DESCRIPTION & SPECIFICATIONS**

18580	INSTALLATION DIMENSIONS - CT2003FB
18581	INSTALLATION DIMENSIONS - CT2004FB
18584	INSTALLATION DIMENSIONS - CT2005
19481	INSTALLATION DIMENSIONS - CT2003/4/5FB-S - MAX CUTDOWN
18585	INSTALLATION DIMENSIONS - 13171 & 13172 SOCKETS

### **SECTION 150 SAFETY**

870701	SAFETY & HAZARDS - GENERAL
16176	DECAL PLACEMENT

### **SECTION 200 INSTALLATION**

870702	OPERATION & MAINTENANCE INSTRUCTIONS
711105	CABLE & BATTERY REQUIREMENTS - ET AND HT CRANES
15660	BATTERY CABLE INSTALLATION DRAWING
711006	WIRE ROPE SPECIFICATIONS

### **SECTION 400 REPLACEMENT PARTS**

19316	CT2003FB/CT2004FB/CT2005 REPLACEMENT PARTS DRAWING
19317	CT2003FB/CT2004FB/CT2005 REPLACEMENT PARTS LIST
15628	WINCH POWER UNIT WIRING DIAGRAM
▲ 20455	REPLACEMENT PARTS - 1 FUNCTION PENDANT CONTROL
12005-1	REPLACEMENT PARTS - A/C PENDANT CORD
116100	16100 SERIES POWER UNIT REPLACEMENT PARTS DRAWING
811016	16100 SERIES POWER UNIT REPLACEMENT PARTS LIST

**WARNING: THESE PRODUCTS ARE NOT PASSENGER LIFTS. THEY ARE NOT DESIGNED OR INTENDED TO BE USED TO LIFT, SUPPORT OR OTHERWISE TRANSPORT PERSONNEL.**

**SWIVEL SNATCH BLOCK REQUIRED FOR LOADS OVER 1200 LBS.**

**3/16" DIA WIRE ROPE  
35 FT**

**PLUG IN PENDANT CONTROL WITH 15 FT STRAIGHT CORD**

**SWIVEL LOCK  
360° ROTATION  
POSITIVE LOCK  
IN 8 POSITIONS**

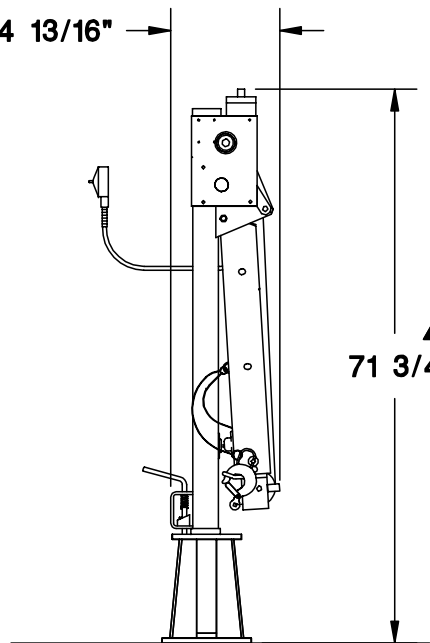
**'C' SOCKET**

**TRUCK BED**

**BOOM IN FOLDED POSITION  
( 'A' & 'C' SOCKETS )**

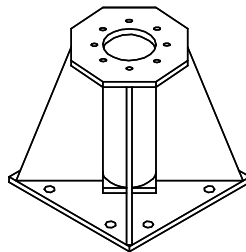
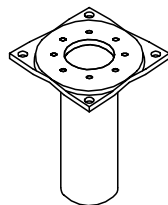
**14 13/16"**

**71 3/4"**

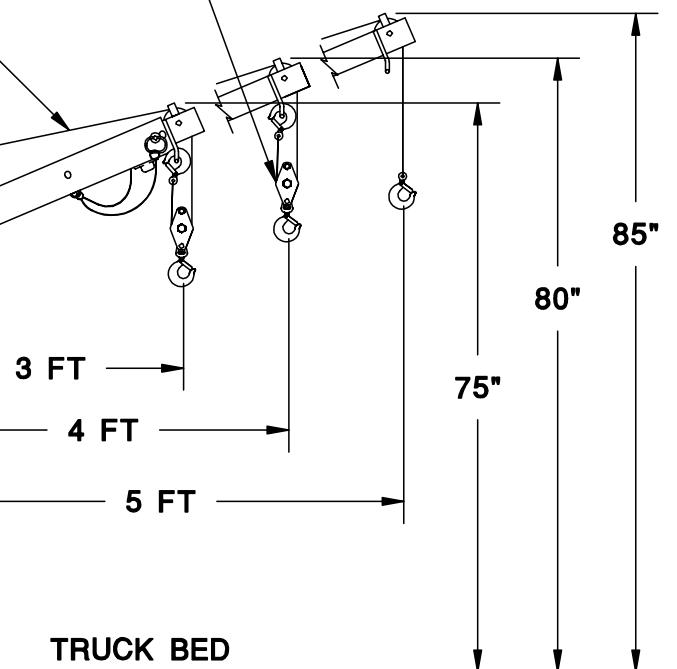


**'A' SOCKET**

**'C' SOCKET**



**BOOM WILL FOLD WITH BOTH 'A' & 'C' SOCKETS**



PERFORMANCE CHARACTERISTICS			
BOOM POSITION	LOAD CAPACITY	PART LINE	LIFTING SPEED AT CAPACITY LOAD
5 FT	1000 LBS	1	15 FT/MIN
4 FT	1500 LBS	2	9 FT/MIN
3 FT	2000 LBS	2	8 FT/MIN

**SNATCH BLOCK REQUIRED FOR LOADS OVER 1200 LBS.**

**NET WEIGHT WITHOUT SOCKET 195 LBS.**

**WARNING: THESE PRODUCTS ARE NOT PASSENGER LIFTS. THEY ARE NOT DESIGNED OR INTENDED TO BE USED TO LIFT, SUPPORT OR OTHERWISE TRANSPORT PERSONNEL.**

**SWIVEL SNATCH BLOCK REQUIRED FOR LOADS OVER 1200 LBS.**

**3/16" DIA WIRE ROPE  
35 FT**

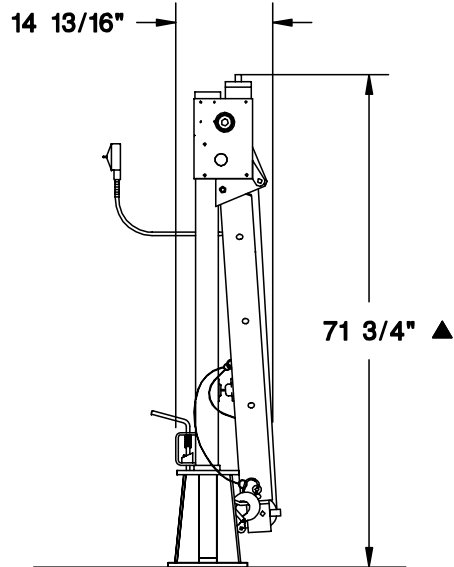
**PLUG IN  
PENDANT CONTROL  
WITH 15 FT  
STRAIGHT CORD**

**SWIVEL LOCK  
360° ROTATION  
POSITIVE LOCK  
IN 8 POSITIONS**

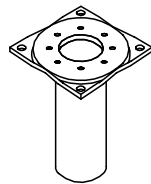
**'C' SOCKET**

**TRUCK BED**

**BOOM IN FOLDED  
POSITION  
( 'C' SOCKET ONLY )**

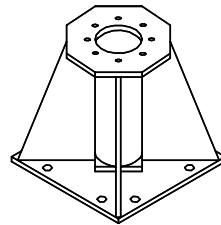


**'A' SOCKET**

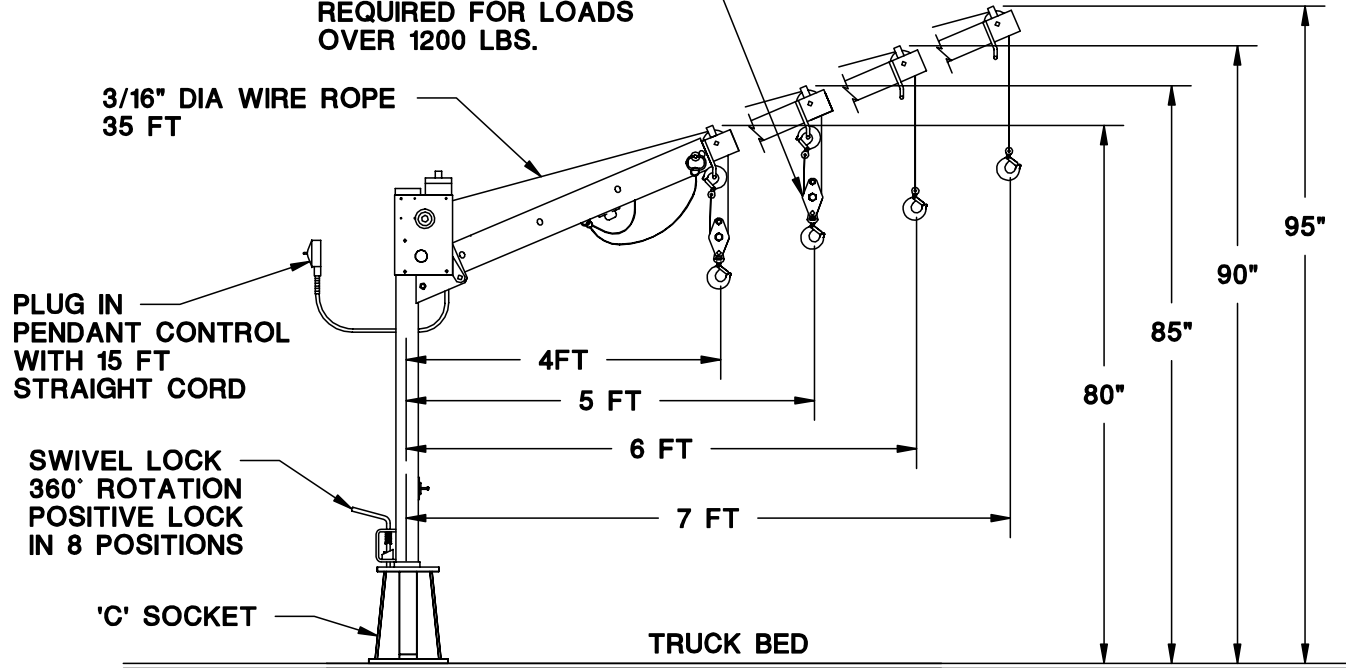


**BOOM WILL NOT FOLD  
WITH 'A' SOCKET**

**'C' SOCKET**



**BOOM WILL FOLD  
WITH 'C' SOCKET**



**PERFORMANCE CHARACTERISTICS**

BOOM POSITION	LOAD CAPACITY	PART LINE	LIFTING SPEED AT CAPACITY LOAD
7 FT	700 LBS	1	18 FT/MIN
6 FT	900 LBS	1	16 FT/MIN
5 FT	1200 LBS	1	13 FT/MIN
5 FT	1200 LBS	2	10 FT/MIN
4 FT	1500 LBS	2	9 FT/MIN

**SNATCH BLOCK REQUIRED FOR LOADS OVER 1200 LBS.**

**NET WEIGHT WITHOUT SOCKET 200 LBS.**



**TITLE  
INSTALLATION DRAWING**

**CT2004 FB CRANE**

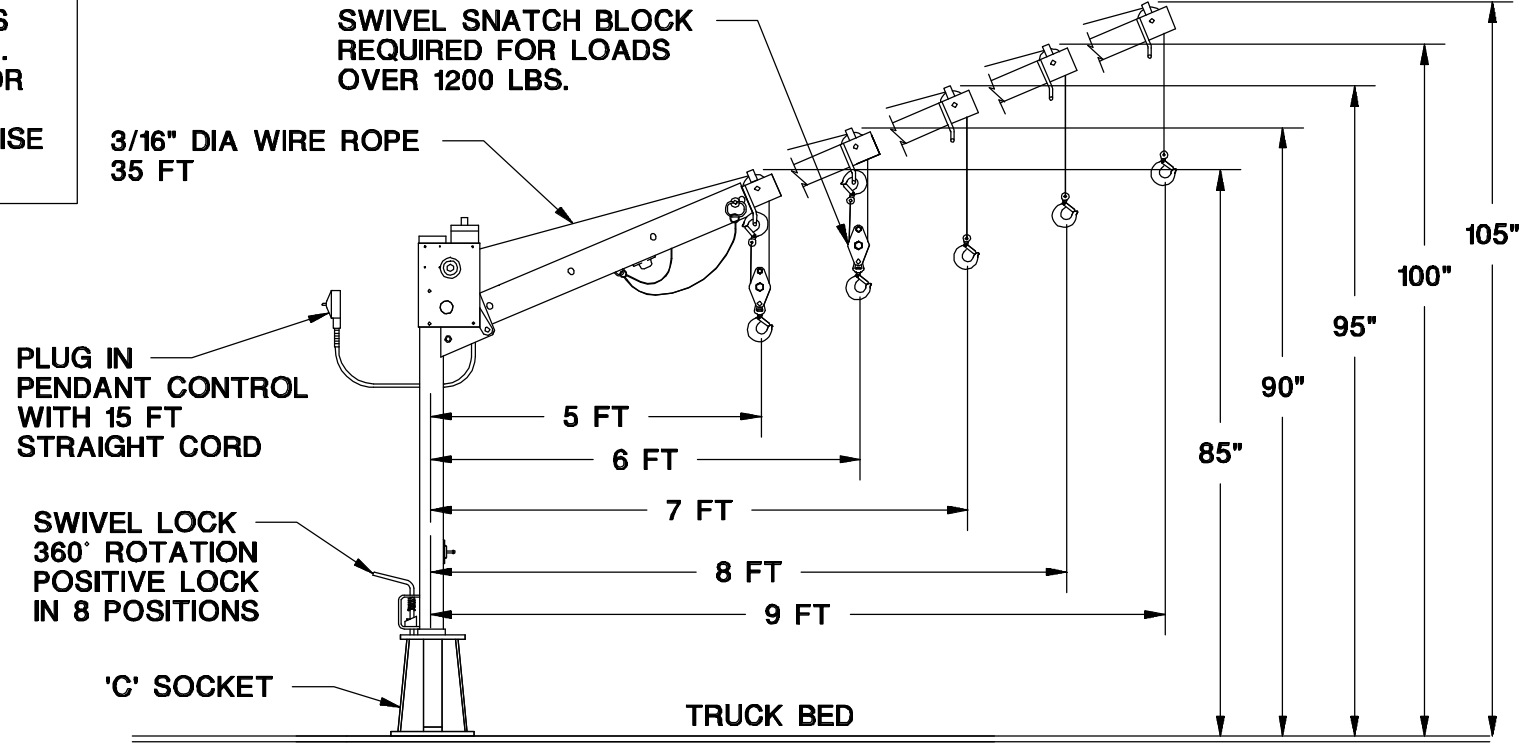
**DATE  
11-21-00A**

**SUPERSEDES  
12-12-97**

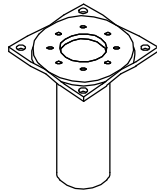
**SECTION  
C100**

**18581**

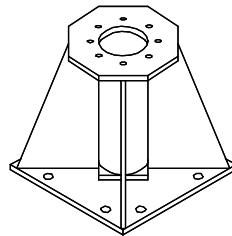
**WARNING: THESE PRODUCTS ARE NOT PASSENGER LIFTS. THEY ARE NOT DESIGNED OR INTENDED TO BE USED TO LIFT, SUPPORT OR OTHERWISE TRANSPORT PERSONNEL.**



**'A' SOCKET**



**'C' SOCKET**

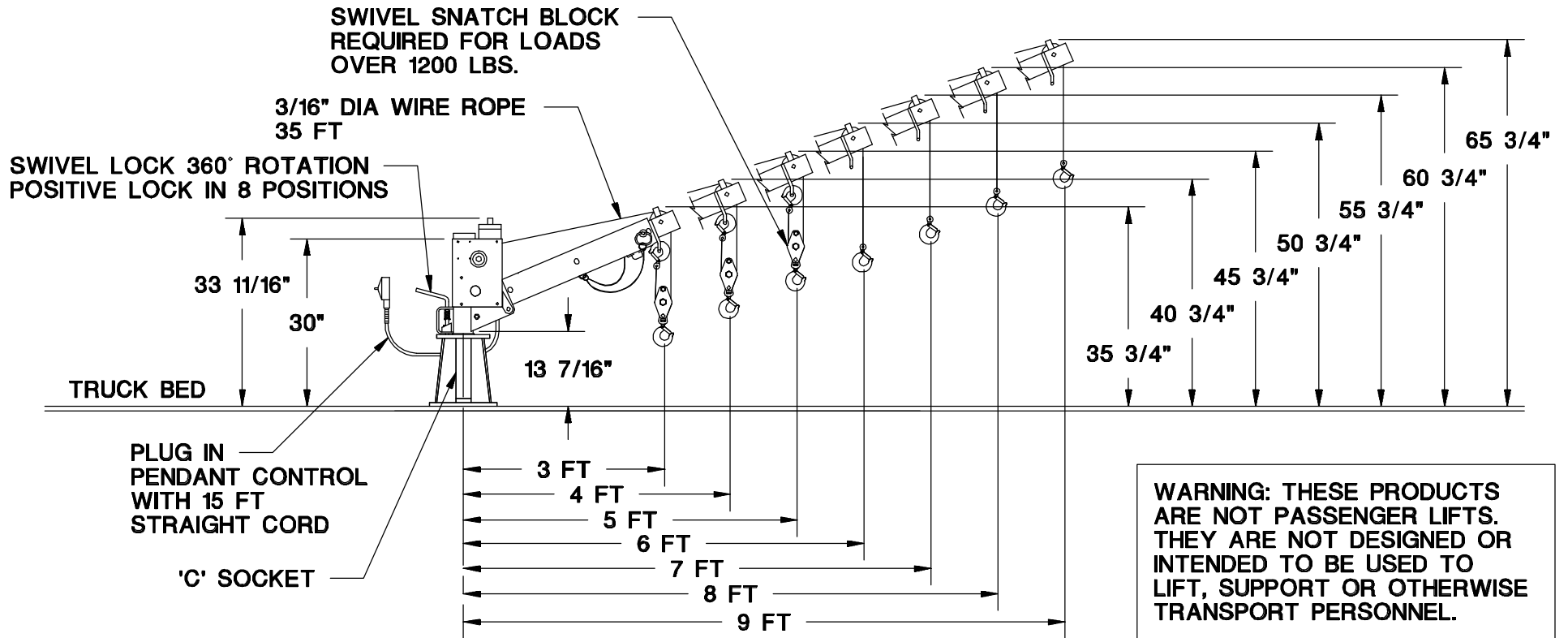


**BOOM WILL NOT FOLD WITH 'A' OR 'C' SOCKETS**

PERFORMANCE CHARACTERISTICS			
BOOM POSITION	LOAD CAPACITY	PART LINE	LIFTING SPEED AT CAPACITY LOAD
9 FT	500 LBS	1	20 FT/MIN
8 FT	600 LBS	1	19 FT/MIN
7 FT	700 LBS	1	18 FT/MIN
6 FT	900 LBS	1	16 FT/MIN
5 FT	1200 LBS	1	13 FT/MIN
5 FT	1200 LBS	2	10 FT/MIN

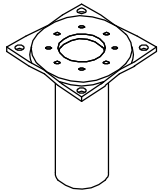
**SNATCH BLOCK REQUIRED FOR LOADS OVER 1200 LBS.**

**NET WEIGHT WITHOUT SOCKET 205 LBS.**

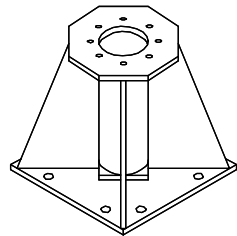


NET WEIGHT W/OUT SOCKET (MAX CUT-DOWN)	
CT2003	155 LBS
CT2004	160 LBS
CT2005	165 LBS

'A' SOCKET



'C' SOCKET



BOOM WILL NOT FOLD  
WITH 'A' OR 'C' SOCKETS

PERFORMANCE CHARACTERISTICS			
BOOM POSITION	LOAD CAPACITY	PART LINE	LIFTING SPEED AT CAPACITY LOAD
9 FT	500 LBS	1	20 FT/MIN
7 FT	700 LBS	1	18 FT/MIN
5 FT	1000 LBS	1	15 FT/MIN
5 FT	1200 LBS	2	10 FT/MIN
3 FT	2000 LBS	2	8 FT/MIN

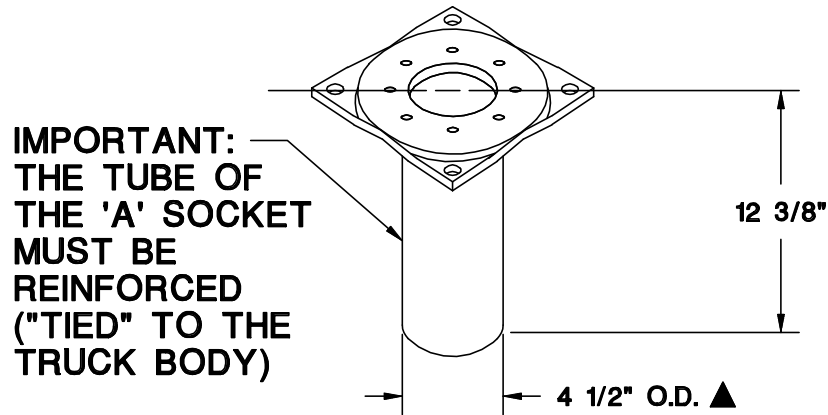
SNATCH BLOCK REQUIRED  
FOR LOADS OVER 1200 LBS.

- HEIGHT DIMENSIONS ARE FOR MAXIMUM CUT-DOWN MODEL AND ARE APPROX. 39" LESS THAN STANDARD CTFB CRANES.
- HEIGHT DIMENSIONS ARE FOR C-SOCKET MODELS
- DEDUCT 12 1/2" FROM HEIGHT DIMENSIONS FOR A-SOCKET MODELS

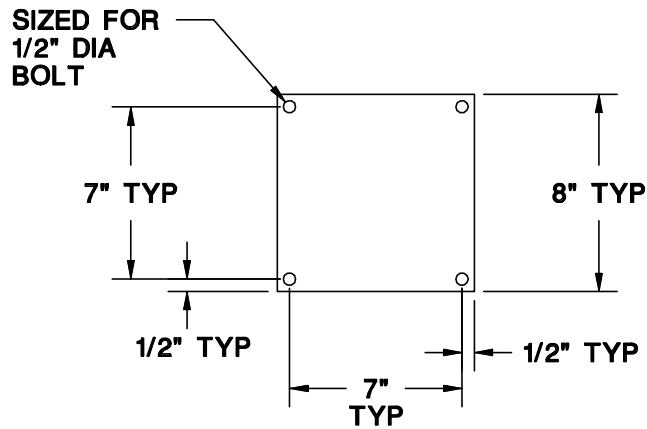
# TYPE 'A' SOCKET (13171)

## RECESS MOUNTING

WEIGHT 18 LBS.



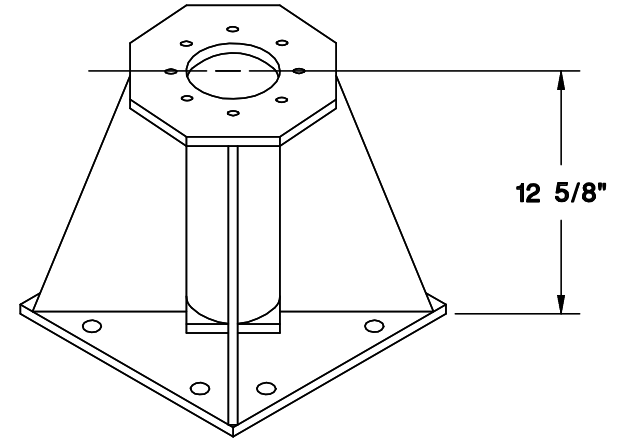
### MOUNTING DIMENSIONS



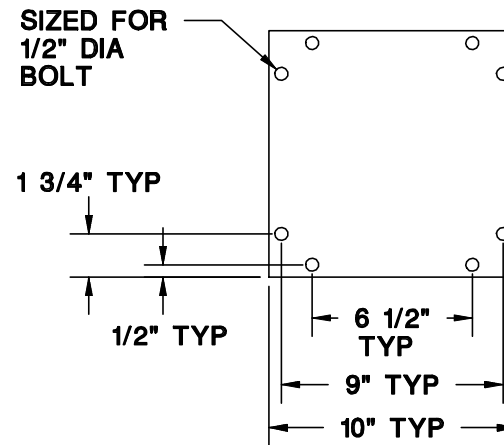
# TYPE 'C' SOCKET (13172)

## SURFACE MOUNTING

WEIGHT 36 LBS.



### MOUNTING DIMENSIONS



# CRANE SAFETY AND HAZARDS

CA, CE, CT, AND DT CRANES

## CAUTIONS

1. INSPECT VEHICLE AND CRANE, INCLUDING OPERATION, PRIOR TO USE DAILY.
2. DO NOT USE THIS EQUIPMENT EXCEPT ON SOLID, LEVEL SURFACE WITH CRANE MOUNTED ON FACTORY-RECOMMENDED TRUCK.
3. BEFORE OPERATING THE CRANE, REFER TO MAXIMUM LOAD (CAPACITY) CHART ON CRANE FOR OPERATING (LOAD) LIMITATIONS.
4. DO NOT OPERATE, WALK, OR STAND BENEATH BOOM OR A SUSPENDED LOAD.
5. FOR TRAVEL, BOOM MUST BE TIED DOWN IN THE STOWED POSITION.

## DANGER

- THIS CRANE IS NOT A PASSENGER LIFT
- IT IS NOT DESIGNED OR INTENDED TO BE USED TO LIFT, SUPPORT, OR OTHERWISE TRANSPORT PERSONNEL.

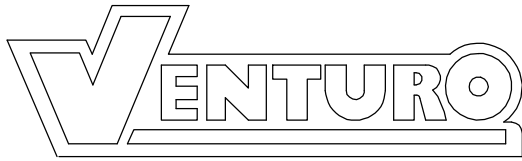
## YOU MUST NOT OPERATE THIS CRANE UNLESS

1. YOU HAVE BEEN TRAINED IN THE SAFE OPERATION OF THIS CRANE  
*AND*
2. YOU KNOW AND FOLLOW THE SAFETY AND OPERATING RECOMMENDATIONS CONTAINED IN THE MANUFACTURER'S MANUALS, YOUR EMPLOYER'S WORK RULES, AND APPLICABLE GOVERNMENT REGULATIONS. AN UNTRAINED OPERATOR SUBJECTS HIMSELF AND OTHERS TO DEATH OR SERIOUS INJURY.



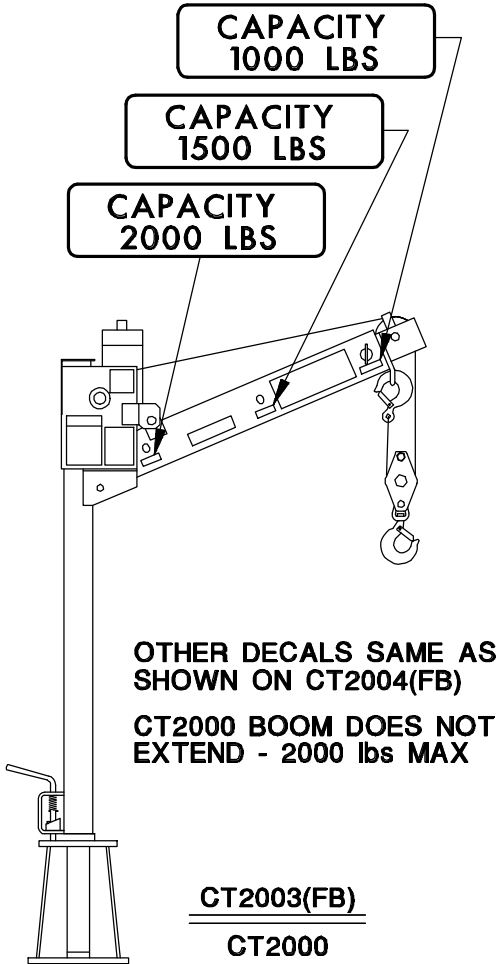
MFG., INC.  
CINCINNATI, OHIO

TITLE	INSTALLATION DWG	DATE	3-2-99C	SECTION	C150
	CA, CE, CT, AND DT	SUPERCEDES	10-17-97B		870701



DECAL 17389-4 2 REQ'D  
1 EACH SIDE

CAPACITY DECALS ON BOTH SIDES OF BOOM



**ANGER**

THIS CRANE IS NOT A PASSENGER LIFT  
IT IS NOT DESIGNED OR INTENDED TO BE USED TO  
LIFT, SUPPORT OR OTHERWISE TRANSPORT PERSONNEL.

YOU MUST NOT  
OPERATE THIS CRANE UNLESS:

- 1 YOU HAVE BEEN TRAINED IN THE SAFE OPERATION OF THIS CRANE, AND;
- 2 YOU KNOW AND FOLLOW THE SAFETY AND OPERATING RECOMMENDATIONS CONTAINED IN THE MANUFACTURERS MANUALS, YOUR EMPLOYERS WORK RULES AND APPLICABLE GOVERNMENT REGULATIONS.

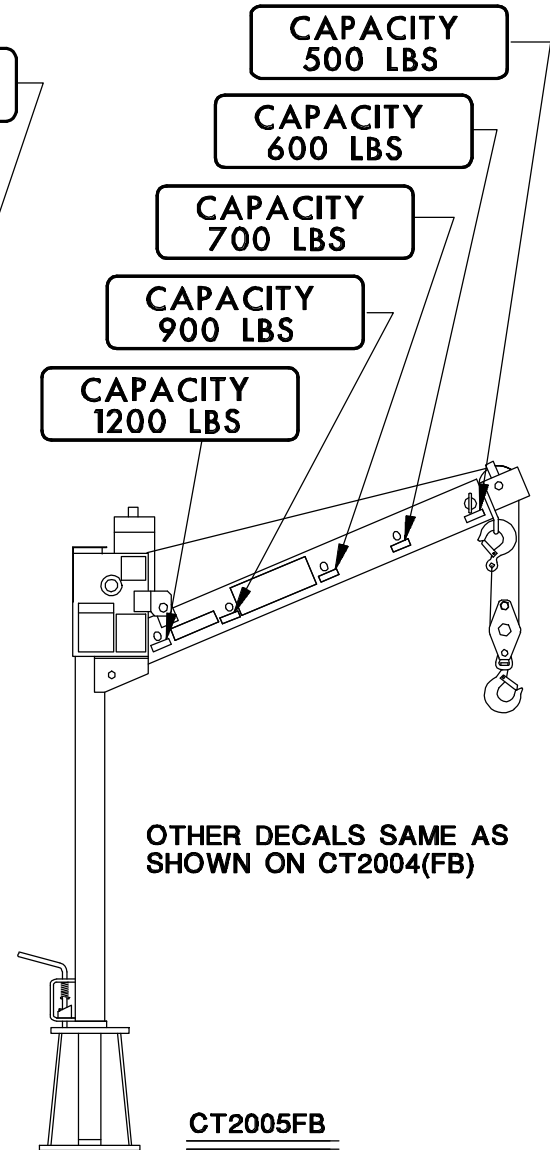
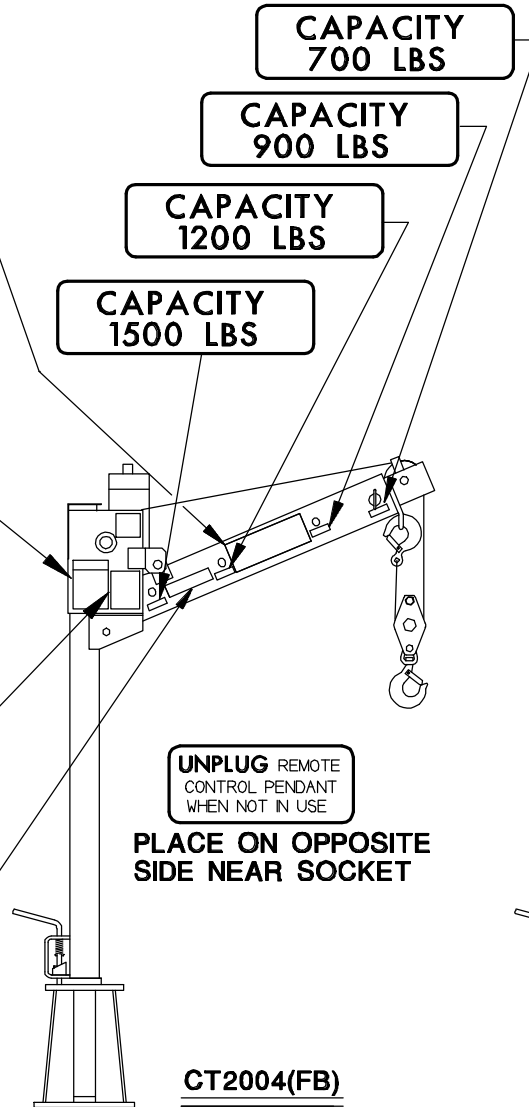
AN UNTRAINED OPERATOR SUBJECTS HIMSELF AND OTHERS TO DEATH AND SERIOUS INJURY

**CAUTION**

1. INSPECT VEHICLE AND CRANE INCLUDING OPERATION PRIOR TO USE DAILY
2. DO NOT USE THIS EQUIPMENT EXCEPT ON SOLID LEVEL SURFACE (IF CRANE MOUNTED ON FACTORY RECOMMENDED TRUCK)
3. BEFORE OPERATING THE CRANE, REFER TO MAXIMUM LOAD (CAPACITY) CHART ON CRANE FOR OPERATING (LOAD) LIMITATIONS
4. DO NOT OPERATE, ALK OR STAND BENEATH BOOM OR A SUSPENDED LOAD
5. UNPLUG PENDANT AND SHUT OFF MASTER DISCONNECT SWITCH WHEN CRANE IS NOT IN USE
6. FOR TRAVEL, BOOM MUST BE IN STOWED POSITION

**USE SNATCH BLOCK FOR LOADS OVER 1200 LBS**

1 EACH SIDE



TITLE  
**DECAL PLACEMENT**

DATE  
**10-14-97**

SECTION  
**C150**

**CT2000/3/4/5 & CT2003/4FB CRANES**

SUPERSEDES  
**3-6-96**

**16176**



# OPERATING INSTRUCTIONS

CA, CE, CT, & DT CRANES

## ELECTRIC WINCH

The winch is operated by a control switch in a plug-in remote pendant. Unplug the pendant and store it in the vehicle when the crane is not in use.

## TELESCOPING BOOM

On CE6K, CT & DT Cranes the boom can be manually extended. The hole in the extension section of the boom should be aligned with the slot in the stationary section at the position desired and the toggle pin inserted. The crane lifting capacity is shown at each toggle pin position on the CT & DT cranes. The CE6K has a decal on the mast which shows the capacities of the crane at its various angles and extensions.

## SWIVEL SNATCH BLOCK

On CA2000, CT200X, and DT Cranes, the swivel snatch block must be used for loads over 1200 lbs. On the CE6K, the swivel snatch block must be used on loads over 1000 lbs. It may also be used for lower loads to reduce lifting speed for better control and to prevent loads from spinning. CA1000 & CT100X Cranes have a permanently rigged swivel block.

## SWIVEL LOCK

On the CT & DT Cranes the hand lever operated swivel lock controls the 360° rotation of the crane and provides positive locking in 8 positions.

## BANDBRAKE

The CE6K is equipped with a band brake that provides unlimited rotational positioning.

## BOOM TIE DOWN

The load line should be used to tie down the boom to the socket or truck bed while the crane is not in use.

## OPTIONAL MASTER DISCONNECT SWITCH

This switch should be turned "OFF" when the crane is not in use to disconnect the crane from the battery.

# MAINTENANCE

The crane should be lubricated when the vehicle is serviced.

## WINCH GEAR BOX (CT & DT cranes only) ▲

Check the oil level by removing the plug in the side of the gear box. If the oil level is below the plug opening, fill with SAE 85W-140 Hypoid gear oil.

## WINCH DRIVE CHAIN (CT & DT cranes only) ▲

Oil lightly. **DO NOT GREASE.** Excess oil or grease will collect dirt and cause excessive chain wear. Inspect the chain and sprockets for excessive wear and proper alignment. Replace if excessively worn.

## CRANE SOCKET SWIVEL BEARINGS

The crane should be removed from the socket once a year or more often if excessive dirt is present. Dirt should be cleaned out from around the lower bearing. Use a rag or brush to apply a light weight oil several times to the lower and upper bearings which are both oilite bronze except for the CE, CT200X & DT Cranes upper bearing which does not require lubrication.



TITLE	INSTALLATION DWG	DATE	8-01-01C	SECTION	C200
	CA, CE, CT, & DT	SUPERCEDES	3-3-99B		870702

# IMPORTANT

## ADEQUATE WIRING IMPERATIVE FOR PROPER OPERATION

1. PROPER GROUND PATH - SEE DWG 15660
  
2. CURRENT DRAW IS SEVERAL HUNDRED AMPERES -  
ADEQUATE WIRE SIZE AND BATTERY CAPACITY IS ABSOLUTELY  
ESSENTIAL (SEE CHART BELOW.)

### MINIMUM WIRE GAUGE AND BATTERY SIZE

MODEL	TOTAL LENGTH OF CABLE (FT)*								12 VOLT BATTERY REQUIREMENTS	
	0-20	21-25	26-30	31-40	41-50	51-60	61-70	71-80	CCA (A)**	RC (MIN)***
CE6K CT2000 CT2003/4/5 DT7K	#4	#4	#2	#2	#1	#0	#0	#00	350	100
ET5500MPB ET5500R ET6KMPB ET6KR ET10K	#2	#2	#1	#0	#00	NOTRECOMMENDED			450	100
ET10KX	#2	#2	#1	#0	#00	NOTRECOMMENDED			550	150
ET25K ET25KX	SEE DRAWING I24600 FOR CABLE AND BATTERY REQUIREMENTS									

\* INCLUDES GROUND CABLE

\*\* CCA=COLD CRANKING AMPS AT 0' F.  
THE CCA RATING IS A MEASURE OF THE ABILITY OF THE BATTERY TO DELIVER A HIGH CURRENT FOR A SHORT PERIOD OF TIME.

\*\*\* RC=RESERVE CAPACITY IN MINUTES AT 25 AMPS AND 80' F.  
THE RC RATING IS A MEASURE OF THE PERIOD OF TIME THE BATTERY CAN SUPPLY A GIVEN CURRENT WITHOUT RECHARGING.



MFG., INC.  
CINCINNATI, OHIO

TITLE  
**CABLE & BATTERY**

**CE, CT, DT, & ET**

DATE  
**8-10-00R**

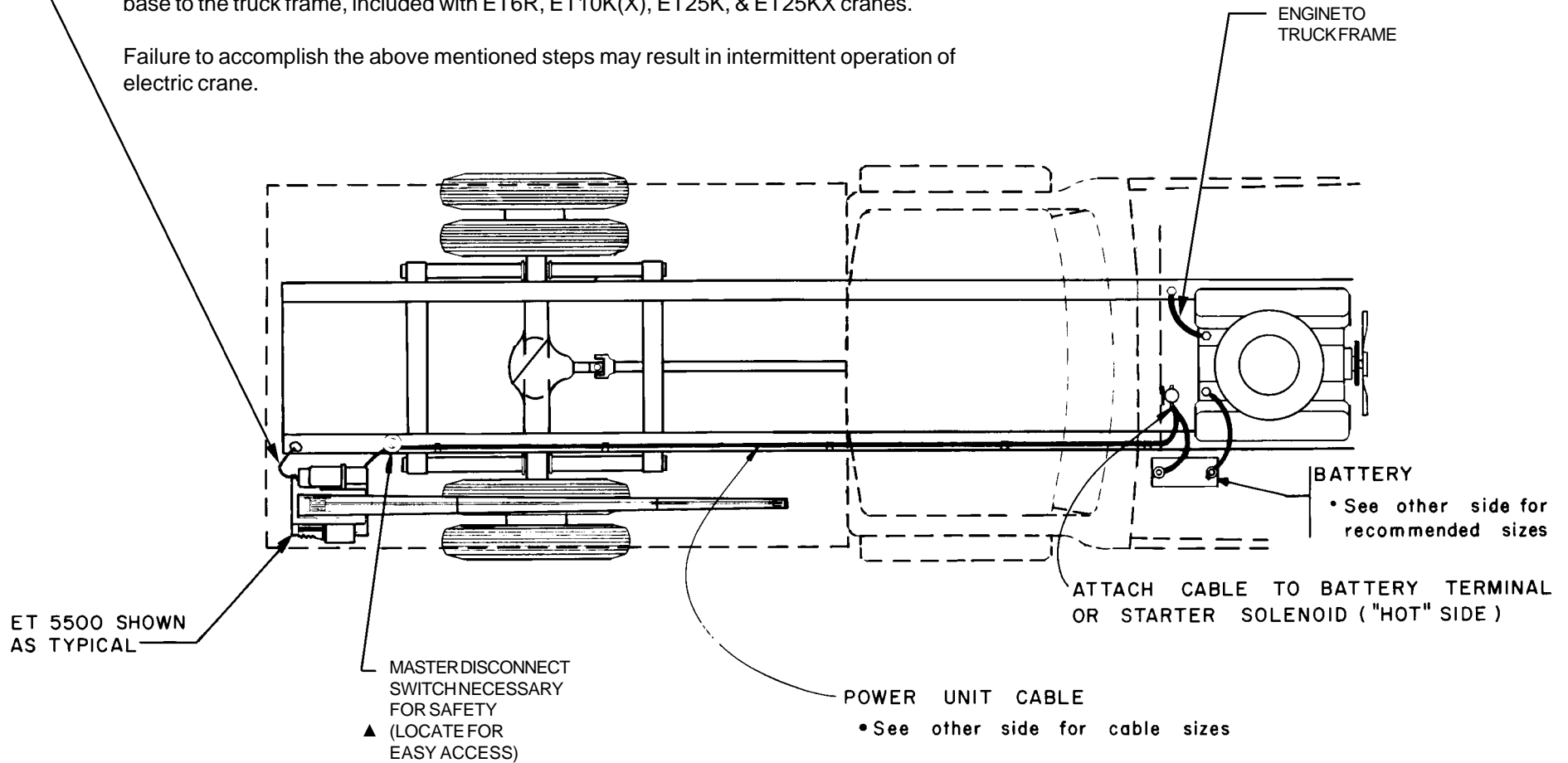
SUPERCEDES  
**3-3-99Q**

SECTION  
**C200**

**711105**

Important: The crane must make connection with the negative of the battery. To insure this, install a #2 gauge grounding strap from the engine to the truck frame (required if negative from battery is connected to the engine.) Also, install a #2 gauge grounding strap from the crane base to the truck frame, included with ET6R, ET10K(X), ET25K, & ET25KX cranes.

Failure to accomplish the above mentioned steps may result in intermittent operation of electric crane.



MANUFACTURING, INC.  
CINCINNATI, OHIO

TITLE  
**INSTALLATION - BATTERY CABLE**

DATE  
**11-7-01D**

SECTION  
**C200**

**WINCH & CRANE**

SUPERCEDES  
**10-10-01C**

**15660**

## SELECTION

The chart below shows the maximum working load and breaking strength of 7 X 19 Galvanized AIRCRAFT Grade Wire Rope in various diameters. The breaking strength is 3-1/2 times the maximum working load. Do not use wire rope with a Maximum Working Load rating less than the single line capacity of the crane. Use of wire rope diameter larger than the size furnished with the crane will reduce the fatigue life of the wire rope.

<u>WIRE ROPE DIAMETER</u>	<u>MAXIMUM WORKING LOAD</u>	<u>BREAKING STRENGTH</u>
1/8"	570 lbs	2000 lbs
5/32"	800 lbs	2800 lbs
3/16"	1200 lbs	4200 lbs
7/32"	1600 lbs	5600 lbs
1/4"	2000 lbs	7000 lbs
5/16"	2800 lbs	9800 lbs
3/8"	4114 lbs	14400 lbs

## INSTALLATION

1. Unwind coil of rope by rolling it along floor. This will prevent kinking.
2. Most VENTURO Cranes are provided with a slot in the winch drum side plate for attaching the end of the wire rope with a stop collar. A hole in the housing allows access for the end of the wire rope when inserted thru the slot.

The ET20K(X) & ET25K(X) Cranes have a clamp built into the winch drum and do not use a stop collar.

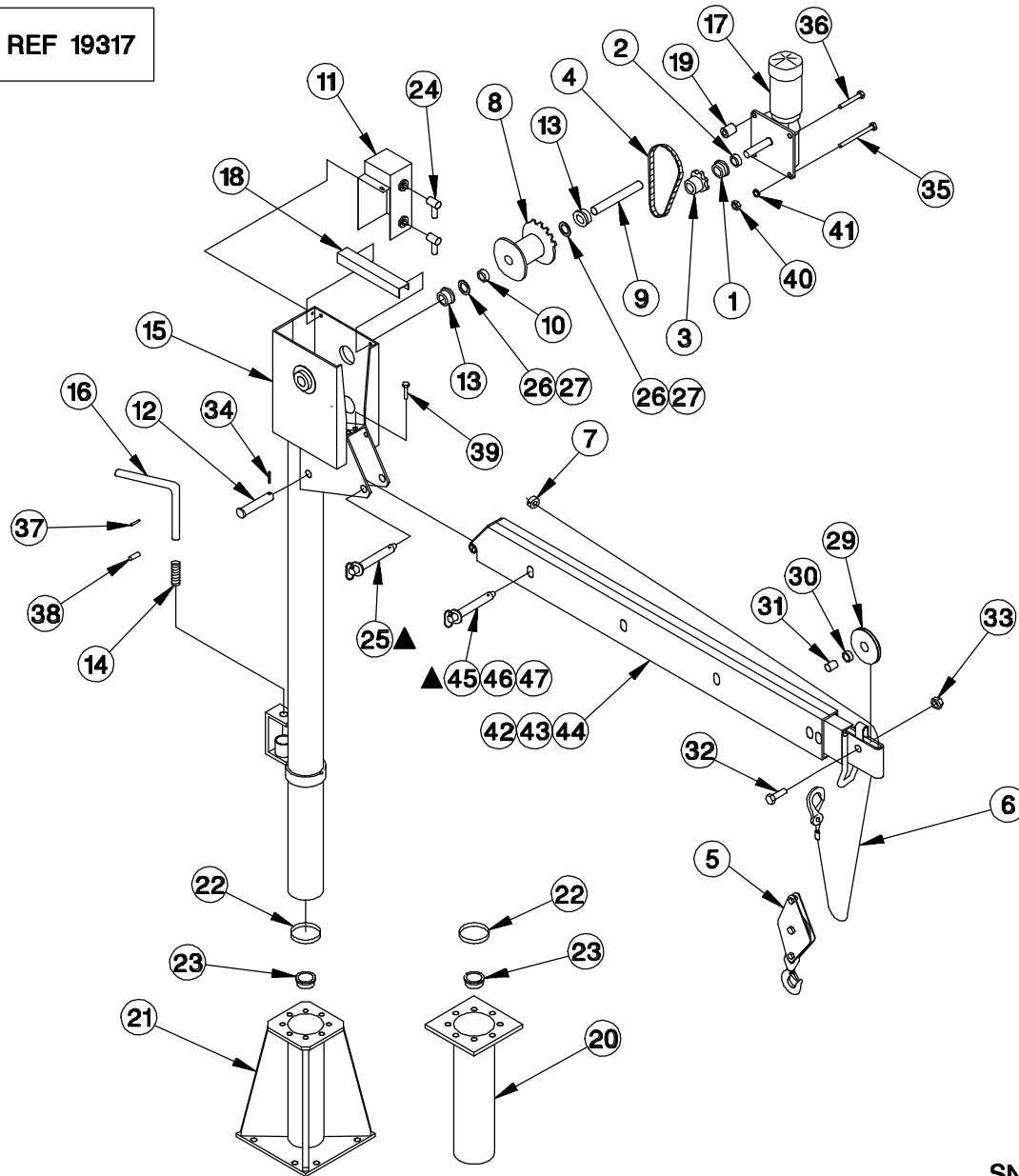
3. THERE MUST ALWAYS BE AT LEAST (3) TURNS OF WIRE ROPE ON THE DRUM WHEN UNDER LOAD.



MFG., INC.  
CINCINNATI, OHIO

TITLE	DATE	SECTION
WIRE ROPE SPECS	10-23-97G	WC 200
VENTURO WINCH & CRANE	SUPERCEDES 4-27-92F	711006

REPLACEMENT PARTS LIST REF 19317



SN: 20055 & UP



TITLE  
REPLACEMENT PARTS DWG

DATE  
3-27-98A

SECTION  
C400

CT2003FB/CT2004FB/CT2005

SUPERSEDES  
6-26-97

19316

ITEM #	PART #	DESCRIPTION	ITEM #	PART #	DESCRIPTION
1	00181-3	BALL THRUST BEARING - 1-7/8" OD x 3/4" ID	41	!LWSH-038	LOCK WASHER - 3/8"
2	00210	THRUST COLLAR - 3/4" BORE	42	19333	BOOM WELDED ASSEMBLY - 3 FT
3	15999	SPROCKET - 3/4" BORE	43	19334	BOOM WELDED ASSEMBLY - 4 FT
4	00867-1	ROTATIONDRIVE CHAIN	44	19335	BOOM WELDED ASSEMBLY - 5 FT
5	13149-1	HEADACHE BALL ASSEMBLY	▲ 45	18541-36-ASSY	PIN ASSEMBLY - 3/4" O.D. x 3-1/2" LONG - 3 FT BOOM EXT
6	15810-3/16-35	WIRE ROPE ASSEMBLY - 3/16" x 35 FT	▲ 46	18541-48-ASSY	PIN ASSEMBLY - 3/4" O.D. x 3-1/2" LONG - 4 FT BOOM EXT
7	13463-1	STOP SLEEVE	▲ 47	18541-60-ASSY	PIN ASSEMBLY - 3/4" O.D. x 3-1/2" LONG - 5 FT BOOM EXT
8	01149	CABLE DRUM	48	-	-
9	01153	MAIN SHAFT - CABLE DRUM	49	-	-
10	01158	THRUST COLLAR - MAIN SHAFT - 1" BORE	50	-	-
11	19421	CONTACTOR, SOCKET & COVER SUB ASSEMBLY	51	-	-
12	13401-2B	PIVOT PIN - CYL ROD	52	-	-
13	01299	FLANGED BEARING - 1" ID x 2" OD	53	-	-
14	11889	SPRING	54	-	-
15	19331	WELDED MAST ASSEMBLY	55	-	-
16	14785	LOCKBOLT	56	-	-
17	16105-CHIG	WINCH POWER UNIT	57	-	-
18	16972	CHAIN COVER	58	-	-
19	01155-1	SPACER	59	-	-
20	13171	MOUNTING SOCKET - TYPE A	60	-	-
21	13172	MOUNTING SOCKET - TYPE C	61	-	-
22	13179	BEARING - 4" ID x 1" WIDTH	62	-	-
23	11893	BEARING - 1.5" ID x 9/16" WIDTH	63	-	-
24	18542	BOOT - MOTOR TERMINAL	64	-	-
▲ 25	18541	PIN ASSEMBLY - 3/4" OD x 3-1/2" LONG - BOOM ELEVATION	65	-	-
26	12534-8	BUSHING - 1" ID x 1-1/2" OD x 14 GA	66	-	-
27	12534-9	BUSHING - 1" ID x 1-1/2" OD x 18 GA	67	-	-
28	-	-	68	-	-
29	01212-2	CABLE SHEAVE - 4" OD x 1-1/64" ID	69	-	-
30	01272-1	BUSHING - CABLE SHEAVE	70	-	-
31	13168-2	SLEEVE - MIN RUN 30	71	-	-
32	!HHCS06311175	HEX HEAD CAP SCREW - 5/8"-11 x 1-3/4"	72	-	-
33	!JNUT-06311N	JAM LOCK NUT - 5/8"-11	73	-	-
34	!RPIN-016125	ROLL PIN - 5/32" x 1-1/4"	74	-	-
35	!HHCS03816450	HEX HEAD CAP SCREW - 3/8"-16 x 4-1/2"	75	-	-
36	!HHCS03816275	HEX HEAD CAP SCREW - 3/8"-16 x 2-3/4" (3 PLC)	76	-	-
37	!RPIN-019125	ROLL PIN - 3/16" x 1-1/4"	77	-	-
38	!RPIN-031125	ROLL PIN - 5/16" x 1-1/4"	78	-	-
39	!HHCS03816100	HEX HEAD CAP SCREW - 3/8"-16 x 1"	79	-	-
40	!HNUT-03816	HEX NUT - 3/8"-16	80	-	-
					REPLACEMENT PARTS DRAWING REF 19316
					<b>SN: 20055 &amp; UP</b>



MANUFACTURING, INC.  
CINCINNATI, OHIO

TITLE  
**REPLACEMENT PARTS**

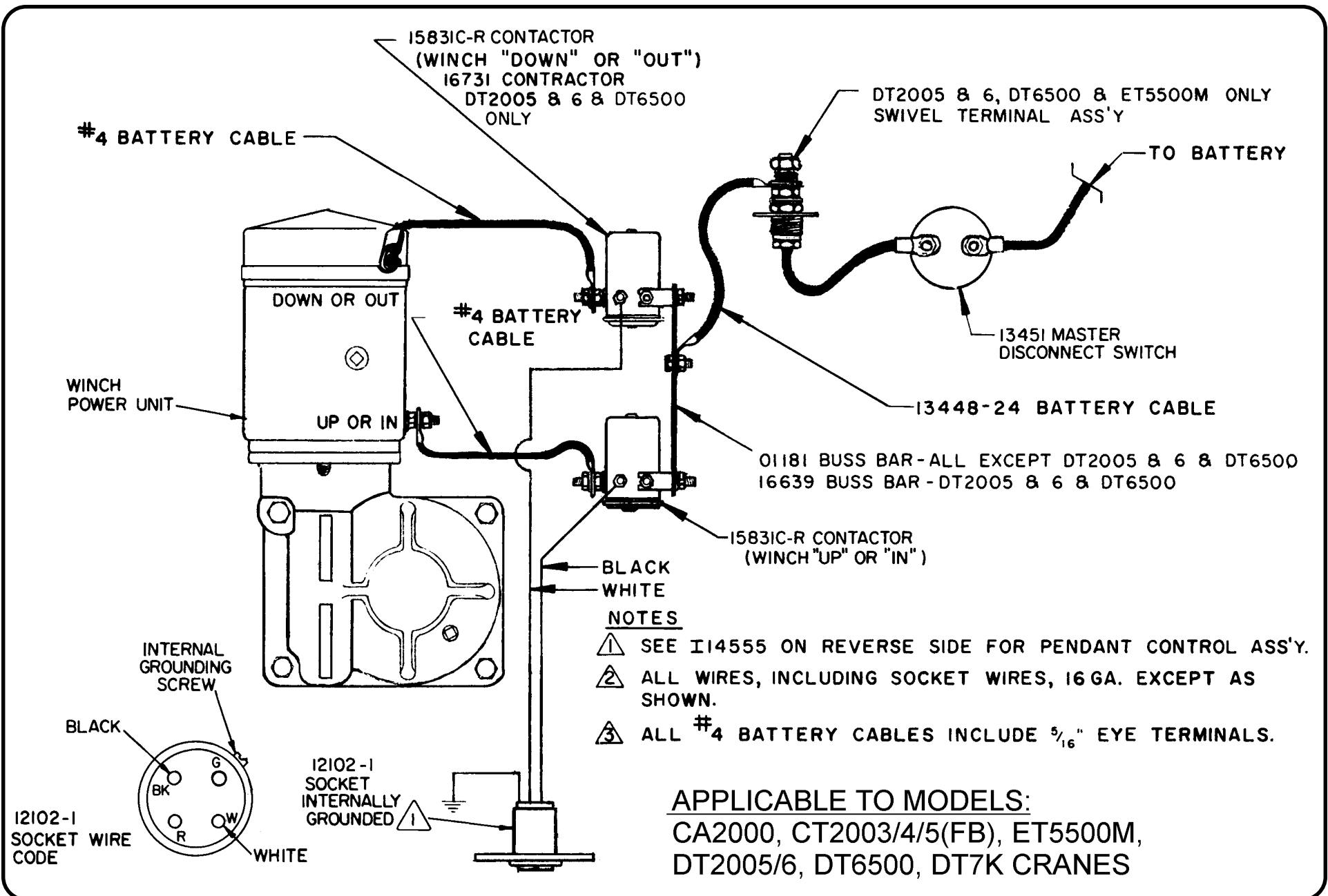
DATE  
**3-27-98B**

SECTION  
**C400**

SUPERCEDES  
**CT2003FB/CT2004FB/CT2005**

SUPERCEDES  
**12-2-97A**

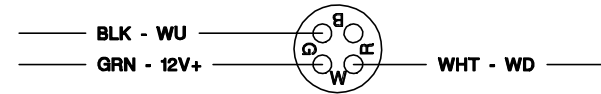
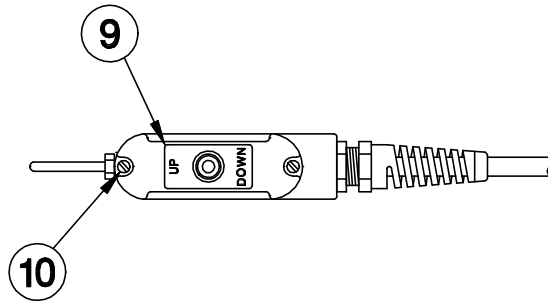
**19317**



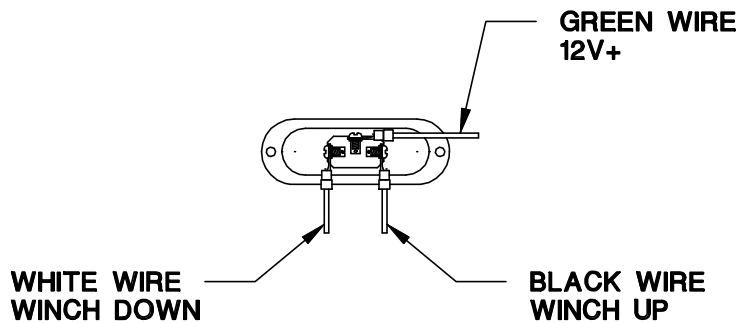
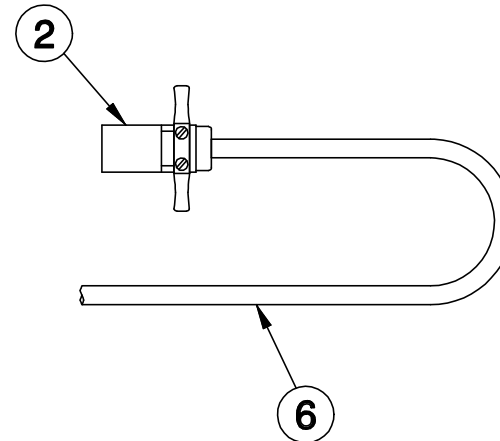
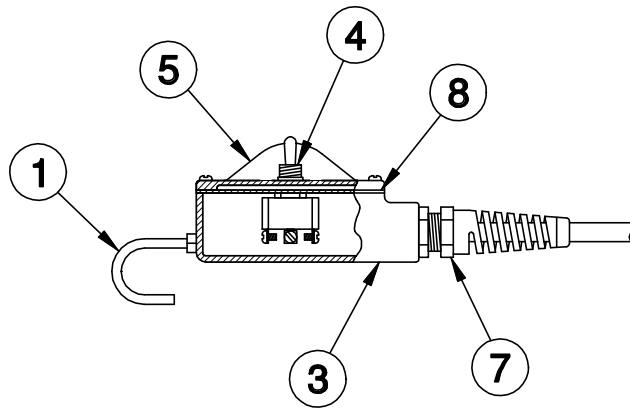
**VENTURO** MANUFACTURING, INC.  
CINCINNATI, OHIO

TITLE	DATE	SECTION
WIRING DIAGRAM	6-29-98F	C400
WINCH POWER UNIT	SUPERCEDES 5-17-90E	15628

# 14555 SERIES PENDANT CORD



PLUG - BACKSIDE VIEW



10	2	IPHCS#0832050	PHCS 8-32 x 1/2
9	1	14793-2	DECAL, UP & DOWN FOR PENDANT
8	1	14958	GASKET 1/2"
7	1	14578	1/2" STRAIN RELIEF
6	1	14542-18Sxx	CORD ASSY (xx = LENGTH IN FT.)
5	1	14064	PENDANT COVER
4	1	13763	TOGGLE SWITCH
3	1	13382	ENCLOSURE 1/2"
2	1	12102-2	PLUG - 4 POLE
1	1	11557	PENDANT HOOK
ITEM	QTY	PART NO.	DESCRIPTION

**VENTURO** MANUFACTURING, INC.  
CINCINNATI, OHIO

TITLE  
REPL. PARTS DWG.

DATE  
5-20-99K

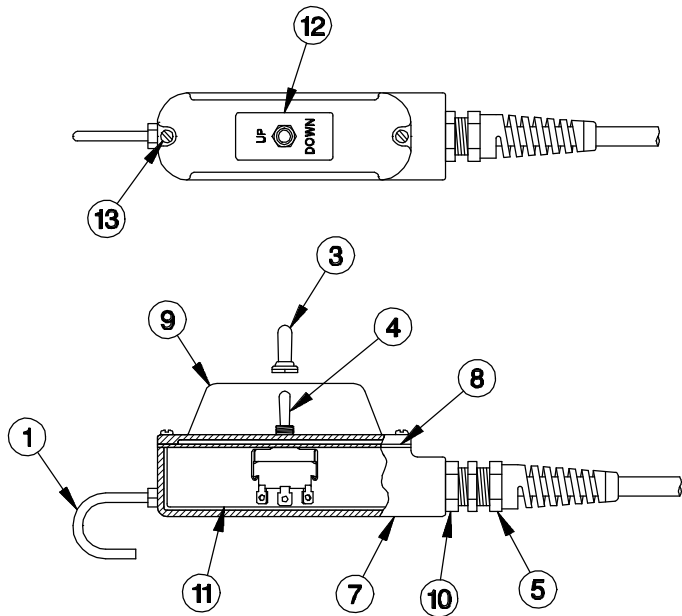
SECTION  
C400

1 FUNCTION CRANES

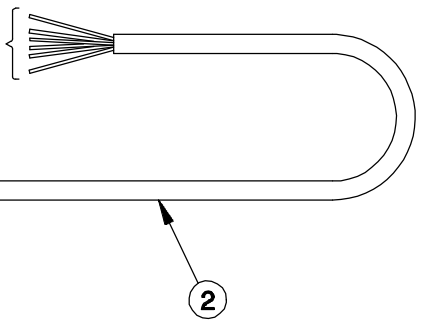
SUPERSEDES  
12-11-97J

**14555**

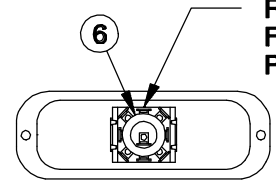




REF. 19457  
FOR WIRING  
SCHEMATIC



REF. 19458  
FOR WIRING  
PROCEDURE / SCHEMATIC



**PROCEDURES FOR A/C PENDANT CORD**

1. REMOVE ALL HARDWARE FROM TOGGLE SWITCH INCLUDING THE HEX NUT(S) FROM THE TOGGLE STEM.
2. INSERT THE TOGGLE SWITCH INTO CONDULET COVER AND SECURE IN PLACE WITH RUBBER BOOT (13777) ONLY USE NO OTHER HARDWARE. TURN SWITCH (NOT BOOT) UNTIL SNUG.
3. INSTALL CONDULET HOOK INTO CONDULET WITH R/C 56 APPLIED TO THREADS - NO NUT - USE NUT ON INSIDE TO SECURE GROUND WIRE RING TERMINAL.

13	2	IPHCS#0832050	PHCS 8-32 x 1/2
12	1	14793-2	DECAL - UP & DOWN
11	1	15629	INSULATOR FOR CONDULET
10	1	HRDB16MP-12FP	HYD BUSHING
9	1	15689	PENDANT COVER
8	1	25625	GASKET 1"
7	1	25624	ENCLOSURE 1"
6	1	16771-1	FIBER WASHER - 1/2" I.D. x 15/16" O.D. x 1/32" THK
5	1	25534	PLASTIC 3/4" STRAIN RELIEF
4	1	19449	TOGGLE SWITCH
3	1	13777	TOGGLE BOOT
2	1	ELEC-16-6	ELECTRIC CORD - SJO 16-6
1	1	11557	PENDANT HOOK
ITEM	QTY	PART NO.	DESCRIPTION



TITLE  
REPL. PARTS DWG.



DATE  
4-9-98C

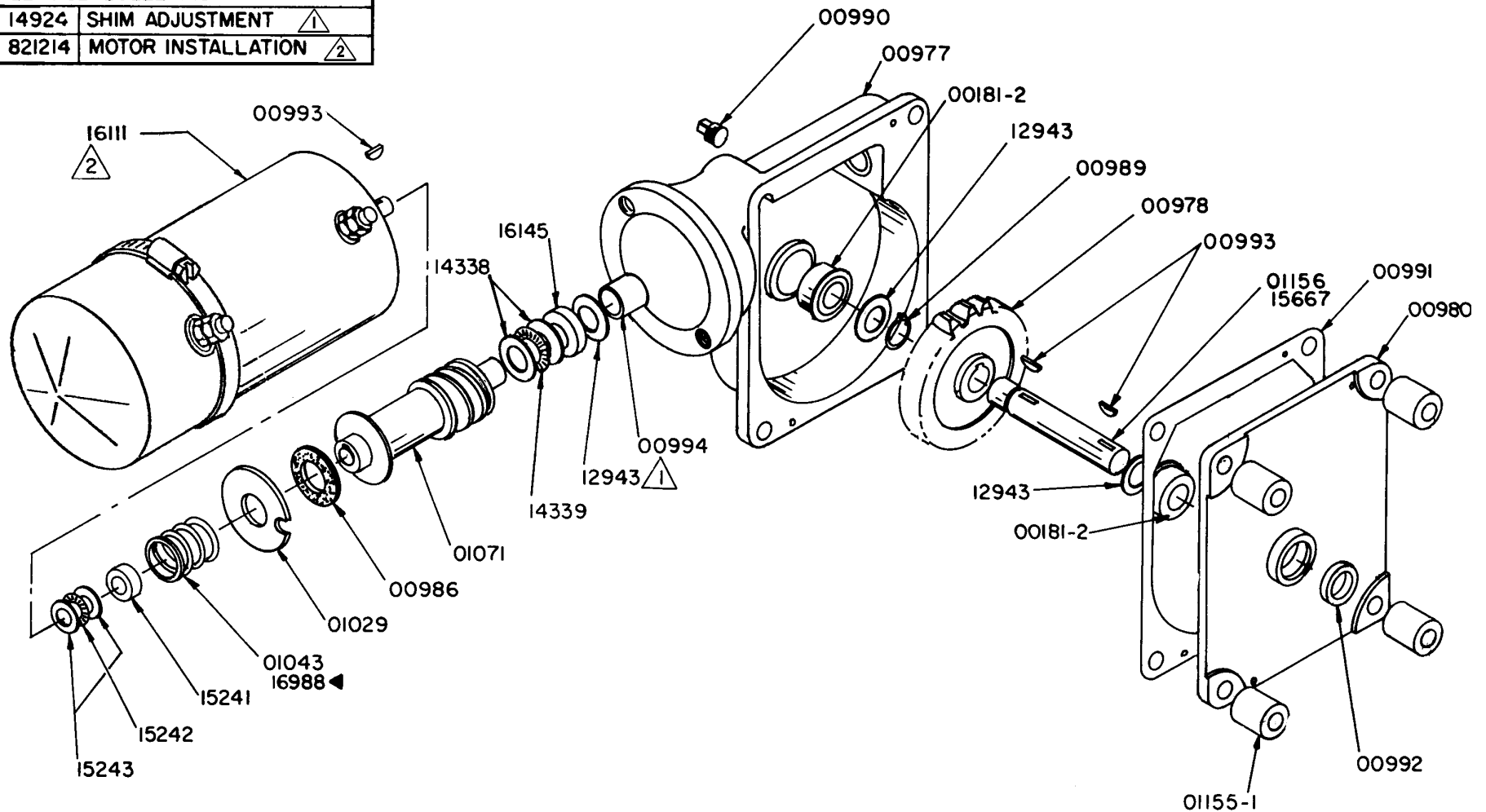
SECTION  
C400

A/C PENDANT CORD

SUPERSEDES  
9-30-94B

12005-1

SERVICE BULLETINS	
14924	SHIM ADJUSTMENT 
821214	MOTOR INSTALLATION 



SEE DWG. 14924/14926 FOR SERVICE INSTRUCTION

16100 SERIES POWER UNITS



MANUFACTURING, INC.  
CINCINNATI, OHIO

TITLE  
**REPLACEMENT PARTS**

DATE  
**6-17-98D**

SECTION  
**C400**

**WINCH & CRANE**

SUPERCEDES  
**10-3-88C**

**116100**

# REPLACEMENT PARTS LIST - 16100 ELECTRIC POWER UNIT

MODEL(S): ET5500MPB, ET6KM, ET6KR

PART NO.	DESCRIPTION
16101 16102 16105 16106 16107	POWER UNIT - LONG SHAFT - ET5500R WINCH <sup>△</sup> POWER UNIT - SHORT SHAFT - ET5500R ROTATION POWER UNIT - LONG SHAFT - CA 2000, CT 2003, WA/SL 3000 (WITH SPACERS) POWER UNIT - LONG SHAFT - ET5500 WINCH (WITHOUT SPACERS) <sup>△</sup> POWER UNIT - SHORT SHAFT - ET5500R ROTATION
00181-2 00977 00978 00980 * 00986	FLANGE BEARING - 3/4" BORE x 1 3/4" O.D. GEAR CASE (INCLUDES 00994 BUSHING) WORM GEAR BASE PLATE BRAKE DISC
* 00989 00990 * 00991 * 00992 * 00993 <sup>△</sup>	LOCK RING OIL PLUG - 1/4" PIPE GASKET OIL SEAL KEY - #9 WOODRUFF
00994 01029 01043 <sup>△</sup> 01071 01155-1	BUSHING BRAKE PLATE BRAKE SPRING (16102 & 16107 ROTATION POWER UNIT ONLY) WORM SHAFT SPACER (16105 ONLY)
01156 * 12943-1 <sup>△</sup> * 12943-2 <sup>△</sup> * 12943-3 <sup>△</sup> 14338	WORM GEAR SHAFT - 3/4" x 5 3/16" LONG (16105 & 16106 ONLY) SHIM WASHER - .005" THICK (AS REQUIRED) SHIM WASHER - .015" THICK (AS REQUIRED) SHIM WASHER - .030" THICK (AS REQUIRED) NEEDLE THRUST RACE 3/4" I.D.
14339 15241 15242 15243 15667	NEEDLE THRUST BEARING 3/4" I.D. SPACER (INSTALL NEXT TO BRAKE PLATE) NEEDLE THRUST BEARING 5/8" I.D. NEEDLE THRUST RACE .092" x 5/8" I.D. WORM GEAR SHAFT - 3/4" x 4 3/16" LONG (16102 & 16107 ONLY)
16111 <sup>△</sup> 16145 16988 <sup>△</sup>	MOTOR - 12 VOLT 4 1/2" DIAMETER SPACER BRAKE SPRING (16101, 16105 & 16106 WINCH POWER UNITS ONLY)
14889 15290	MOTOR REPAIR KIT SMALL PARTS KIT (INCLUDES ITEMS MARKED *)

<sup>△</sup>1 AVAILABLE ONLY AS PART OF 15290 SMALL PARTS KIT

<sup>△</sup>2 16101 POWER UNIT REPLACED BY 16106 POWER UNIT  
16102 POWER UNIT REPLACED BY 16107 POWER UNIT

<sup>△</sup>3 REPLACE 30E & 16100 POWER UNITS AS FOLLOWS:  
16105 REPLACES 11497  
16106 REPLACES 11497NS & 16101  
16107 REPLACES 16102

<sup>△</sup>4 16111 MOTOR REPLACES 01024 E & F & 16112 MOTORS  
ON ALL 30E & 16100 SERIES POWER UNITS

<sup>△</sup>5 16988 BRAKE SPRING REPLACES 01043 BRAKE SPRING ON  
16101, 16105 & 16106 WINCH POWER UNITS ONLY



MFG., INC.  
CINCINNATI, OHIO

TITLE  
**REPL. PARTS LIST**

**16100 ELECTRIC PU**

DATE  
**8-10-99D**

SUPERCEDES  
**6-17-98C**

SECTION  
**C400**

**811016**