



PARTS & INSTALLATION MANUAL

CE6K

Included in this manual:

CE6K

- 2,000 lb Electric Service Crane
- Manual Elevation & Rotation with Band Brake
- 3-5 ft or 4-7 ft Manual Boom Extension

VENCO VENTURO INDUSTRIES LLC
12110 BEST PLACE | CINCINNATI, OHIO 45241
800-226-2238



This manual also available online at www.venturo.com.

CE6K

INST-19770 - 8/13/2025 (Rev: NEW0)

7607100A

DESCRIPTION & SPECIFICATIONS

19771 INSTALLATION DIMENSIONS; CE6K, 3-5 FT BOOM
19772 INSTALLATION DIMENSIONS; CE6K, 4-7 FT BOOM
19778 INSTALLATION DIMENSIONS; CE6K, 3-5 FT BOOM (AC)
19779 INSTALLATION DIMENSIONS; CE6K, 4-7 FT BOOM (AC)
19767 INSTALLATION DIMENSIONS; 19614 BASE PLATE

7607150A

SAFETY

870701 SAFETY & HAZARDS - GENERAL
21353 SAFETY DECALS (1/2)
21384 SAFETY DECALS (2/2)
21370 DECALS; MODEL & CAPACITY, CE6K (DC & AC)
21371 DECALS; MISCELLANEOUS (DC)

7607200A

INSTALLATION

870702 OPERATION & MAINTENANCE INSTRUCTIONS
19774 PIN POSITIONS FOR VARIOUS BOOM LOCATIONS
711105 CABLE & BATTERY REQUIREMENTS; ELECTRIC CRANES
15660 INSTALLATION DWG; BATTERY CABLE
20970 WIRE ROPE INSTALLATION
19775 DIAGRAMS; WINCH WIRING
22648 ILLUSTRATION; ELECTRICAL, SUPERWINCH C1000
22856 COMPONENT LIST; ELECTRICAL, SUPERWINCH C1000
24120 WIRING DIAGRAM, HEAVY DUTY WINCH

7607400A

REPLACEMENT PARTS

19776 REPLACEMENT PARTS DWG; CE6K
19777 REPLACEMENT PARTS LIST; CE6K
20797 REPLACEMENT PARTS DWG; 19665 WINCH (SUPERWINCH, 12VDC)
20796 REPLACEMENT PARTS LIST; 19665 WINCH (SUPERWINCH, 12VDC)
20799 REPLACEMENT PARTS DWG & LIST; WARN WINCH (CE6K-HD)
19773 DECAL PLACEMENT
28060 FIELD SERVICE LABEL KIT

12-00073_VNT1 WARRANTY PAGE

SECTION 100

DESCRIPTION

&

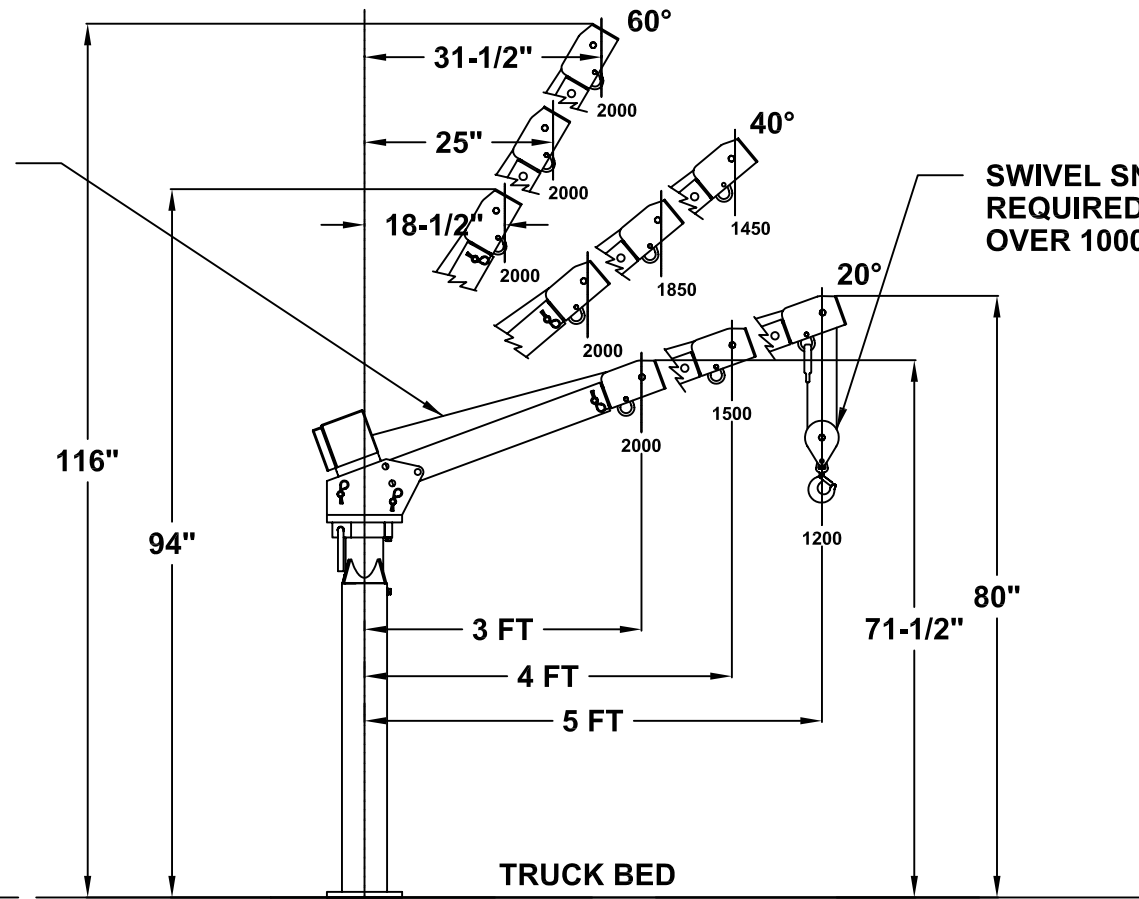
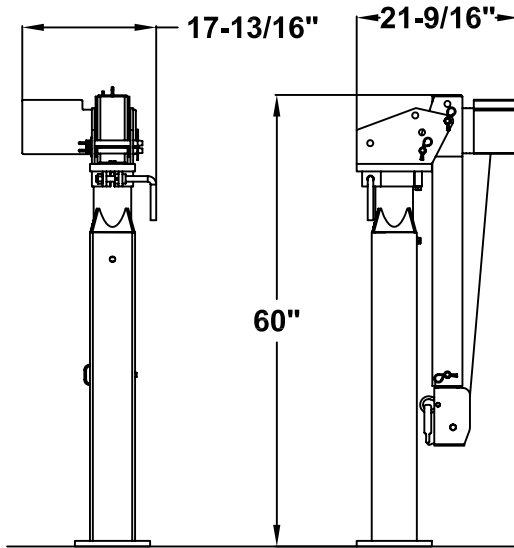
SPECIFICATIONS



VENCO VENTURO INDUSTRIES LLC
CINCINNATI, OHIO

REAR VIEW

▲
SWING RADIUS: 3/16" DIA WIRE ROPE
 STD. DUTY WINCH = 12"
 HVY DUTY WINCH = 8-1/4"
BOOM IN FOLDED POSITION



WARNING: THESE PRODUCTS ARE NOT PASSENGER LIFTS. THEY ARE NOT DESIGNED OR INTENDED TO BE USED TO LIFT, SUPPORT OR OTHERWISE TRANSPORT PERSONNEL.

PERFORMANCE CHARACTERISTICS		
LOAD CAPACITY	PART LINE	LIFTING SPEED AT CAPACITY LOAD
0 LBS	1	20 FT/MIN
1000 LBS	1	15 FT/MIN
1000 LBS	2	8 FT/MIN
2000 LBS	2	7 FT/MIN

SNATCH BLOCK REQUIRED FOR LOADS OVER 1000 LBS.

NET WEIGHT 247 LBS.



MANUFACTURING, INC.
 CINCINNATI, OHIO

TITLE
INSTALLATION DRAWING

CE6K 3-5 FT BOOM

DATE
11-9-01C

SUPERSEDES
4-7-99B

SECTION
C100

19771

REAR VIEW

SWING RADIUS:
STD DUTY WINCH = 12"
HVY DUTY WINCH = 8-1/4"

3/16" DIA WIRE ROPE
35 FT

BOOM IN FOLDED
POSITION

16 11/16"

20 3/16"

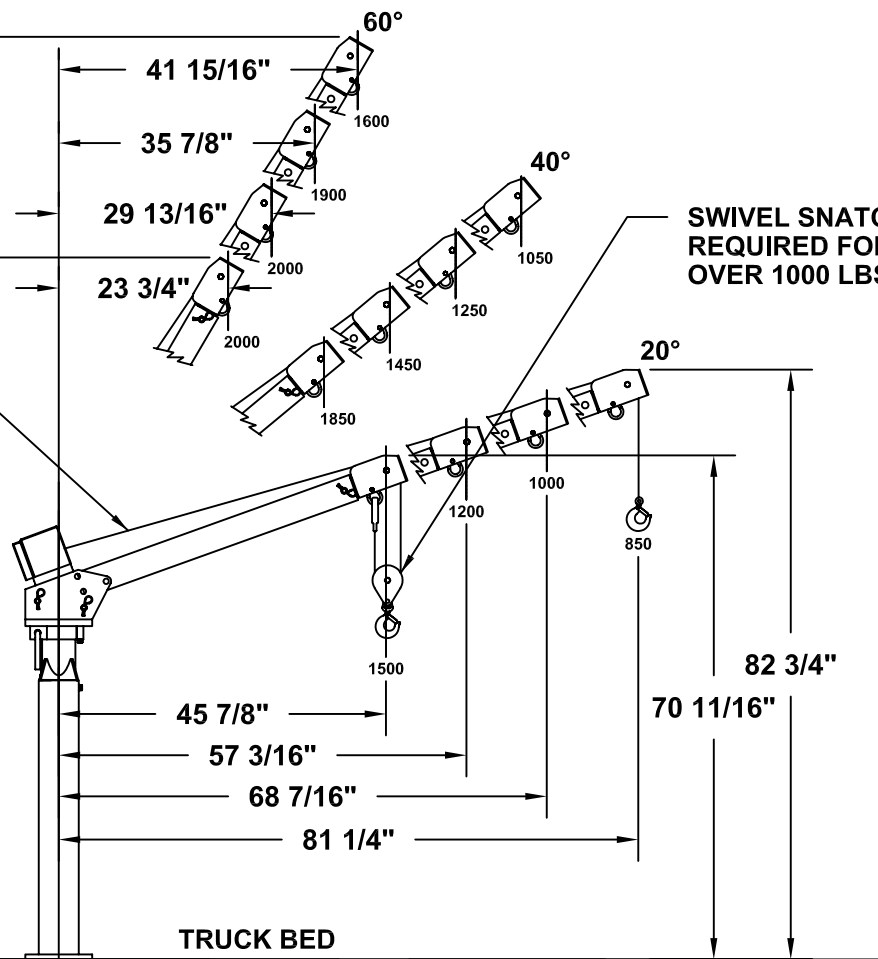
56 1/4"

129 3/8"

98 7/16"

TRUCK BED

**WARNING: THESE PRODUCTS
ARE NOT PASSENGER LIFTS.
THEY ARE NOT DESIGNED OR
INTENDED TO BE USED TO
LIFT, SUPPORT OR OTHERWISE
TRANSPORT PERSONNEL.**



**SWIVEL SNATCH BLOCK
REQUIRED FOR LOADS
OVER 1000 LBS.**

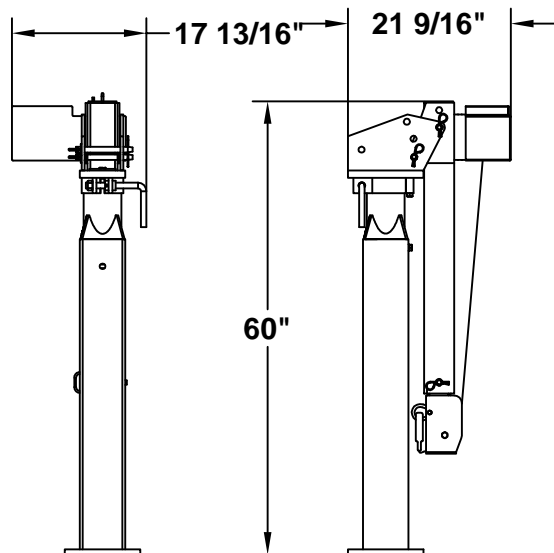
PERFORMANCE CHARACTERISTICS

LOAD CAPACITY	PART LINE	LIFTING SPEED AT CAPACITY LOAD
0 LBS	1	20 FT/MIN
1000 LBS	1	15 FT/MIN
1000 LBS	2	8 FT/MIN
2000 LBS	2	7 FT/MIN

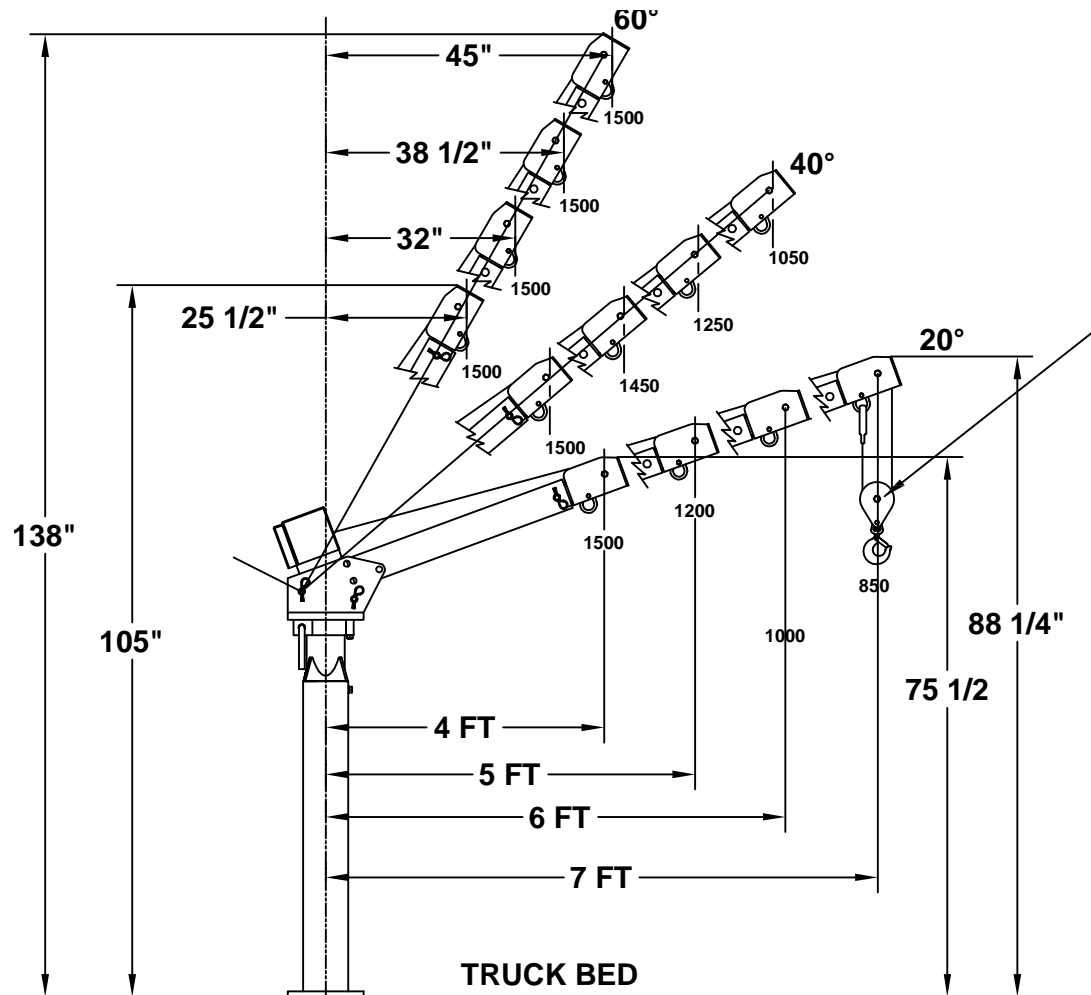
**SNATCH BLOCK REQUIRED FOR LOADS
OVER 1000 LBS.**

NET WEIGHT 265 LBS.

REAR VIEW



BOOM IN FOLDED POSITION



LOAD BLOCK ▲
(REQUIRED FOR
LOADS 750LBS AND
GREATER)

TRUCK BED

**WARNING: THESE PRODUCTS
ARE NOT PASSENGER LIFTS.
THEY ARE NOT DESIGNED OR
INTENDED TO BE USED TO
LIFT, SUPPORT OR OTHERWISE
TRANSPORT PERSONNEL.**

A/C WINCH PERFORMANCE CHARACTERISTICS

LOAD CAPACITY	PART LINE	LIFTING SPEED AT CAPACITY LOAD
0 LBS	1	13.8 FT/MIN
250 LBS	1	12.0 FT/MIN
500 LBS	1	10.9 FT/MIN
750 LBS	2	5.0 FT/MIN
1000 LBS	2	4.6 FT/MIN

CAPACITIES (AC)

BOOM LENGTH		BOOM ANGLE		
		20°	40°	60°
3 - 5 FT & 4 - 7 FT	3	1500	1500	1500
	4	1500	1500	1500
	5	1200	1450	1500
	6	1000	1250	1500
	7	850	1050	1500



MANUFACTURING, INC.
CINCINNATI, OHIO

TITLE

INSTALLATION DRAWING

CE6K 4-7 FT BOOM - AC WINCH

DATE

03-25-16B

SUPERSEDES

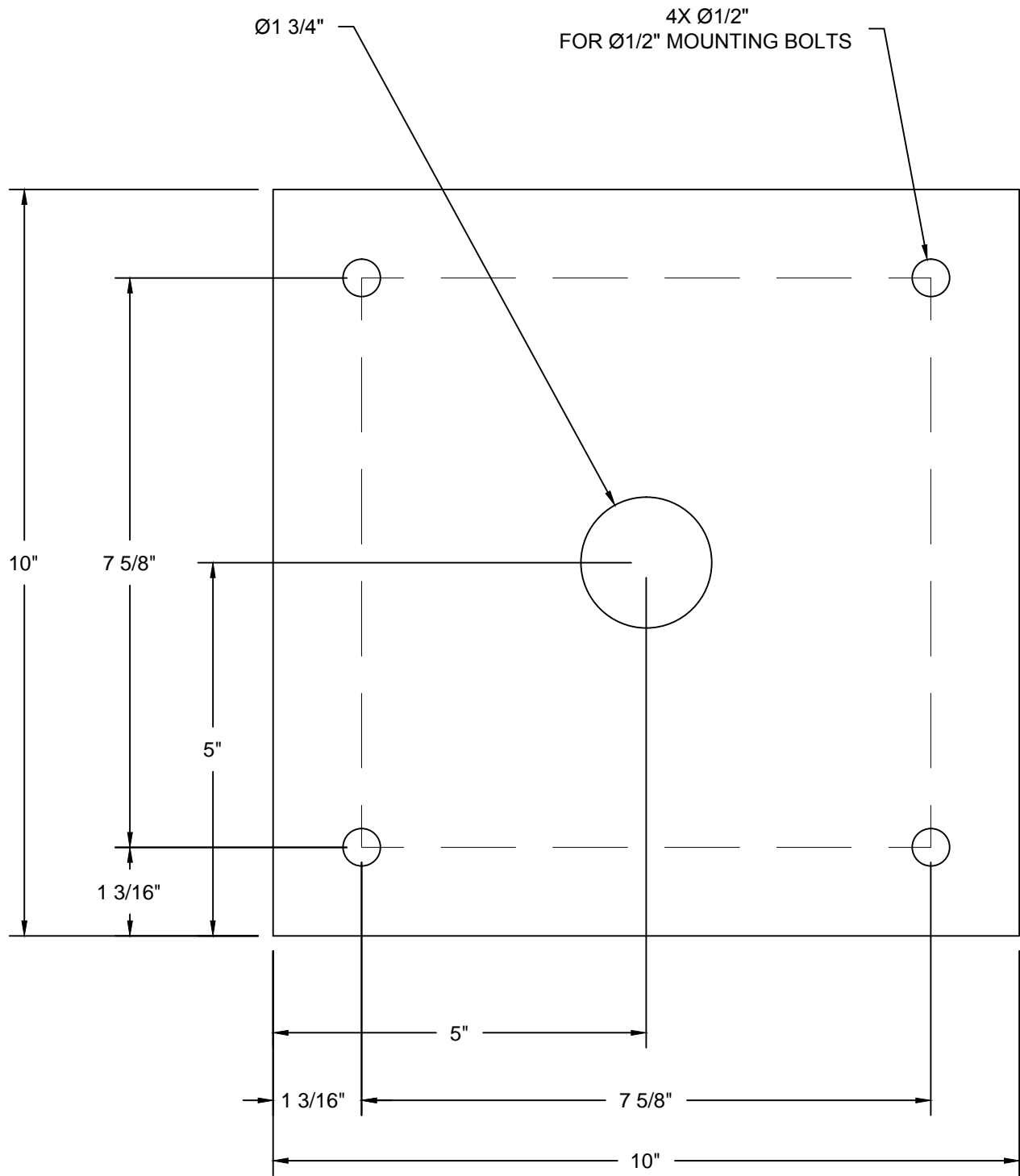
05-27-99A

SECTION

C100

19779

BASE MOUNTING TEMPLATE



VENCO VENTURO INDUSTRIES LLC
CINCINNATI, OHIO

TITLE
BASE MOUNTING

CE6K

DATE
04-12-19B

SUPERSEDES
07-22-99A

SECTION
C100

19767

SECTION 150

SAFETY



VENCO VENTURO INDUSTRIES LLC
CINCINNATI, OHIO

CRANE SAFETY AND HAZARDS

CA, CE, CT, AND DT CRANES

CAUTIONS

1. INSPECT VEHICLE AND CRANE, INCLUDING OPERATION, PRIOR TO USE DAILY.
2. DO NOT USE THIS EQUIPMENT EXCEPT ON SOLID, LEVEL SURFACE WITH CRANE MOUNTED ON FACTORY-RECOMMENDED TRUCK.
3. BEFORE OPERATING THE CRANE, REFER TO MAXIMUM LOAD (CAPACITY) CHART ON CRANE FOR OPERATING (LOAD) LIMITATIONS.
4. DO NOT OPERATE, WALK, OR STAND BENEATH BOOM OR A SUSPENDED LOAD.
5. FOR TRAVEL, BOOM MUST BE TIED DOWN IN THE STOWED POSITION.

DANGER

- THIS CRANE IS NOT A PASSENGER LIFT
- IT IS NOT DESIGNED OR INTENDED TO BE USED TO LIFT, SUPPORT, OR OTHERWISE TRANSPORT PERSONNEL.

YOU MUST NOT OPERATE THIS CRANE UNLESS

1. YOU HAVE BEEN TRAINED IN THE SAFE OPERATION OF THIS CRANE
AND
2. YOU KNOW AND FOLLOW THE SAFETY AND OPERATING RECOMMENDATIONS CONTAINED IN THE MANUFACTURER'S MANUALS, YOUR EMPLOYER'S WORK RULES, AND APPLICABLE GOVERNMENT REGULATIONS. AN UNTRAINED OPERATOR SUBJECTS HIMSELF AND OTHERS TO DEATH OR SERIOUS INJURY.



MFG., INC.
CINCINNATI, OHIO

TITLE

INSTALLATION DWG

DATE

3-2-99C

SECTION

C150

CA, CE, CT, AND DT

SUPERCEDES

10-17-97B

870701

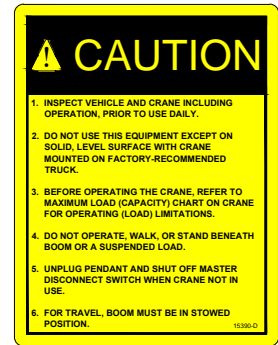
DECAL #: 15390

DESCRIPTION: CAUTION, INSPECT VEHICLE & CRANE...

PURPOSE: TO INFORM THE OPERATOR OF KEY OPERATING REQUIREMENTS.

QUANTITY: 1

PLACEMENT: REAR COVER OR SIDE OF CRANE



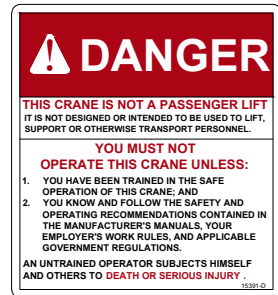
DECAL #: 15391

DESCRIPTION: DANGER, NOT A PASSENGER LIFT

PURPOSE: TO INFORM OPERATOR NOT TO LIFT, SUPPORT, OR TRANSPORT PERSONNEL, AND TO ENSURE OPERATOR IS ADEQUATELY TRAINED.

QUANTITY: 1

PLACEMENT: REAR COVER OR SIDE OF CRANE



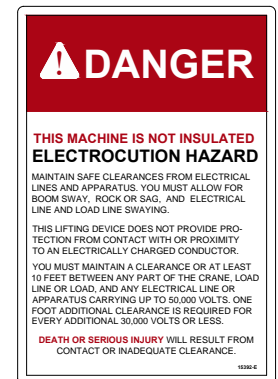
DECAL #: 15392

DESCRIPTION: DANGER, ELECTROCUTION HAZARD, MACHINE (CRANE)

PURPOSE: TO INFORM OPERATOR THAT MACHINE (CRANE) REPRESENTS AN ELECTROCUTION HAZARD SHOULD IT COME CLOSE TO OR IN CONTACT WITH AN ELECTRICAL VOLTAGE SOURCE.

QUANTITY: 1

PLACEMENT: REAR COVER OR SIDE OF CRANE



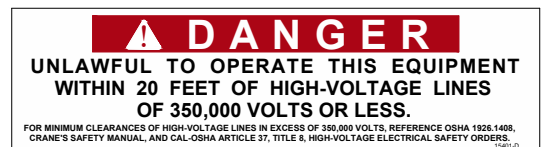
DECAL #: 15401

DESCRIPTION: DANGER, UNLAWFUL TO OPERATE

PURPOSE: TO INFORM OPERATOR OF PROPER OPERATION IN VICINITY OF ELECTRICAL LINES.

QUANTITY: 1

PLACEMENT: RING COVER OR SIDE OF CRANE



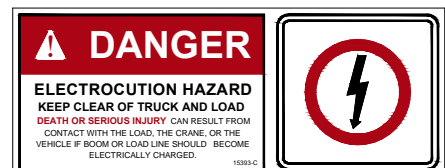
DECAL #: 15393

DESCRIPTION: DANGER, ELECTROCUTION HAZARD, VEHICLE (TRUCK)

PURPOSE: WARNS OF DANGER FROM ELECTRICALLY CHARGED VEHICLE, CRANE, OR LOAD.

QUANTITY: 4

PLACEMENT: EACH SIDE & EACH END OF VEHICLE



VENCO VENTURO INDUSTRIES LLC
CINCINNATI, OHIO

TITLE

SAFETY DECALS

VENTURO CRANES

DATE

04-29-16E

SUPERSEDES

10-24-13D

SECTION

C150

21353

PART NO.: 15513

DECAL: MASTER DISCONNECT SWITCH

FUNCTION: To inform the operator of location and operation of master disconnect switch.

QUANTITY: 1

PLACEMENT: On master disconnect switch bracket.



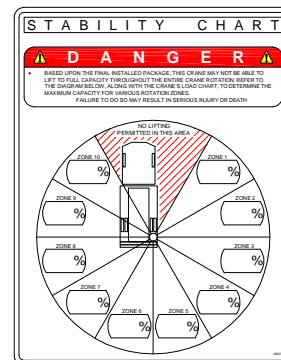
PART NO.: 20927

DECAL: CRANE STABILITY

FUNCTION: To inform the operator of the crane's lifting capacity throughout the entire rotation.

QUANTITY: 1

PLACEMENT: In prominent location, so it is easily seen and readily identifiable.



VENCO VENTURO INDUSTRIES LLC
CINCINNATI, OHIO

TITLE
SAFETY DECALS

CRANES

DATE
06-06-14C

SUPERSEDES
04-02-13B

SECTION
C150

21384

DECAL #: 19625
DESCRIPTION: BOOM ANGLE
PURPOSE: To show the operator the boom angle.
QUANTITY: 2
PLACEMENT: One on each side of housing.



DECAL #: 19689-2
DESCRIPTION: CAPACITIES
PURPOSE: To show the operator the correct capacities at boom angle.
QUANTITY: 2
PLACEMENT: One on each side of mast.

CAPACITIES (AC)			
BOOM ANGLE			
	20°	40°	60°
3	1600	1800	1600
4	1500	1800	1600
5	1200	1450	1600
6	1000	1280	1600
7	850	1080	1500

DECAL #: 13191-7
DESCRIPTION: USE SNATCH BLOCK
PURPOSE: To inform the operator when to use a snatch block.
QUANTITY: 2
PLACEMENT: One on each side of boom.



DECAL #: 19738
DESCRIPTION: MODEL NUMBER
PURPOSE: To show the model of the crane.
QUANTITY: 2
PLACEMENT: One on each side of boom.



VENCO VENTURO INDUSTRIES LLC
CINCINNATI, OHIO

TITLE
MODEL & CAPACITY DECALS

CE6K

DATE
03-04-19A

SUPERSEDES
09-09-05

SECTION
C150

21370

DECAL #: 13191-10
DESCRIPTION: USE SNATCH BLOCK
PURPOSE: To inform the operator when to use a snatch block.
QUANTITY: 2
PLACEMENT: One on each side of boom.



DECAL #: 15398
DESCRIPTION: UNPLUG REMOTE CONTROL
PURPOSE: To inform the operator to unplug remote control when not in use.
QUANTITY: 1
PLACEMENT: Near pendant socket.



DECAL #: 11917-4
DESCRIPTION: NEGATIVE GROUND
PURPOSE: To inform the operator that the crane has a negative ground.
QUANTITY: 1
PLACEMENT: Base end of boom near socket.



VENCO VENTURO INDUSTRIES LLC
CINCINNATI, OHIO

TITLE
MISC. DECALS

CE6K - DC

DATE
03-04-19A

SUPERSEDES
09-15-05

SECTION
C150

21371

SECTION 200

INSTALLATION



VENCO VENTURO INDUSTRIES LLC
CINCINNATI, OHIO

OPERATING INSTRUCTIONS

CA, CE, CT, & DT CRANES

ELECTRIC WINCH

The winch is operated by a control switch in a plug-in remote pendant. Unplug the pendant and store it in the vehicle when the crane is not in use.

TELESCOPING BOOM

On CE6K, CT & DT Cranes the boom can be manually extended. The hole in the extension section of the boom should be aligned with the slot in the stationary section at the position desired and the toggle pin inserted. The crane lifting capacity is shown at each toggle pin position on the CT & DT cranes. The CE6K has a decal on the mast which shows the capacities of the crane at its various angles and extensions.

SWIVEL SNATCH BLOCK

On CA2000, CT200X, and DT Cranes, the swivel snatch block must be used for loads over 1200 lbs. On the CE6K, the swivel snatch block must be used on loads over 1000 lbs. It may also be used for lower loads to reduce lifting speed for better control and to prevent loads from spinning. CA1000 & CT100X Cranes have a permanently rigged swivel block.

SWIVEL LOCK

On the CT & DT Cranes the hand lever operated swivel lock controls the 360° rotation of the crane and provides positive locking in 8 positions.

BANDBRAKE

The CE6K is equipped with a band brake that provides unlimited rotational positioning.

BOOM TIE DOWN

The load line should be used to tie down the boom to the socket or truck bed while the crane is not in use.

OPTIONAL MASTER DISCONNECT SWITCH

This switch should be turned "OFF" when the crane is not in use to disconnect the crane from the battery.

MAINTENANCE

The crane should be lubricated when the vehicle is serviced.

WINCH GEAR BOX (CT & DT cranes only) ▲

Check the oil level by removing the plug in the side of the gear box. If the oil level is below the plug opening, fill with SAE 85W-140 Hypoid gear oil.

WINCH DRIVE CHAIN (CT & DT cranes only) ▲

Oil lightly. **DO NOT GREASE.** Excess oil or grease will collect dirt and cause excessive chain wear. Inspect the chain and sprockets for excessive wear and proper alignment. Replace if excessively worn.

CRANE SOCKET SWIVEL BEARINGS

The crane should be removed from the socket once a year or more often if excessive dirt is present. Dirt should be cleaned out from around the lower bearing. Use a rag or brush to apply a light weight oil several times to the lower and upper bearings which are both oilite bronze except for the CE, CT200X & DT Cranes upper bearing which does not require lubrication.



MFG., INC.
CINCINNATI, OHIO

TITLE
INSTALLATION DWG

CA, CE, CT, & DT

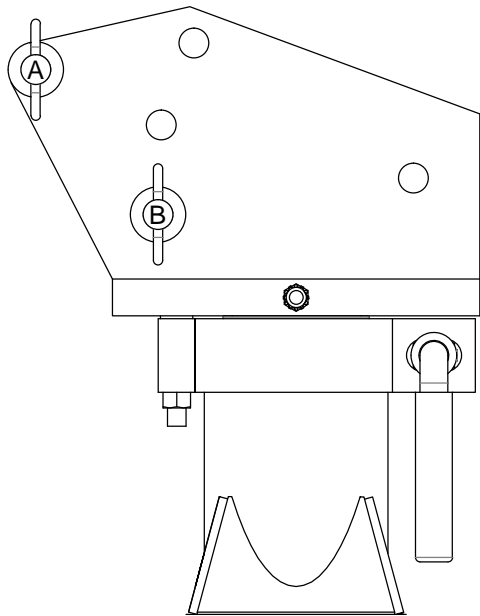
DATE
8-01-01C

SUPERCEDES
3-3-99B

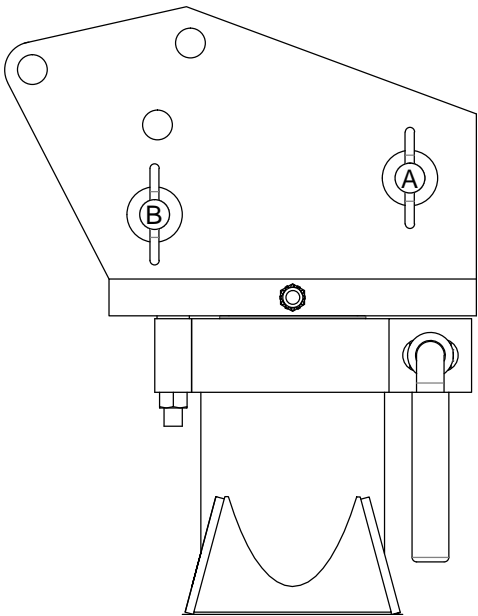
SECTION
C200

870702

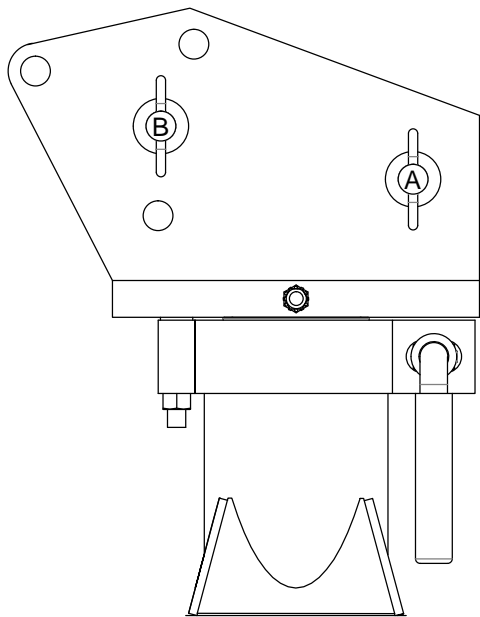
PIN POSITIONS FOR BOOM ANGLES



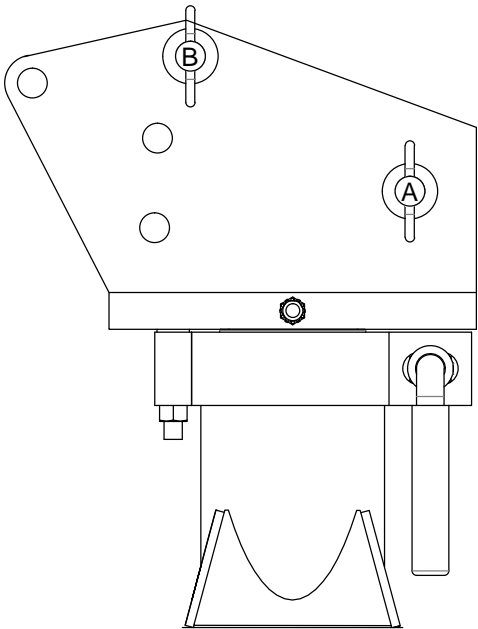
FOLDED POSITION



20° ANGLE



40° ANGLE



60° ANGLE



VENCO VENTURO INDUSTRIES LLC
CINCINNATI, OHIO

TITLE
PIN POSITIONS

CE6K

DATE
04-12-19A

SUPERSEDES
03-03-99

SECTION
C200

19774

!! IMPORTANT !!

ADEQUATE WIRING IMPERATIVE FOR PROPER OPERATION

1. PROPER GROUND PATH - SEE DWG 15660
2. CURRENT DRAW IS SEVERAL HUNDRED AMPERES - ADEQUATE WIRE SIZE AND BATTERY CAPACITY IS ABSOLUTELY ESSENTIAL (SEE CHART BELOW).

▲ MINIMUM WIRE GAUGE AND AUXILIARY BATTERY SIZE

▲ MINIMUM WIRE GAUGE AND AUXILIARY BATTERY SIZE										
MODEL	TOTAL LENGTH OF CABLE (FT) *								▲ 12 VOLT AUXILIARY BATTERY REQUIREMENTS	
	0-20	21-25	26-30	31-40	41-50	51-60	61-70	71-80	CCA (A) **	RC (MIN) ***
▲ CE1500 CE6K CT2000 CT2003/4/5 DT7K	#4	#4	#2	#2	#1	#0	#0	#00	350	100
ET5500MPB ET5500R ET6KMPB ET6KR ET6K ET8K ET10K ET12K	#2	#2	#1	#0	#00	NOT RECOMMENDED			450	100
ET8KX ET10KX ET12KX ▲ ET12KXP	#2	#2	#1	#0	#00	NOT RECOMMENDED			550	150
ET18K(X) ET25K(X) ET30KX ET36KX	SEE DRAWING 15660 FOR CABLE AND BATTERY REQUIREMENTS									

* INCLUDES GROUND CABLE

** CCA = COLD CRANKING AMPS AT 0° (F).

*** RC = RESERVE CAPACITY IN MINUTES AT 25 AMPS AND 80° (F).
THE RC RATING IS A MEASURE OF THE PERIOD OF TIME THE BATTERY CAN SUPPLY A GIVEN CURRENT WITHOUT RECHARGING.



VENCO VENTURO INDUSTRIES LLC
CINCINNATI, OHIO

TITLE
CABLE & BATTERY

ELECTRIC CRANES

DATE
07-30-18X

SUPERSEDES
09-27-17W

SECTION
C200

711105

RECOMMENDED CIRCUIT BREAKER TABLE

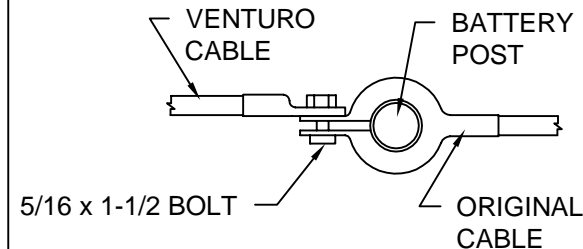
CRANE	DESCRIPTION	PART NO.
CT310KX	250 AMP, MAN RESET	22946-250
DT7	250 AMP, MAN RESET	22946-250
CE-1500-FB	150 AMP, MAN RESET	22946-150
CE6K	150 AMP, MAN RESET	22946-150
CT200X	250 AMP, MAN RESET	22946-250
ET6K	250 AMP, MAN RESET	22946-250
ET8/12K(X)	250 AMP, MAN RESET	22946-250
ET12KXP	300 AMP, MAN RESET	22946-300
ET16/18KX-16'	250 AMP, MAN RESET	22946-250
ET16/18KX-20'	300 AMP, MAN RESET	22946-300
ET25/30KX	300 AMP, AUTO RESET	22946-300
ET36KX	300 AMP, AUTO RESET	22946-300

BATTERY REQUIREMENTS

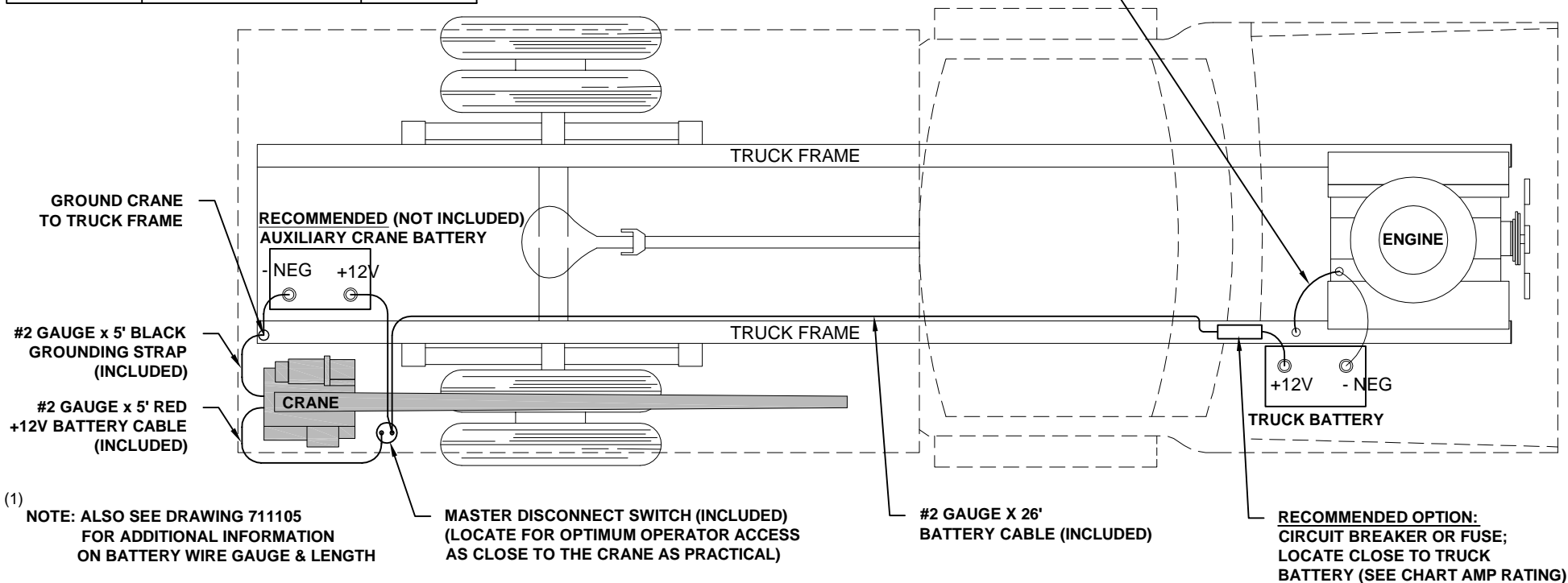
- 12 VOLT VEHICLE BATTERY REQUIREMENTS
 - 625 COLD CRANKING AMPS (AT 0° F)
 - 160 MINUTES RESERVE CAPACITY
 - 102 PLATES, 105 AMP-HR
- (1) • 12 VOLT AUXILIARY BATTERY REQUIREMENTS
 - SEE MINIMUM WIRE GAUGE AND BATTERY SIZE

NOTE: OPERATING WITH THE VEHICLE BATTERY 'ONLY' IS PERMISSIBLE, BUT NOT RECOMMENDED.

RECOMMENDED BATTERY TERMINAL ATTACHMENT



INSTALL #2 GAUGE GROUND STRAP FROM ENGINE TO TRUCK FRAME (REQUIRED IF NEGATIVE FROM BATTERY IS CONNECTED TO ENGINE)



VENCO VENTURO INDUSTRIES LLC
CINCINNATI, OHIO

TITLE

BATTERY CABLE & COMPONENT INSTALL

ET CRANES

DATE

09-03-20M

SUPERSEDES

07-30-18L

SECTION

C200

15660

WIRE ROPE INSTALLATION

1. Unwind coil of rope by rolling it along floor. This will prevent kinking.
2. Both the DC and AC versions of the CE6K use winches with two set screws in the winch drum to secure the wire rope (see illustration A). The DCHD (heavy duty) version of the CE6K uses a wedge in the winch drum to secure the wire rope (see illustration B).
3. THERE MUST ALWAYS BE AT LEAST (3) LAYERS OF WIRE ROPE ON THE DRUM WHEN UNDER LOAD.

STANDARD DUTY WINCH

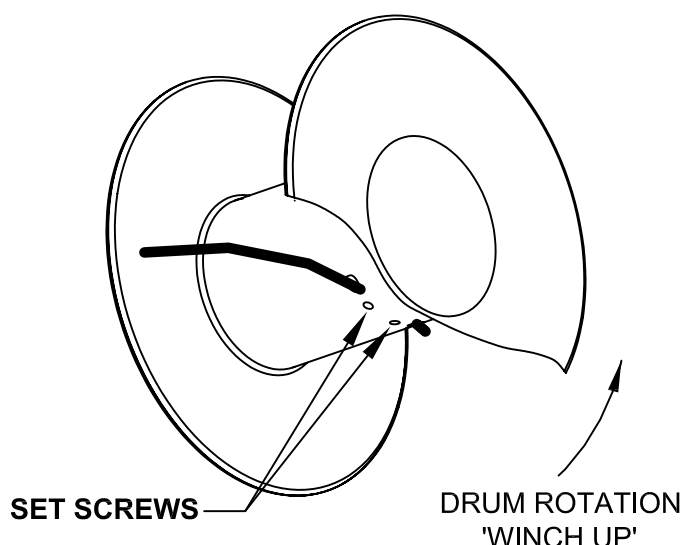


ILLUSTRATION A

HEAVY DUTY WINCH

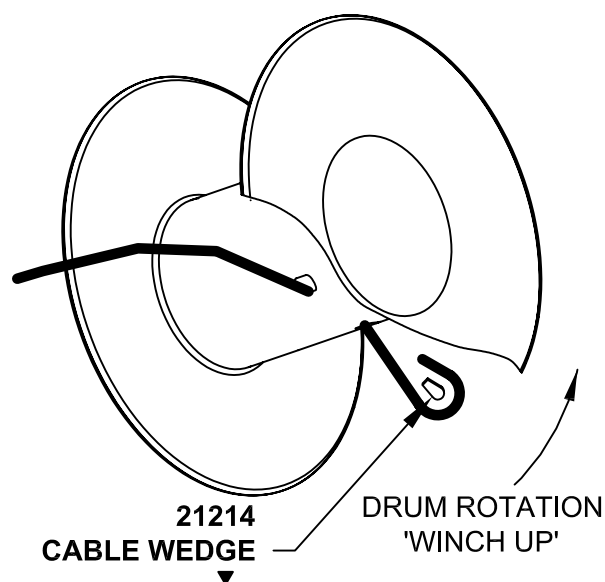


ILLUSTRATION B



MFG., INC.
CINCINNATI, OHIO

TITLE

WIRE ROPE INSTALLATION

CE6K

DATE

08-26-08B

SUPERSEDES

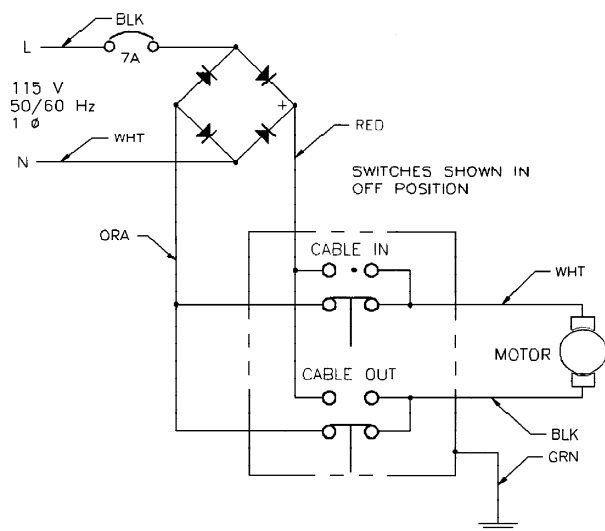
11-30-05A

SECTION

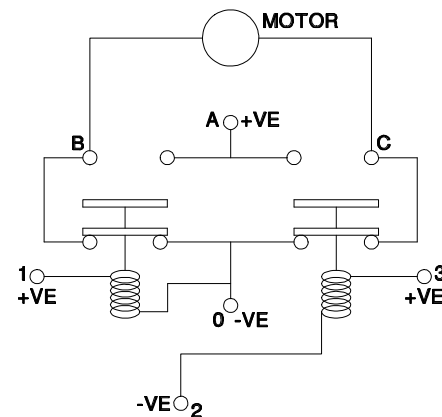
-

20970

AC WINCH ELECTRICAL SCHEMATIC

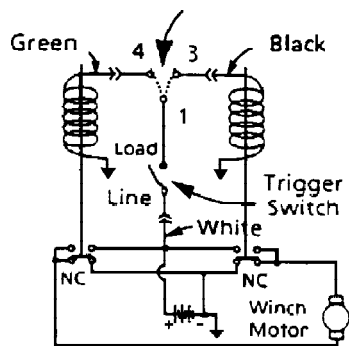


HEAVY DUTY WINCH ELECTRICAL SCHEMATIC

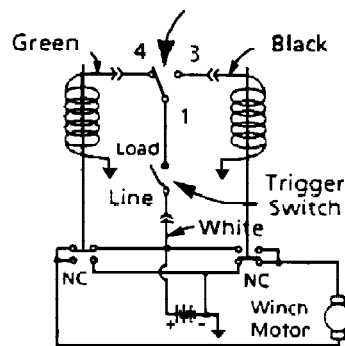


DC WINCH ELECTRICAL SCHEMATIC

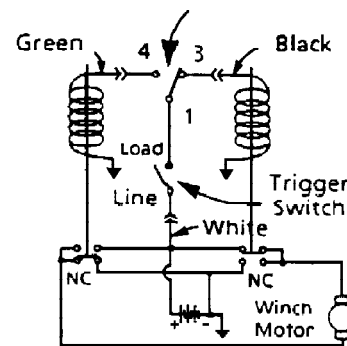
REVERSAL SWITCH
(SWITCH MAY BE IN
EITHER POSITION)



REVERSAL SWITCH
(CABLE-IN POSITION)



REVERSAL SWITCH
(CABLE-OUT POSITION)



MANUFACTURING, INC.
CINCINNATI, OHIO

TITLE
WIRING DIAGRAMS

WINCH PU (AC ,DC & HEAVY DUTY)

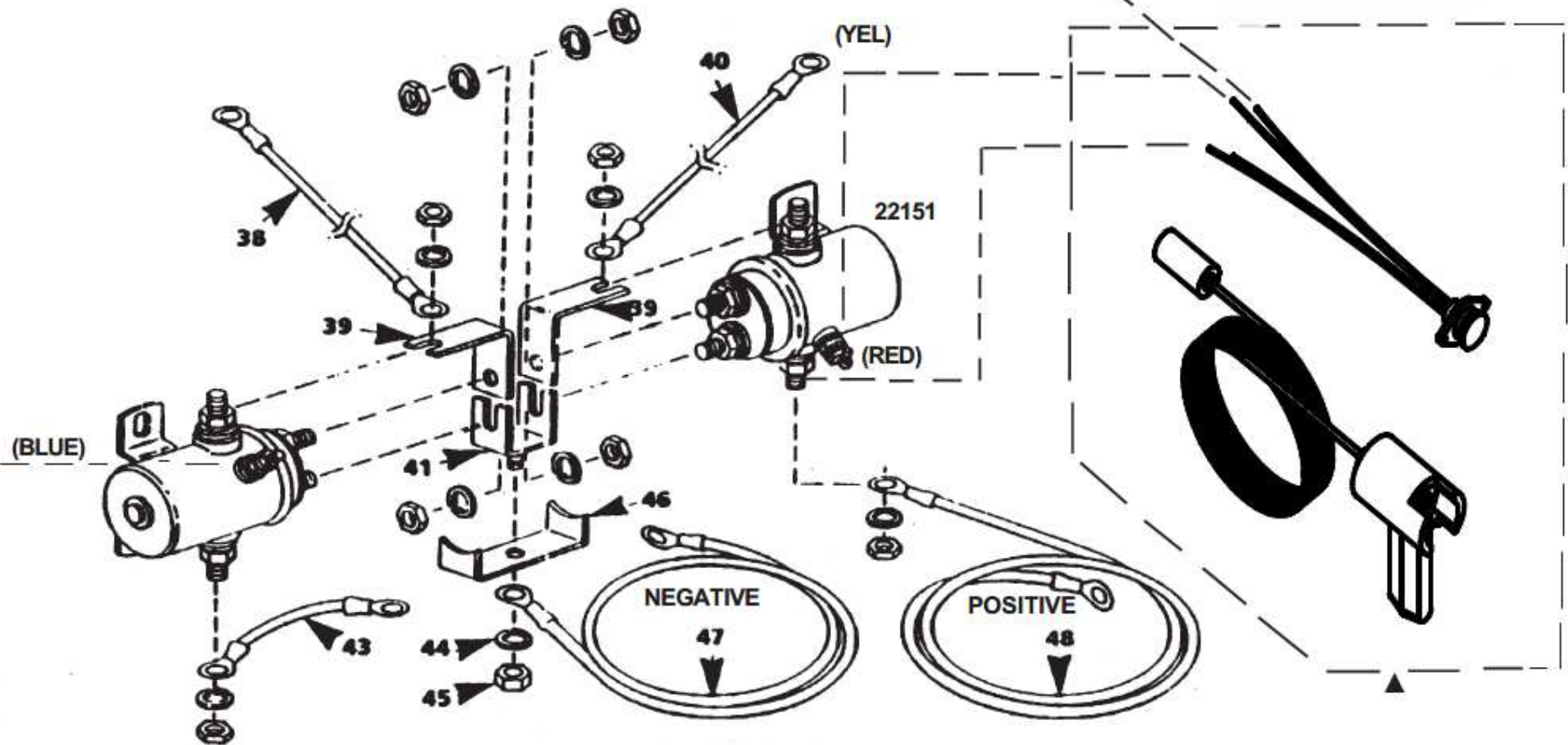
DATE
4-28-99A

SUPERCEDES
3-9-99

SECTION
C200

19775

PENDANT & SOCKET SOLD AS
KIT ONLY: P/N 20806



VENCO VENTURO INDUSTRIES LLC
CINCINNATI, OHIO

TITLE
PARTS BREAKDOWN - C1000
SUPERWINCH

DATE
07-20-22D
SUPERSEDES
07-11-19C

SECTION
C400
22648

19665 WINCH (12 VDC)

ELECTRICAL COMPONENTS

ITEM NO.	PART NO.	DESCRIPTION
1	-	-
2	-	-
3	-	-
4	-	-
5	-	-
6	-	-
7	-	-
8	-	-
9	-	-
10	-	-
11	-	-
12	-	-
13	-	-
14	-	-
15	-	-
16	-	-
17	-	-
18	-	-
19	-	-
20	-	-
21	-	-
22	-	-
23	-	-
24	-	-
38	-	#4GAGE BLK BATT CABLE 6" (MOTOR)
39	-	"L" BUSS BRACKET
40	-	#4GAGE BLK BATT CABLE 7" (MOTOR)
41	-	COUPLING BUSS BRACKET
43	-	#4GAGE BLK BATT CABLE 4" (CONTACTOR)
46	-	GROUNDING BRACKET
47	-	#4GAGE BATT CABLE 29" (NEGATIVE)
48	010025-4*25	#4GAGE RED BATT CABLE 25' (POSITIVE)
NONE ISSUED	22151	CONTACTOR
NONE ISSUED	19633	PENDANT & SOCKET ASSY.

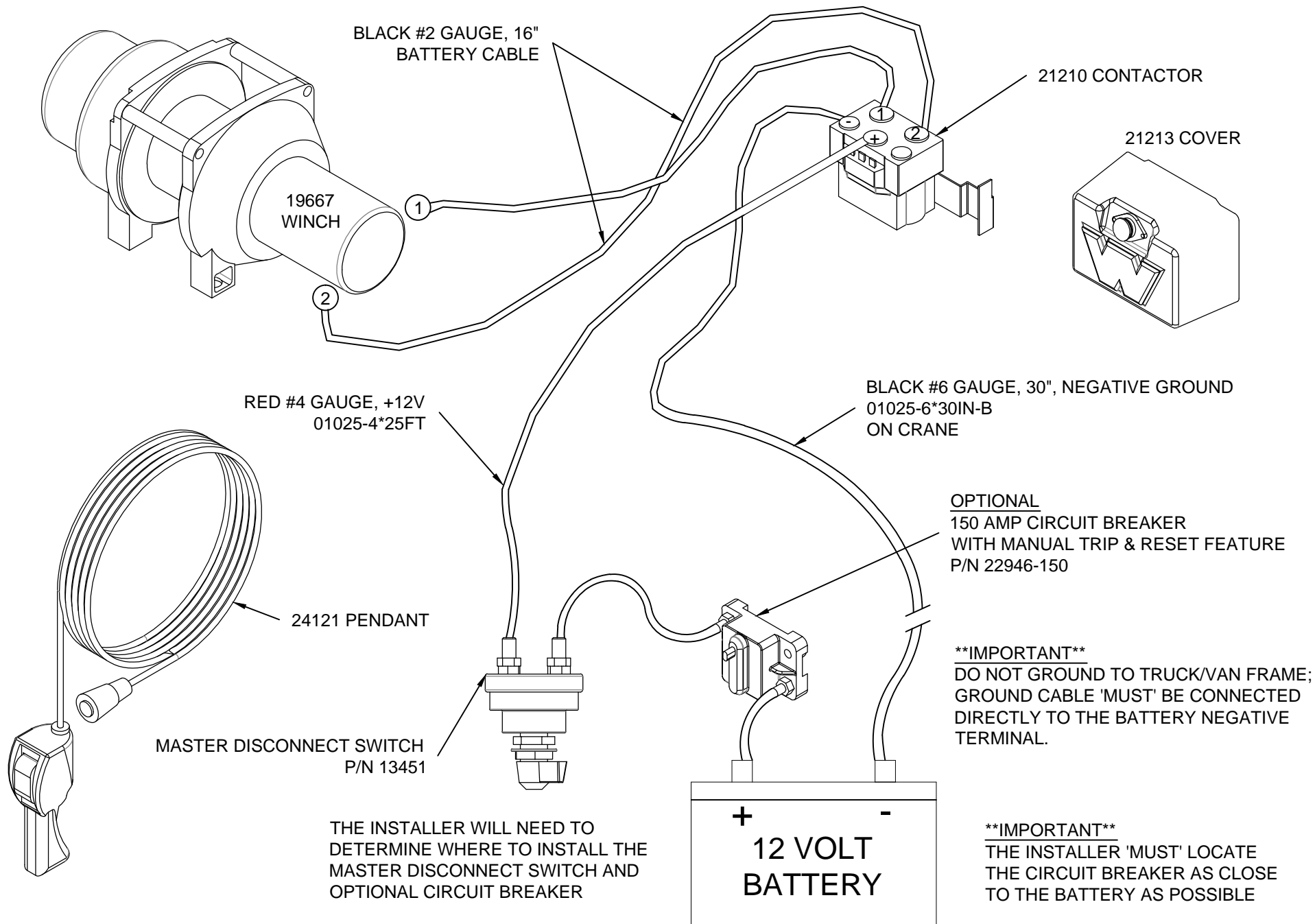


MFG., INC.
CINCINNATI, OHIO

TITLE
PARTS BREAKDOWN C-1000
SUPERWINCH

DATE
2-26-08
SUPERSEDES
-

SECTION
-
22856



VENCO VENTURO INDUSTRIES LLC
CINCINNATI, OHIO

TITLE
WIRING DIAGRAM

CE6K HEAVY DUTY

DATE
04-12-19

SUPERSEDES
-

SECTION
C200

24120

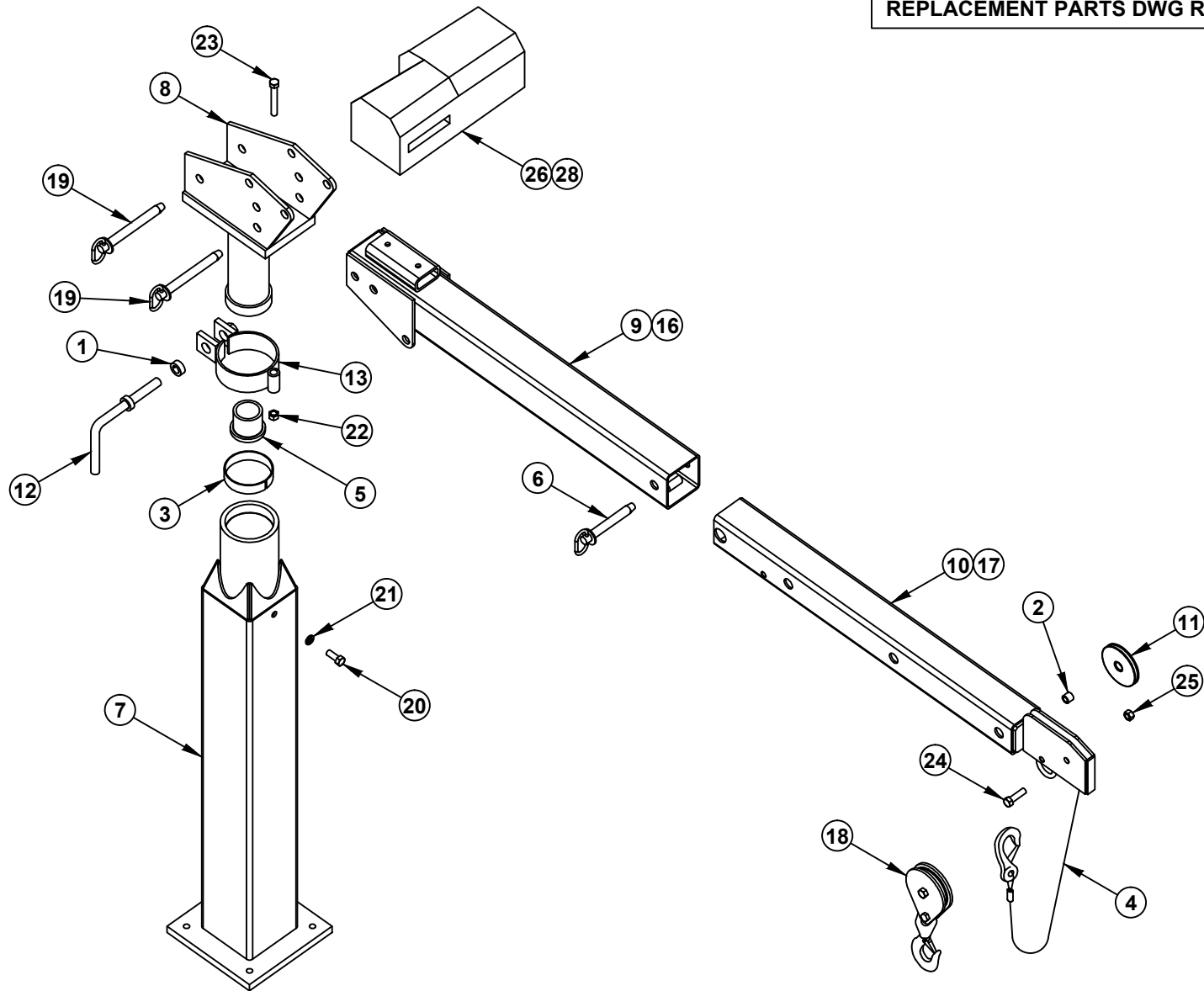
SECTION 400

REPLACEMENT PARTS



VENCO VENTURO INDUSTRIES LLC
CINCINNATI, OHIO

REPLACEMENT PARTS DWG REF 19777



VENCO VENTURO INDUSTRIES LLC
CINCINNATI, OHIO

TITLE
REPLACEMENT PARTS DRAWING
CE6K

DATE
02-04-19B
SUPERSEDES
05-03-99A

SECTION
C400
19776

19600 (CE6K FINAL ASSEMBLY)
REPLACEMENT PARTS LIST

ITEM	PART NUMBER	DESCRIPTION
1	00210	SHAFT COLLAR - 3/4"
2	13168-2	SLEEVE
3	20179	BEARING - 4" I.D. X 1"
4	15810-3/16-35	WIRE ROPE ASSEMBLY - 3/16" DIA X 35" LONG
5	18575	FLANGE BEARING - 2" I.D. X 2-1/2" O.D.
6	19258-5	BOOM PIN
7	18606	BASE WELDED ASSEMBLY
8	19617	HOUSING WELDED ASSEMBLY
9	19626	PRIMARY WELDED ASSEMBLY - 3-5 FT BOOM
10	19636	SECONDARY WELDED ASSEMBLY - 3-5 FT
11	19646	SHEAVE WITH BRONZE BUSHING
12	19652	BRAKE HANDLE
13	19653	BRAKE ASSEMBLY
14	-	-
15	-	-
16	19672	PRIMARY WELDED ASSEMBLY - 4-7 FT BOOM
17	1966	SECONDARY WELDED ASSEMBLY - 4-7 FT
18	19678	SWIVEL SNATCH BLOCK WITH SAFETY LATCH - 2200LB CAP
19	22234-3	TOGGLE PIN ASSEMBLY
20	!HHCS05013125	HEX HEAD CAP SCREW - 1/2"-13 X 1 -1/4"
21	!LWSH-050	LOCK WASHER - 1/2"
22	!LNUT-05013	LOCK NUT - 1/2"-13
23	!HHCS05013400	HEX HEAD CAP SCREW - 1/2"-13 X 4"
24	!HHCS06311175	HEX HEAD CAP SCREW - 5/8"-11 X 1-3/4"
25	!JNUT-06311N	NYLON LOCK-JAMNUT - 5/8"-11
26	19665	C1000 WINCH WITH SOLENOID AND 12' HAND HELD REMOTE
27	-	-
28	19667	DC1000 HEAVY DUTY WINCH - CE6K
29	-	-
30	-	-
*31	19603	FIELD SERVICE LABEL KIT - CE6K - DC
*32	19603-1	FIELD SERVICE LABEL KIT - CE6K - AC
*33	19633	C1000 WINCH PENDANT CONTROL (STANDARD DUTY)
*34	19634	DC1000 WINCH PENDANT CONTROL (HEAVY DUTY)
35	-	-

* = NOT SHOWN ON REPLACEMENT PARTS LIST



VENCO VENTURO INDUSTRIES LLC
CINCINNATI, OHIO

TITLE

REPLACEMENT PARTS LIST

DATE

02-04-19H

SECTION

C400

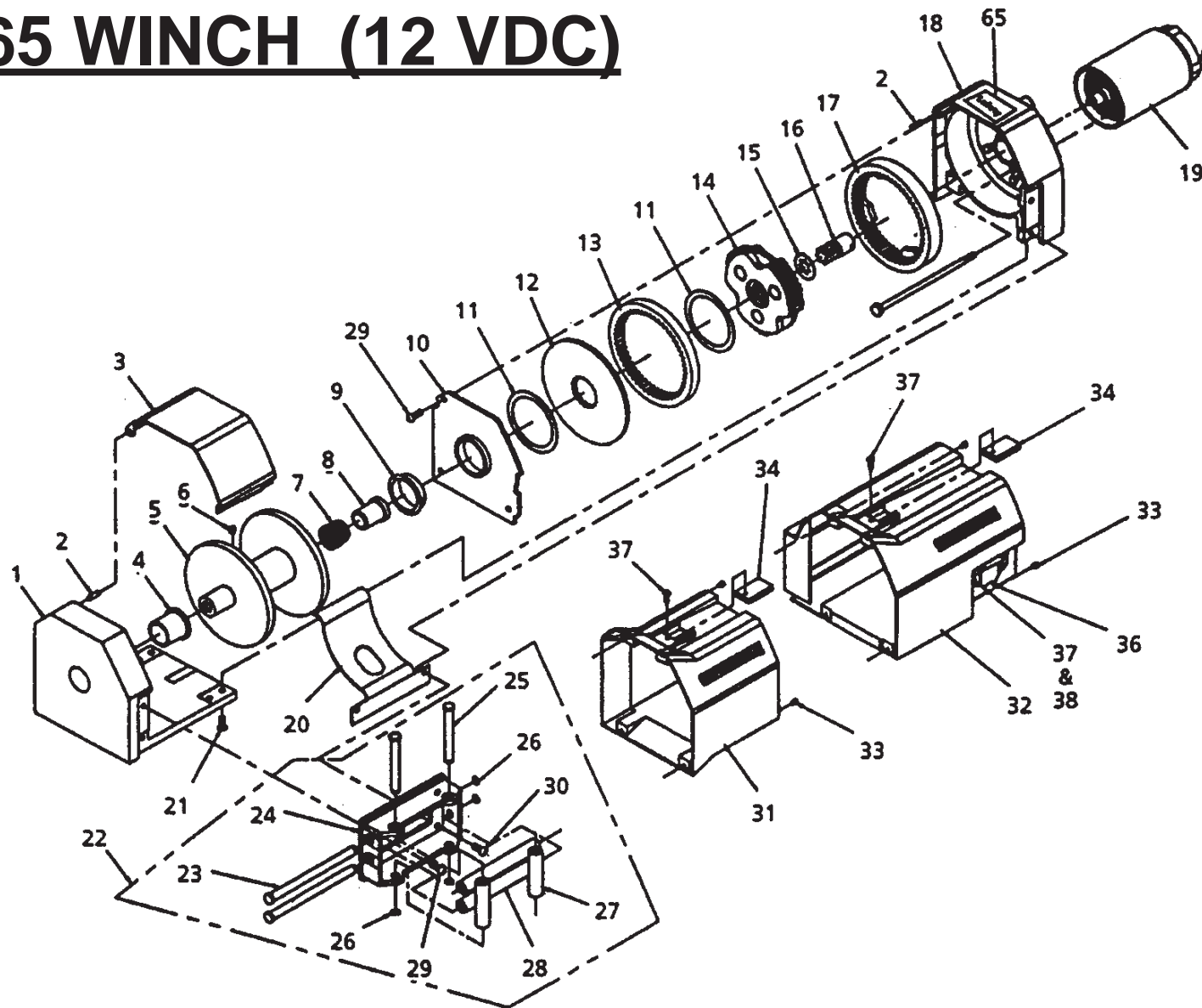
CE6K

SUPERSEDES

04-0705G

19777

19665 WINCH (12 VDC)



MANUFACTURING, INC.
CINCINNATI, OHIO

TITLE
SUPERWINCH PARTS DRAWING

DATE
4-4-05

SECTION
-

SUPERCEDES
-

20797

19665 WINCH (12 VDC)

ITEM NO.	PART NO.	DESCRIPTION
1	-	-
2	-	-
3	20798	CABLE GUARD
4	-	-
5	-	-
6	-	-
7	-	-
8	-	-
9	-	-
10	-	-
11	-	-
12	-	-
13	-	-
14	-	-
15	-	-
16	-	-
17	-	-
18	-	-
19	20795	12V MOTOR
20	-	-
21	-	-
22	-	-
23	-	-
24	-	-
25	-	-
26	-	-
27	-	-
28	-	-
29	-	-
30	-	-
31	-	-
32	19663	MOTOR COVER ASSEMBLY
33	20789	M4 x 0.7 x 6mm BOLT
34	-	-
35	22151	SOLENOID / CONTACTOR
36a	19633	PENDANT AND SOCKET ASSY.
36b	20619	PENDANT (ONLY) - 12' CORD
36c	20620	SOCKET (ONLY)



MANUFACTURING, INC.
CINCINNATI, OHIO

TITLE

SUPERWINCH PARTS LIST

DATE

09-05-12B

SECTION

-

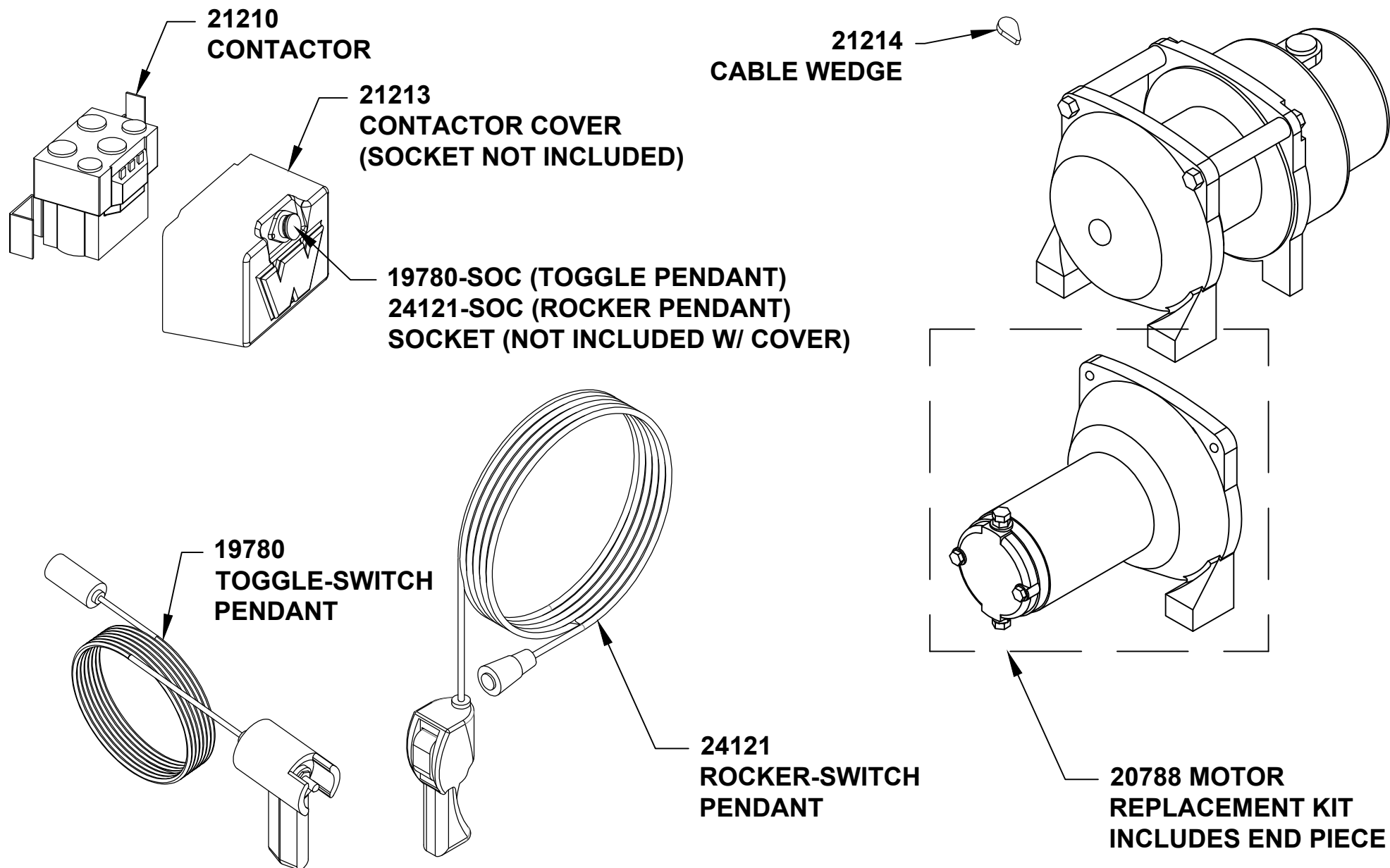
SUPERSEDES

04-18-05A

20796

-

19667 WINCH REPLACEMENT PARTS



MANUFACTURING, INC.
CINCINNATI, OHIO

TITLE

REPLACEMENT PARTS DRAWING

CE6K-HD

DATE

08-12-25G

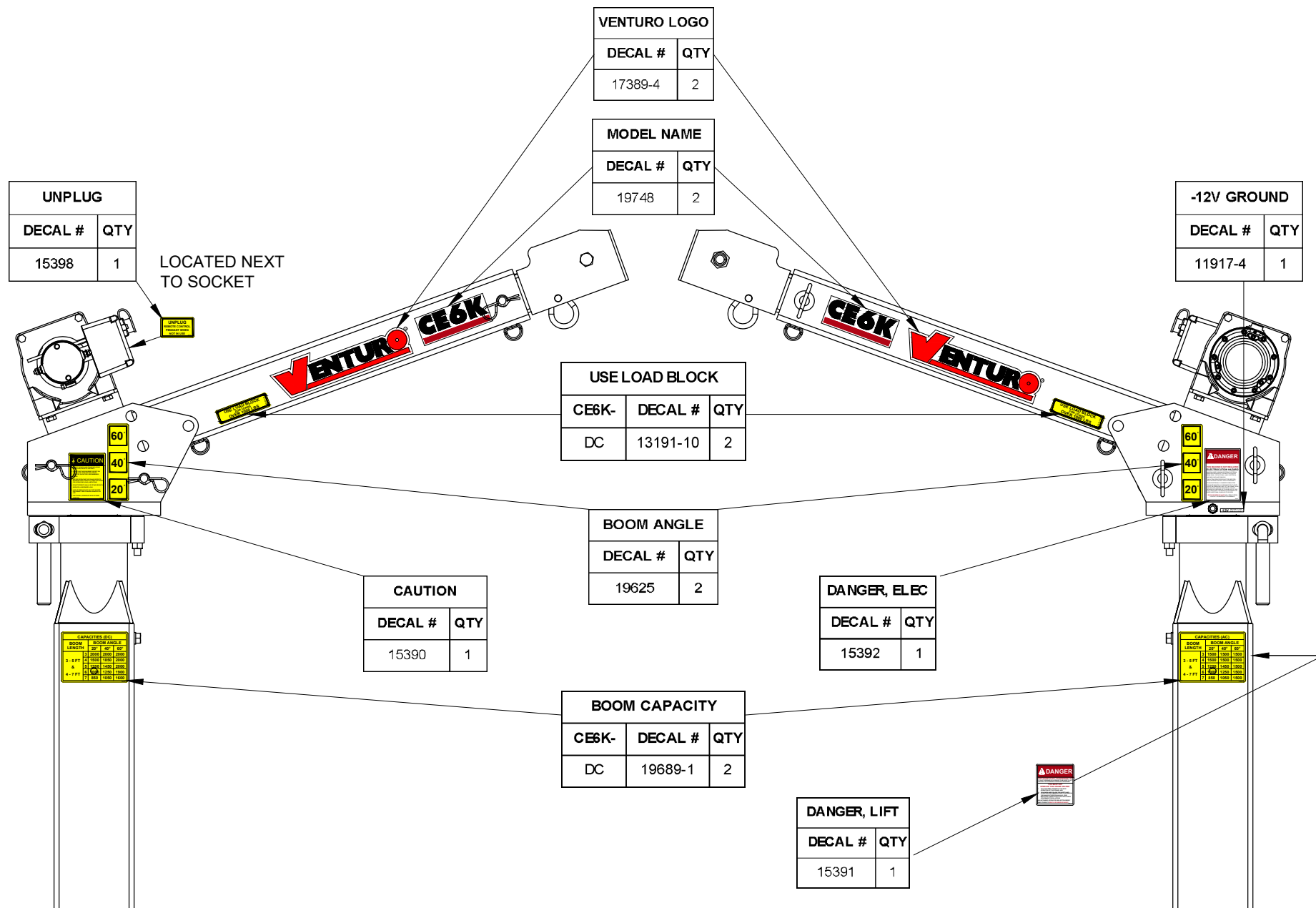
SUPERSEDES

12-15-06D

SECTION

-

20799



VENCO VENTURO INDUSTRIES LLC
CINCINNATI, OHIO

TITLE
DECAL PLACEMENT

CE6K

DATE
04-09-25J

SUPERSEDES
04-07-25H

SECTION
C400

19773

CE6K FIELD SERVICE LABEL KITS BILLS OF MATERIALS	19603	19603-1	19603= CE6K-DC 19603-1= CE6K-AC
DESCRIPTION	QTY		PART #
DECAL; VENTURO LOGO, SMALL	2	2	17389-4
DECAL; MODEL NAME, CE6K	2	2	19748
DECAL; BOOM CAPACITIES, CE6K-DC	2	-	19689-1
DECAL; BOOM CAPACITIES, CE6K-AC	-	2	19689-2
DECAL; BOOM ANGLES, CE6K	2	2	19625
DECAL; USE LOAD BLOCK, LOADS > 1000 LBS	2	-	13191-10
DECAL; USE LOAD BLOCK, LOADS > 750 LBS	-	2	13191-7
DECAL; VOLTAGE, 12V NEGATIVE GROUND	1	1	11917-4
KIT; ACCIDENT PREVENTION SIGNS	1	1	15397
IDWG; DECAL PLACEMENT, CE6K	1	1	19773
IDWG; FIELD SERVICE LABEL KIT, CE6K	1	1	28060
SAFETY MANUAL, VENTURO CRANES	1	1	INST-23233
SERIAL # RANGE 55125 - CURRENT			



VENCO VENTURO INDUSTRIES LLC
CINCINNATI, OHIO

TITLE
FIELD SERVICE LABEL KITS

CE6K

DATE
03-13-23B

SUPERSEDES
05-12-16A

SECTION
C400

28060



VENTURO CRANES LIMITED WARRANTY POLICY

Venturo products are built to last...we guarantee them.

As a purchaser of any new Venturo product covered by warranty, you will receive 1 year of the most complete coverage available...and, at no added cost to you.

1-Year Limited Warranty Policy

This limited policy warrants new products of Venturo to be free from defects in material and workmanship for a period of one (1) year from date of original installation. OEM products or accessories purchased by Venturo as part of or offered with our product will carry the OEM manufacturer's respective warranty. Our warranty covers:

- ***Repair or replacement of product***
- ***Labor to repair or replace product***
- ***Freight to return and/or replace product***

We shall not be liable for any contingent liabilities arising out of the improper function of any products. Warranty shall become void if the product is improperly installed, modified, damaged, abused or used for application other than intended use. There is no warranty of merchantability, fitness for a particular purpose, warranty arising from course of dealing or usage of trade, or any other implied or expressed warranty, except as made specifically herein. This warranty supersedes all previous warranties, written or implied.

Warranty Claims

Venco Venturo Industries LLC will make a good faith effort for prompt correction or other adjustment with respect to any product, which proves to be defective after our inspection and within the warranty period. Before any repairs are attempted or before returning any product, your Venturo Distributor is required to obtain a warranty claim number. This number is necessary for any claim to be considered. To obtain a warranty claim number, Venturo requires the model and serial number. Only authorized Venturo Distributors can perform warranty. For the name and address of your local Venturo Distributor call the **Warranty Claim Department - 513-772-8448**.

WARNING - It is the responsibility of the installer to ensure the installation is completed according to the manufacturer's recommendations, ensure the ultimate user understands how to operate product in a safe manner, and understands the need for regular service and maintenance by an authorized Venturo Distributor. No modifications or alterations may be made to any Venturo product without the expressed written consent of Venco Venturo Industries LLC. Installation of any Venturo product must be done by an authorized Venturo Distributor, to the standards of the industry; including maintenance, service and affixing of all instruction, safety and warning decals. Users should be instructed as to the safe operation at time of delivery. Maintenance, service, operation and safety warning decals are available on request from Venco Venturo Industries LLC.

VENCO VENTURO INDUSTRIES LLC
12110 BEST PLACE | CINCINNATI, OHIO 45241
P: 800-226-2238 | F: 513-326-5427
www.venturo.com