

PARTS & INSTALLATION MANUAL

OUTRIGGERS & ACCESSORIES

Included in this manual:

OUTRIGGERS, PEDESTALS, & BOOM RESTS

- For HT 40/45/50 Telescopic Service Cranes

VENCO VENTURO INDUSTRIES LLC
12110 BEST PLACE | CINCINNATI, OHIO 45241
800-226-2238



This manual also available online at www.venturo.com.

TABLE OF CONTENTS

HT40KX & HT50KX Accessories (Outriggers, Pedestals, Boom Rests)

SECTION 100 DESCRIPTION & SPECIFICATIONS

23982	24962/25100 OUTRIGGER APPLICATIONS CHART
23984	INSTALLATION DRAWING - 24971-FP FRONT OUTRIGGERS
25022	INSTALLATION DIMENSIONS - 25100-CD CRANKDOWN OUTRIGGERS
25023	INSTALLATION DIMENSIONS - 25100-PH/PHX HYDRAULIC OUTRIGGERS W/SHORT LEGS
25024	INSTALLATION DIMENSIONS - 25100-PH/PHX HYDRAULIC OUTRIGGERS W/LONG LEGS
25186	INSTALLATION DIMENSIONS - 25100-PH/PHX DUAL O.R. W/HYDRAULIC LONG LEGS

SECTION 200 INSTALLATION

17831	17830 PEDESTAL - MOUNTING DIMENSIONS AND INFORMATION
22913	RECOMMENDED SUPPLY & RETURN CRANE & OUTRIGGER HOSE CONNECTIONS
25177	INSTALL HYDRAULIC CONNECTIONS - 25100-PH 'DUAL'
25172	INSTALL HYDRAULIC CONNECTIONS - 25100-PHX 'DUAL'
20420	20381 ADJUSTABLE BOOM REST - ET/HT25 & HT40/50
22882	22668 PIN ASSEMBLY INSTALLATION - 25100-CD/PH
▲ 23047	INSTALLATION OF AXLE SUPPORTS FOR PH & CD LESS CROSS TUBE CONFIGURATIONS

SECTION 400 REPLACEMENT PARTS

23983	REPLACEMENT PARTS DRAWING & LIST - 24971-FP FRONT OUTRIGGERS
23962-2	23962-2 STUB OUTRIGGER
25034	25100-CD CRANKDOWN OUTRIGGERS
25174	REPLACEMENT PARTS DRAWING & LIST - 25100-CD 'DUAL 4'
25144	25100-PH HYDRAULIC OUTRIGGERS - LONG LEG
25179	REPLACEMENT PARTS DRAWING - 25100-PH 'DUAL 4' WITH HYDRAULIC LONG LEGS
25180	REPLACEMENT PARTS LIST - 25100-PH 'DUAL 4' WITH HYDRAULIC LONG LEGS
25143	25100-PH HYDRAULIC OUTRIGGERS - SHORT LEG
25175	REPLACEMENT PARTS DRAWING - 25100-PH 'DUAL 4' WITH HYDRAULIC SHORT LEGS
25176	REPLACEMENT PARTS LIST - 25100-PH 'DUAL 4' WITH HYDRAULIC SHORT LEGS
25146	25100-PHX REPLACEMENT PARTS DRAWING - HYDRAULIC LONG LEG
25162	25100-PHX REPLACEMENT PARTS LIST - HYDRAULIC LONG LEG
25184	REPLACEMENT PARTS DRAWING - 25100-PHX 'DUAL 4' WITH HYDRAULIC LONG LEGS
25185	REPLACEMENT PARTS LIST - 25100-PHX 'DUAL 4' WITH HYDRAULIC LONG LEGS
25145	25100-PHX REPLACEMENT PARTS DRAWING - HYDRAULIC SHORT LEG
25161	25100-PHX REPLACEMENT PARTS LIST - HYDRAULIC SHORT LEG
25170	REPLACEMENT PARTS DRAWING - 25100-PHX 'DUAL 4' WITH HYDRAULIC SHORT LEGS
25171	REPLACEMENT PARTS LIST - 25100-PHX 'DUAL 4' WITH HYDRAULIC SHORT LEGS



MFG., INC.
CINCINNATI, OHIO

TITLE
TABLE OF CONTENTS

HT40/50 Accessories

DATE
3-5-13F

SUPERCEDES
4-27-11E

SECTION
-

21024

SECTION 100

DESCRIPTION

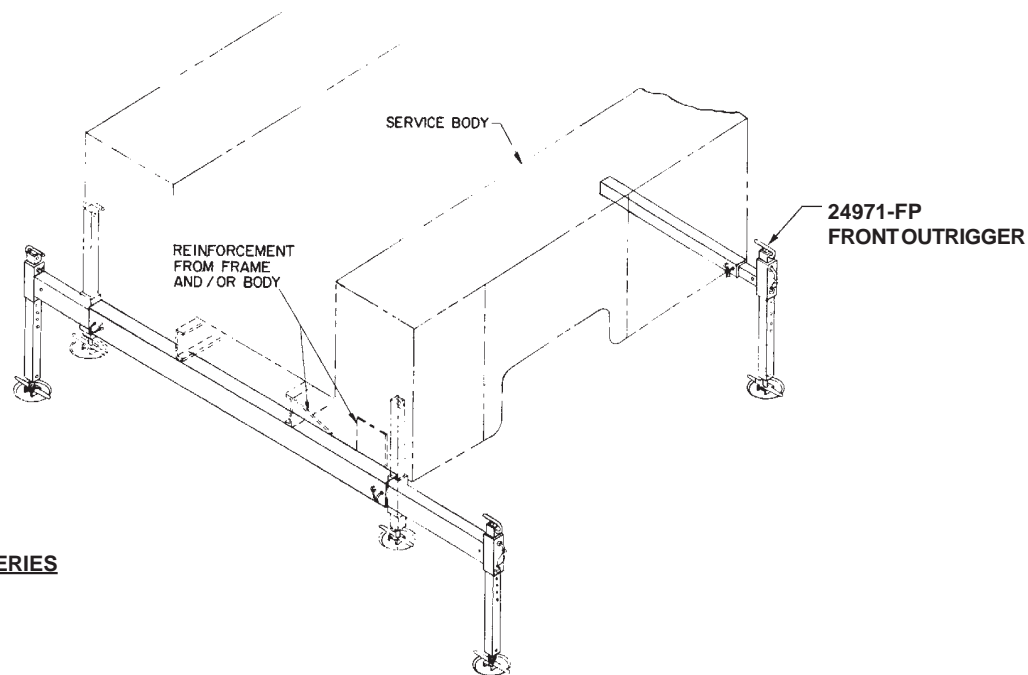
&

SPECIFICATIONS



VENCO VENTURO INDUSTRIES LLC
CINCINNATI, OHIO

WARNING: THESE PRODUCTS ARE NOT FOR
USE WITH PASSENGER LIFTS. THEY ARE NOT
DESIGNED OR INTENDED TO BE USED WITH
DEVICES THAT LIFT, SUPPORT, OR
OTHERWISE TRANSPORT PERSONNEL.



▲ **24962/25100 OUTRIGGER SERIES**
24962-P SHOWN

OUTRIGGER	IN/OUT	UP/DOWN	DUTY	USED ON
24962-P	MANUAL	MANUAL	STANDARD	ET/HT25K(X)
24962-CD	MANUAL	CRANK DOWN	STANDARD	ET/HT25K(X)
24962-PH	MANUAL	HYDRAULIC	STANDARD	HT25KX
24962-PHE	MANUAL	HYDRAULIC	STANDARD	ET/HT25K(X)
▲ 25100-CD	MANUAL	CRANK DOWN	HEAVY	HT40/50K(X)
▲ 25100-PH	MANUAL	HYDRAULIC	HEAVY	HT40/50K(X)
▲ 25100-PHX	HYDRAULIC	HYDRAULIC	HEAVY	HT25KX, HT40/50K(X)



MANUFACTURING, INC.
CINCINNATI, OHIO

TITLE
INSTALLATION DRAWING

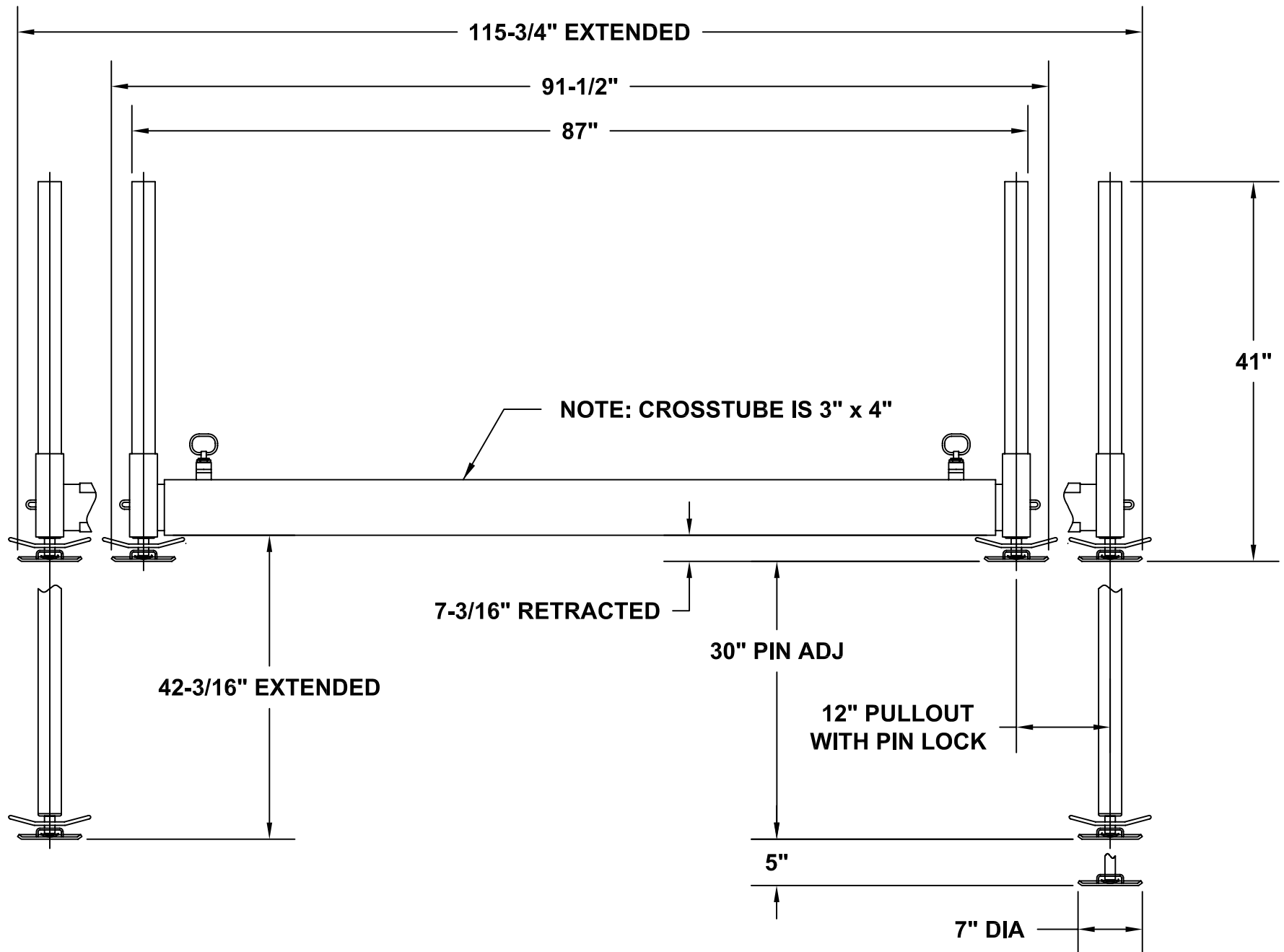
ET25K(X), HT25K(X), HT40/50KX

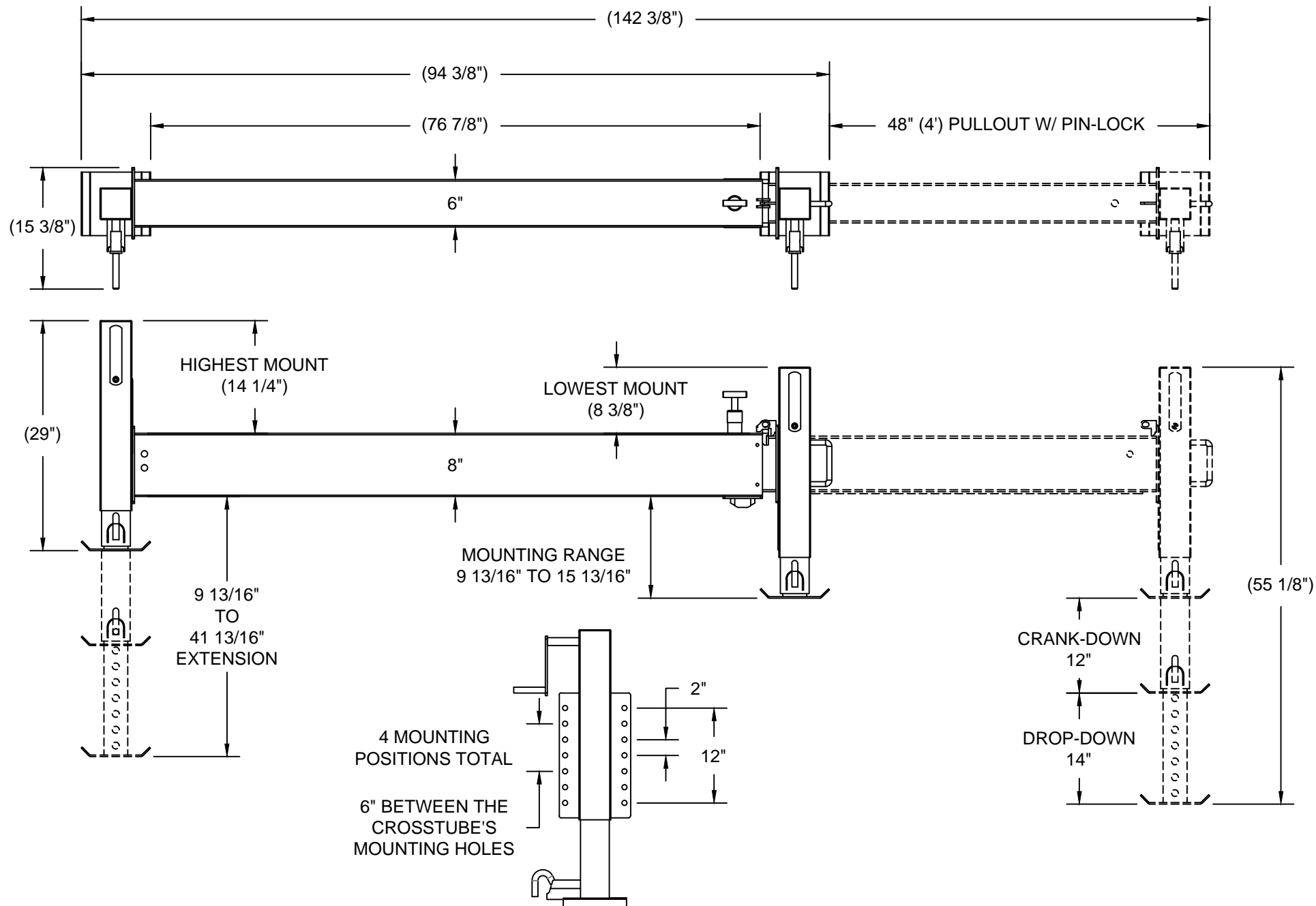
DATE
8-30-07C

SUPERCEDES
5-26-04B

SECTION
C120

23982





VENCO VENTURO INDUSTRIES LLC
CINCINNATI, OHIO

TITLE

INSTALLATION DETAILS

25100-CD(CRANK-DOWN) OUTRIGGER

DATE

09-08-15A

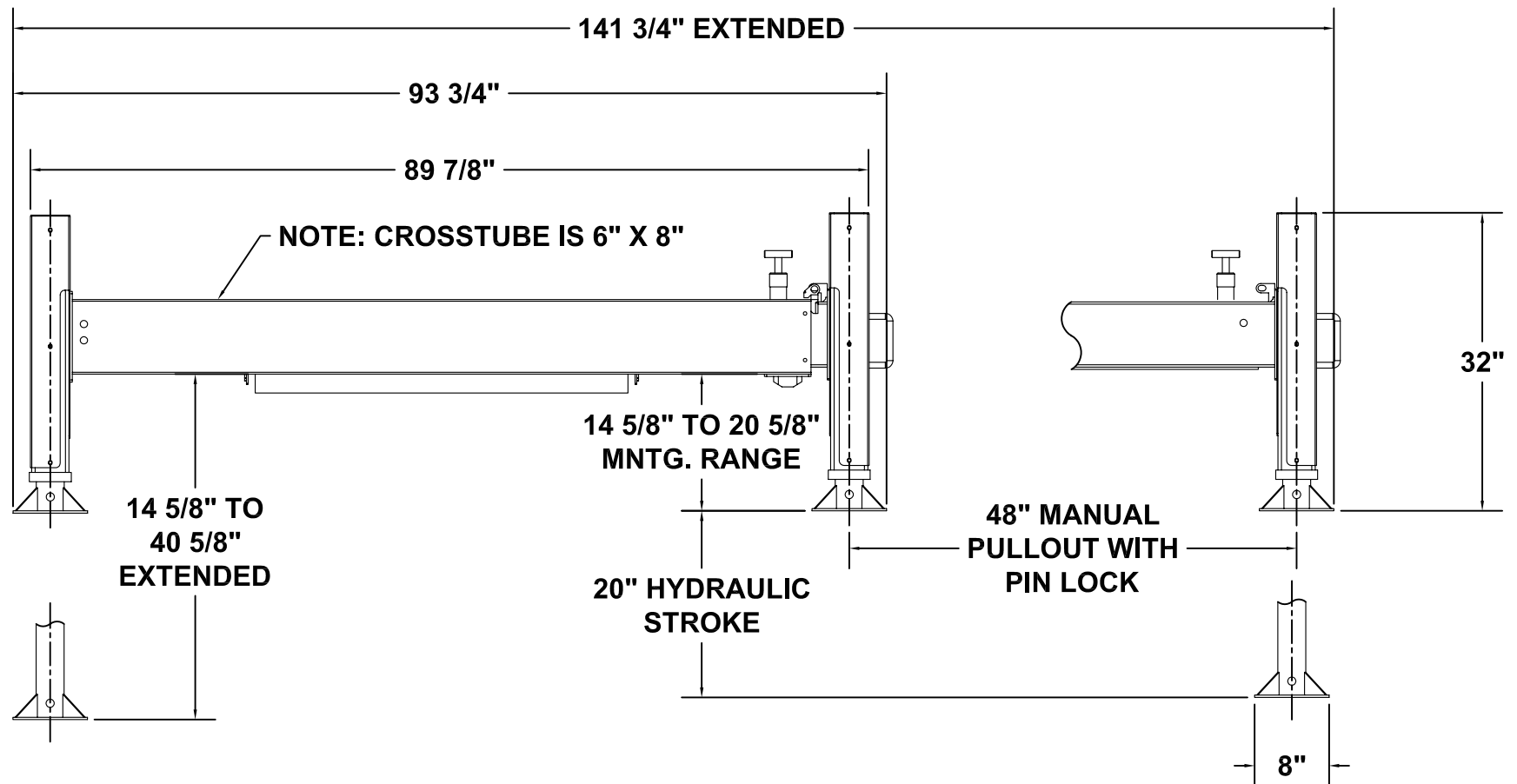
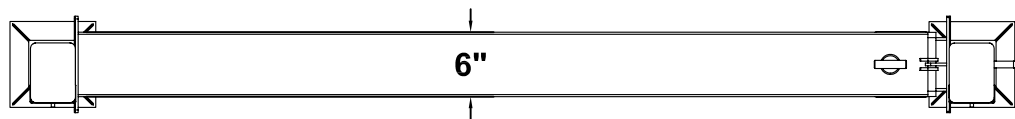
SUPERSEDES

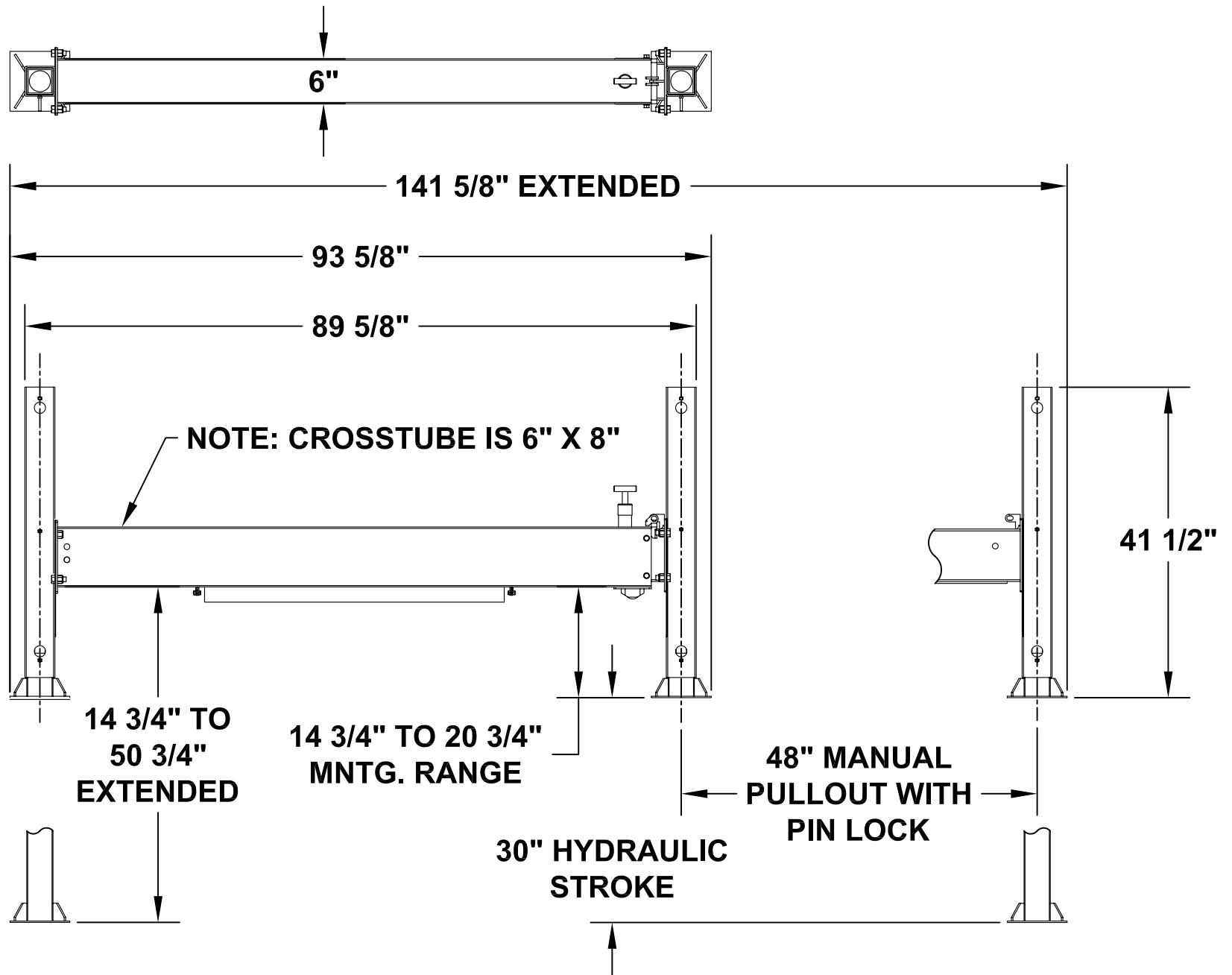
08-30-07

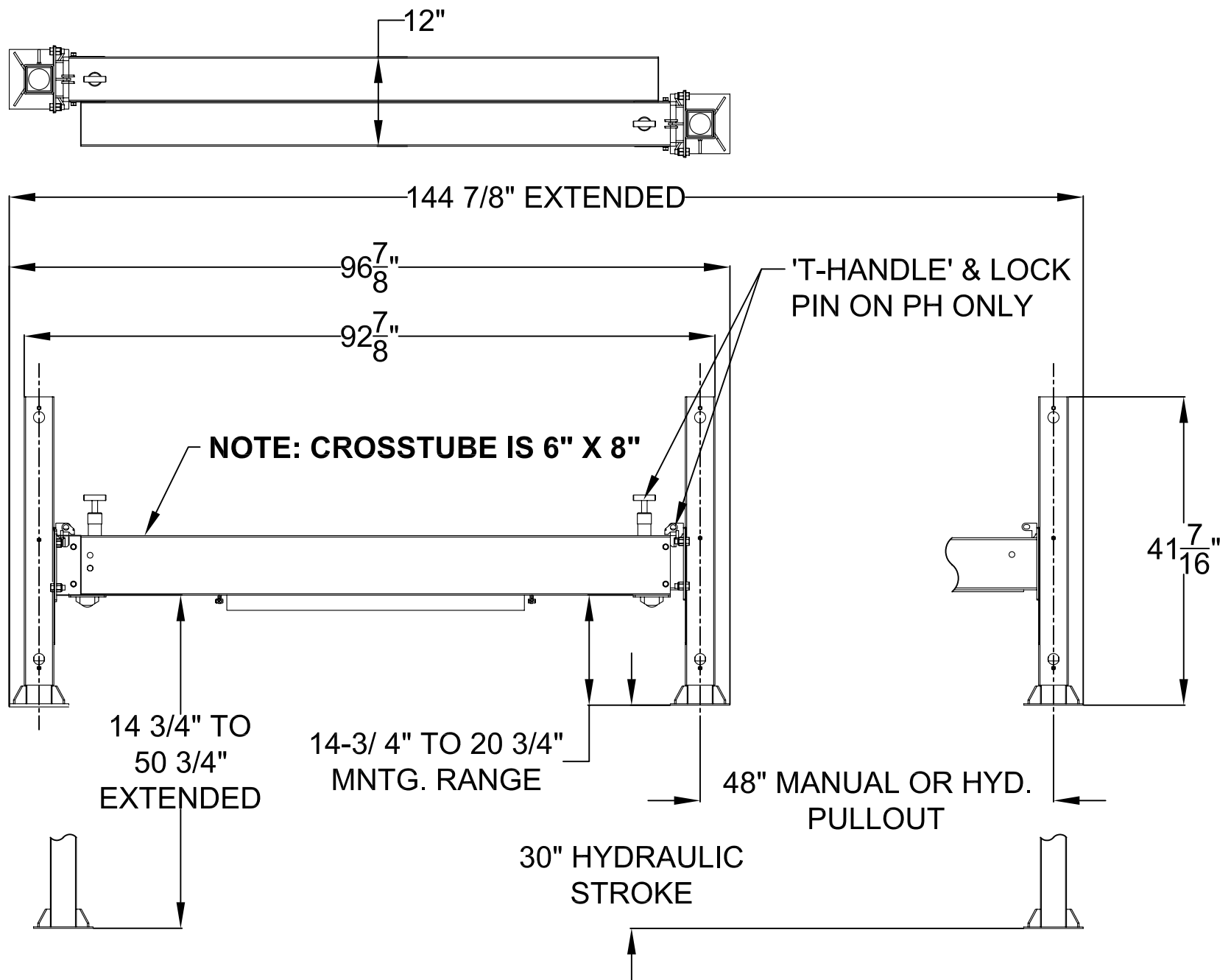
SECTION

C100

25022







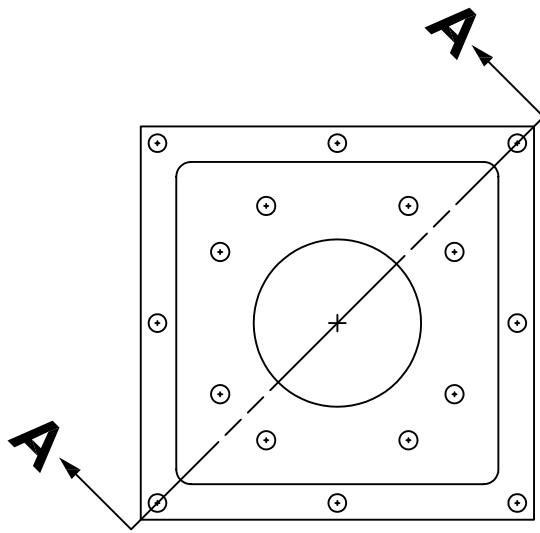
SECTION 200

INSTALLATION



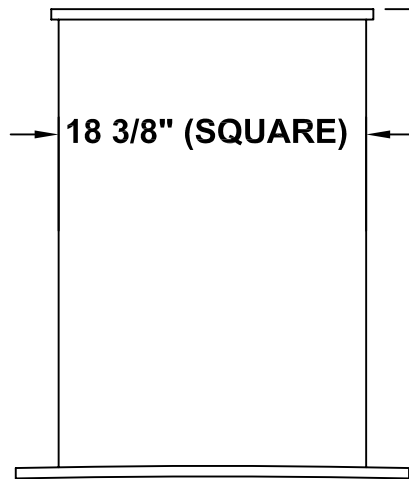
VENCO VENTURO INDUSTRIES LLC
CINCINNATI, OHIO

17830-XX PEDESTAL



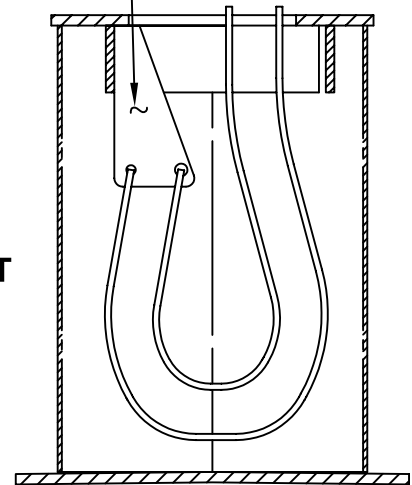
INSERT BULKHEAD
FITTINGS (FURNISHED
WITH HT40/50 CRANE)
INTO THIS BRACKET
AND ATTACH HOSES

19 1/4" (SQUARE)

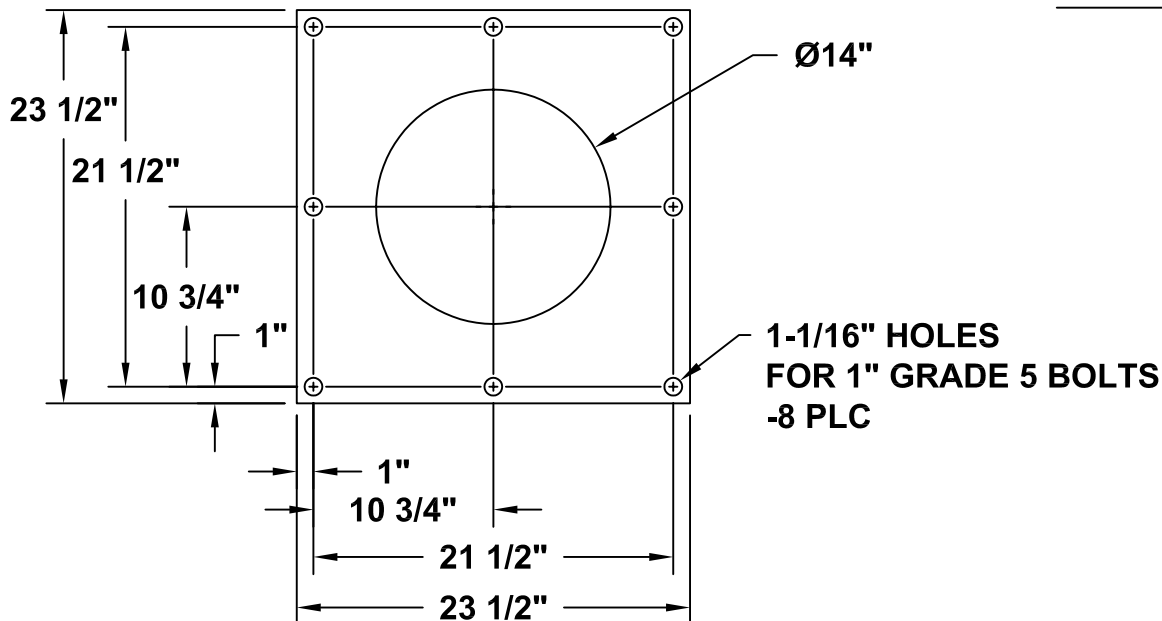


18 3/8" (SQUARE)

DASH NUMBER
SPECIFIES HEIGHT



SECTION A-A



MFG., INC.
CINCINNATI, OHIO

TITLE
MOUNTING DIMENSIONS

HT30/40/50KX CRANES

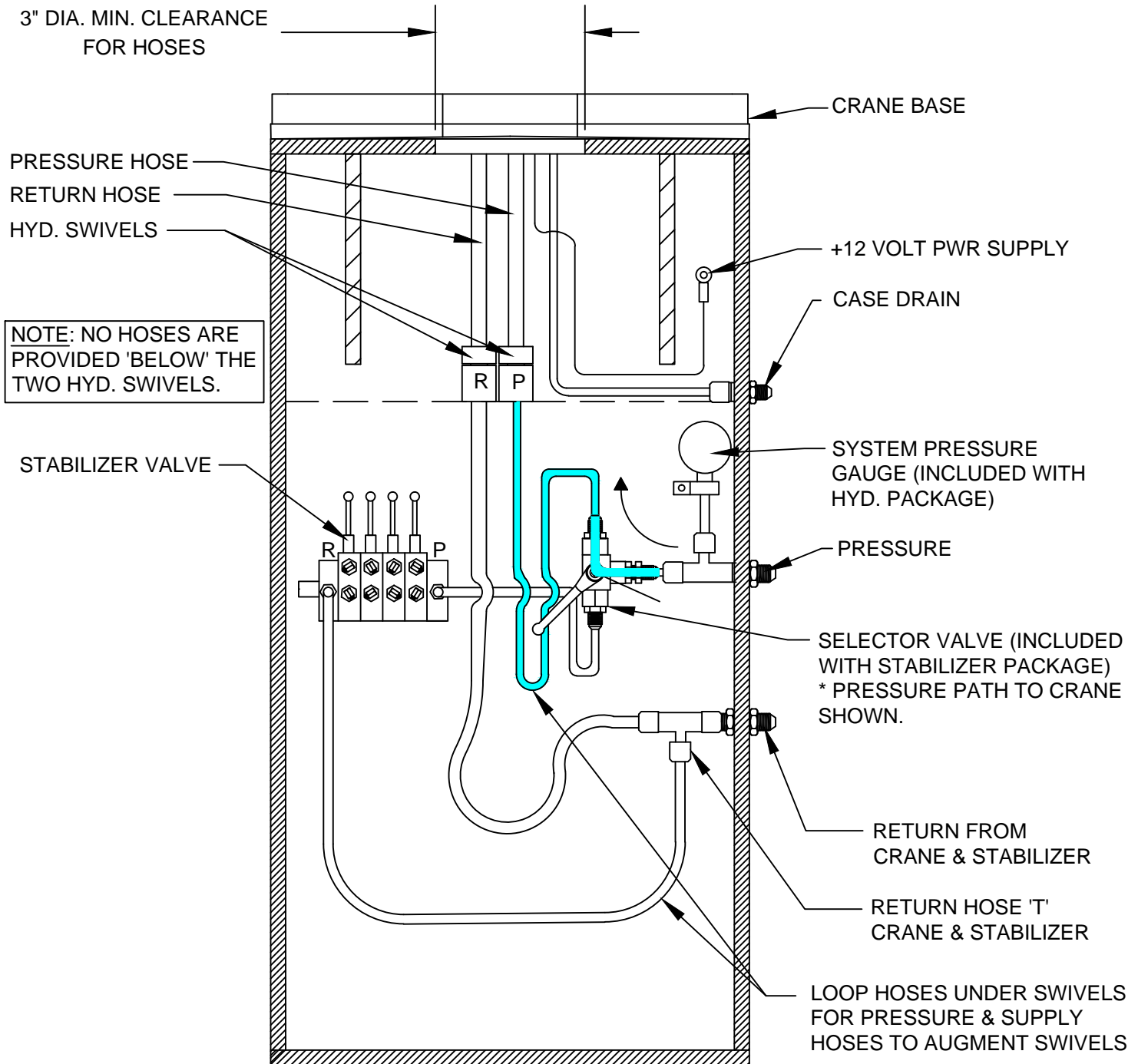
DATE
3-3-05C

SUPERSEDES
1-30-98B

SECTION
C200

17831

RECOMMENDED SUPPLY & RETURN HOSE CONNECTIONS CRANE & STABILIZERS



CAUTION

- SELECTOR VALVE MUST BE 'NON-CLOSED CENTER TRANSITION' TYPE VALVE.



CAUTION

- CASE DRAIN MUST RETURN DIRECTLY TO RESERVOIR WITHOUT RESTRICTION.



VENCO VENTURO INDUSTRIES LLC
CINCINNATI, OHIO

TITLE
CONNECTIONS GUIDE

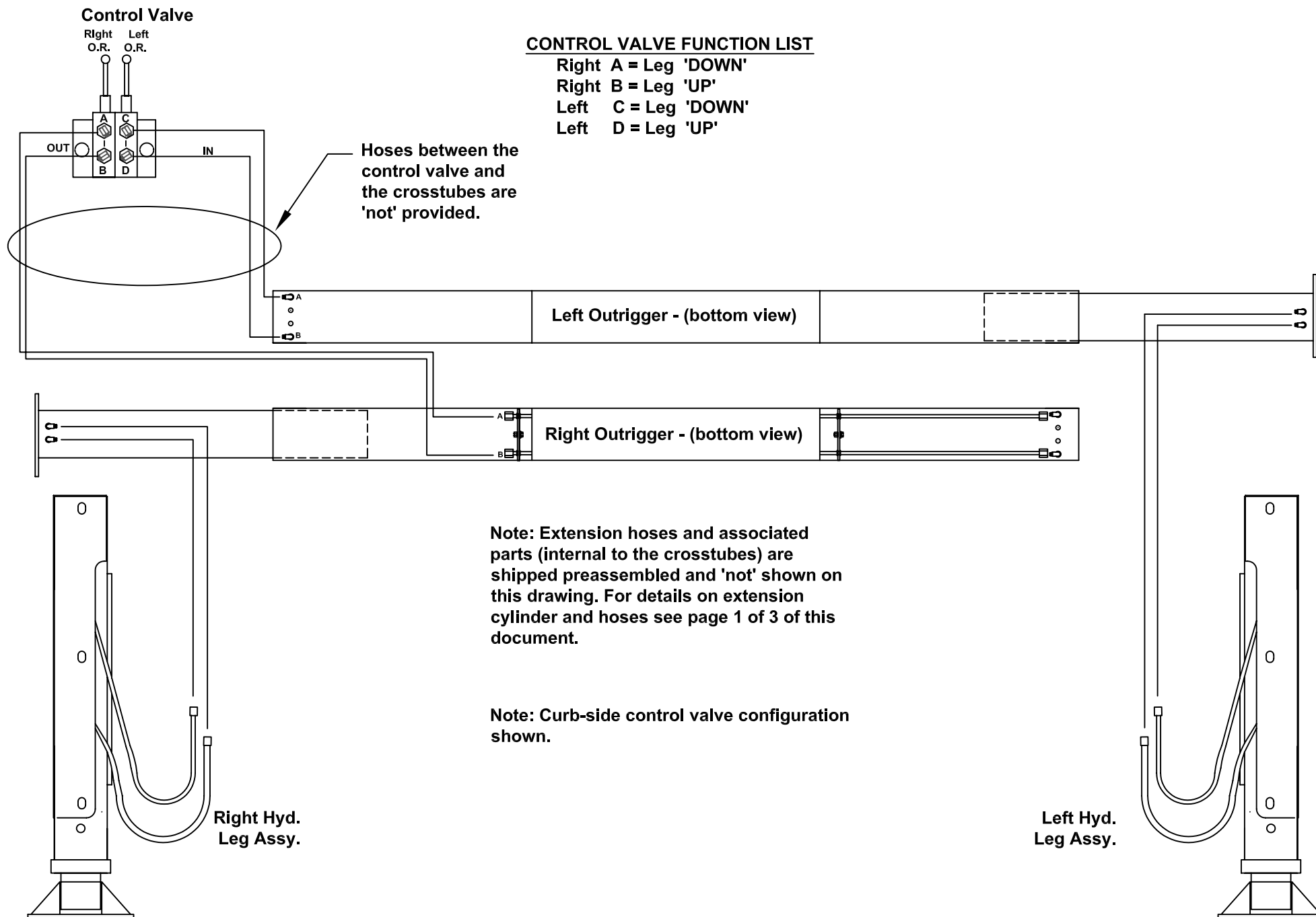
HT CRANES

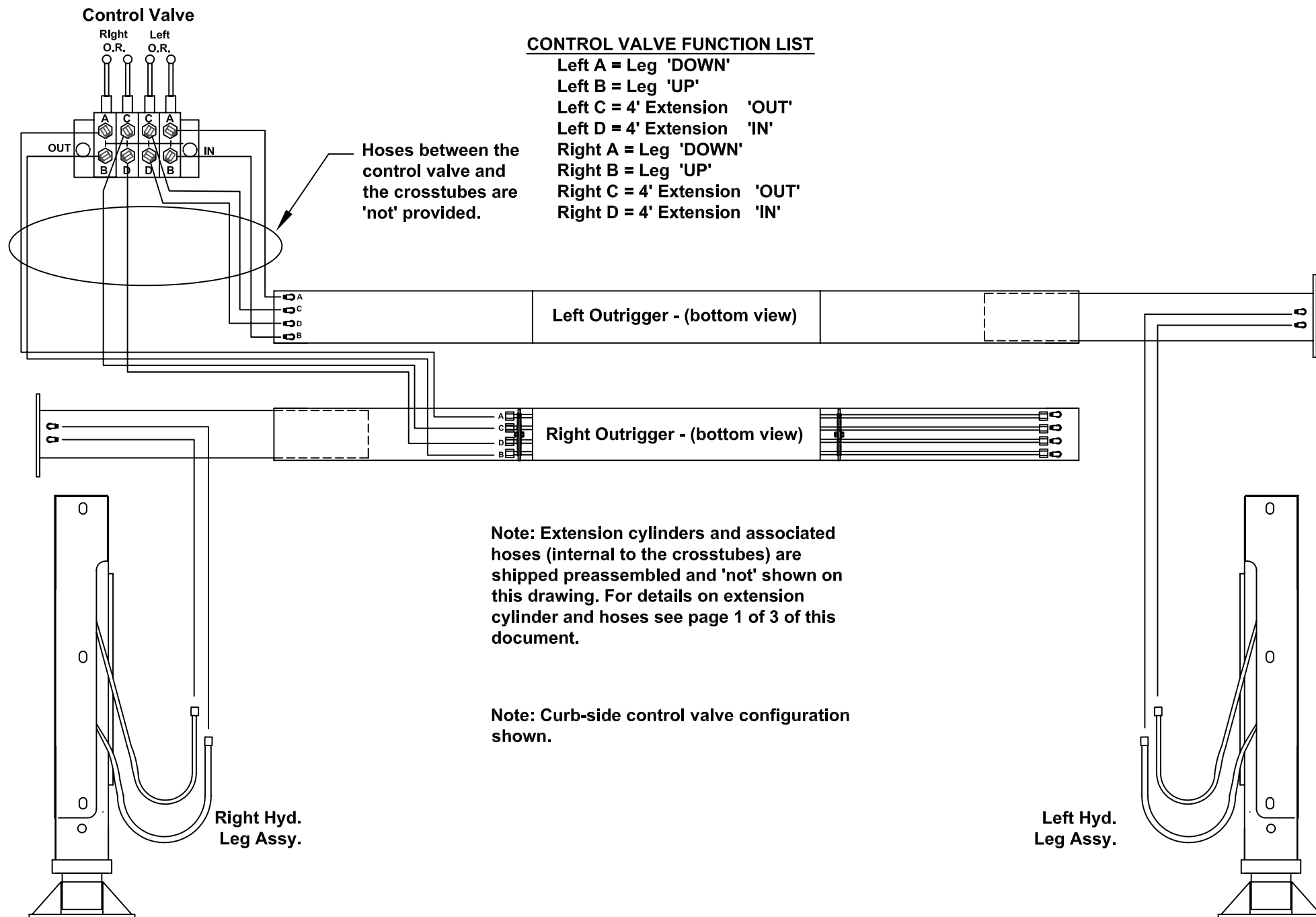
DATE
08-07-23G

SUPERSEDES
02-21-14F

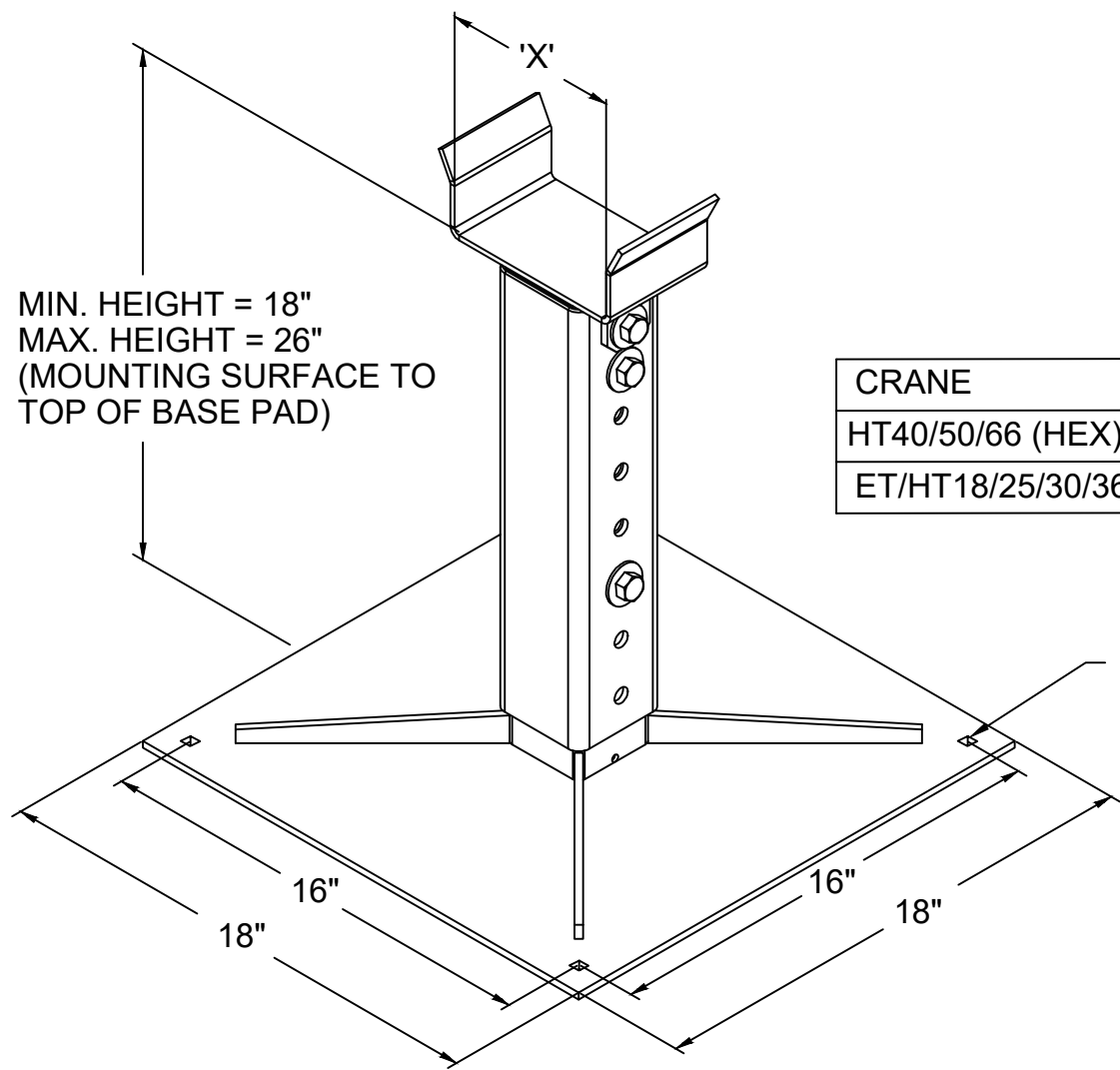
SECTION
C200

22913





20381 ADJUSTABLE BOOM REST



CRANE	DIM 'X'	DASH No.
HT40/50/66 (HEX)	6 1/4"	20381-1
ET/HT18/25/30/36	5"	20381-2

WITH SINGLE ACTING
ELEVATION CYLINDER
MECHANICAL DEVICE IS
NEEDED TO SECURE
BOOM

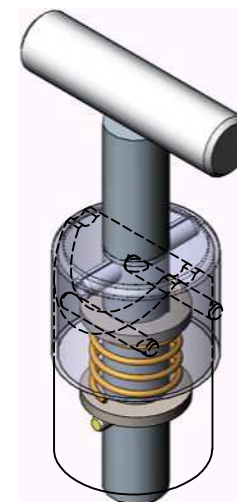
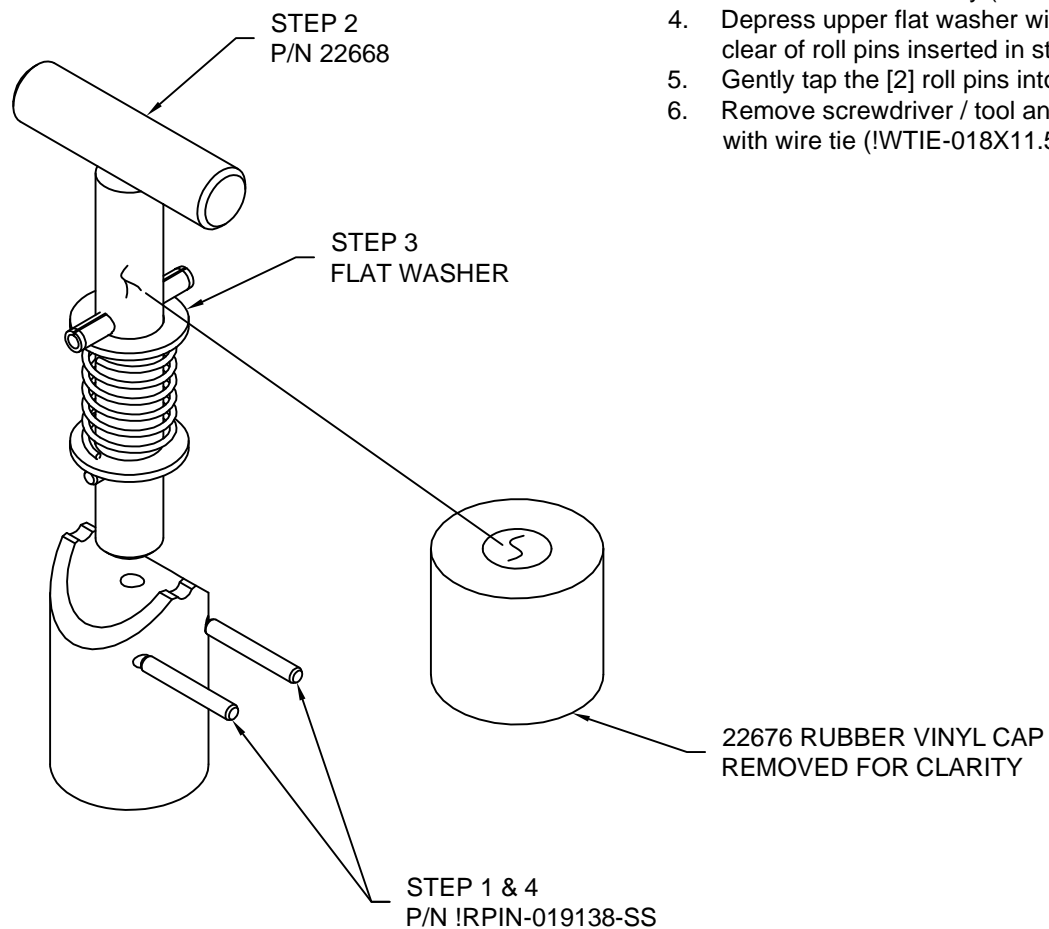


VENCO VENTURO INDUSTRIES LLC
CINCINNATI, OHIO

TITLE	DATE	SECTION
20381 ADJUSTABLE BOOM REST	03-03-23G	-
ET/HT16-66	SUPERSEDES 07-08-14F	20420

22668 PIN ASSEMBLY INSTALLATION

1. Install vinyl cap (P/N 22676) onto T-handle (P/N 22668) and temporarily peel cap away from: roll pin, washer, and spring to aid assembly.
2. Insert [2] roll pins (P/N !RPIN-019138-SS) into holes and tap into position so that the roll pins do not intrude into tube.
3. Insert handle assembly (P/N 22668) into tube so that it is resting on bottom.
4. Depress upper flat washer with screwdriver, or other suitable tool, to below and clear of roll pins inserted in step one (1).
5. Gently tap the [2] roll pins into position so that they are centered in the tube.
6. Remove screwdriver / tool and push vinyl cover over top of tube and secure with wire tie (!WTIE-018X11.5).



VENCO VENTURO INDUSTRIES LLC
CINCINNATI, OHIO

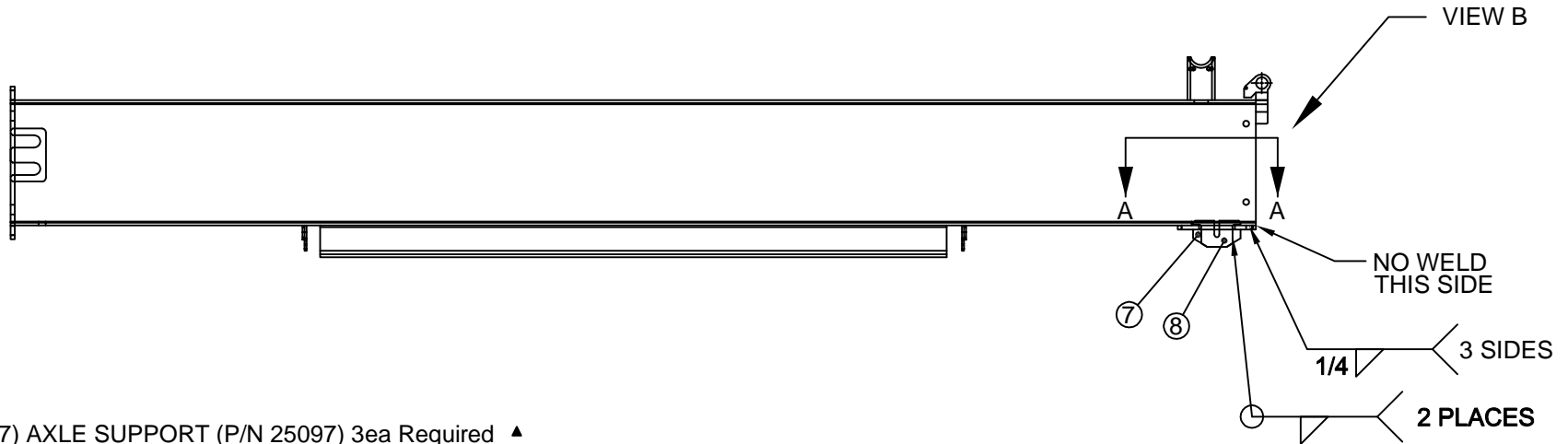
TITLE
SPRING-LOADED PIN ASSEMBLY
OUTRIGGERS

DATE
10-01-15B
SUPERSEDES
06-22-11A

SECTION
-
22882

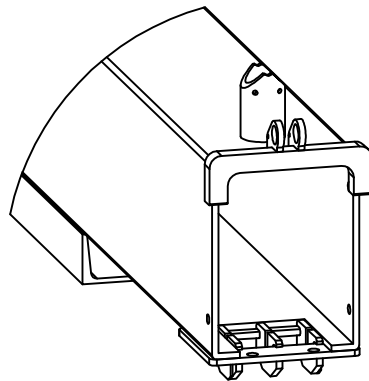
25100 OUTRIGGER AXLE SUPPORT INSTALL INSTRUCTIONS

For crosstubes that have been pre-welded to the Venturo service body

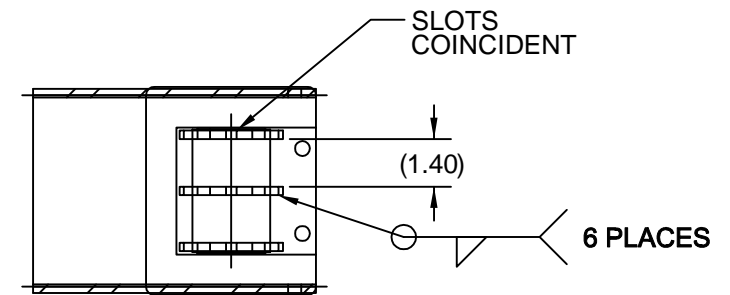


= ITEM (7) AXLE SUPPORT (P/N 25097) 3ea Required ▲

 = ITEM (8) AXLE KEEPER (P/N 25091) 2ea Required. ▲



VIEW B
(NOT TO SCALE)



SECTION A-A
(NOT TO SCALE)

NOTE: For PH & CD outrigger packages that have been purchased with the 'Less Crosstube' option, follow these instructions to install the Axle Support (P/N 25097) and the Axle Keeper (P/N 25091) as shown on this page.



VENCO VENTURO INDUSTRIES LLC
CINCINNATI, OHIO

TITLE

AXLE SUPPORT INSTALLATION

25100 SERIES OUTRIGGERS

DATE _____

06-29-15A

SUPERSEDES

03-05-13

SECTION

—

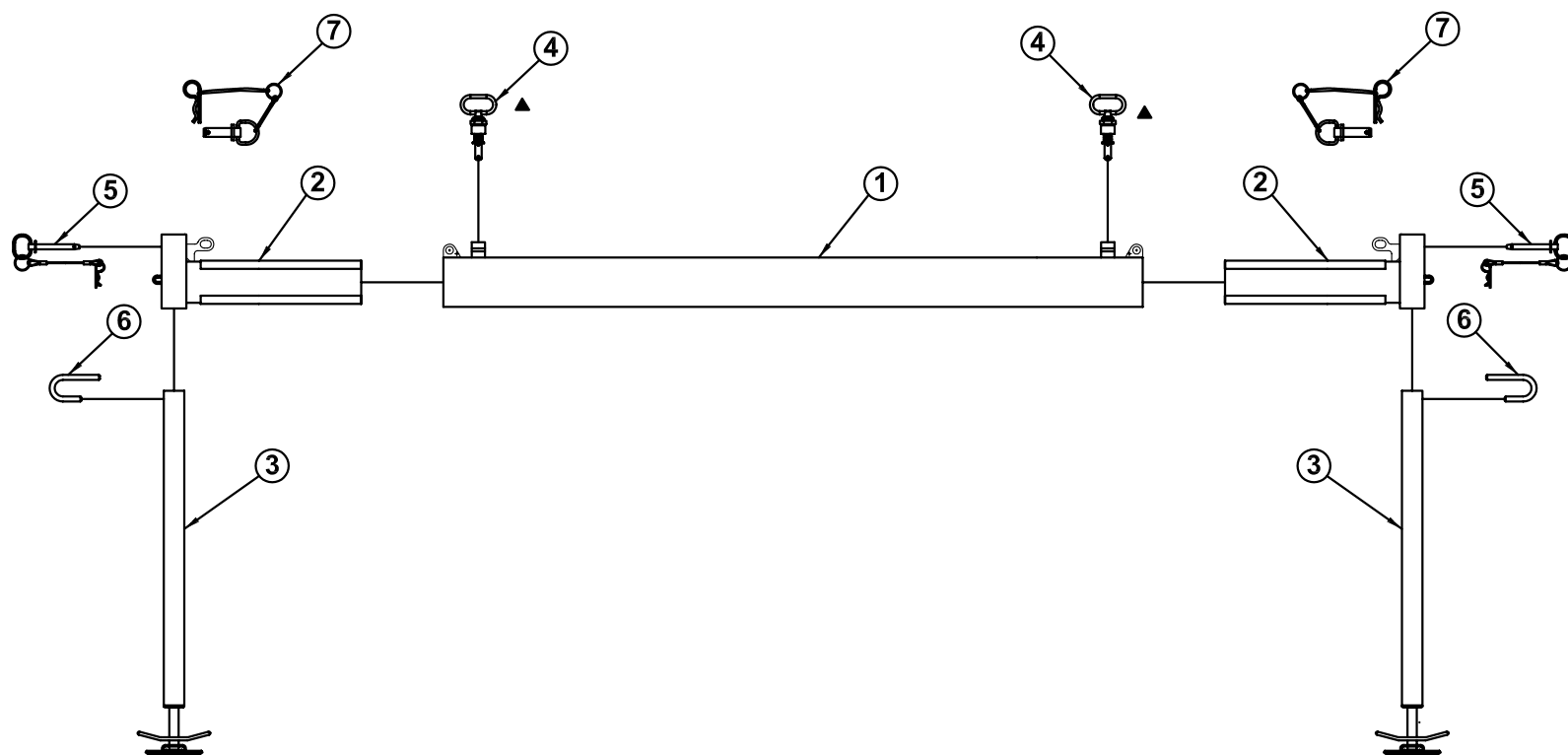
23047]

SECTION 400

REPLACEMENT PARTS



VENCO VENTURO INDUSTRIES LLC
CINCINNATI, OHIO



7	2	24981	OUTRIGGER SECURITY PIN
6	2	23980	OUTRIGGER LEG HANDLE
5	2	23976	HITCH PIN WITH LANYARD
4	2	18520	SPRING LOADED PIN ASSY
3	2	24073-5	MANUAL DROP LEG
2	2	24967-1	PULLOUT
1	1	24965	CROSS TUBE WELDED ASSY
ITEM	QTY	PART NO	DESCRIPTION



MANUFACTURING, INC.
CINCINNATI, OHIO

TITLE

REPLACEMENT PARTS DWG & LIST

DATE

2-9-04B

SECTION

C100

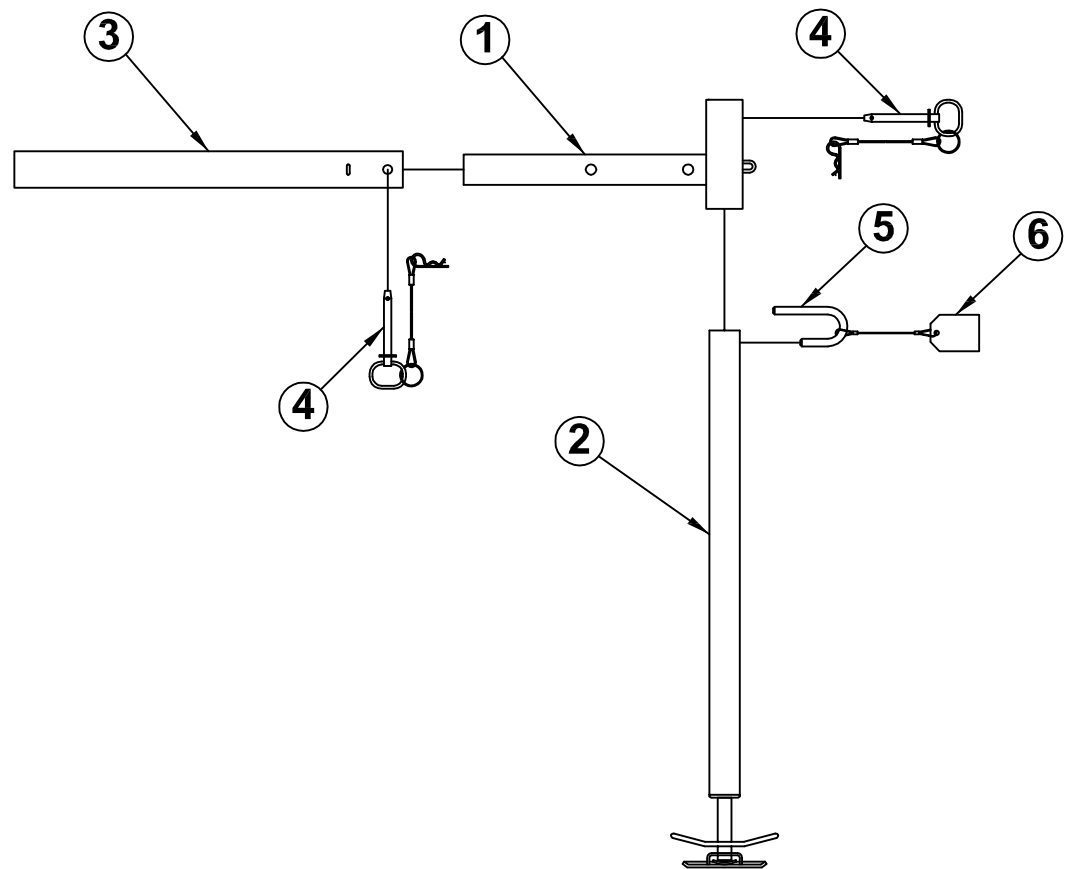
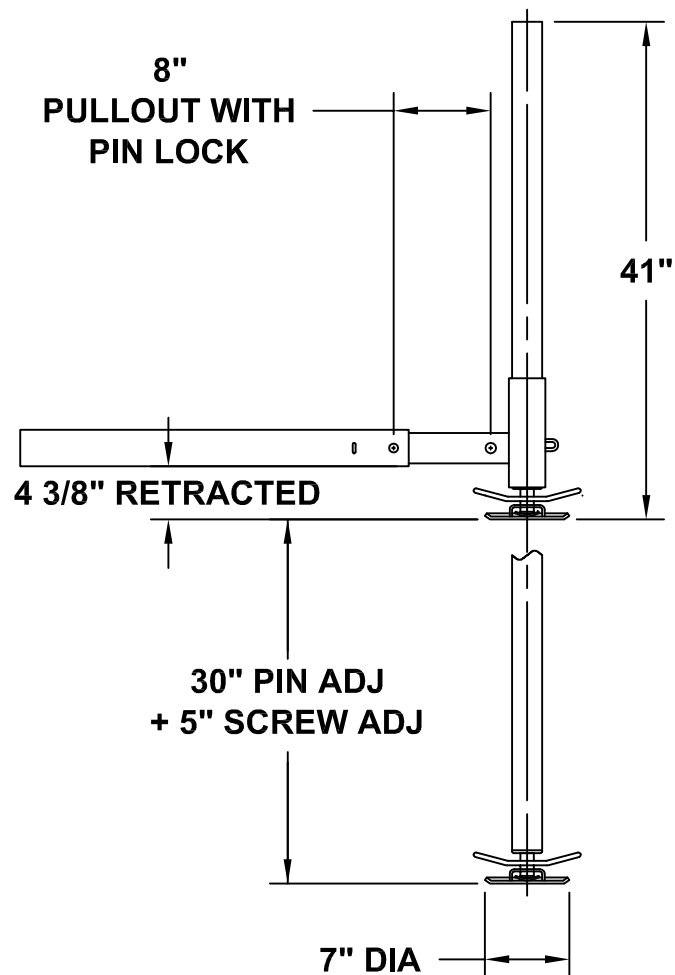
24971-FP FRONT OUTRIGGERS

SUPERSEDES

10-29-03A

23983

23962-2 STABILIZER



6	1	14517	TAG - HANDLE INSTALLATION
5	1	23980	STABILIZER LEG HANDLE
4	2	23976	HITCH PINS WITH LANYARDS
3	1	23962-4	STUB MOUNTING TUBE
2	1	24073-4-ASSY	SECONDARY LEG ASSEMBLY
1	1	23979	STUB STABILIZER
ITEM	QTY	PART NO.	DESCRIPTION



MANUFACTURING, INC.
CINCINNATI, OHIO

TITLE
INSTALLATION DRAWING

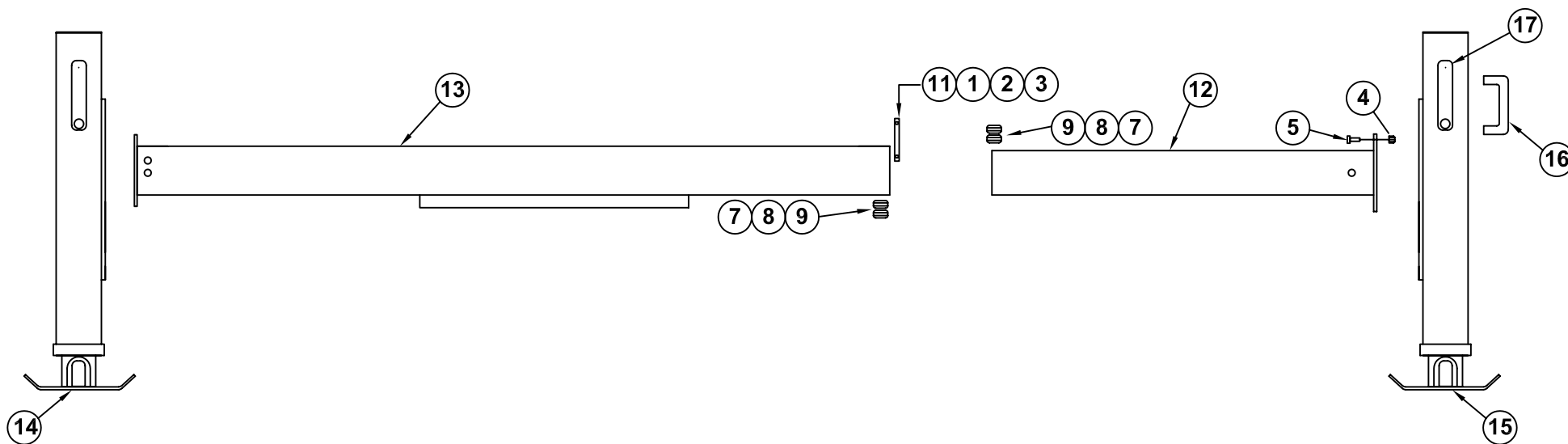
ET18KX - HT50KX

DATE
10-02-12F

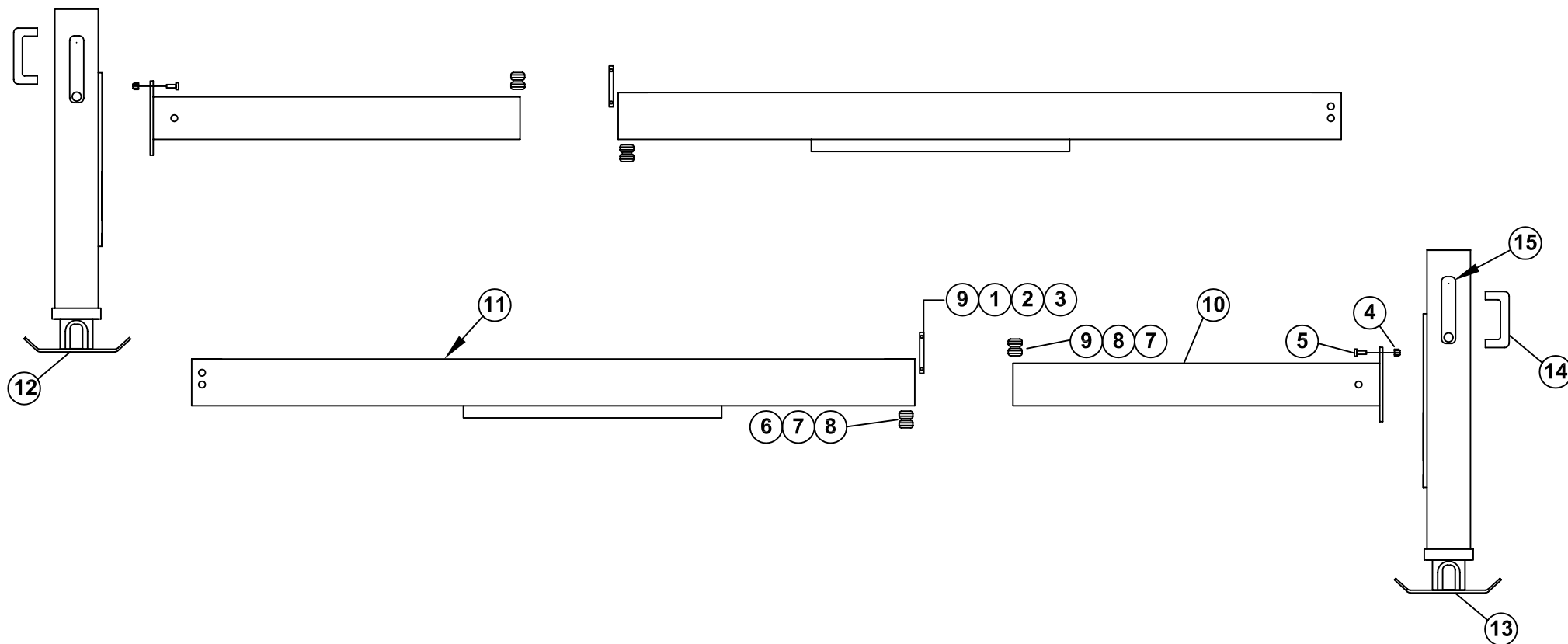
SUPERSEDES
03-03-05E

SECTION
C100

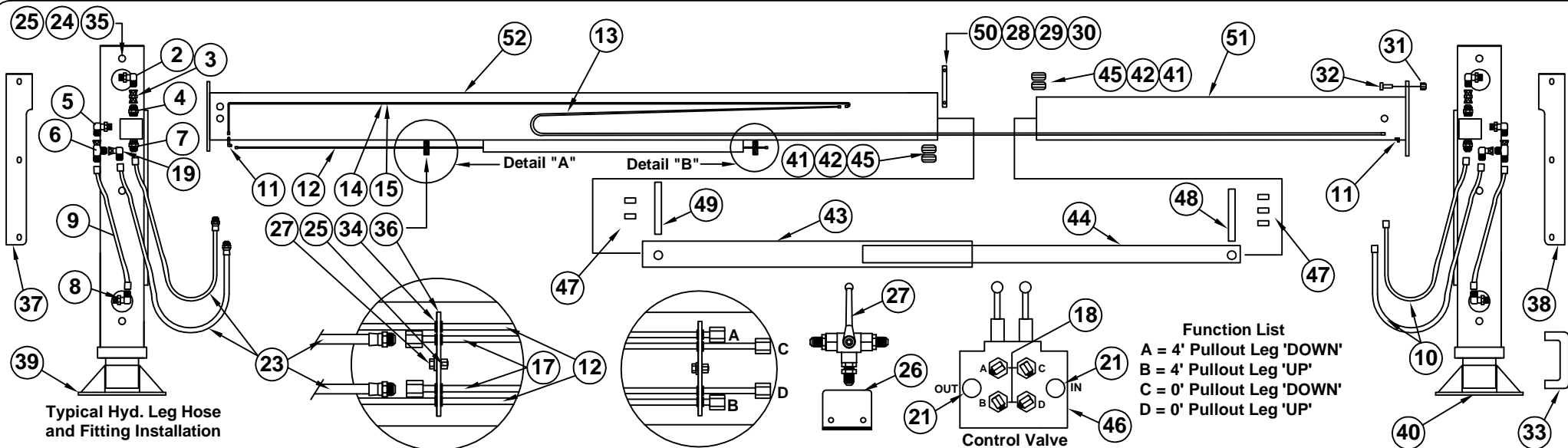
23962-2I



17	1	19009	CRANK HANDLE
16	1	19344	HANDLE - EXTENSION
15	1	25042-2	CRANKDOWN LEG WELDED ASSY. (RIGHT)
14	2	25042-1	CRANKDOWN LEG WELDED ASSY. (LEFT)
13	1	25085-3	CROSSTUBE WELDED ASSY. CD 25100 O.R.
12	1	25087-1	4' PULLOUT WELDED ASSY. CD & PH 25100 O.R.
11	2	25065	NUT BAR RETAINER
10	1	25051	PIN - BASE END EXT CYLINDER
9	4	25082	WHEEL (SKBD) LESS BEARINGS
8	8	25078	WHEEL BEARINGS - 2EA BEARINGS PER WHEEL
7	2	25090	AXLE
6	1	25083-2	HYD SHORT LEG WELDED ASSY (RIGHT)
5	8	!HHCS06311150-8	HHCS 5/8-11 X 1-1/2" LONG GRADE 8
4	8	!LNUT-06311-8	NYLON LOCK NUT GRADE 8
3	4	!HHCS03816063	HHCS 3/8-16 X 5/8" LONG GRADE 5
2	4	!LWSH-038	LOCK WASHER, 3/8
1	4	!FWSH-038	FLAT WASHER, 3/8
ITEM	QTY	PART NUMBER	DESCRIPTION



15	2	19009	CRANK HANDLE
14	2	19344	HANDLE - EXTENSION
13	1	25042-2	CRANKDOWN LEG WELDED ASSY. (RIGHT)
12	1	25042-1	CRANKDOWN LEG WELDED ASSY. (LEFT)
11	2	25085-3	CROSSTUBE WELDED ASSY. CD 25100 O.R.
10	2	25087-1	4' PULLOUT WELDED ASSY. CD & PH 25100 O.R.
9	4	25065	NUT BAR RETAINER
8	8	25082	WHEEL (SKBD) LESS BEARINGS
7	16	25078	WHEEL BEARINGS - 2EA BEARINGS PER WHEEL
6	4	25090	AXLE
5	8	!HHCS06311150-8	HHCS 5/8-11 X 1-1/2" LONG GRADE 8
4	8	!LNUT-06311-8	NYLON LOCK NUT GRADE 8
3	8	!HHCS03816063	HHCS 3/8-16 X 5/8" LONG GRADE 5
2	8	!LWSH-038	LOCK WASHER, 3/8
1	8	!FWSH-038	FLAT WASHER, 3/8
ITEM	QTY	PART NUMBER	DESCRIPTION



▲ 26	1	27784	MOUNTING BRACKET, SELECTOR VALVE	52	1	25085-1	CROSSTUBE WELDED ASSY. PHX
25	8	!LNUT-03118	LOCK NUT, NYLON 5/16-18	51	1	25087-1	4' PULLOUT WELDED ASSY.
24	6	!FWSH-031	FLAT WASHER, 5/16	50	2	25065	NUT BAR RETAINER
23	2	25153	HOSE - 54" 0' EXT. LONG LEG 4FX - 6MJ	49	1	25051	PIN - BASE END EXT CYLINDER
22	-	-	-	48	1	25052	PIN - ROD END EXT CYLINDER
21	2	H6400-0808	HYD TUBE ADAPTER 8MJ -8MO	47	5	00210	SHAFT COLLAR
20	-	-	-	46	1	22444	2 SPOOL VALVE BLOCK
19	2	H6500-0404	90DEG ELBOW - 4MJ - 4FX	45	4	25082	WHEEL (SKBD) LESS BEARINGS
18	4	H6400-0608	CONNECTOR 6MJ-8MO	44	1	25092	PIPE - 1-1/2" PVC SCH 40 (INNER) FOR PH & CD
17	2	25139	HYD TUBE ASSY, CROSSOVER 47" LONG	43	1	25079	PIPE - 2" PVC SCH 40 (OUTER) FOR PH & CD
16	2	24964	DECAL, LEG CRUSH FT. (NOT SHOWN)	42	8	25078	WHEEL BEARINGS - 2EA BEARINGS PER WHEEL
15	1	25137	HYD TUBE ASSY. RT.(UP/DWN LEG)	41	2	25090	AXLE
14	1	25136	HYD TUBE ASSY. LT.(UP/DWN LEG)	40	1	25084-2	HYD LONG LEG WELDED ASSY (RIGHT)
13	2	25149	HOSE - 80" INTERN. XTUBE UP/DWN LEG	39	1	25084-1	HYD LONG LEG WELDED ASSY (LEFT)
12	2	25138	HYD TUBE ASSY, XOVER 60" LG	38	1	25068-2	COVER - WELDED ASSY. (RIGHT)
11	4	H2701-0606	90DEG BULKHEAD 6MJ - 6MJ	37	1	25068-1	COVER - WELDED ASSY. (LEFT)
10	2	25152	HOSE - 37" 4' EXT. LONG LEG 4FX - 6FX	36	2	25157	TUBING CLAMP PLATE - (REMOVEABLE)
9	2	25061	HOSE - 25-3/8" RETURN (LEG) 4FX - 4FX	35	6	25070	SPACER - HYD LEG COVERS (LEFT & RIGHT)
8	2	H6801LL-0404	90DEG LONG ELBOW 4MO - 4MJ	34	8	14883	GROMMET - FOR HYD TUBING
7	2	H6400-0406	CONNECTOR 6MO - 4MJ	33	1	19344	HANDLE
6	2	H6602-040404	TEE 4MJ-4FJX-4MJ(SWVL. NUT RUN TEE)	32	8	!HHCS06311150-8	HHCS 5/8-11 X 1-1/2" LONG GRADE 8
5	2	H6801-0406	90DEG STD ELBOW 6MO - 4MJ	31	8	!LNUT-06311-8	NYLON LOCK NUT GRADE 8
4	2	H2404-0608	ADAPTER 6MJ - 8MP	30	4	!HHCS03816063	HHCS 3/8-16 X 5/8" LONG GRADE 5
3	2	H6565-0606	COUPLING SWIVEL 6FJX-6FJX	29	4	!LWSH-038	LOCK WASHER, 3/8
2	2	H6801L-0606	90DEG LONG ELBOW 6MO-6MJ	28	4	!FWSH-038	FLAT WASHER, 3/8
1	1	25140	HOSE & FITTING KIT - COMPLETE	▲ 27	1	27783	SELECTOR VALVE, CRANE & STABILIZERS
ITEM	QTY	PART NUMBER	DESCRIPTION	ITEM	QTY	PART NUMBER	DESCRIPTION



MANUFACTURING, INC.
CINCINNATI, OHIO

TITLE

REPLACEMENT PARTS DWG & LIST

25100-PH STABILIZERS w/HYD LONG LEGS

DATE

08-2-13D

SUPERSEDES

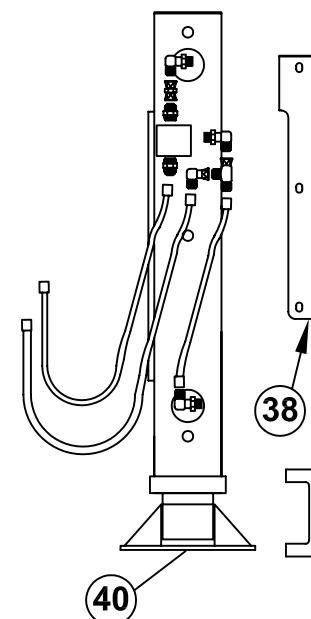
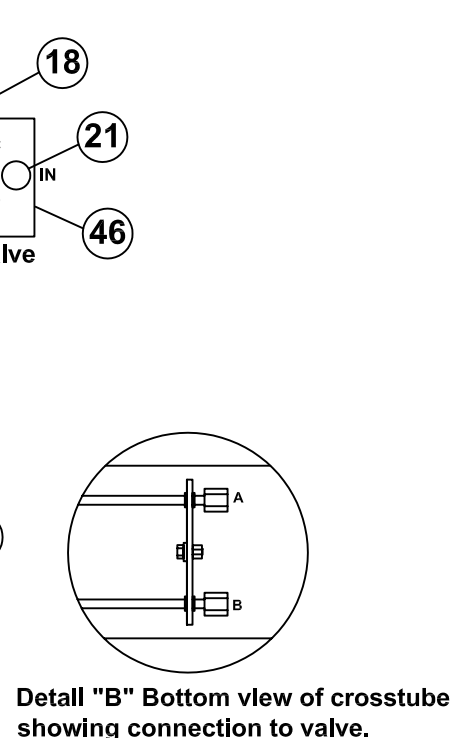
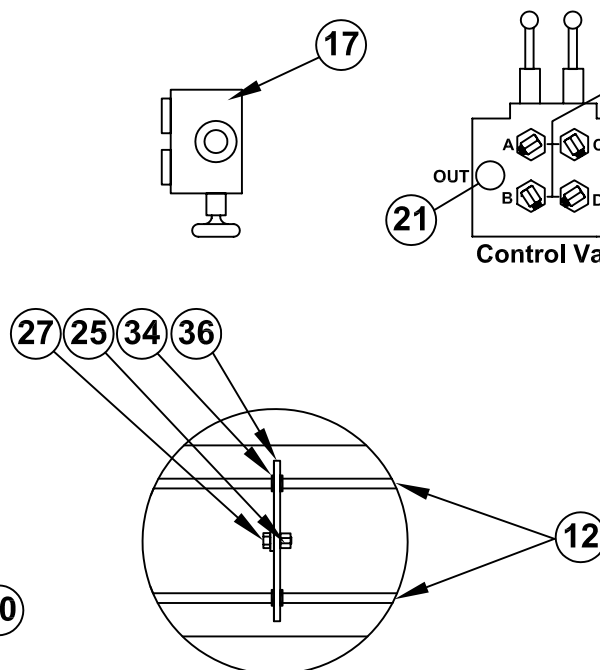
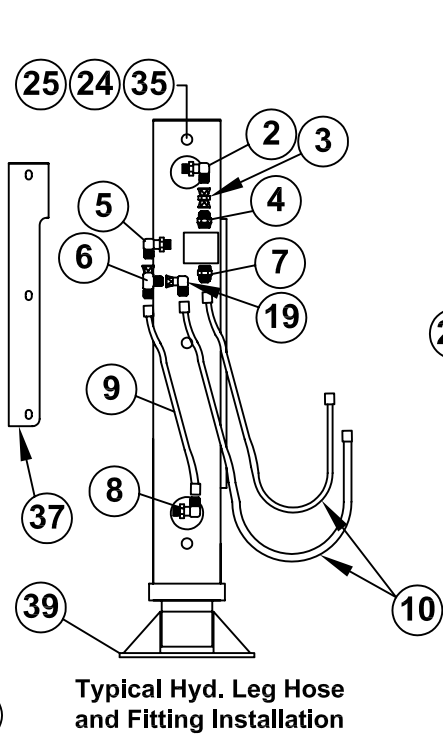
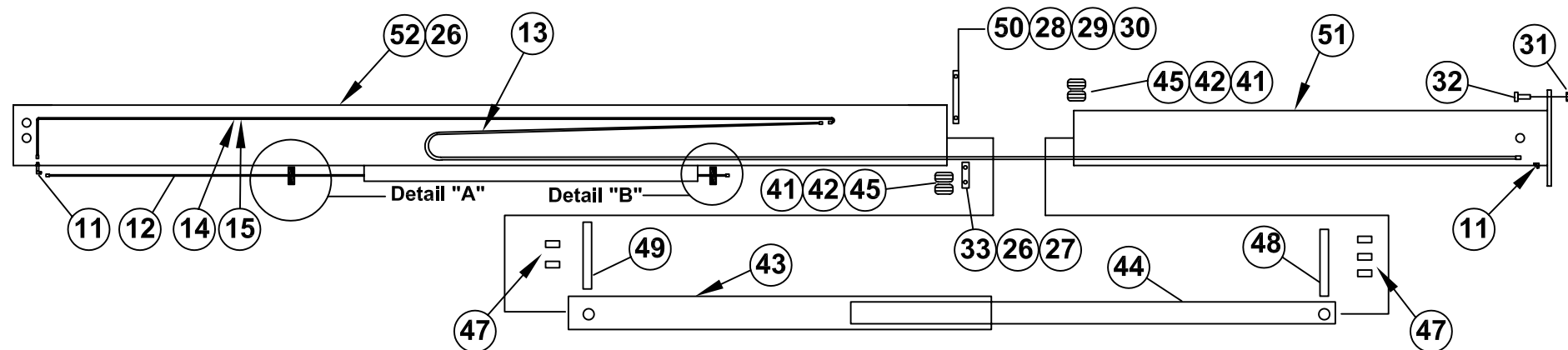
08-15-12C

SECTION

C400

25144

NOTE: Only 'ONE' Crosstube & 4' Pullout assembly (right side) is shown for clarity. However, page 2 of 3 reflects the quantities for 'DUAL' 4' Pullouts. Also see page 3 of 3 for hydraulic connections of complete system.



REPLACEMENT PARTS LIST REF 25180

26	1	25085-4	CROSSTUBE WELDED ASSY (LEFT)	52	1	25085-5	CROSSTUBE WELDED ASSY (RIGHT)
25	8	ILNUT-03118	LOCK NUT, NYLON 5/16-18	51	2	25087-1	4' PULLOUT WELDED ASSY.
24	6	IFWSH-031	FLAT WASHER, 5/16	50	4	25065	NUT BAR RETAINER
23	-	-	-	49	2	25051	PIN - BASE END EXT CYLINDER
22	-	-	-	48	2	25052	PIN - ROD END EXT CYLINDER
21	2	H6400-0808	HYD TUBE ADAPTER 8MJ -8MO	47	10	00210	SHAFT COLLAR
20	-	-	-	46	1	22444	2 SPOOL VALVE BLOCK
19	2	H6500-0404	90DEG ELBOW - 4MJ - 4FX	45	8	25082	WHEEL (SKBD) LESS BEARINGS
18	4	H6400 - 0608	CONNECTOR 6MJ - 8MO	44	2	25092	PIPE - 1-1/2" PVC SCH 40 (INNER) FOR PH & CD
17	1	27740	SELECTOR VALVE, CRANE & O.R.	43	2	25079	PIPE - 2" PVC SCH 40 (OUTER) FOR PH & CD
16	2	24964	DECAL, LEG CRUSH FT. (NOT SHOWN)	42	16	25078	WHEEL BEARINGS - 2EA BEARINGS PER WHEEL
15	1	25137	HYD TUBE ASSY. RT. (UP/DWN LEG)	41	4	25090	AXLE
14	1	25136	HYD TUBE ASSY. LT. (UP/DWN LEG)	40	1	25084-2	HYD LONG LEG WELDED ASSY (RIGHT)
13	4	25149	HOSE - 80" INTNL XTUBE UP/DWN LEG	39	1	25084-1	HYD LONG LEG WELDED ASSY (LEFT)
12	4	25138	HYD TUBE ASSY, CROSSOVER 60" LONG	38	1	25068-2	COVER - WELDED ASSY. (RIGHT)
11	8	H2701-0606	90DEG BULKHEAD 6MJ - 6MJ	37	1	25068-1	COVER - WELDED ASSY. (LEFT)
10	4	25152	HOSE - 37" 4' EXT. LONG LEG 4FX - 6FX	36	4	25157	TUBING CLAMP PLATE - (REMOVEABLE)
9	2	25063	HOSE - 16" RETURN (LEG) 4FX - 4FX	35	6	25070	SPACER - HYD LEG COVERS (LEFT & RIGHT)
8	2	H6801LL-0404	90DEG LONG ELBOW 4MO - 4MJ	34	8	14883	GROMMET - FOR HYD TUBING
7	2	H6400-0406	CONNECTOR 4MJ - 6MO	33	2	19344	HANDLE
6	2	H6602-040404	TEE 4MJ-4FJX-4MJ(SWVL. NUT RUN TEE)	32	8	IHHCS06311150-8	HHCS 5/8-11 X 1-1/2" LONG GRADE 8
5	2	H6801-0406	90DEG STD ELBOW 6MO - 4MJ	31	8	ILNUT-06311-8	NYLON LOCK NUT GRADE 8
4	2	H2404-0608	ADAPTER 6MJ - 8MP	30	8	IHHCS03816063	HHCS 3/8-16 X 5/8" LONG GRADE 5
3	2	H6565-0606	COUPLING SWIVEL 6FJX-6FJX	29	8	ILWSH-038	LOCK WASHER, 3/8
2	2	H6801L-0606	90DEG LONG ELBOW 6MO-6MJ	28	8	IFWSH-038	FLAT WASHER, 3/8
1	1	25181	HOSE & FITTING KIT - COMPLETE	27	4	IHHCS03118075	HHCS 5/16-18 X 3/4" LONG GRADE 5
ITEM	QTY	PART NUMBER	DESCRIPTION	ITEM	QTY	PART NUMBER	DESCRIPTION

REPLACEMENT PARTS DWG REF 25179



MANUFACTURING, INC.
CINCINNATI, OHIO

TITLE

REPL PARTS DWG & LIST (PAGE 2 OF 3)

25100-PH DUAL 4' O.R. w/HYD LONG LEGS

DATE

08-15-12C

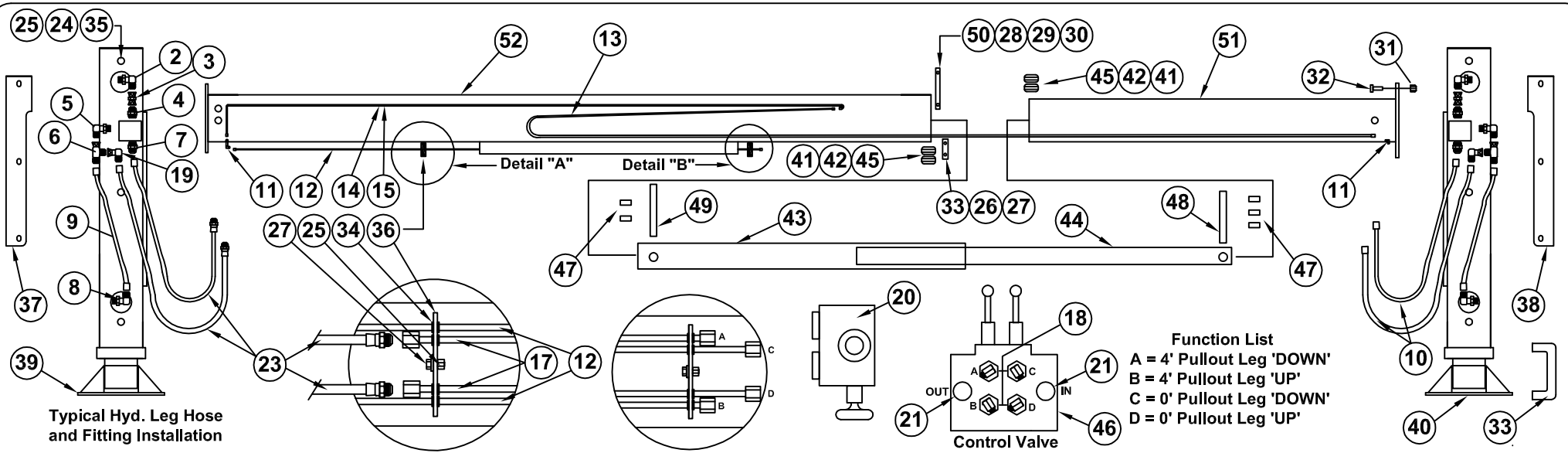
SUPERSEDES

09-14-10B

SECTION

C400

25180



26	-	-	-	52	1	25085-1	CROSSTUBE WELDED ASSY. PHX
25	8	ILNUT-03118	LOCK NUT, NYLON 5/16-18	51	1	25087-1	4' PULLOUT WELDED ASSY.
24	6	IFWSH-031	FLAT WASHER, 5/16	50	2	25065	NUT BAR RETAINER
23	2	25151	HOSE - 47" 0' EXT. SHORT LEG 4FX - 6MJ	49	1	25051	PIN - BASE END EXT CYLINDER
22	-	-	-	48	1	25052	PIN - ROD END EXT CYLINDER
21	2	H6400-0808	HYD TUBE ADAPTER 8MJ -8MO	47	5	00210	SHAFT COLLAR
20	1	27740	SELECTOR VALVE, CRANE & O.R.	46	1	22444	2 SPOOL VALVE BLOCK
19	2	H6500-0404	90DEG ELBOW - 4MJ - 4FX	45	4	25082	WHEEL (SKBD) LESS BEARINGS
18	4	H6400-0608	CONNECTOR 6MJ - 8MO	44	1	25092	PIPE - 1-1/2" PVC SCH 40 (INNER) FOR PH & CD
17	2	25139	HYD TUBE ASSY, CROSSOVER 47" LONG	43	1	25079	PIPE - 2" PVC SCH 40 (OUTER) FOR PH & CD
16	2	24964	DECAL, LEG CRUSH FT. (NOT SHOWN)	42	8	25078	WHEEL BEARINGS - 2EA BEARINGS PER WHEEL
15	1	25137	HYD TUBE ASSY. RT.(UP/DWN LEG)	41	2	25090	AXLE
14	1	25136	HYD TUBE ASSY. LT.(UP/DWN LEG)	40	1	25083-2	HYD SHORT LEG WELDED ASSY (RIGHT)
13	2	25149	HOSE - 80" INTNL XTUBE UP/DWN LEG	39	1	25083-1	HYD SHORT LEG WELDED ASSY (LEFT)
12	2	25138	HYD TUBE ASSY, CROSSOVER 60" LONG	38	1	25069-2	COVER - WELDED ASSY. (RIGHT)
11	4	H2701-0606	90DEG BULKHEAD 6MJ - 6MJ	37	1	25069-1	COVER - WELDED ASSY. (LEFT)
10	2	25147	HOSE - 27" 4' EXT. SHORT LEG 4FX - 6FX	36	2	25157	TUBING CLAMP PLATE - (REMOVEABLE)
9	2	25063	HOSE - 16" RETURN (LEG) 4FX - 4FX	35	6	25070	SPACER - HYD LEG COVERS (LEFT & RIGHT)
8	2	H6801LL-0404	90DEG LONG ELBOW 4MO - 4MJ	34	8	14883	GROMMET - FOR HYD TUBING
7	2	H6400-0406	CONNECTOR 6MO - 4MJ	33	1	19344	HANDLE
▲ 6	2	H6602-040404	TEE 4MJ-4FJX-4MJ(SWVL. NUT RUN TEE)	32	8	IHHCS06311150-8	HHCS 5/8-11 X 1-1/2" LONG GRADE 8
5	2	H6801-0406	90DEG STD ELBOW 6MO - 4MJ	31	8	ILNUT-06311-8	NYLON LOCK NUT GRADE 8
4	2	H2404-0608	ADAPTER 6MJ - 8MP	30	4	IHHCS03816063	HHCS 3/8-16 X 5/8" LONG GRADE 5
3	2	H6565-0606	COUPLING SWIVEL 6FJX-6FJX	29	4	ILWSH-038	LOCK WASHER, 3/8
2	2	H6801L-0606	90DEG LONG ELBOW 6MO-6MJ	28	4	IFWSH-038	FLAT WASHER, 3/8
1	1	25150	HOSE & FITTING KIT - COMPLETE	27	2	IHHCS03118075	HHCS 5/16-18 X 3/4" LONG GRADE 5
ITEM	QTY	PART NUMBER	DESCRIPTION	ITEM	QTY	PART NUMBER	DESCRIPTION



MANUFACTURING, INC.
CINCINNATI, OHIO

TITLE

REPLACEMENT PARTS DWG & LIST

DATE

08-15-12C

SECTION

C400

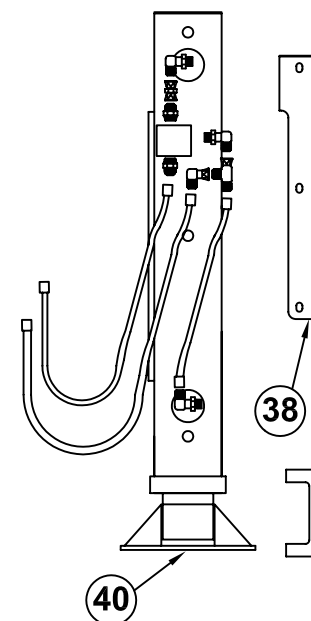
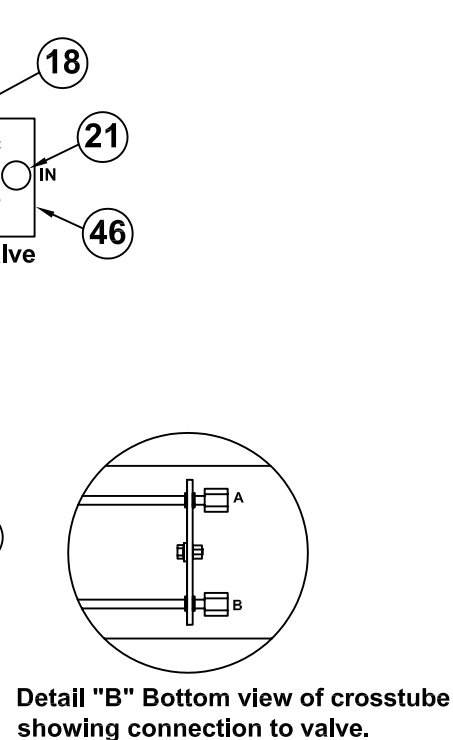
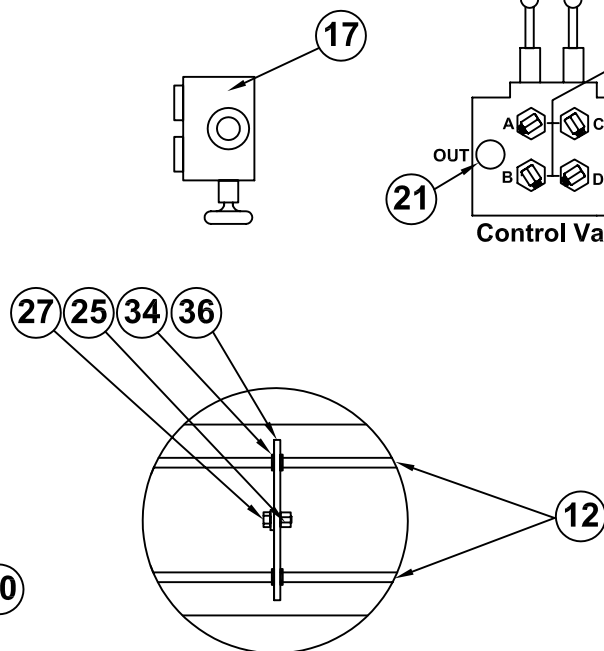
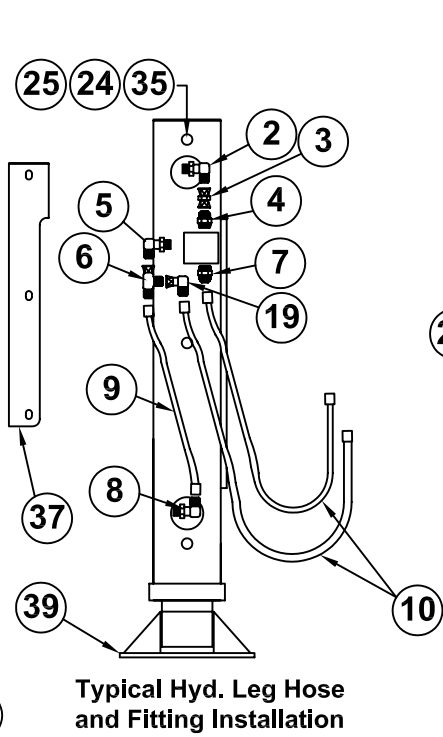
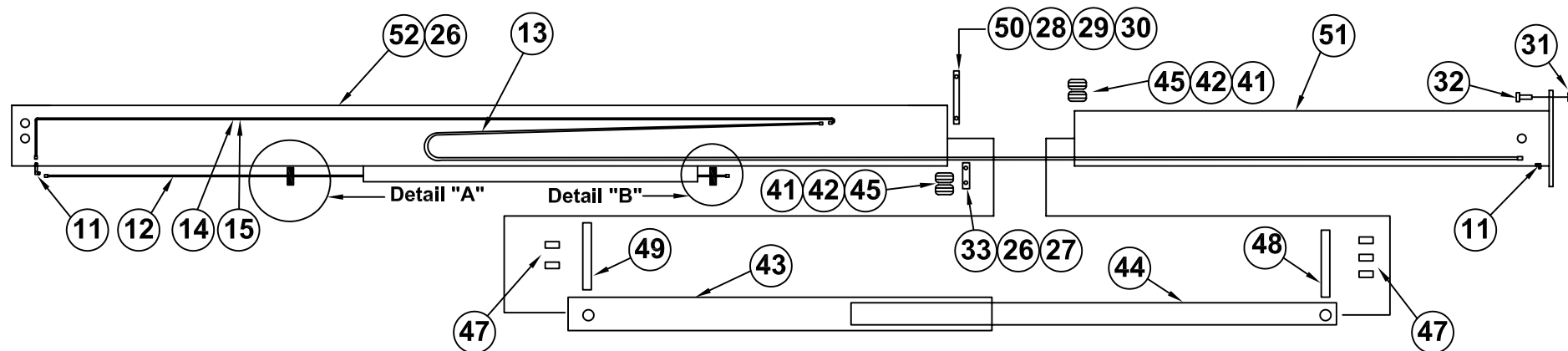
SUPERSEDES

07-08-10B

25100-PH STABILIZERS w/HYD SHORT LEGS

25143

NOTE: Only 'ONE' Crosstube & 4' Pullout assembly (right side) is shown for clarity. However, page 2 of 3 reflects the quantities for 'DUAL' 4' Pullouts. Also see page 3 of 3 for hydraulic connections of complete system.



REPLACEMENT PARTS LIST REF 25176

26	1	25085-4	CROSSTUBE WELDED ASSY (LEFT)	52	1	25085-5	CROSSTUBE WELDED ASSY (RIGHT)
25	8	ILNUT-03118	LOCK NUT, NYLON 5/16-18	51	2	25087-1	4' PULLOUT WELDED ASSY.
24	6	IFWSH-031	FLAT WASHER, 5/16	50	4	25065	NUT BAR RETAINER
23	-	-	-	49	2	25051	PIN - BASE END EXT CYLINDER
22	-	-	-	48	2	25052	PIN - ROD END EXT CYLINDER
21	2	H6400-0808	HYD TUBE ADAPTER 8MJ -8MO	47	10	00210	SHAFT COLLAR
20	-	-	-	46	1	22444	2 SPOOL VALVE BLOCK
19	2	H6500-0404	90DEG ELBOW - 4MJ - 4FX	45	8	25082	WHEEL (SKBD) LESS BEARINGS
18	4	H6400-0608	CONNECTOR 6MJ - 8MO	44	2	25092	PIPE - 1-1/2" PVC SCH 40 (INNER) FOR PH & CD
17	1	27740	SELECTOR VALVE, CRANE & O.R.	43	2	25079	PIPE - 2" PVC SCH 40 (OUTER) FOR PH & CD
16	2	24964	DECAL, LEG CRUSH FT. (NOT SHOWN)	42	16	25078	WHEEL BEARINGS - 2EA BEARINGS PER WHEEL
15	1	25137	HYD TUBE ASSY. RT. (UP/DWN LEG)	41	4	25090	AXLE
14	1	25136	HYD TUBE ASSY. LT. (UP/DWN LEG)	40	1	25083-2	HYD SHORT LEG WELDED ASSY (RIGHT)
13	4	25149	HOSE - 80" INTNL XTUBE UP/DWN LEG	39	1	25083-1	HYD SHORT LEG WELDED ASSY (LEFT)
12	4	25138	HYD TUBE ASSY, CROSSOVER 60" LONG	38	1	25069-2	COVER - WELDED ASSY. (RIGHT)
11	8	H2701-0606	90DEG BULKHEAD 6MJ - 6MJ	37	1	25069-1	COVER - WELDED ASSY. (LEFT)
10	4	25147	HOSE - 27" 4' EXT. SHORT LEG 4FX - 6FX	36	4	25157	TUBING CLAMP PLATE - (REMOVEABLE)
9	2	25063	HOSE - 16" RETURN (LEG) 4FX - 4FX	35	6	25070	SPACER - HYD LEG COVERS (LEFT & RIGHT)
8	2	H6801LL-0404	90DEG LONG ELBOW 4MO - 4MJ	34	8	14883	GROMMET - FOR HYD TUBING
7	2	H6400-0406	CONNECTOR 4MJ - 6MO	33	2	19344	HANDLE
6	2	H6602-040404	TEE 4MJ-4FJX-4MJ (SWVL. NUT RUN TEE)	32	8	IHHCS06311150-8	HHCS 5/8-11 X 1-1/2" LONG GRADE 8
5	2	H6801-0406	90DEG STD ELBOW 6MO - 4MJ	31	8	ILNUT-06311-8	NYLON LOCK NUT GRADE 8
4	2	H2404-0608	ADAPTER 6MJ - 8MP	30	8	IHHCS03816063	HHCS 3/8-16 X 5/8" LONG GRADE 5
3	2	H6565-0606	COUPLING SWIVEL 6FJX-6FJX	29	8	ILWSH-038	LOCK WASHER, 3/8
2	2	H6801L-0606	90DEG LONG ELBOW 6MO-6MJ	28	8	IFWSH-038	FLAT WASHER, 3/8
1	1	25178	HOSE & FITTING KIT - COMPLETE	27	4	IHHCS03118075	HHCS 5/16-18 X 3/4" LONG GRADE 5
ITEM	QTY	PART NUMBER	DESCRIPTION	ITEM	QTY	PART NUMBER	DESCRIPTION

REPLACEMENT PARTS DWG REF 25175



MANUFACTURING, INC.
CINCINNATI, OHIO

TITLE

REPL PARTS DWG & LIST (PAGE 2 OF 3)

25100-PH DUAL 4' O.R. w/HYD SHORT LEGS

DATE

08-15-12B

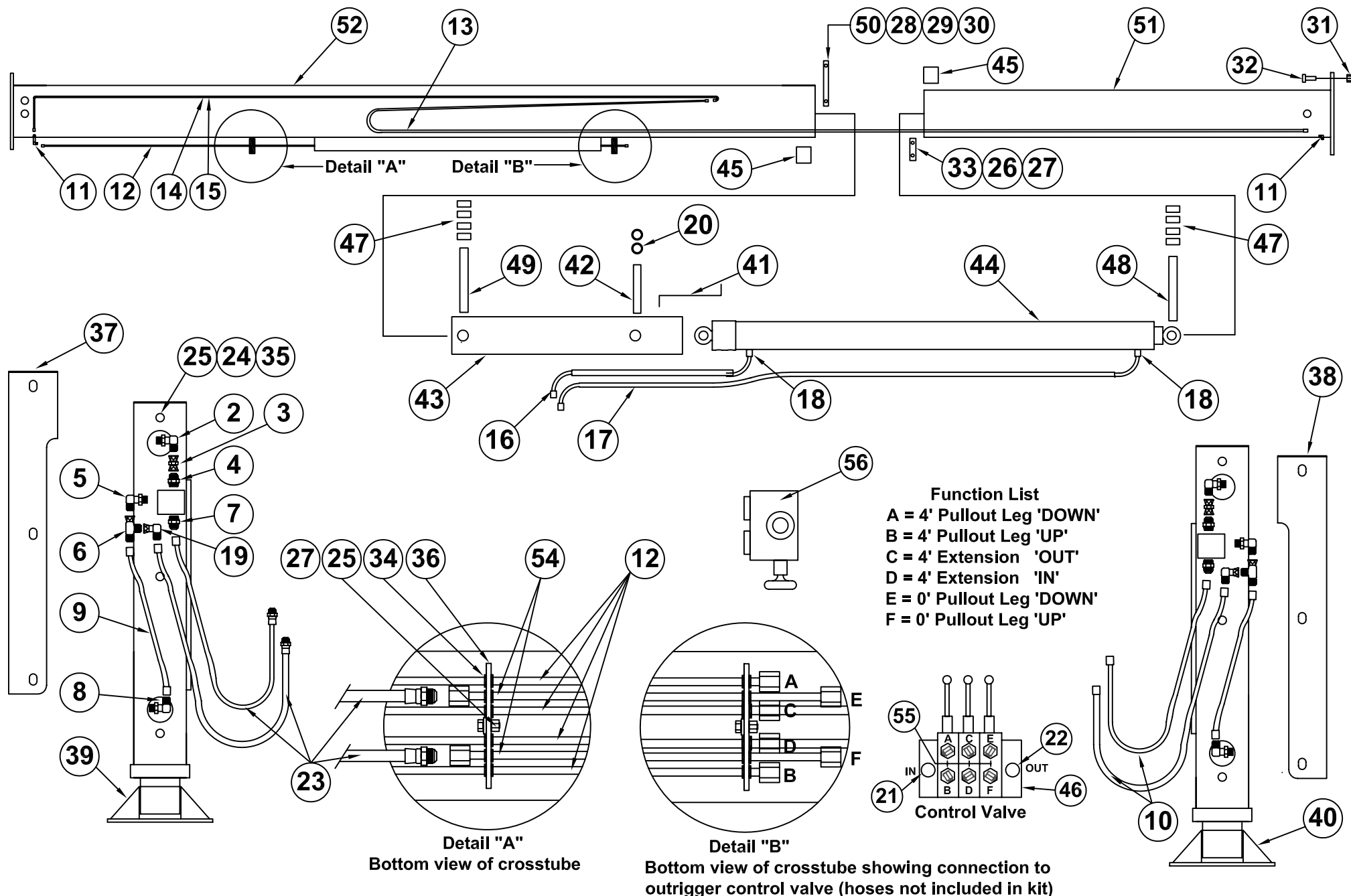
SUPERSEDES

07-08-10A

SECTION

C400

25176



				56	1	27740	SELECTOR VALVE, CRANE & O.R.
				55	6	H6400-0608	CONNECTOR 6MJ-8MO
				54	2	25139	HYD TUBE ASSY. XOVER ASSY. 47" LG
				53	2	24964	DECAL, HYD LEG CRUSH FOOT (NOT SHOWN)
26	2	!LWSH-031	LOCK WASHER 5/16, SPLIT	52	1	25085-2	CROSSTUBE WELDED ASSY. PHX
25	8	!LNUT-03118	LOCK NUT, NYLON 5/16-18	51	1	25087-2	4' PULLOUT WELDED ASSY.
24	6	!FWSH-031	FLAT WASHER, 5/16	50	2	25065	NUT BAR RETAINER
23	2	25153	HOSE - 54" 0' EXT. LONG LEG 4FX - 6MJ	49	1	25051	PIN - BASE END EXT CYLINDER
22	1	H6400 - 0810	HYD TUBE ADAPTER 8MJ -10MO	48	1	25052	PIN - ROD END EXT CYLINDER
21	1	H6400 - 0808	HYD TUBE ADAPTER 8MJ - 8MO	47	8	00210	SHAFT COLLAR
20	2	!SRNG-075	SNAP-RING 3/4" PLATED	46	1	25050	3 SPOOL VALVE BLOCK
19	2	H6500 - 0404	90DEG ELBOW - 4MJ - 4FX	45	2	25081	UHMW PAD - FOR CROSSTUBE AND PULLOUT
18	2	H6400 - 0408	CONNECTOR 4MJ - 8MO	44	1	25086	EXTENSION CYLINDER
17	1	25155	HYD HOSE EXT CYL (ROD END)	43	1	25088	EXTENSION TUBE - FOR EXTENSION CYLINDER
16	1	25154	HYD HOSE EXT CYL (BASE END)	42	1	25049	PIN - CONNECTS EXT CYL WITH EXT TUBE
15	1	25137	HYD TUBE ASSY. RT. (UP/DWN LEG)	41	3	25080	SHIM - FORMED
14	1	25136	HYD TUBE ASSY. LT.(UP/DWN LEG)	40	1	25084-2	HYD SHORT LEG WELDED ASSY (RIGHT)
13	2	25149	HOSE - 80" INTERNL XTUBE UP/DWN LEG	39	1	25084-1	HYD SHORT LEG WELDED ASSY (LEFT)
12	4	25138	HYD TUBE ASSY. XOVER ASSY. 60" LG	38	1	25068-2	COVER - WELDED ASSY. (RIGHT)
11	6	H2701- 0606	90DEG BULKHEAD 6MJ - 6MJ	37	1	25068-1	COVER - WELDED ASSY. (LEFT)
10	2	25152	HOSE - 37" 4' EXT. LONG LEG 4FX - 6FX	36	2	25157	TUBING CLAMP PLATE - (REMOVEABLE)
9	2	25061	HOSE - 25-3/8" LONG LEG 4FX - 4FX	35	6	25070	SPACER - HYD LEG COVERS (LEFT & RIGHT)
8	2	H6801LL- 0404	90DEG LONG ELBOW 4MO - 4MJ	34	12	14883	GROMMET - FOR HYD TUBING
7	2	H6400 - 0406	CONNECTOR 6MO - 4MJ	33	1	25077	NUT BAR - RETAINER
▲ 6	2	H6602 - 040404	TEE 4MJ-4FJX-4MJ (SWVL. NUT RUN TEE)	32	8	!HHCS06311150-8	HHCS 5/8-11 X 1-1/2" LONG GRADE 8
5	2	H6801- 0406	90DEG STD ELBOW 6MO - 4MJ	31	8	!LNUT-06311-8	NYLON LOCK NUT GRADE 8
4	2	H2404 - 0608	ADAPTER 6MJ - 8MP	30	4	!HHCS03816063	HHCS 3/8-16 X 5/8" LONG GRADE 5
3	2	H6565 - 0606	COUPLING SWIVEL 6FJX-6FJX	29	4	!LWSH-038	LOCK WASHER, 3/8
2	2	H6801L- 0606	90DEG LONG ELBOW 6MO-6MJ	28	4	!FWSH-038	FLAT WASHER, 3/8
1	1	25142	HOSE & FITTING KIT - COMPLETE	27	4	!HHCS03118075	HHCS 5/16-18 X 3/4" LONG GRADE 5
ITEM	QTY	PART NUMBER	DESCRIPTION	ITEM	QTY	PART NUMBER	DESCRIPTION



MANUFACTURING, INC.
CINCINNATI, OHIO

TITLE

REPL. PARTS DWG & LIST (PAGE 2 OF 2)

DATE

08-15-12D

SECTION

C400

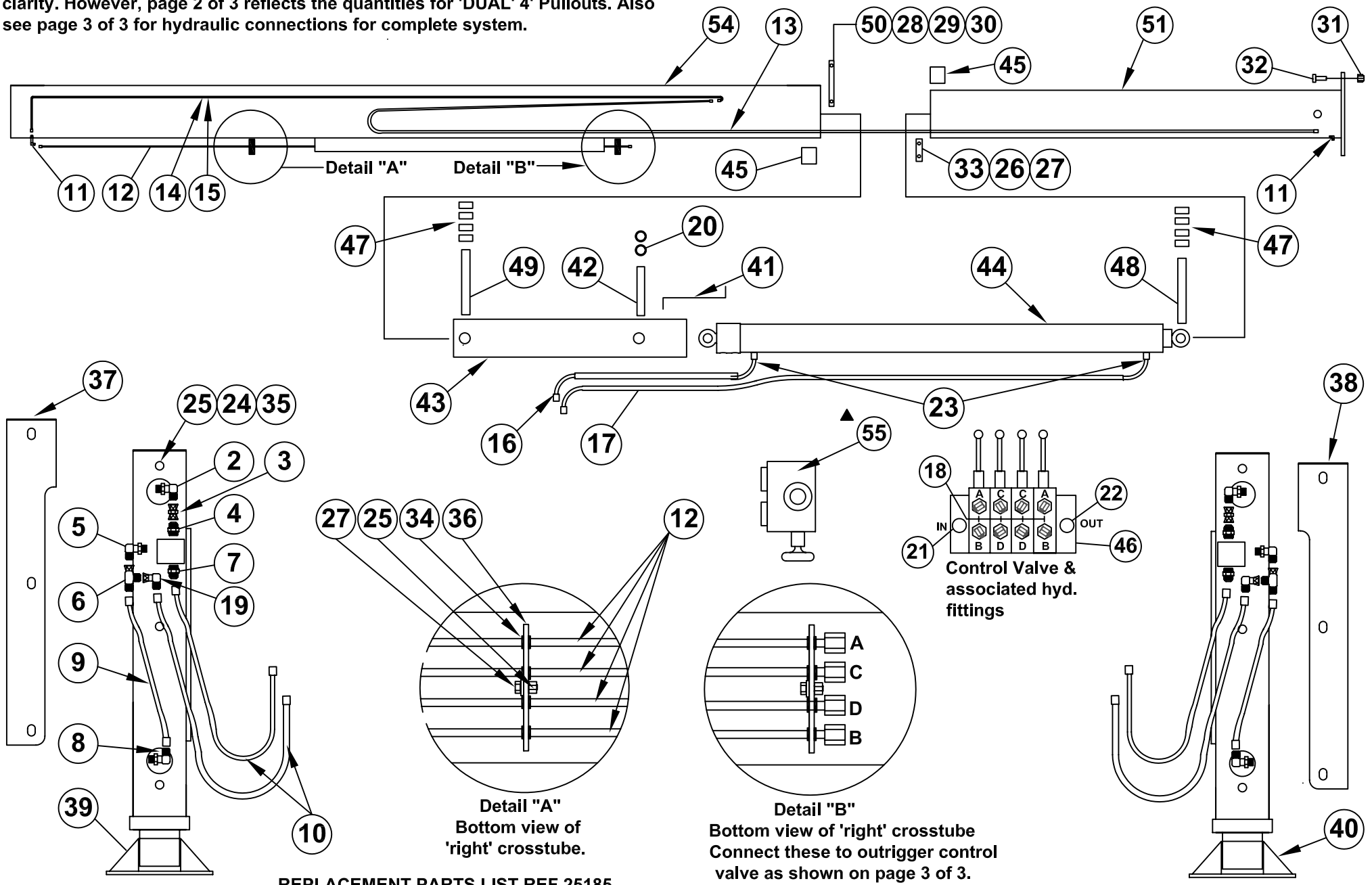
SUPERSEDES

9-14-10C

25162

25100-PHX STABILIZERS w/HYD LONG LEGS

NOTE: Only 'ONE' Crosstube & 4' Pullout assembly (right side) is shown for clarity. However, page 2 of 3 reflects the quantities for 'DUAL' 4' Pullouts. Also see page 3 of 3 for hydraulic connections for complete system.



REPLACEMENT PARTS LIST REF 25185



TITLE
REPL. PARTS DWG & LIST (PAGE 1 OF 3)

25100-PHX 'DUAL' O.R. w/HYD LONG LEGS

DATE 7-8-10A	SECTION C400
SUPERSEDES 6-18-09	25184

				55	1	27740	SELECTOR VALVE, CRANE & O.R.
				54	1	25085-5	CROSSTUBE WELDED ASSY. DUAL PHX (RT)
				53	2	24964	DECAL, HYD LEG CRUSH FOOT (NOT SHOWN)
26	2	!LWSH-031	LOCK WASHER 5/16, SPLIT	52	1	25085-4	CROSSTUBE WELDED ASSY. DUAL PHX (LT)
25	8	!LNUT-03118	LOCK NUT, NYLON 5/16-18	51	2	25087-2	4' PULLOUT WELDED ASSY.
24	6	!FWSH-031	FLAT WASHER, 5/16	50	4	25065	NUT BAR RETAINER
23	2	H6400-0408	CONNECTOR 4MJ - 8MO	49	2	25051	PIN - BASE END EXT CYLINDER
22	1	H6400 - 0810	HYD TUBE ADAPTER 8MJ -10MO	48	2	25052	PIN - ROD END EXT CYLINDER
21	1	H6400 - 0808	HYD TUBE ADAPTER 8MJ - 8MO	47	16	00210	SHAFT COLLAR
20	4	!SRNG-075	SNAP-RING 3/4" PLATED	46	1	22555	3 SPOOL VALVE BLOCK
19	2	H6500 - 0404	90DEG ELBOW - 4MJ - 4FX	45	4	25081	UHMW PAD - FOR CROSSTUBE AND PULLOUT
18	8	H6400 - 0608	CONNECTOR 6MJ - 8MO	44	2	25086	EXTENSION CYLINDER
17	2	25155	HYD HOSE EXT CYL (ROD END)	43	2	25088	EXTENSION TUBE - FOR EXTENSION CYLINDER
16	2	25154	HYD HOSE EXT CYL (BASE END)	42	2	25049	PIN - CONNECTS EXT CYL WITH EXT TUBE
15	2	25137	HYD TUBE ASSY. RT. (UP/DWN LEG)	41	6	25080	SHIM - FORMED
14	2	25136	HYD TUBE ASSY. LT. (UP/DWN LEG)	40	1	25084-2	HYD LONG LEG WELDED ASSY (RIGHT)
13	4	25149	HOSE - 80" INTERN. XTUBE UP/DWN LEG	39	1	25084-1	HYD LONG LEG WELDED ASSY (LEFT)
12	4	25138	HYD TUBE ASSY. XOVER ASSY. 60" LG	38	1	25068-2	COVER - WELDED ASSY. (RIGHT)
11	12	H2701- 0606	90DEG BULKHEAD 6MJ - 6MJ	37	1	25068-1	COVER - WELDED ASSY. (LEFT)
10	4	25152	HOSE - 37" LONG 4FX - 6FX, LONG LEG	36	2	25157	TUBING CLAMP PLATE - (REMOVEABLE)
9	2	25063	HOSE - 16" RETURN (LEG) 4FX - 4FX	35	6	25070	SPACER - HYD LEG COVERS (LEFT & RIGHT)
8	2	H6801LL- 0404	90DEG LONG ELBOW 4MO - 4MJ	34	8	14883	GROMMET - FOR HYD TUBING
7	2	H6400 - 0406	CONNECTOR 6MO - 4MJ	33	2	25077	NUT BAR - RETAINER
6	2	H6602 - 040404	TEE 4MJ-4FJX-4MJ (SWVL. NUT RUN TEE)	32	8	!HHCS06311150-8	HHCS 5/8-11 X 1-1/2" LONG GRADE 8
5	2	H6801- 0406	90DEG STD ELBOW 6MO - 4MJ	31	8	!LNUT-06311-8	NYLON LOCK NUT GRADE 8
4	2	H2404 - 0608	ADAPTER 6MJ - 8MP	30	8	!HHCS03816063	HHCS 3/8-16 X 5/8" LONG GRADE 5
3	2	H6565 - 0606	COUPLING SWIVEL 6FJX-6FJX	29	8	!LWSH-038	LOCK WASHER, 3/8
2	2	H6801L- 0606	90DEG LONG ELBOW 6MO-6MJ	28	8	!FWSH-038	FLAT WASHER, 3/8
1	1	25182	HOSE & FITTING KIT - COMPLETE	27	2	!HHCS03118075	HHCS 5/16-18 X 3/4" LONG GRADE 5
ITEM	QTY	PART NUMBER	DESCRIPTION	ITEM	QTY	PART NUMBER	DESCRIPTION

REPLACEMENT PARTS DWG REF 25184



MANUFACTURING, INC.
CINCINNATI, OHIO

TITLE

REPL. PARTS DWG & LIST (PAGE 2 OF 3)

25100-PHX 'DUAL' O.R. w/HYD LONG LEGS

DATE

08-15-12C

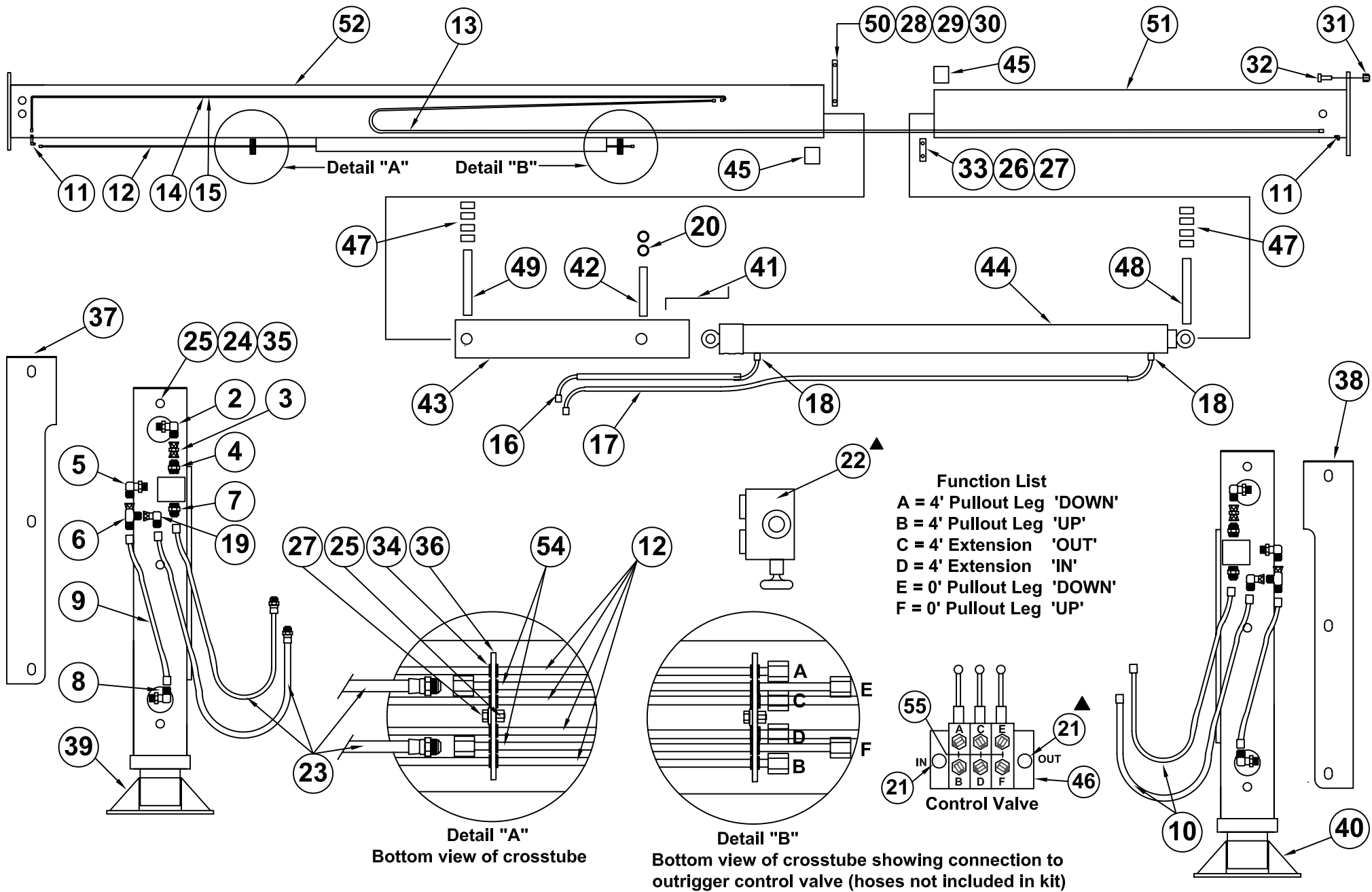
SUPERSEDES

09-14-10B

SECTION

C400

25185



				55	6	H6400-0608	CONNECTOR 6MJ - 8MO
				54	2	25139	HYD TUBE ASSY. XOVER ASSY. 47" LG
				53	2	24964	DECAL, HYD LEG CRUSH FOOT (NOT SHOWN)
26	2	!LWSH-031	LOCK WASHER 5/16, SPLIT	52	1	25085-2	CROSSTUBE WELDED ASSY. PHX
25	8	!LNUT-03118	LOCK NUT, NYLON 5/16-18	51	1	25087-2	4' PULLOUT WELDED ASSY.
24	6	!FWSH-031	FLAT WASHER, 5/16	50	2	25065	NUT BAR RETAINER
23	2	25151	HOSE - 47" 0' EXT. SHORT LEG 4FX - 6MJ	49	1	25051	PIN - BASE END EXT CYLINDER
22	1	27740	SELECTOR VALVE, CRANE & O.R.	48	1	25052	PIN - ROD END EXT CYLINDER
21	2	H6400 - 0808	HYD TUBE ADAPTER 8MJ - 8MO	47	8	00210	SHAFT COLLAR
20	2	!SRNG-075	SNAP-RING 3/4" PLATED	46	1	25050	3 SPOOL VALVE BLOCK
19	2	H6500 - 0404	90DEG ELBOW - 4MJ - 4FX	45	2	25081	UHMW PAD - FOR CROSSTUBE AND PULLOUT
18	2	H6400 - 0408	CONNECTOR 4MJ - 8MO	44	1	25086	EXTENSION CYLINDER
17	1	25155	HYD HOSE EXT CYL (ROD END)	43	1	25088	EXTENSION TUBE - FOR EXTENSION CYLINDER
16	1	25154	HYD HOSE EXT CYL (BASE END)	42	1	25049	PIN - CONNECTS EXT CYL WITH EXT TUBE
15	1	25137	HYD TUBE ASSY. RT.(UP/DWN LEG)	41	3	25080	SHIM - FORMED
14	1	25136	HYD TUBE ASSY. LT.(UP/DWN LEG)	40	1	25083-2	HYD SHORT LEG WELDED ASSY (RIGHT)
13	2	25149	HOSE - 80" INTERN. XTUBE UP/DWN LEG	39	1	25083-1	HYD SHORT LEG WELDED ASSY (LEFT)
12	4	25138	HYD TUBE ASSY. XOVER ASSY. 60" LG	38	1	25069-2	COVER - WELDED ASSY. (RIGHT)
11	6	H2701- 0606	90DEG BULKHEAD 6MJ - 6MJ	37	1	25069-1	COVER - WELDED ASSY. (LEFT)
10	2	25147	HOSE - 27" 4' EXT. SHORT LEG 4FX - 6FX	36	2	25157	TUBING CLAMP PLATE - (REMOVEABLE)
9	2	25063	HOSE - 16" RETURN (LEG) 4FX - 4FX	35	6	25070	SPACER - HYD LEG COVERS (LEFT & RIGHT)
8	2	H6801LL- 0404	90DEG LONG ELBOW 4MO - 4MJ	34	12	14883	GROMMET - FOR HYD TUBING
7	2	H6400 - 0406	CONNECTOR 6MO - 4MJ	33	1	25077	NUT BAR - RETAINER
6	2	H6602 - 040404	TEE 4MJ-4FJX-4MJ(SWVL. NUT RUN TEE)	32	8	!HHCS06311150-8	HHCS 5/8-11 X 1-1/2" LONG GRADE 8
5	2	H6801- 0406	90DEG STD ELBOW 6MO - 4MJ	31	8	!LNUT-06311-8	NYLON LOCK NUT GRADE 8
4	2	H2404 - 0608	ADAPTER 6MJ - 8MP	30	4	!HHCS03816063	HHCS 3/8-16 X 5/8" LONG GRADE 5
3	2	H6565 - 0606	COUPLING SWIVEL 6FJX-6FJX	29	4	!LWSH-038	LOCK WASHER, 3/8
2	2	H6801L- 0606	90DEG LONG ELBOW 6MO-6MJ	28	4	!FWSH-038	FLAT WASHER, 3/8
1	1	25141	HOSE & FITTING KIT - COMPLETE	27	4	!HHCS03118075	HHCS 5/16-18 X 3/4" LONG GRADE 5
ITEM	QTY	PART NUMBER	DESCRIPTION	ITEM	QTY	PART NUMBER	DESCRIPTION



MANUFACTURING, INC.
CINCINNATI, OHIO

TITLE

REPL. PARTS DWG & LIST (PAGE 2 OF 2)

DATE

08-15-12D

SECTION

C400

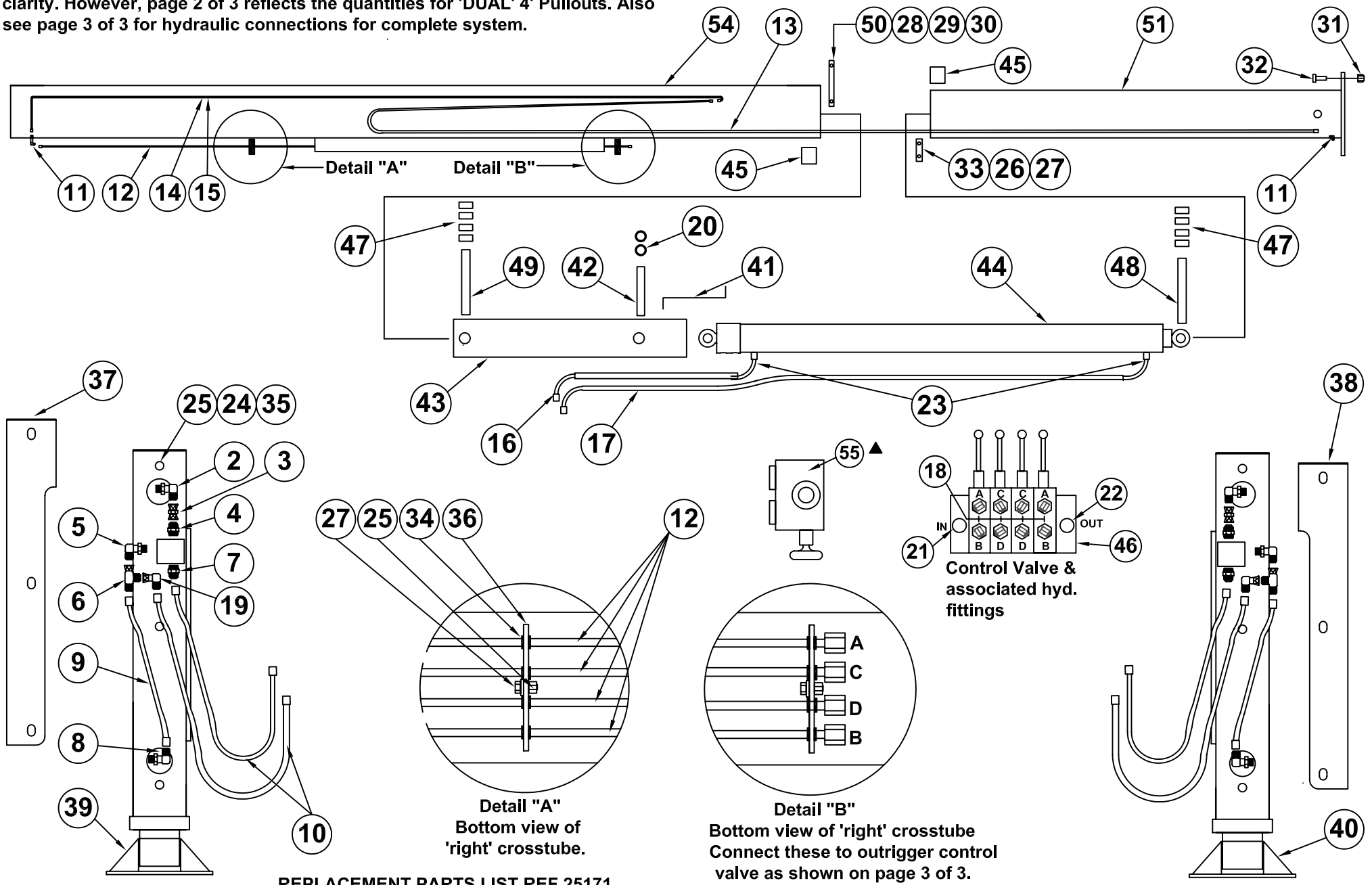
SUPERSEDES

07-08-10C

25161

25100-PHX STABILIZERS w/HYD SHORT LEGS

NOTE: Only 'ONE' Crosstube & 4' Pullout assembly (right side) is shown for clarity. However, page 2 of 3 reflects the quantities for 'DUAL' 4' Pullouts. Also see page 3 of 3 for hydraulic connections for complete system.



REPLACEMENT PARTS LIST REF 25171



TITLE
REPL. PARTS DWG & LIST (PAGE 1 OF 3)

25100-PHX 'DUAL' O.R. w/HYD SHORT LEGS

DATE
7-8-10A

SUPERSEDES
3-24-09

SECTION
C400

25170

				55	1	27740	SELECTOR VALVE, CRANE & O.R.
				54	1	25085-5	CROSSTUBE WELDED ASSY. DUAL PHX (RT)
				53	2	24964	DECAL, HYD LEG CRUSH FOOT (NOT SHOWN)
				52	1	25085-4	CROSSTUBE WELDED ASSY. DUAL PHX (LT)
26	2	!LWSH-031	LOCK WASHER 5/16, SPLIT	51	2	25087-2	4' PULLOUT WELDED ASSY.
25	8	!LNUT-03118	LOCK NUT, NYLON 5/16-18	50	4	25065	NUT BAR RETAINER
24	6	!FWSH-031	FLAT WASHER, 5/16	49	2	25051	PIN - BASE END EXT CYLINDER
23	2	H6400-0408	CONNECTOR 4MJ - 8MO	48	2	25052	PIN - ROD END EXT CYLINDER
22	1	H6400 - 0810	HYD TUBE ADAPTER 8MJ -10MO	47	16	00210	SHAFT COLLAR
21	1	H6400 - 0808	HYD TUBE ADAPTER 8MJ - 8MO	46	1	22555	3 SPOOL VALVE BLOCK
20	4	!SRNG-075	SNAP-RING 3/4" PLATED	45	4	25081	UHMW PAD - FOR CROSSTUBE AND PULLOUT
19	2	H6500 - 0404	90DEG ELBOW - 4MJ - 4FX	44	2	25086	EXTENSION CYLINDER
18	8	H6400 - 0608	CONNECTOR 6MJ - 8MO	43	2	25088	EXTENSION TUBE - FOR EXTENSION CYLINDER
17	2	25155	HYD HOSE EXT CYL (ROD END)	42	2	25049	PIN - CONNECTS EXT CYL WITH EXT TUBE
16	2	25154	HYD HOSE EXT CYL (BASE END)	41	6	25080	SHIM - FORMED
15	2	25137	HYD TUBE ASSY. RT.(UP/DWN LEG)	40	1	25083-2	HYD SHORT LEG WELDED ASSY (RIGHT)
14	2	25136	HYD TUBE ASSY. LT. (UP/DWN LEG)	39	1	25083-1	HYD SHORT LEG WELDED ASSY (LEFT)
13	4	25149	HOSE - 80" INTERN. XTUBE UP/DWN LEG	38	1	25069-2	COVER - WELDED ASSY. (RIGHT)
12	4	25138	HYD TUBE ASSY. XOVER ASSY. 60" LG	37	1	25069-1	COVER - WELDED ASSY. (LEFT)
11	12	H2701- 0606	90DEG BULKHEAD 6MJ - 6MJ	36	2	25157	TUBING CLAMP PLATE - (REMOVEABLE)
10	4	25147	HOSE - 27" 4' EXT SHORT LEG 4FX - 6FX	35	6	25070	SPACER - HYD LEG COVERS (LEFT & RIGHT)
9	2	25063	HOSE - 16" RETURN (LEG) 4FX - 4FX	34	8	14883	GROMMET - FOR HYD TUBING
8	2	H6801LL- 0404	90DEG LONG ELBOW 4MO - 4MJ	33	2	25077	NUT BAR - RETAINER
7	2	H6400 - 0406	CONNECTOR 6MO - 4MJ	32	8	!HHCS06311150-8	HHCS 5/8-11 X 1-1/2" LONG GRADE 8
▲ 6	2	H6602 - 040404	TEE 4MJ-4FJX-4MJ (SWVL. NUT RUN TEE)	31	8	!LNUT-06311-8	NYLON LOCK NUT GRADE 8
5	2	H6801- 0406	90DEG STD ELBOW 6MO - 4MJ	30	8	!HHCS03816063	HHCS 3/8-16 X 5/8" LONG GRADE 5
4	2	H2404 - 0608	ADAPTER 6MJ - 8MP	29	8	!LWSH-038	LOCK WASHER, 3/8
3	2	H6565 - 0606	COUPLING SWIVEL 6FJX-6FJX	28	8	!FWSH-038	FLAT WASHER, 3/8
2	2	H6801L- 0606	90DEG LONG ELBOW 6MO-6MJ	27	2	!HHCS03118075	HHCS 5/16-18 X 3/4" LONG GRADE 5
1	1	25173	HOSE & FITTING KIT - COMPLETE				
ITEM	QTY	PART NUMBER	DESCRIPTION	ITEM	QTY	PART NUMBER	DESCRIPTION

REPLACEMENT PARTS DWG REF 25170



MANUFACTURING, INC.
CINCINNATI, OHIO

TITLE

REPL. PARTS DWG & LIST (PAGE 2 OF 3)

DATE

08-15-12B

SECTION

C400

25100-PHX 'DUAL' O.R. w/HYD SHORT LEGS

SUPERSEDES

07-08-10A

25171



VENTURO CRANES LIMITED WARRANTY POLICY

Venturo products are built to last...we guarantee them.

As a purchaser of any new Venturo product covered by warranty, you will receive 1 year of the most complete coverage available...and, at no added cost to you.

1-Year Limited Warranty Policy

This limited policy warrants new products of Venturo to be free from defects in material and workmanship for a period of one (1) year from date of original installation. OEM products or accessories purchased by Venturo as part of or offered with our product will carry the OEM manufacturer's respective warranty. Our warranty covers:

- ***Repair or replacement of product***
- ***Labor to repair or replace product***
- ***Freight to return and/or replace product***

We shall not be liable for any contingent liabilities arising out of the improper function of any products. Warranty shall become void if the product is improperly installed, modified, damaged, abused or used for application other than intended use. There is no warranty of merchantability, fitness for a particular purpose, warranty arising from course of dealing or usage of trade, or any other implied or expressed warranty, except as made specifically herein. This warranty supersedes all previous warranties, written or implied.

Warranty Claims

Venco Venturo Industries LLC will make a good faith effort for prompt correction or other adjustment with respect to any product, which proves to be defective after our inspection and within the warranty period. Before any repairs are attempted or before returning any product, your Venturo Distributor is required to obtain a warranty claim number. This number is necessary for any claim to be considered. To obtain a warranty claim number, Venturo requires the model and serial number. Only authorized Venturo Distributors can perform warranty. For the name and address of your local Venturo Distributor call the **Warranty Claim Department - 513-772-8448**.

WARNING - It is the responsibility of the installer to ensure the installation is completed according to the manufacturer's recommendations, ensure the ultimate user understands how to operate product in a safe manner, and understands the need for regular service and maintenance by an authorized Venturo Distributor. No modifications or alterations may be made to any Venturo product without the expressed written consent of Venco Venturo Industries LLC. Installation of any Venturo product must be done by an authorized Venturo Distributor, to the standards of the industry; including maintenance, service and affixing of all instruction, safety and warning decals. Users should be instructed as to the safe operation at time of delivery. Maintenance, service, operation and safety warning decals are available on request from Venco Venturo Industries LLC.

VENCO VENTURO INDUSTRIES LLC
12110 BEST PLACE | CINCINNATI, OHIO 45241
P: 800-226-2238 | F: 513-326-5427
www.venturo.com