

PARTS & INSTALLATION MANUAL

ET25KX

Included in this manual:

ET25KX(P)

- 5,000 lbs Electric Telescopic Service Crane
- 10-16 ft Powered w/ 16-20 ft Manual, Single-Stage Boom Extension

VENCO VENTURO INDUSTRIES LLC
12110 BEST PLACE | CINCINNATI, OHIO 45241
800-226-2238



This manual also available online at www.venturo.com.

ET25KX(P)

INST-21890 - 6/30/2025 (Rev: NEW0)

7607100A	DESCRIPTION & SPECIFICATIONS
21891a	SPECIFICATIONS & OPERATING FEATURES
21891b	SPECIFICATIONS & OPERATING FEATURES
21892	INSTALLATION DIMENSIONS; ET25KX
21080	MOUNTING DIMENSIONS; BASE PLATE
21893	CAPACITY CHART; ET25KX(P) W/ 10-16-20 FT. BOOM
7607150A	SAFETY
850711	SAFETY & HAZARDS - GENERAL
850712	SAFETY & HAZARDS - CONTINUED
15394	VEHICLE & CRANE ELECTRICAL HAZARD INFORMATION
21353	SAFETY DECALS
21384	SAFETY DECALS
21354	DECALS FOR ET CRANES
21895	MODEL & CAPACITY DECALS
7607200A	INSTALLATION
711105	CABLE & BATTERY REQUIREMENTS - ET & HT CRANES
15660	BATTERY CABLE INSTALLATION DRAWING
19961	IN-COMPARTMENT CONTROLS INSTALLATION
22245	WIRE ROPE INSTALLATION
7607300A	MAINTENANCE & SERVICE
21878	LUBRICATION & MAINTENANCE CHART
19963	MINIMUM VOLTAGE TEST
7607400A	REPLACEMENT PARTS
21896	REPLACEMENT PARTS DRAWING; ET25KX MECH
21897	REPLACEMENT PARTS LIST; ET25KX MECH
21198	REPLACEMENT PARTS DWG; 27198 BOOM (SINGLE-STAGE)
21199	REPLACEMENT PARTS LIST; 27198 BOOM (SINGLE-STAGE)
21880	A2B REPLACEMENT PARTS DRAWING
21881	A2B REPLACEMENT PARTS LIST
21776	REPLACEMENT PARTS DRAWING; 23154-2 ELECTRICAL COMPONENT
21859	WIRING DIAGRAM
21292	REPLACEMENT PARTS LIST; 16780 SINGLE / 2-POLE SLIP RING
21293	REPLACEMENT PARTS DRAWING; 16780 SINGLE / 2-POLE SLIP RING
22076	22060 PENDANT; REPLACEMENT PARTS DRAWING / LIST (4 FUNCTION)
21758	REPLACEMENT PARTS DRAWING; HYDRAULIC SYSTEM COMPONENTS (NON-PROP)
20156	HYDRAULIC SYSTEM SCHEMATIC (NON-PROPORTIONAL)
21879	REPLACEMENT PARTS DWG; 20061 SINGLE-STAGE EXT. CYL. W/ SEAL KIT INFO
21773	REPLACEMENT PARTS DRAWING; 21752 ELEVATION CYLINDER W/ SEAL KIT INFO
21053	REPLACEMENT PARTS DRAWING; 19813 WINCH
21886	REPLACEMENT PARTS DRAWING; 21418 SLEWING RING
21894	DECAL PLACEMENT
21899	FIELD SERVICE LABEL KIT; (ET25/30/36KX)

12-00073_VNT1 WARRANTY PAGE

SECTION 100

DESCRIPTION

&

SPECIFICATIONS



VENCO VENTURO INDUSTRIES LLC
CINCINNATI, OHIO

SPECIFICATIONS AND OPERATING FEATURES

ET25KX-10/20

SPECIFICATIONS

12 VOLT BATTERY OPERATED

25,000 FT-LBS OVERTURNING MOMENT (Or as limited by truck stability)

MOMENT OVERLOAD SYSTEM

TELESCOPIC BOOM	10 / 20
BOOM HYD ELEVATION	-8° TO 75°
BOOM HYD EXT	10 - 16 FT
BOOM MANUAL EXT	4 FT
CAPACITY	1250 LBS @ 20 FT REACH
	5000 LBS @ 3 TO 5 FT REACH
WIRE ROPE	5/16" DIA x 80 FT
PENDANT CORD LENGTH	25 FT

WINCH - 2500 LBS SINGLE LINE CAPACITY
With Automatic Load Brake

ELECTRIC HYDRAULIC BOOM ELEVATION

ELECTRIC HYDRAULIC BOOM EXTENSION & RETRACTION - 6 FT STROKE

360° CONTINUOUS

REMOTE CONTROL PENDANT

25 ft Straight Cord with Four Environmentally Sealed Toggle Switches Protected by a Guard

MASTER DISCONNECT SWITCH

OUTRIGGERS AVAILABLE

Side Bracket Type Outriggers

Fold Away Type Outriggers

Pullout Type Outrigger System



MFG., INC.
CINCINNATI, OHIO

TITLE
INSTALLATION DWG

ET25KX-10/20

DATE
10-9-09

SUPERCEDES
-

SECTION
C120

21891a

OVERLOAD SENSING SYSTEM

This crane is equipped with an Overload Sensing System. If the capacity of the crane is exceeded, the "Winch Up", "Boom Down", and "Boom Out" functions will be shut down. The "Winch Down", "Boom Up", and "Boom In" functions will continue to operate and can be used to relieve the overload condition. The "Rotation" function also will continue to operate.

CONTROL PRIORITY SYSTEM

The design intent of the electrical and hydraulic system is such that some functions can be operated simultaneously, while others are meant to be operated individually. To summarize the control system see the explanations below.

- Winch up takes priority over all functions.
- Winch Down can be operated with any other single function.
- Hydraulic functions (Rotation Right, Rotation Left, Boom Up, Boom Down, Boom Out and Boom In) are designed to function one at a time.

CABLE DRUM AND SHEAVE DIAMETERS

The drum on the ET25KX is 5-5/16" in diameter which provides the first layer wire rope pitch diameter 18 times the rope diameter as required by ANSI B30.5 Cranes Standards. The cable sheaves are either 16 (snatch block) or 18 (boom) times the cable diameter which likewise conforms.

MISCELLANEOUS

A. CAPACITY INDICATOR

Select boom reach and angle allowable for load by using capacity indicator arrow and chart on either side of boom.

B. BATTERY HOOKUP

A parallel auxiliary battery should be installed near the crane as shown on Dwg. 19947 under "RECOMMENDED INSTALLATION". The parallel auxiliary battery minimum rating should be 450 Cold Cranking Amps (at 0° F) and 100 reserve capacity, or 78 plates and 70 amp hours.



MFG., INC.
CINCINNATI, OHIO

TITLE
INSTALLATION DWG

ET25KX-10/20

DATE
10-9-09

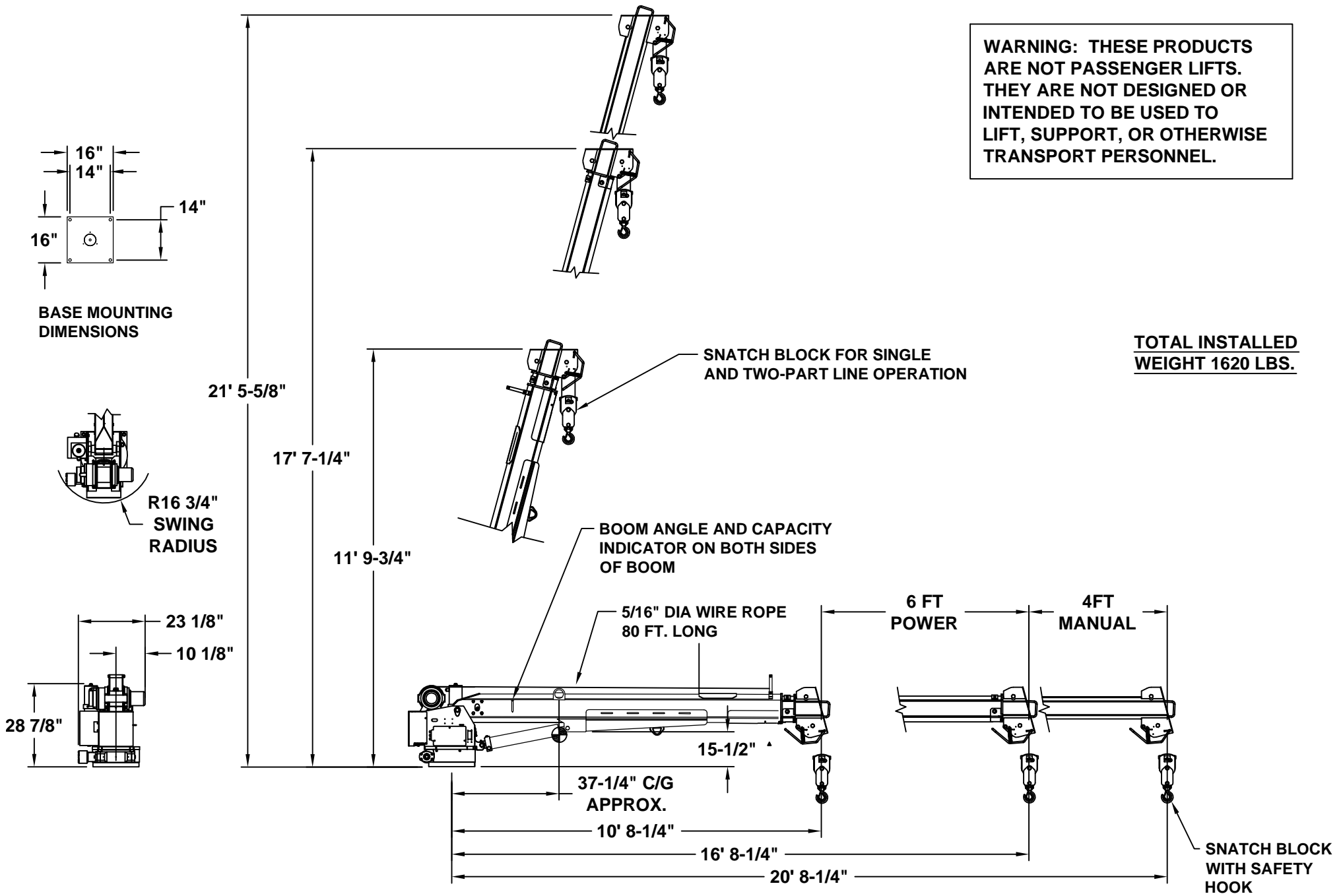
SUPERCEDES
-

SECTION
C120

21891b

**WARNING: THESE PRODUCTS
ARE NOT PASSENGER LIFTS.
THEY ARE NOT DESIGNED OR
INTENDED TO BE USED TO
LIFT, SUPPORT, OR OTHERWISE
TRANSPORT PERSONNEL.**

**TOTAL INSTALLED
WEIGHT 1620 LBS.**



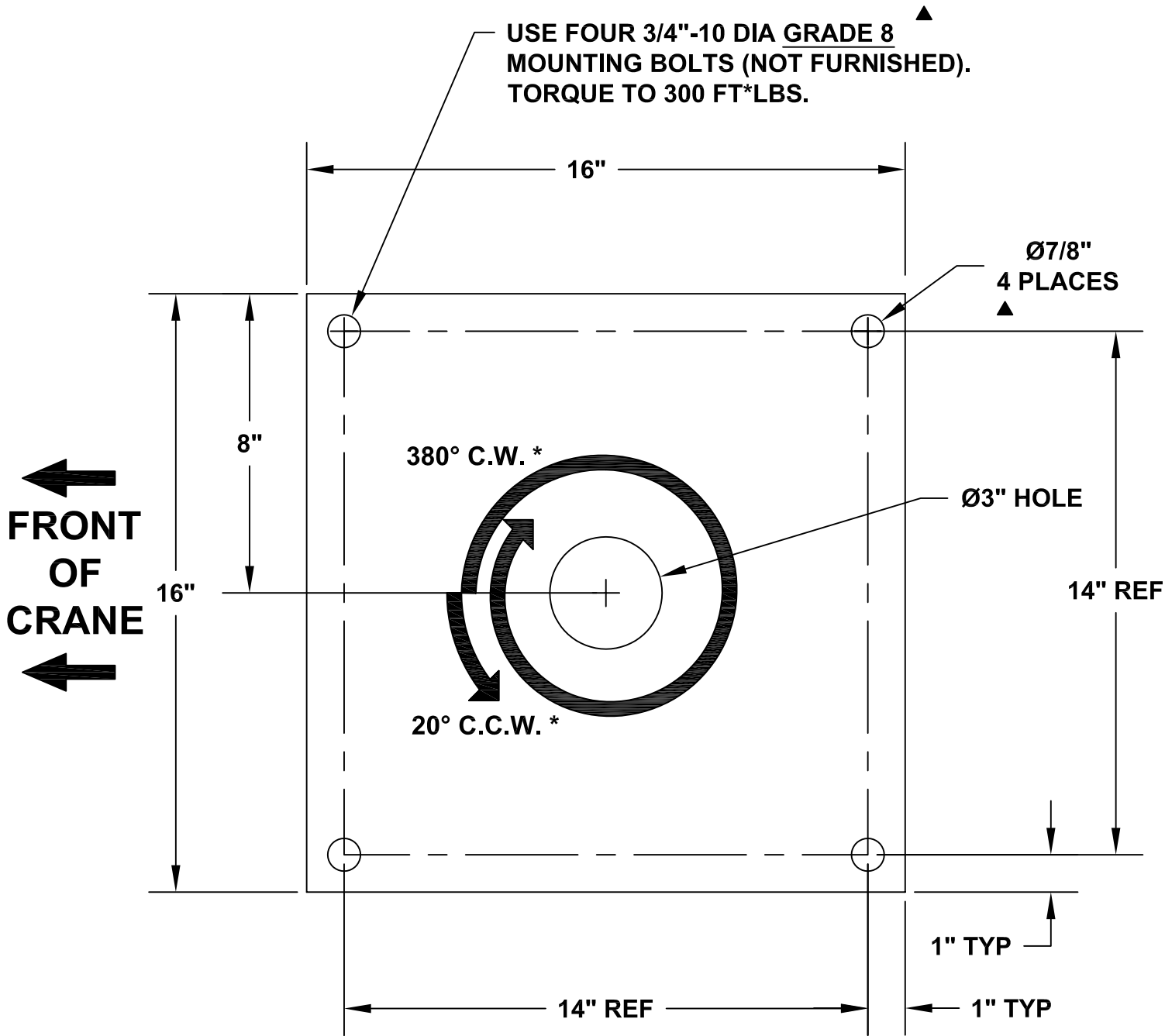
MANUFACTURING, INC.
CINCINNATI, OHIO

TITLE
INSTALLATION DRAWING
ET25KX - 10/16/20 BOOM

DATE
09-08-16A
SUPERSEDES
10-09-09

SECTION
C100
21892

ET/HT25/30/36KX BASE MOUNTING DIMENSIONS



* Rotation limits typically apply to HT cranes only. ET cranes generally have continuous rotation.



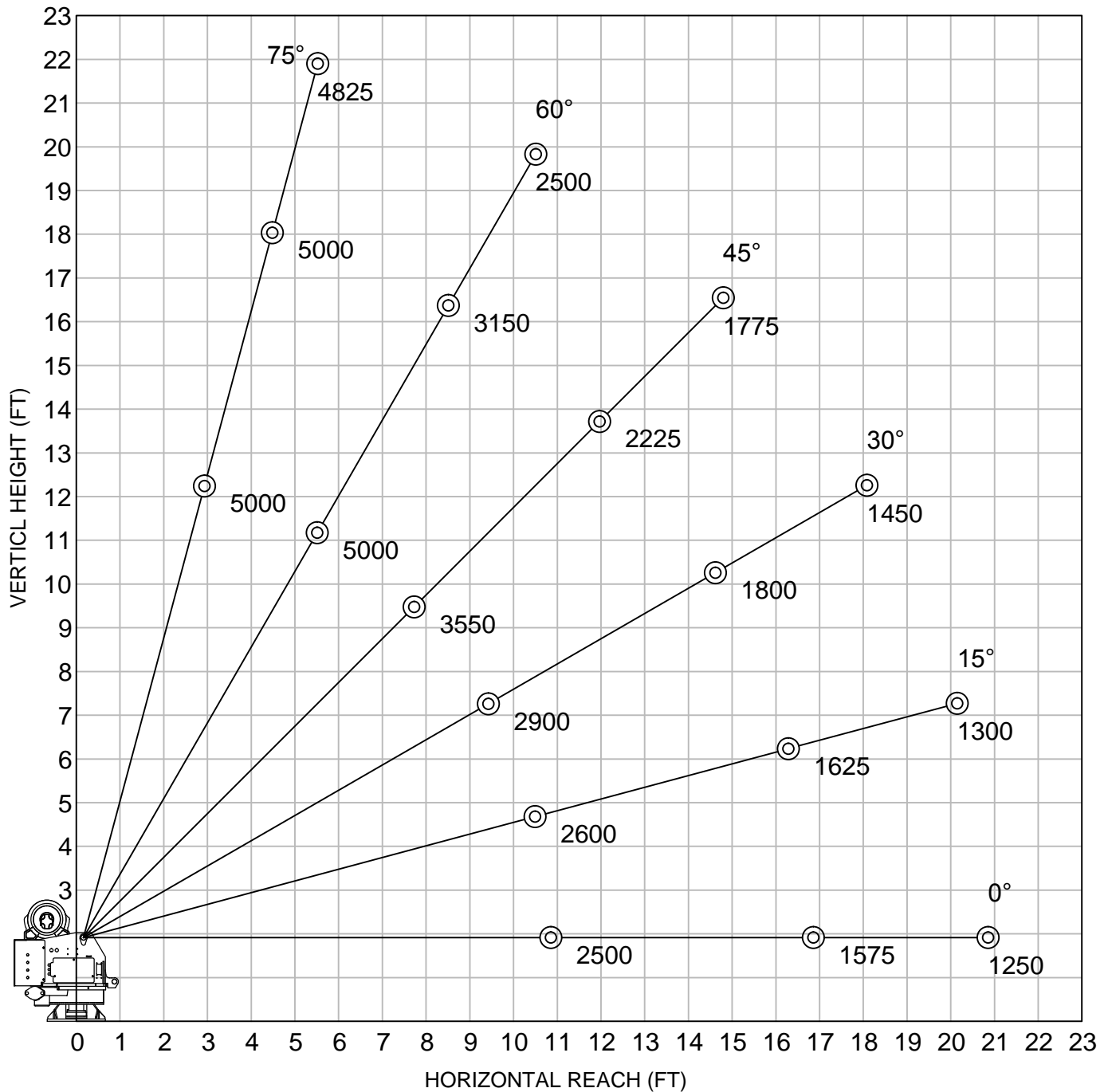
MFG., INC.
CINCINNATI, OHIO

TITLE	DATE	SECTION
BASE MOUNTING	02-13-12E	C100
ET/HT25/30/36	SUPERSEDES 12-14-11D	21080

ET/HT25KX, 10'-16'-20' BOOM

▲ CRANE SERIAL NUMBER: _____

MAXIMUM LOAD CAPACITY CHART



WEIGHT OF LOAD HANDLING DEVICES ARE PART OF THE LOAD AND MUST BE DEDUCTED FROM THE GROSS CAPACITY.

LOAD BLOCK USAGE

1 PART LINE FOR LOADS LESS THAN 2500 LBS

2 PART LINE FOR LOADS OF 2500 LBS AND GREATER

WEIGHT OF LOAD BLOCK = 34 LBS



VENCO VENTURO INDUSTRIES LLC
CINCINNATI, OHIO

TITLE

MAXIMUM LOAD CAPACITY

ET/HT25KX, 10'-16'-20' BOOM

DATE

05-03-16C

SUPERSEDES

04-30-13B

SECTION

C100

21893

SECTION 150

SAFETY



VENCO VENTURO INDUSTRIES LLC
CINCINNATI, OHIO

CRANE SAFETY AND HAZARDS

CAUTIONS

1. INSPECT VEHICLE AND CRANE, INCLUDING OPERATION, PRIOR TO USE DAILY.
2. DO NOT USE THIS EQUIPMENT EXCEPT ON FIRM LEVEL GROUND WITH CRANE MOUNTED ON FACTORY-RECOMMENDED TRUCK.
3. BEFORE OPERATING THE CRANE, REFER TO MAXIMUM LOAD (CAPACITY) CHART ON CRANE FOR OPERATING (LOAD) LIMITATIONS.
4. DO NOT OPERATE, WALK, OR STAND BENEATH BOOM OR A SUSPENDED LOAD.
5. ATTACH PENDANT CORD SUPPORT SNAP TO ATTACHMENT POINT BEFORE PLUGGING IN PENDANT, IF SO EQUIPPED.
6. UNPLUG PENDANT AND SHUT OFF MASTER DISCONNECT SWITCH WHEN CRANE IS NOT IN USE.
7. FOR TRAVEL, BOOM MUST BE IN STOWED POSITION.

DANGER

- THIS CRANE IS NOT A PASSENGER LIFT
- IT IS NOT DESIGNED OR INTENDED TO BE USED TO LIFT, SUPPORT, OR OTHERWISE TRANSPORT PERSONNEL.

YOU MUST NOT OPERATE THIS CRANE, UNLESS:

1. YOU HAVE BEEN TRAINED IN THE SAFE OPERATION OF THIS CRANE, AND
2. YOU KNOW AND FOLLOW THE SAFETY AND OPERATING RECOMMENDATIONS CONTAINED IN THE MANUFACTURER'S MANUALS, YOUR EMPLOYER'S WORK RULES, AND APPLICABLE GOVERNMENT REGULATIONS. AN UNTRAINED OPERATOR SUBJECTS HIMSELF AND OTHERS TO DEATH OR SERIOUS INJURY.

ELECTROCUTION HAZARD

- THIS MACHINE IS NOT INSULATED.
- MAINTAIN SAFE CLEARANCES FROM ELECTRICAL LINES AND APPARATUS.
- YOU MUST ALLOW FOR BOOM SWAY, ROCK, OR SAG, AND ELECTRICAL LINE AND LOAD-LINE SWAYING
- THIS LIFTING DEVICE DOES NOT PROVIDE PROTECTION FROM CONTACT WITH OR PROXIMITY TO AN ELECTRICALLY CHARGED CONDUCTOR.
- YOU MUST MAINTAIN A CLEARANCE OF AT LEAST 10 FEET BETWEEN ANY PART OF THE CRANE, LOAD-LINE, OR LOAD, AND ANY ELECTRICAL LINE OR APPARATUS CARRYING UP TO 50,000 VOLTS. REFER TO DRAWING 15394 FOR ADDITIONAL INFORMATION.
- **DEATH OR SERIOUS INJURY** WILL RESULT FROM CONTACT OR INADEQUATE CLEARANCES.

OVERLOAD SENSING SYSTEM - STANDARD ON ALL CRANES

1. IF OVERLOADED, THE WINCH UP, BOOM DOWN, AND (OPTIONAL) BOOM OUT FUNCTIONS WILL AUTOMATICALLY, SHUT OFF TO PREVENT INCREASED OVERLOAD.
2. ON CRANES EQUIPPED WITH AN OPTIONAL OVERLOAD ALARM, IT WILL ALSO SOUND.
3. IF AN OVERLOAD OCCURS, USE THE WINCH DOWN, BOOM UP OR BOOM IN FUNCTIONS TO RELIEVE THE OVERLOAD.
4. THE OVERLOAD SENSING SYSTEM IS INOPERATIVE IF THE BOOM ELEVATION IS AT THE BOTTOM OR TOP LIMIT OF TRAVEL. TO RELIEVE THIS CONDITION, RAISE OR LOWER THE BOOM SLIGHTLY BEFORE LIFTING THE LOAD.
5. SEE MANUAL FOR TESTING THE OVERLOAD SYSTEM.

NOTICE - WARRANTY VOID IF DISCONNECTED

THE OVERLOAD SENSING SYSTEM HAS BEEN INSTALLED AS A SAFETY FEATURE TO PROTECT THE EQUIPMENT AND THE OPERATOR.

DO NOT DISCONNECT THIS SYSTEM



VENCO VENTURO INDUSTRIES LLC
CINCINNATI, OHIO

TITLE

SAFETY & HAZARDS

DATE

01-29-15K

SECTION

C150

ELECTRIC CRANES

SUPERSEDES

12-20-13J

850711

CRANE SAFETY AND HAZARDS - CONT'D

OVERLOAD ALARM SYSTEM - OPTIONAL

1. OVERLOAD ALARM HORN SOUNDS IF RATED LOAD IS EXCEEDED AT ANY REACH.
2. IF ALARM SOUNDS, RAISE BOOM OR LOWER WINCH TO REMOVE OVERLOAD.
3. ALWAYS RAISE BOOM SLIGHTLY BEFORE LIFTING LOAD. WARNING SYSTEM INOPERATIVE WHEN CYLINDER IS COMPLETED BOTTOMED.
4. ALARM CAN BE TESTED BY TYING DOWN BOOM WITH WINCH CABLE AND OPERATING BOOM UP OR BY RAISING BOOM AGAINST UP LIMIT STOP.

NOTICE - WARRANTY VOID IF DISCONNECTED

THIS ALARM SYSTEM HAS BEEN INSTALLED AS A SAFETY FEATURE TO PROTECT BOTH THE EQUIPMENT AND THE OPERATOR.

DO NOT DISCONNECT THIS SYSTEM

INTENTIONALLY LEFT BLANK



VENCO VENTURO INDUSTRIES LLC
CINCINNATI, OHIO

TITLE

SAFETY & HZRDS, CONT.

DATE

01-29-15

SECTION

C150

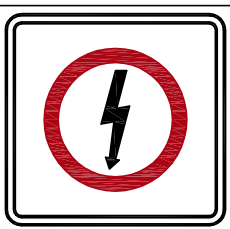
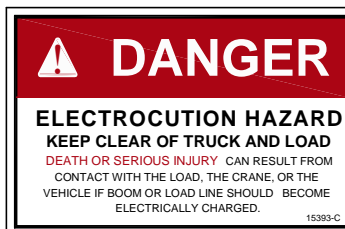
ELECTRIC CRANES

SUPERSEDES

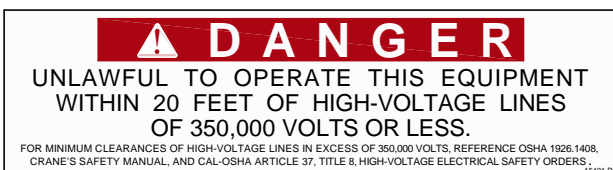
-

850712

VEHICLE & CRANE MOUNTED ELECTRICAL HAZARD SIGN APPLICATION & INFORMATION



SIGN NO. 15393 DISPLAYS THE INTERNATIONAL SYMBOL FOR ELECTRICITY AND WARNS OF DANGER FROM AN ELECTRICALLY CHARGED VEHICLE, CRANE, OR LOAD. FOUR ARE RECOMMENDED (ONE FOR EACH SIDE AND ONE FOR EACH END OF VEHICLE) TO BE APPLIED IN LOCATIONS WHICH ARE READILY VISIBLE TO GROUND PERSONNEL.



SIGN NO. 15401 PROVIDES ADDITIONAL WARNING OF LEGAL REQUIREMENTS WHEN OPERATING NEAR HIGH VOLTAGE LINES. THIS SIGN IS PLACED ON THE CONTROL PENDANT SIDE OF BOOM.

Table A - Minimum Clearance Distances

Voltage (nominal, kV, alternating current)	Minimum clearance distance (feet) *
Up to 50.....	10
over 50 - 200.....	15
over 200 - 350.....	20
over 350 - 500.....	25
over 500 - 750.....	35
over 750 - 1000.....	45
Over 1000.....	(as established by the utility owner/operator or registered professional engineer who is a qualified person with respect to electrical power transmission and distribution).

Table T - Minimum Clearance Distances While Traveling With No Load

Voltage (nominal, kV, alternating current)	While traveling - minimum clearance distance (feet) *
0 - 0.75.....	4
over 0.75 - 50.....	6
over 50 - 345.....	10
over 345 - 750.....	16
over 750 - 1000.....	20
Over 1000.....	(as established by the utility owner/operator or registered professional engineer who is a qualified person with respect to electrical power transmission and distribution).

* NOTE: ENVIRONMENTAL CONDITIONS SUCH AS FOG, SMOKE, OR PRECIPITATION MAY REQUIRE INCREASED CLEARANCES



VENCO VENTURO INDUSTRIES LLC
CINCINNATI, OHIO

TITLE	DATE	SECTION
HAZARD APPS & INFO	02-21-14M	C150
ET/HT CRANES	SUPERSEDES 12-20-13L	15394

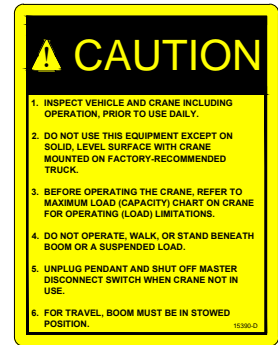
DECAL #: 15390

DESCRIPTION: CAUTION, INSPECT VEHICLE & CRANE...

PURPOSE: TO INFORM THE OPERATOR OF KEY OPERATING REQUIREMENTS.

QUANTITY: 1

PLACEMENT: REAR COVER OR SIDE OF CRANE



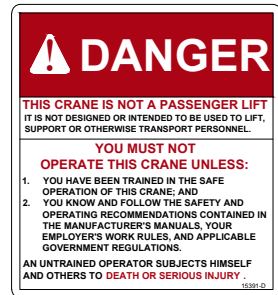
DECAL #: 15391

DESCRIPTION: DANGER, NOT A PASSENGER LIFT

PURPOSE: TO INFORM OPERATOR NOT TO LIFT, SUPPORT, OR TRANSPORT PERSONNEL, AND TO ENSURE OPERATOR IS ADEQUATELY TRAINED.

QUANTITY: 1

PLACEMENT: REAR COVER OR SIDE OF CRANE



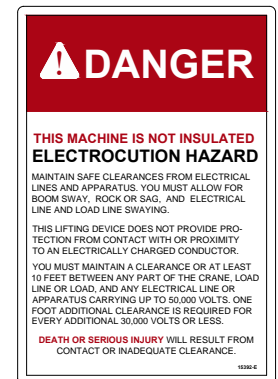
DECAL #: 15392

DESCRIPTION: DANGER, ELECTROCUTION HAZARD, MACHINE (CRANE)

PURPOSE: TO INFORM OPERATOR THAT MACHINE (CRANE) REPRESENTS AN ELECTROCUTION HAZARD SHOULD IT COME CLOSE TO OR IN CONTACT WITH AN ELECTRICAL VOLTAGE SOURCE.

QUANTITY: 1

PLACEMENT: REAR COVER OR SIDE OF CRANE



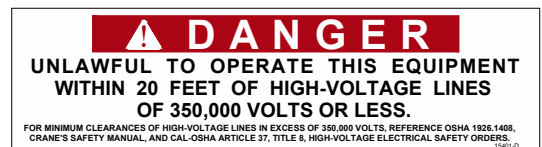
DECAL #: 15401

DESCRIPTION: DANGER, UNLAWFUL TO OPERATE

PURPOSE: TO INFORM OPERATOR OF PROPER OPERATION IN VICINITY OF ELECTRICAL LINES.

QUANTITY: 1

PLACEMENT: RING COVER OR SIDE OF CRANE



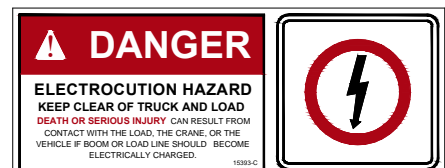
DECAL #: 15393

DESCRIPTION: DANGER, ELECTROCUTION HAZARD, VEHICLE (TRUCK)

PURPOSE: WARNS OF DANGER FROM ELECTRICALLY CHARGED VEHICLE, CRANE, OR LOAD.

QUANTITY: 4

PLACEMENT: EACH SIDE & EACH END OF VEHICLE



VENCO VENTURO INDUSTRIES LLC
CINCINNATI, OHIO

TITLE

SAFETY DECALS

VENTURO CRANES

DATE

04-29-16E

SUPERSEDES

10-24-13D

SECTION

C150

21353

PART NO.: 15513

DECAL: MASTER DISCONNECT SWITCH

FUNCTION: To inform the operator of location and operation of master disconnect switch.

QUANTITY: 1

PLACEMENT: On master disconnect switch bracket.



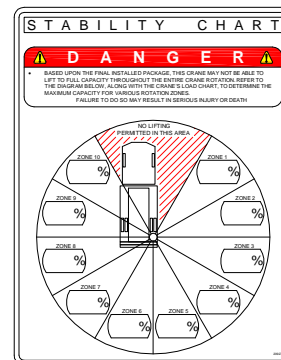
PART NO.: 20927

DECAL: CRANE STABILITY

FUNCTION: To inform the operator of the crane's lifting capacity throughout the entire rotation.

QUANTITY: 1

PLACEMENT: In prominent location, so it is easily seen and readily identifiable.



VENCO VENTURO INDUSTRIES LLC
CINCINNATI, OHIO

TITLE
SAFETY DECALS

CRANES

DATE
06-06-14C

SUPERSEDES
04-02-13B

SECTION
C150

21384

PART NO.: 14473-2

DECAL: CONDUCTIVE GREASE

FUNCTION: To show the operator where to apply grease.

QUANTITY: Varies

PLACEMENT: Near grease fittings.



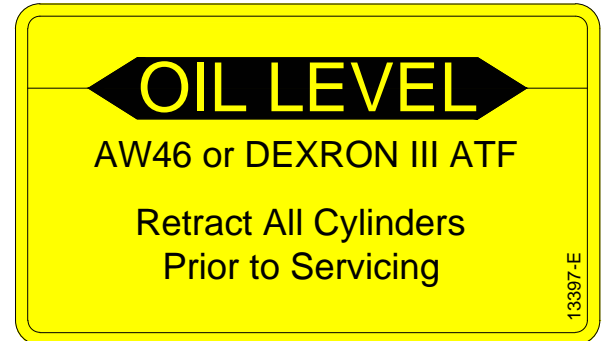
PART NO.: 13397

DECAL: OIL LEVEL

FUNCTION: To inform the operator of proper oil level to maintain.

QUANTITY: 1

PLACEMENT: Side of hydraulic power unit.



PART NO.: 15398

DECAL: UNPLUG REMOTE CONTROL

FUNCTION: To inform the operator to unplug remote control when not in use.

QUANTITY: 1

PLACEMENT: Near pendant socket.



MANUFACTURING, INC.
CINCINNATI, OHIO

TITLE
DECALS

ET CRANES

DATE
11-12-19E

SUPERSEDES
12-23-13D

SECTION
C150

21354

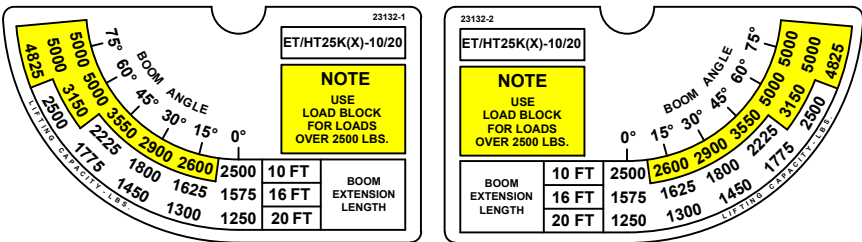
PART NO.: 23132-1 & 23132-2

DECAL: CRANE CAPACITY

FUNCTION: To show the operator the operating capacities of the crane.

QUANTITY: 1 each

PLACEMENT: One on each side of boom.



PART NO.: 19743

DECAL: MODEL NUMBER (ET25KX)

FUNCTION: To show the model of the crane.

QUANTITY: 2

PLACEMENT: One on each side of boom.



PART NO.: 19788-1

DECAL: PROPORTIONAL DECAL

FUNCTION: To show the crane has proportional feature.

QUANTITY: 2

PLACEMENT: One on each side of boom.



SECTION 200

INSTALLATION



VENCO VENTURO INDUSTRIES LLC
CINCINNATI, OHIO

!! IMPORTANT !!

ADEQUATE WIRING IMPERATIVE FOR PROPER OPERATION

1. PROPER GROUND PATH - SEE DWG 15660
2. CURRENT DRAW IS SEVERAL HUNDRED AMPERES - ADEQUATE WIRE SIZE AND BATTERY CAPACITY IS ABSOLUTELY ESSENTIAL (SEE CHART BELOW).

▲ MINIMUM WIRE GAUGE AND AUXILIARY BATTERY SIZE

▲ MINIMUM WIRE GAUGE AND AUXILIARY BATTERY SIZE										
MODEL	TOTAL LENGTH OF CABLE (FT) *								▲ 12 VOLT AUXILIARY BATTERY REQUIREMENTS	
	0-20	21-25	26-30	31-40	41-50	51-60	61-70	71-80	CCA (A) **	RC (MIN) ***
▲ CE1500 CE6K CT2000 CT2003/4/5 DT7K	#4	#4	#2	#2	#1	#0	#0	#00	350	100
ET5500MPB ET5500R ET6KMPB ET6KR ET6K ET8K ET10K ET12K	#2	#2	#1	#0	#00	NOT RECOMMENDED			450	100
ET8KX ET10KX ET12KX ▲ ET12KXP	#2	#2	#1	#0	#00	NOT RECOMMENDED			550	150
ET18K(X) ET25K(X) ET30KX ET36KX	SEE DRAWING 15660 FOR CABLE AND BATTERY REQUIREMENTS									

* INCLUDES GROUND CABLE

** CCA = COLD CRANKING AMPS AT 0° (F).

*** RC = RESERVE CAPACITY IN MINUTES AT 25 AMPS AND 80° (F).
THE RC RATING IS A MEASURE OF THE PERIOD OF TIME THE BATTERY CAN SUPPLY A GIVEN CURRENT WITHOUT RECHARGING.



VENCO VENTURO INDUSTRIES LLC
CINCINNATI, OHIO

TITLE
CABLE & BATTERY

ELECTRIC CRANES

DATE
07-30-18X

SUPERSEDES
09-27-17W

SECTION
C200

711105

RECOMMENDED CIRCUIT BREAKER TABLE

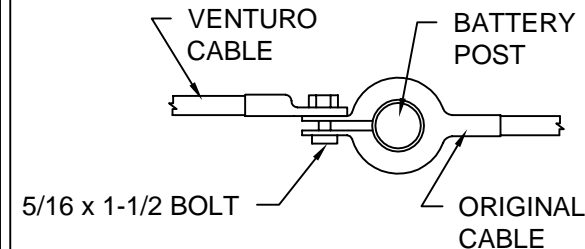
CRANE	DESCRIPTION	PART NO.
CT310KX	250 AMP, MAN RESET	22946-250
DT7	250 AMP, MAN RESET	22946-250
CE-1500-FB	150 AMP, MAN RESET	22946-150
CE6K	150 AMP, MAN RESET	22946-150
CT200X	250 AMP, MAN RESET	22946-250
ET6K	250 AMP, MAN RESET	22946-250
ET8/12K(X)	250 AMP, MAN RESET	22946-250
ET12KXP	300 AMP, MAN RESET	22946-300
ET16/18KX-16'	250 AMP, MAN RESET	22946-250
ET16/18KX-20'	300 AMP, MAN RESET	22946-300
ET25/30KX	300 AMP, AUTO RESET	22946-300
ET36KX	300 AMP, AUTO RESET	22946-300

BATTERY REQUIREMENTS

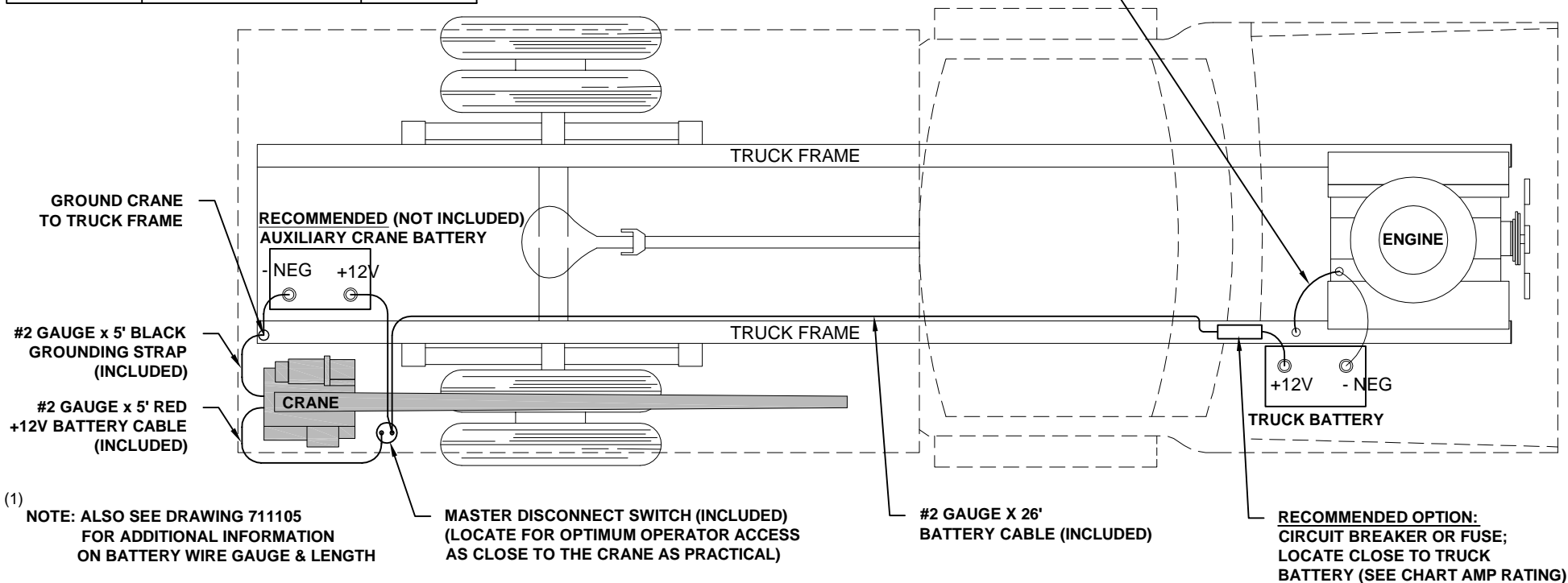
- 12 VOLT VEHICLE BATTERY REQUIREMENTS
 - 625 COLD CRANKING AMPS (AT 0° F)
 - 160 MINUTES RESERVE CAPACITY
 - 102 PLATES, 105 AMP-HR
- (1) • 12 VOLT AUXILIARY BATTERY REQUIREMENTS
 - SEE MINIMUM WIRE GAUGE AND BATTERY SIZE

NOTE: OPERATING WITH THE VEHICLE BATTERY 'ONLY' IS PERMISSIBLE, BUT NOT RECOMMENDED.

RECOMMENDED BATTERY TERMINAL ATTACHMENT



INSTALL #2 GAUGE GROUND STRAP FROM ENGINE TO TRUCK FRAME (REQUIRED IF NEGATIVE FROM BATTERY IS CONNECTED TO ENGINE)



VENCO VENTURO INDUSTRIES LLC
CINCINNATI, OHIO

TITLE

BATTERY CABLE & COMPONENT INSTALL

ET CRANES

DATE

09-03-20M

SUPERSEDES

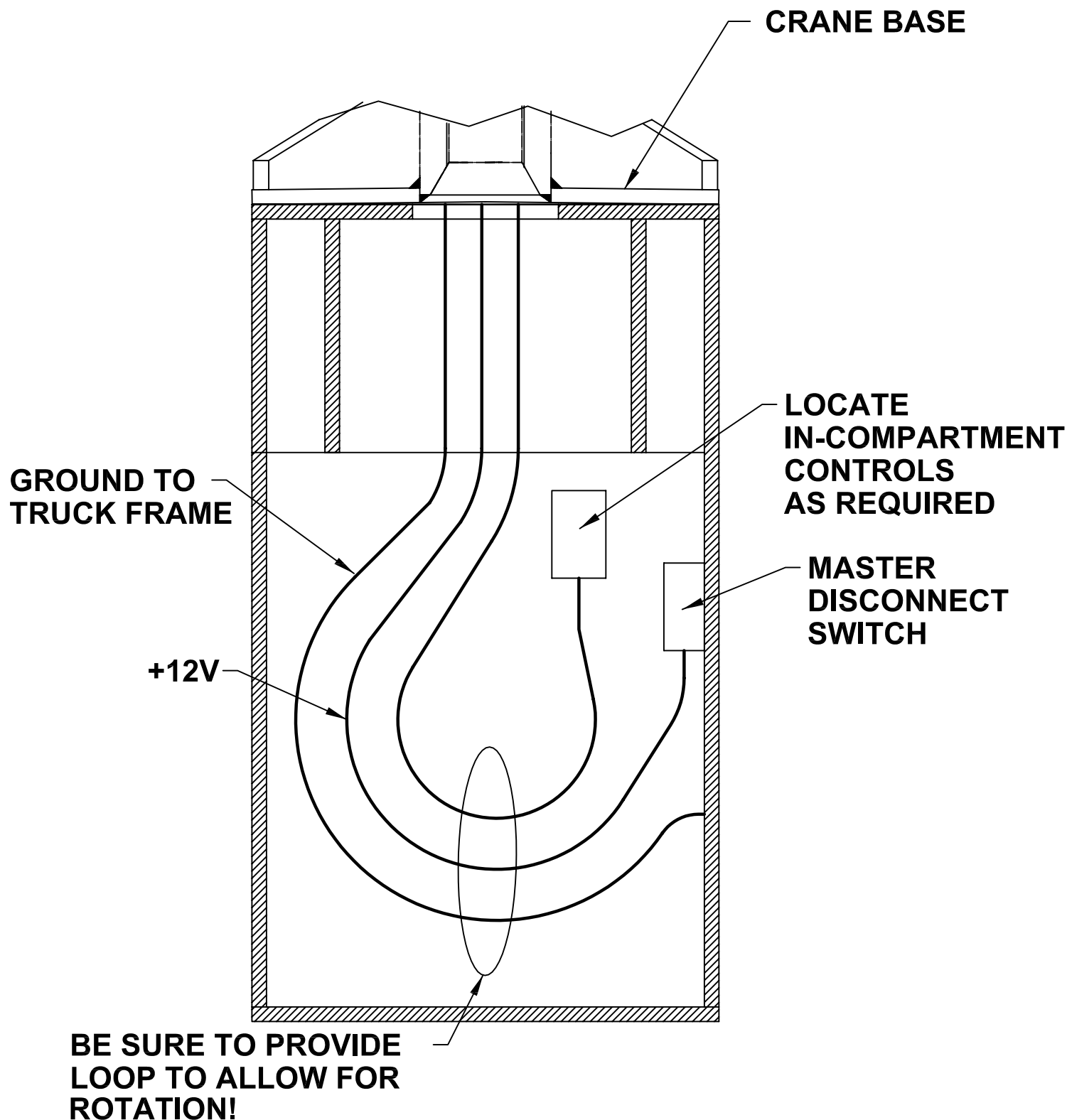
07-30-18L

SECTION

C200

15660

IN-COMPARTMENT CONTROLS INSTALLATION ET25/30/36KX(X)



MFG., INC.
CINCINNATI, OHIO

TITLE
INSTALLATION DWG

ET25/30/36KX(X)

DATE
9-14-09A

SUPERSEDES
9-13-01

SECTION
-

19961

WIRE ROPE INSTALLATION

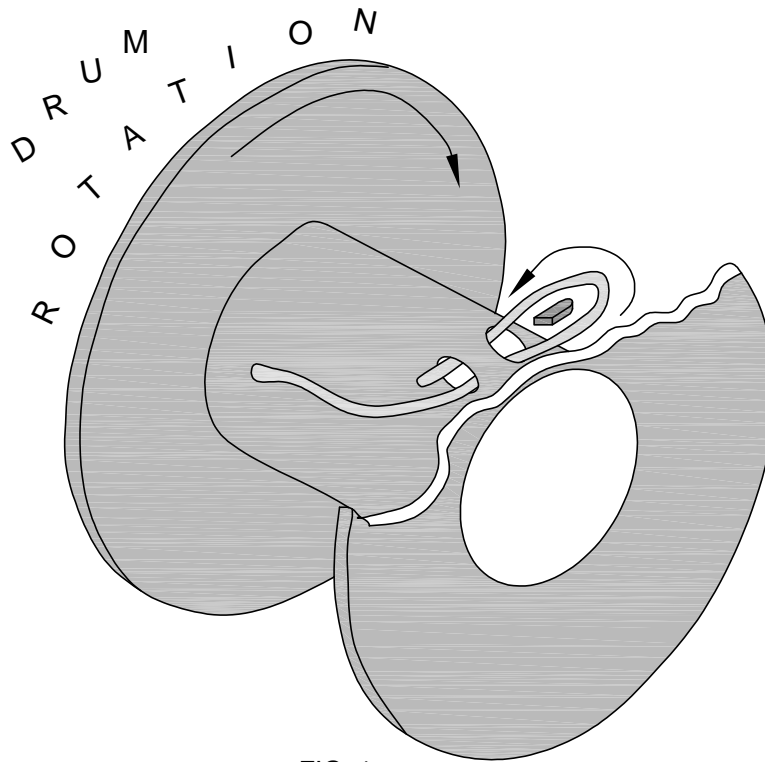


FIG. 1

- STEP 1: UNWIND COIL OF WIRE ROPE BY 'ROLLING' ALONG THE FLOOR. THIS WILL PREVENT 'KINKING'.
- STEP 2: INSERT WIRE ROPE END UP THROUGH ANTI-2-BLOCK (A2B) CAGE ASSEMBLY, BETWEEN CHEEK PLATES, OVER THE TOP SHEAVE, AND THROUGH WIRE ROPE GUIDE.
- STEP 3: INSERT WIRE ROPE END INTO POCKET OPENING ON WINCH, WRAP AROUND WEDGE, AND BACK THROUGH POCKET OPENING AS SHOWN IN FIGURE 1.



CAUTION

- IF THE WIRE ROPE IS NOT INSTALLED FOR THE CORRECT DRUM ROTATION, THE WINCH BRAKE VALVE WILL NOT HOLD THE LOAD.



CAUTION

- THERE MUST ALWAYS BE AT LEAST [5] DEAD WRAPS OF WIRE ROPE ON THE WINCH DRUM WHILE UNDER LOAD.

NOTE: SOME WINCHES MAY BE SUPPLIED WITH A HEX NUT IN LIEU OF A WEDGE FOR INSTALLING THE WIRE ROPE.



VENCO VENTURO INDUSTRIES LLC
CINCINNATI, OHIO

TITLE

WIRE ROPE INSTALLTN

DATE

02-21-14K

SECTION

C200

ET6K & LARGER CRANES

SUPERSEDES

12-26-13J

22245

SECTION 300

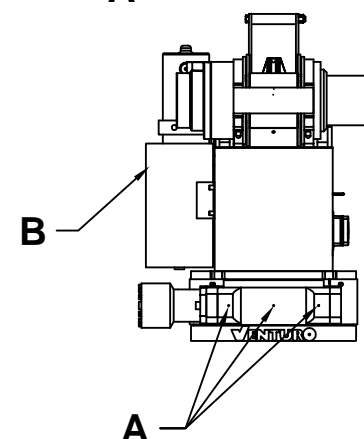
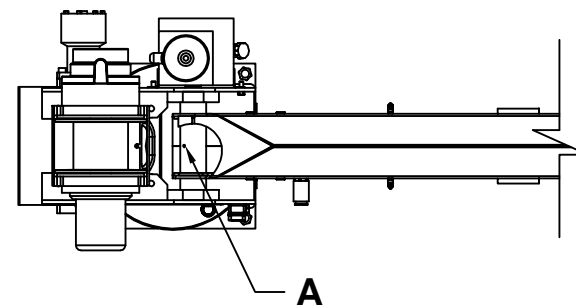
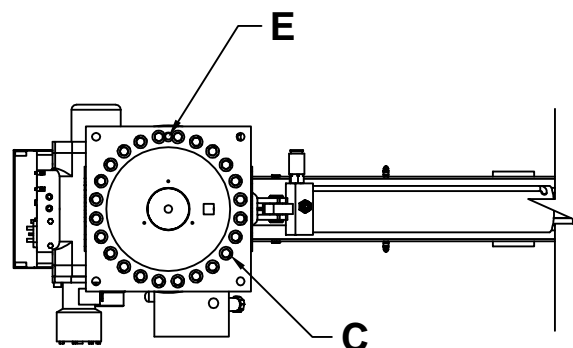
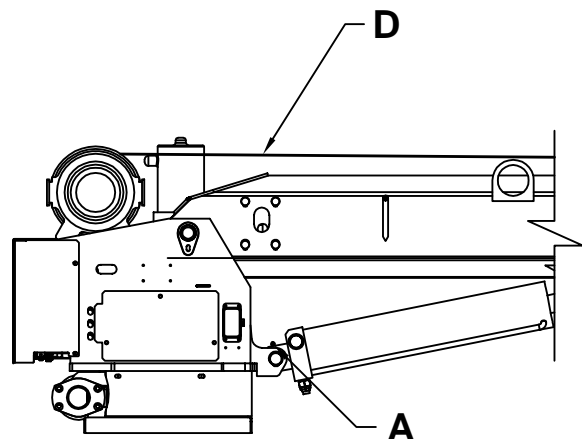
MAINTENANCE

&

SERVICE



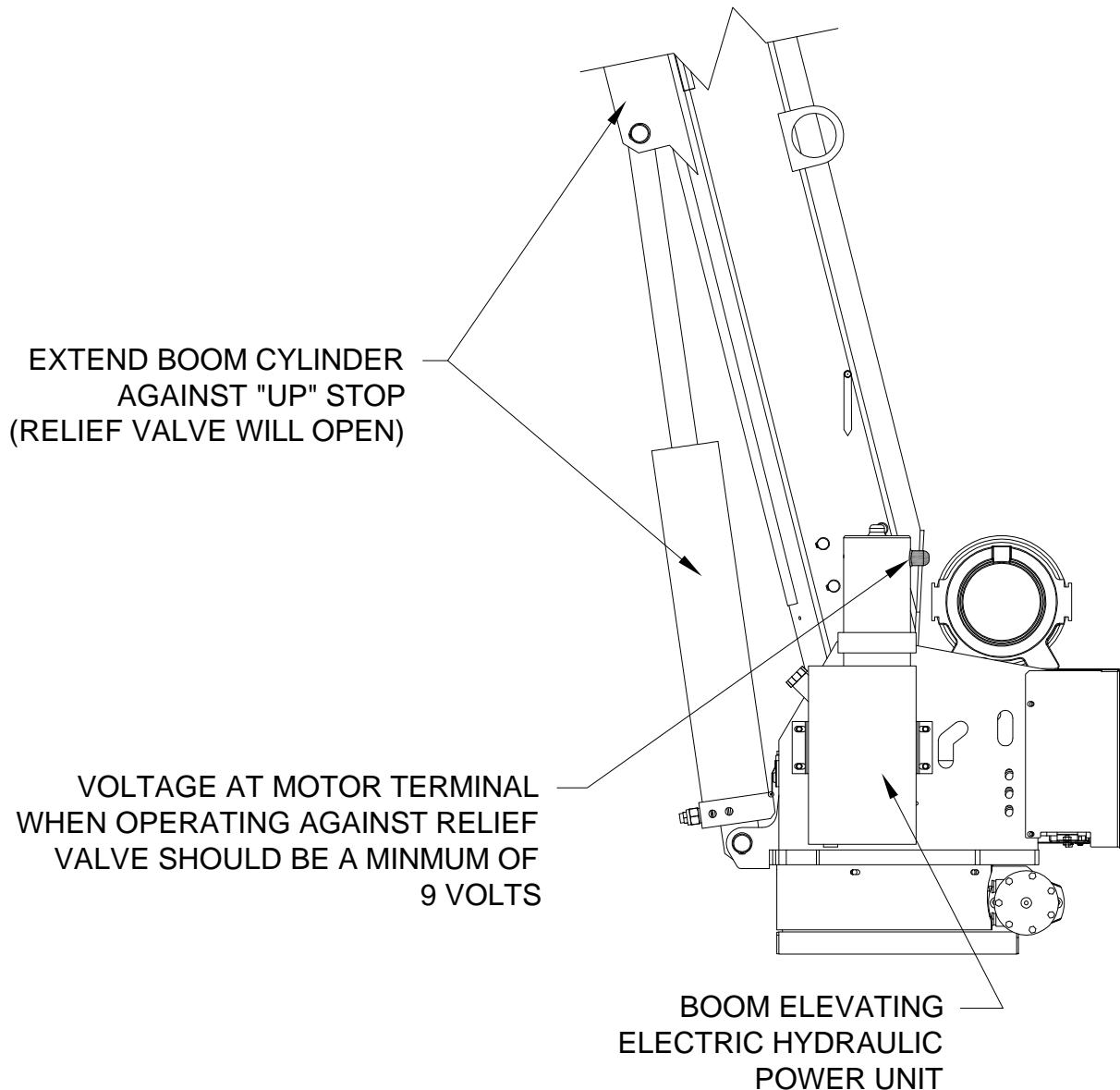
VENCO VENTURO INDUSTRIES LLC
CINCINNATI, OHIO



Location	Service Required	Note		Service Interval
A	Grease fitting With Pressure Grease Gun	USE ELECTRICALLY CONDUCTIVE GREASE Example: Fuch's Renolit Aluminum Complex Grease P/N 155250-2 (or equivalent).		Time of Truck Service
B	Fill Oil Reservoir to Oil Level with Boom Down	Use Dextron III ATF or ISO Grade AW 46 for Ambient Temperatures Between -22° F and 30° F	Use ISO Grade 68 or Equivalent for Ambient Temperatures Between 10° F and 125° F	Time of Truck Service and as required by changes in the ambient temperature range
C	Check Torque of bolts	Bolts should be torqued to 60 ft-lbs		Time of Truck Service
D	Check Wire Rope and Hook	Rope should be free of kinks and fraying		Time of Truck Service
E	Grease Fitting With Pressure Grease Gun	USE ELECTRICALLY CONDUCTIVE GREASE Example: Fuch's Renolit Aluminum Complex Grease P/N 155250-2 (or equivalent).		Every 6 months

MINIMUM VOLTAGE TEST

ONE OF THE MOST COMMON ELECTRICAL PROBLEMS ENCOUNTERED ON 12 VOLT ELECTRICAL CRANES IS INSUFFICIENT VOLTAGE AT THE MOTOR WHEN DRAWING THE LARGE CURRENT THAT EXISTS AT FULL LOAD



MANUFACTURING, INC.
CINCINNATI, OHIO

TITLE	MINIMUM VOLTAGE TEST
ET SERIES CRANES	

DATE	12-26-13G
SUPERSEDES	10-05-09F

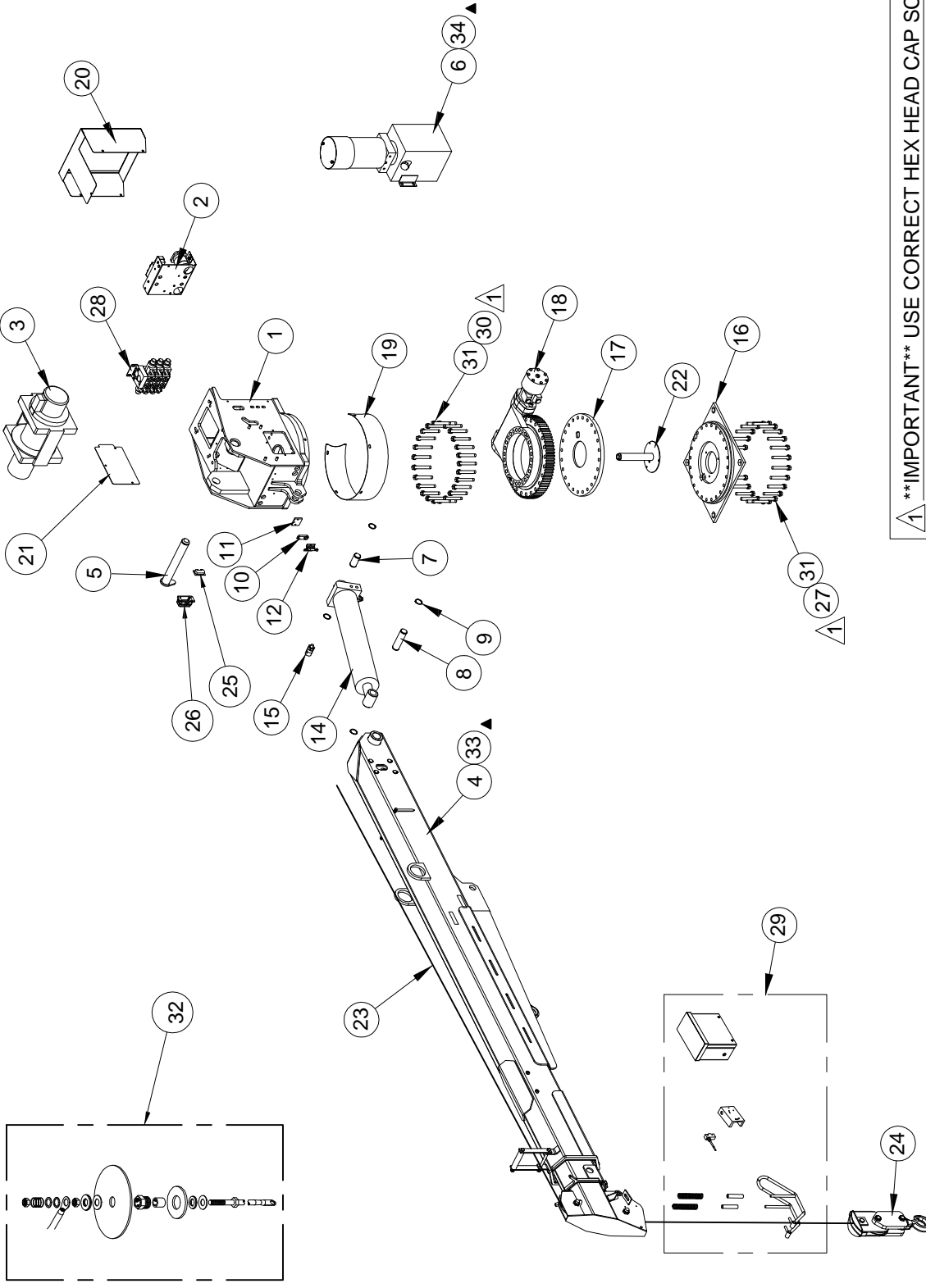
SECTION	C300
	19963

SECTION 400

REPLACEMENT PARTS



VENCO VENTURO INDUSTRIES LLC
CINCINNATI, OHIO



1 **IMPORTANT** USE CORRECT HEX HEAD CAP SCREW

- ITEM # 30, P/N IHCHSM12175090-8.8 (90MM LONG) FOR TOP OF SLEWING RING

- ITEM # 27, P/N IHCHSM12175080-8.8 (80MM LONG) FOR 'BOTTOM' OF SLEWING RING

REPLACEMENT PARTS LIST - REF 21897

VENTURO® VENCO VENTURO INDUSTRIES LLC CINCINNATI, OHIO	TITLE REPLACEMENT PARTS DRAWING		DATE 03-07-17E	SECTION C400
	ET25KX SERIES CRANES		SUPERSEDES 01-29-13D	21896

34	1	27512	HYDRAULIC POWER UNIT; DUAL-STAGE BOOM
33	1	27197	BOOM FINAL ASS'Y (DUAL-STAGE)
32	1	16780-1	SWIVEL TERMINAL ASS'Y.
31	50	!LWSH-050	LOCK WASHER; 1/2"
30	26	!HHCSM12175090-8.8	HHCS; 12MM-1.75MM X 90MM LG, GR. 8.8
29	1	27738	ANTI-2-BLOCK; MECHANICAL ASS'Y.
28	1	28801	VALVE BLOCK - 3-SPOOL
27	24	!HHCSM12175080-8.8	HHCS; 12MM-1.75MM X 80MM LG, GR. 8.8
26	1	19425	SOCKET CASE
25	1	19428	INSERT; 10 PIN FEMALE
24	1	27667	LOAD BLOCK; 6000 LBS.
23	1	27668-5/16-80	WIRE ROPE; 5/16" X 80 FT.
22	1	27568	CANDLESTICK ASS'Y.; SWIVEL PIGTAIL
21	1	27000	SIDE COVER; HOUSING
20	1	27600	REAR COVER; HOUSING
19	1	27186	COVER; SLEWING RING
18	1	21418	SLEWING RING
17	1	27520H	SPACER
16	1	27520M-2-R	WELDED ASS'Y.; BASE
15	1	17460-2400-21	OVERLOAD PRESSURE SWITCH
14	1	21752	ELEVATION CYLINDER
13	1	19269	CABLE CLAMP; 1/4"
12	1	19917	SWITCH BRACKET; BOOM SHUT-OFF
11	1	20896	MOUNTING BLOCK; BOOM SWITCH
* 10	1	19918	SWITCH; BOOM SHUT-OFF
9	4	!SRNG-125	RETAINING RING; 1/4" SHAFT DIA.
8	1	18761	PIVOT PIN; ELEVATION CYLINDER
7	1	18762	PIVOT PIN; ELEVATION CYLINDER
6	1	27009	HYDRAULIC POWER UNIT; SINGLE-STAGE BOOM
5	1	21012	PIVOT PIN; MAIN BOOM PIVOT
4	1	27198	BOOM FINAL ASS'Y (SINGLE-STAGE)
3	1	19813	ELECTRIC WINCH
2	1	23154-2	ELECTRICAL COMPONENT ASS'Y.
1	1	27184	WELDED ASS'Y.; HOUSING
ITEM NO.	QTY.	PART NO.	DESCRIPTION

(*) NOT ILLUSTRATED

REFERENCE REPLACEMENT PARTS DRAWING 21896



VENCO VENTURO INDUSTRIES LLC
CINCINNATI, OHIO

TITLE

REPLACEMENT PARTS LIST

DATE

06-26-25K

SECTION

C400

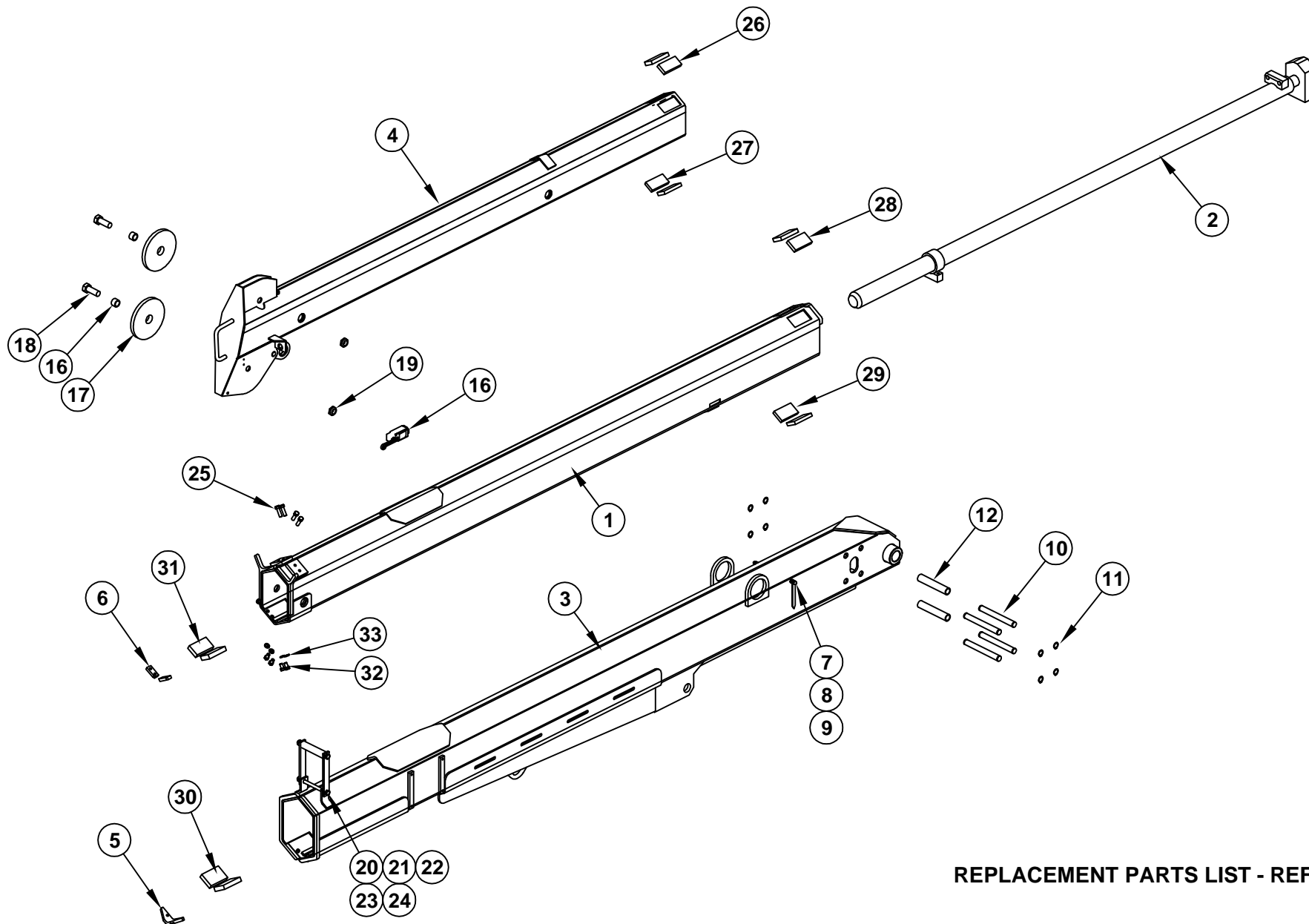
ET25KX SERIES CRANES

SUPERSEDES

03-07-17J

21897

27198 BOOM REPLACEMENT PARTS

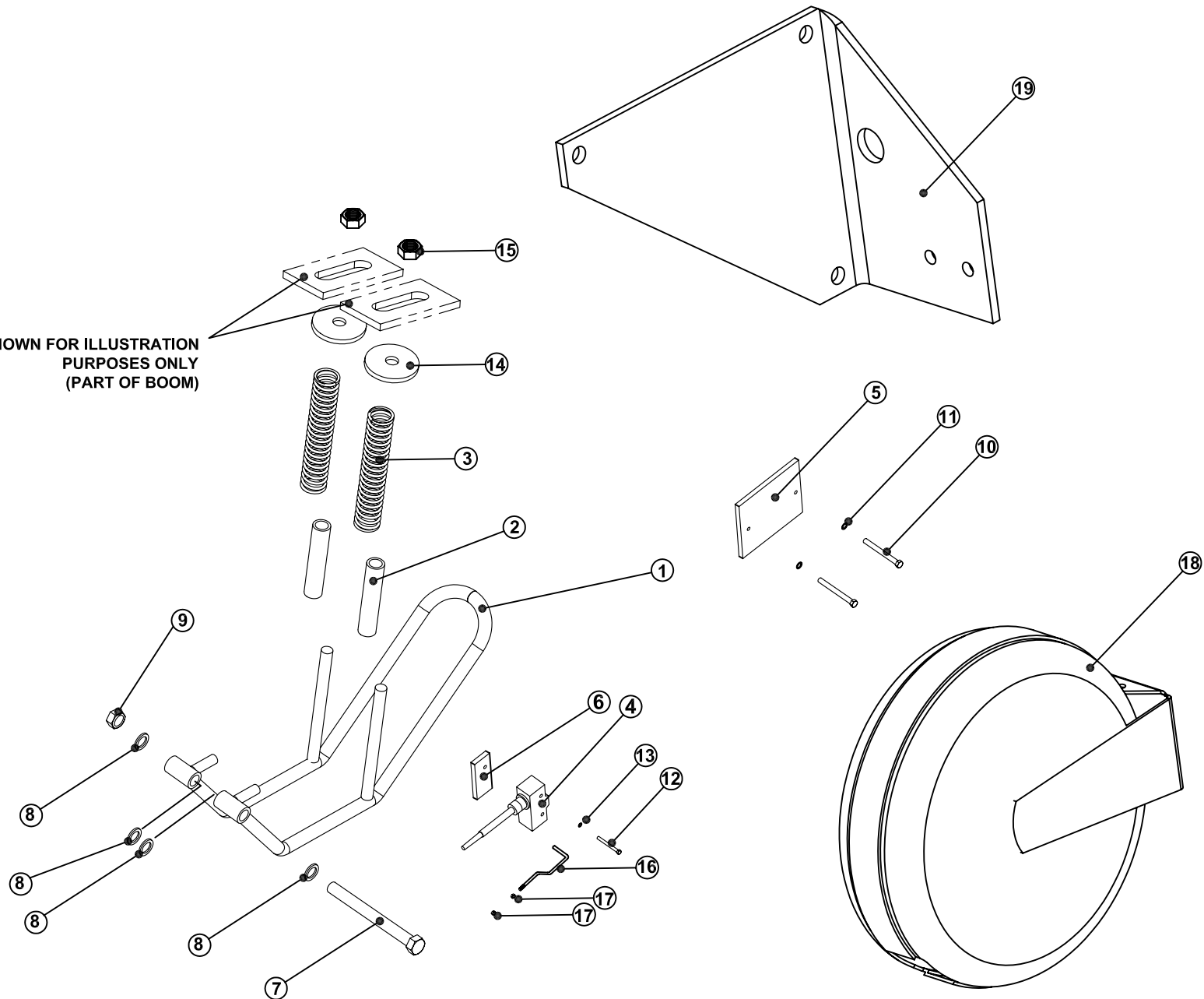


REPLACEMENT PARTS LIST - REF 21199

33	6	!LWSH-038	LOCK WASHER 3/8"
32	6	!HHCS03816063	HEX HEAD CAP SCREW 3/8-16 X 5/8 LG
31	2	23217-10	UHM W PAD
30	2	23217-3	UHM W PAD
29	2	23217-9	UHM W PAD
28	2	23217-8	UHM W PAD
27	2	23217-7	UHM W PAD
26	2	23217-6	UHM W PAD
25	4	!CACS03816075	C-SINK CAP SCREW 3/8-16 X 3/4 LG
24	2	!LNUT-04414	NYLON INSERT LOCK NUT - 7/16-14
23	1	21560	ROLLER,UHM W GUIDE
22	1	21936	FLAT,MOUNT;WIRE ROPE GUIDE
21	1	!HHCS04414550	HHCS - 7/16-14 X 5-1/2 LG
20	1	21935	WIRE-ROPE GUIDE WELDED
19	2	!LNUT-07510	LOCKNUT 3/4-10
18	2	17059-6	SHEAVE AXLE 3/4 X 2 W/ 1" SHANK
17	2	27001	SHEAVE - BOOM
16	2	23924	SPACER - SHEAVE
15	-	-	-
14	-	-	-
13	-	-	-
12	2	21498	EXTENSION CYLINDER ROLLER
11	8	!SRNG-075	RETAINING RING - 3/4" SHAFT DIA.
10	4	21497	THRUST PIN - EXTENSION CYLINDER
9	2	!ANUT-02520S	ACORN NUT 1/4-20 STAINLESS
8	2	13459-2	BOOM ARROW 4-7/16 LONG
7	2	22490	SPACER, BOOM ARROW 1/2" O.D.
6	2	23119	BEARING RETAINING BLOCK
5	1	23183	V-BLOCK SLIDER
4	1	27110	TERTIARY BOOM WELDED ASSEMBLY
3	1	21472	PRIMARY BOOM WELDED ASSEMBLY
2	1	20061	EXTENSION CYLINDER - HOLLOW ROD
1	1	27108	SECONDARY BOOM WELDED ASSEMBLY
ITEM NO.	EXPLODE/QTY.	PART NUMBER	DESCRIPTION

**REPLACEMENT PARTS
DRAWING - REF 21198**

SHOWN FOR ILLUSTRATION
PURPOSES ONLY
(PART OF BOOM)



19	1	27583	MOUNTING BRACKET - CORD REEL
18	1	27310	CORD REEL
17	2	!LNUT-#0440	LOCKNUT W/ NYLON INSERT - 4-40
16	1	27624	ROD ASSY. ADJUSTABLE A2B
15	2	!LNUT-04414	LOCKNUT W/ NYLON INSERT - 7/16-14
14	2	!FWSH-050	FLAT WASHER - 1/2" USS
13	1	!LWSH-#06-STAR	EXTERNAL STAR LOCK WASHER - #06
12	1	!PHCS#0632100	PAN HD CAP SCREW - #6-32 x 1
11	2	!LWSH-#10	LOCK WASHER - #10
10	2	!PHCS#1024125	PAN HD CAP SCREW - #10-24 x 1-1/4
9	1	!JNUT-04414N	HEX JAM LOCKNUT - 7/16-14
8	4	!FWSH-044SAE	FLAT WASHER - 7/16 SAE
7	1	!HHCS04414450	HEX HD CAP SCREW - 7/16-14 x 4-1/2
6	1	27696	BASE - NEOPRENE
5	1	27698	COVER PLATE
4	1	19376	ANTI-TWO BLOCK SWITCH
3	2	27586	SPRING
2	2	27579b	SPRING LOCATING TUBE
1	1	21870	ANTI - TWO - BLOCK CAGE ASSEMBLY
ITEM NO.	EXPLODED/QTY.	PART NUMBER	DESCRIPTION



MANUFACTURING, INC.
CINCINNATI, OHIO

TITLE

ANTI-TWO-BLOCK SYSTEM

ET25/30/36 & HT25/30

DATE

3-4-10

SUPERSEDES

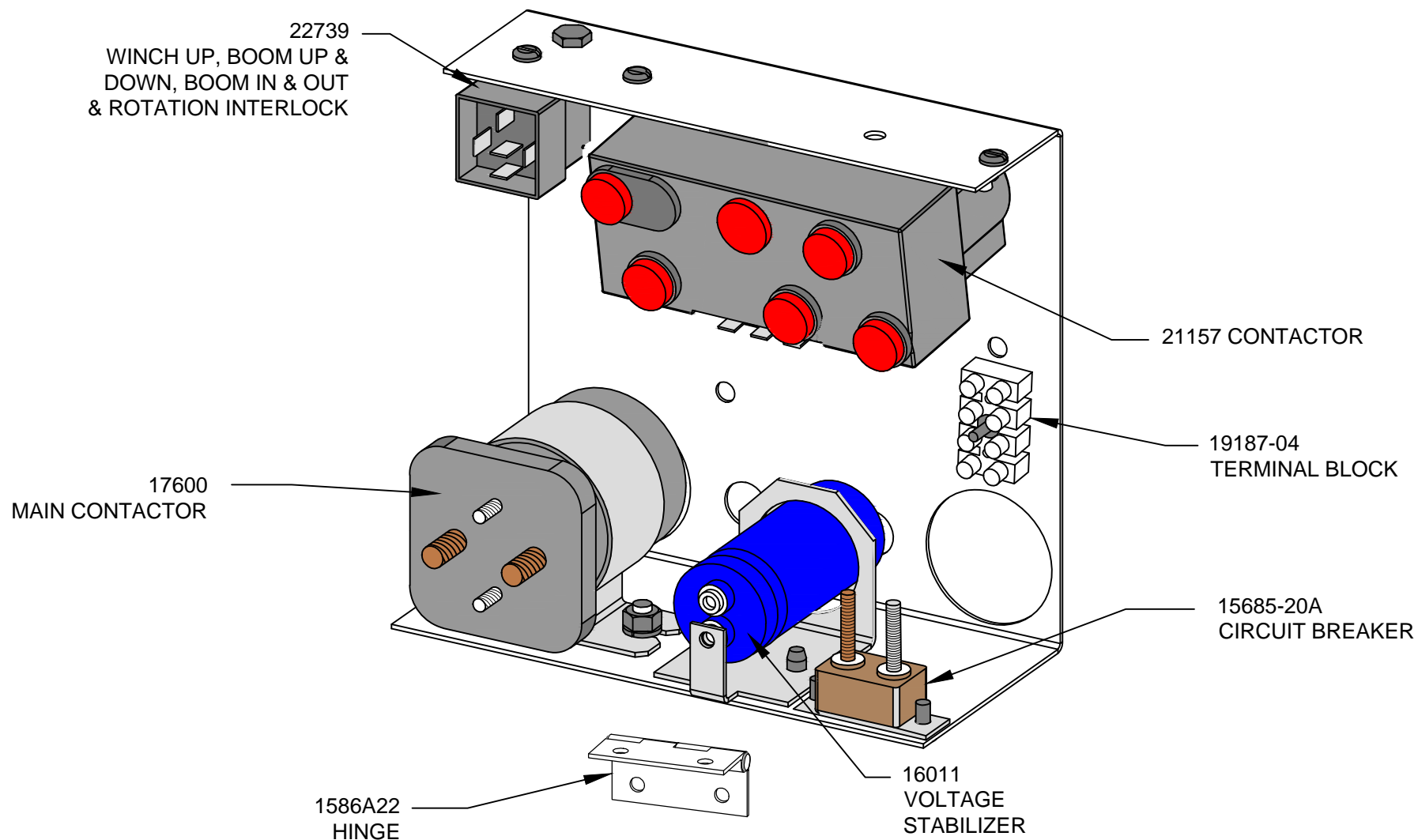
-

SECTION

C400

21881

23154-2 ELECTRICAL COMPONENT ASSEMBLY



VENCO VENTURO INDUSTRIES LLC
CINCINNATI, OHIO

TITLE

23154-2 ELECTRICAL COMPONENT ASSY

ET25/30/36KX

DATE

02-19-20E

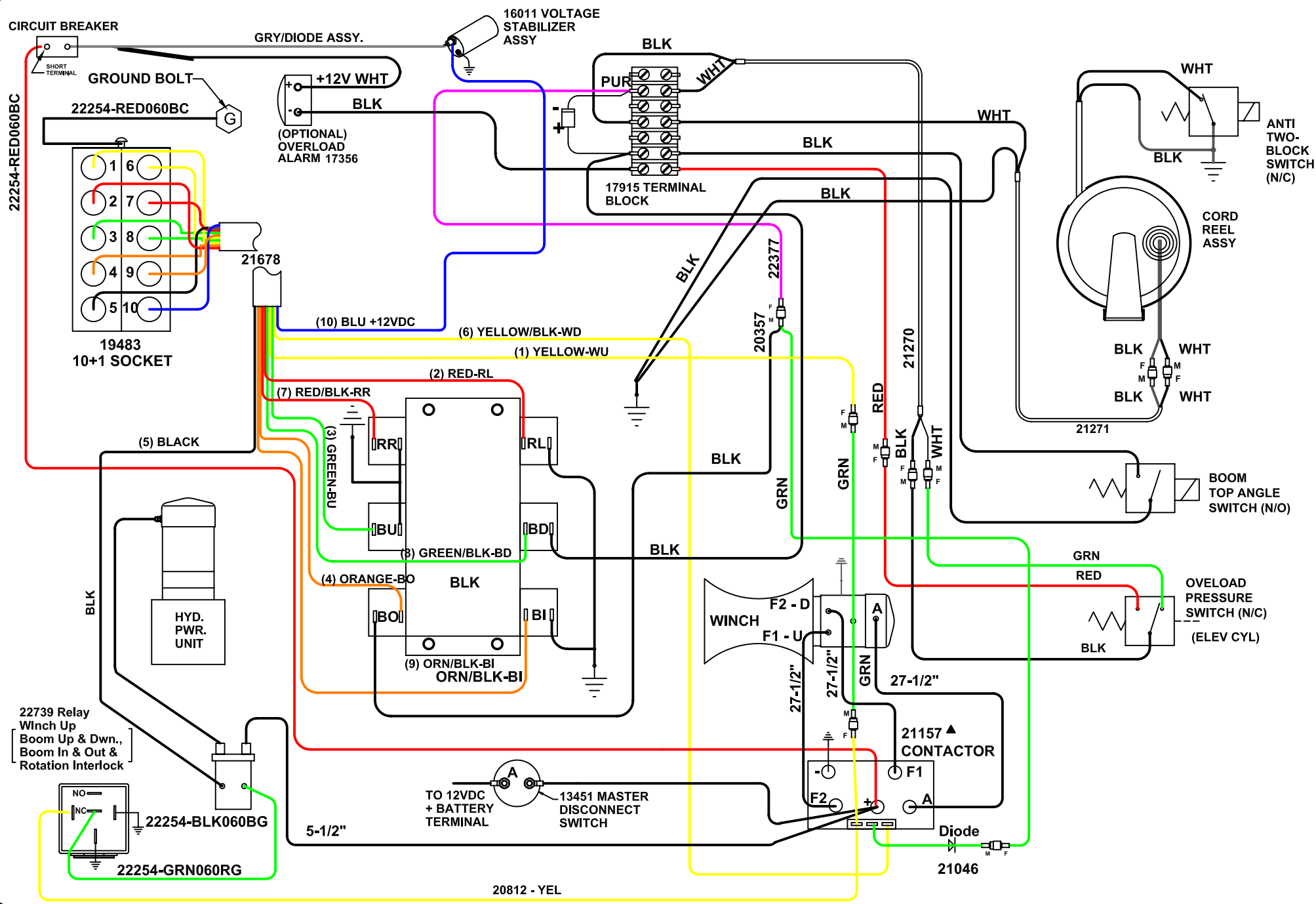
SUPERSEDES

02-10-20D

SECTION

C400

21776



MANUFACTURING, INC.
CINCINNATI, OHIO

TITLE

WIRING DIAGRAM

ET30KX, ET25KX (GEN. C)

DATE

3-22-12C

SUPSEDES

7-21-11B

SECTION

-

21859

Single & 2-Pole Slip-ring Replacement Parts (1 of 2)

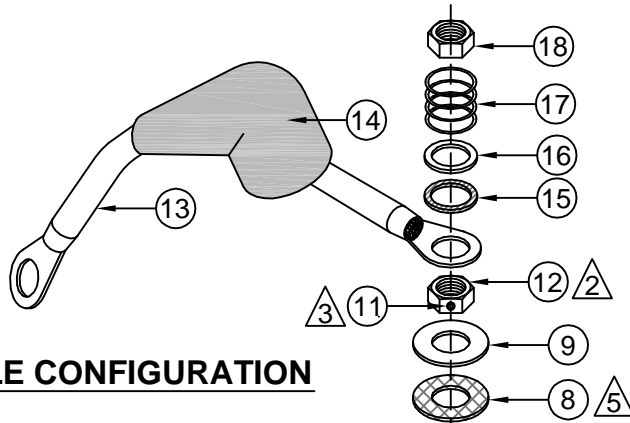
						16780 BILLS OF MATERIALS		
Quill Rotation	Slew Rotation Single Pole Slip-Ring	Slew Rotation 2-Pole Slip-Ring (ET6K ONLY)	Slew Rotation 2-Pole Slip-Ring (ET8-18KX)	Slew Rotation 2-Pole Slip-Ring (ET25-36KX)	ALL CRANES			
16780	16780 - 1	16780 - 2P6	16780 - 2P8	16780 - 2P25	16780 - KIT			
QTY						#	PART	DESCRIPTION
1	1	1	1	1	-	1	16783	PIGTAIL AND STUD ASSEMBLY
1	1	1	1	1	1	2	12534-5	ZINC BUSHING; 5/8" I.D. X 1" O.D. X 14 GAUGE
2	2	2	2	2	2	3	14357-1	FIBER WASHER; 5/8" I.D. X 1 1/16" O.D. X 1/16"
1	1	1	1	1	1	4	14233	INSULATING BUSHING; 5/8" I.D. X 7/8" O.D. X 7/8"
1	-	-	-	-	-	5	14318	FLAT WASHER; 1 3/16" I.D. X 2 3/4" O.D. X 3/16"
1	-	-	-	-	-	6	14232	INVERTED FLARE NUT; 1 3/16"-16
-	-	-	-	-	-	7	27568	WELDED ASSY. CANDLESTICK
1	1	1	1	1	1	8	14357-2	FIBER WASHER; 5/8" I.D. X 1 1/4" O.D. X 1/16"
1	1	1	1	1	1	9	IFWSH-063SAE	FLAT WASHER; 5/8" SAE
-	1	-	-	-	-	10	27156	RUBBER WATER SHIELD; 1/8" THICK
1	1	1	1	1	1	11	ISHCS02528025KC	SET SCREW W/ KNURLED CUP; 1/4"-28 X 1/4"
1	1	1	1	1	1	12	21273	BRASS JAM NUT; 5/8"-11
-	-	-	-	-	-	13	26035-2	PIGTAIL; SWIVEL TERMINAL
-	-	-	-	-	-	14	17012	RUBBER BOOT; SWIVEL TERMINAL
1	1	1	1	1	1	15	5612-162-62	TEFLON WASHER
1	1	1	1	1	1	16	5714-113-62	BRASS WASHER
1	1	1	1	1	1	17	LC-098K-00	SPRING; 0.845" O.D. X 0.098" WIRE X 1.00 F.L.
1	1	1	1	1	1	18	!JNUT-06311N	JAM NUT; 5/8"-11, NYLON NUT
1	1	1	1	1	1	19	LOCTITE-24205	REMOVABLE THREAD LOCKER; 0.5ML
1	1	1	1	1	1	20	19368	IDWG; 16780 SWIVEL TERMINAL
-	-	1	-	-	-	21	27456	UHMW WATER SHIELD, (ET6K ONLY)
-	-	-	1	1	-	22	27456-1	UHMW WATER SHIELD, (ET8 - ET36)
-	-	1	1	1	-	23	27461	SPRING, (-) SLIP-RING ASSY.
-	-	-	1	1	-	24	27441-1	COPPER SLIP-RING, (ET8 - ET36)
-	-	1	-	-	-	25	27441	COPPER SLIP-RING, (ET6K ONLY)
-	-	1	1	1	-	26	27449-1	BRASS SLIP-RING (ET6 - ET36)
-	-	1	1	1	-	27	!HHCS03118075-B	BRASS HHCS
-	-	1	1	1	-	28	!HNUT-03118-B	BRASS NYLOC NUT
-	-	1	-	-	-	29	23255	SLIP-RING, WELDED ASSY, ET6K
-	-	-	1	-	-	30	23255-1	SLIP-RING, WELDED ASSY, ET8 - 18K(X)
-	-	-	-	1	-	31	23255-2	SLIP-RING, WELDED ASSY, ET25 - 36K(X)
-	-	1	1	1	-	32	02025-2*96.5INX	(-) WELDING CABLE ASSY, BRASS SLIP-RING
-	-	1	1	1	-	33	02025-2*22.5INX	(-) WELDING CABLE ASSY, COPPER SLIP-RING
-	-	1	1	1	-	34	27463	SHIM, WIDE RIM, 18GA, 2-1/4 O.D. X 1-1/2 I.D.
-	-	1	1	1	-	35	20889	RUBBER GROMMET
-	-	1	1	1	-	36	!SRNG-150	SNAP-RING, EXTERNAL, 1-1/2"



VENCO VENTURO INDUSTRIES LLC
CINCINNATI, OHIO

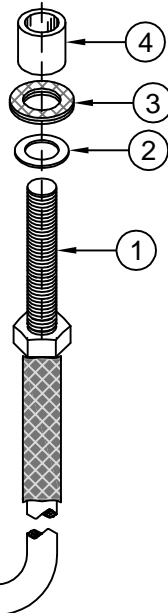
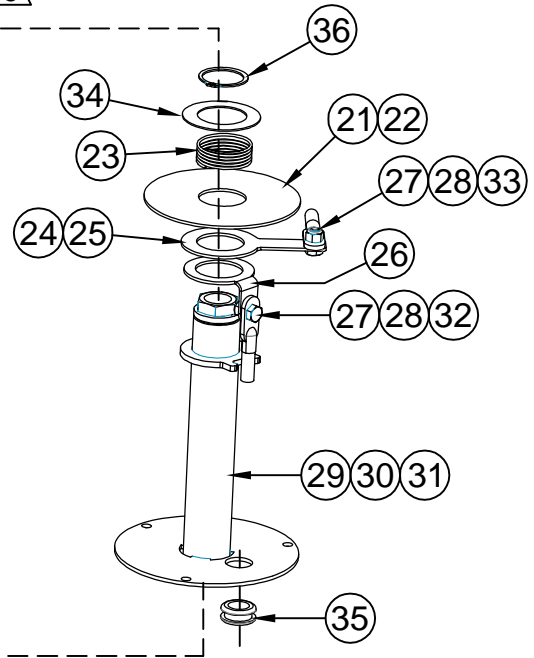
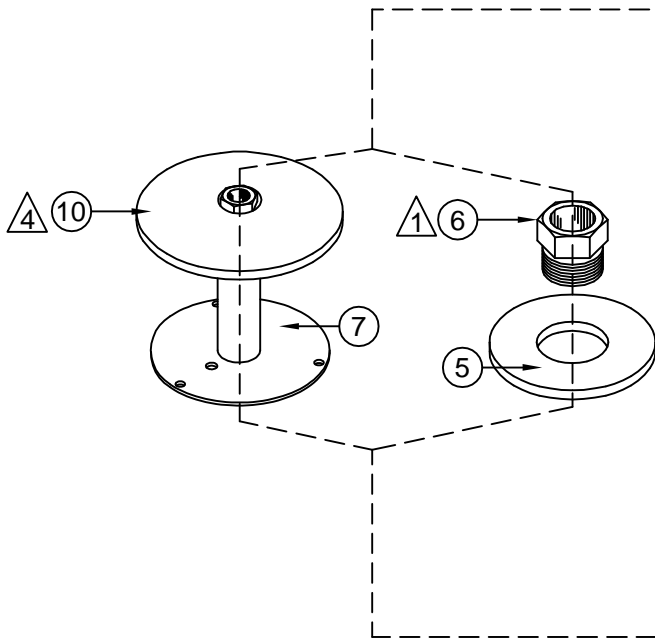
TITLE	DATE	SECTION
16780 REPLACEMENT PARTS	03-29-19A	C400
ET6/8/12/16/18/25/30/36K(X)	SUPERSEDES 04-27-18	21292

Single & 2-Pole Slip-ring Replacement Parts (2 of 2)



SINGLE-POLE CONFIGURATION

2-POLE CONFIGURATION



- 1 LOCTITE 242 BLUE & TORQUE TO 30 FT-LBS FOR QUILL APPLICATIONS
- 2 TORQUE TO 15 FT-LBS
- 3 LOCTITE 242 BLUE
- 4 STRETCH RUBBER WATER-SHED DISC P/N 27156 AROUND 'OUTSIDE' OF THE INVERTED FLARE NUT OF CANDLESTICK, AS SHOWN
- 5 ITEM #8, FIBER WASHER, 5/8 I.D. 'MUST' SIT DIRECTLY ON TOP OF THE INVERTED FLARE NUT ITEM #6.

THE 16780 SWIVEL TERMINAL CAN REPLACE & INTERCHANGE WITH THE 14231 SWIVEL TERMINAL, FOR ET20,000 & ET20K(X) CRANES.



VENCO VENTURO INDUSTRIES LLC
CINCINNATI, OHIO

TITLE
REPL. PARTS ILLUSTRATION
ET6/8/12/16/18/25/30/36K(X)

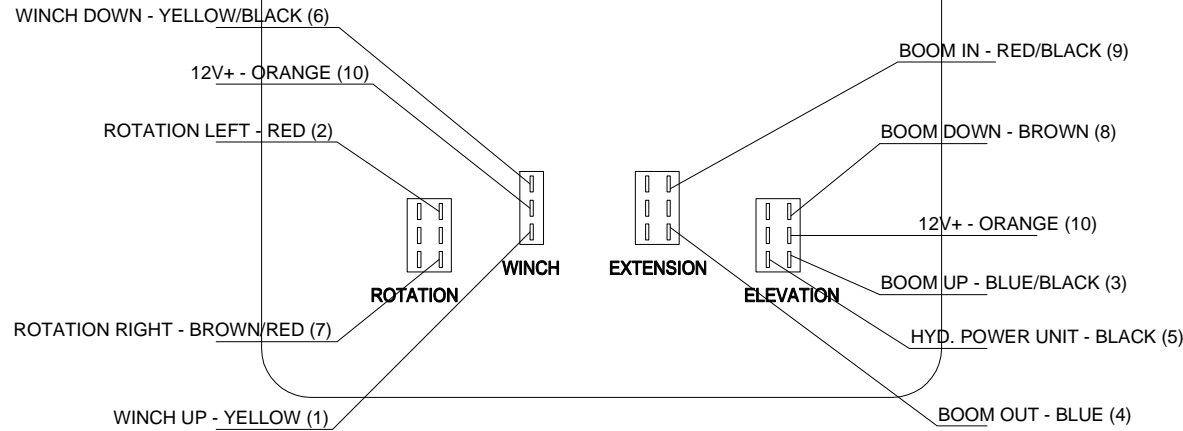
DATE
04-27-18
SUPERSEDES
-

SECTION
C400
21293

22060 PENDANT (4 - SWITCH)

CORD REPLACEMENT INSTRUCTIONS

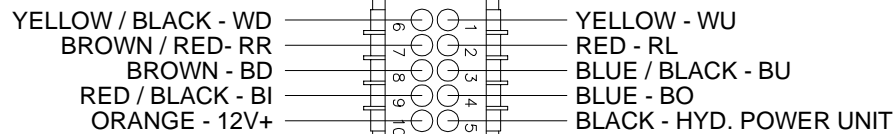
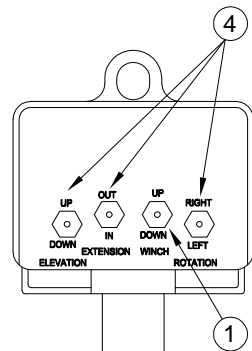
(INSIDE VIEW OF PENDANT CONTROL W/ REAR COVER REMOVED)



NOTE 1)
 WIRE TERMINALS TO BE
 INSTALLED 'AFTER' ROUTING
 REPLACEMENT CORD ASSY
 THROUGH PENDANT HEAD
 AND PLUG HOUSING.

NOTE 2)
 TOGGLE SWITCH JUMPER
 WIRES NOT SHOWN FOR
 CLARITY.

NOTE 3)
 STOW OR CUT-BACK
 UNUSED WIRES.



PLUG - BACKSIDE VIEW

25 FEET, 11 CONDUCTOR

4	3	22152	DPDT MOMENTARY TOGGLE SWITCH
3	1	19427	MALE INSERT - 10 + 1 POLE
2	1	19426	PLUG CASE - 10 + 1 POLE
1	1	22081	SPDT MOMENTARY TOGGLE SWITCH
ITEM	QTY	PART NO.	DESCRIPTION



MANUFACTURING, INC.
 CINCINNATI, OHIO

TITLE

REPLACEMENT PARTS DRAWING & LIST

22060 PENDANT (STANDARD CONTROL)

DATE

12-10-13C

SUPERSEDES

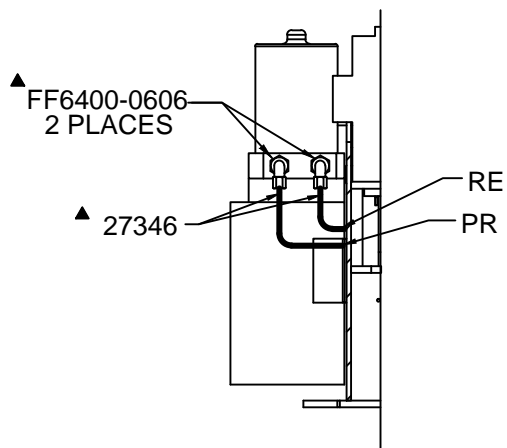
09-28-12B

SECTION

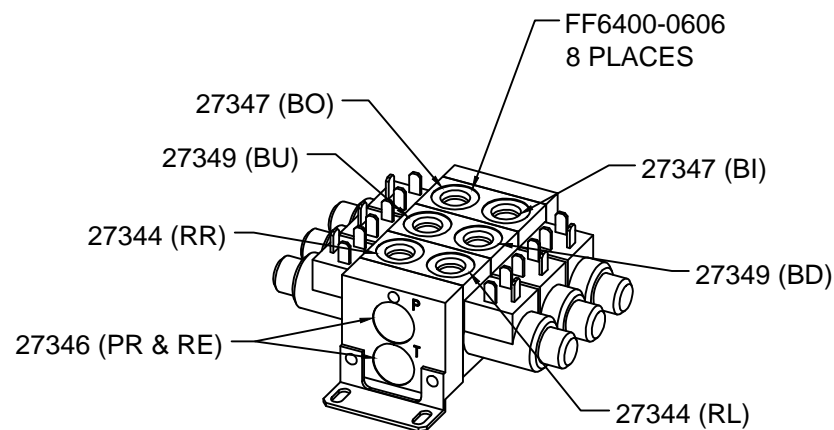
C400

22076

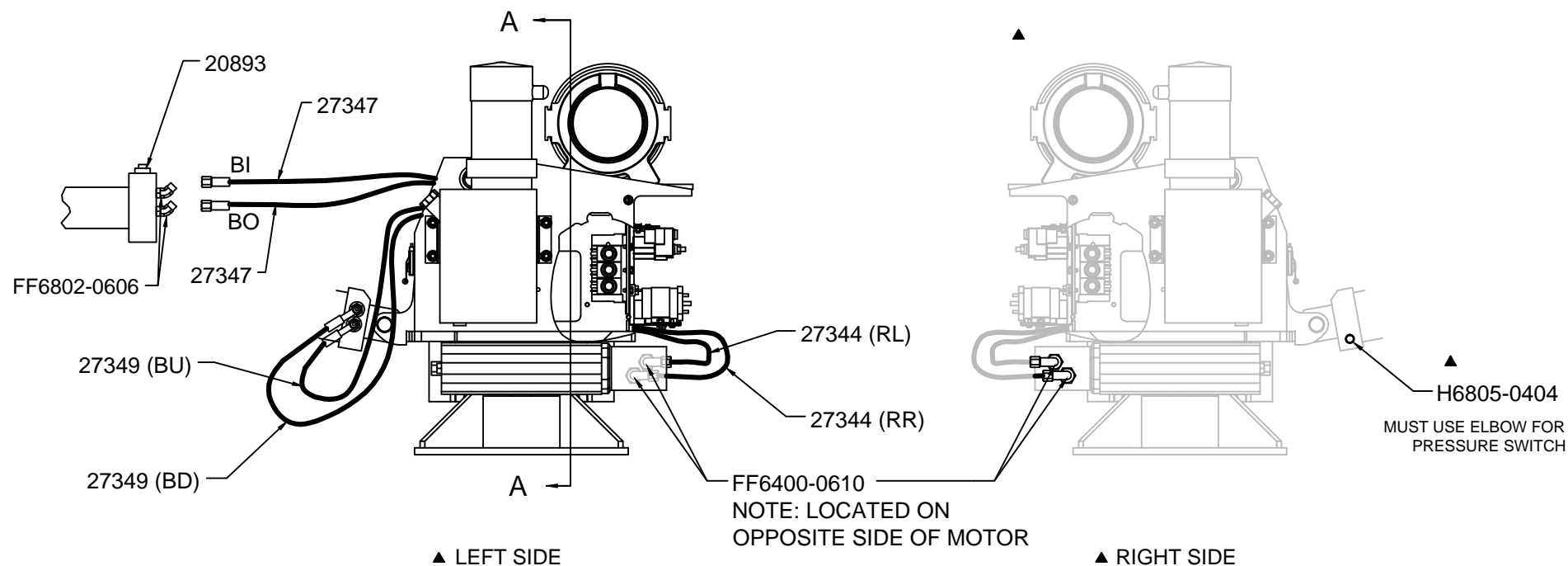
RR	ROTATION RIGHT
RL	ROTATION LEFT
BO	BOOM OUT
BI	BOOM IN
BU	BOOM UP
BD	BOOM DOWN
PR	PRESSURE
RE	RETURN



SECTION VIEW A-A



NOTE:
FOR REPLACEMENT
COILS SEE P/N 23134

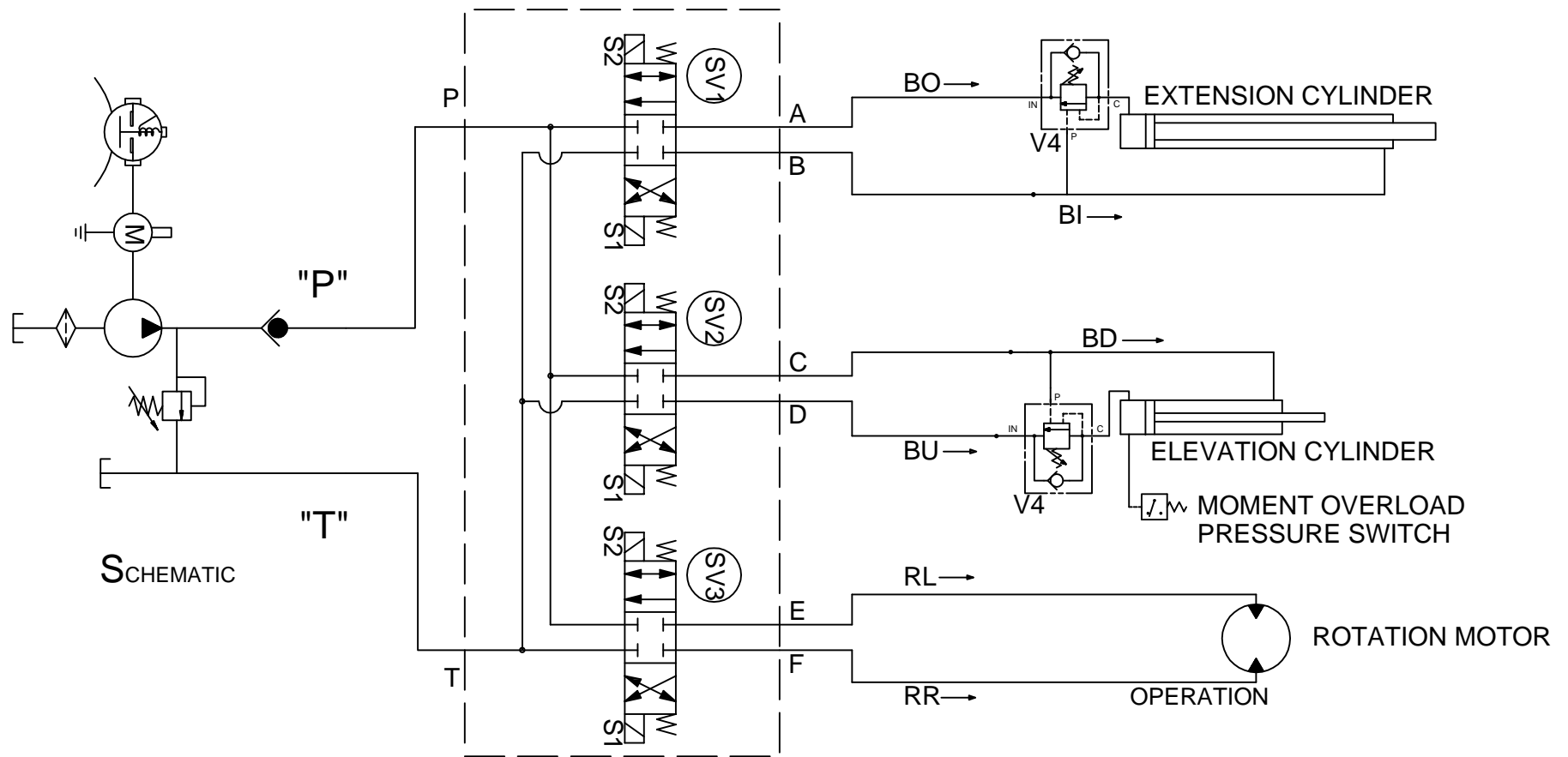


VENCO VENTURO INDUSTRIES LLC
CINCINNATI, OHIO

TITLE	REPLACEMENT PARTS; HYD. COMPONENTS
ET25/30/36KX	

DATE	02-10-20E	SECTION	C400
SUPERSEDES	10-07-19D		21758

ET16/18/25/30/36KX HYDRAULIC COMPONENT DIAGRAM



SV1	SV2	SV3
ENERGIZE "S2"	ENERGIZE "S2"	ENERGIZE "S2"
OPEN FLOW	OPEN FLOW	OPEN FLOW
'P' TO 'A'	'P' TO 'C'	'P' TO 'E'
'B' TO 'T'	'D' TO 'T'	'F' TO 'T'
ENERGIZE "S1"	ENERGIZE "S1"	ENERGIZE "S1"
OPEN FLOW	OPEN FLOW	OPEN FLOW
'P' TO 'B'	'P' TO 'D'	'P' TO 'F'
'A' TO 'T'	'C' TO 'T'	'E' TO 'T'



VENCO VENTURO INDUSTRIES LLC
CINCINNATI, OHIO

TITLE

HYDRAULIC SYSTEM DIAGRAM

ET16/18/25/30/36KX ▲

DATE

10-23-14D

SUPERSEDES

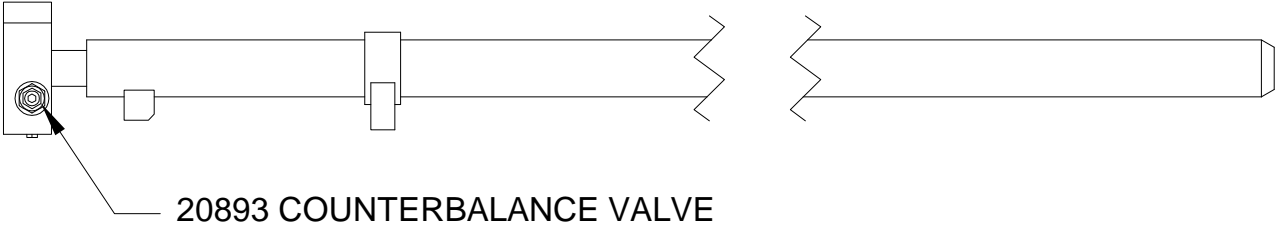
01-31-05C

SECTION

C400

20156

20061 EXTENSION CYLINDER



SEAL KIT P/N: 19887



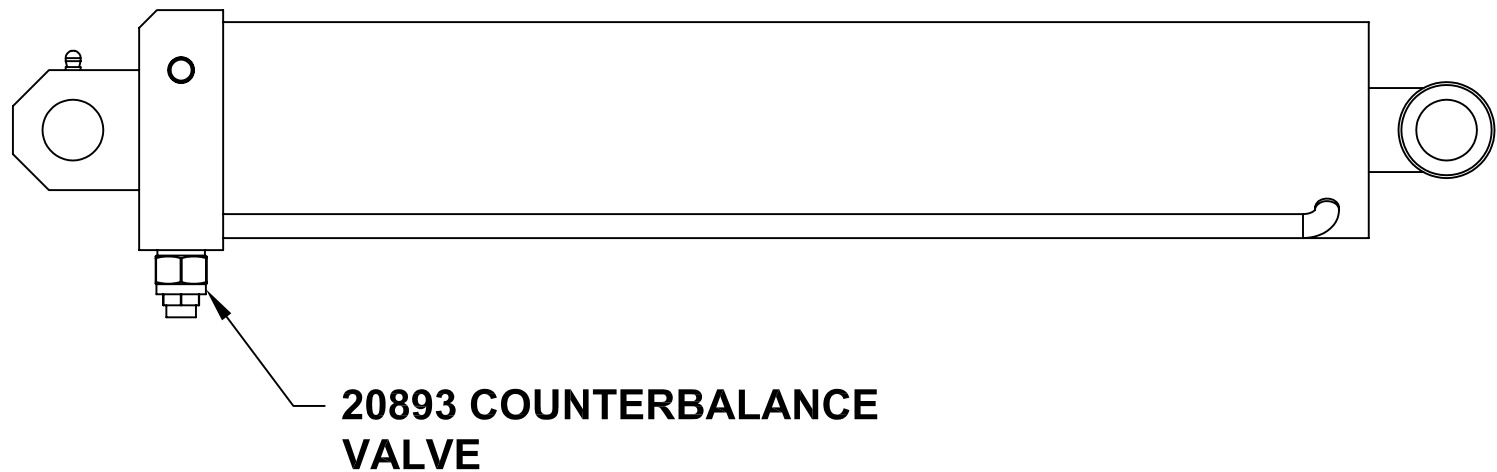
MANUFACTURING, INC.
CINCINNATI, OHIO

TITLE
EXTENSION CYLINDER
ET/HT25/30KX

DATE
01-07-14A
SUPERSEDES
08-20-09

SECTION
C400
21879

21752 ELEVATION CYLINDER



SEAL KIT P/N: 21774



MANUFACTURING, INC.
CINCINNATI, OHIO

TITLE
ELEVATION CYLINDER

ET/HT25/30/36KX(X)

DATE
8-12-09

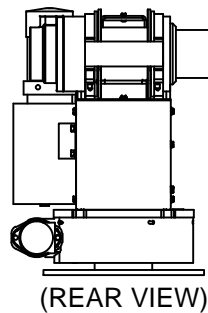
SUPERSEDES
-

SECTION
C400

21773

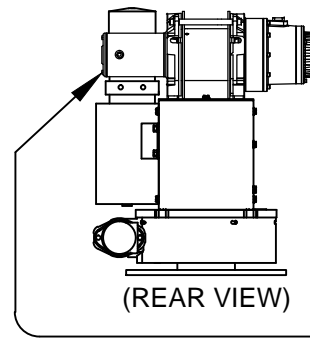
19813 WINCH REPLACEMENT PARTS

WARN DC3000 SERIES-WOUND MOTOR



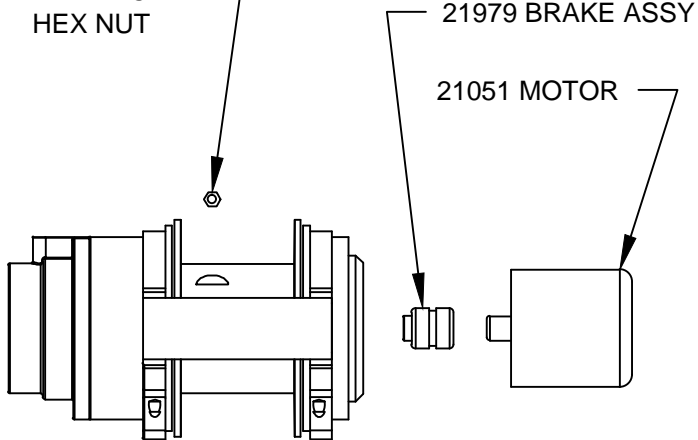
MOTOR ON RIGHT
WHEN VIEWED FROM REAR

COMEUP GTD-3300 PERMANENT MAGNET MOTOR



MOTOR ON LEFT
WHEN VIEWED FROM REAR

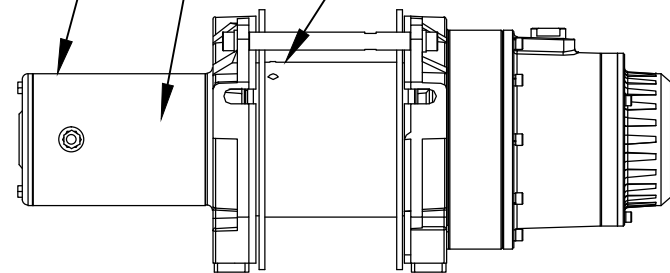
!HNUT-04414 HEX NUT
(WIRE ROPE ANCHOR)
OR EQUIVALENT METRIC
HEX NUT



23915 MOTOR

23918 BRAKE REPLACEMENT KIT

2X SET SCREW
(INCL W/ WINCH)



STARTING SERIAL NUMBERS:

ET25 SERIES	22D000003
ET30 SERIES	21B000001
ET36 SERIES	20B000014



VENCO VENTURO INDUSTRIES LLC
CINCINNATI, OHIO

TITLE

WINCH REPLACEMENT PARTS

ET25/30/36K

DATE

04-26-22E

SUPSEDES

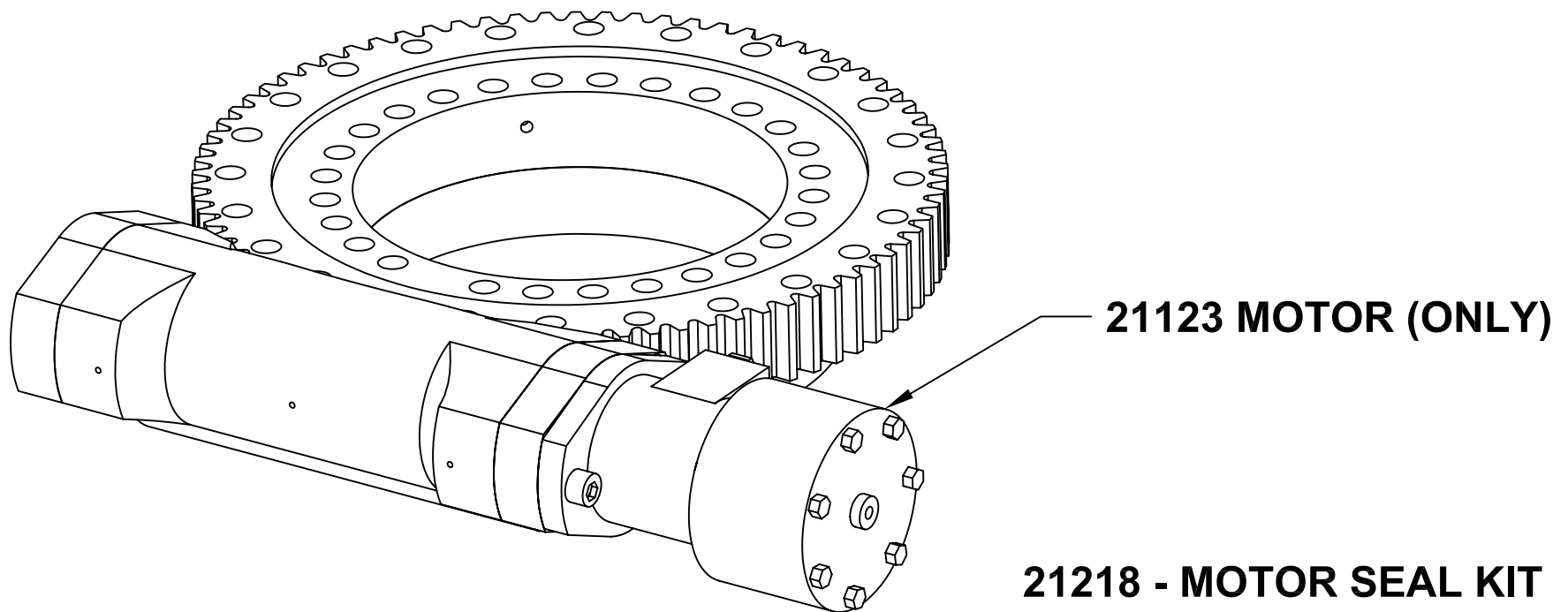
04-13-22D

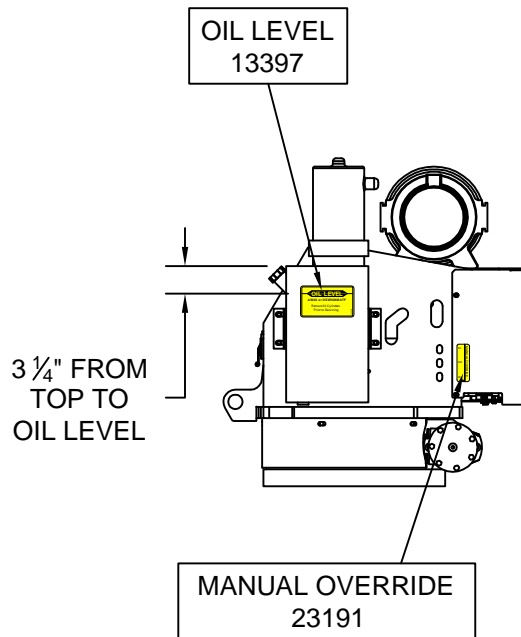
SECTION

C400

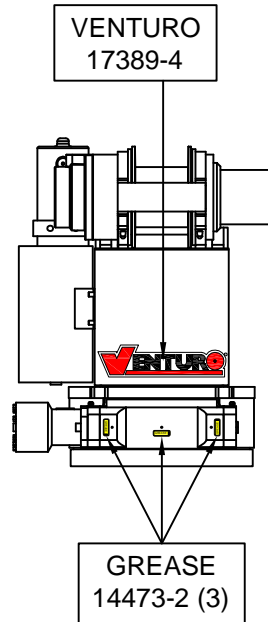
21053

21418 SLEWING SYSTEM REPLACEMENT PARTS

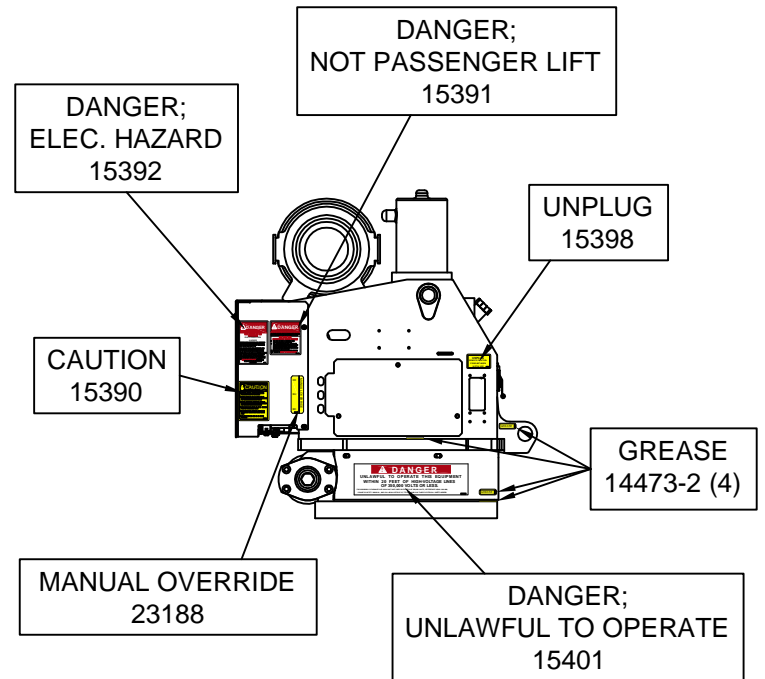




LEFT



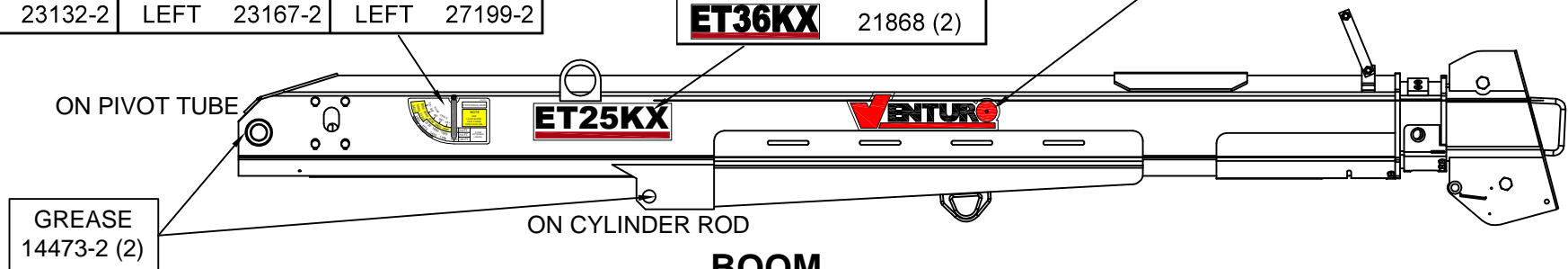
BACK



RIGHT

CAPACITY					
ET25KX		ET30KX		ET36KX	
RIGHT	23132-1	RIGHT	23167-1	RIGHT	27199-1
LEFT	23132-2	LEFT	23167-2	LEFT	27199-2

MODEL	
ET25KX	19743 (2)
ET30KX	23168 (2)
ET36KX	21868 (2)



BOOM



VENCO VENTURO INDUSTRIES LLC
CINCINNATI, OHIO

TITLE
DECAL PLACEMENT

ET25/30/36KX

DATE
05-19-15D

SUPERSEDES
08-08-12C

SECTION
C400

21894

ET25/30/36KX FIELD SERVICE LABEL KITS

21898; FIELD SERVICE LABEL KIT, ET25KX

PART NO.	QTY.	DESCRIPTION
14473-2	9	DECAL; GREASE
17389	2	DECAL; VENTURO, MEDIUM
17389-4	1	DECAL; VENTURO, SMALL
23132-1	1	DECAL; BOOM CAPACITY, RIGHT, ET/HT25KX
23132-2	1	DECAL; BOOM CAPACITY, LEFT, ET/HT25KX
19743	2	DECAL; MODEL NAME, ET25KX
13397	1	DECAL; OIL LEVEL
23188	1	DECAL; MANUAL OVERRIDE, RIGHT
23191	1	DECAL; MANUAL OVERRIDE, LEFT
17813	1	DECAL; OVERLOAD SENSING SYSTEM
16184-1	1	DECAL; HORN RELAY
21899	1	IDWG; FIELD SERVICE LABEL KIT
21894	1	IDWG; DECAL PLACEMENT
INST-23233	1	SAFETY MANUAL, VENTURO CRANES
15397	1	KIT; ACCIDENT PREVENTION SIGNS

21863; FIELD SERVICE LABEL KIT, ET30KX

PART NO.	QTY.	DESCRIPTION
14473-2	9	DECAL; GREASE
17389	2	DECAL; VENTURO LOGO, MEDIUM
17389-4	1	DECAL; VENTURO LOGO, SMALL
23167-1	1	DECAL; BOOM CAPACITY, RIGHT, ET30KX
23167-2	1	DECAL; BOOM CAPACITY, LEFT, ET30KX
23168	2	DECAL; MODEL NAME, ET30KX
13397	1	DECAL; OIL LEVEL
23188	1	DECAL; MANUAL OVERRIDE, RIGHT
23191	1	DECAL; MANUAL OVERRIDE, LEFT
17813	1	DECAL; OVERLOAD SENSING SYSTEM
16184-1	1	DECAL; HORN RELAY
21899	1	IDWG; FIELD SERVICE LABEL KIT LIST
21894	1	IDWG; DECAL PLACEMENT
INST-23233	1	SAFETY MANUAL, VENTURO CRANES
15397	1	KIT; ACCIDENT PREVENTION SIGNS

21866; FIELD SERVICE LABEL KIT, ET36KX

PART NO.	QTY.	DESCRIPTION
14473-2	9	DECAL; GREASE
17389	2	DECAL; VENTURO LOGO, MEDIUM
17389-4	1	DECAL; VENTURO LOGO, SMALL
27199-1	1	DECAL; BOOM CAPACITY, RIGHT, ET36KX
27199-2	1	DECAL; BOOM CAPACITY, LEFT, ET36KX
21868	2	DECAL; MODEL NAME, ET36KX
13397	1	DECAL; OIL LEVEL
23188	1	DECAL; MANUAL OVERRIDE, RIGHT
23191	1	DECAL; MANUAL OVERRIDE, LEFT
17813	1	DECAL; OVERLOAD SENSING SYSTEM
16184-1	1	DECAL; HORN RELAY
21899	1	IDWG; FIELD SERVICE LABEL KIT LIST
21894	1	IDWG; DECAL PLACEMENT
INST-23233	1	SAFETY MANUAL, VENTURO CRANES
15397	1	KIT; ACCIDENT PREVENTION SIGNS



VENCO VENTURO INDUSTRIES LLC
CINCINNATI, OHIO

TITLE

FIELD SERVICE LABEL KIT

ET25/30/36KX

DATE

03-13-23F

SUPERSEDES

08-04-20E

SECTION

C400

21899



VENTURO CRANES LIMITED WARRANTY POLICY

Venturo products are built to last...we guarantee them.

As a purchaser of any new Venturo product covered by warranty, you will receive 1 year of the most complete coverage available...and, at no added cost to you.

1-Year Limited Warranty Policy

This limited policy warrants new products of Venturo to be free from defects in material and workmanship for a period of one (1) year from date of original installation. OEM products or accessories purchased by Venturo as part of or offered with our product will carry the OEM manufacturer's respective warranty. Our warranty covers:

- ***Repair or replacement of product***
- ***Labor to repair or replace product***
- ***Freight to return and/or replace product***

We shall not be liable for any contingent liabilities arising out of the improper function of any products. Warranty shall become void if the product is improperly installed, modified, damaged, abused or used for application other than intended use. There is no warranty of merchantability, fitness for a particular purpose, warranty arising from course of dealing or usage of trade, or any other implied or expressed warranty, except as made specifically herein. This warranty supersedes all previous warranties, written or implied.

Warranty Claims

Venco Venturo Industries LLC will make a good faith effort for prompt correction or other adjustment with respect to any product, which proves to be defective after our inspection and within the warranty period. Before any repairs are attempted or before returning any product, your Venturo Distributor is required to obtain a warranty claim number. This number is necessary for any claim to be considered. To obtain a warranty claim number, Venturo requires the model and serial number. Only authorized Venturo Distributors can perform warranty. For the name and address of your local Venturo Distributor call the **Warranty Claim Department - 513-772-8448**.

WARNING - It is the responsibility of the installer to ensure the installation is completed according to the manufacturer's recommendations, ensure the ultimate user understands how to operate product in a safe manner, and understands the need for regular service and maintenance by an authorized Venturo Distributor. No modifications or alterations may be made to any Venturo product without the expressed written consent of Venco Venturo Industries LLC. Installation of any Venturo product must be done by an authorized Venturo Distributor, to the standards of the industry; including maintenance, service and affixing of all instruction, safety and warning decals. Users should be instructed as to the safe operation at time of delivery. Maintenance, service, operation and safety warning decals are available on request from Venco Venturo Industries LLC.

VENCO VENTURO INDUSTRIES LLC
12110 BEST PLACE | CINCINNATI, OHIO 45241
P: 800-226-2238 | F: 513-326-5427
www.venturo.com