



VENCO®

HOISTS

HT40KX

HR-AAB-PB**

INSTALLATION & OWNER'S MANUAL

Sold and Serviced by:

TABLE OF CONTENTS

HT40KX / Prop Ctrl / W/ Eng Ctrls (HR*AAB-PB**)

SECTION 100 **DESCRIPTION & SPECIFICATIONS**

22737 INSTALLATION DIMENSIONS
18353 MOUNTING DIMENSIONS - BASE PLATE
22341 CAPACITY CHART - HT40KX

SECTION 150 **SAFETY**

15394 VEHICLE & CRANE ELECTRICAL HAZARD INFORMATION
920612 SAFETY & HAZARDS - GENERAL
19217 WINCH SAFETY WARNINGS
22171 DECAL PLACEMENT
22181A SAFETY DECALS DRAWING & LIST
22181B SAFETY DECALS DRAWING & LIST
22181C SAFETY DECALS DRAWING & LIST
22181D SAFETY DECALS DRAWING & LIST

SECTION 200 **INSTALLATION**

22172 CRANE INSTALLATION (PAGE 1 OF 2)
22173 CRANE INSTALLATION (PAGE 2 OF 2)
22345A CRANE OPERATION & MAINTENANCE INSTRUCTIONS (PAGE 1 OF 3)
22345B CRANE OPERATION & MAINTENANCE INSTRUCTIONS (PAGE 2 OF 3)
22174 CRANE OPERATION & MAINTENANCE INSTRUCTIONS (PAGE 3 OF 3)
22168 SAFETY SHUTOFF INSTRUCTIONS
20051 ROTATION STOP LOCATION
22825 22785 HYDRAULIC TANK DIMENSIONS
22809 PTO INSTALLATION
22189 COMPARTMENT DRAWING
17831 INSTALLATION & MOUNTING DIMENSIONS - 17350 PEDESTAL
22245 WIRE ROPE INSTALLATION

SECTION 400 **REPLACEMENT PARTS**

22175 HT40/50KX CRANE REPLACEMENT PARTS DRAWING
22176 HT40/50KX CRANE REPLACEMENT PARTS LIST
22177 HT40/50KX CRANE FASTENER LIST
24571 24550 BOOM REPLACEMENT PARTS DRAWING
24572 24550 BOOM REPLACEMENT PARTS LIST
22822 WINCH REPLACEMENT PARTS DRAWING & LIST
22183 PROP HYDRAULIC SYSTEM COMPONENTS REPLACEMENT PARTS DRAWING
22188 PROP HYDRAULIC SYSTEM COMPONENTS REPLACEMENT PARTS LIST
22185 ELECTRICAL SCHEMATIC - PROPORTIONAL
22125 ELECTRICAL SCHEMATIC - PROP SOCKET WIRING (W/ ENGINE CONTROLS)
22187 HYDRAULIC SYSTEM SCHEMATIC - PROPORTIONAL CONTROL 40/50KX
22073 22065 REPLACEMENT PARTS DRAWING
22684 22685 ANTI-TWO-BLOCK SYSTEM (STANDARD LEFT SIDE MOUNT)
22449 22450 ANTI-TWO-BLOCK SYSTEM (OPTIONAL RIGHT SIDE MOUNT)
22615 ENGINE START/STOP & THROTTLE CONTROL
22783 22784 PTO KIT REPLACEMENT PARTS DRAWING & LIST
▲ 20844 22766-1 FIELD SERVICE LABEL KIT



MFG., INC.
CINCINNATI, OHIO

TITLE
TABLE OF CONTENTS

HT40KX (HR*AAB-PB)**

DATE
6-21-06J

SUPERCEDES
5-11-06H

SECTION
-

22192

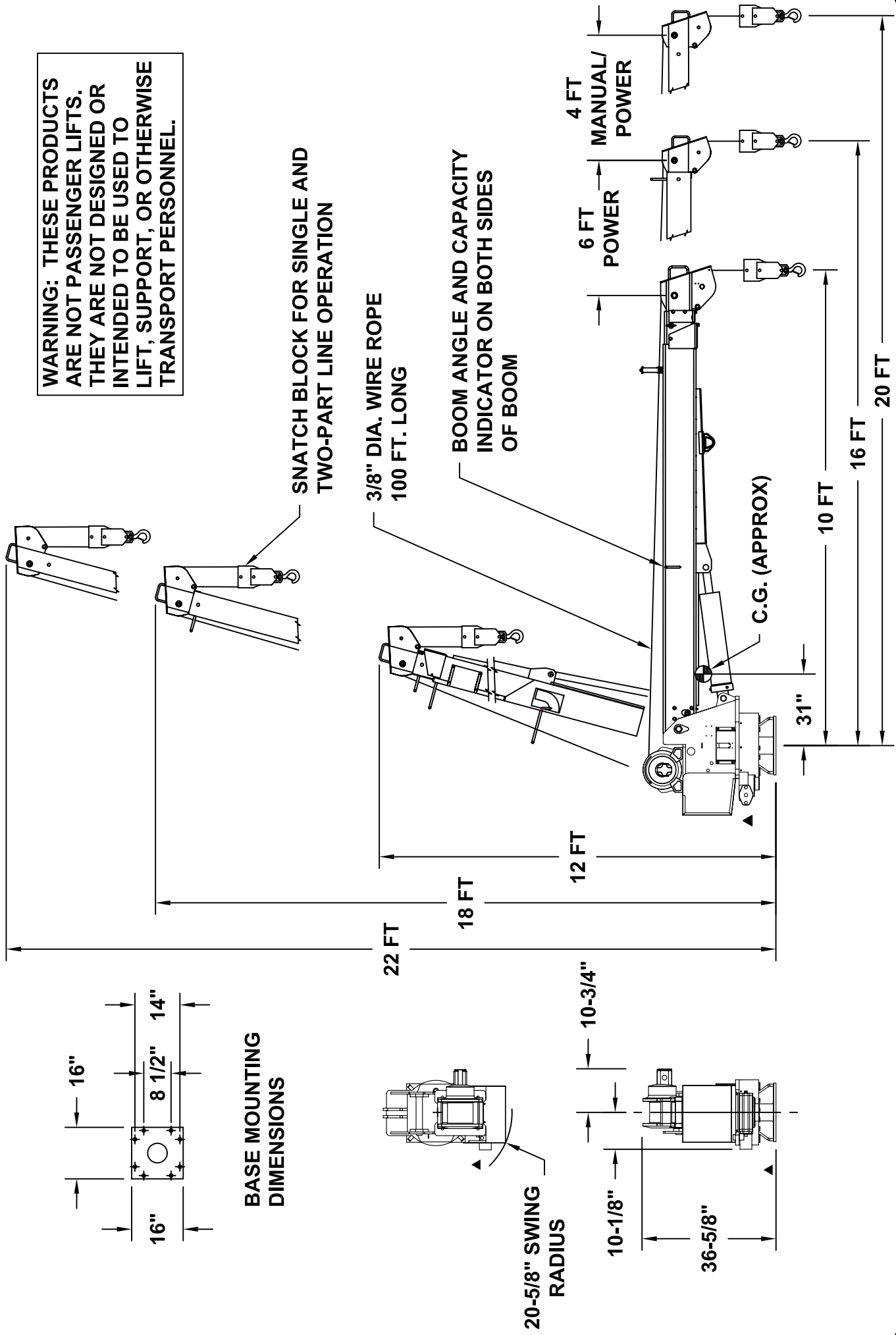
SECTION 100


DESCRIPTION

&

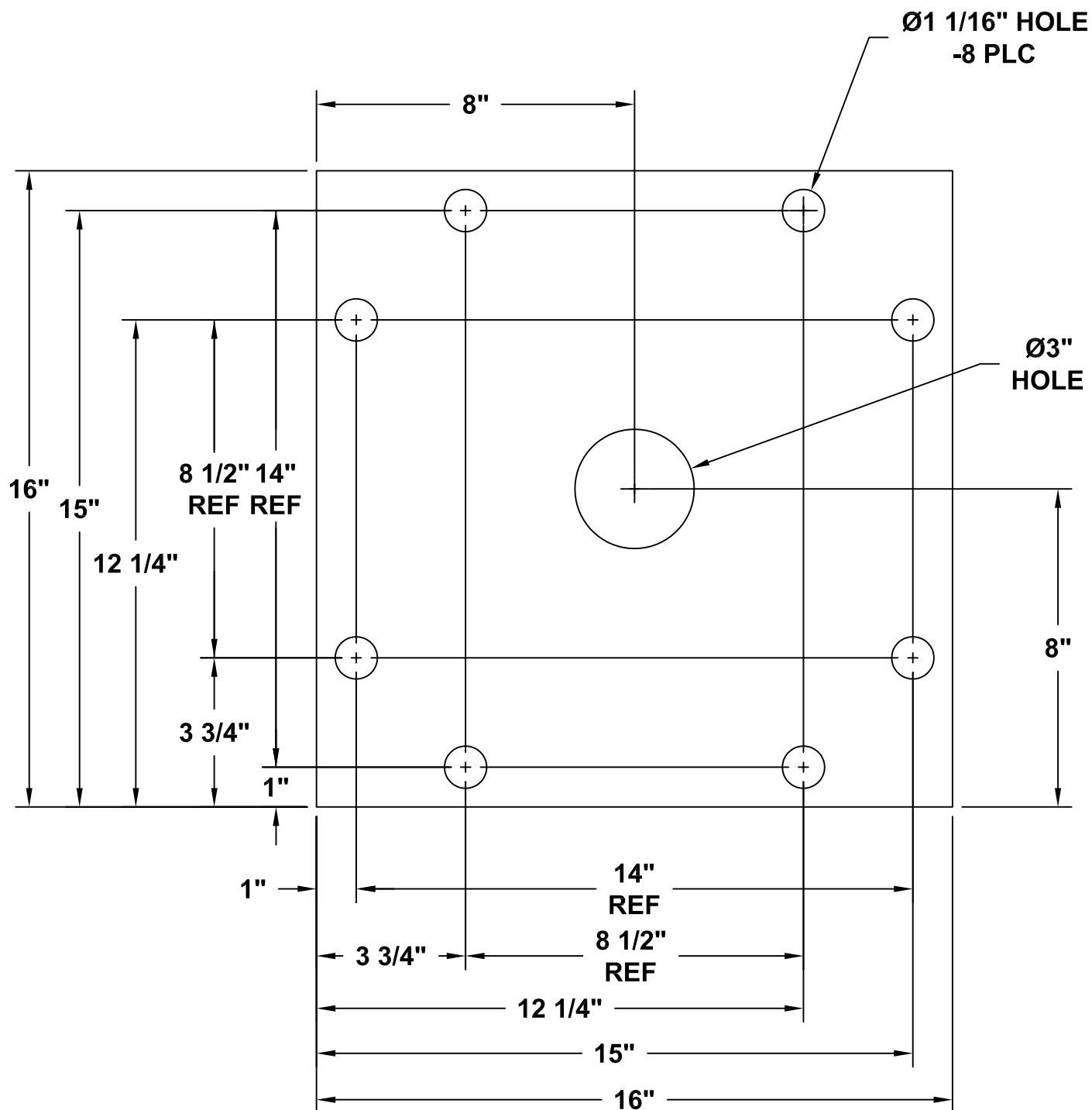
SPECIFICATIONS

WARNING: THESE PRODUCTS ARE NOT PASSENGER LIFTS. THEY ARE NOT DESIGNED OR INTENDED TO BE USED TO LIFT, SUPPORT, OR OTHERWISE TRANSPORT PERSONNEL.



 VENTURO MANUFACTURING, INC. CINCINNATI, OHIO	TITLE INSTALLATION DWG		DATE 10-2-06A	SECTION C100
	HT40KX, HT50KX		SUPERSEDES 3-30-05	22737

▲ HT40/50KX BASE MOUNTING DIMENSIONS



MFG., INC.
CINCINNATI, OHIO

TITLE
▲ BASE MOUNTING DIM

HT40/50KX

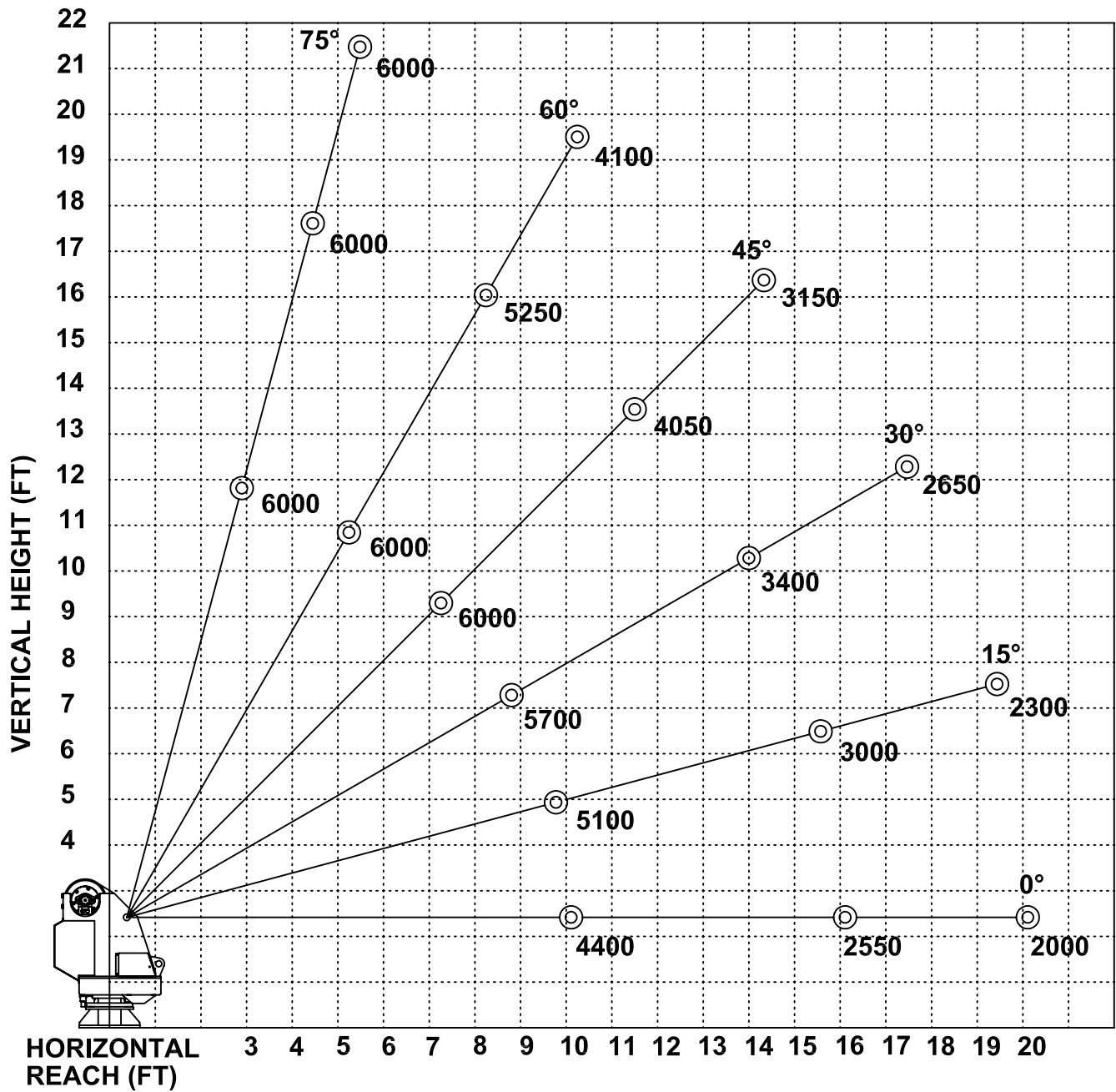
DATE
3-3-05F

SUPERSEDES
5-20-03E

SECTION
C100

18353

HT40KX - 10-16-20 BOOM MAXIMUM CAPACITY CHART



**MUST USE SNATCH BLOCK
FOR LOADS OF 3000 LBS.
AND GREATER**



MFG., INC.
CINCINNATI, OHIO

TITLE
CAPACITY CHART

HT40KX - 10-16-20

DATE
3-3-05C

SUPERSEDES
1-29-98B

SECTION
C100

22341

SECTION 150

SAFETY

VEHICLE & CRANE MOUNTED ELECTRICAL HAZARD SIGN APPLICATION & INFORMATION

ET & HT CRANE SERIES



▲ SIGN NO. 15393A DISPLAYS THE INTERNATIONAL SYMBOL FOR ELECTRICITY AND WARNS OF DANGER FROM AN ELECTRICALLY CHARGED VEHICLE, CRANE, OR LOAD. FOUR ARE RECOMMENDED (ONE FOR EACH SIDE AND ONE FOR EACH END OF VEHICLE) TO BE APPLIED IN LOCATIONS WHICH ARE READILY VISIBLE TO GROUND PERSONNEL.



▲ SIGN NO. 15401 PROVIDES ADDITIONAL WARNING OF LEGAL REQUIREMENTS WHEN OPERATING NEAR HIGH VOLTAGE LINES. THIS SIGN IS PLACED ON THE CONTROL PENDANT SIDE OF BOOM.

REQUIRED MINIMUM CLEARANCES REFERRED TO ON SIGN NO. 15401

REQUIRED CLEARANCES FROM OVERHEAD HIGH-VOLTAGE LINES

NOMINAL VOLTAGE (kV) (PHASE TO PHASE)	MINIMUM REQUIRED CLEARANCE (FEET) *
0 - 50	10
over 50 - 200	15
over 200 - 350	20
over 350 - 500	25
over 500 - 750	35
over 750 - 1000	45

REQUIRED CLEARANCES FROM ENERGIZED HIGH-VOLTAGE CONDUCTORS (WHILE IN TRANSIT)

NOMINAL VOLTAGE (kV) (PHASE TO PHASE)	MINIMUM REQUIRED CLEARANCE (FEET) *
0 - 0.75	4
over 0.75 - 50	6
over 50 - 345	10
over 345 - 750	16
over 750 - 1000	20

* NOTE: ENVIRONMENTAL CONDITIONS SUCH AS FOG, SMOKE, OR PRECIPITATION MAY REQUIRE INCREASED CLEARANCES



MFG., INC.
CINCINNATI, OHIO

TITLE
INSTALLATION DWG

ET & HT CRANE SERIES

DATE
5-15-02H

SUPERCEDES
5-13-97G

SECTION
C150

15394

CRANE SAFETY AND HAZARDS

HT25KX, HT40KX, HT50KX

CAUTIONS

1. INSPECT VEHICLE AND CRANE, INCLUDING OPERATION, PRIOR TO USE DAILY.
2. DO NOT USE THIS EQUIPMENT EXCEPT ON SOLID, LEVEL SURFACE WITH CRANE MOUNTED ON FACTORY-RECOMMENDED TRUCK.
3. BEFORE OPERATING THE CRANE, REFER TO MAXIMUM LOAD (CAPACITY) CHART ON CRANE FOR OPERATING (LOAD) LIMITATIONS.
4. DO NOT OPERATE, WALK, OR STAND BENEATH BOOM OR A SUSPENDED LOAD.
5. ATTACH PENDANT CORD SUPPORT SNAP TO ATTACHMENT POINT BEFORE PLUGGING IN PENDANT.
6. UNPLUG PENDANT AND DISENGAGE PTO SYSTEM WHEN CRANE NOT IN USE.
7. FOR TRAVEL, BOOM MUST BE IN STOWED POSITION.

DANGER

- THIS CRANE IS NOT A PASSENGER LIFT
- IT IS NOT DESIGNED OR INTENDED TO BE USED TO LIFT, SUPPORT, OR OTHERWISE TRANSPORT PERSONNEL.

YOU MUST NOT OPERATE THIS CRANE UNLESS

1. YOU HAVE BEEN TRAINED IN THE SAFE OPERATION OF THIS CRANE
AND
2. YOU KNOW AND FOLLOW THE SAFETY AND OPERATING RECOMMENDATIONS CONTAINED IN THE MANUFACTURER'S MANUALS, YOUR EMPLOYER'S WORK RULES, AND APPLICABLE GOVERNMENT REGULATIONS. AN UNTRAINED OPERATOR SUBJECTS HIMSELF AND OTHERS TO DEATH OR SERIOUS INJURY.

ELECTROCUTION HAZARD

- THIS MACHINE IS NOT INSULATED.
- MAINTAIN SAFE CLEARANCES FROM ELECTRICAL LINES AND APPARATUS.
- YOU MUST ALLOW FOR BOOM SWAY, ROCK OR SAG, AND ELECTRICAL LINE AND LOADLINE SWAYING.
- THIS LIFTING DEVICE DOES NOT PROVIDE PROTECTION FROM CONTACT WITH OR PROXIMITY TO AN ELECTRICALLY CHARGED CONDUCTOR.
- YOU MUST MAINTAIN A CLEARANCE OF AT LEAST 10 FEET BETWEEN ANY PART OF THE CRANE, LOADLINE, OR LOAD, AND ANY ELECTRICAL LINE OR APPARATUS CARRYING UP TO 50,000 VOLTS. ADDITIONAL CLEARANCE IS REQUIRED FOR VOLTAGES IN EXCESS OF 50,000 VOLTS. REFER TO DRAWING 15394 FOR ADDITIONAL INFORMATION.
- **DEATH OR SERIOUS INJURY** WILL RESULT FROM CONTACT OR INADEQUATE CLEARANCE.



MFG., INC.
CINCINNATI, OHIO

TITLE
INSTALLATION DWG

HYDRAULIC CRANES

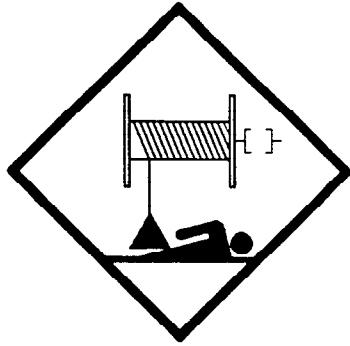
DATE
5-13-97A

SUPERCEDES
6-12-92

SECTION
C150

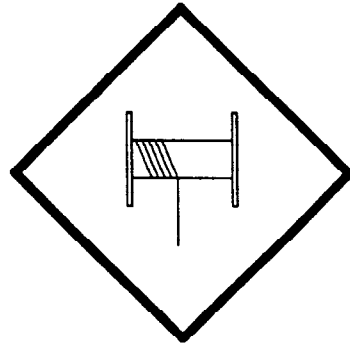
920612

WINCH SAFETY WARNINGS



DANGER

**DO NOT DISENGAGE
WINCH UNDER LOAD**



DANGER

**THE LAST FIVE
WRAPS OF WIRE ROPE
MUST BE LEFT ON
THE DRUM TO ASSIST
THE WIRE ROPE CLAMP IN
HOLDING THE LOAD**



WARNING

**WINCHES ARE NOT
TO BE USED FOR
THE LIFTING OR
MOVING OF
PERSONS**



**MFG., INC.
CINCINNATI, OHIO**

**TITLE
INSTALLATION DWG**

HT CRANES

**DATE
5-26-98B**

**SUPERCEDES
10-17-97A**

**SECTION
C150**

I19217

15581
ATTACHMENT

15398
UNPLUG
REMOTE

15401
UNLAWFUL
TO OPERATE

22499
KNOW
YOUR
SIGNALS

RIGHT

14473-1
OIL

15391
DANGER
(NOT
PASSENGER
LIFT)

15392
DANGER
ELEC.
HAZARD

14473-2
GREASE
2 PLACES

20834
OVERRIDE
INST
INSIDE

15390
CAUTION

LEFT

MANUAL OVERRIDE
19314-2 NON-PROP
22768-2 PROP

MANUAL OVERRIDE
19314-1 NON-PROP
22768-1 PROP

SHUT OFF DECAL
19315-1 MANUAL
19315-2 PROPORTIONAL

INSIDE OF REAR COVER

MODEL NO.
19746 - HT40
19747 - HT50

CAPACITY
DECAL MODEL PART NO.
RIGHT HT40 22342-1
LEFT HT40 22342-2
RIGHT HT50 22352-1
LEFT HT50 22352-2

19788
PROPORTIONAL CONTROL
* PROPORTIONAL ONLY


22496
LARGE
VENTURO

BOOM

17389-4
SMALL
VENTURO

14473-2
GREASE

BACK



MANUFACTURING, INC.
CINCINNATI, OHIO

TITLE
DECAL PLACEMENT
HT40/50KX

DATE
10-3-06C

SECTION
C150

SUPERSEDES
9-11-06B

22171

PART NO.: 15398

DECAL: UNPLUG REMOTE CONTROL

FUNCTION: To inform the operator to unplug remote control when not being used.

QUANTITY: 1

PLACEMENT: Right side of housing.



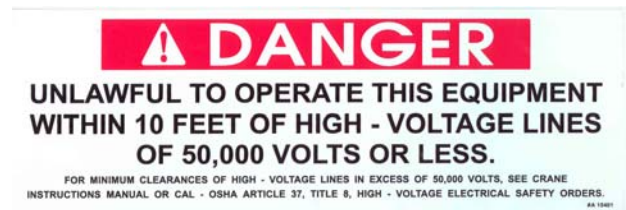
PART NO.: 15401

DECAL: UNLAWFUL TO OPERATE

FUNCTION: To inform the operator of proper operation in vicinity of power lines.

QUANTITY: 1

PLACEMENT: Right side of housing.



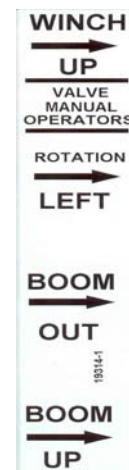
PART NO.: 19314-1

DECAL: MANUAL OVERRIDE (NON-PROP)

FUNCTION: To inform the operator of manual override locations.

QUANTITY: 1

PLACEMENT: Inside of rear cover.



PART NO.: 19314-2

DECAL: MANUAL OVERRIDE (NON-PROP)

FUNCTION: To inform the operator of manual override locations.

QUANTITY: 1

PLACEMENT: Inside of rear cover.



MFG., INC.
CINCINNATI, OHIO

TITLE

DECAL DRAWING & LIST

DATE

12-14-05A

SECTION

C150

HT40/50KX

SUPERSEDES

5-11-05

22181A

PART NO.: 19315-1

DECAL: SHUT OFF (NON-PROPORTIONAL)

FUNCTION: To show the operator how to override master shut off valve.

QUANTITY: 1

PLACEMENT: Inside rear cover.



PART NO.: 19315-2

DECAL: MANUAL OVERRIDE (PROPORTIONAL)

FUNCTION: To show the operator how to override proportional valve.

QUANTITY: 1

PLACEMENT: Inside rear cover.



PART NO.: 22768-1

DECAL: MANUAL OVERRIDE

FUNCTION: To inform the operator of manual override locations.

QUANTITY: 1

PLACEMENT: Inside rear cover.



PART NO.: 22768-2

DECAL: MANUAL OVERRIDE

FUNCTION: To inform the operator of manual override locations.

QUANTITY: 1

PLACEMENT: Inside rear cover.



MFG., INC.
CINCINNATI, OHIO

TITLE
DECAL DRAWING & LIST

HT40/50KX

DATE
12-14-05B

SUPERSEDES
9-9-05A

SECTION
C150

22181B

PART NO.: 15390

DECAL: CAUTION - INSPECT VEHICLE & CRANE

FUNCTION: To inform the operator of key operating requirements.

QUANTITY: 1

PLACEMENT: Left side of rear cover.



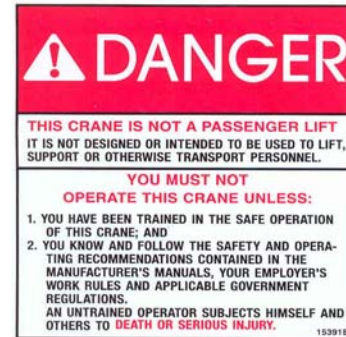
PART NO.: 15391

DECAL: DANGER - NOT PASSENGER LIFT

FUNCTION: To inform the operator not to lift, support or transport personnel, and to ensure that crane operator is adequately trained.

QUANTITY: 1

PLACEMENT: Left side of rear cover.



PART NO.: 15392

DECAL: DANGER - ELECTROCUTION HAZARD

FUNCTION: To inform the operator that the machine (crane) represents an electrocution hazard should it come too near or in contact with electrical voltage source.

QUANTITY: 1

PLACEMENT: Left side of rear cover.



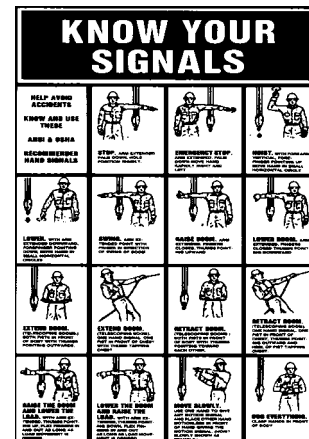
PART NO.: 22499

DECAL: KNOW YOUR SIGNALS

FUNCTION: To inform the operator of proper signals.

QUANTITY: 1

PLACEMENT: Right side of rear cover.



MFG., INC.
CINCINNATI, OHIO

TITLE
DECAL DRAWING & LIST

HT40/50KX

DATE
9-11-06B

SUPERSEDES
9-9-05A

SECTION
C150

22181C

PART NO.: 20834
DECAL: FOR MANUAL OVERRIDE
FUNCTION: To inform the operator of locations
of manual override instructions.
QUANTITY: 1
PLACEMENT: Left side of rear cover.



▲
PART NO.: 17389-4
DECAL: SMALL VENTURO
FUNCTION: To show manufacturer of crane.
QUANTITY: 1
PLACEMENT: Rear cover.



MFG., INC.
CINCINNATI, OHIO

TITLE	DATE	SECTION
DECAL DRAWING & LIST	9-11-06A	C150
HT40/50KX	SUPERSEDES 12-15-05	22181D

SECTION 200

INSTALLATION



CRANE INSTALLATION

HT40KX, HT50KX

BODY REINFORCEMENT

The truck body must be reinforced and outriggers provided to withstand the combined loads resulting from lifting and the weight of the crane and boom.

The maximum combined overturning moment for the HT40KX is 45,000 ft. lbs. and for the HT50KX is 55,000 ft. lbs.

The maximum vertical load for the HT40KX is 7900 lbs. and for the HT50KX is 9900 lbs.

CRANE MOUNTING

The crane base plate or mounting pedestal must be bolted to the body reinforcing plate with eight (8) grade five (5) bolts of 1" dia. with either coarse or fine threads. A 7" dia. hose clearance hole must be cut in this plate to allow the hoses to swing and coil freely.

ROTATION POSITIONING

The HT cranes are shipped with the boom rotated as shown on drawing 20051. It can be in any position that pleases the user since the boom can always reach the storage and travel position by rotating one way or the other.

HYDRAULIC CONNECTIONS

The crane is furnished with a pressure and a return hose that come down through the center of the housing. Included in the installation kit are two hydraulic swivels and two more hoses.

These hoses and swivels are to be arranged in the compartment or pedestal below the crane as shown on drawing 20698 (non-proportional), or 22182 (proportional) using the angle bulkhead fittings also furnished in the installation kit.

These hoses are to be connected in a relaxed position while the crane is at the midpoint of the 400 degree rotation range -- regardless of the final position of the boom during storage/travel.

The bulkhead fittings may be located on any side of the compartment relative to the middle of rotation position.

NOTE: If you purchased one of Venturo's hydraulic packages (P/N 19294-X.XXX), you will have received our pressure gauge kit. This kit includes a gauge, hose and bulkhead "T" fitting and should be installed on the pressure hose.



MFG., INC.
CINCINNATI, OHIO

TITLE
INSTALLATION DWG

HT40KX, HT50KX

DATE
5-13-05

SUPERCEDES
-

SECTION
C200

22172

ELECTRICAL CONNECTIONS

A 25 ft. electrical power lead - intended for 12V DC only - also comes down through the center of the quill with the hoses. This lead should be looped in the compartment so that it remains relaxed throughout the 400 degree rotation of the crane.

A 15amp circuit breaker is mounted on the crane and protects the crane's internal wiring and solenoid coils. The 15amp circuit breaker does not protect the 25 foot electrical power lead. For added protection, the 25 ft. lead can be connected to a 15-20 amp protected circuit that, if possible, is powered only when the vehicle engine is running

HYDRAULIC FLUID

<u>Average Climate</u>	<u>Type of Oil</u>
Cold to Moderate	ISO Grade AW 46
Warm to Hot	ISO Grade AW 68

The fluid should have the highest anti-wear characteristics and treated to inhibit rust and oxidation.

HYDRAULIC HOSES & LINES

The minimum sizes for lines and hoses are as follows:

	NON-PROP	PROP
PRESSURE	3/8"	1/2"
RETURN	1/2"	5/8"
SUCTION	3/4"	1-1/4"

 ▲

RESERVOIR

The PTO reservoir should have a capacity of 25 gallons fitted with 100 mesh suction screen, 10 micron return line filter, and filler/breather cap. ▲

PTO PUMP

The PTO pump should be sized to allow an engine idle speed range that will deliver approximately 2.5 GPM for the HT40KX standard (non-proportional), 12.0 GPM for the HT40KX proportional, 3.0 GPM for the HT50KX standard or 12.0 GPM for the HT50KX proportional. The crane's relief pressure is set at 3000 psi.

PTO START-UP

Before connecting the PTO system to the crane pressure and return hoses, connect the PTO pressure and return lines together at the bulkhead. Operate the PTO system for about two (2) minutes per gallon of reservoir capacity (in this case 20 minutes) to flush out the lines and filter all the fluid several times.

ENGINE START/STOP & THROTTLE CONTROL

If your crane was purchased with optional engine start/stop and throttle control, refer to drawing 22615 in the replacement parts section for further information.



MFG., INC.
CINCINNATI, OHIO

TITLE
INSTALLATION DWG

HT40KX, HT50KX

DATE
2-20-06A

SUPERCEDES
5-13-05

SECTION
C200

22173

CRANE OPERATION AND MAINTENANCE INSTRUCTIONS

HT40KX, HT50KX

SAFETY

Before operating this crane, read and understand these instructions, the 920612 Crane Safety and Hazards Information Sheet, and review all safety & instruction labels on the crane.

CRANE INSPECTION

Before operating this crane, inspect for wear, damage, or oil leakage. After the wire rope has been run out, check for wear, kinks, and broken strands. Check the hook and safety latch for damage. Correct any problems before using the crane.

CAPACITY

Before operating this crane, review the capacity charts on the sides of the boom to relate the load to be lifted to the boom length and angle. The boom angle is shown by a gravity arrow.

SNATCH BLOCK

If the load exceeds 3000 lbs.-HT40KX or 4000 lbs.-HT50KX or if reduced winching speed for better control of smaller loads is required, use the snatch block to rig the crane for two part line operation.

CONTROLS

This crane is operated by a remote control pendant. The pendant should be unplugged and stored in a compartment when the crane is not in use.

Before plugging the pendant in, inspect the plug, socket, cord, pendant head, and switches for damage. Actuate all four switches both ways to verify that they all have the same feel and sound and that they return to the center position.

Plug the pendant into the socket on the right side of the crane and snap the strain relief tether to the crane housing.

PTO SYSTEM

Check the hydraulic fluid level in the PTO system reservoir. Engage PTO and set the engine idle speed to provide the desired hydraulic flow rate per the PTO system instructions. A lower idle setting may be used for more delicate spotting of loads if required.

CRANE OPERATION

Use "Winch Down" to release tension on the wire rope to unhook it from the storage tie down position.

Use "Boom Up" to elevate the boom from the boom rest position.

Avoid repeated rapid reversals of the control switches. This can cause the load to swing.

Check all control functions to see that they are working as described in the following section.



MFG., INC.
CINCINNATI, OHIO

TITLE
INSTALLATION DWG

HT40KX, HT50KX

DATE
8-12-99B

SUPERCEDES
7-17-97

SECTION
C200

22345a

CONTROL FUNCTIONS

WINCH "UP" and "DOWN" - Raises and lowers the load with the winch.

BOOM "UP" and "DOWN" - Raises and lowers the boom elevation angle. The boom elevates from 8 degrees below horizontal to 75 degrees above horizontal.

BOOM "OUT" and "IN" - Extends and retracts the boom. The boom hydraulic extension stroke is 6 ft.

ROTATION "L" and "R" - Controls the left and right direction of the crane rotation. The crane rotation is limited to 400 degrees.

POWER - (Non Proportional Systems) Energizes safety shutoff valve. See page 22328 for detailed operations instructions and warnings.

TRIGGER (Proportional Systems Only) - Varies the flow rate delivered to the crane valve. The farther the trigger is pulled, the faster the selected crane function operates.

OVERLOAD SENSING SYSTEM

This crane is equipped with an Overload Sensing System. If the capacity of the crane is exceeded, the "Winch Up", "Boom Down", and "Boom Out" functions will be shut down. The "Winch Down", "Boom Up", and "Boom In" functions will continue to operate and can be used to relieve the overload condition. The "Rotation" function also will continue to operate.

For crane models HT25 serial numbers 80157, HT40 serial numbers 84092 and HT50 serial numbers 85086 and below, the Overload system is inoperative if the boom elevation is at the bottom or top limit of travel. To relieve this condition, raise or lower the boom slightly before lifting the load. Cranes with serial numbers above the aforementioned have been modified to allow the Overload system to remain active at the top of boom travel.

TWO-BLOCK SENSING SYSTEM

This crane is equipped with an anti two-block device that is mounted at the tip of the boom. If the snatch block/overhaul weight contacts the device the "Winch Up", "Boom Down", and "Boom Out" functions are disabled. The "Winch Down", "Boom Up", and "Boom In" functions will continue to operate and can be used to relieve the two-block condition. Refer to Drawing 22449 for replacement parts and configuration information.

MANUAL TELESCOPIC BOOM

The 10 to 20 ft. boom has a 4 ft. manual telescoping section in addition to the 6 ft. power extension. A pin locks the manual extension into either the extended or retracted position.

▲ POWER TELESCOPIC BOOM

The 10 to 20 ft. boom has a 4 ft. power telescoping section in addition to the 6 ft. power extension.

TRUCK SETUP & OUTRIGGERS

1. The truck should be parked on ground that is as level and as firm as possible when using the crane.
2. The center of the crane should be positioned close enough to the job so that it can be operated at a reach that puts the load within the rated capacity of the crane.



MFG., INC.
CINCINNATI, OHIO

TITLE
INSTALLATION DWG

HT40KX, HT50KX

DATE
3-4-03E

SUPERCEDES
11-3-00D

SECTION
C200

22345b

3. Set the vehicle parking brake and put the vehicle transmission in "park" if it is an automatic.
4. Deploy the outriggers to help stabilize the vehicle against rocking or overturning when lifting with the crane.

PREPARATION FOR TRAVEL

1. Return the outriggers to the stowed position. Install and secure all pins.
2. Stow the crane boom in the boom support.
3. Hook the winch line to a tie down point on the body or pedestal and apply tension.
4. Disengage the PTO pump and idle speed control.
5. Unplug the control pendant and store in a body compartment or the cab.

MAINTENANCE

The crane requires only periodic lubrication. As a standard procedure, this can be done at the time the vehicle is serviced.

The winch planetary gearbox lube should be maintained at the level plug.

To ensure optimal winch performance, the following lube schedule and lube specifications should be followed:

Initial Change - after 6 weeks or 10 hours of operation.

Periodic Change - on an annual basis or every 50 hours of operation.

<u>Temp Range (°F)</u>	<u>Winch Hydraulic Oil</u>
120 to 10	SAE 50
40 to -25	75W90
30 to -50	Conoco DN600 or equivalent

Service grease fittings and rotation gear with molybdenum-disulfide graphite-filled lithium-based extreme pressure grease.

Grease fitting locations:

- Boom pivot at rear of boom
- Speed reducer (2 fittings)
- Elevation cylinder tail clevis
- Bottom of Swing Bearing (2 fittings)

Remove rear cover and check all hydraulic tube and hose fittings for tightness.

Check electrical connections for looseness and corrosion.



MFG., INC.
CINCINNATI, OHIO

TITLE
INSTALLATION DWG

HT40KX, HT50KX

DATE
5-13-05

SUPERCEDES
-

SECTION
C200

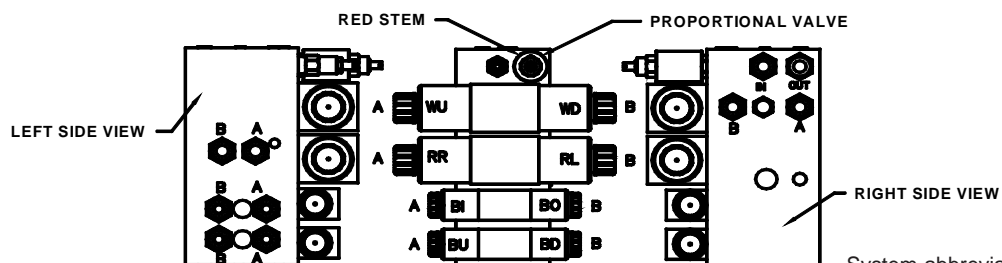
22174

EXPLANATION OF HYDRAULIC VALVE SYSTEM

OVERVIEW

This proportional crane utilizes a proportional valve, which controls the rate at which the hydraulic fluid flows through the valve bank. When the proportional valve is fully closed, hydraulic fluid bypasses the valve bank and returns directly to the tank. When the proportional valve is fully open, hydraulic fluid cycles through the valve bank and allows the crane to function at full speed. When the proportional valve is at any setting between, a portion of the fluid is allowed through the valve bank, with the remainder returning directly to the tank.

The four crane functions (winch, rotation, boom elevation, and boom extension) are controlled by four separate valve sections. Each valve section has two solenoid coils (and two manual overrides) which control the direction that the function operates (e.g. winch up vs. winch down). For a given crane function and direction (e.g. winch up) the solenoid coil and the associated manual override lie on the same side of the valve bank (both “push”).



System abbreviations are as follows:

WD – Winch Down	WU – Winch Up
RR – Rotation Right	RL – Rotation Left
BI – Boom In (Ext.)	BO – Boom Out (Ext.)
BD – Boom Down (Elev.)	BU – Boom Up (Elev.)

MANUAL OVERRIDE SYSTEM

Should an electrical failure occur, your Venturo crane can be operated manually. **The manual overrides are intended for emergency use only and should not be used for normal operation.**

To operate in manual override mode:

- Override the proportional valve by turning the red stem on the valve as stated below.
 - For override operation, rotate stem clockwise (the farther the stem is turned the faster the crane will operate).
 - To return to normal operation, rotate the stem counterclockwise until it stops.
- Determine the coil/override associated with the function you wish to operate, then insert a small diameter object (an allen wrench works well) into the detent on the end of the valve stem and press firmly inward. For example, pushing the stem labeled A on the first bank (refer to the illustration) will actuate winch up.

Warning! For normal crane operation, the proportional valve must be in the “normal” position (as described above). To verify “normal” operation, you may set the pendant (or radio) control aside and actuate a single crane function by pushing “in” on any of the manual override pins, located at the ends of each function control valve. If that function operates, the proportional valve is still in manual override. Check the position of the proportional valve “red thumb screw” to insure that it is fully counterclockwise.

EMERGENCY STOP

In the unlikely event that a function of the crane does not stop once the function’s toggle switch is released, the Proportional crane can be stopped by releasing the trigger.



MFG., INC.
CINCINNATI, OHIO

TITLE
HYDRAULIC SYSTEM

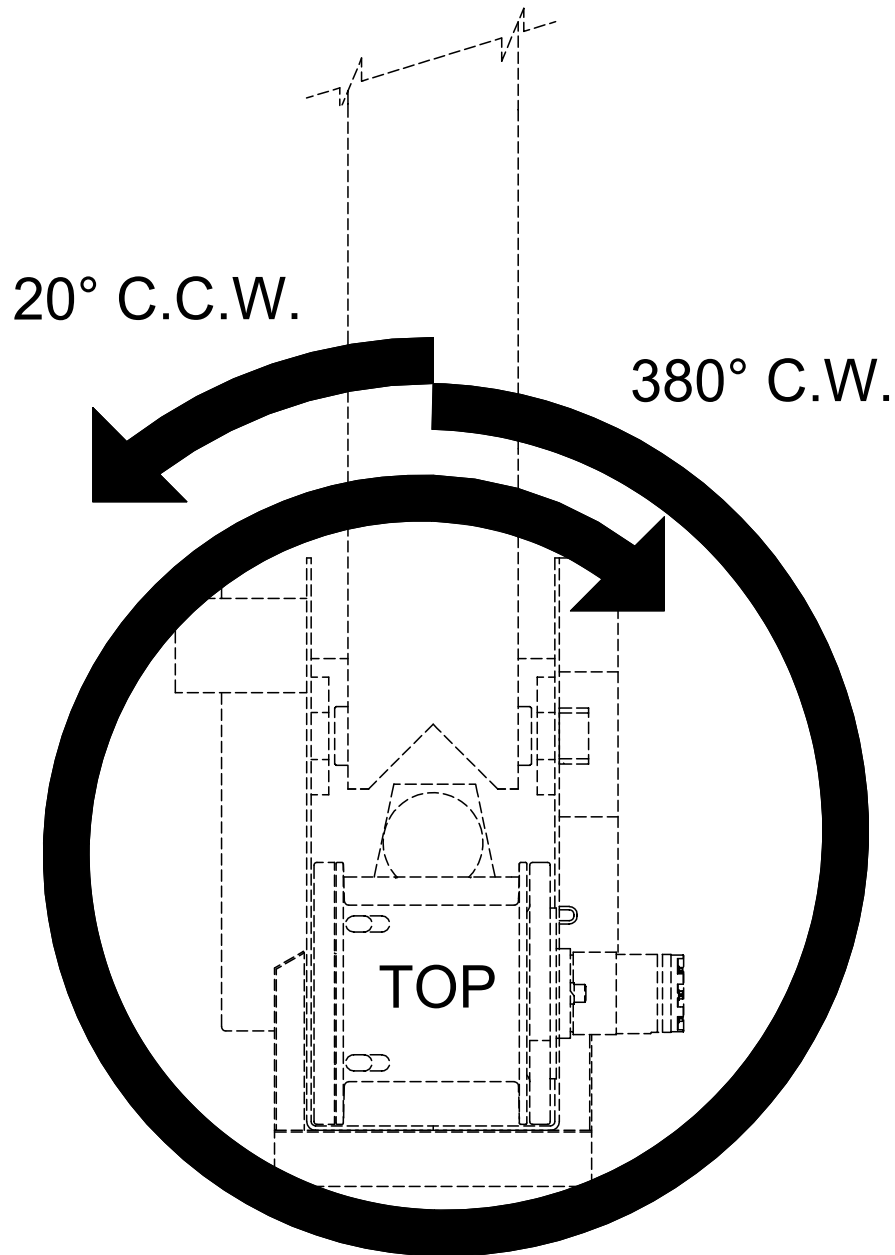
HT40/50 - PROP

DATE
5-26-05

SUPERCEDES
-

SECTION
C200

22168



This Venturo crane is shipped with the rotation orientation as shown above. To change the orientation rotate crane base prior to mounting to suit your application.



MFG., INC.
CINCINNATI, OHIO

TITLE
ROTATION STOP LOCATION

ET/HT25, HT40/50

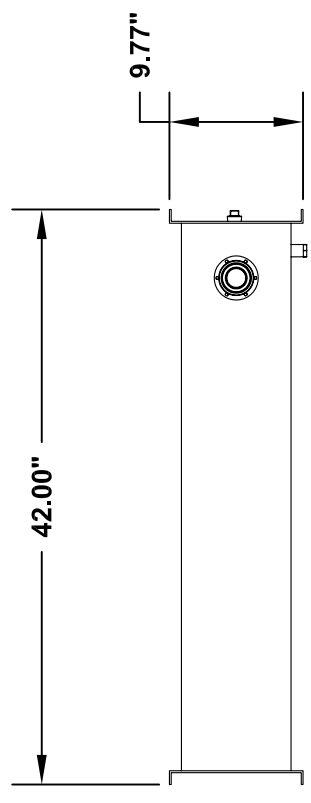
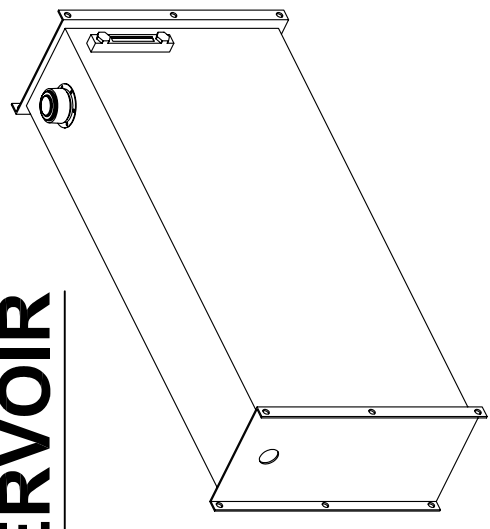
DATE
7-31-02A

SUPERSEDES
10-26-99

SECTION
-

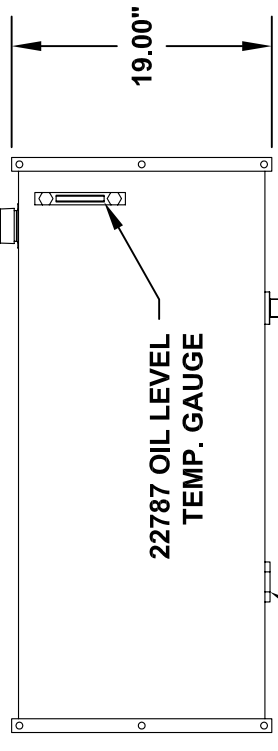
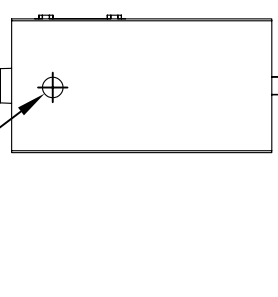
20051

22785 BULKHEAD MOUNT OIL RESERVOIR



22789 TANK FILLER
BREATHER ASSEMBLY

H5406-12
3/4" NPT PIPE PLUG

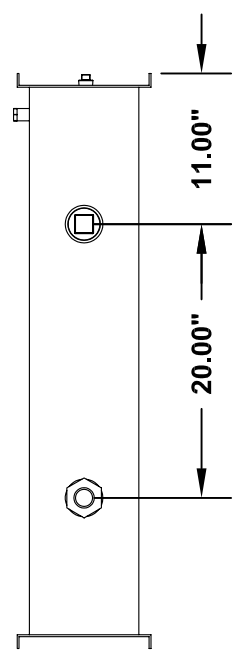


19.00"

22787 OIL LEVEL
TEMP. GAUGE

H5406-32
2" NPT PIPE PLUG

22788 IN TANK
SUCTION STRAINER



20.00"

11.00"

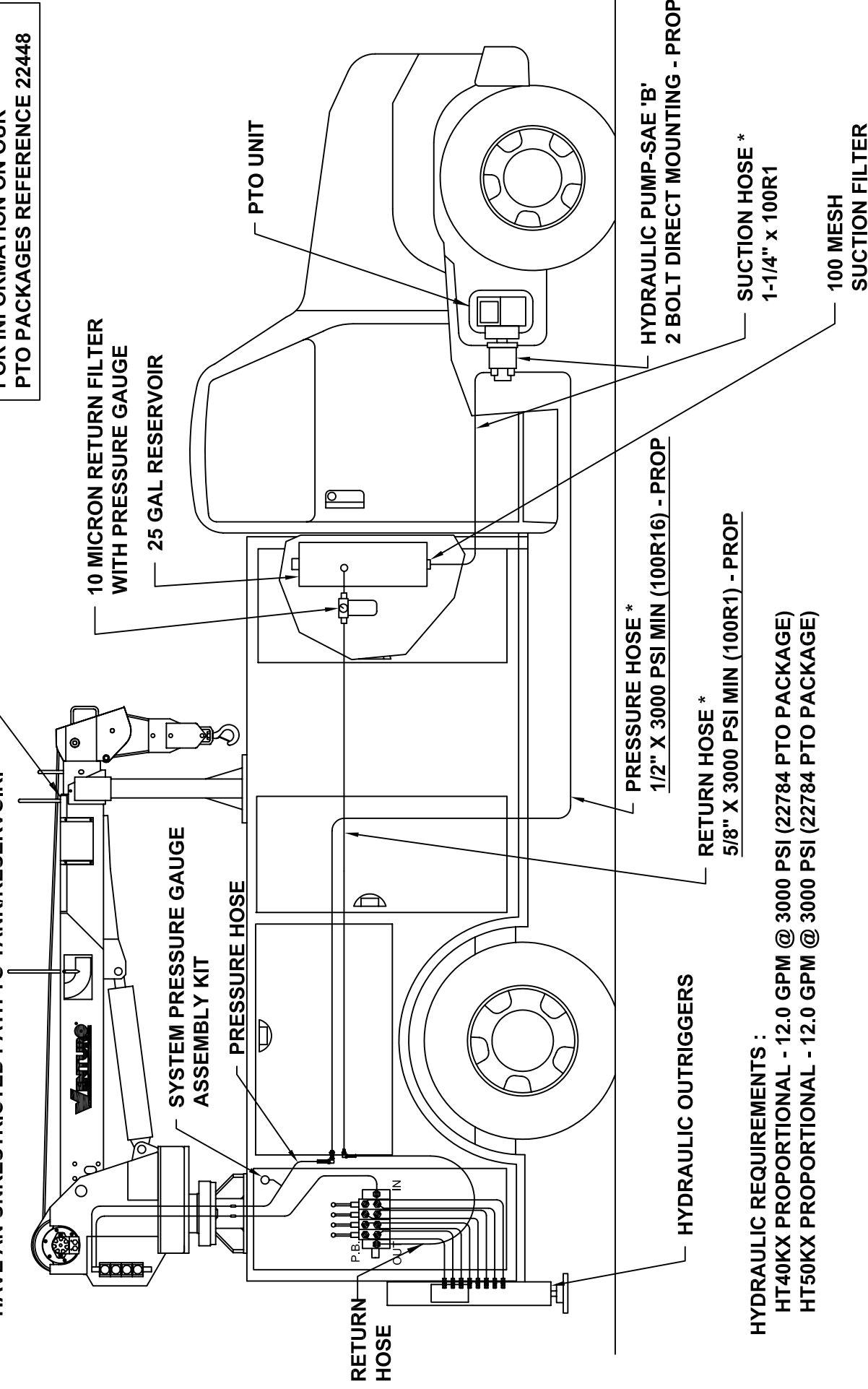
TITLE	25 GALLON HYDRAULIC TANK		DATE	SECTION
	-		3-7-06	-
-		SUPERSEDES		22825



CAUTION: THE RETURN LINE FROM THE CRANE MUST HAVE AN UNRESTRICTED PATH TO TANK/RESERVOIR.

HT40/50KX PROPORTIONAL CRANE

FOR INFORMATION ON OUR
PTO PACKAGES REFERENCE 22448



HYDRAULIC REQUIREMENTS :

HT40KX PROPORTIONAL - 12.0 GPM @ 3000 PSI (22784 PTO PACKAGE)

HT50KX PROPORTIONAL - 12.0 GPM @ 3000 PSI (22784 PTO PACKAGE)

SEE INSTALLATION INSTRUCTIONS 22344 (2 PAGES).

* HOSES OR FITTINGS BETWEEN PUMP, RESERVOIR, AND CRANE NOT INCLUDED.



MANUFACTURING, INC.
CINCINNATI, OHIO

TITLE

INSTALLATION DWG

DATE

2-20-06

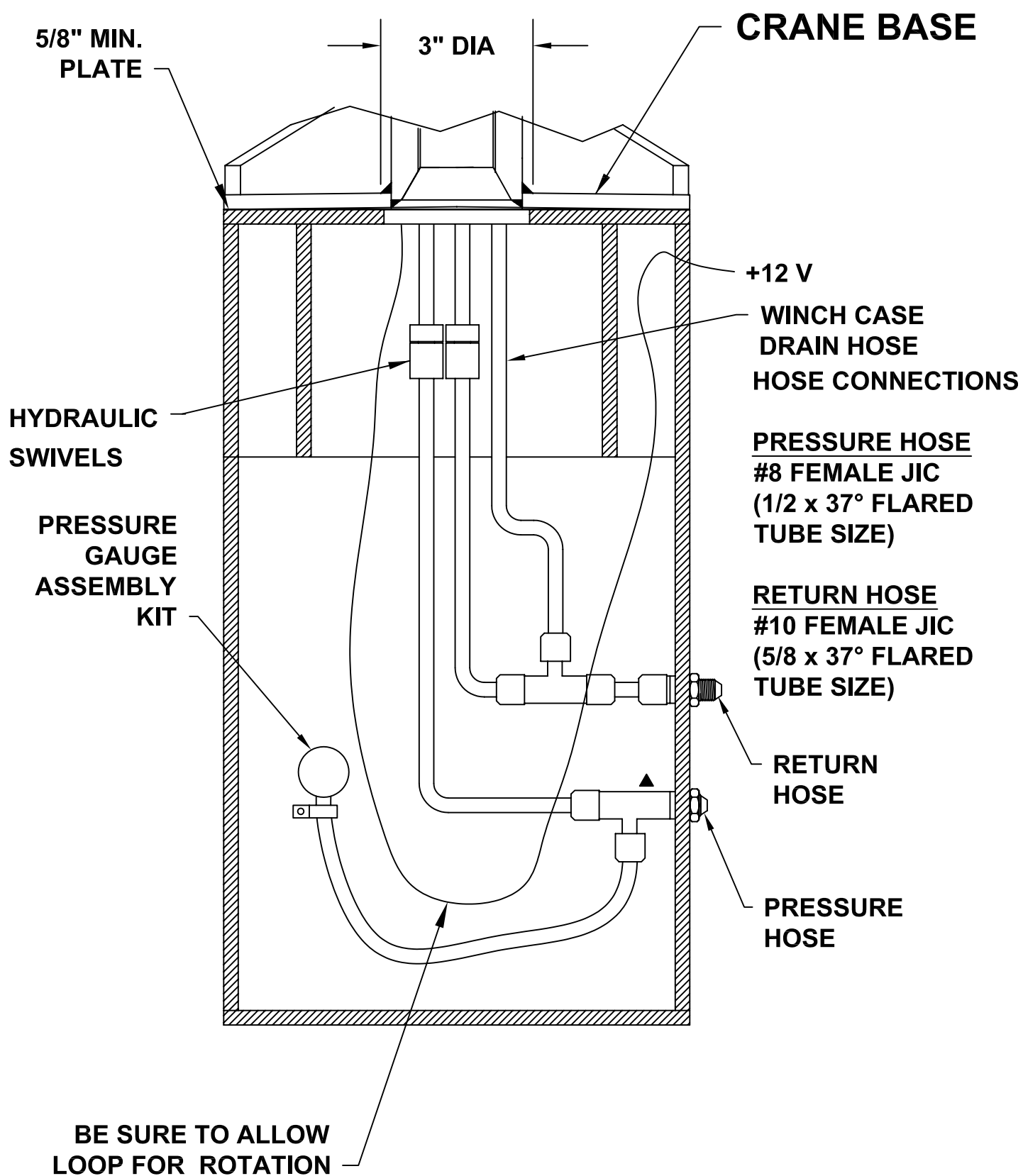
SECTION

C200

SUPERSEDES

PTO INST - HT40/50 (PROPORTIONAL)

22809



MFG., INC.
CINCINNATI, OHIO

TITLE
CRANE & HOSE INST.

HT40/50KX - PROP

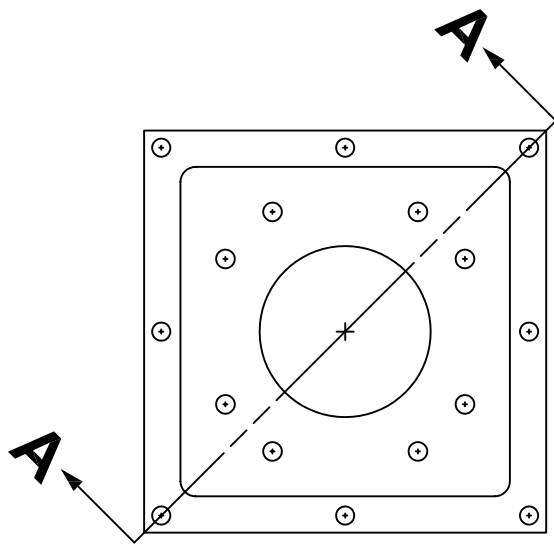
DATE
10-5-06A

SUPERSEDES
5-26-05

SECTION
C200

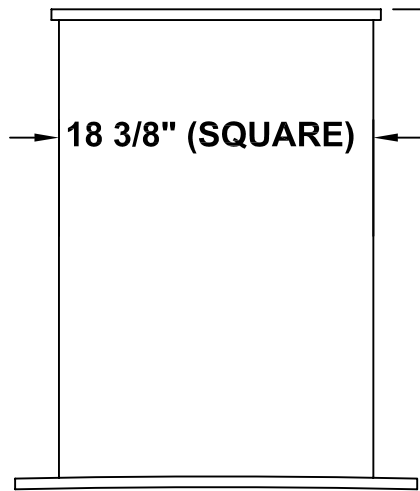
22189

17830-XX PEDESTAL



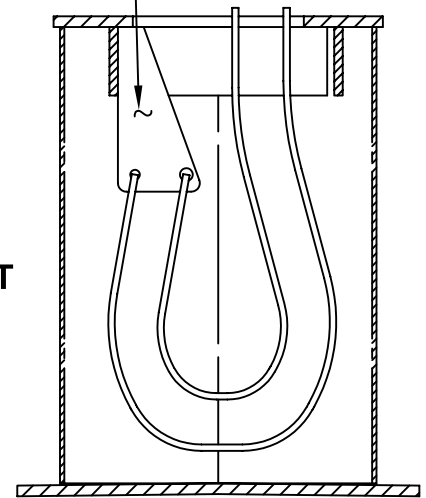
INSERT BULKHEAD
FITTINGS (FURNISHED
WITH HT40/50 CRANE)
INTO THIS BRACKET
AND ATTACH HOSES

19 1/4" (SQUARE)

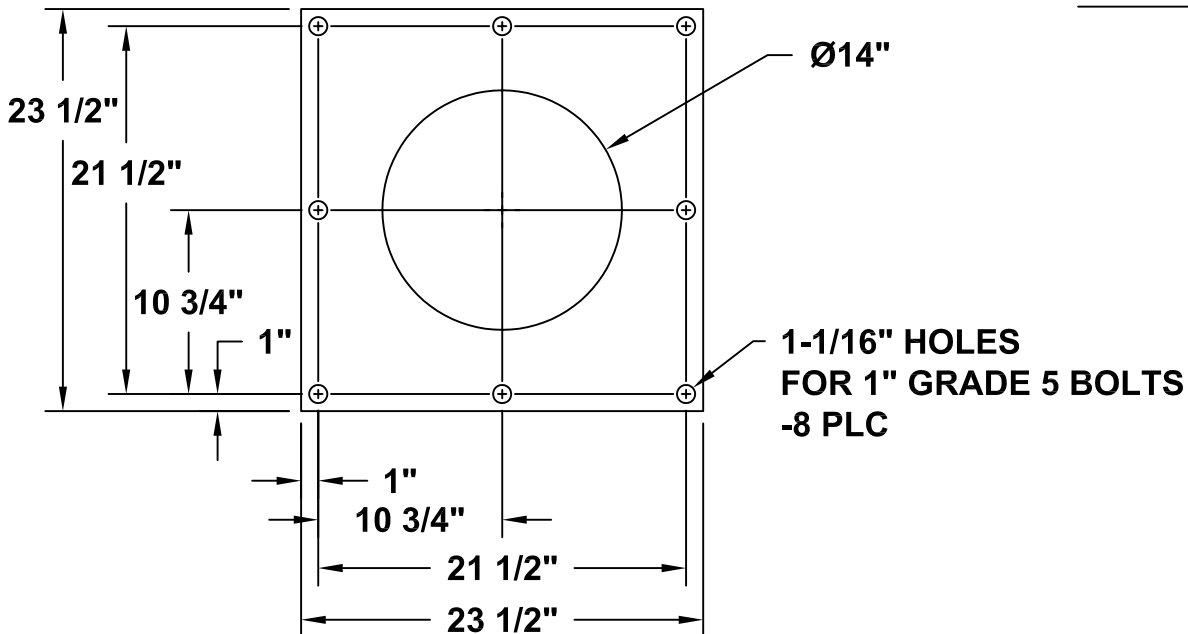


18 3/8" (SQUARE)

DASH NUMBER
SPECIFIES HEIGHT



SECTION A-A



MFG., INC.
CINCINNATI, OHIO

TITLE
MOUNTING DIMENSIONS

HT40/50KX CRANES

DATE
3-3-05C

SUPERSEDES
1-30-98B

SECTION
C200

17831

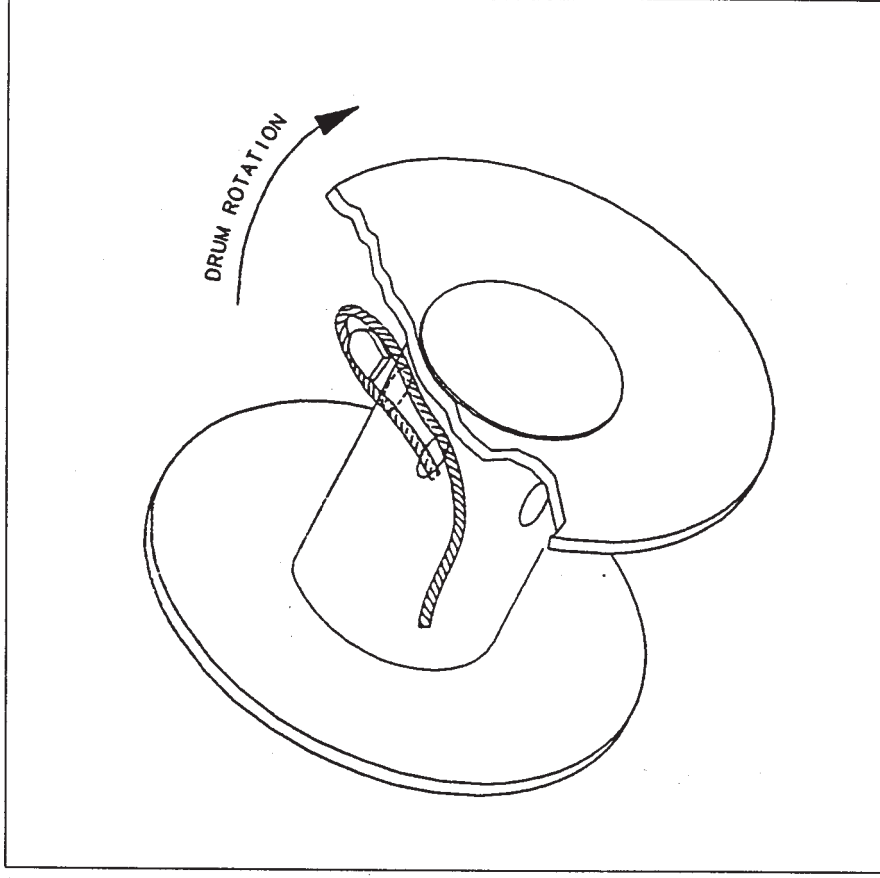
WIRE ROPE INSTALLATION

STEP 1: INSERT WIRE ROPE END THROUGH ANTI-TWO-BLOCK WEIGHT.

STEP 2: INSERT WIRE ROPE END INTO POCKET OPENING AND THROUGH WEDGE POCKET.

CAUTION: IF THE WIRE ROPE IS NOT INSTALLED FOR THE CORRECT DRUM ROTATION, THE WINCH BRAKE VALVE WILL NOT HOLD THE LOAD.

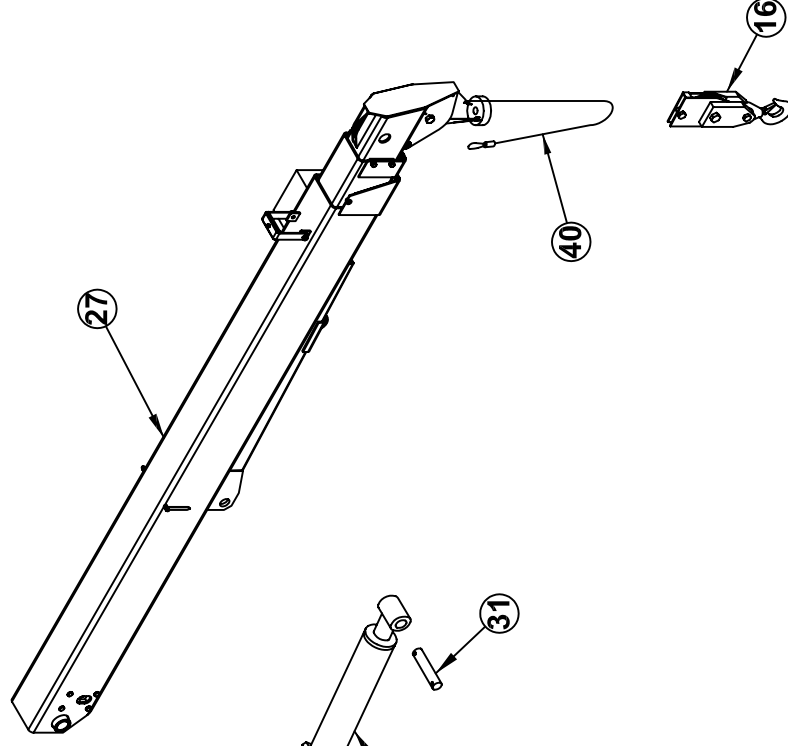
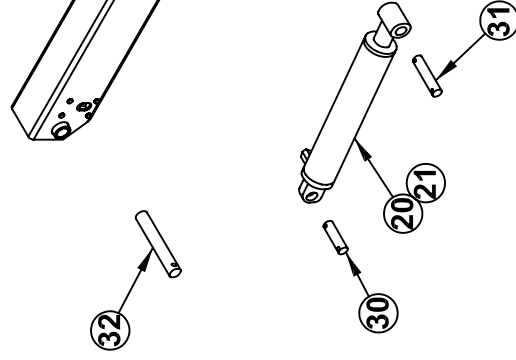
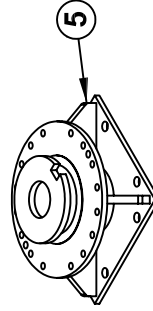
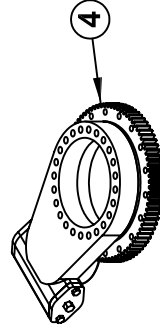
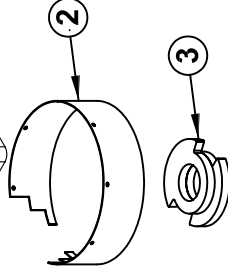
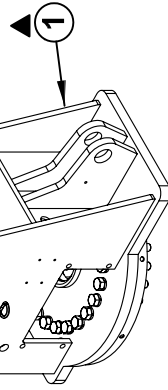
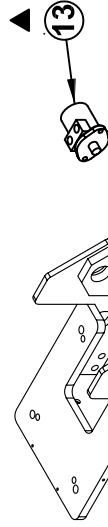
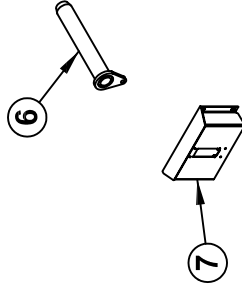
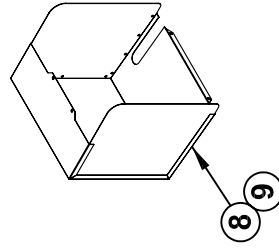
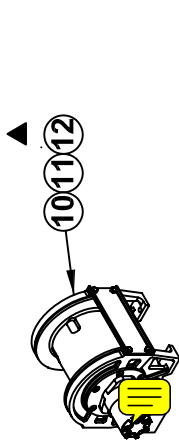
▲ NOTE: ON THE ET25K(X) A 7/16" HEX NUT WILL BE USED IN LIEU OF A WEDGE.



SECTION 400

PARTS





REPLACEMENT PARTS LIST - REF 22176

REPLACEMENT PARTS LIST - FULL POWER BOOM 24572

REPLACEMENT FASTENERS LIST - REF 22177



MANUFACTURING, INC.
CINCINNATI, OHIO

TITLE
REPLACEMENT PARTS

HT40KX, HT50KX

DATE
10-02-06A

SUPERSEDES
5-13-05

SECTION
C400

22175

ITEM #	PART #	DESCRIPTION	ITEM #	PART #	DESCRIPTION
1	22840	HOUSING WELDED ASSEMBLY	41	-	-
2	22726	OUTERRING	42	-	-
3	22702	ROTATION STOPPING WELDED ASSEMBLY	43	-	-
4	22704	SLEWING RING	44	-	-
5	22710	PEDESTAL WELDED ASSEMBLY	45	-	-
6	22721	PIVOT PIN MAIN BOOM PIVOT	46	-	-
7	22715	SIDE COVER	47	-	-
8	22841	REAR HYD. VALVE COVER - STD.	48	-	-
9	22842	REAR HYD. VALVE COVER - PROP.	49	-	-
10	22828	WINCH - 3000 LB (SINGLE LINE) - HT40KX - NON-PROP	50	-	-
11	22829	WINCH - 3000 LB (SINGLE LINE) - HT40KX - PROP	51	22766	FIELD SERVICE LABEL KIT - HT40KX NON-PROP.
12	22830	WINCH - 4000 LB (SINGLE LINE) - HT50KX	52	22766-1	FIELD SERVICE LABEL KIT - HT40KX PROPORTIONAL
13	19177	HYDRAULIC ROTATION MOTOR	53	22767	FIELD SERVICE LABEL KIT - HT50KX NON-PROP.
14	-	-	54	22767-1	FIELD SERVICE LABEL KIT - HT50KX PROPORTIONAL
15	-	-	55	-	-
16	17770	HEADACHE BALL ASSEMBLY	56	-	-
17	-	-	57	-	-
18	-	-	58	-	-
19	-	-	59	-	-
20	22021-1	ELEV. CYL. 4.5" BORE x 2" ROD x 19.63" STROKE	60	-	-
21	22022-1	ELEV. CYL. 5" BORE x 2" ROD x 19.63" STROKE	61	-	-
22	-	-	62	-	-
23	-	-	63	-	-
24	-	-	64	-	-
25	-	-	65	-	-
26	-	-	66	-	-
27	24550	BOOM ASSEMBLY - HT40/50KXX	67	-	-
28	-	-	68	-	-
29	-	-	69	-	-
30	22256	ELEVATION CYLINDER PIN - INBOARD	70	-	-
31	22257	ELEVATION CYLINDER PIN - OUTBOARD	71	-	-
32	22290	PIVOT PIN, BOOM - 1-3/4" OD x 12-1/2" LONG	72	-	-
33	-	-	73	-	-
34	-	-	74	-	-
35	-	-	75	-	-
36	-	-	76	-	-
37	-	-	77	-	-
38	-	-	78	-	-
39	-	-	79	-	-
40	17094-3/8-100	WIRE ROPE ASSEMBLY - 3/8" x 100 FT	80	-	-
		ITEM NOT SHOWN ON REPLACEMENT PARTS DRAWING			
		REPLACEMENT PARTS DWG REF 22175			

 VENTURO MANUFACTURING, INC. CINCINNATI, OHIO	TITLE	REPLACEMENT PARTS	DATE	12-4-06B	SECTION	C400
		HT40KX, HT50KX	SUPERCEDES	10-2-06A		22176

FASTENER LIST FOR HT40/50KX

Part Number	Description	Qty	Location/Function
!HHCS06311200	HEX HEAD CAP SCREW - 5/8-11 X 2	16	LOWER BASE TO SLEWING RING
!HHCS06311450	HEX HEAD CAP SCREW - 5/8-11 X 4-1/2	24	SLEWING RING TO UPPER HOUSING
!LWSH-063	LOCK WASHER - 5/8	40	LOWER BASE / UPPER HOUSING TO SLEWING RING
!SHCS05013200	SOCKET HEAD CAP SCREW - 1/2-13 X 2	2	ROTATION MOTOR
!LWSH-050-HC	LOCK WASHER - 1/2 HI COLLAR	2	ROTATION MOTOR
!SHCS03816350	SOCKET HEAD CAP SCREW - 3/8-16 X 3-1/2	2	VALVE BLOCK (NON-PROPORTIONAL ONLY)
!FWSH-038	FLAT WASHER - 3/8	2	VALVE BLOCK (NON-PROPORTIONAL ONLY)
!LWSH-038-HC	LOCK WASHER - 3/8 HI COLLAR	2	VALVE BLOCK (NON-PROPORTIONAL ONLY)
!HNUT-03816	HEX NUT - 3/8-16	2	VALVE BLOCK (NON-PROPORTIONAL ONLY)
!HHCS03816100	HEX HEAD CAP SCREW - 3/8-16 X 1	2	VALVE BLOCK (PROPORTIONAL ONLY)
!FWSH-038	FLAT WASHER - 3/8	2	VALVE BLOCK (PROPORTIONAL ONLY)
!LWSH-038	LOCK WASHER - 3/8	2	VALVE BLOCK (PROPORTIONAL ONLY)
!HHCS05013225	HEX HEAD CAP SCREW - 1/2-13 X 2-1/4	4	WINCH
!FWSH-050	FLAT WASHER - 1/2	4	WINCH
!LWSH-050	LOCK WASHER - 1/2	4	WINCH
!HNUT-05013	HEX NUT - 1/2-13	4	WINCH
!HHCS03816100	HEX HEAD CAP SCREW - 3/8-16 X 1	4	WINCH (BACK SIDE)
!FWSH-038	FLAT WASHER - 3/8	4	WINCH (BACK SIDE)
!LWSH-038	LOCK WASHER - 3/8	4	WINCH (BACK SIDE)
!HHCS03816100	HEX HEAD CAP SCREW - 3/8-16 X 1	1	BOOM PIVOT PIN
!FWSH-038	FLAT WASHER - 3/8	1	BOOM PIVOT PIN
!LWSH-038	LOCK WASHER - 3/8	1	BOOM PIVOT PIN
!PHCS#0632100	PAN HEAD CAP SCREW #6-32 X 1	2	TERMINAL BLOCK
!PHCS#1024050	PAN HEAD CAP SCREW #10-24 X 1/2	2	CIRCUIT BREAKER
!LWSH-#10	LOCK WASHER - #10	2	CIRCUIT BREAKER
!HHCS02520050	HEX HEAD CAP SCREW - 1/4-20 X 1/2	1	TOP POSITION SWITCH
!FWSH-025	FLAT WASHER - 1/4	1	TOP POSITION SWITCH
!LWSH-025	LOCK WASHER - 1/4	1	TOP POSITION SWITCH
19269	CABLE CLAMP - 1/4	1	PRESSURE SWITCH HARNESS
!HHCS02520063-5	HEX HEAD CAP SCREW - 1/4-20 X 5/8	1	PRESSURE SWITCH HARNESS
!LWSH-025	LOCK WASHER - 1/4	1	PRESSURE SWITCH HARNESS
!HHCS03118125	HEX HEAD CAP SCREW - 5/16-18 X 1-1/4	1	GROUND SCREW
!FWSH-031	FLAT WASHER - 5/16	1	GROUND SCREW
!LWSH-031-STAR	STAR LOCK WASHER - 5/16 - EXTERNAL	2	GROUND SCREW
!HHCS02520063-5	HEX HEAD CAP SCREW - 1/4-20 X 5/8	4	REAR COVER
!LWSH-025	LOCK WASHER - 1/4	4	REAR COVER
!UNUT-02520-LKG	U-NUT - 1/4-20 - LOCKING TYPE	7	LOWER COVER
!HHCS02520063-5	HEX HEAD CAP SCREW - 1/4-20 X 5/8	7	LOWER COVER
!FWSH-025	FLAT WASHER - 1/4	7	LOWER COVER
!SRNG-150	SNAP RING - 1-1/2 SHAFT DIAMETER	4	ELEVATION CYLINDER PINS - ROD AND BASE ENDS
!PHMS03816050	PAN HEAD MACHINE SCREW - 3/8-16 X 1/2	1	COUPLING FOR MASTER BYPASS VALVE
19122	HOLE PLUG	5	WINCH ACCESS HOLES
19271-1	2-1/8 DIAMETER HOLE PLUG	2	WINCH ACCESS HOLES

REPLACEMENT PARTS DWG REF 22177



MFG., INC.
CINCINNATI, OHIO

TITLE
REPL. FASTENERS LIST

HT40KX, HT50KX

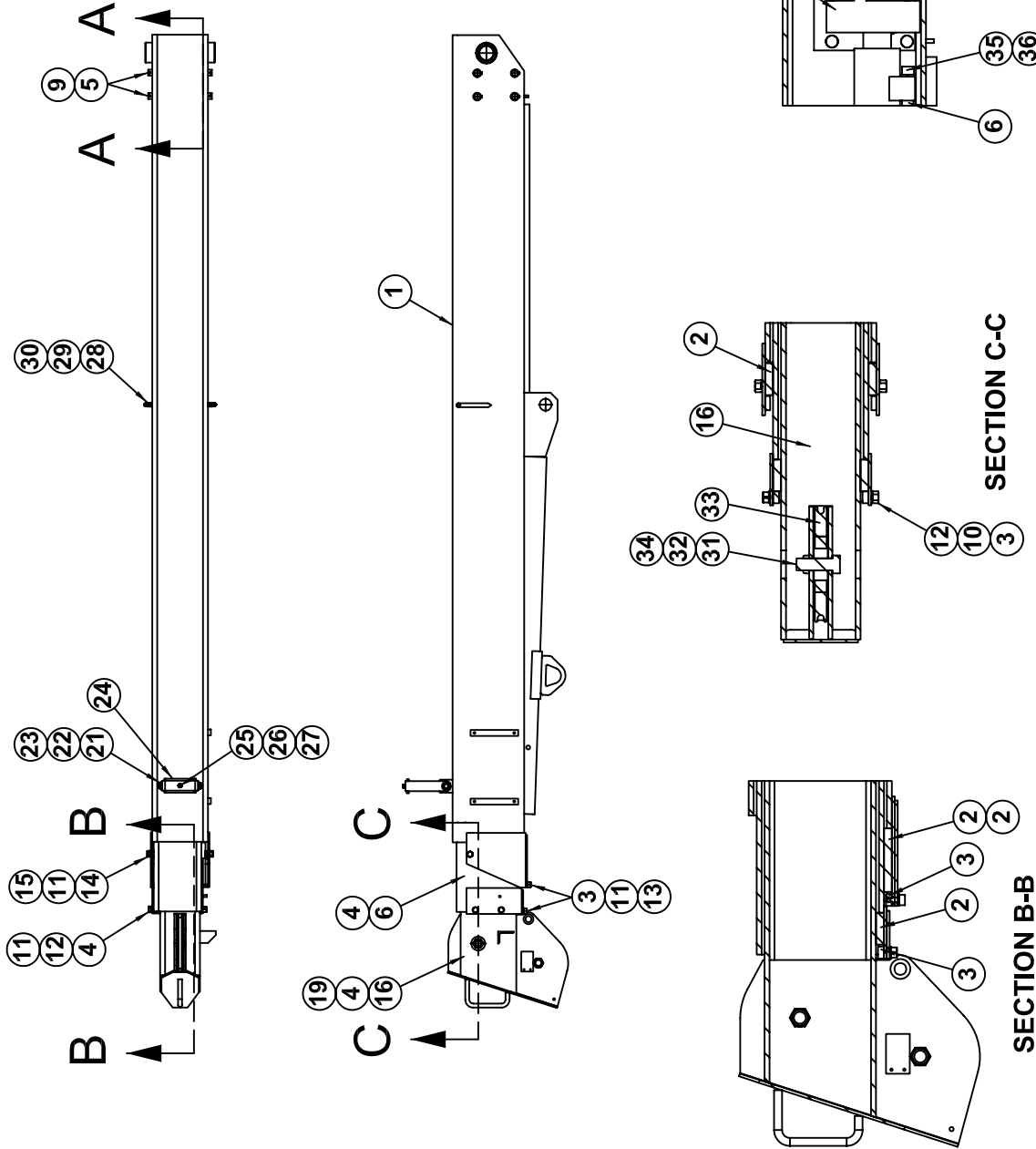
DATE
5-16-05

SUPERCEDES
-


SECTION
C400

22177

24550 BOOM PARTS DRAWING



REF. REPLACEMENT PARTS LIST 24572 SECTION A-A

 VENTURO MANUFACTURING, INC. CINCINNATI, OHIO	TITLE		DATE	SECTION
	24550 BOOM PARTS DRAWING		8-5-05A	C400
	HT40/50KXX		SUPERSEDES 3-4-03	24571

MANUAL EXTENSION (-1)
FULL POWER EXTENSION (-2)

MANUAL EXTENSION (-1)
FULL POWER EXTENSION (-2)

19	2	+	18957	BEARING PAD - SIDE FRONT	-	-						
18	1	+	24568	PIN - CYLINDER	38	1	+	24566			* EXTENSION CYLINDER - TWO STAGE ▲	
17	2	+	24558	PIN BLOCK	38	1	+	22032-2			* EXTENSION CYLINDER - SINGLE STAGE ▲	
16	1	+	24556-2	TERTIARY BOOM TUBE ASSEMBLY	37	8	+	24569			COUNTERSUNK ALLEN HEAD CAP SCREW MODIFIED 5/8-18 X 1" LONG	
16	1	+	24556-1	TERTIARY BOOM TUBE ASSEMBLY	36	2	+	ILWSH-050			LOCK WASHER - 1/2	
15	2	+	!HNUT-03816	HEX NUT - 3/8-16	35	2	+	!SHCS05013250			SOCKET HEAD CAP SCREW - 1/2-13 X 2-1/2" LONG	
14	2	+	!HHCS03816038	NEX HEAD CAP SCREW - 3/8-16 X 3/8" LONG	34	2	+	!JNUT-07510N			NYLON LOCK - JAMNUT - 3/4-10	
13	4	+	!HHCS03816075	HEX HEAD CAP SCREW - 3/8-16 X 3/4" LONG	33	2	+	23928			BOOM SHEAVE WITH BUSHING	
12	4	+	!HHCS03816063	HEX HEAD CAP SCREW - 3/8-16 X 5/8" LONG	32	2	+	17059-1			SHEAVE AXLE	
11	10	+	!LWSH-038	LOCK WASHER - 3/8"	31	1	+	23929			SPACER - 23927 & 23928 POLY SHEAVES	
10	-	-	-	-	30	2	+	!ANUT-02520S			ACORN NUT - 1/4-20 STAINLESS	
9	8	+	!SRNG-75 ▲	SNAP RING - 3/4" - PLATED	29	2	+	13459-2			BOOM ARROW 4-7/16" LONG	
8	4	+	24519	SIDE, REAR BEARING	28	2	+	22490			SPACER, BOOM ARROW 1/2" O.D.	
7	1	+	24559	NUT BAR	27	1	+	!HNUT-02520			HEX NUT 1/4-20	
6	1	+	24554-2	SECONDARY BOOM TUBE ASSEMBLY	26	1	+	!LWSH-025			LOCK WASHER - 1/4"	
6	1	+	24554-1	SECONDARY BOOM TUBE ASSEMBLY	25	1	+	!HHCS02520075			HEX HEAD CAP SCREW - 1/4-20 X 3/4" LONG	
5	4	+	22255 ▲	THRUST PIN - EXTENSION CYLINDER	24	1	+	19881			CABLE GUIDE WEAR STRIP	
4	-	-	-	-	23	2	+	!JNUT-05013N			1/2-13 NYLON INSERT JAM NUT	
3	4	+	24522	LOWER FRONT NUTBAR	22	1	+	!FWSH-050			FLAT WASHER - 1/2"	
2	9	+	24562	BEARING	21	2	+	!HHCS05013100			HEX HEAD CAP SCREW - 1/2-13NC X 1" LONG	
1	1	+	24552	PRIMARY BOOM FINAL ASSEMBLY	20	1	+	19880			CABLE GUIDE STRUCTURE	
ITEM QTY			PART NO.	DESCRIPTION	ITEM QTY			PART NO.			DESCRIPTION	

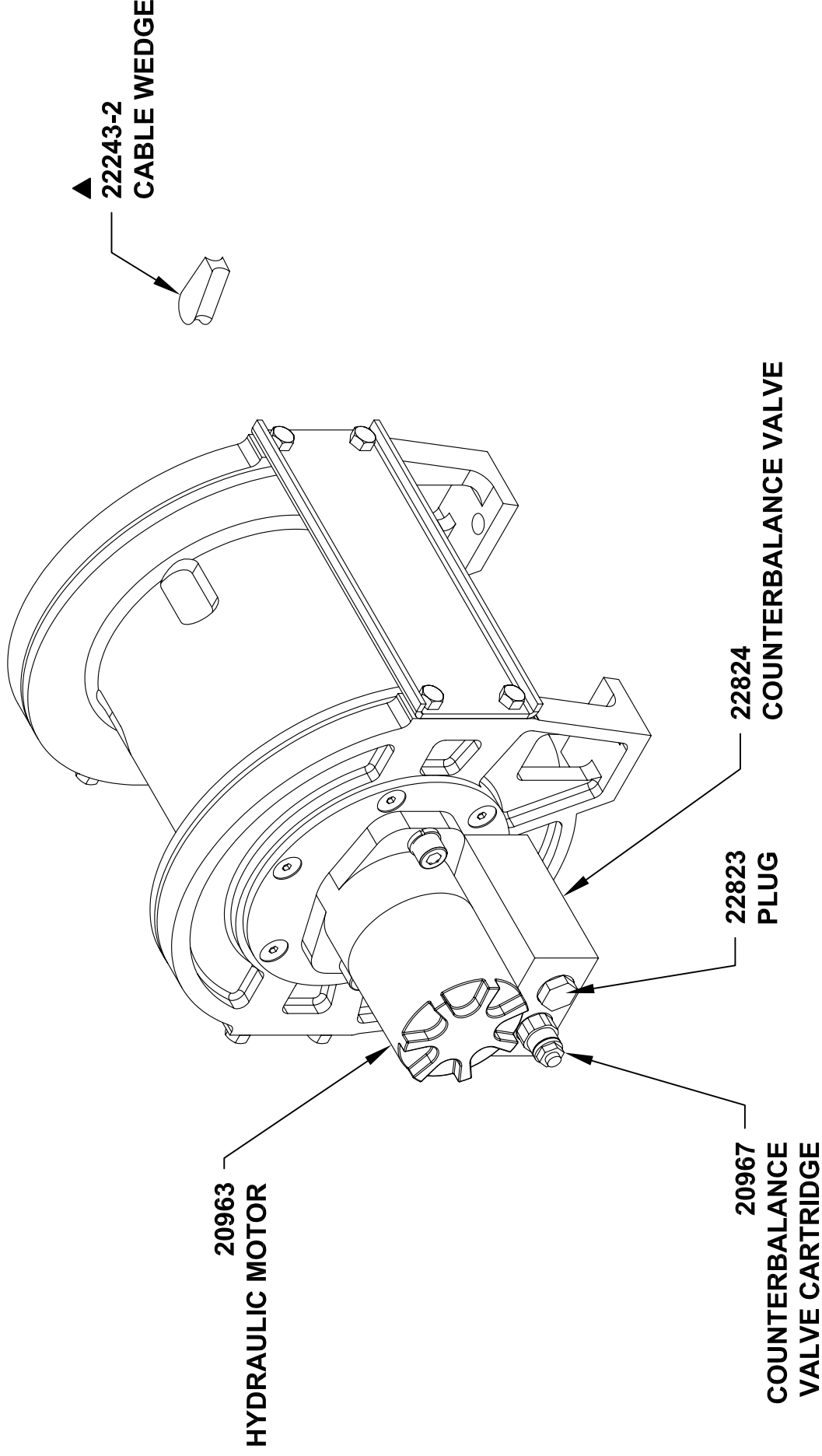
* ITEMS NOT SHOWN ON DWG. 24571
REF. REPLACEMENT DRAWING NO. 24571



MANUFACTURING, INC.
CINCINNATI, OHIO

TITLE	DATE	SECTION
24550 BOOM REPLACEMENT PARTS LIST	8-5-05D	C400
HT40/50KXX	SUPERSEDES 12-7-04C	24572

REPLACEMENT PARTS 22266 & 22268 WINCH



MANUFACTURING, INC.
CINCINNATI, OHIO

TITLE

REPLACEMENT PARTS DRAWING

DATE

4-17-06A

SECTION

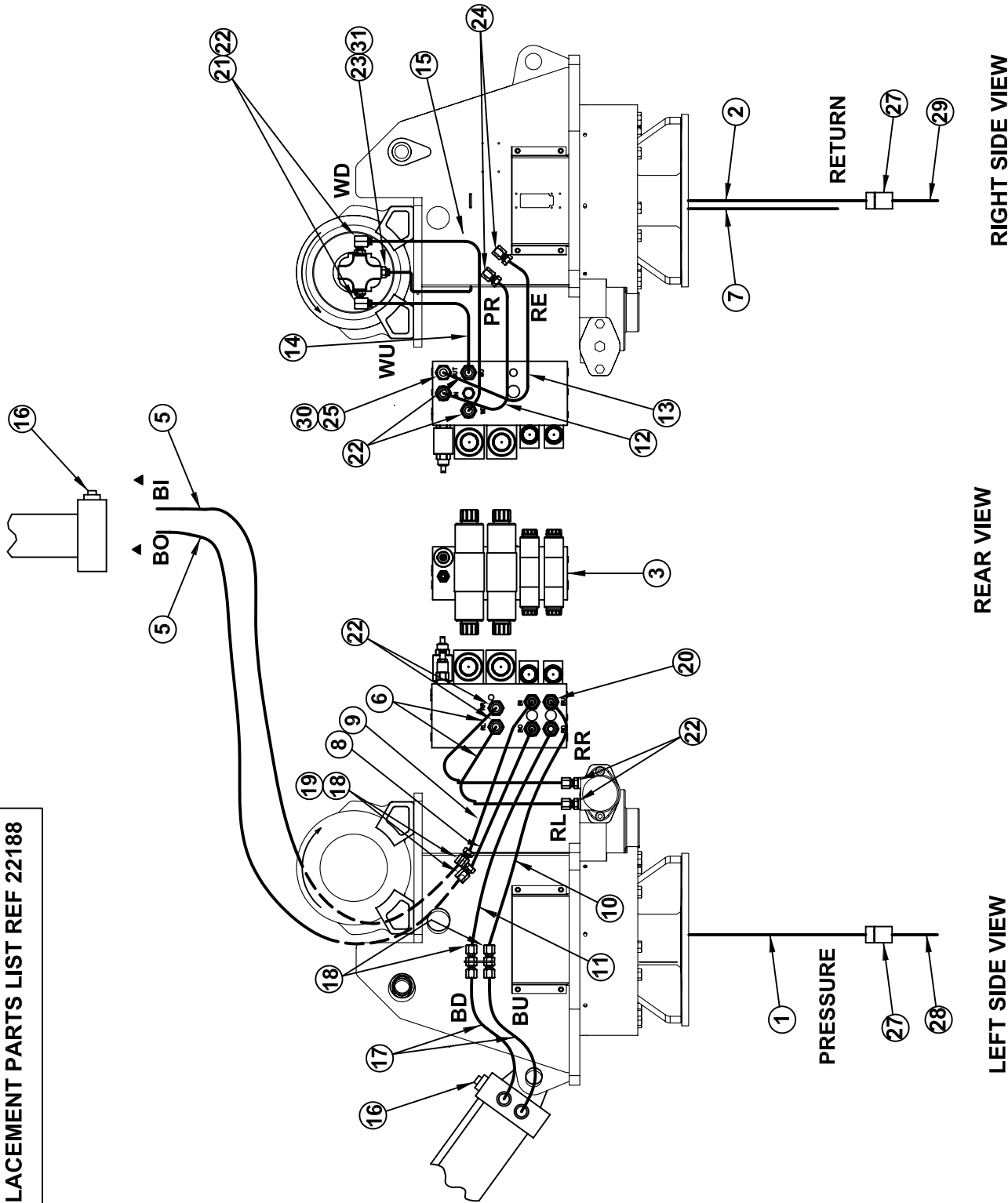
-

SUPSEDES

10-21-05

22266 & 22268 WINCHES

22822



RR	ROTATION RIGHT
RL	ROTATION LEFT
BO	BOOM OUT
BI	BOOM IN
BU	BOOM UP
BD	BOOM DOWN
PR	PRESSURE
RE	RETURN
WU	WINCH UP
WD	WINCH DOWN



MANUFACTURING, INC.
CINCINNATI, OHIO

TITLE

REPLACEMENT PARTS DRAWING

HT40/50KX PROP HYD. COMPONENTS

DATE

10-5-06C

10-5-06C

SECTION

C400

C400

SUPERSEDES

4-12-06B

22183

HYDRAULIC SYSTEM COMPONENTS - HT40/50KX CRANES REPLACEMENT PARTS LIST

ITEM	PART NUMBER	DESCRIPTION
1	22760	PRESSURE HOSE
2	22761	RETURN HOSE
3	22736	VALVE BANK - HT40KX, HT50KX
4	-	-
5	22363	EXTENSION CYLINDER HOSE
6	22751	HYD TUBING - ROTATION
7	▲ 20981	▲ HOSE - CASE DRAIN
8	22757	HYD TUBING - BOOM OUT
9	22756	HYD TUBING - BOOM IN
10	22755	HYD TUBING - BOOM UP
11	22754	HYD TUBING - BOOM DOWN
12	22758	HOUSING PRESSURE HOSE
13	22759	HOUSING RETURN HOSE
14	▲ 22831	▲ HOSE - WINCH UP
15	▲ 22832	▲ HOSE - WINCH DOWN
16	19247	COUNTERBALANCE VALVE (ELEVATION & EXTENSION CYLINDERS)
17	22382	ELEV CYLINDER HOSE - 22" x 6MBX x 6FJX
18	H2700-0606	HYD BULKHEAD
19	H6502-0606	HYD ELBOW FITTING - 6MJ-6FJX - 90°
20	H6400-0606	HYD NIPPLE
21	H6801-0808	HYD ELBOW
22	▲ H6410-1608	▲ REDUCER - EXPANDER - 16MO-8FO
23	▲ H6805-0402	▲ HYD ELBOW - 4MO-2FP - 90° ▲
24	H2701LN-0808	HYD BULKHEAD UNION ELBOW W/ LOCK NUT 8MJ - 90°
25	H6801-1212	HYD ELBOW FITTING 12MO - 12MJ - 90° - EXTRA LONG DROP
26	22312-X.XX	PRIORITY FLOW CART (X.XX REFER TO CHART BELOW)
27	22764	LIVE CONTINUOUS HYDRAULIC SWIVEL
28	22762	PRESSURE HOSE - COMPARTMENT SIDE
29	22763	RETURN HOSE - COMPARTMENT SIDE
30	H2406-1210	HYD TUBE ADAPTER 12FJ - 10MJ
31	▲ 20983	▲ AIR FITTING

REPLACEMENT PARTS DWG REF 22183

HT40	EXTENSION	2.25
	ELEVATION	4.00
HT50	EXTENSION	2.25
	ELEVATION	4.00



MFG., INC.
CINCINNATI, OHIO

TITLE
REPL. PARTS LIST

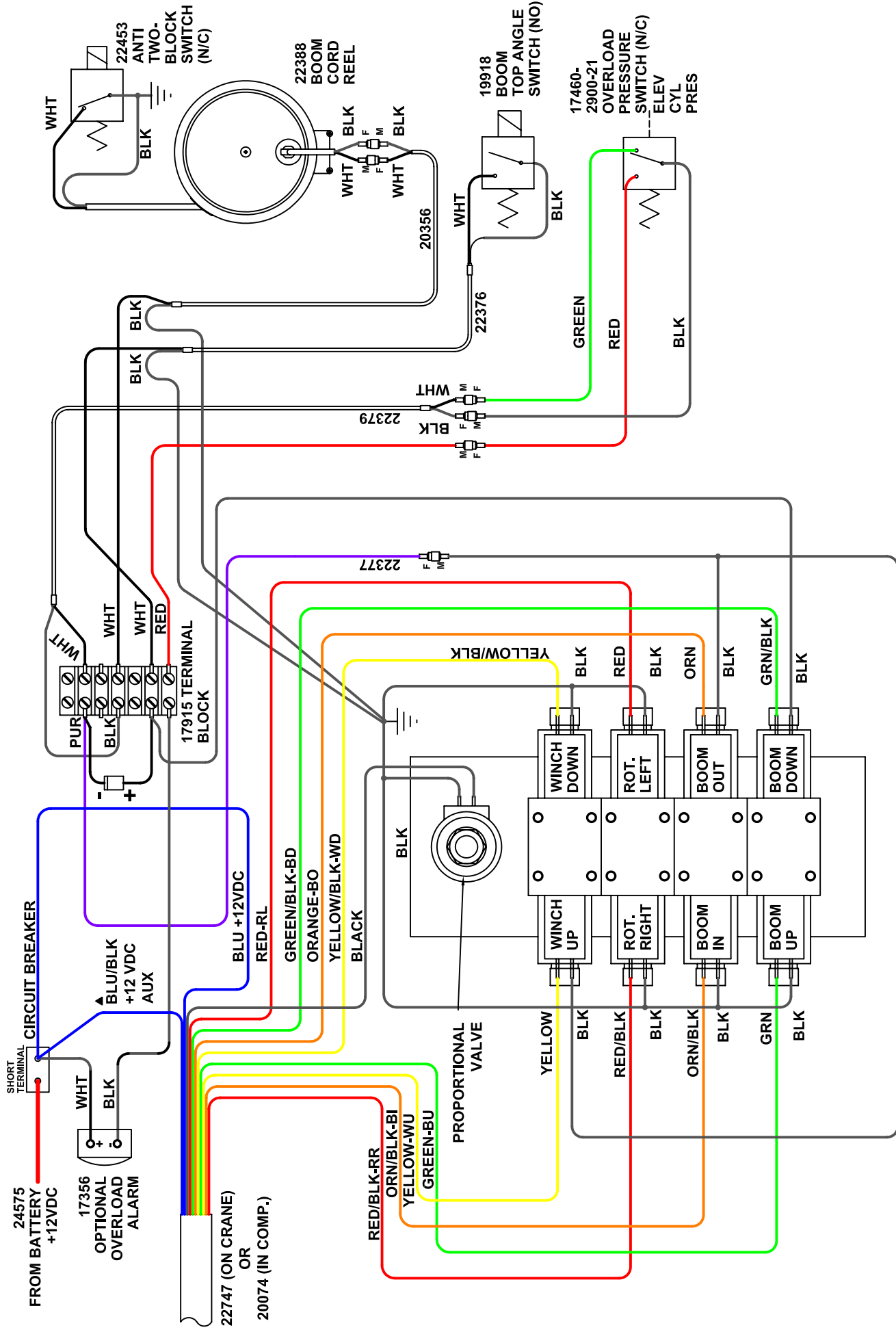
HT40/50KX - PROP

DATE
10-5-06B

SUPERCEDES
4-12-06A

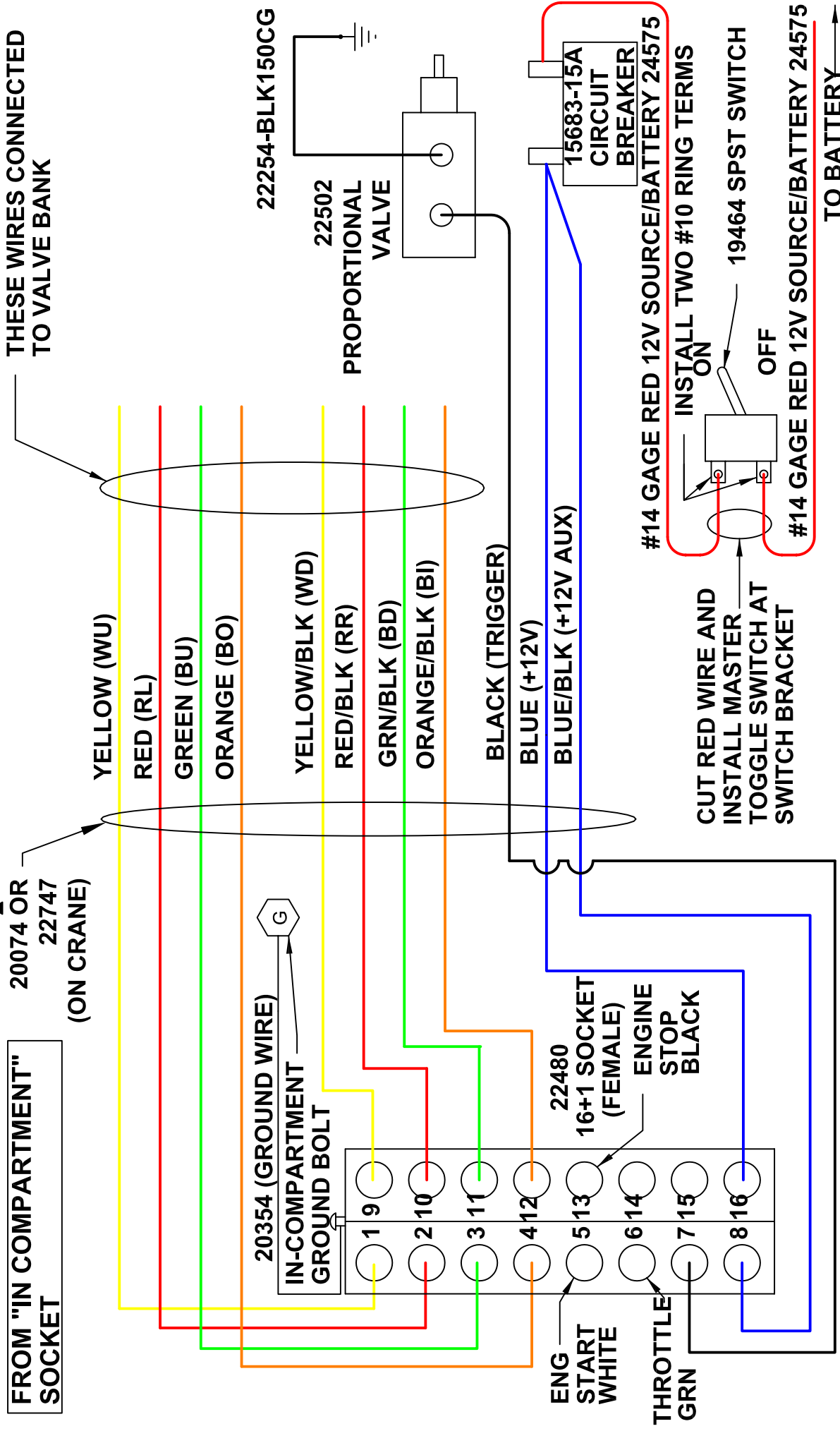
SECTION
C400

22188

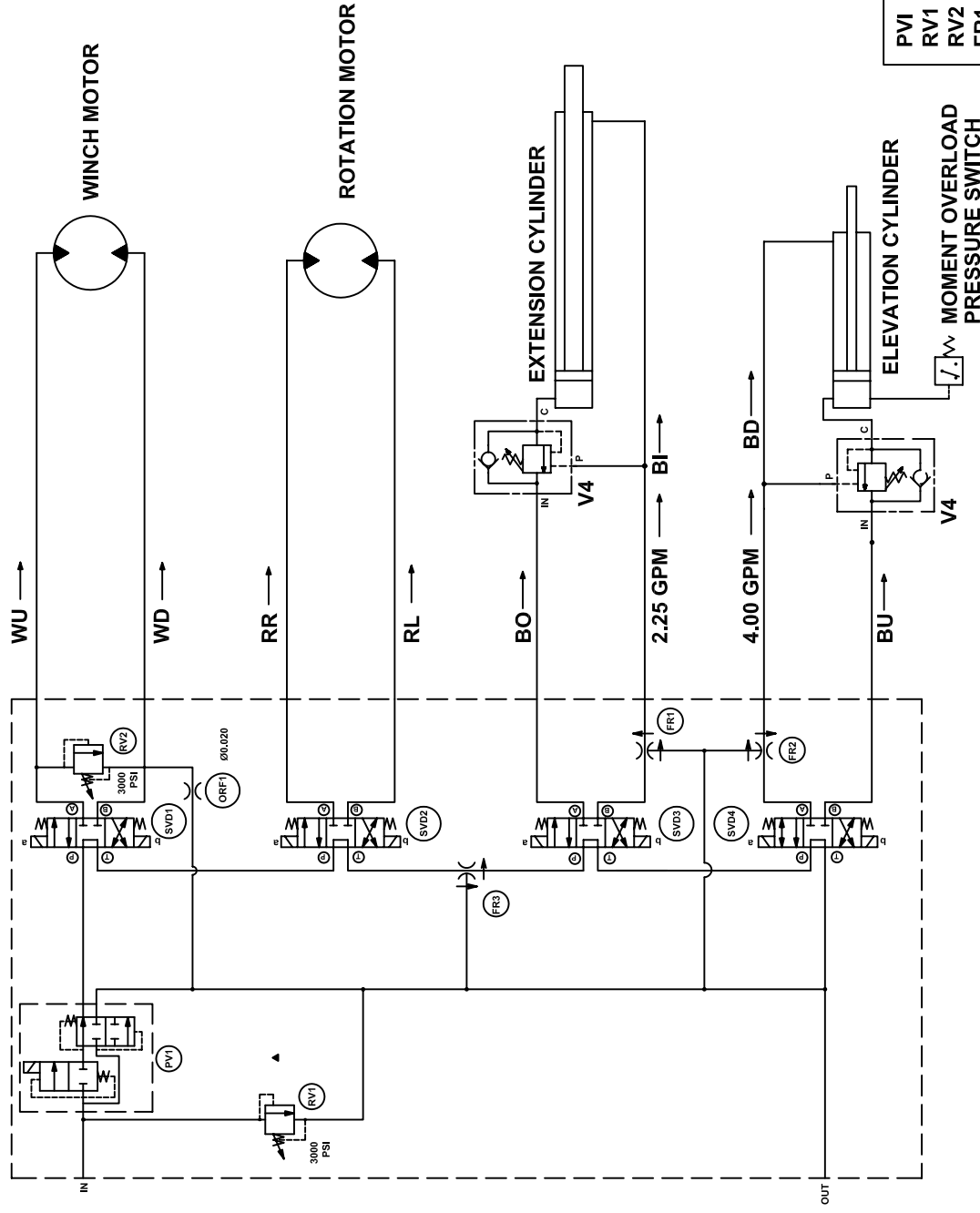


VENTURO MANUFACTURING, INC. CINCINNATI, OHIO	TITLE WIRING DIAGRAM	DATE 5-11-06A SUPERSEDES 5-24-05	SECTION C400	22185
---	--------------------------------	---	------------------------	--------------

PROPORTIONAL IN-COMPARTMENT CONTROLS W/ ENG START/STOP AND/OR THROTTLE CONTROL

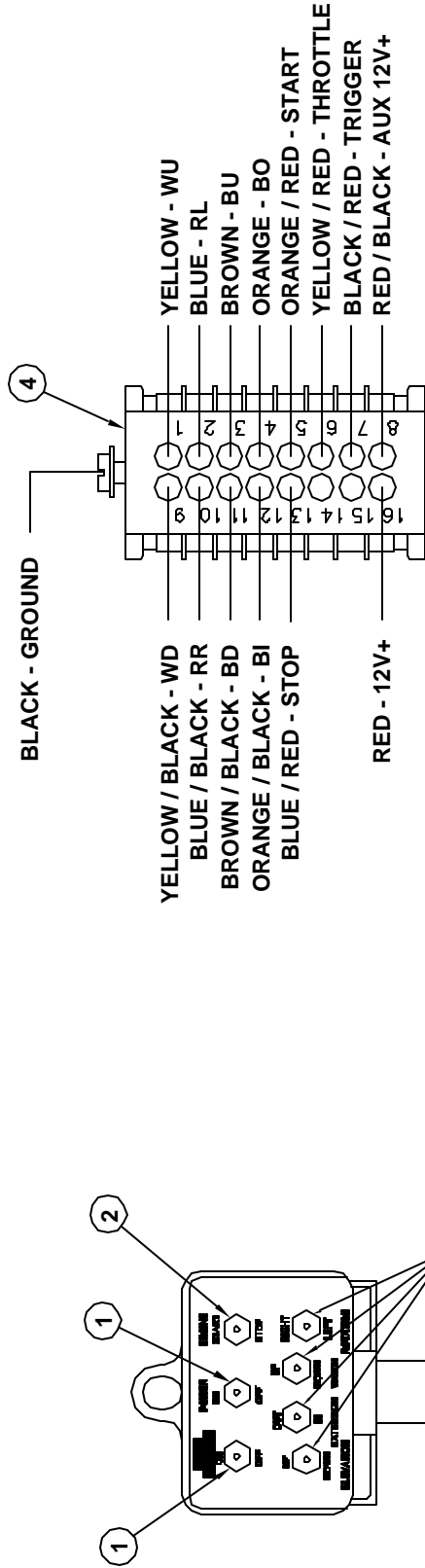


VENTURO MANUFACTURING, INC. CINCINNATI, OHIO	TITLE	DATE	SECTION
	PROP W/ IN-COMP CTRLS & ENG CTRL	5-11-06B	-
	HT18/25/40/50 CRANES	SUPERSEDES 4-12-05A	22125

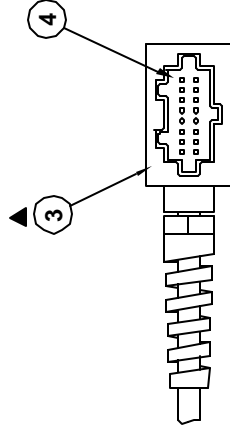


- PVI PROPORTIONAL CONTROL VALVE (SIMPLIFIED REP)
RV1 INLET RELIEF VALVE (3000 PSI)
RV2 WINCH RELIEF VALVE
FR1 PRIORITY FLOW REGULATOR - 2.25 GPM
FR2 PRIORITY FLOW REGULATOR - 4.00 GPM
FR3 PRIORITY FLOW REGULATOR - 6.00 GPM
SVD1 3 POSITION - 4 WAY VALVE
SVD2 3 POSITION - 4 WAY VALVE
SVD3 3 POSITION - 4 WAY VALVE
SVD4 3 POSITION - 4 WAY VALVE

22065 PENDANT (PROP W/ ENG CTRLS)



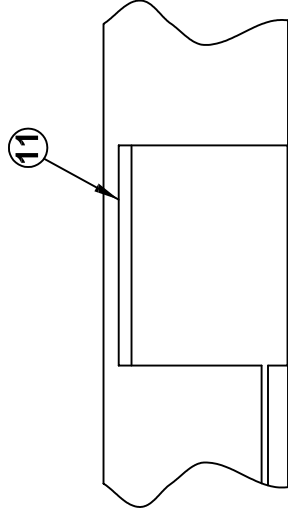
PLUG - BACKSIDE VIEW



ITEM NOT SHOWN ON PRINT

ITEM	QTY	PART NO.	DESCRIPTION
5	1	22082	PROP. VALVE DRIVER CONT. BOARD
4	1	22472	MALE INSERT - 16 + 1 POLE
3	1	22471	PLUG CASE - 16 + 1 POLE
2	4	22081	SPDT MOMENTARY SWITCH
1	1	22080	SPST SWITCH

 MANUFACTURING, INC. CINCINNATI, OHIO	TITLE		REPLACEMENT PARTS DRAWING	
	DATE		7-30-04A	SECTION
	SUPERSEDES		7-1-04	C400
	22065 PENDANT (PROP W/ ENG CTRLS)		22073	



SWITCH ARM

SWITCH ARM HUB

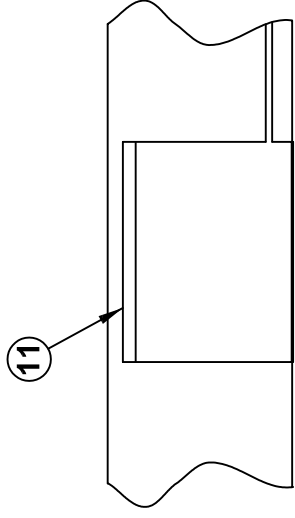
CLEVIS PIN

THREAD WIRE ROPE & THROUGH CLEVIS PIN & SECURED BETWEEN SWITCH ARM AND HUB

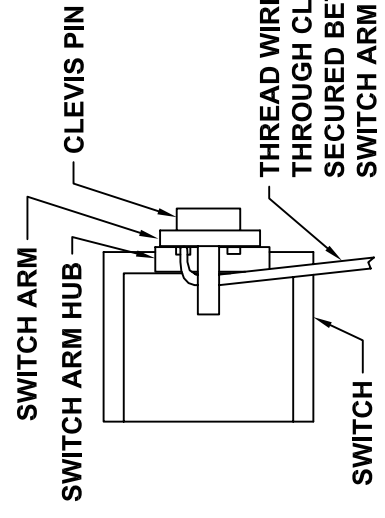
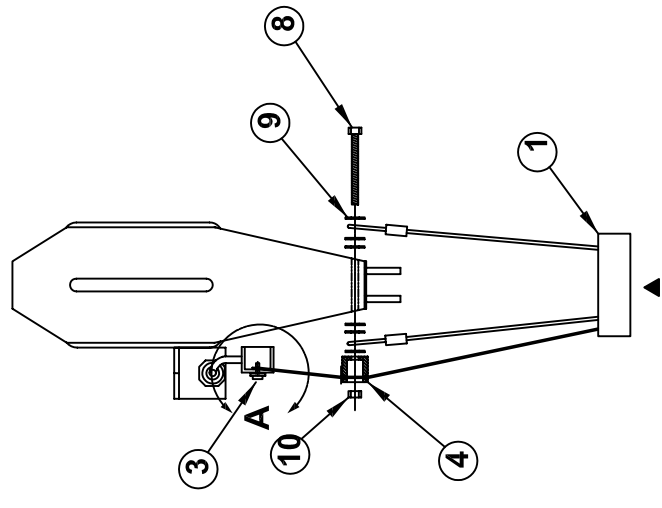
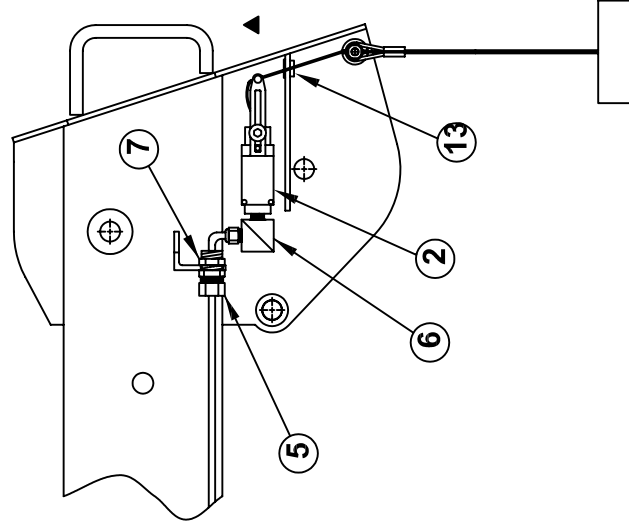
SWITCH

DETAIL VIEW - A

TITLE	DATE	SECTION
REPLACEMENT PARTS DWG - LH CORD REEL	6-19-06D	C400
22685 ANTI-TWO BLOCK SYSTEM	SUPERSEDES 5-21-04C	22684



11




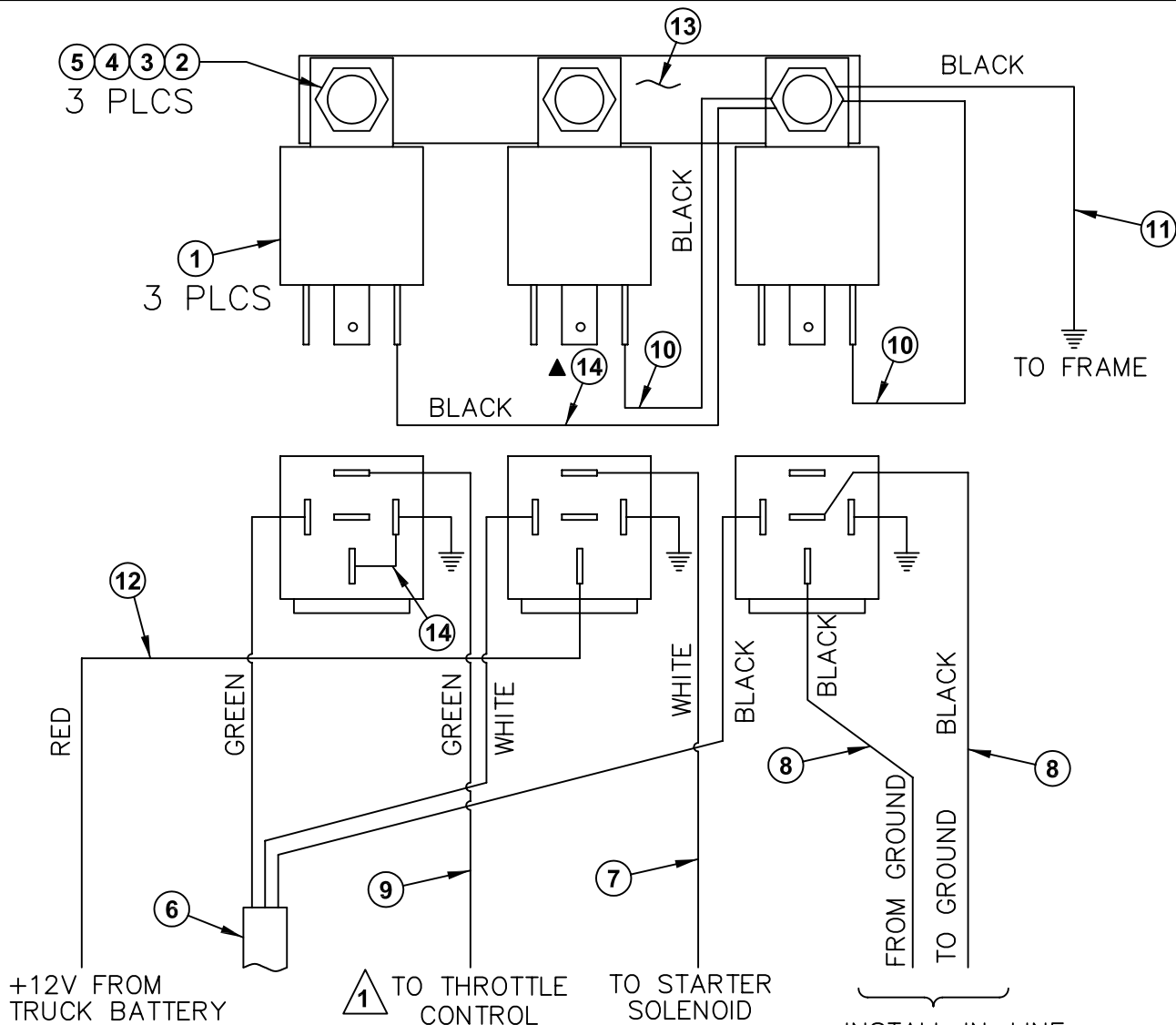
▲ DETAIL VIEW - A

NOTE: FOR OPTIONAL RIGHT HAND CORD REEL.

13	2	19063	SNAP BUSHING 1/2 I.D.
12	1	20951-3	HANGER CABLE
11	1	22388	CORD REEL ASSEMBLY - RH
10	1	!LNUT-02520	LOCK NUT, NYLON 1/4-20
9	6	!FWSH-025	FLAT WASHER 1/4
8	1	!HCS02520275	HHCS 1/4-20 x 2-3/4" GR. 5
7	1	PL-20-469	LOCKNUT (1/2" PIPE)
6	1	19060	STRAIN RELIEF - 90DEG
5	1	22455	STRAIN RELIEF - STRAIGHT (1/2" PIPE)
4	1	22454	CABLE GUIDE - BLACK DELRIN
3	1	21269	CLEVIS PIN - 3/16 X 1/2
2	1	22453	MICROSWITCH
1	1	19377-3	WEIGHT ASSY.

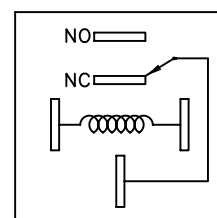
ITEM	QTY	PART NO.	DESCRIPTION
------	-----	----------	-------------

 VENTURO MANUFACTURING, INC. CINCINNATI, OHIO	TITLE		REPLACEMENT PARTS DWG - RH CORD REEL ▲	DATE	SECTION
			HT40KX, HT50KX	6-19-06E	C400
				SUPERSEDES	
				5-21-04D	22449



1
NOTE:
THROTTLE CONTROL IS DESIGNED
TO PROVIDE A GROUND SIGNAL
WHEN SWITCH IS ACTIVATED

INSTALL IN-LINE
WITH IGNITION COIL
(GAS) OR
FUEL SOLENOID
(DIESEL).



RELAY
SCHEMATIC

ITEM	QTY	PART#	DESCRIPTION
1	3	22739 ▲	RELAY
2	3	!PHCS#1024075	#10-24 X 3/4 PHIL PAN HD BOLT
3	3	!LWSH-#10	#10 LOCKWASHER
4	3	!FWSH-025	#10 WASHER
5	3	!HNUT-#1024	#10 NUT
6	1	22607	WIRE HARNESS - 12/3 SJO
7	1	22609	WHITE - 16 GAGE ELECTRICAL WIRE - 15 FEET LONG
8	2	22610	BLACK - 16 GAGE ELECTRICAL WIRE - 15 FEET LONG
9	1	22611	GREEN - 16 GAGE ELECTRICAL WIRE - 15 FEET LONG
10	2	22612	BLACK - 16 GAGE ELECTRICAL WIRE - 6 INCHES LONG
11	1	22613	BLACK - 16 GAGE ELECTRICAL WIRE - 8 FEET LONG
12	1	22614	RED - 14 GAGE ELECTRICAL WIRE - 15 FEET LONG
13	1	01181	BUSS BAR
14	1	22619	BLACK - 16GA WIRE ASSY - 6" LONG W/ 3 INCH PIGTAIL



MFG., INC.
CINCINNATI, OHIO

TITLE **ENGINE START/STOP
THROTTLE CONTROL**

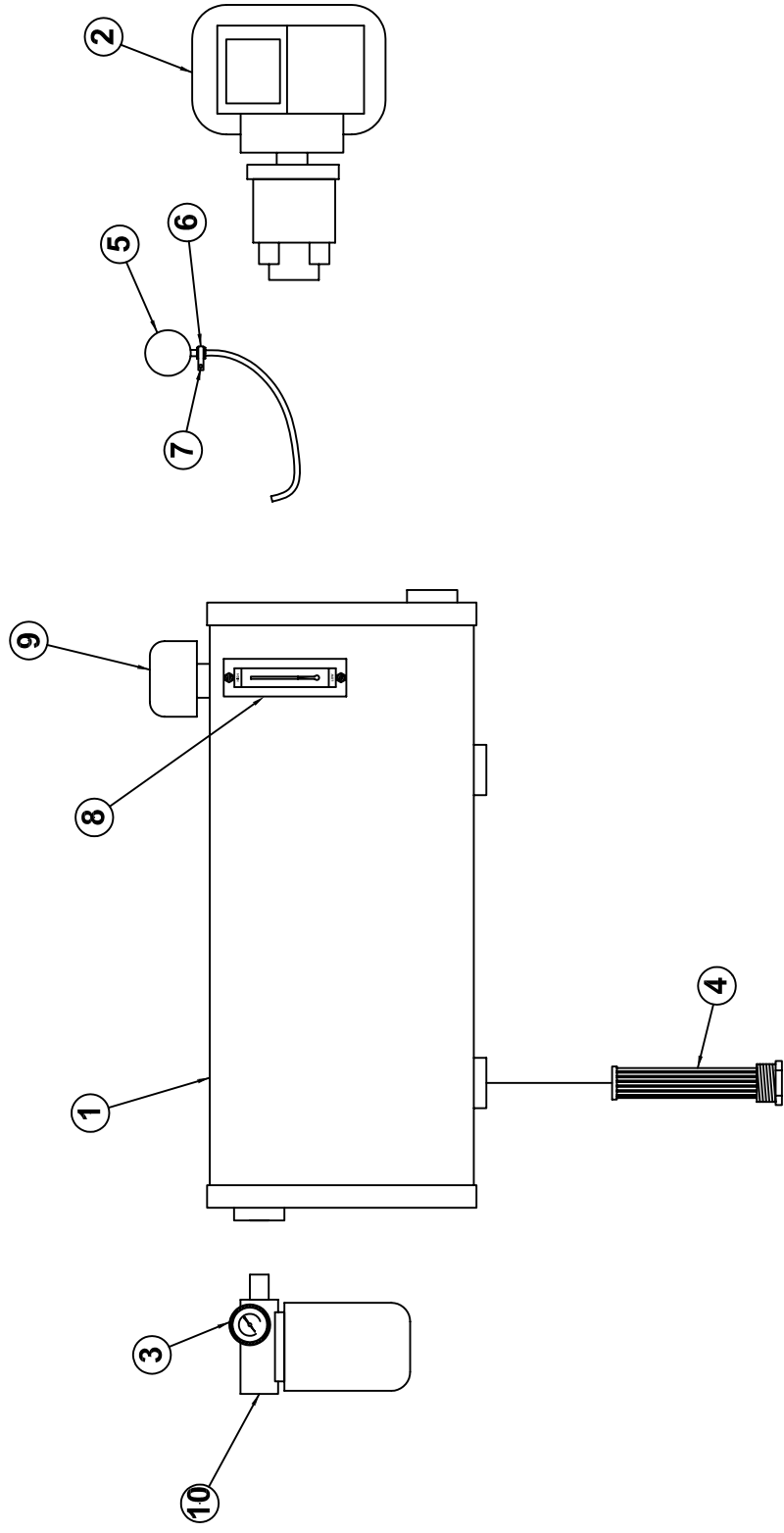
▲ HT18/25/40/50

DATE **5-26-05D**

SUPERSEDES
2-2-05C

SECTION
C400

22615



10	1	19298	FILTER ASSY, RETURN – 100 MESH
9	1	22789	FILLER / BREATHER CAP ASSEMBLY
8	1	22787	SIGHT GLASS
7	1	!HWH02520075-F	HEX WASHER HEAD 1/4-20 X 3/4 SELF TAPPING
6	1	19275	CLAMP
5	1	22730	PRESSURE GAUGE ASSEMBLY
4	1	22788	SUCTION SCREEN – 100 MESH
3	1	19297	PRESSURE GAUGE – RETURN
2	1	19296-10.0	PTO PUMP
1	1	22786	25 GAL. HYDRAULIC TANK



MANUFACTURING, INC.
CINCINNATI, OHIO

TITLE

PTO REPLACEMENT PARTS DRAWING

DATE

6-29-05

SECTION

-

SUPERSEDES

-

22783

HT40KX - PROPORTIONAL 22766-1 FIELD SERVICE LABEL KIT

ITEM	PARTNUMBER	QTY	DESCRIPTION
1	15581	1	ATTACHMENT DECAL
2	15398	1	UNPLUG PENDANT DECAL
3	22768-1	1	VALVE BANK DECAL - LEFT
4	22768-2	1	VALVE BANK DECAL - RIGHT
5	14473-1	1	OIL DECAL
6	14473-2	4	GREASE DECAL
7	22496	2	VENTURO DECAL (LARGE)
8	15401	1	UNLAWFUL TO OPERATE DECAL
9	22342-1	1	HT40KX BOOM CAPACITY DECAL (RIGHT)
10	22342-2	1	HT40KX BOOM CAPACITY DECAL (LEFT)
11	19746	2	HT40KX DECAL
12	15392	1	DANGER ELECTROCUTION HAZZARD DECAL
13	15391	1	CRANE NOT PASSENGER LIFT DECAL
14	19315-2	1	PROPORTIONAL OVERRIDE HYDRAULIC BANK DECAL
15	15390	1	CAUTION, INSTRUCTIONS DECAL
16	22499	1	KNOW YOUR SIGNALS DECAL
17	22489	1	DECAL PLACEMENT DRAWING
18	19788	2	PROPORTIONAL CONTROL DECAL
19	20834	1	MANUAL OVERRIDE INSTRUCTION LOCATION DECAL
20	▲ 17389-4	1	SMALL VENTURO
21	-	-	-
22	-	-	-
23	-	-	-
24	-	-	-
25	-	-	-
26	-	-	-
27	-	-	-
28	-	-	-
29	-	-	-
30	-	-	-
31	-	-	-
32	-	-	-
33	-	-	-
34	-	-	-
35	-	-	-



MFG., INC.
CINCINNATI, OHIO

TITLE	DATE	SECTION
FIELD SERV. LABEL KIT	9-12-06A	-
HT40KX - PROP.	SUPERCEDES 6-21-06	20844



LIMITED WARRANTY POLICY

This limited policy warrants new products of Venturo be free from defects in material and workmanship for a period of one (1) year from date of original installation. This warranty covers:

- ◆ ***Repair or replacement of product***
- ◆ ***Labor to repair or replace product***
- ◆ ***Freight to return and/or replace product***

We shall not be liable for any contingent liabilities arising out of the improper function of any products. Warranty shall become void if the product is improperly installed, modified, damaged, abused or used for application other than intended use.

WARRANTY CLAIMS

Venturo Manufacturing, Inc. will make a good faith effort for prompt correction or other adjustment with respect to any product, which proves to be defective after our inspection and within the warranty period. Before any repairs are attempted or before returning any product, your Venturo Distributor is required to obtain a warranty claim number. This number is necessary for any claim to be considered. To obtain a warranty claim number, Venturo requires the model and serial number. Only authorized Venturo Distributors can perform warranty. For the name and address of your local Venturo Distributor call the **Warranty Claim Department – 513-772-8448**.

WARNING – It is the responsibility of the installer to insure the installation is completed according to the manufacturer's recommendations, insure the ultimate user understands how to operate product in a safe manner and understands the need for regular service and maintenance by an authorized Venturo Distributor. No modifications or alterations may be made to any Venturo products without the expressed written consent of the manufacturer. Reinstallation of any Venturo product must be done by an authorized Venturo Distributor, to the standards of the industry including maintenance, service and affixing of all instruction, safety and warning decals. Users should again be instructed as to the safe operation at time of delivery. Maintenance, service, operation and safety warning decals are available on request from Venturo Manufacturing, Inc.

VENTURO MANUFACTURING, INC

DIVISION OF COLLINS ASSOCIATES, INC
12110 BEST PLACE • CINCINNATI, OHIO 45241
513.772.8448
www.venturo.com