



VENTURO
TRUCK MOUNTED CRANES

HT50KX

***HSAAAC-00 & HSBAAC-00
INSTALLATION & OWNER'S MANUAL***

TABLE OF CONTENTS

HT50KX / Std Ctrl / No Eng Ctrls (HS* AAC-00**)

SECTION 100 **DESCRIPTION & SPECIFICATIONS**

22912	INSTALLATION DIMENSIONS
18353	MOUNTING DIMENSIONS - BASE PLATE
22351	CAPACITY CHART - HT50KX

SECTION 150 **SAFETY**

15394	VEHICLE & CRANE ELECTRICAL HAZARD INFORMATION
920612	SAFETY & HAZARDS - GENERAL
19217	WINCH SAFETY WARNINGS
22171	DECAL PLACEMENT
22181A	SAFETY DECALS DRAWING & LIST
22181B	SAFETY DECALS DRAWING & LIST
22181C	SAFETY DECALS DRAWING & LIST
22181D	SAFETY DECALS DRAWING & LIST

SECTION 200 **INSTALLATION**

22172	CRANE INSTALLATION (PAGE 1 OF 2)
22173	CRANE INSTALLATION (PAGE 2 OF 2)
22345A	CRANE OPERATION & MAINTENANCE INSTRUCTIONS (PAGE 1 OF 3)
22345B	CRANE OPERATION & MAINTENANCE INSTRUCTIONS (PAGE 2 OF 3)
22174	CRANE OPERATION & MAINTENANCE INSTRUCTIONS (PAGE 3 OF 3)
22168	SAFETY SHUTOFF INSTRUCTIONS
20051	ROTATION STOP LOCATION
22826	19295 HYDRAULIC TANK DIMENSIONS
22887	PTO INSTALLATION
20698	COMPARTMENT DRAWING
22245	WIRE ROPE INSTALLATION

SECTION 400 **REPLACEMENT PARTS**

22914	HT40/50KX CRANE REPLACEMENT PARTS DRAWING
22915	HT40/50KX CRANE REPLACEMENT PARTS LIST
22916	21420 BOOM REPLACEMENT PARTS DRAWING
22917	21420 BOOM REPLACEMENT PARTS LIST
22930	21410 BOOM REPLACEMENT PARTS DRAWING
22931	21410 BOOM REPLACEMENT PARTS LIST
22907	22909 WINCH REPLACEMENT PARTS DRAWING & LIST
22943	HYDRAULIC SYSTEM COMPONENTS REPLACEMENT PARTS DRAWING
22944	HYDRAULIC SYSTEM COMPONENTS REPLACEMENT PARTS LIST
▲ 22939	22501 HYDRAULIC VALVE MANIFOLD REPLACEMENT PARTS DWG & LIST
22180	ELECTRICAL SCHEMATIC - STANDARD (NON-PROPORTIONAL)
22191	ELECTRICAL SCHEMATIC - NON-PROP SOCKET WIRING
22487	HYDRAULIC SYSTEM SCHEMATIC - STANDARD (NON-PROP) HT40KX
22078	22062 REPLACEMENT PARTS DRAWING
22918	22685 ANTI-TWO-BLOCK SYSTEM (STANDARD LEFT SIDE MOUNT)
22919	22450 ANTI-TWO-BLOCK SYSTEM (OPTIONAL RIGHT SIDE MOUNT)
22615	ENGINE START/STOP & THROTTLE CONTROL
22744	22784 PTO KIT REPLACEMENT PARTS DRAWING & LIST
22825	22785 HYDRAULIC TANK DIMENSIONS AND PORTS
22926	22924 FIELD SERVICE LABEL KIT



MFG., INC.
CINCINNATI, OHIO

TITLE
TABLE OF CONTENTS

HT50KX (HS* AAC-0*)**

DATE
9-18-09D

SUPERCEDES
11-4-08C

SECTION
-

22945

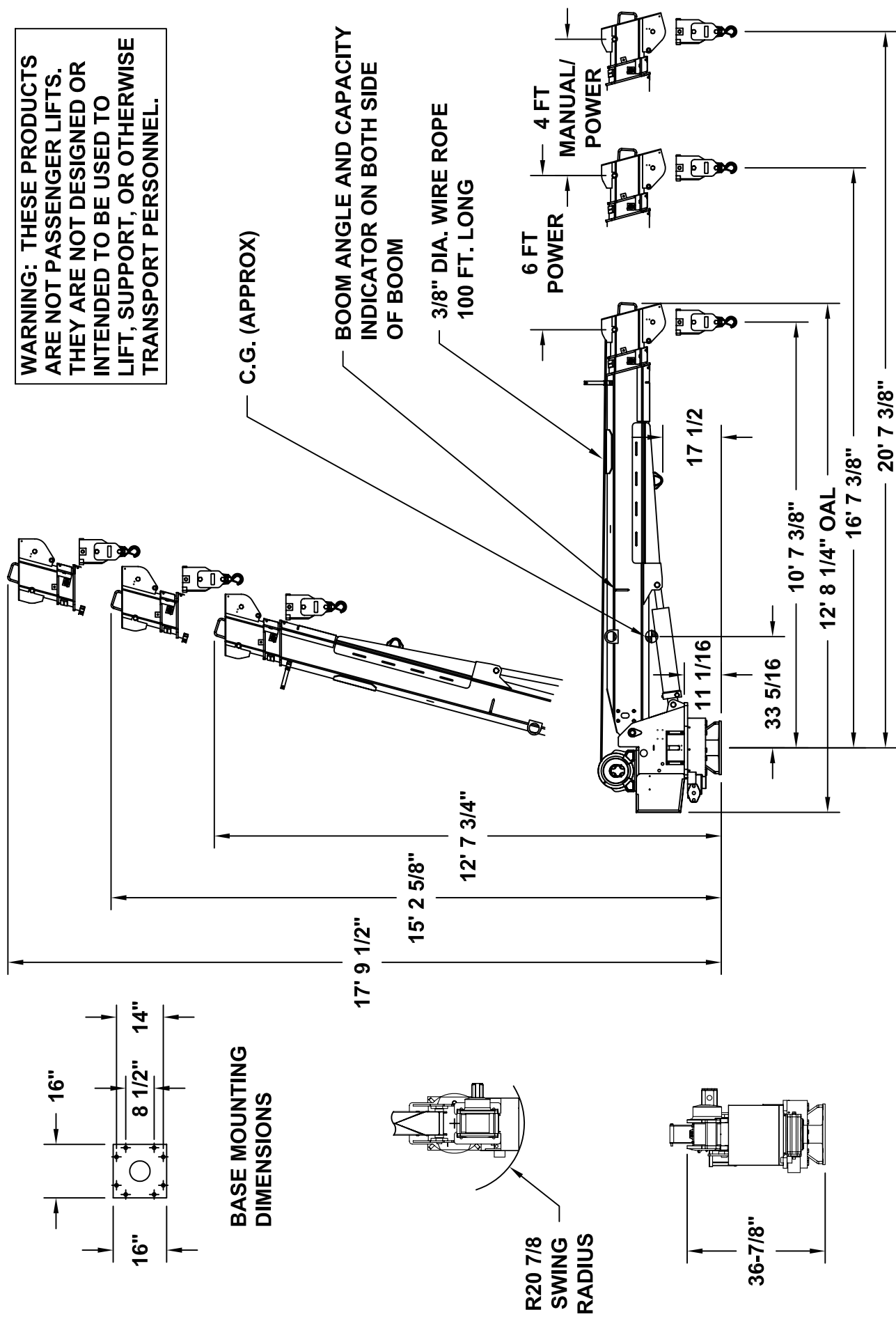
SECTION 100

DESCRIPTION

&

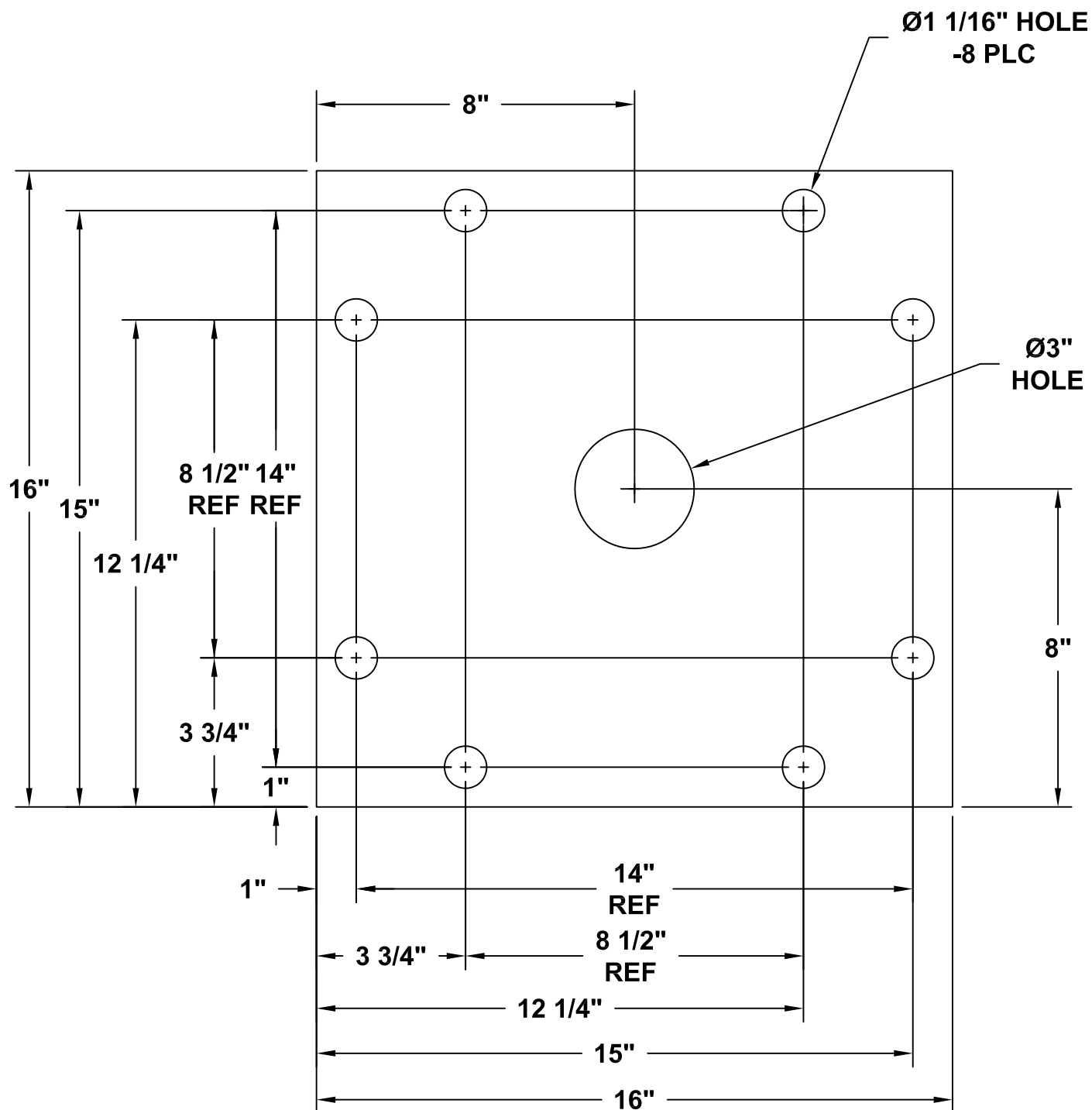
SPECIFICATIONS

WARNING: THESE PRODUCTS ARE NOT PASSENGER LIFTS. THEY ARE NOT DESIGNED OR INTENDED TO BE USED TO LIFT, SUPPORT, OR OTHERWISE TRANSPORT PERSONNEL.



VENTURO MANUFACTURING, INC. CINCINNATI, OHIO	TITLE INSTALLATION DWG		DATE 7-9-08A	SECTION C100
	HT40KX, HT50KX - 10-16-20		SUPERSEDES 9-4-07	22912

▲ HT40/50KX BASE MOUNTING DIMENSIONS



MFG., INC.
CINCINNATI, OHIO

TITLE
▲ BASE MOUNTING DIM

HT40/50KX

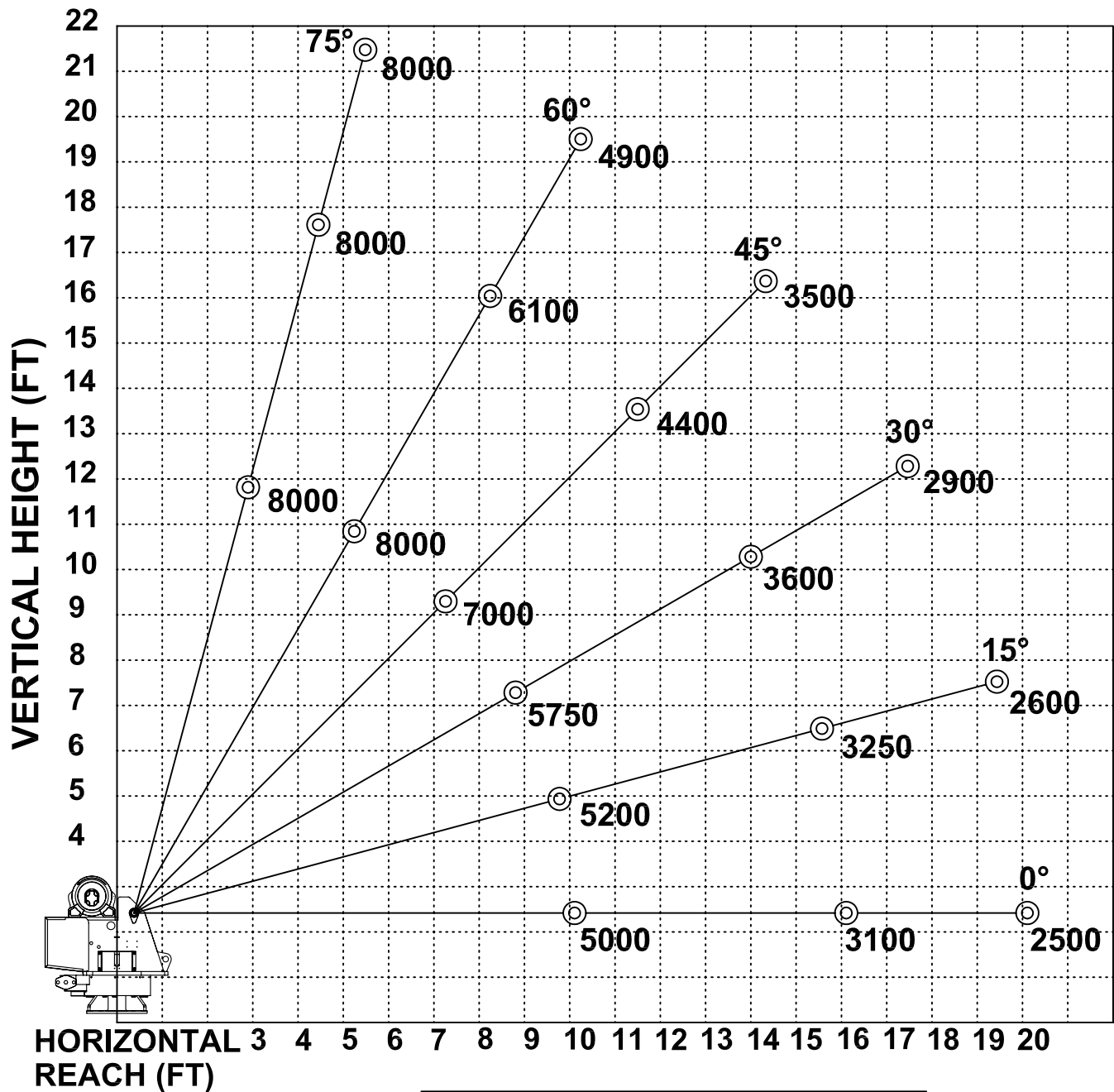
DATE
3-3-05F

SUPERSEDES
5-20-03E

SECTION
C100

18353

HT50KX - 10-16-20 BOOM MAXIMUM CAPACITY CHART



**MUST USE SNATCH BLOCK
FOR LOADS OF 4000 LBS.
AND GREATER**

SECTION 150

SAFETY

VEHICLE & CRANE MOUNTED ELECTRICAL HAZARD SIGN APPLICATION & INFORMATION

ET & HT CRANE SERIES



- ▲ SIGN NO. 15393A DISPLAYS THE INTERNATIONAL SYMBOL FOR ELECTRICITY AND WARNS OF DANGER FROM AN ELECTRICALLY CHARGED VEHICLE, CRANE, OR LOAD. FOUR ARE RECOMMENDED (ONE FOR EACH SIDE AND ONE FOR EACH END OF VEHICLE) TO BE APPLIED IN LOCATIONS WHICH ARE READILY VISIBLE TO GROUND PERSONNEL.



- ▲ SIGN NO. 15401 PROVIDES ADDITIONAL WARNING OF LEGAL REQUIREMENTS WHEN OPERATING NEAR HIGH VOLTAGE LINES. THIS SIGN IS PLACED ON THE CONTROL PENDANT SIDE OF BOOM.

REQUIRED MINIMUM CLEARANCES REFERRED TO ON SIGN NO. 15401

REQUIRED CLEARANCES FROM OVERHEAD HIGH-VOLTAGE LINES

NOMINAL VOLTAGE (kV) (PHASE TO PHASE)	MINIMUM REQUIRED CLEARANCE (FEET) *
0 - 50	10
over 50 - 200	15
over 200 - 350	20
over 350 - 500	25
over 500 - 750	35
over 750 - 1000	45

REQUIRED CLEARANCES FROM ENERGIZED HIGH-VOLTAGE CONDUCTORS (WHILE IN TRANSIT)

NOMINAL VOLTAGE (kV) (PHASE TO PHASE)	MINIMUM REQUIRED CLEARANCE (FEET) *
0 - 0.75	4
over 0.75 - 50	6
over 50 - 345	10
over 345 - 750	16
over 750 - 1000	20

* NOTE: ENVIRONMENTAL CONDITIONS SUCH AS FOG, SMOKE, OR PRECIPITATION MAY REQUIRE INCREASED CLEARANCES



MFG., INC.
CINCINNATI, OHIO

TITLE
INSTALLATION DWG

ET & HT CRANE SERIES

DATE
5-15-02H

SUPERCEDES
5-13-97G

SECTION
C150

15394

CRANE SAFETY AND HAZARDS

HT25KX, HT40KX, HT50KX

CAUTIONS

1. INSPECT VEHICLE AND CRANE, INCLUDING OPERATION, PRIOR TO USE DAILY.
2. DO NOT USE THIS EQUIPMENT EXCEPT ON SOLID, LEVEL SURFACE WITH CRANE MOUNTED ON FACTORY-RECOMMENDED TRUCK.
3. BEFORE OPERATING THE CRANE, REFER TO MAXIMUM LOAD (CAPACITY) CHART ON CRANE FOR OPERATING (LOAD) LIMITATIONS.
4. DO NOT OPERATE, WALK, OR STAND BENEATH BOOM OR A SUSPENDED LOAD.
5. ATTACH PENDANT CORD SUPPORT SNAP TO ATTACHMENT POINT BEFORE PLUGGING IN PENDANT.
6. UNPLUG PENDANT AND DISENGAGE PTO SYSTEM WHEN CRANE NOT IN USE.
7. FOR TRAVEL, BOOM MUST BE IN STOWED POSITION.

DANGER

- THIS CRANE IS NOT A PASSENGER LIFT
- IT IS NOT DESIGNED OR INTENDED TO BE USED TO LIFT, SUPPORT, OR OTHERWISE TRANSPORT PERSONNEL.

YOU MUST NOT OPERATE THIS CRANE UNLESS

1. YOU HAVE BEEN TRAINED IN THE SAFE OPERATION OF THIS CRANE
AND
2. YOU KNOW AND FOLLOW THE SAFETY AND OPERATING RECOMMENDATIONS CONTAINED IN THE MANUFACTURER'S MANUALS, YOUR EMPLOYER'S WORK RULES, AND APPLICABLE GOVERNMENT REGULATIONS. AN UNTRAINED OPERATOR SUBJECTS HIMSELF AND OTHERS TO DEATH OR SERIOUS INJURY.

ELECTROCUTION HAZARD

- THIS MACHINE IS NOT INSULATED.
- MAINTAIN SAFE CLEARANCES FROM ELECTRICAL LINES AND APPARATUS.
- YOU MUST ALLOW FOR BOOM SWAY, ROCK OR SAG, AND ELECTRICAL LINE AND LOADLINE SWAYING.
- THIS LIFTING DEVICE DOES NOT PROVIDE PROTECTION FROM CONTACT WITH OR PROXIMITY TO AN ELECTRICALLY CHARGED CONDUCTOR.
- YOU MUST MAINTAIN A CLEARANCE OF AT LEAST 10 FEET BETWEEN ANY PART OF THE CRANE, LOADLINE, OR LOAD, AND ANY ELECTRICAL LINE OR APPARATUS CARRYING UP TO 50,000 VOLTS. ADDITIONAL CLEARANCE IS REQUIRED FOR VOLTAGES IN EXCESS OF 50,000 VOLTS. REFER TO DRAWING 15394 FOR ADDITIONAL INFORMATION.
- **DEATH OR SERIOUS INJURY** WILL RESULT FROM CONTACT OR INADEQUATE CLEARANCE.



MFG., INC.
CINCINNATI, OHIO

TITLE
INSTALLATION DWG

HYDRAULIC CRANES

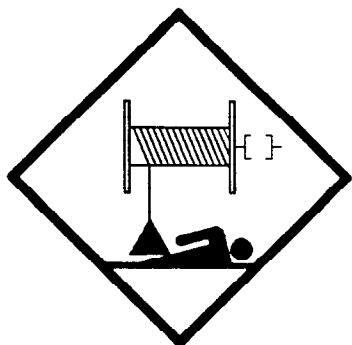
DATE
5-13-97A

SUPERCEDES
6-12-92

SECTION
C150

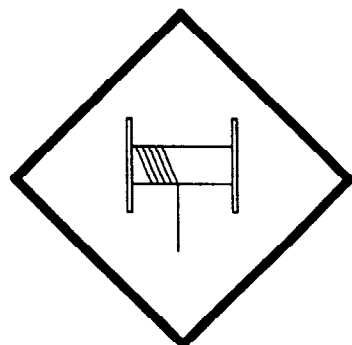
920612

WINCH SAFETY WARNINGS



DANGER

**DO NOT DISENGAGE
WINCH UNDER LOAD**



DANGER

**THE LAST FIVE
WRAPS OF WIRE ROPE
MUST BE LEFT ON
THE DRUM TO ASSIST
THE WIRE ROPE CLAMP IN
HOLDING THE LOAD**



WARNING

**WINCHES ARE NOT
TO BE USED FOR
THE LIFTING OR
MOVING OF
PERSONS**



**MFG., INC.
CINCINNATI, OHIO**

**TITLE
INSTALLATION DWG**

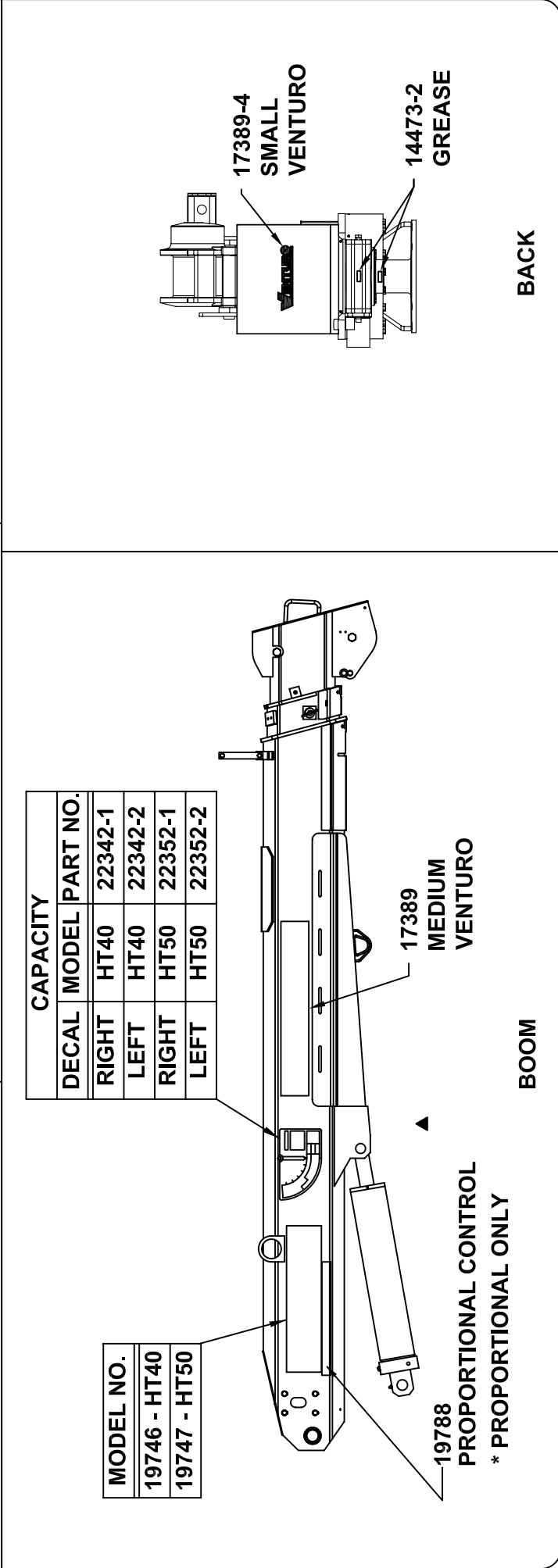
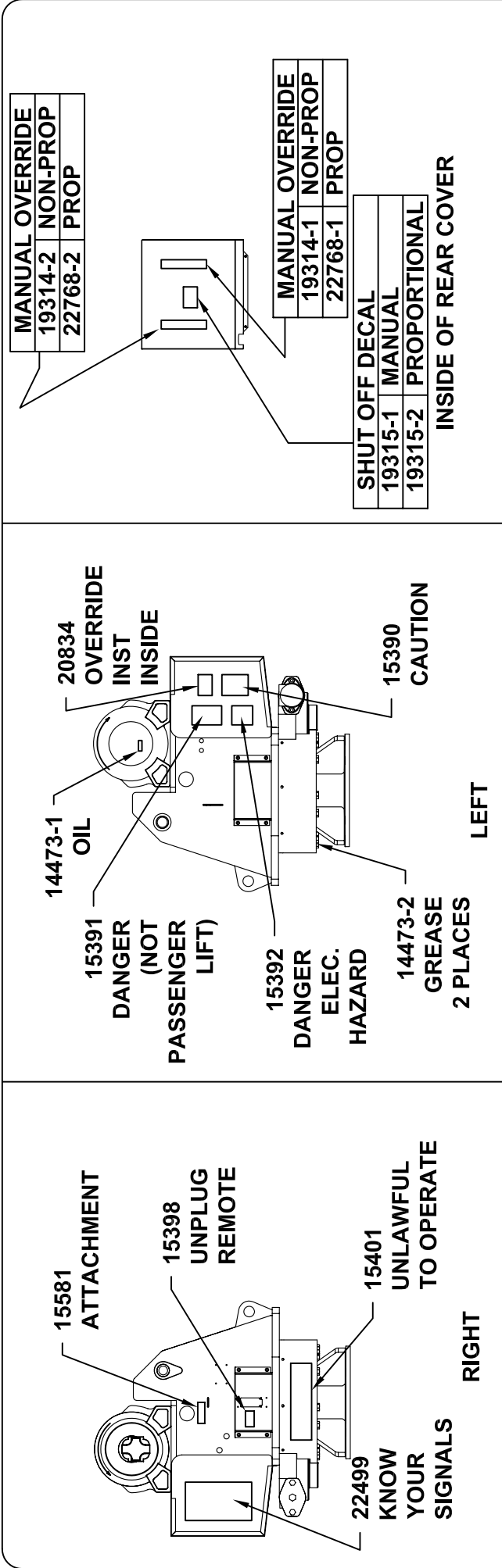
HT CRANES

**DATE
5-26-98B**

**SUPERCEDES
10-17-97A**

**SECTION
C150**

I19217



PART NO.: 15398

DECAL: UNPLUG REMOTE CONTROL

FUNCTION: To inform the operator to unplug remote control when not being used.

QUANTITY: 1

PLACEMENT: Right side of housing.



PART NO.: 15401

DECAL: UNLAWFUL TO OPERATE

FUNCTION: To inform the operator of proper operation in vicinity of power lines.

QUANTITY: 1

PLACEMENT: Right side of housing.



PART NO.: 19314-1

DECAL: MANUAL OVERRIDE (NON-PROP)

FUNCTION: To inform the operator of manual override locations.

QUANTITY: 1

PLACEMENT: Inside of rear cover.



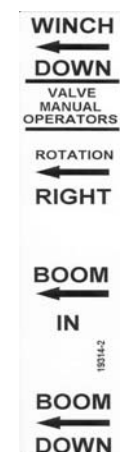
PART NO.: 19314-2

DECAL: MANUAL OVERRIDE (NON-PROP)

FUNCTION: To inform the operator of manual override locations.

QUANTITY: 1

PLACEMENT: Inside of rear cover.



MFG., INC.
CINCINNATI, OHIO

TITLE

DECAL DRAWING & LIST

DATE

12-14-05A

SECTION

C150

HT40/50KX

SUPERSEDES

5-11-05

22181A

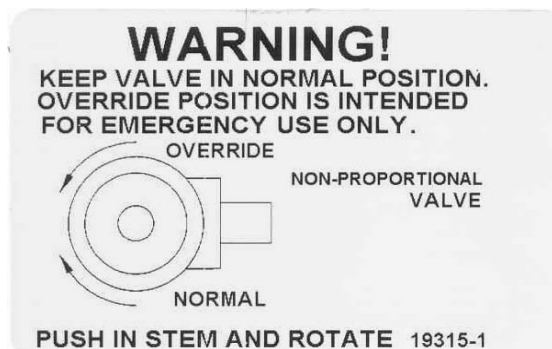
PART NO.: 19315-1

DECAL: SHUT OFF (NON-PROPORTIONAL)

FUNCTION: To show the operator how to override master shut off valve.

QUANTITY: 1

PLACEMENT: Inside rear cover.



PART NO.: 19315-2

DECAL: MANUAL OVERRIDE (PROPORTIONAL)

FUNCTION: To show the operator how to override proportional valve.

QUANTITY: 1

PLACEMENT: Inside rear cover.



PART NO.: 22768-1

DECAL: MANUAL OVERRIDE

FUNCTION: To inform the operator of manual override locations.

QUANTITY: 1

PLACEMENT: Inside rear cover.



PART NO.: 22768-2

DECAL: MANUAL OVERRIDE

FUNCTION: To inform the operator of manual override locations.

QUANTITY: 1

PLACEMENT: Inside rear cover.



MFG., INC.
CINCINNATI, OHIO

TITLE
DECAL DRAWING & LIST

HT40/50KX

DATE
12-14-05B

SUPERSEDES
9-9-05A

SECTION
C150

22181B

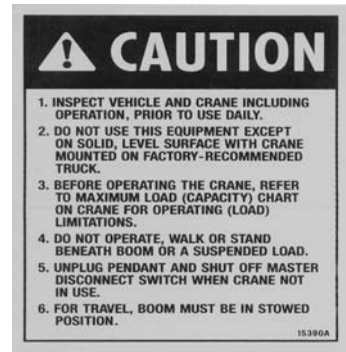
PART NO.: 15390

DECAL: CAUTION - INSPECT VEHICLE & CRANE

FUNCTION: To inform the operator of key operating requirements.

QUANTITY: 1

PLACEMENT: Left side of rear cover.



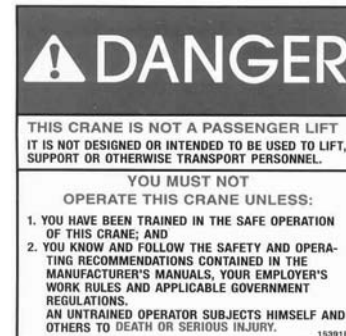
PART NO.: 15391

DECAL: DANGER - NOT PASSENGER LIFT

FUNCTION: To inform the operator not to lift, support or transport personnel, and to ensure that crane operator is adequately trained.

QUANTITY: 1

PLACEMENT: Left side of rear cover.



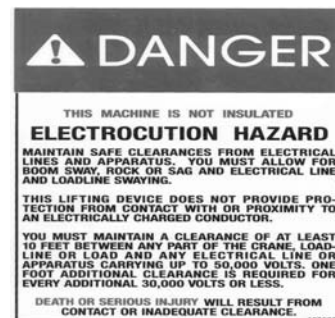
PART NO.: 15392

DECAL: DANGER - ELECTROCUTION HAZARD

FUNCTION: To inform the operator that the machine (crane) represents an electrocution hazard should it come too near or in contact with electrical voltage source.

QUANTITY: 1

PLACEMENT: Left side of rear cover.



PART NO.: 22499

DECAL: KNOW YOUR SIGNALS

FUNCTION: To inform the operator of proper signals.

QUANTITY: 1

PLACEMENT: Right side of rear cover.



MFG., INC.
CINCINNATI, OHIO

TITLE
DECAL DRAWING & LIST

HT40/50KX

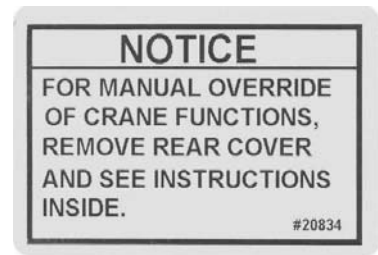
DATE
9-11-06B

SUPERSEDES
9-9-05A

SECTION
C150

22181C

PART NO.: 20834
DECAL: FOR MANUAL OVERRIDE
FUNCTION: To inform the operator of locations
of manual override instructions.
QUANTITY: 1
PLACEMENT: Left side of rear cover.



▲
PART NO.: 17389-4
DECAL: SMALL VENTURO
FUNCTION: To show manufacturer of crane.
QUANTITY: 1
PLACEMENT: Rear cover.



MFG., INC.
CINCINNATI, OHIO

TITLE

DECAL DRAWING & LIST

DATE

9-11-06A

SECTION

C150

SUPERSEDES

12-15-05

HT40/50KX

22181D

SECTION 200

INSTALLATION

CRANE INSTALLATION

HT40KX, HT50KX

BODY REINFORCEMENT

The truck body must be reinforced and outriggers provided to withstand the combined loads resulting from lifting and the weight of the crane and boom.

The maximum combined overturning moment for the HT40KX is 45,000 ft. lbs. and for the HT50KX is 55,000 ft. lbs.

The maximum vertical load for the HT40KX is 7100 lbs. and for the HT50KX is 9300 lbs.

CRANE MOUNTING

The crane base plate or mounting pedestal must be bolted to the body reinforcing plate with eight (8) grade five (5) bolts of 1" dia. with either coarse or fine threads. A 6" dia. hose clearance hole must be cut in this plate to allow the hoses to swing and coil freely.

ROTATION POSITIONING

The HT cranes are shipped with the boom rotated as shown on drawing 20051. It can be in any position that pleases the user since the boom can always reach the storage and travel position by rotating one way or the other.

HYDRAULIC CONNECTIONS

The crane is furnished with a pressure, return and a case drain hose that come down through the center of the housing. Included in the installation kit are two hydraulic swivels and two more hoses. These hoses and swivels are to be arranged in the compartment or pedestal below the crane as shown on drawing 20698 (non-proportional), or 22913 (proportional) using the angle bulkhead fittings also furnished in the installation kit. The case drain hose must return to the tank unrestricted.

These hoses are to be connected in a relaxed position while the crane is at the midpoint of the 400 degree rotation range -- regardless of the final position of the boom during storage/travel.

The bulkhead fittings may be located on any side of the compartment relative to the middle of rotation position.

NOTE: If you purchased one of Venturo's hydraulic packages (P/N 19294-X.XXX), you will have received our pressure gauge kit. This kit includes a gauge, hose and bulkhead "T" fitting and should be installed on the pressure hose.



MFG., INC.
CINCINNATI, OHIO

TITLE
INSTALLATION DWG

HT40KX, HT50KX

DATE
11-4-08A

SUPERCEDES
5-13-05

SECTION
C200

22172

ELECTRICAL CONNECTIONS

A 25 ft. electrical power lead - intended for 12V DC only - also comes down through the center of the crane base plate with the hoses. This lead should be looped in the compartment so that it remains relaxed throughout the 400 degree rotation of the crane.

A 15amp circuit breaker is mounted on the crane and protects the crane's internal wiring and solenoid coils. The 15amp circuit breaker does not protect the 25 foot electrical power lead. For added protection, the 25 ft. lead can be connected to a 15-20 amp protected circuit that, if possible, is powered only when the vehicle engine is running

HYDRAULIC FLUID

<u>Average Climate</u>	<u>Type of Oil</u>
Cold to Moderate	ISO Grade AW 46
Warm to Hot	ISO Grade AW 68

The fluid should have the highest anti-wear characteristics and treated to inhibit rust and oxidation.

HYDRAULIC HOSES & LINES

The minimum sizes for lines and hoses are as follows:

	NON-PROP	PROP
PRESSURE	3/8"	1/2"
RETURN	1/2"	5/8"
SUCTION	3/4"	1-1/4"

RESERVOIR

The PTO reservoir should have a capacity of 10 gallons (non-proportional) or 25 gallons (proportional) fitted with 100 mesh suction screen, 10 micron return line filter, and filler/breather cap.

PTO PUMP

The PTO pump should be sized to allow an engine idle speed range that will deliver approximately 2.5 GPM for the HT40KX standard (non-proportional), 12.0 GPM for the HT40KX proportional, 3.0 GPM for the HT50KX standard or 12.0 GPM for the HT50KX proportional. The crane's relief pressure is set at 3000 psi.

PTO START-UP

Before connecting the PTO system to the crane pressure and return hoses, connect the PTO pressure and return lines together at the bulkhead. Operate the PTO system for about two (2) minutes per gallon of reservoir capacity (10 gallon reservoir 20 minutes) to flush out the lines and filter all the fluid several times.

ENGINE START/STOP & THROTTLE CONTROL

If your crane was purchased with optional engine start/stop and throttle control, refer to drawing 22615 in the replacement parts section for further information.



MFG., INC.
CINCINNATI, OHIO

TITLE
INSTALLATION DWG

HT40KX, HT50KX

DATE
11-4-08B

SUPERCEDES
2-20-06A

SECTION
C200

22173

CRANE OPERATION AND MAINTENANCE INSTRUCTIONS

HT40KX, HT50KX

SAFETY

Before operating this crane, read and understand these instructions, the 920612 Crane Safety and Hazards Information Sheet, and review all safety & instruction labels on the crane.

CRANE INSPECTION

Before operating this crane, inspect for wear, damage, or oil leakage. After the wire rope has been run out, check for wear, kinks, and broken strands. Check the hook and safety latch for damage. Correct any problems before using the crane.

CAPACITY

Before operating this crane, review the capacity charts on the sides of the boom to relate the load to be lifted to the boom length and angle. The boom angle is shown by a gravity arrow.

SNATCH BLOCK

If the load exceeds 3000 lbs.-HT40KX or 4000 lbs.-HT50KX or if reduced winching speed for better control of smaller loads is required, use the snatch block to rig the crane for two part line operation.

CONTROLS

This crane is operated by a remote control pendant. The pendant should be unplugged and stored in a compartment when the crane is not in use.

Before plugging the pendant in, inspect the plug, socket, cord, pendant head, and switches for damage. Actuate all four switches both ways to verify that they all have the same feel and sound and that they return to the center position.

Plug the pendant into the socket on the right side of the crane and snap the strain relief tether to the crane housing.

PTO SYSTEM

Check the hydraulic fluid level in the PTO system reservoir. Engage PTO and set the engine idle speed to provide the desired hydraulic flow rate per the PTO system instructions. A lower idle setting may be used for more delicate spotting of loads if required.

CRANE OPERATION

Use "Winch Down" to release tension on the wire rope to unhook it from the storage tie down position.

Use "Boom Up" to elevate the boom from the boom rest position.

Avoid repeated rapid reversals of the control switches. This can cause the load to swing.

Check all control functions to see that they are working as described in the following section.



MFG., INC.
CINCINNATI, OHIO

TITLE
INSTALLATION DWG

HT40KX, HT50KX

DATE
8-12-99B

SUPERCEDES
7-17-97

SECTION
C200

22345a

CONTROL FUNCTIONS

WINCH "UP" and "DOWN" - Raises and lowers the load with the winch.

BOOM "UP" and "DOWN" - Raises and lowers the boom elevation angle. The boom elevates from 8 degrees below horizontal to 75 degrees above horizontal.

BOOM "OUT" and "IN" - Extends and retracts the boom. The boom hydraulic extension stroke is 6 ft. or 10 ft. ▲

ROTATION "L" and "R" - Controls the left and right direction of the crane rotation. The crane rotation is limited to 400 degrees.

POWER - (Non Proportional Systems) Energizes safety shutoff valve. See page 22328 for detailed operations instructions and warnings.

TRIGGER (Proportional Systems Only) - Varies the flow rate delivered to the crane valve. The farther the trigger is pulled, the faster the selected crane function operates.

OVERLOAD SENSING SYSTEM

This crane is equipped with an Overload Sensing System. If the capacity of the crane is exceeded, the "Winch Up", "Boom Down", and "Boom Out" functions will be shut down. The "Winch Down", "Boom Up", and "Boom In" functions will continue to operate and can be used to relieve the overload condition. The "Rotation" function also will continue to operate.

For crane models HT25 serial numbers 80157, HT40 serial numbers 84092 and HT50 serial numbers 85086 and below, the Overload system is inoperative if the boom elevation is at the bottom or top limit of travel. To relieve this condition, raise or lower the boom slightly before lifting the load. Cranes with serial numbers above the aforementioned have been modified to allow the Overload system to remain active at the top of boom travel.

TWO-BLOCK SENSING SYSTEM

This crane is equipped with an anti two-block device that is mounted at the tip of the boom. If the snatch block/overhaul weight contacts the device the "Winch Up", "Boom Down", and "Boom Out" functions are disabled. The "Winch Down", "Boom Up", and "Boom In" functions will continue to operate and can be used to relieve the two-block condition. Refer to Drawing 22449 for replacement parts and configuration information.

TELESCOPIC HEXAGONAL BOOM

The hexagonal shaped boom shall telescope to provide a horizontal reach range of 10 ft. to 20 ft. using a hydraulic power extension cylinder with a 10 ft. stroke. See page 22930. A 6 ft. hydraulic ▲ power extension and a 4 ft. manual extension section is also available. See page 22917.

TRUCK SETUP & OUTRIGGERS

1. The truck should be parked on ground that is as level and as firm as possible when using the crane.
2. The center of the crane should be positioned close enough to the job so that it can be operated at a reach that puts the load within the rated capacity of the crane.



MFG., INC.
CINCINNATI, OHIO

TITLE
INSTALLATION DWG

HT40KX, HT50KX

DATE
11-4-08F

SUPERCEDES
3-4-03E

SECTION
C200

22345b

3. Set the vehicle parking brake and put the vehicle transmission in "park" if it is an automatic.
4. Deploy the outriggers to help stabilize the vehicle against rocking or overturning when lifting with the crane.

PREPARATION FOR TRAVEL

1. Return the outriggers to the stowed position. Install and secure all pins.
2. Stow the crane boom in the boom support.
3. Hook the winch line to a tie down point on the body or pedestal and apply tension.
4. Disengage the PTO pump and idle speed control.
5. Unplug the control pendant and store in a body compartment or the cab.

MAINTENANCE

The crane requires only periodic lubrication. As a standard procedure, this can be done at the time the vehicle is serviced.

The winch planetary gearbox lube should be maintained at the level plug.

To ensure optimal winch performance, the following lube schedule and lube specifications should be followed:

Initial Change - after 6 weeks or 10 hours of operation.

Periodic Change - on an annual basis or every 50 hours of operation.

<u>Temp Range (°F)</u>	<u>Winch Hydraulic Oil</u>
120 to 10	SAE 50
40 to -25	75W90
30 to -50	Conoco DN600 or equivalent

Service grease fittings and rotation gear with molybdenum-disulfide graphite-filled lithium-based extreme pressure grease.

Grease fitting locations:

- Boom pivot at rear of boom
- Speed reducer (2 fittings)
- Elevation cylinder tail clevis
- Bottom of Swing Bearing (2 fittings)

Remove rear cover and check all hydraulic tube and hose fittings for tightness.

Check electrical connections for looseness and corrosion.



MFG., INC.
CINCINNATI, OHIO

TITLE

INSTALLATION DWG

DATE

2-3-09A

SECTION

C200

HT40KX, HT50KX, HT66KX

SUPERCEDES

5-13-05

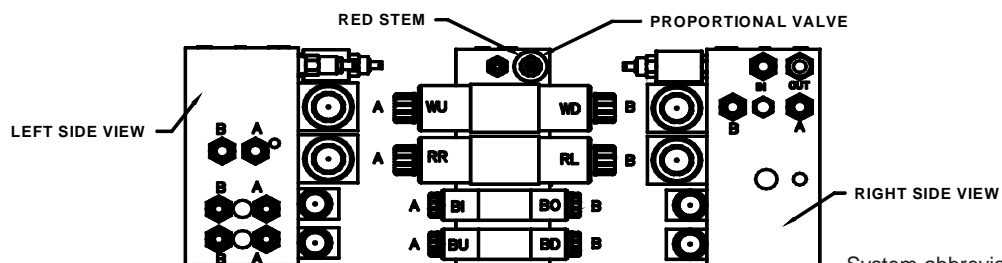
22174

EXPLANATION OF HYDRAULIC VALVE SYSTEM

OVERVIEW

This proportional crane utilizes a proportional valve, which controls the rate at which the hydraulic fluid flows through the valve bank. When the proportional valve is fully closed, hydraulic fluid bypasses the valve bank and returns directly to the tank. When the proportional valve is fully open, hydraulic fluid cycles through the valve bank and allows the crane to function at full speed. When the proportional valve is at any setting between, a portion of the fluid is allowed through the valve bank, with the remainder returning directly to the tank.

The four crane functions (winch, rotation, boom elevation, and boom extension) are controlled by four separate valve sections. Each valve section has two solenoid coils (and two manual overrides) which control the direction that the function operates (e.g. winch up vs. winch down). For a given crane function and direction (e.g. winch up) the solenoid coil and the associated manual override lie on the same side of the valve bank (both “push”).



System abbreviations are as follows:

WD – Winch Down	WU – Winch Up
RR – Rotation Right	RL – Rotation Left
BI – Boom In (Ext.)	BO – Boom Out (Ext.)
BD – Boom Down (Elev.)	BU – Boom Up (Elev.)

MANUAL OVERRIDE SYSTEM

Should an electrical failure occur, your Venturo crane can be operated manually. **The manual overrides are intended for emergency use only and should not be used for normal operation.**

To operate in manual override mode:

- Override the proportional valve by turning the red stem on the valve as stated below.
 - For override operation, rotate stem clockwise (the farther the stem is turned the faster the crane will operate).
 - To return to normal operation, rotate the stem counterclockwise until it stops.
- Determine the coil/override associated with the function you wish to operate, then insert a small diameter object (an allen wrench works well) into the detent on the end of the valve stem and press firmly inward. For example, pushing the stem labeled A on the first bank (refer to the illustration) will actuate winch up.

Warning! For normal crane operation, the proportional valve must be in the “normal” position (as described above). To verify “normal” operation, you may set the pendant (or radio) control aside and actuate a single crane function by pushing “in” on any of the manual override pins, located at the ends of each function control valve. If that function operates, the proportional valve is still in manual override. Check the position of the proportional valve “red thumb screw” to insure that it is fully counterclockwise.

EMERGENCY STOP

In the unlikely event that a function of the crane does not stop once the function’s toggle switch is released, the Proportional crane can be stopped by releasing the trigger.



MFG., INC.
CINCINNATI, OHIO

TITLE
HYDRAULIC SYSTEM

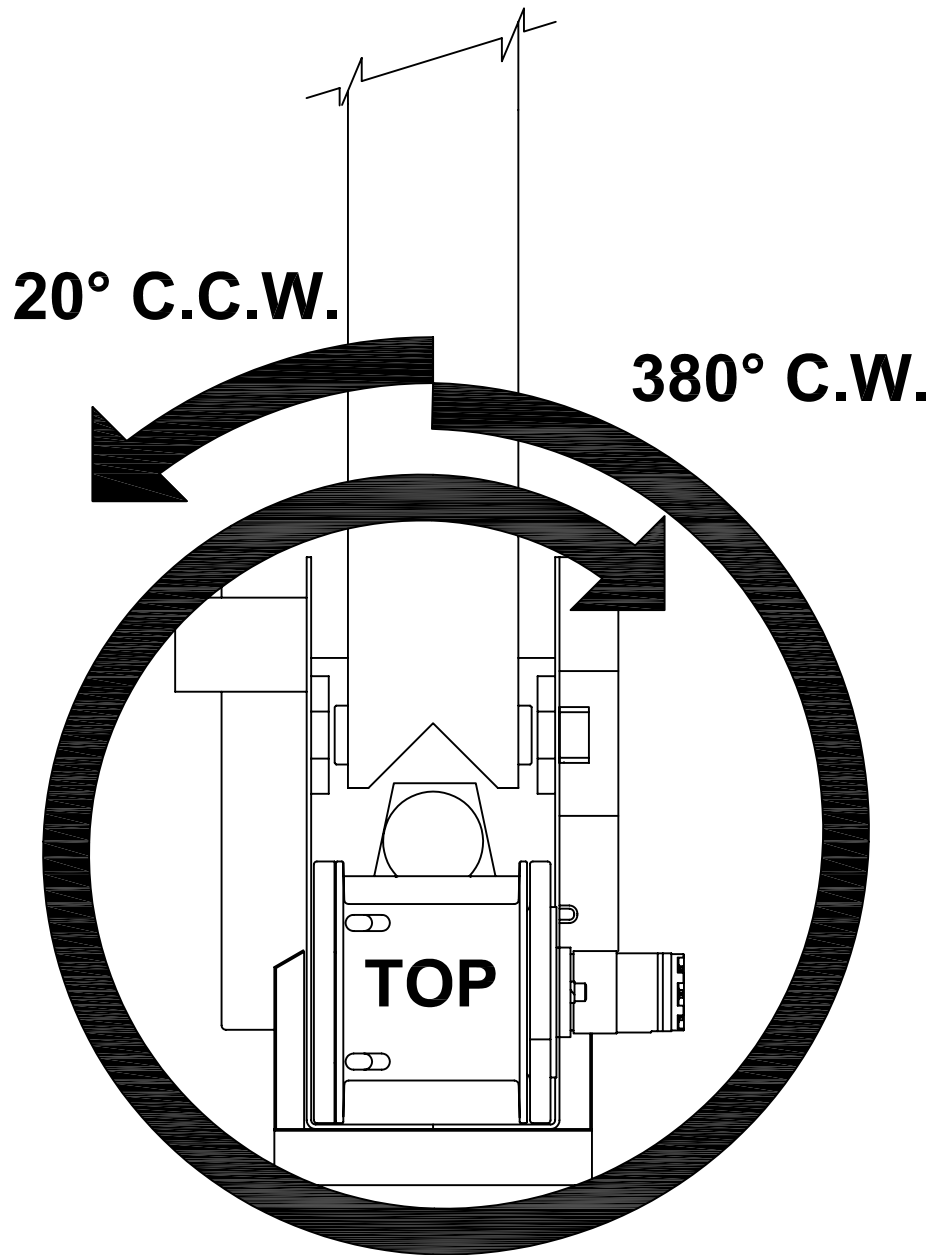
HT40/50 - PROP

DATE
5-26-05

SUPERCEDES
-

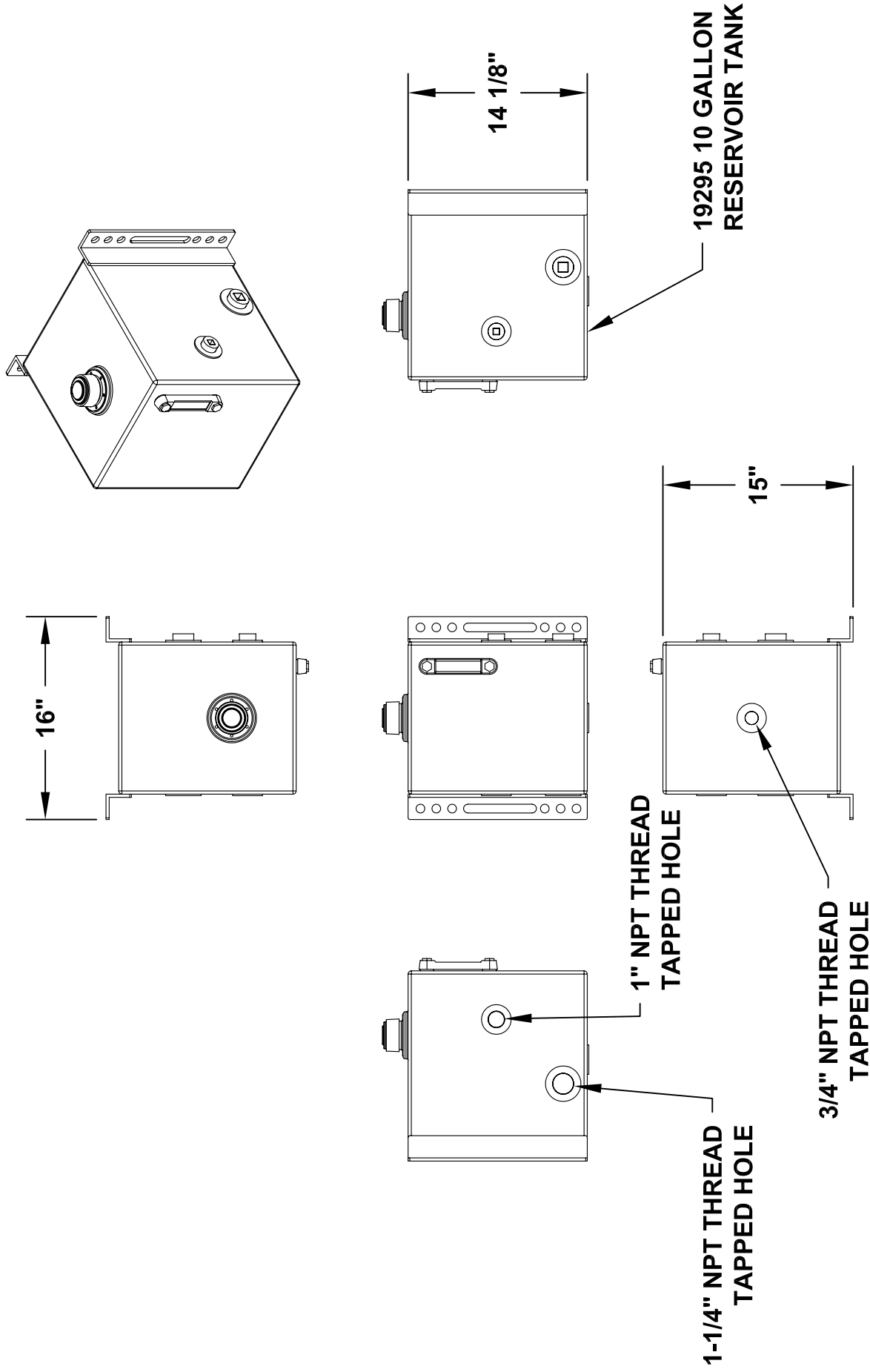
SECTION
C200

22168



This Venturo crane is shipped with the rotation orientation as shown above. To change the orientation rotate crane base prior to mounting to suit your application.

19295 10 GALLON HYDRAULIC TANK



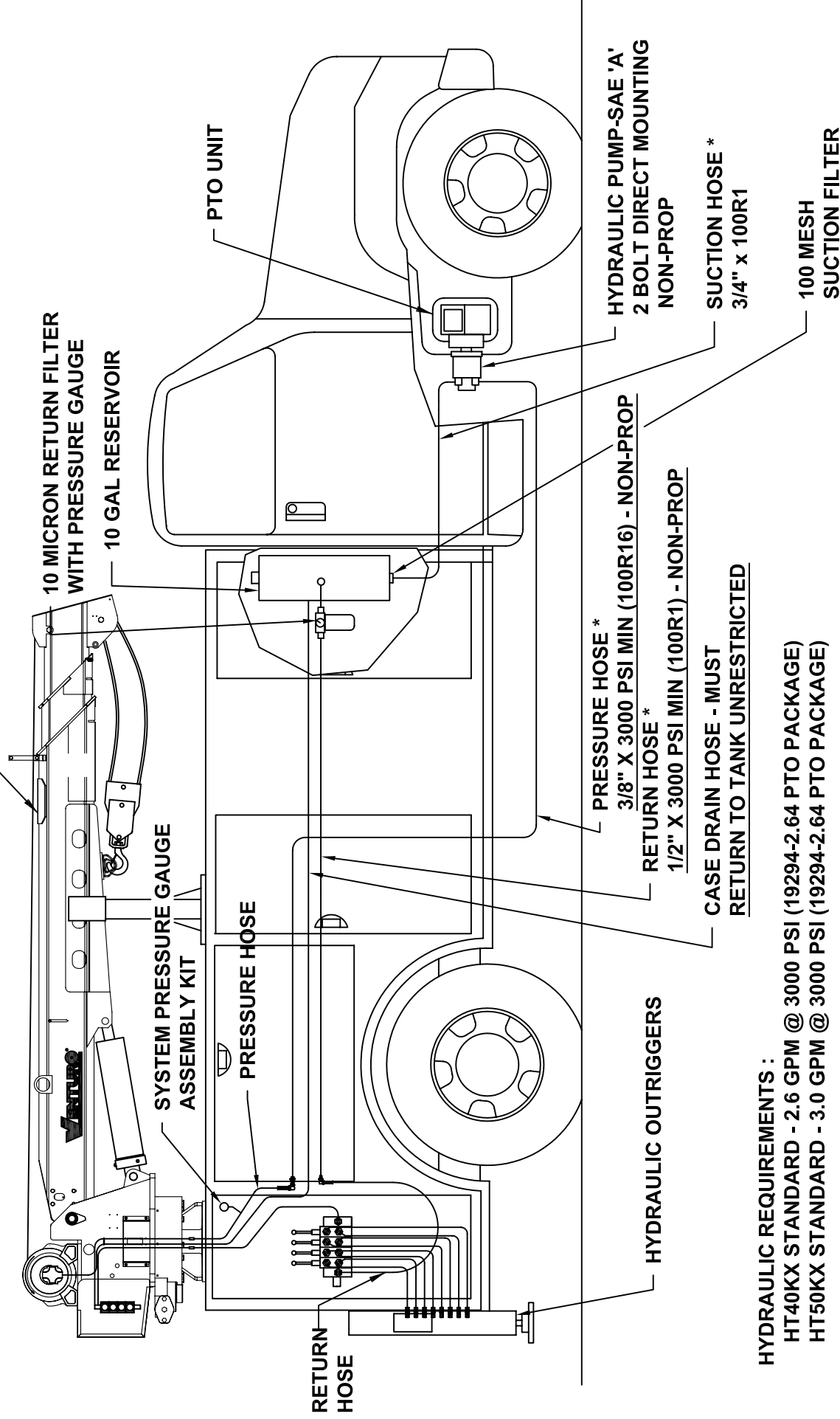
VENTURO [®] MANUFACTURING, INC. CINCINNATI, OHIO	TITLE 10 GALLON HYDRAULIC TANK		DATE 3-17-06	SECTION -
	-		SUPERSEDES -	22826



CAUTION: THE CASE DRAIN LINE FROM THE WINCH MUST HAVE AN UNRESTRICTED PATH TO TANK/RESERVOIR.

HT40/50KX NON-PROPORTIONAL CRANE

FOR INFORMATION ON OUR
PTO PACKAGES REFERENCE 22448



HYDRAULIC REQUIREMENTS :

HT40KX STANDARD - 2.6 GPM @ 3000 PSI (19294-2.64 PTO PACKAGE)

HT50KX STANDARD - 3.0 GPM @ 3000 PSI (19294-2.64 PTO PACKAGE)

SEE INSTALLATION INSTRUCTIONS 22344 (2 PAGES).

* HOSES OR FITTINGS BETWEEN PUMP, RESERVOIR, AND CRANE NOT INCLUDED.



MANUFACTURING, INC.
CINCINNATI, OHIO

TITLE

INSTALLATION DWG

DATE

7-21-08A

SECTION

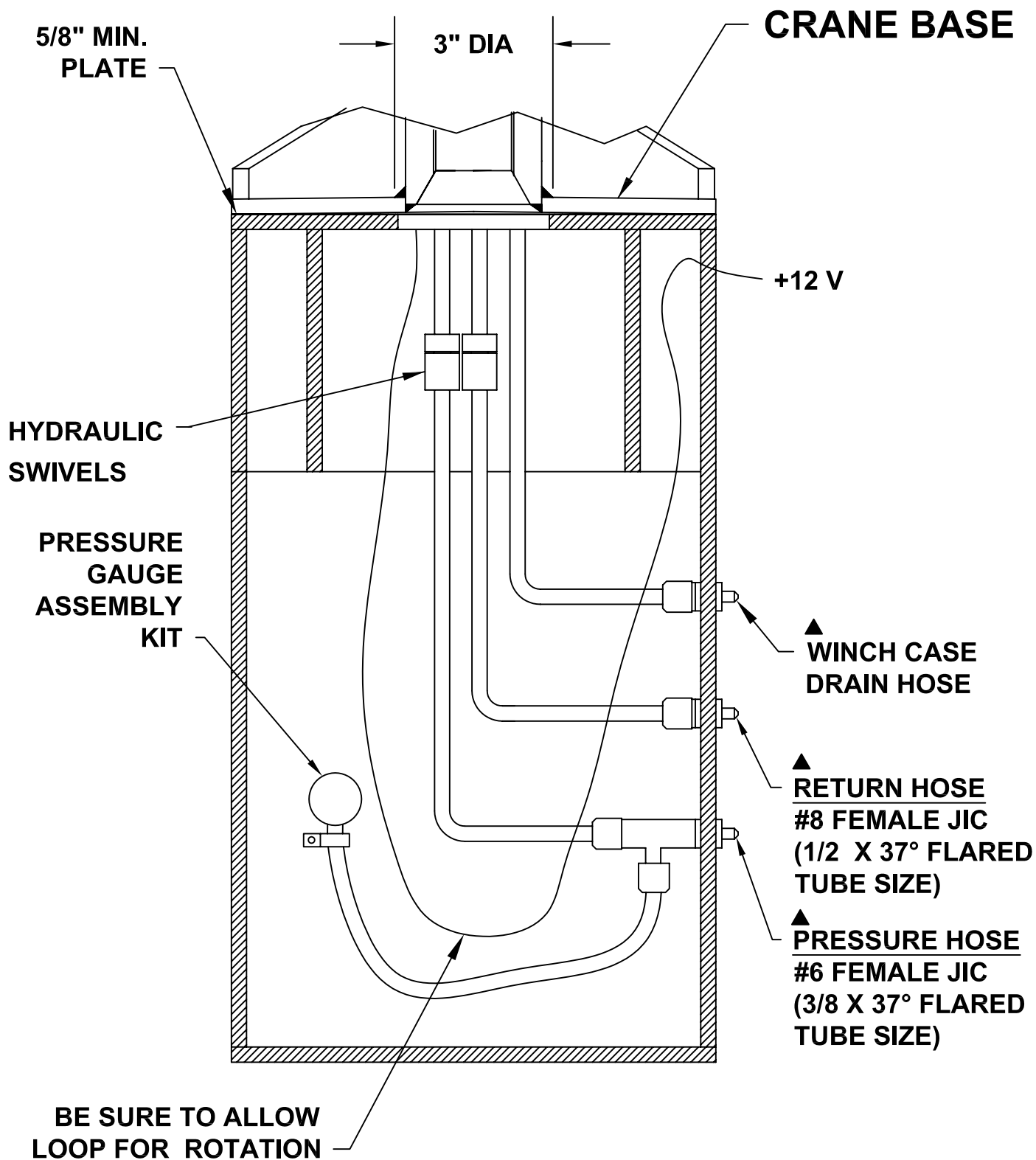
C200

SUPERSEDES

11-29-07

PTO INST - HT40/50 (NON-PROPORTIONAL)

22887



MFG., INC.
CINCINNATI, OHIO

TITLE
CRANE & HOSE INST.

HT40/50KX - NON-PROP

DATE
11-29-07E

SUPERSEDES
10-5-06D

SECTION
C200

20698

WIRE ROPE INSTALLATION

STEP 1: UNWIND COIL OF WIRE ROPE BY 'ROLLING' ALONG THE FLOOR. THIS WILL PREVENT 'KINKING'.

STEP 2: INSERT WIRE ROPE END THROUGH ANTI-TWO-BLOCK WEIGHT.

STEP 3: INSERT WIRE ROPE END INTO POCKET OPENING ON WINCH AND THROUGH WEDGE POCKET AS SHOWN IN (FIG 1).

CAUTION: IF THE WIRE ROPE IS NOT INSTALLED FOR THE CORRECT DRUM ROTATION, THE WINCH BRAKE VALVE WILL NOT HOLD THE LOAD.

CAUTION: THERE MUST ALWAYS BE AT LEAST (3) TURNS OF WIRE ROPE ON THE WINCH DRUM WHILE UNDER LOAD.

NOTE:  SOME WINCHES WILL BE SUPPLIED WITH A HEX NUT IN LIEU OF A WEDGE FOR INSTALLING THE WIRE ROPE.

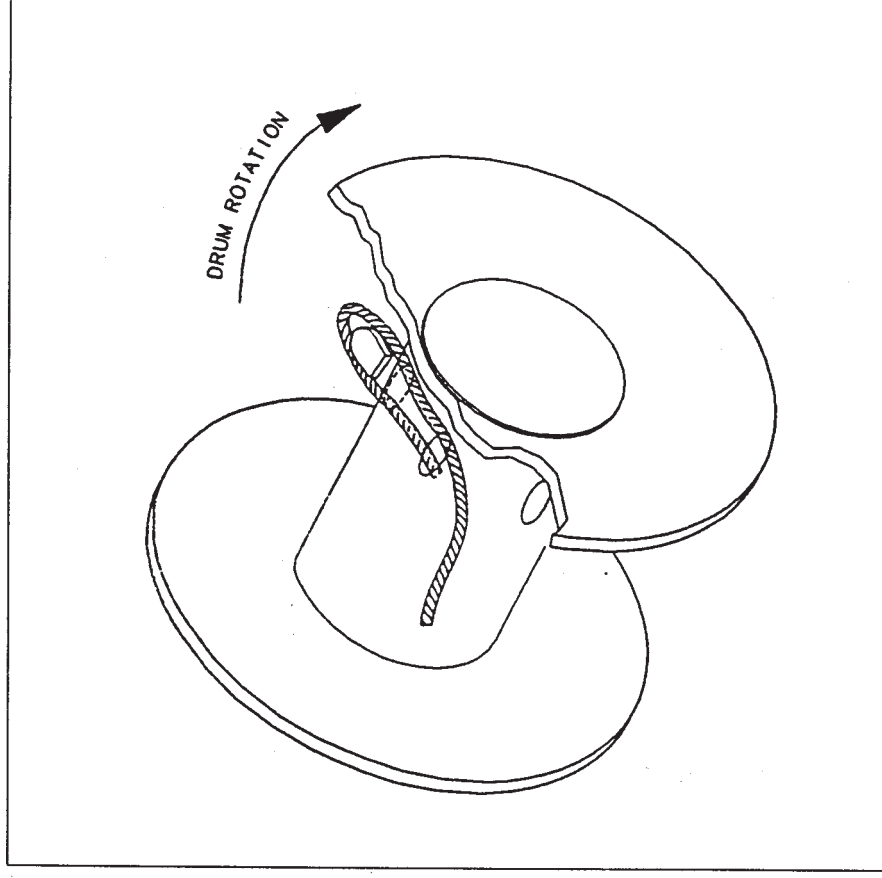


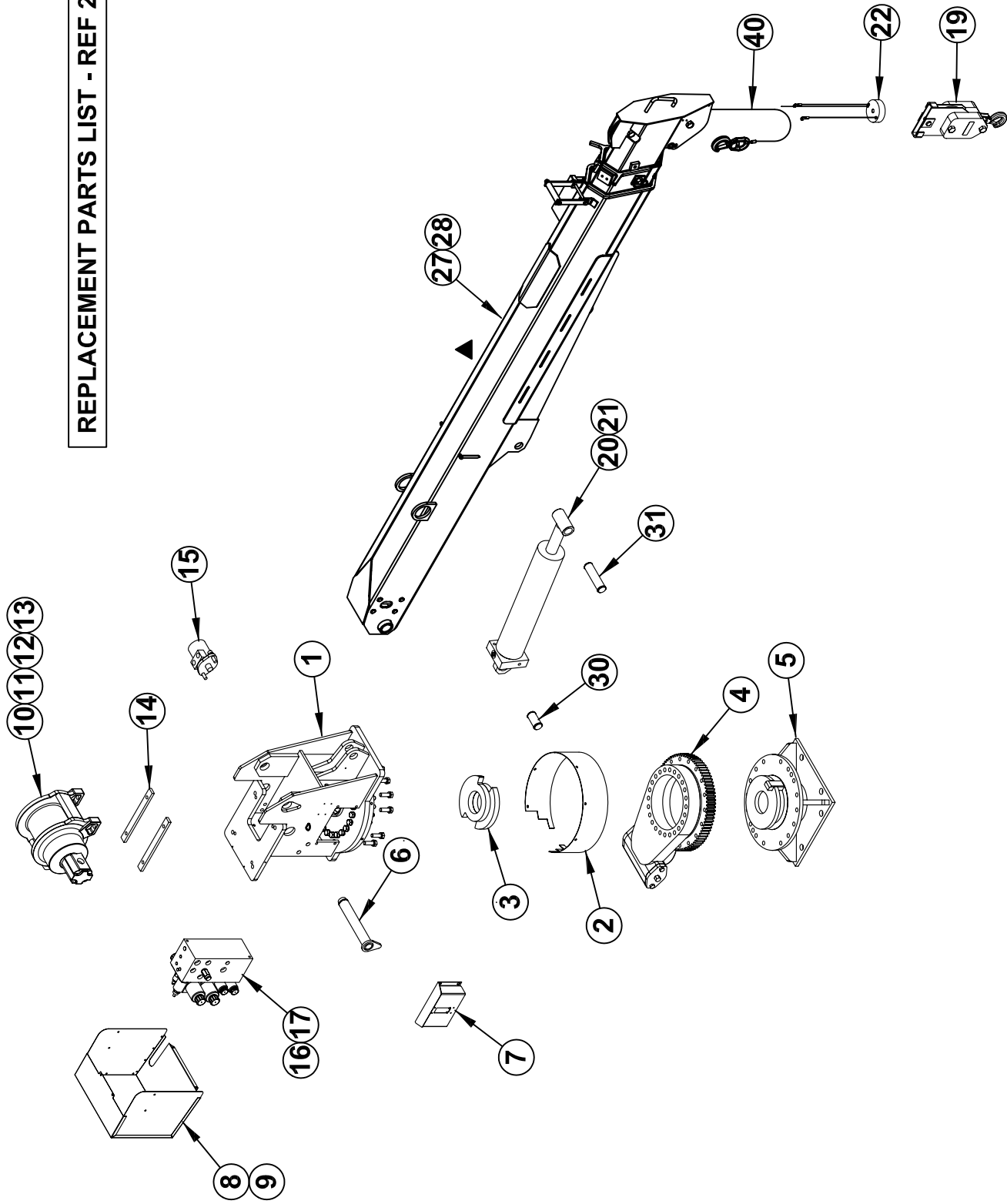
FIG 1

SECTION 400

PARTS



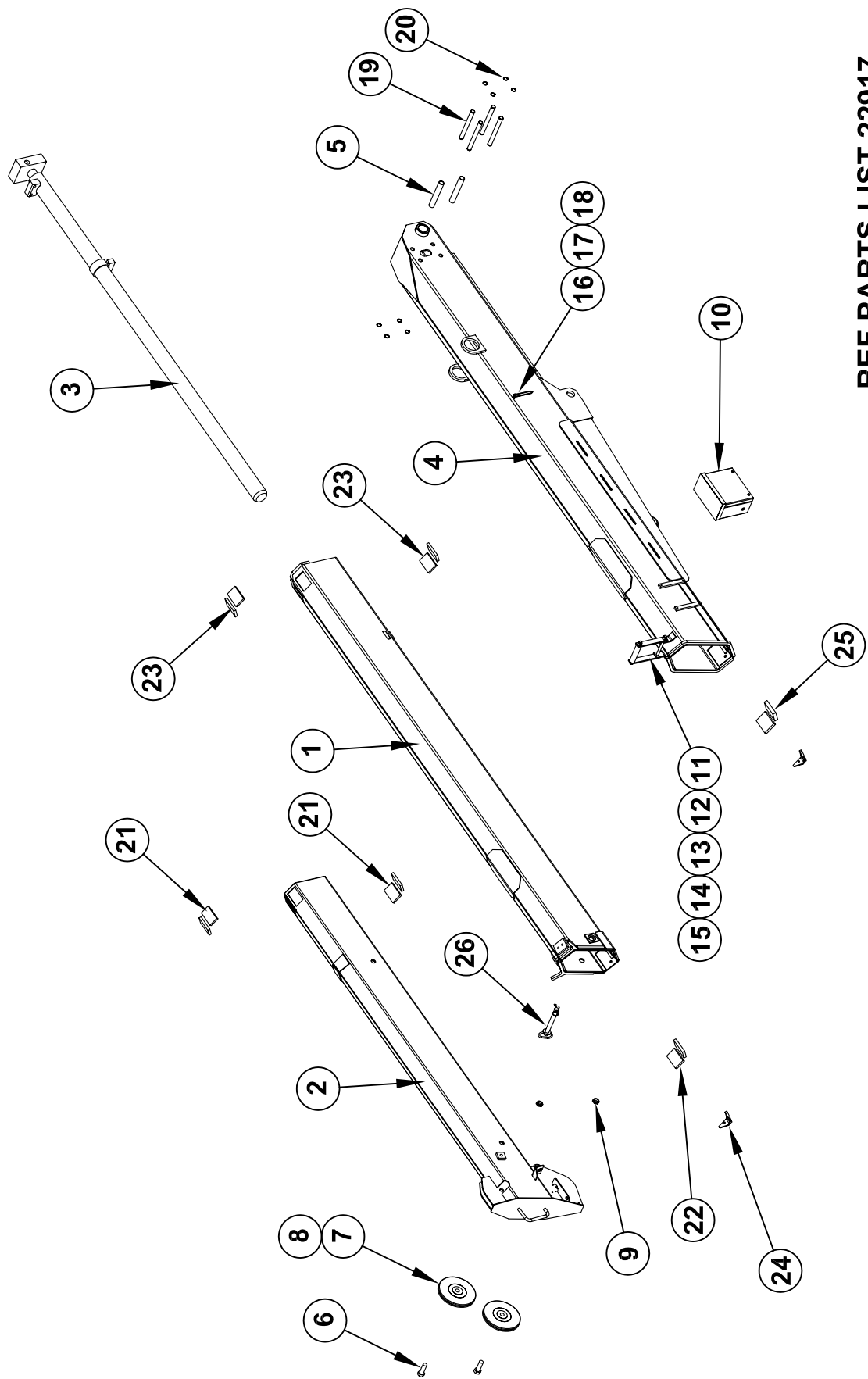
REPLACEMENT PARTS LIST - REF 22915




ITEM #	PART #	DESCRIPTION	ITEM #	PART #	DESCRIPTION
1	22840	HOUSING WELDED ASSEMBLY	41	-	-
2	22726	OUTERRING	42	-	-
3	22702	ROTATION STOPPING WELDED ASSEMBLY	43	-	-
4	22704	SLEWING RING	44	-	-
5	22710	PEDESTAL WELDED ASSEMBLY	45	-	-
6	22721	PIVOT PIN MAIN BOOM PIVOT	46	-	-
7	22715	SIDE COVER	47	-	-
8	22841	REAR HYD. VALVE COVER - NON-PROP.	48	-	-
9	22842	REAR HYD. VALVE COVER - PROP.	49	-	-
10	22828	WINCH - 3000 LB (SINGLE LINE) - HT40KX - NON-PROP	50	-	-
11	22829	WINCH - 3000 LB (SINGLE LINE) - HT40KX - PROP	51	22920	FIELD SERVICE LABEL KIT - HT40KX NON-PROP.
12	22909	WINCH - 4000 LB (SINGLE LINE) - HT50KX - NON-PROP	52	22921	FIELD SERVICE LABEL KIT - HT40KX PROPORTIONAL
13	22830	WINCH - 4000 LB (SINGLE LINE) - HT50KX - PROP	53	22924	FIELD SERVICE LABEL KIT - HT50KX NON-PROP.
14	21940	WINCH SPACER (HT40KX ONLY)	54	22925	FIELD SERVICE LABEL KIT - HT50KX PROPORTIONAL
15	19177	HYDRAULIC ROTATION MOTOR	55	-	-
16	22501	HYDRAULIC VALVE ASSEMBLY - NON-PROP	56	-	-
17	22736	HYDRAULIC VALVE ASSEMBLY - PROP.	57	-	-
18	-	-	58	-	-
19	17770	HEADACHE BALL ASSEMBLY	59	-	-
20	21747 ▲	ELEV. CYL. 4.5" BORE x 2" ROD x 19.63" STROKE	60	-	-
21	22022-1	ELEV. C YL. 5" BORE x 2" ROD x 19.63" STROKE	61	-	-
22	19377-3	19377-1 ANTI-2-BLOCK WEIGHT ASSEMBLY	62	-	-
23	-	-	63	-	-
24	-	-	64	-	-
25	-	-	65	-	-
26	-	-	66	-	-
27	21420	BOOM ASSEMBLY - HT40/50KX	67	-	-
28	21410	BOOM ASSEMBLY - HT40/50KXX	68	-	-
29	-	-	69	-	-
30	22256	ELEVATION CYLINDER PIN - INBOARD	70	-	-
31	22257	ELEVATION CYLINDER PIN - OUTBOARD	71	-	-
32	-	-	72	-	-
33	-	-	73	-	-
34	-	-	74	-	-
35	-	-	75	-	-
36	-	-	76	-	-
37	-	-	77	-	-
38	-	-	78	-	-
39	-	-	79	-	-
40	17094-3/8-100	WIRE ROPE ASSEMBLY - 3/8" x 100 FT	80	-	-
		<div> <div></div> ITEM NOT SHOWN ON REPLACEMENT PARTS DRAWING </div> REPLACEMENT PARTS DWG REF 22914			

<div> <div></div> VENTURO </div> MANUFACTURING, INC. CINCINNATI, OHIO	TITLE		REPLACEMENT PARTS		SECTION
	HT40KX, HT50KX		DATE		C400
			3-24-09B		
			SUPERCEDES		22915
			7-21-08A		

21420 BOOM PARTS DRAWING (POWER / MANUAL)



REF PARTS LIST 22917

 MANUFACTURING, INC. CINCINNATI, OHIO	TITLE		DATE	SECTION
	21420 BOOM PARTS DRAWING		3-19-08A	C400
	HT40/50KX - HEX BOOM		SUPERSEDES	22916
			9-10-07	

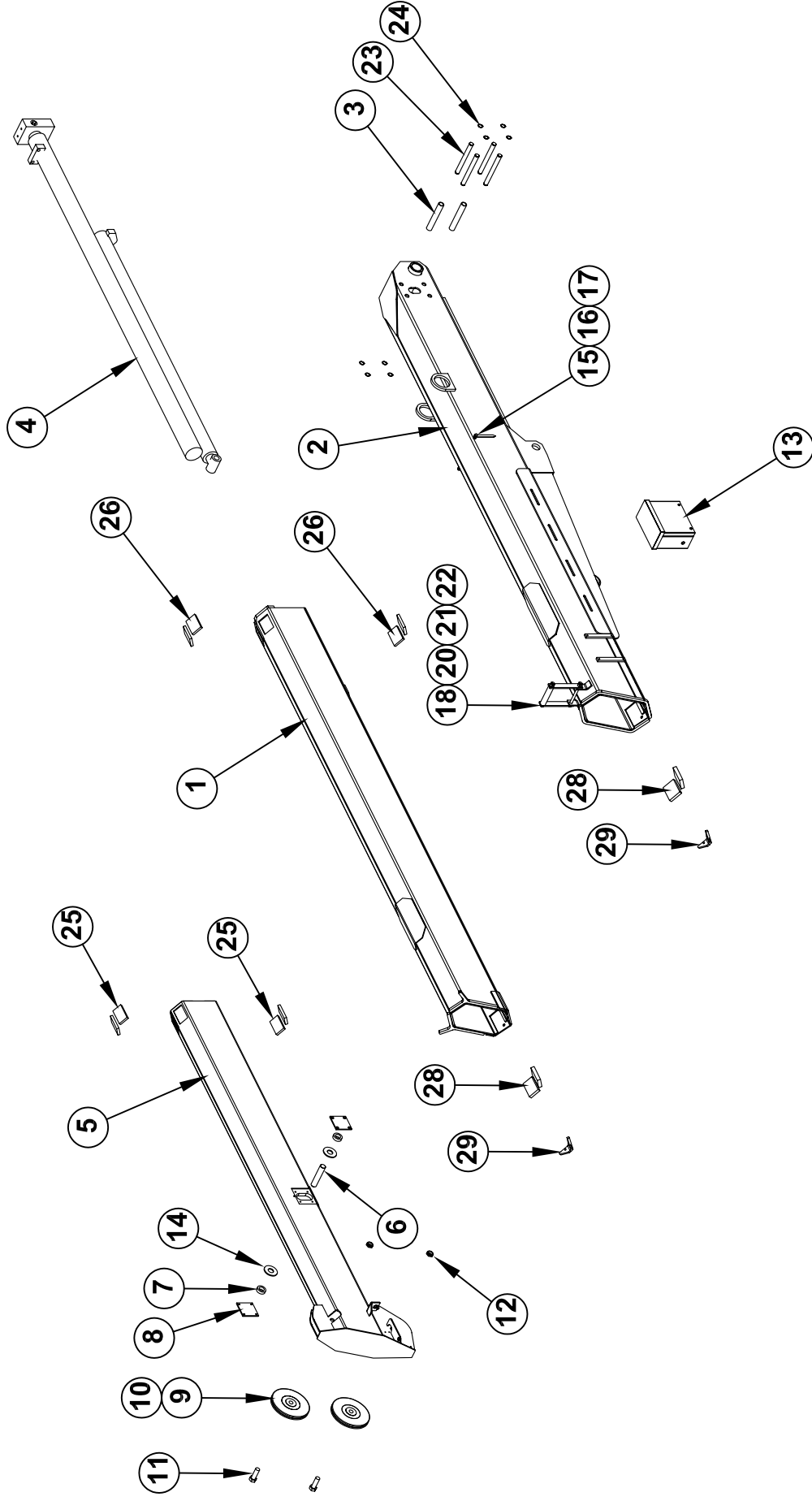
21420 BOOM PARTS LIST

26	1	14600	HITCH PIN ASSEMBLY
25	2	U063X2.50	UHMW 063X2.50
24	2	23183	V-BLOCK SLIDER
23	4	U044X2.13	UHMW 044X2.13
22	2	U050X2.13	UHMW 050X2.13
21	4	U044X1.88	UHMW 044X1.88
20	8	ISRNG-075	RETAINING RING - 3/4" SHAFT DIA.
19	4	22255	EXTENSION CYLINDER THRUST PIN
18	2	IANUT-02520S	ACORN NUT 1/4-20 STAINLESS
17	2	13459-2	BOOM ARROW 4-7/16 LONG
16	2	22490	SPACER, BOOM ARROW 1/2" O.D.
15	2	ILNUT-04414	NYLON INSERT LOCK NUT - 7/16-14
14	1	IHHCS04414550	HEX HEAD CAP SCREW - 7/16-14 X 5-1/2 LG
13	1	21560	ROLLER,UHMW GUIDE
12	1	21936	FLAT,MOUNT;WIRE ROPE GUIDE
11	1	21935	WIRE-ROPE GUIDE WELDED
10	1	22685	ANTI 2 BLOCK CORD REEL ASSEMBLY
9	2	ILNUT-07510	LOCKNUT 3/4-10
8	2	23929	SPACER - 23927 & 23928 POLY SHEAVES
7	2	23928	BOOM SHEAVE WITH BUSHING
6	2	17059-1	SHEAVE AXLE
5	2	24535	THRUST ROLLER
4	1	27207	PRIMARY BOOM WELDED ASSEMBLY
3	1	22032-H	EXTENSION CYLINDER
2	1	27214	TERTIARY BOOM ASSEMBLY
1	1	27212	SECONDARY BOOM TUBE WELDED ASSEMBLY
ITEM NO. QTY. PART NUMBER			DESCRIPTION


REF PARTS DRAWING 22916

 VENTURO [®] MANUFACTURING, INC. CINCINNATI, OHIO	TITLE REPLACEMENT PARTS LIST		SECTION C400
	HT40/50KX		DATE 10-27-09B SUPERSEDES 3-19-08A
			22917

21410 BOOM PARTS DRAWING (FULL POWER)



REF. PARTS LIST 22931

 MANUFACTURING, INC. CINCINNATI, OHIO	TITLE		DATE		SECTION	
	21410 BOOM PARTS DRAWING		6-3-08A		C400	
	HT40/50KXX BOOM		SUPERSEDES		22930	
			9-25-07			

MANUFACTURING, INC.
CINCINNATI, OHIO

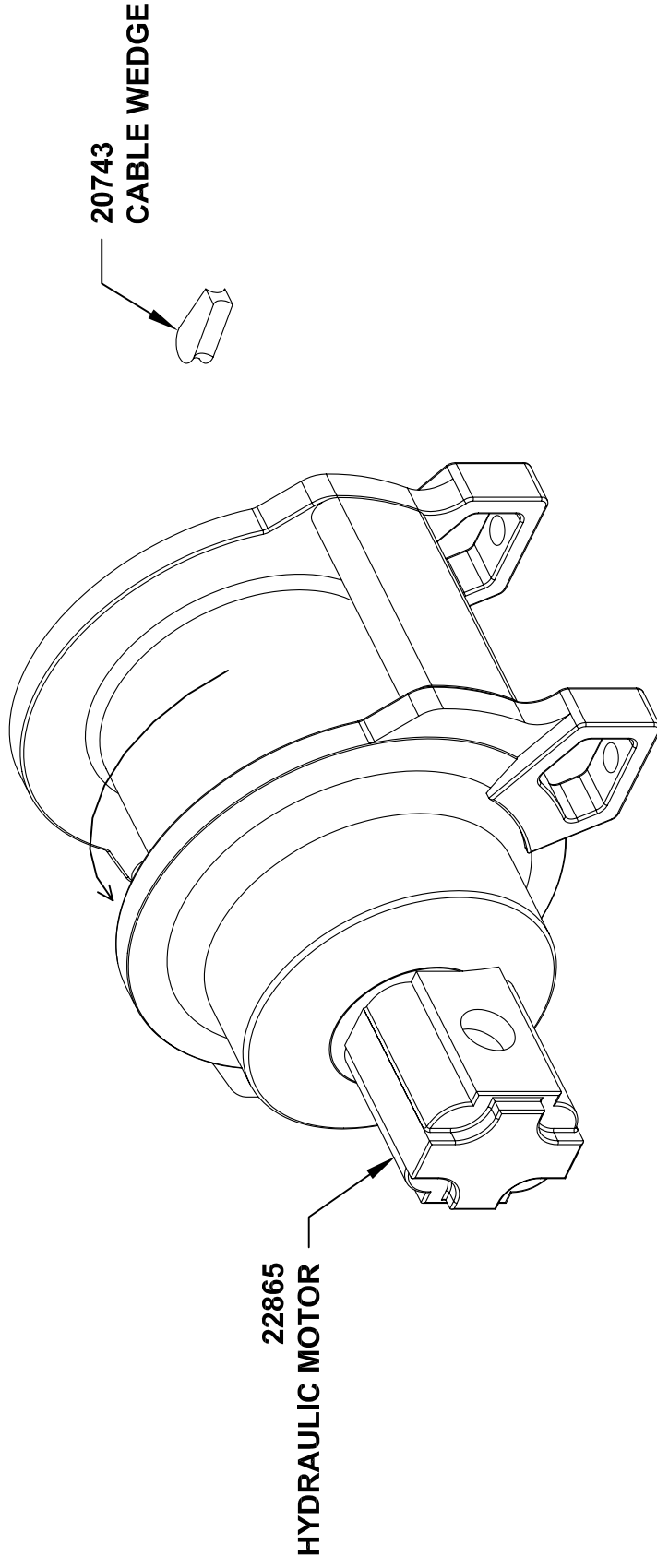
21410 BOOM PARTS LIST

29	2	23183	V-BLOCK SLIDER
28	2	U063X2.50	UHMW 063X2.50
27	2	U063X2.13	UHMW 063X2.13
26	4	U044X2.13	UHMW 044X2.13
25	4	U044X1.88	UHMW 044X1.88
24	8	ISRNG-075	RETAINING RING - 3/4" SHAFT DIA.
23	4	22255	EXTENSION CYLINDER THRUST PIN
22	2	ILNUT-04414	NYLON INSERT LOCK NUT - 7/16-14
21	1	21560	ROLLER,UHMW GUIDE
20	1	IHHCS04414550	HHCS - 7/16-14 X 5-1/2 LG
19	1	21936	FLAT,MOUNT;WIRE ROPE GUIDE
18	1	21935	WIRE-ROPE GUIDE WELDED
17	2	IANUT-02520S	ACORN NUT 1/4-20 STAINLESS
16	2	13459-2	BOOM ARROW 4-7/16 LONG
15	2	22490	SPACER; BOOM ARROW 1/2" O.D.
14	2	IFWSH-100	FLAT WASHER - 1"
13	1	22685	ANTI 2 BLOCK CORD REEL ASSEMBLY
12	2	IJNUT-07510N	NYLON LOCK-JAMNUT 3/4-10
11	2	17059-1	SHEAVE AXLE
10	2	23929	SPACER - 23927 & 23928 POLY SHEAVES
9	2	23928	BOOM SHEAVE WITH BUSHING
8	2	23116	PIN BLOCK REINFORCING
7	2	21428	BUSHING
6	1	21405	PIN - CYLINDER
5	1	21416	TERTIARY BOOM ASSEMBLY
4	1	21744	EXTENSION CYLINDER
3	2	24535	THRUST ROLLER
2	1	27207	PRIMARY BOOM WELDED ASSEMBLY
1	1	27209	SECONDARY BOOM WELDED ASSEMBLY
ITEM NO.	EXPLODED/QTY.	PART NUMBER	DESCRIPTION

REF PARTS DRAWING 22930

 VENTURO MANUFACTURING, INC. CINCINNATI, OHIO	TITLE	DATE	SECTION
	REPLACEMENT PARTS LIST HT40/50KXX	10-1-09B 6-3-08A	C400 22931

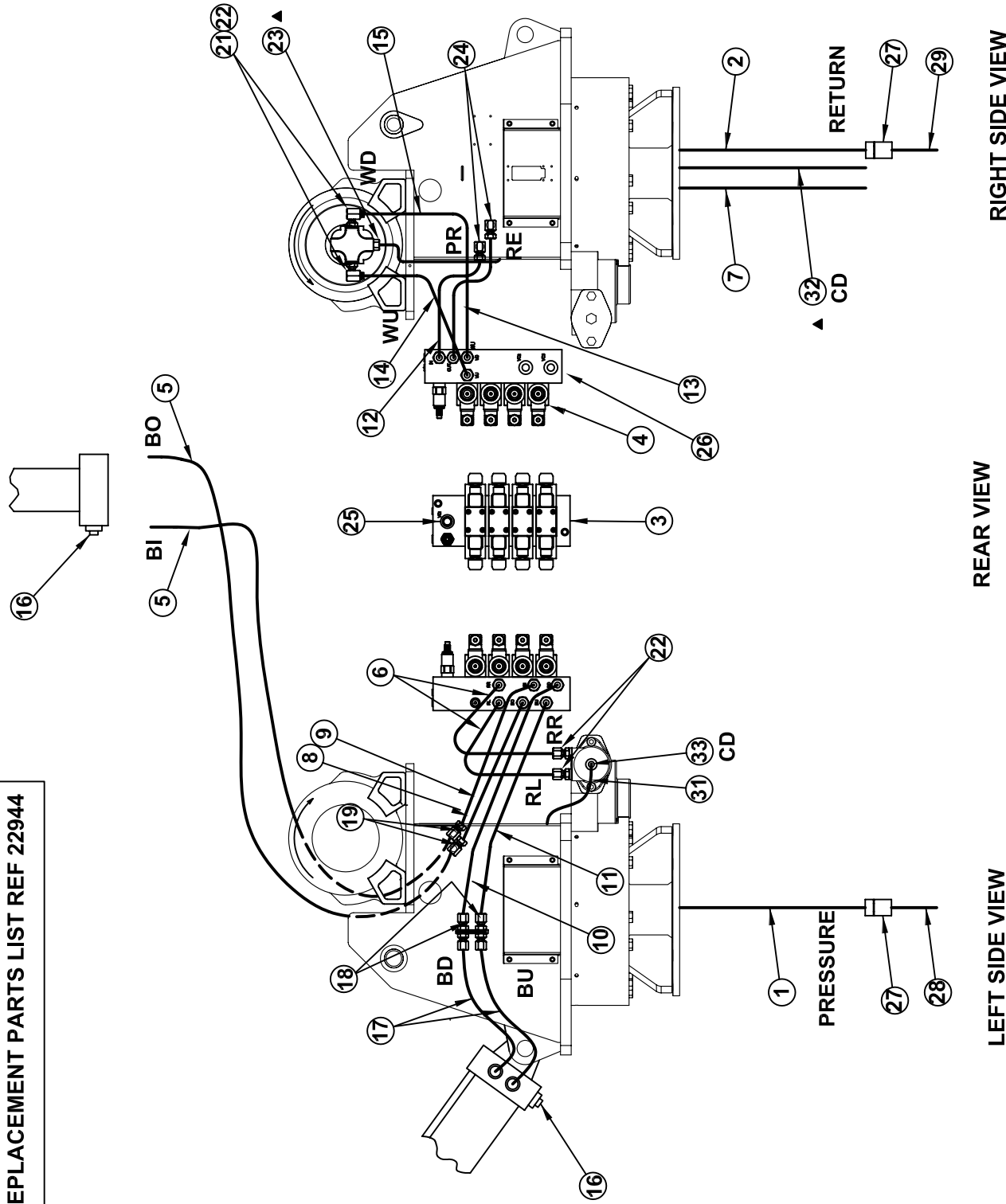
REPLACEMENT PARTS 22909 WINCH



WINCH SERVICE KIT P/N: 21133
MOTOR SERVICE KIT P/N 22902

 MANUFACTURING, INC. CINCINNATI, OHIO	TITLE		DATE	SECTION
	REPLACEMENT PARTS DRAWING		7-21-08A	-
	22909 WINCH - HT50KX NON-PROP		SUPERSEDES	22907

REPLACEMENT PARTS LIST REF 22944



RIGHT SIDE VIEW

REAR VIEW

LEFT SIDE VIEW

CD	CASE DRAIN
RR	ROTATION RIGHT
RL	ROTATION LEFT
BO	BOOM OUT
BI	BOOM IN
BU	BOOM UP
BD	BOOM DOWN
PR	PRESSURE
RE	RETURN
WU	WINCH UP
WD	WINCH DOWN

TITLE	REPLACEMENT PARTS DRAWING	DATE	12-16-08B	SECTION	C400
	HT40/50KX NON-PROP HYD. COMPONENTS	SUPERSEDES	7-21-08A		22943

HYDRAULIC SYSTEM COMPONENTS - HT40/50KX NON-PROP CRANES REPLACEMENT PARTS LIST

ITEM	PART NUMBER	DESCRIPTION
1	22820	PRESSURE HOSE
2	22821	RETURN HOSE
3	22501	VALVE BANK - HT40KX, HT50KX
4	22523	VALVE ASSEMBLY (VALVE BLOCK, VALVE, COIL, & HARDWARE)
	22362	COIL ONLY
5	22363	EXTENSION CYLINDER HOSE
6	22811	HYD TUBING - ROTATION
7	22903	HOSE - CASE DRAIN
8	22812	HYD TUBING - BOOM OUT
9	22813	HYD TUBING - BOOM IN
10	22815	HYD TUBING - BOOM DOWN
11	22814	HYD TUBING - BOOM UP
12	22853	HOUSING PRESSURE HOSE
13	22854	HOUSING RETURN HOSE
14	22837	HOSE - WINCH UP
15	22838	HOSE - WINCH DOWN
16	20893	COMMAND AND CONTROL VALVE (ELEVATION & EXTENSION CYLINDERS)
17	22382	ELEV CYLINDER HOSE - 22" x 6MBX x 6FJX
18	H2700LN-0606	HYD BULKHEAD 6MJ-6MJ
19	▲H6500-0606	HYD ELBOW FITTING 6MJ-6FX-90 DEG.
20	-	-
21	H6801-0608	HYD ELBOW 8MO-6MJ X 90°
22	H6410-1608	REDUCER - EXPANDER 16MO-8FO
23	H6801-0404	HYD ELBOW 4MJ-4MO X 90°
24	H2701LN-0808	HYD BULKHEAD UNION ELBOW WITH LOCK NUT - 8MJ X 90°
25	22503	MASTER BYPASS VALVE AND COIL
26	22312-X.XX	PRIORITY FLOW CART (X.XX REFER TO CHART BELOW)
27	20684	LIVE CONTINUOUS HYDRAULIC SWIVEL
28	20687	PRESSURE HOSE - COMPARTMENT SIDE
29	20688	RETURN HOSE - COMPARTMENT SIDE
30	H6500-0606	HYD ELBOW FITTING 6MJ-6FX-90
31	▲ 22952	CASE DRAIN HOSE - 13" LONG
32	▲ 22953	CASE DRAIN HOSE - 30" LONG
33	▲ H6801-0404	HYD ELBOW 4MJ-4MO
34	▲ H2603-040404	HYD TEE - 4MJ-4MJ-4MJ

REPLACEMENT PARTS DWG REF 22943

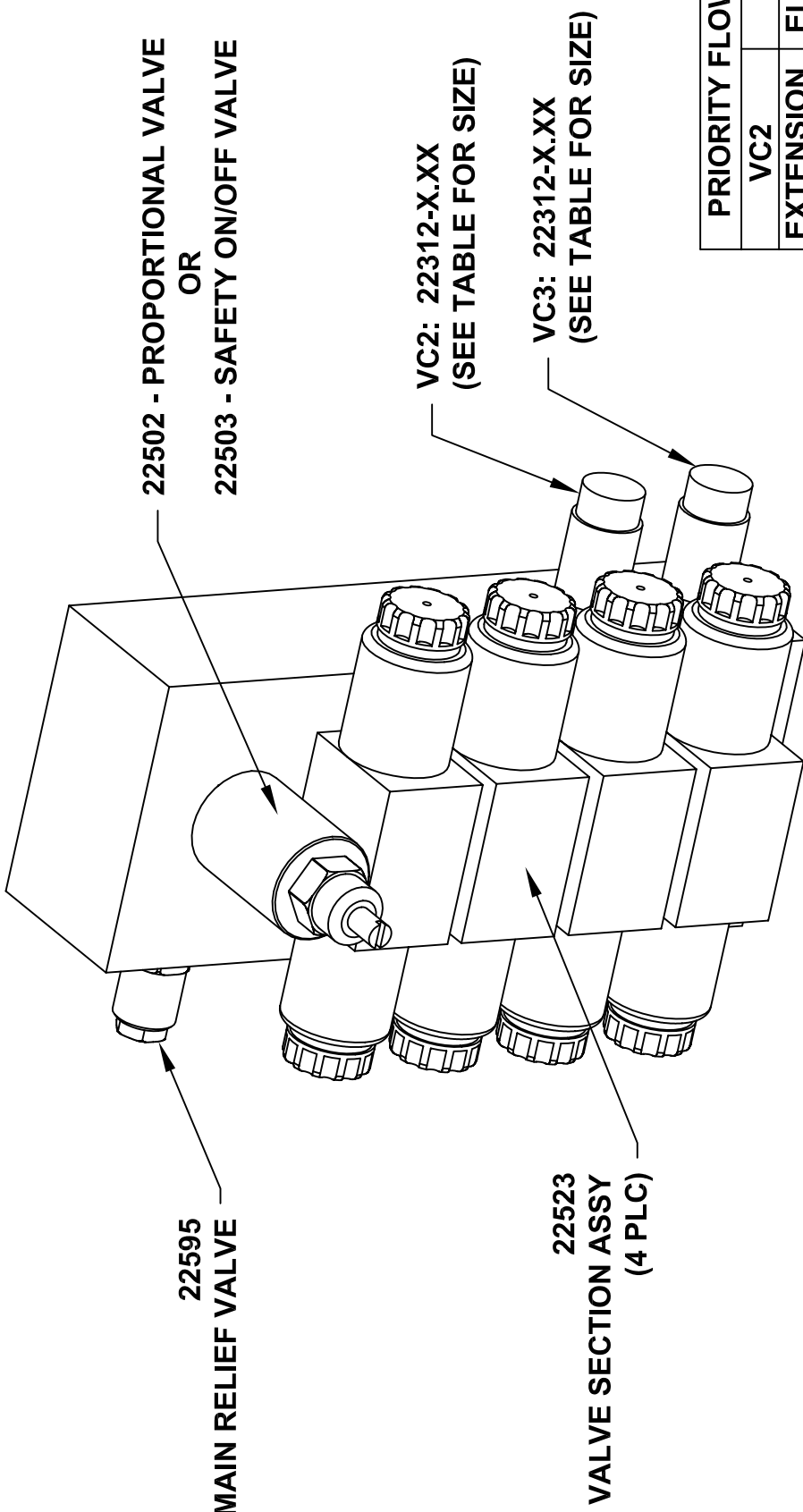
HT40	EXTENSION	1.25
	ELEVATION	1.75
HT50	EXTENSION	1.25
	ELEVATION	2.25



MFG., INC.
CINCINNATI, OHIO

TITLE	DATE	SECTION
REPL. PARTS LIST	12-16-08C	C400
HT40/50KX - NON-PROP.	SUPERCEDES 11-4-08B	22944

22501 HYDRAULIC VALVE MANIFOLD REPLACEMENT PARTS



	PRIORITY FLOW VALVE	
	VC2	VC3
	EXTENSION	ELEVATION
HT25/30 NON-PROP	1.00	1.00
HT25/30 PROP	2.25	2.25
HT40 NON-PROP	1.25	1.75
HT50 NON-PROP	1.25	2.25



MANUFACTURING, INC.
CINCINNATI, OHIO

TITLE

22501 REPLACEMENT PARTS

DATE

9-17-09

SECTION

-

HT25/30/40/50

SUPERSEDES

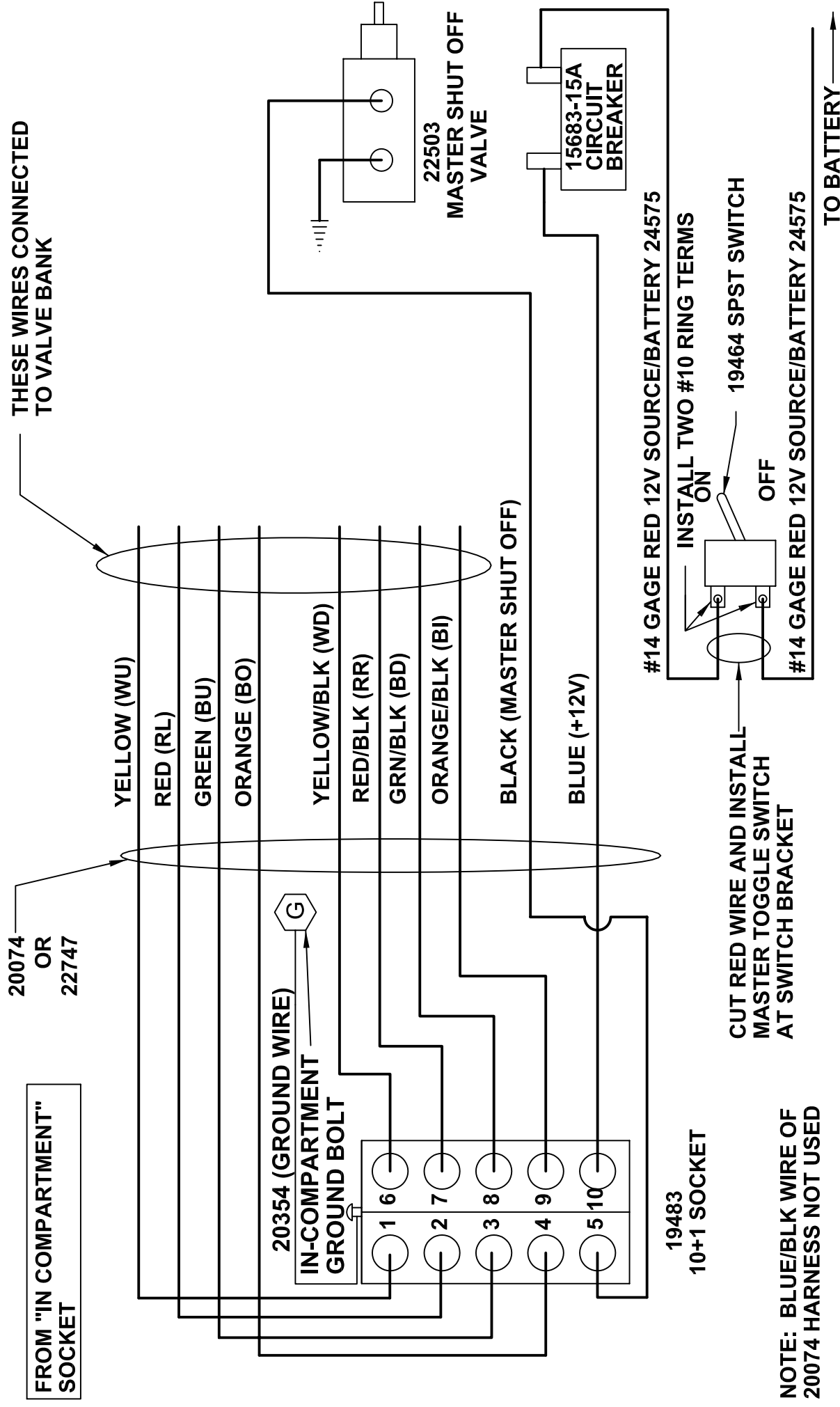
-

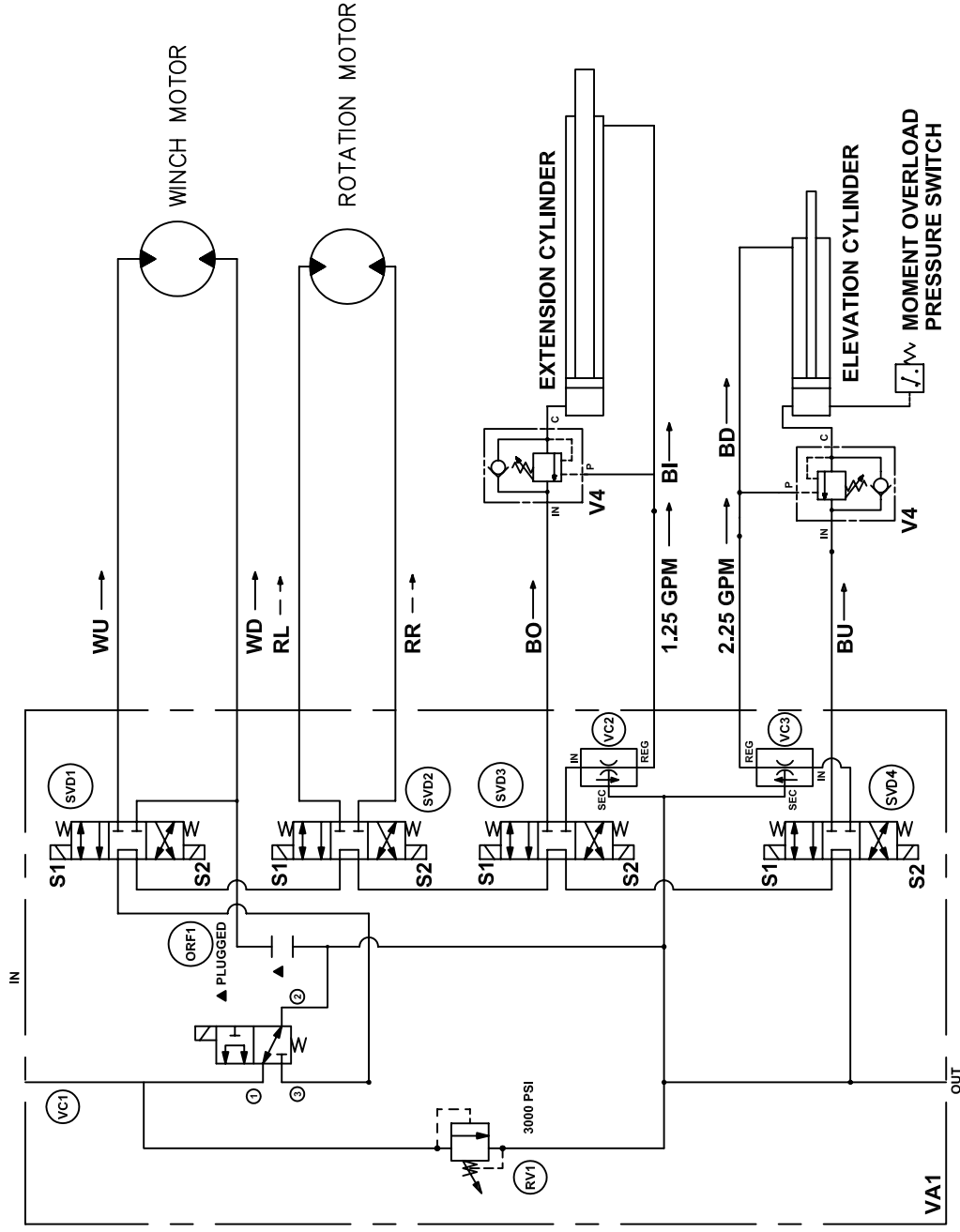
22939



22180

NON-PROPORTIONAL CONTROL SOCKET WIRING

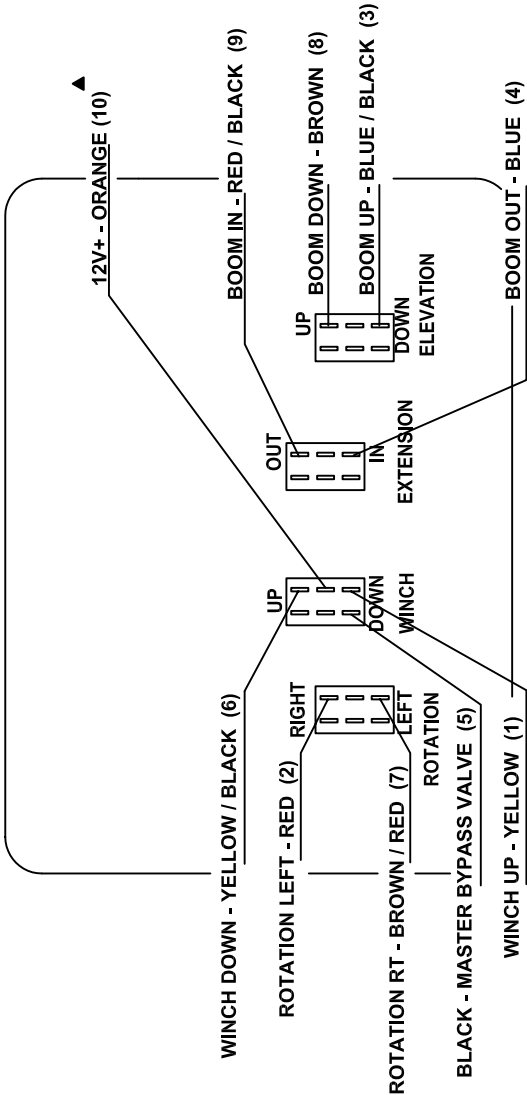




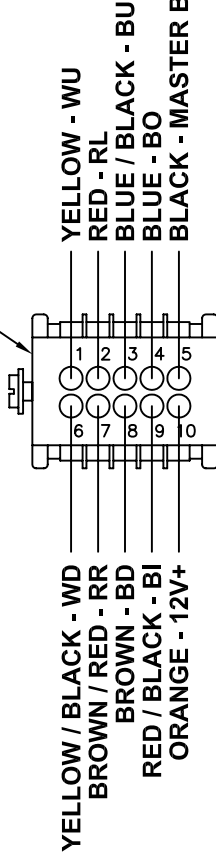
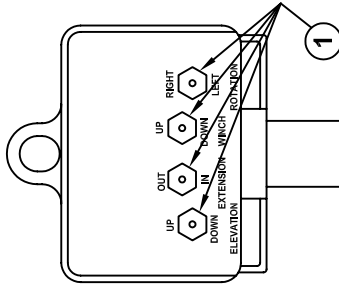
- VA1 CONTROL VALVE ASSY
 RV1 INLET RELIEF VALVE (3000 PSI)
 SVD1 3 POSITION-4 WAY VALVE
 SVD2 3 POSITION-4 WAY VALVE
 SVD3 3 POSITION-4 WAY VALVE
 SVD4 3 POSITION-4 WAY VALVE
 V4 COUNTERBALANCE CARTRIDGE VALVE
 VC1 PROPORTIONAL CONTROL VALVE (SIMPLIFIED REP)
 VC2 PRIORITY FLOW REGULATOR VALVE
 VC3 PRIORITY FLOW REGULATOR VALVE

CORD REPLACEMENT INSTRUCTIONS

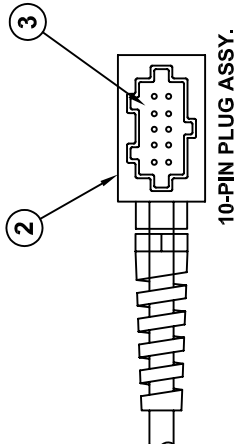
(INSIDE VIEW OF PENDANT CONTROL W/ REAR COVER REMOVED)



- NOTE 1)
WIRE TERMINALS TO BE INSTALLED 'AFTER'
ROUTING REPLACEMENT CORD ASSY THROUGH
PENDANT HEAD AND PLUG HOUSING.
- NOTE 2)
TOGGLE SWITCH JUMPER WIRES
NOT SHOWN FOR CLARITY.
- NOTE 3)
STOW OR CUT-BACK UNUSED WIRES.

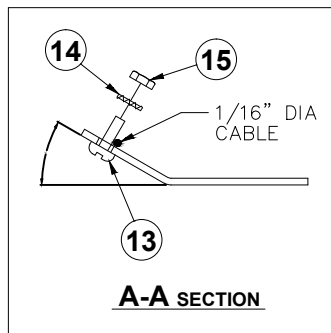
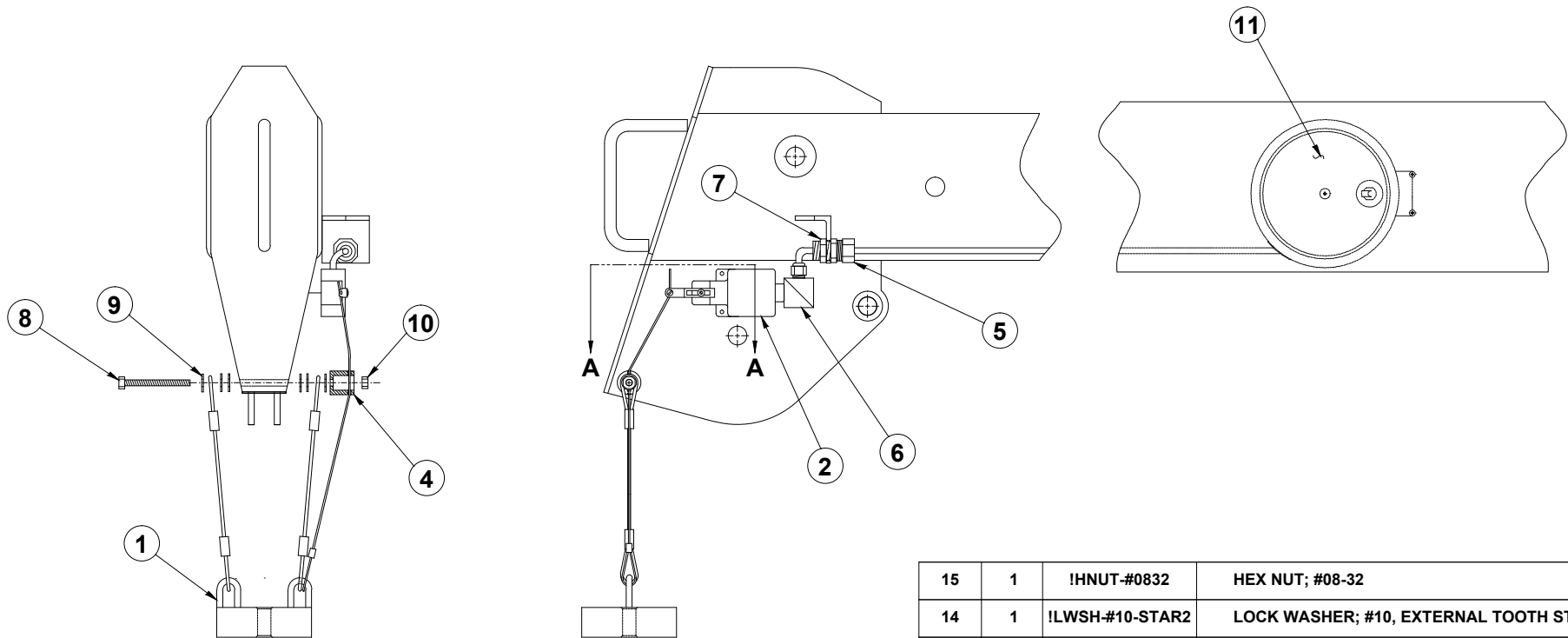


PLUG - BACKSIDE VIEW



ITEM	QTY	PART NO.	DESCRIPTION
4	1	22135	CORD ASSY. KIT
3	1	19427	MALE INSERT - 10 + 1 POLE
2	1	19426	PLUG CASE - 10 + 1 POLE
1	4	22152	DPDT MOMENTARY SWITCH

 MANUFACTURING, INC. CINCINNATI, OHIO	TITLE REPLACEMENT PARTS DRAWING	DATE 10-6-11C	SECTION C400
	22062 PENDANT (STANDARD CTRL)	SUPERSEDES 8-15-11B	22078



NOTE: PARTS SEE 22450 (NO DASH) KIT

15	1	!HNUT-#0832	HEX NUT; #08-32
14	1	!LWSH-#10-STAR2	LOCK WASHER; #10, EXTERNAL TOOTH STAR
13	1	!PHCS#0832038	PAN HEAD CAP SCREW; #08-32 x 3/8"
12	-	-	-
11	1	26577-1-20	CORD REEL ASSY - LEFT HAND (STANDARD)
10	1	!LNUT-02520	LOCK NUT; 1/4-20, NYLON INSERT
9	6	!FWSH-025	FLAT WASHER; 1/4"
8	1	!HHCS02520275-5	HEX HEAD CAP SCREW; 1/4-20 x 2 3/4", GR. 5
7	1	PL-20-469	LOCKNUT; 1/2" - CONDUIT
6	1	19060	STRAIN RELIEF 90°
5	1	22455	STRAIGHT STRAIN RELIEF (1/2" PIPE)
4	1	22454	DELTRIN BLACK CABLE GUIDE - A2B
3	-	-	-
2	1	22453	MICROSWITCH
1	1	19377-3	WEIGHT ASSY
ITEM	QTY	PART NO.	DESCRIPTION



VENCO VENTURO INDUSTRIES LLC
CINCINNATI, OHIO

TITLE
REPL PARTS DWG - LH CORD REEL

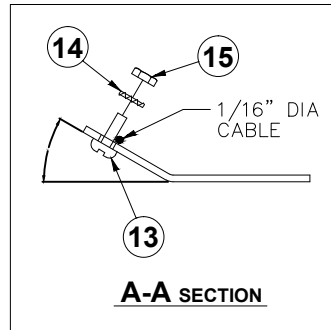
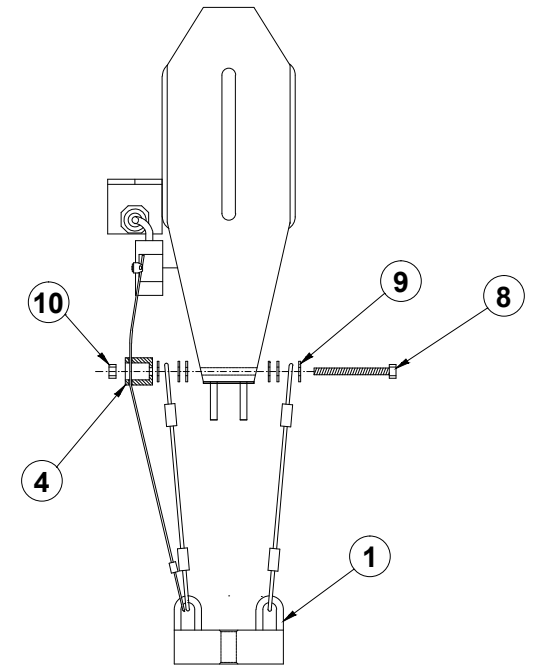
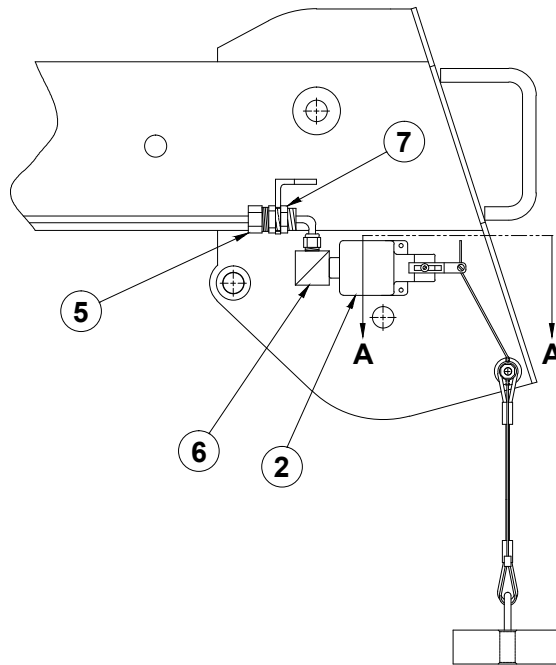
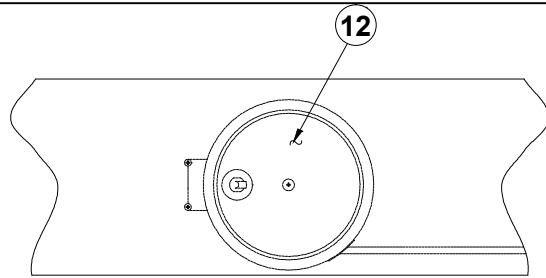
HT40/50 GEN C & PRIOR

DATE
03-26-25A

SUPERSEDES
09-11-07

SECTION
C400

22918



NOTE: PARTS SEE 22450-RH KIT

15	1	!HNUT-#0832	HEX NUT; #08-32
14	1	!LWSH-#10-STAR2	LOCK WASHER; #10, EXTERNAL TOOTH STAR
13	1	!PHCS#0832038	PAN HEAD CAP SCREW; #08-32 x 3/8"
12	1	26577-2-20	CORD REEL & BRACKET ASSY - RIGHT HAND
11	-	-	-
10	1	!LNUT-02520	LOCK NUT; 1/4-20, NYLON INSERT
9	6	!FWSH-025	FLAT WASHER; 1/4"
8	1	!HHCS02520275-5	HEX HEAD CAP SCREW; 1/4-20 x 2 3/4", GR. 5
7	1	PL-20-469	LOCKNUT; 1/2" - CONDUIT
6	1	19060	STRAIN RELIEF 90°
5	1	22455	STRAIGHT STRAIN RELIEF (1/2" PIPE)
4	1	22454	DELTRIN BLACK CABLE GUIDE - A2B
3	-	-	-
2	1	22453	MICROSWITCH
1	1	19377-3	WEIGHT ASSY
ITEM	QTY	PART NO.	DESCRIPTION

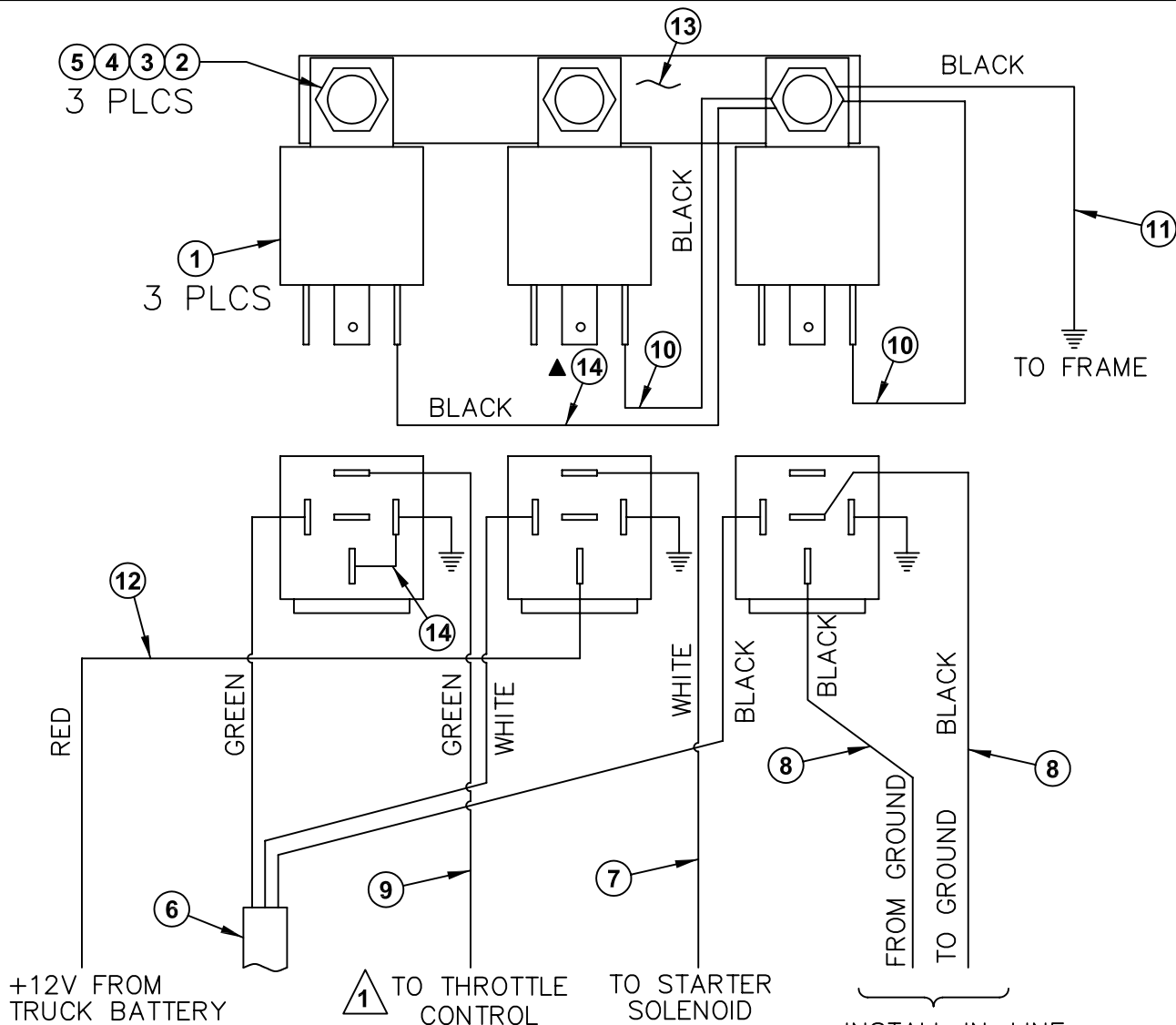


VENCO VENTURO INDUSTRIES LLC
CINCINNATI, OHIO

TITLE
REPL PARTS DWG - RH CORD REEL

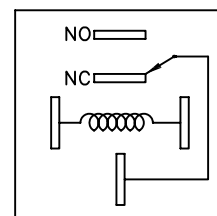
HT40/50 GEN C & PRIOR

DATE 03-26-25A	SECTION C400
SUPERSEDES 09-11-07	22919



1
NOTE:
THROTTLE CONTROL IS DESIGNED
TO PROVIDE A GROUND SIGNAL
WHEN SWITCH IS ACTIVATED

INSTALL IN-LINE
WITH IGNITION COIL
(GAS) OR
FUEL SOLENOID
(DIESEL).



RELAY
SCHEMATIC

ITEM	QTY	PART#	DESCRIPTION
1	3	22739 ▲	RELAY
2	3	!PHCS#1024075	#10-24 X 3/4 PHIL PAN HD BOLT
3	3	!LWSH-#10	#10 LOCKWASHER
4	3	!FWSH-025	#10 WASHER
5	3	!HNUT-#1024	#10 NUT
6	1	22607	WIRE HARNESS - 12/3 SJO
7	1	22609	WHITE - 16 GAGE ELECTRICAL WIRE - 15 FEET LONG
8	2	22610	BLACK - 16 GAGE ELECTRICAL WIRE - 15 FEET LONG
9	1	22611	GREEN - 16 GAGE ELECTRICAL WIRE - 15 FEET LONG
10	2	22612	BLACK - 16 GAGE ELECTRICAL WIRE - 6 INCHES LONG
11	1	22613	BLACK - 16 GAGE ELECTRICAL WIRE - 8 FEET LONG
12	1	22614	RED - 14 GAGE ELECTRICAL WIRE - 15 FEET LONG
13	1	01181	BUSS BAR
14	1	22619	BLACK - 16GA WIRE ASSY - 6" LONG W/ 3 INCH PIGTAIL



MFG., INC.
CINCINNATI, OHIO

TITLE **ENGINE START/STOP
THROTTLE CONTROL**

▲ HT18/25/40/50

DATE **5-26-05D**

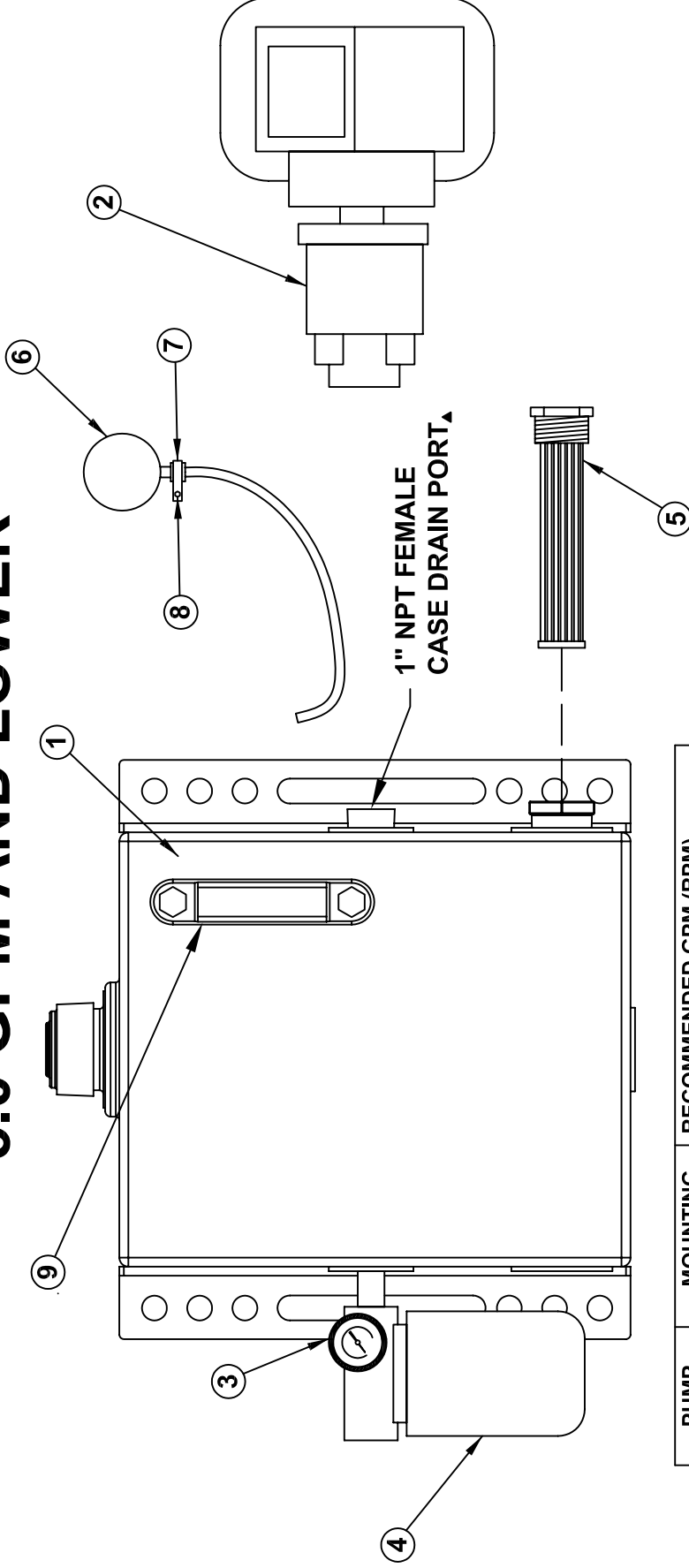
SUPERSEDES
2-2-05C

SECTION
C400

22615

19294 PTO PACKAGES

5.0 GPM AND LOWER

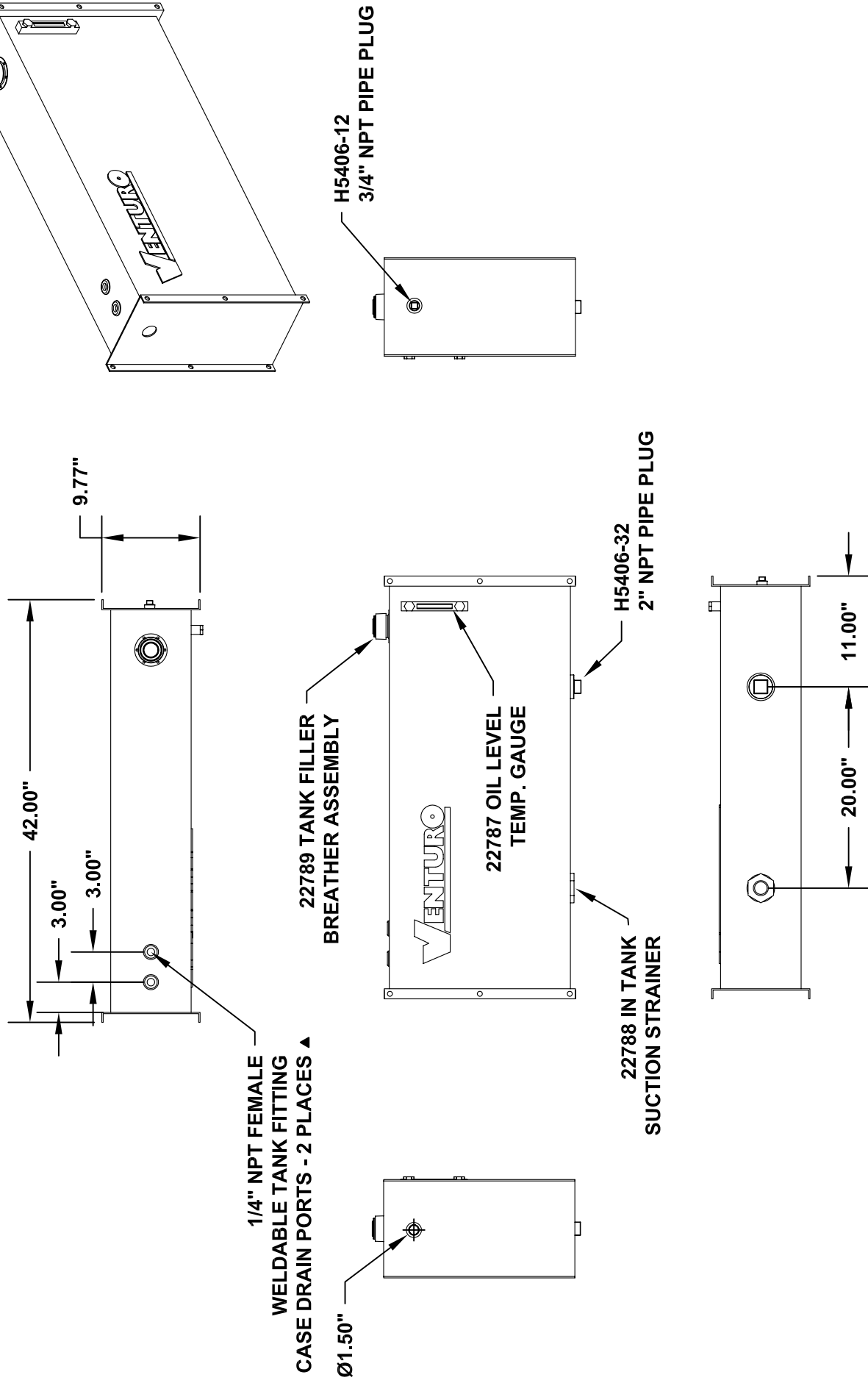


PUMP	MOUNTING	RECOMMENDED GPM (RPM)
19296-1.60	SAE "A" 9 TOOTH SPLINED SHAFT	HT18 - STD. - 1.75 GPM (1110 RPM)
19296-2.64		HT25 - STD. - 2.00 GPM (1250 RPM)
19296-4.00		HT40 - STD. - 2.6 GPM (1000 RPM)
		HT50 - STD. - 3.0 GPM (1150 RPM)
		HT18 - PROP. - 3.5 GPM (875 RPM)
		HT25 - PROP. - 4.0 GPM (1000 RPM)

9	1	22184	SIGHT GLASS
8	1	!HWHS02520075-F	HEX WASHER HEAD 1/4-20 X 3/4 SELF TAPPING CLAMP
7	1	19275	
6	1	192730	PRESSURE GAUGE ASSEMBLY
5	1	19300	SUCTION SCREEN - 100 MESH
4	1	19298	FILTER ASSY, RETURN - 10 MICRON
3	1	19297	PRESSURE GAUGE - RETURN
2	1	SEE CHART	PTO PUMP - HT18/25/40/50KX
1	1	19295	RESERVOIR TANK - 10 GALLON
ITEM	QTY	PART NO.	DESCRIPTION

 MANUFACTURING, INC. CINCINNATI, OHIO	TITLE		DATE	SECTION
	REPLACEMENT PARTS DWG		11-5-08B	C400
	PTO KIT - HT18/25/40/50KX		SUPERSEDES 6-28-05A	22744

22785 BULKHEAD MOUNT OIL RESERVOIR



<div><div>MANUFACTURING, INC. CINCINNATI, OHIO</div></div>	TITLE 25 GALLON HYDRAULIC TANK		DATE 11-5-08B	SECTION -
	-		SUPERSEDES 3-20-08A	22825

HT40KX - NON-PROPORTIONAL 22925 FIELD SERVICE LABEL KIT

ITEM	PART NUMBER	QTY	DESCRIPTION
1	15581	1	ATTACHMENT DECAL
2	15398	1	UNPLUG PENDANT DECAL
3	19314-1	1	VALVE BANK DECAL - LEFT
4	19314-2	1	VALVE BANK DECAL - RIGHT
5	14473-1	1	OIL DECAL
6	14473-2	4	GREASE DECAL
7	17389	2	VENTURO DECAL (MEDIUM)
8	15401	1	UNLAWFUL TO OPERATE DECAL
9	22352-1	1	HT50KX BOOM CAPACITY DECAL (RIGHT)
10	22352-2	1	HT50KX BOOM CAPACITY DECAL (LEFT)
11	19746	2	HT40KX DECAL
12	15392	1	DANGER ELECTROCUTION HAZARD DECAL
13	15391	1	CRANE NOT PASSENGER LIFT DECAL
14	19315-1	1	SAFETY SHUT OFF HYDRAULIC BANK DECAL
15	15390	1	CAUTION, INSTRUCTIONS DECAL
16	22499	1	KNOW YOUR SIGNALS DECAL
17	22489	1	DECAL PLACEMENT DRAWING
18	20834	1	MANUAL OVERRIDE INSTRUCTION LOCATION DECAL
19	-	-	-
20	-	-	-
21	-	-	-
22	-	-	-
23	-	-	-
24	-	-	-
25	-	-	-
26	-	-	-
27	-	-	-
28	-	-	-
29	-	-	-
30	-	-	-
31	-	-	-
32	-	-	-
33	-	-	-
34	-	-	-
35	-	-	-



MFG., INC.
CINCINNATI, OHIO

TITLE	DATE	SECTION
FIELD SERV. LABEL KIT	11-4-08	-
HT40KX - NON-PROP.	SUPERCEDES	22926
	-	



LIMITED WARRANTY POLICY

This limited policy warrants new products of Venturo be free from defects in material and workmanship for a period of one (1) year from date of original installation. This warranty covers:

- ◆ ***Repair or replacement of product***
- ◆ ***Labor to repair or replace product***
- ◆ ***Freight to return and/or replace product***

We shall not be liable for any contingent liabilities arising out of the improper function of any products. Warranty shall become void if the product is improperly installed, modified, damaged, abused or used for application other than intended use.

WARRANTY CLAIMS

Venturo Manufacturing, Inc. will make a good faith effort for prompt correction or other adjustment with respect to any product, which proves to be defective after our inspection and within the warranty period. Before any repairs are attempted or before returning any product, your Venturo Distributor is required to obtain a warranty claim number. This number is necessary for any claim to be considered. To obtain a warranty claim number, Venturo requires the model and serial number. Only authorized Venturo Distributors can perform warranty. For the name and address of your local Venturo Distributor call the **Warranty Claim Department – 513-772-8448**.

WARNING – It is the responsibility of the installer to insure the installation is completed according to the manufacturer's recommendations, insure the ultimate user understands how to operate product in a safe manner and understands the need for regular service and maintenance by an authorized Venturo Distributor. No modifications or alterations may be made to any Venturo products without the expressed written consent of the manufacturer. Reinstallation of any Venturo product must be done by an authorized Venturo Distributor, to the standards of the industry including maintenance, service and affixing of all instruction, safety and warning decals. Users should again be instructed as to the safe operation at time of delivery. Maintenance, service, operation and safety warning decals are available on request from Venturo Manufacturing, Inc.

VENTURO MANUFACTURING, INC

DIVISION OF COLLINS ASSOCIATES, INC
12110 BEST PLACE • CINCINNATI, OHIO 45241
513.772.8448
www.venturo.com