



INST-23033

*EM\*AAA-\*\**

# PARTS & INSTALLATION MANUAL

---

## ET30KX

---

Included in this manual:

### ET30KX

- 5,000 lbs Electric Telescopic Service Crane
- 10-16 ft Powered w/ 16-20 ft Manual, Single-Stage Boom Extension
- 10-20 ft Powered, Dual-Stage Boom Extension

VENCO VENTURO INDUSTRIES LLC  
12110 BEST PLACE | CINCINNATI, OHIO 45241  
800-226-2238



This manual also available online at [www.venturo.com](http://www.venturo.com).



# ET30KX

INST-23033 - 7/1/2025 (Rev: NEW0)

|          |  |
|----------|--|
| 7607100A | DESCRIPTION & SPECIFICATIONS   |
| 21851a   | SPECIFICATIONS & OPERATING FEATURES                                  |
| 21851b   | SPECIFICATIONS & OPERATING FEATURES                                  |
| 21092    | INSTALLATION DIMENSIONS; ET30KX                                      |
| 21080    | MOUNTING DIMENSIONS; BASE PLATE                                      |
| 21091    | CAPACITY CHART; ET30KX W/ 10-16-20 FT. BOOM                          |
| 7607150A | SAFETY   |
| 850711   | SAFETY & HAZARDS - GENERAL   |
| 15394    | VEHICLE & CRANE ELECTRICAL HAZARD INFORMATION                        |
| 21353    | SAFETY DECALS  |
| 21384    | SAFETY DECALS  |
| 21354    | DECALS FOR ET CRANES   |
| 21853    | MODEL & CAPACITY DECALS - ET30KX                                     |
| 7607200A | INSTALLATION   |
| 711105   | CABLE & BATTERY REQUIREMENTS - ET & HT CRANES                        |
| 15660    | BATTERY CABLE INSTALLATION DRAWING                                   |
| 20906-30 | STABILITY TESTING  |
| 20907    | CRANE STABILITY  |
| 22245    | WIRE ROPE INSTALLATION   |
| 7607300A | MAINTENANCE & SERVICE  |
| 21878    | LUBRICATION & MAINTENANCE CHART                                      |
| 19963    | MINIMUM VOLTAGE TEST   |
| 23228    | WIRE ROPE AND LOAD BLOCK SPECIFICATIONS                              |
| 23084    | MANUAL OVERRIDE INSTRUCTIONS - ET NON-PROPORTIONAL                   |
| 7607400A | REPLACEMENT PARTS  |
| 21854    | REPLACEMENT PARTS DRAWING; ET30KX MECH                               |
| 21855    | REPLACEMENT PARTS LIST; ET30KX MECH                                  |
| 21198    | REPLACEMENT PARTS DWG; 27198 BOOM (SINGLE-STAGE)                     |
| 21199    | REPLACEMENT PARTS LIST; 27198 BOOM (SINGLE-STAGE)                    |
| 21088    | REPLACEMENT PARTS DWG; 27197 BOOM (DUAL-STAGE)                       |
| 21089    | REPLACEMENT PARTS LIST; 27197 BOOM (DUAL-STAGE)                      |
| 23026    | A2B REPLACEMENT PARTS DRAWING AND LIST                               |
| 27029    | A2B WIRING AND ADJUSTMENT  |
| 21776    | REPLACEMENT PARTS DRAWING; 23154-2 ELECTRICAL COMPONENT              |
| 21859    | WIRING DIAGRAM   |
| 21292    | REPLACEMENT PARTS LIST; 16780 SINGLE / 2-POLE SLIP RING              |
| 21293    | REPLACEMENT PARTS DRAWING; 16780 SINGLE / 2-POLE SLIP RING           |
| 23075    | 21990 PENDANT; REPLACEMENT PARTS DRAWING / LIST (4 FUNC ESTP/HORN)   |
| 21758    | REPLACEMENT PARTS DRAWING; HYDRAULIC SYSTEM COMPONENTS (NON-PROP)    |
| 20156    | HYDRAULIC SYSTEM SCHEMATIC (NON-PROPORTIONAL)                        |
| 21879    | REPLACEMENT PARTS DWG; 20061 SINGLE-STAGE EXT. CYL. W/ SEAL KIT INFO |
| 21860    | REPLACEMENT PARTS DWG; 21753 DUAL-STAGE EXT. CYL. W/ SEAL KIT INFO   |
| 21773    | REPLACEMENT PARTS DRAWING; 21752 ELEVATION CYLINDER W/ SEAL KIT INFO |
| 21053    | REPLACEMENT PARTS DRAWING; 19813 WINCH                               |
| 21886    | REPLACEMENT PARTS DRAWING; 21418 SLEWING RING                        |
| 21894    | DECAL PLACEMENT  |
| 21899    | FIELD SERVICE LABEL KIT; (ET25/30/36KX)                              |

12-00073\_VNT1 WARRANTY PAGE

# **SECTION 100**

## **DESCRIPTION**

### **&**

## **SPECIFICATIONS**



VENCO VENTURO INDUSTRIES LLC  
CINCINNATI, OHIO

## SPECIFICATIONS AND OPERATING FEATURES

ET30KX-10/20

### SPECIFICATIONS

12 VOLT BATTERY OPERATED

30,000 FT-LBS OVERTURNING MOMENT (Or as limited by truck stability)

MOMENT OVERLOAD SYSTEM

|                     |                               |
|---------------------|-------------------------------|
| TELESCOPIC BOOM     | 10 / 20                       |
| BOOM HYD ELEVATION  | -8° TO 75°                    |
| BOOM HYD EXT        | 10 - 16 FT                    |
| BOOM MANUAL EXT     | 4 FT                          |
| CAPACITY            | 1500 LBS @<br>20 FT REACH     |
|                     | 5000 LBS @<br>3 TO 5 FT REACH |
| WIRE ROPE           | 5/16" DIA x 80 FT             |
| PENDANT CORD LENGTH | 25 FT                         |

▲

WINCH - 2500 LBS SINGLE LINE CAPACITY  
With Automatic Load Brake

ELECTRIC HYDRAULIC BOOM ELEVATION

ELECTRIC HYDRAULIC BOOM EXTENSION & RETRACTION - 6 FT STROKE

360° CONTINUOUS

REMOTE CONTROL PENDANT

25 ft Straight Cord with Four Environmentally Sealed Toggle Switches Protected by a Guard

MASTER DISCONNECT SWITCH

OUTRIGGERS AVAILABLE

Side Bracket Type Outriggers

Fold Away Type Outriggers

Pullout Type Outrigger System



MFG., INC.  
CINCINNATI, OHIO

TITLE  
**INSTALLATION DWG**

**ET30KX-10/20**

DATE  
**8-7-09A**

SUPERCEDES  
**9-19-08**

SECTION  
**C120**

**21851a**

## **OVERLOAD SENSING SYSTEM**

This crane is equipped with an Overload Sensing System. If the capacity of the crane is exceeded, the "Winch Up", "Boom Down", and "Boom Out" functions will be shut down. The "Winch Down", "Boom Up", and "Boom In" functions will continue to operate and can be used to relieve the overload condition. The "Rotation" function also will continue to operate.

## **CONTROL PRIORITY SYSTEM**

The design intent of the electrical and hydraulic system is such that some functions can be operated simultaneously, while others are meant to be operated individually. To summarize the control system see the explanations below.

- Winch up takes priority over all functions.
- Winch Down can be operated with any other single function.
- Hydraulic functions (Rotation Right, Rotation Left, Boom Up, Boom Down, Boom Out and Boom In) are designed to function one at a time.

## **CABLE DRUM AND SHEAVE DIAMETERS**

The drum on the ET30KX is 5-5/16" in diameter which provides the first layer wire rope pitch diameter 18 times the rope diameter as required by ANSI B30.5 Cranes Standards. The cable sheaves are either 16 (snatch block) or 18 (boom) times the cable diameter which likewise conforms. ▲ ▲

## **MISCELLANEOUS**

### **A. CAPACITY INDICATOR**

Select boom reach and angle allowable for load by using capacity indicator arrow and chart on either side of boom.

### **B. BATTERY HOOKUP**

A parallel auxiliary battery should be installed near the crane as shown on Dwg. 19947 under "RECOMMENDED INSTALLATION". The parallel auxiliary battery minimum rating should be 450 Cold Cranking Amps (at 0° F) and 100 reserve capacity, or 78 plates and 70 amp hours.



MFG., INC.  
CINCINNATI, OHIO

TITLE  
**INSTALLATION DWG**

**ET30KX-10/20**

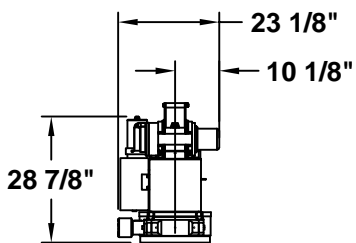
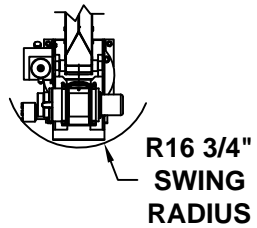
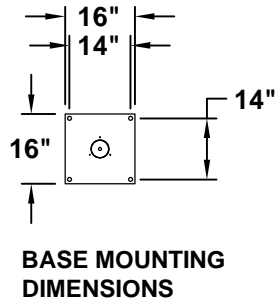
DATE  
**8-10-09A**

SUPERCEDES  
**9-19-08**

SECTION  
**C120**

**21851b**

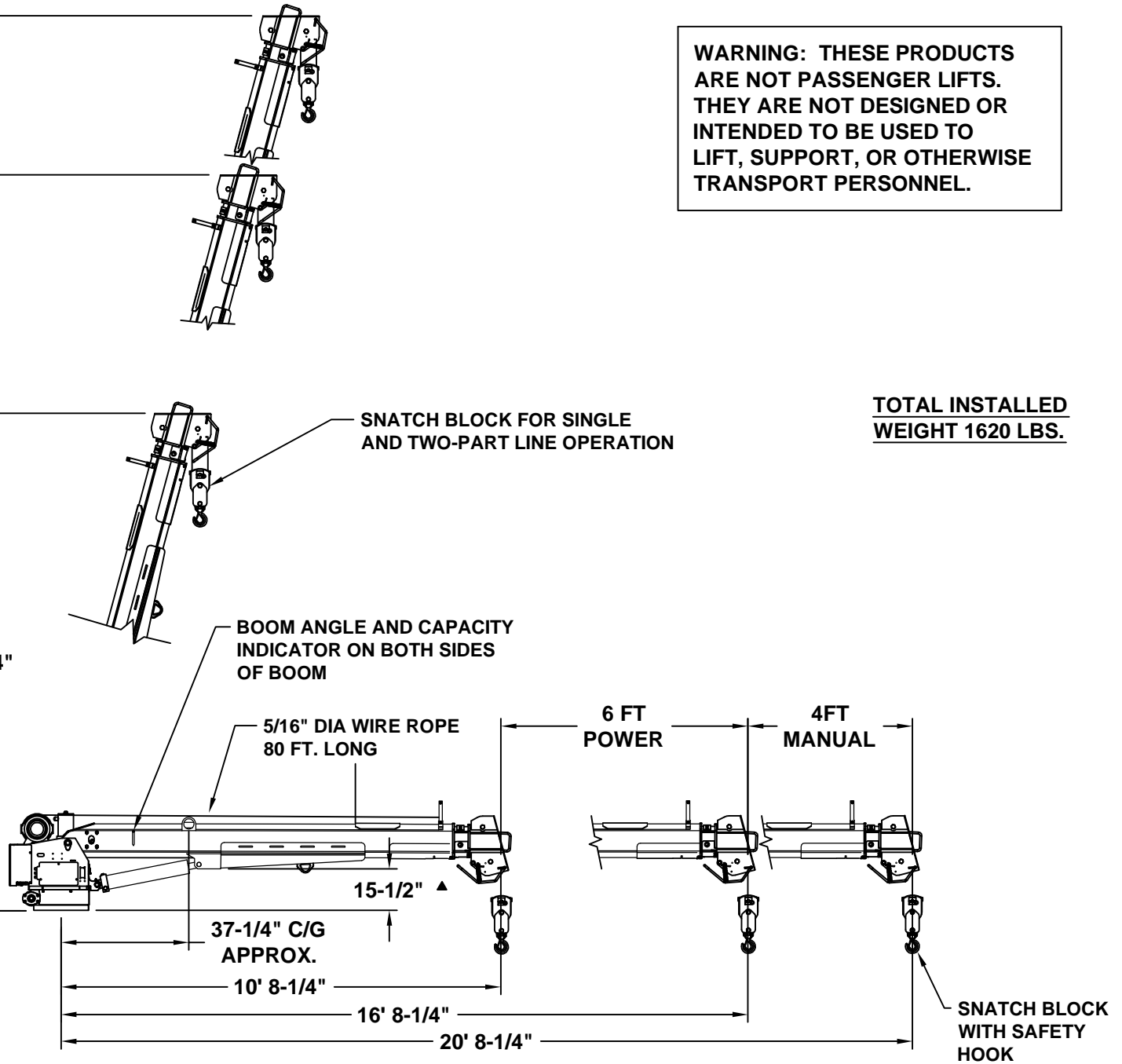
**WARNING: THESE PRODUCTS ARE NOT PASSENGER LIFTS. THEY ARE NOT DESIGNED OR INTENDED TO BE USED TO LIFT, SUPPORT, OR OTHERWISE TRANSPORT PERSONNEL.**



**21' 5-5/8"**

**17' 7-1/4"**

**11' 9-3/4"**



**TOTAL INSTALLED WEIGHT 1620 LBS.**



MANUFACTURING, INC.  
CINCINNATI, OHIO

**TITLE**  
**INSTALLATION DRAWING**

**ET30KX - 10/16/20 BOOM**

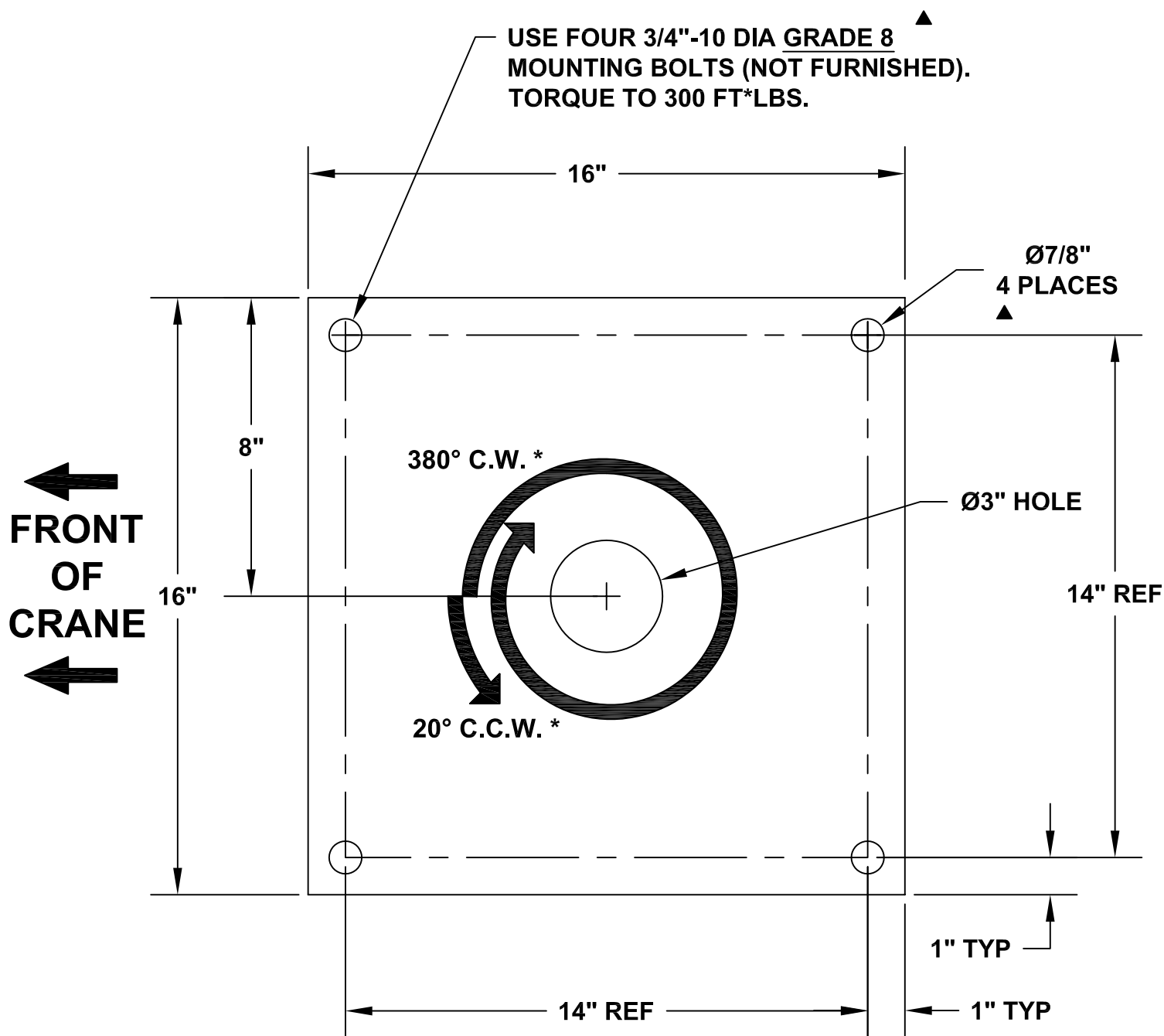
**DATE**  
**12-14-11B**

**SUPERSEDES**  
**8-7-09A**

**SECTION**  
**C100**

**21092**

## ET/HT25/30/36KX BASE MOUNTING DIMENSIONS



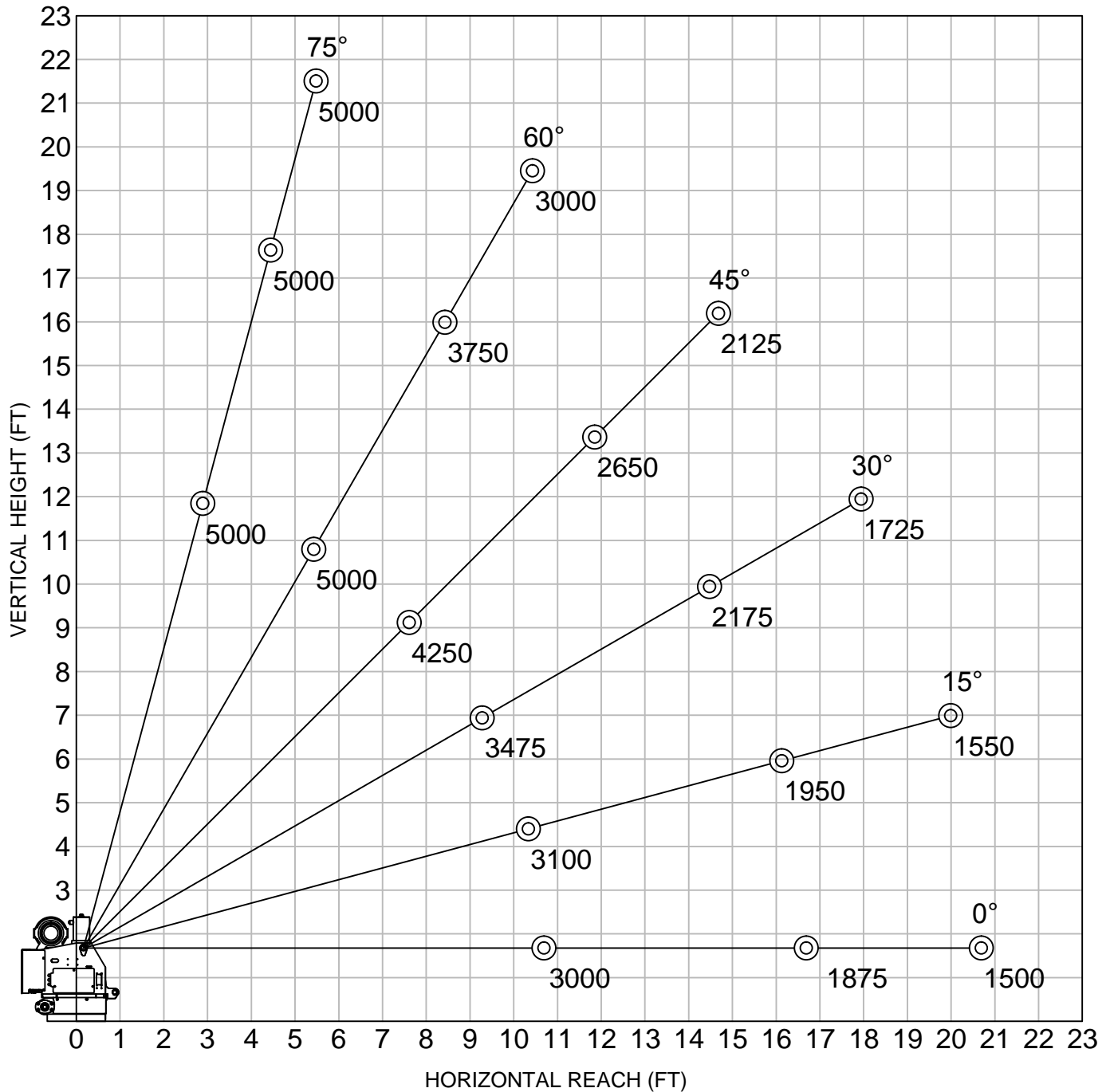
**\* Rotation limits typically apply to HT cranes only. ET cranes generally have continuous rotation. ▲**



# ET/HT30KX, 10'-16'-20' BOOM

▲ CRANE SERIAL NUMBER: \_\_\_\_\_

## MAXIMUM LOAD CAPACITY CHART



WEIGHT OF LOAD HANDLING DEVICES ARE PART OF THE LOAD AND MUST BE DEDUCTED FROM THE GROSS CAPACITY.

### LOAD BLOCK USAGE

1 PART LINE FOR LOADS LESS THAN 2500 LBS

2 PART LINE FOR LOADS OF 2500 LBS AND GREATER

WEIGHT OF LOAD BLOCK = 34 LBS



VENCO VENTURO INDUSTRIES LLC  
CINCINNATI, OHIO

TITLE  
MAXIMUM LOAD CAPACITY

ET/HT30KX, 10'-16'-20' BOOM

DATE  
05-03-16C

SUPERSEDES  
04-30-13B

SECTION  
C100

21091

# SECTION 150

## SAFETY



VENCO VENTURO INDUSTRIES LLC  
CINCINNATI, OHIO

# CRANE SAFETY AND HAZARDS

## CAUTIONS

1. INSPECT VEHICLE AND CRANE, INCLUDING OPERATION, PRIOR TO USE DAILY.
2. DO NOT USE THIS EQUIPMENT EXCEPT ON FIRM LEVEL GROUND WITH CRANE MOUNTED ON FACTORY-RECOMMENDED TRUCK.
3. BEFORE OPERATING THE CRANE, REFER TO MAXIMUM LOAD (CAPACITY) CHART ON CRANE FOR OPERATING (LOAD) LIMITATIONS.
4. DO NOT OPERATE, WALK, OR STAND BENEATH BOOM OR A SUSPENDED LOAD.
5. ATTACH PENDANT CORD SUPPORT SNAP TO ATTACHMENT POINT BEFORE PLUGGING IN PENDANT, IF SO EQUIPPED.
6. UNPLUG PENDANT AND SHUT OFF MASTER DISCONNECT SWITCH WHEN CRANE IS NOT IN USE.
7. FOR TRAVEL, BOOM MUST BE IN STOWED POSITION.

## DANGER

- THIS CRANE IS NOT A PASSENGER LIFT
- IT IS NOT DESIGNED OR INTENDED TO BE USED TO LIFT, SUPPORT, OR OTHERWISE TRANSPORT PERSONNEL.

## YOU MUST NOT OPERATE THIS CRANE, UNLESS:

1. YOU HAVE BEEN TRAINED IN THE SAFE OPERATION OF THIS CRANE, AND
2. YOU KNOW AND FOLLOW THE SAFETY AND OPERATING RECOMMENDATIONS CONTAINED IN THE MANUFACTURER'S MANUALS, YOUR EMPLOYER'S WORK RULES, AND APPLICABLE GOVERNMENT REGULATIONS. AN UNTRAINED OPERATOR SUBJECTS HIMSELF AND OTHERS TO DEATH OR SERIOUS INJURY.

## ELECTROCUTION HAZARD

- THIS MACHINE IS NOT INSULATED.
- MAINTAIN SAFE CLEARANCES FROM ELECTRICAL LINES AND APPARATUSES.
- YOU MUST ALLOW FOR BOOM SWAY, ROCK, OR SAG, AND ELECTRICAL LINE AND LOAD-LINE SWAYING
- THIS LIFTING DEVICE DOES NOT PROVIDE PROTECTION FROM CONTACT WITH OR PROXIMITY TO AN ELECTRICALLY CHARGED CONDUCTOR.
- YOU MUST MAINTAIN A CLEARANCE OF AT LEAST 10 FEET BETWEEN ANY PART OF THE CRANE, LOAD-LINE, OR LOAD, AND ANY ELECTRICAL LINE OR APPARATUS CARRYING UP TO 50,000 VOLTS. REFER TO DRAWING 15394 FOR ADDITIONAL INFORMATION.
- **DEATH OR SERIOUS INJURY** WILL RESULT FROM CONTACT OR INADEQUATE CLEARANCES.

## OVERLOAD SENSING SYSTEM - STANDARD ON ALL CRANES

1. IF OVERLOADED, THE WINCH UP, BOOM DOWN, AND (OPTIONAL) BOOM OUT FUNCTIONS WILL AUTOMATICALLY, SHUT OFF TO PREVENT INCREASED OVERLOAD.
2. ON CRANES EQUIPPED WITH AN OPTIONAL OVERLOAD ALARM, IT WILL ALSO SOUND.
3. IF AN OVERLOAD OCCURS, USE THE WINCH DOWN, BOOM UP OR BOOM IN FUNCTIONS TO RELIEVE THE OVERLOAD.
4. THE OVERLOAD SENSING SYSTEM IS INOPERATIVE IF THE BOOM ELEVATION IS AT THE BOTTOM OR TOP LIMIT OF TRAVEL. TO RELIEVE THIS CONDITION, RAISE OR LOWER THE BOOM SLIGHTLY BEFORE LIFTING THE LOAD.
5. SEE MANUAL FOR TESTING THE OVERLOAD SYSTEM.

## NOTICE - WARRANTY VOID IF DISCONNECTED

THE OVERLOAD SENSING SYSTEM HAS BEEN INSTALLED AS A SAFETY FEATURE TO PROTECT THE EQUIPMENT AND THE OPERATOR.

DO NOT DISCONNECT THIS SYSTEM



VENCO VENTURO INDUSTRIES LLC  
CINCINNATI, OHIO

TITLE

SAFETY & HAZARDS

DATE

01-29-15K

SECTION

C150

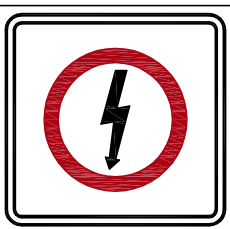
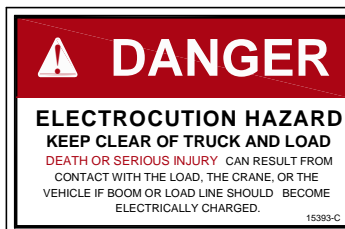
ELECTRIC CRANES

SUPERSEDES

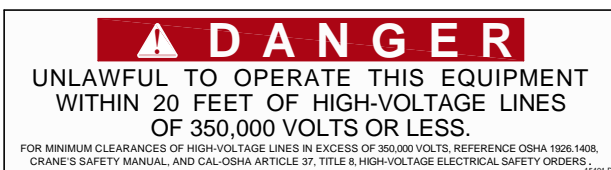
12-20-13J

850711

# VEHICLE & CRANE MOUNTED ELECTRICAL HAZARD SIGN APPLICATION & INFORMATION



SIGN NO. 15393 DISPLAYS THE INTERNATIONAL SYMBOL FOR ELECTRICITY AND WARNS OF DANGER FROM AN ELECTRICALLY CHARGED VEHICLE, CRANE, OR LOAD. FOUR ARE RECOMMENDED (ONE FOR EACH SIDE AND ONE FOR EACH END OF VEHICLE) TO BE APPLIED IN LOCATIONS WHICH ARE READILY VISIBLE TO GROUND PERSONNEL.



SIGN NO. 15401 PROVIDES ADDITIONAL WARNING OF LEGAL REQUIREMENTS WHEN OPERATING NEAR HIGH VOLTAGE LINES. THIS SIGN IS PLACED ON THE CONTROL PENDANT SIDE OF BOOM.

Table A - Minimum Clearance Distances

| Voltage<br>(nominal, kV, alternating current) | Minimum clearance distance<br>(feet) *   |
|---|--|
| Up to 50.....                                 | 10   |
| over 50 - 200.....                            | 15   |
| over 200 - 350.....                           | 20   |
| over 350 - 500.....                           | 25   |
| over 500 - 750.....                           | 35   |
| over 750 - 1000.....                          | 45   |
| Over 1000.....                                | (as established by the utility owner/operator or registered professional engineer who is a qualified person with respect to electrical power transmission and distribution). |

Table T - Minimum Clearance Distances While Traveling With No Load

| Voltage<br>(nominal, kV, alternating current) | While traveling - minimum clearance distance<br>(feet) *   |
|---|--|
| 0 - 0.75.....                                 | 4  |
| over 0.75 - 50.....                           | 6  |
| over 50 - 345.....                            | 10   |
| over 345 - 750.....                           | 16   |
| over 750 - 1000.....                          | 20   |
| Over 1000.....                                | (as established by the utility owner/operator or registered professional engineer who is a qualified person with respect to electrical power transmission and distribution). |

\* NOTE: ENVIRONMENTAL CONDITIONS SUCH AS FOG, SMOKE, OR PRECIPITATION MAY REQUIRE INCREASED CLEARANCES



VENCO VENTURO INDUSTRIES LLC  
CINCINNATI, OHIO

| TITLE              | DATE                    | SECTION |
|--------------------|-------------------------|---------|
| HAZARD APPS & INFO | 02-21-14M               | C150    |
| ET/HT CRANES       | SUPERSEDES<br>12-20-13L | 15394   |

DECAL #: 15390

DESCRIPTION: CAUTION, INSPECT VEHICLE & CRANE...

PURPOSE: TO INFORM THE OPERATOR OF KEY OPERATING REQUIREMENTS.

QUANTITY: 1

PLACEMENT: REAR COVER OR SIDE OF CRANE



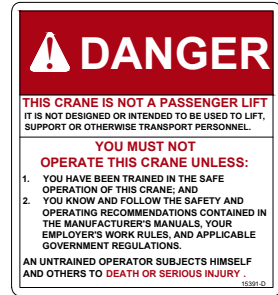
DECAL #: 15391

DESCRIPTION: DANGER, NOT A PASSENGER LIFT

PURPOSE: TO INFORM OPERATOR NOT TO LIFT, SUPPORT, OR TRANSPORT PERSONNEL, AND TO ENSURE OPERATOR IS ADEQUATELY TRAINED.

QUANTITY: 1

PLACEMENT: REAR COVER OR SIDE OF CRANE



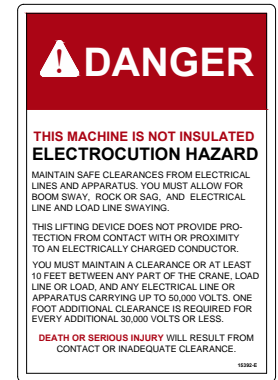
DECAL #: 15392

DESCRIPTION: DANGER, ELECTROCUTION HAZARD, MACHINE (CRANE)

PURPOSE: TO INFORM OPERATOR THAT MACHINE (CRANE) REPRESENTS AN ELECTROCUTION HAZARD SHOULD IT COME CLOSE TO OR IN CONTACT WITH AN ELECTRICAL VOLTAGE SOURCE.

QUANTITY: 1

PLACEMENT: REAR COVER OR SIDE OF CRANE



DECAL #: 15401

DESCRIPTION: DANGER, UNLAWFUL TO OPERATE

PURPOSE: TO INFORM OPERATOR OF PROPER OPERATION IN VICINITY OF ELECTRICAL LINES.

QUANTITY: 1

PLACEMENT: RING COVER OR SIDE OF CRANE



DECAL #: 15393

DESCRIPTION: DANGER, ELECTROCUTION HAZARD, VEHICLE (TRUCK)

PURPOSE: WARNS OF DANGER FROM ELECTRICALLY CHARGED VEHICLE, CRANE, OR LOAD.

QUANTITY: 4

PLACEMENT: EACH SIDE & EACH END OF VEHICLE



VENCO VENTURO INDUSTRIES LLC  
CINCINNATI, OHIO

TITLE

SAFETY DECALS

VENTURO CRANES

DATE

04-29-16E

SUPERSEDES

10-24-13D

SECTION

C150

21353

PART NO.: 15513

DECAL: MASTER DISCONNECT SWITCH

FUNCTION: To inform the operator of location and operation of master disconnect switch.

QUANTITY: 1

PLACEMENT: On master disconnect switch bracket.



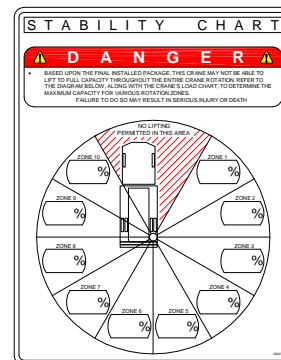
PART NO.: 20927

DECAL: CRANE STABILITY

FUNCTION: To inform the operator of the crane's lifting capacity throughout the entire rotation.

QUANTITY: 1

PLACEMENT: In prominent location, so it is easily seen and readily identifiable.



VENCO VENTURO INDUSTRIES LLC  
CINCINNATI, OHIO

TITLE  
**SAFETY DECALS**  
  
CRANES

DATE  
06-06-14C  
  
SUPERSEDES  
04-02-13B

SECTION  
C150  
  
**21384**

PART NO.: 14473-2

DECAL: CONDUCTIVE GREASE

FUNCTION: To show the operator where to apply grease.

QUANTITY: Varies

PLACEMENT: Near grease fittings.



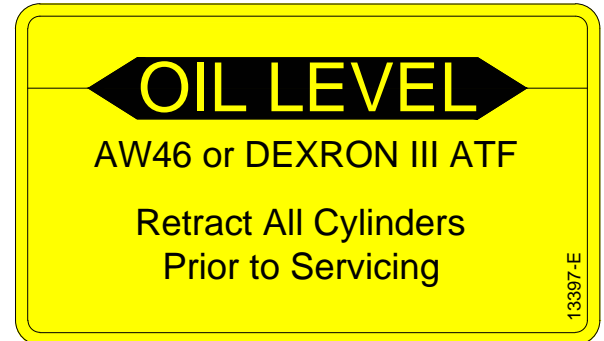
PART NO.: 13397

DECAL: OIL LEVEL

FUNCTION: To inform the operator of proper oil level to maintain.

QUANTITY: 1

PLACEMENT: Side of hydraulic power unit.



PART NO.: 15398

DECAL: UNPLUG REMOTE CONTROL

FUNCTION: To inform the operator to unplug remote control when not in use.

QUANTITY: 1

PLACEMENT: Near pendant socket.



MANUFACTURING, INC.  
CINCINNATI, OHIO

TITLE  
DECALS

ET CRANES

DATE  
11-12-19E

SUPERSEDES  
12-23-13D

SECTION  
C150

21354

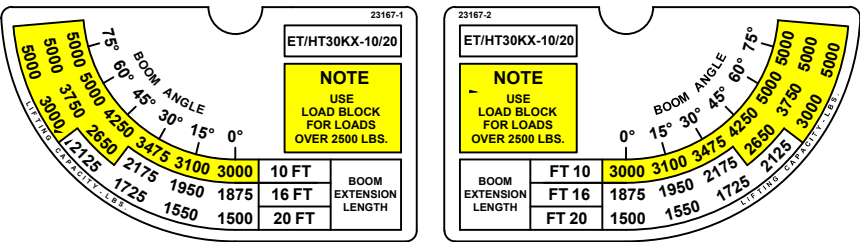
PART NO.: 23167-1 & 23167-2

DECAL: CRANE CAPACITY

FUNCTION: To show the operator the operating capacities of the crane.

QUANTITY: 1 each

PLACEMENT: One on each side of boom.



PART NO.: 23168

DECAL: MODEL NUMBER (ET30KX)

FUNCTION: To show the model of the crane.

QUANTITY: 2

PLACEMENT: One on each side of boom.

**ET30KX**

PART NO.: 19788

DECAL: PROPORTIONAL DECAL-1

FUNCTION: To show the crane has proportional feature.

QUANTITY: 2

PLACEMENT: One on each side of boom.

**PROPORTIONAL CONTROL**



VENCO VENTURO INDUSTRIES LLC  
CINCINNATI, OHIO

TITLE  
MODEL/CAPACITY DECALS  
ET30KX(P)

DATE  
09-16-19B  
SUPERSEDES  
08-10-09A

SECTION  
C150  
21853



# SECTION 200

# INSTALLATION



VENCO VENTURO INDUSTRIES LLC  
CINCINNATI, OHIO

# !! IMPORTANT !!

## ADEQUATE WIRING IMPERATIVE FOR PROPER OPERATION

1. PROPER GROUND PATH - SEE DWG 15660
2. CURRENT DRAW IS SEVERAL HUNDRED AMPERES - ADEQUATE WIRE SIZE AND BATTERY CAPACITY IS ABSOLUTELY ESSENTIAL (SEE CHART BELOW).

### ▲ MINIMUM WIRE GAUGE AND AUXILIARY BATTERY SIZE

| ▲ MINIMUM WIRE GAUGE AND AUXILIARY BATTERY SIZE                            |  |       |       |       |       |                 |       |       |  |              |
|--|--|-------|-------|-------|-------|-----------------|-------|-------|--|--------------|
| MODEL  | TOTAL LENGTH OF CABLE (FT) *                         |       |       |       |       |                 |       |       | ▲ 12 VOLT AUXILIARY BATTERY REQUIREMENTS |              |
|  | 0-20   | 21-25 | 26-30 | 31-40 | 41-50 | 51-60           | 61-70 | 71-80 | CCA (A) **                               | RC (MIN) *** |
| ▲ CE1500<br>CE6K<br>CT2000<br>CT2003/4/5<br>DT7K                           | #4   | #4    | #2    | #2    | #1    | #0              | #0    | #00   | 350                                      | 100          |
| ET5500MPB<br>ET5500R<br>ET6KMPB<br>ET6KR<br>ET6K<br>ET8K<br>ET10K<br>ET12K | #2   | #2    | #1    | #0    | #00   | NOT RECOMMENDED |       |       | 450                                      | 100          |
| ET8KX<br>ET10KX<br>ET12KX<br>▲ ET12KXP                                     | #2   | #2    | #1    | #0    | #00   | NOT RECOMMENDED |       |       | 550                                      | 150          |
| ET18K(X)<br>ET25K(X)<br>ET30KX<br>ET36KX                                   | SEE DRAWING 15660 FOR CABLE AND BATTERY REQUIREMENTS |       |       |       |       |                 |       |       |  |              |

\* INCLUDES GROUND CABLE

\*\* CCA = COLD CRANKING AMPS AT 0° (F).

\*\*\* RC = RESERVE CAPACITY IN MINUTES AT 25 AMPS AND 80° (F).  
THE RC RATING IS A MEASURE OF THE PERIOD OF TIME THE BATTERY CAN SUPPLY A GIVEN CURRENT WITHOUT RECHARGING.



VENCO VENTURO INDUSTRIES LLC  
CINCINNATI, OHIO

TITLE  
CABLE & BATTERY

ELECTRIC CRANES

DATE  
07-30-18X

SUPERSEDES  
09-27-17W

SECTION  
C200

711105

# RECOMMENDED CIRCUIT BREAKER TABLE

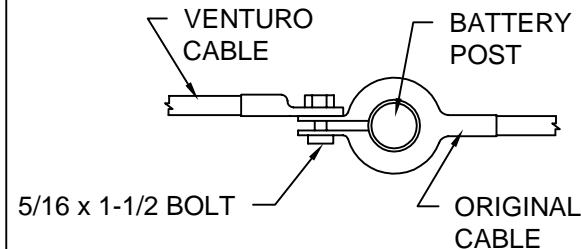
| CRANE         | DESCRIPTION         | PART NO.  |
|---------------|---------------------|-----------|
| CT310KX       | 250 AMP, MAN RESET  | 22946-250 |
| DT7           | 250 AMP, MAN RESET  | 22946-250 |
| CE-1500-FB    | 150 AMP, MAN RESET  | 22946-150 |
| CE6K          | 150 AMP, MAN RESET  | 22946-150 |
| CT200X        | 250 AMP, MAN RESET  | 22946-250 |
| ET6K          | 250 AMP, MAN RESET  | 22946-250 |
| ET8/12K(X)    | 250 AMP, MAN RESET  | 22946-250 |
| ET12KXP       | 300 AMP, MAN RESET  | 22946-300 |
| ET16/18KX-16' | 250 AMP, MAN RESET  | 22946-250 |
| ET16/18KX-20' | 300 AMP, MAN RESET  | 22946-300 |
| ET25/30KX     | 300 AMP, AUTO RESET | 22946-300 |
| ET36KX        | 300 AMP, AUTO RESET | 22946-300 |

# BATTERY REQUIREMENTS

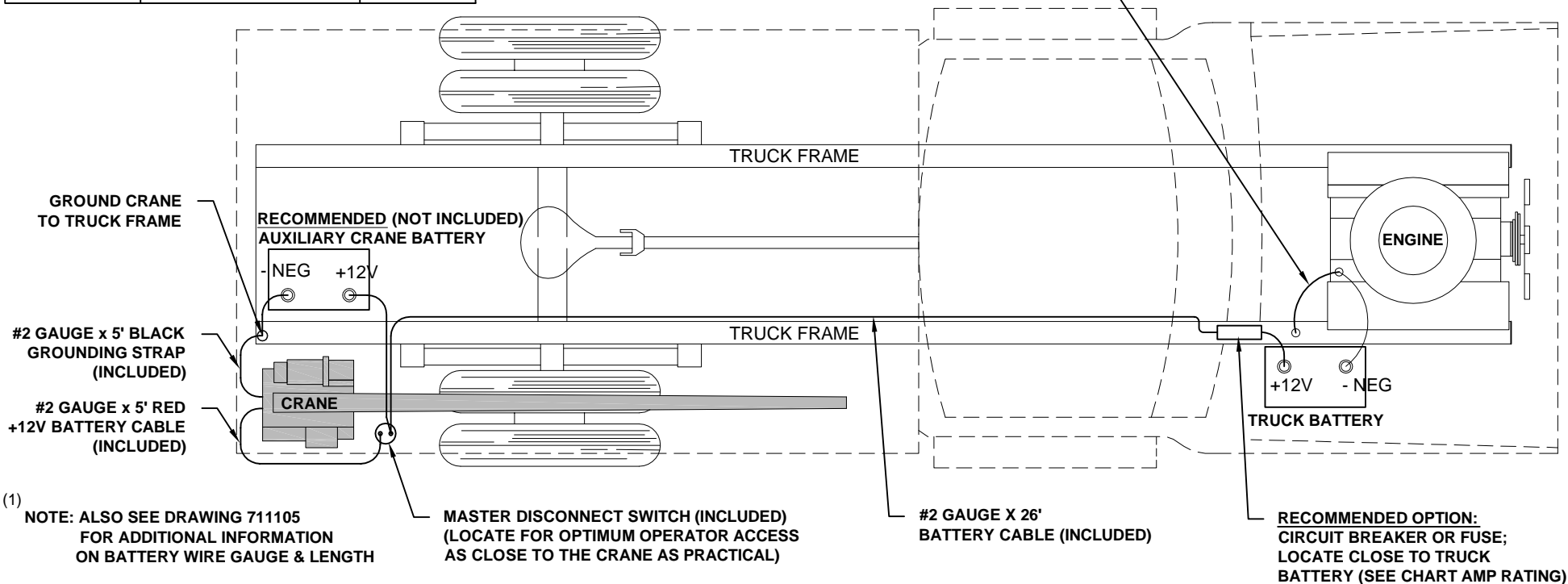
- 12 VOLT VEHICLE BATTERY REQUIREMENTS
  - 625 COLD CRANKING AMPS (AT 0° F)
  - 160 MINUTES RESERVE CAPACITY
  - 102 PLATES, 105 AMP-HR
- (1) 12 VOLT AUXILIARY BATTERY REQUIREMENTS
  - SEE MINIMUM WIRE GAUGE AND BATTERY SIZE

**NOTE: OPERATING WITH THE VEHICLE BATTERY 'ONLY' IS PERMISSIBLE, BUT NOT RECOMMENDED.**

# RECOMMENDED BATTERY TERMINAL ATTACHMENT



**INSTALL #2 GAUGE GROUND STRAP FROM ENGINE TO TRUCK FRAME (REQUIRED IF NEGATIVE FROM BATTERY IS CONNECTED TO ENGINE)**



VENCO VENTURO INDUSTRIES LLC  
CINCINNATI, OHIO

TITLE

BATTERY CABLE & COMPONENT INSTALL

ET CRANES

DATE

09-03-20M

SUPERSEDES

07-30-18L

SECTION

C200

15660

# STABILITY TEST - ET/HT30-20' SERIES

## Overview

Venturo follows the guidelines of ANSI B30.5 in defining stability. Generally speaking, a truck is considered stable as long as it is not on the verge of tipping - i.e. with the truck level, at least one tire on each corner of the truck must remain in contact with the ground.

It is important to note that nearly every installation is unique and will, therefore, typically require stability testing.

The procedure outlined below follows ANSI's (B30.5 - 5-1.1.1) specified "maximum load rating" of 85% of truck stability.

## Testing Procedure

1. Locate the truck on firm, level ground and set parking brake.
2. Fully deploy stabilizers, making sure they are firmly in contact with supportive ground; use stabilizer pads as required. The tires of the truck should remain in full contact with the ground.
3. Inspect wire rope and other key components of crane (consult owners manual for more information).
4. Conduct an operational check of all crane functions.
5. Locate the Overload Pressure Switch at the base of the elevation cylinder
  - 5.1. Disconnect the black & white wires from the housing and then connect the black & white wires together to by-pass the Overload Pressure Switch for the stability test. **Note: The black & white wires MUST be reconnected to the Overload Pressure Switch after the stability test has been completed.**
6. Use a **Test Weight** weighing a **minimum** of **1765 lbs.** (includes load block weight of 34 lbs.) to a **maximum of 1825 lbs.**
7. Position the boom level and fully retracted.
8. Referring to the Stability Chart (drawing 20907) rotate the crane to a position between 1 and 2 o'clock (truck cab is facing 12 o'clock) to begin testing.
9. Use the winch to lift the Test Weight; DO NOT allow the weight to be more than 6" off the ground at any time during testing (for safety).
10. Using a weight weighing between **1765 to 1825 lbs.**, extend the boom slowly, until one of two conditions occur:
  - 10.1. Full extension is reached - Mark the ZONE in question **100%**
  - 10.2. The VLC system stops the boom extension - Mark the ZONE in question **100%**
  - 10.3. The truck becomes unstable i.e. a tire lifts off the ground
    - 10.3.1. Retract the boom until at least one tire on each corner of the truck is making contact with the ground
    - 10.3.2. Use the formula below to determine the allowable **% of Rated Capacity** for the ZONE in question.
11. Note: The **"Max Stable Reach in inches"** is measured from the **center of rotation** of the crane housing to the **lifting load hook**.

$$\% \text{ Rated Capacity} = \frac{\text{"Max Stable Reach" in inches}}{248} \times 100$$

12. Record the **% of Rated Capacity** in the appropriate blank (region) on the Crane Stability page (ref. 20907) and decal.
13. Repeat Steps 7 through 12 for each ZONE on the stability page.



VENCO VENTURO INDUSTRIES LLC  
CINCINNATI, OHIO

TITLE

STABILITY TEST

DATE

11-23-21D

SECTION

C200

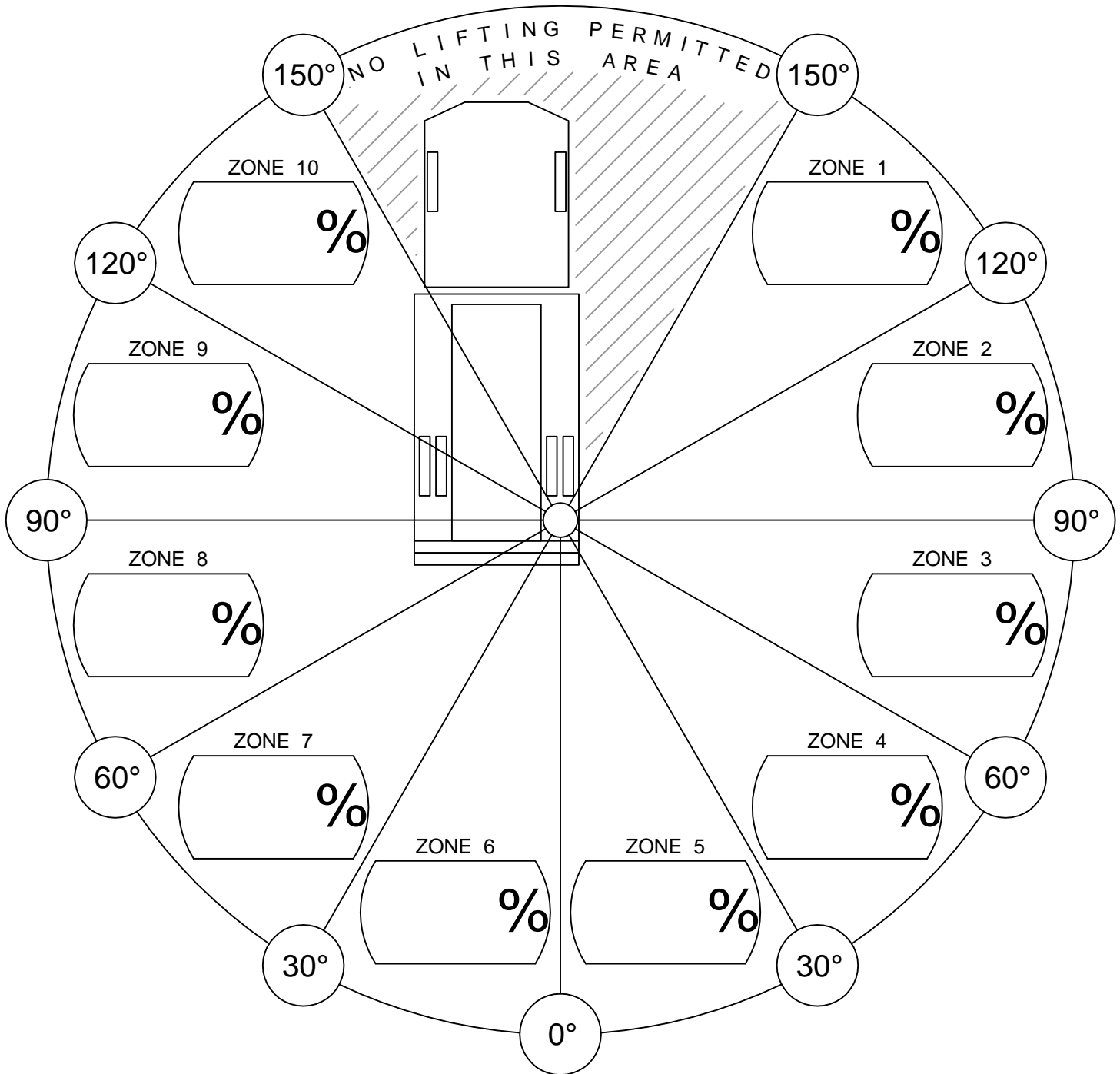
ET/HT30-20' SERIES

SUPERSEDES

02-26-21C

20906-30

# CRANE STABILITY



% of Rated Capacity for each of the 10 regions are provided above.

## CONDITIONS:

- STABILIZERS FULLY EXTENDED & DOWN, ON FIRM LEVEL GROUND.



VENCO VENTURO INDUSTRIES LLC  
CINCINNATI, OHIO

TITLE  
STABILITY CHART  
VENTURO CRANES

DATE  
05-11-17F  
SUPERSEDES  
02-21-14E

SECTION  
C200  
20907

# WIRE ROPE INSTALLATION

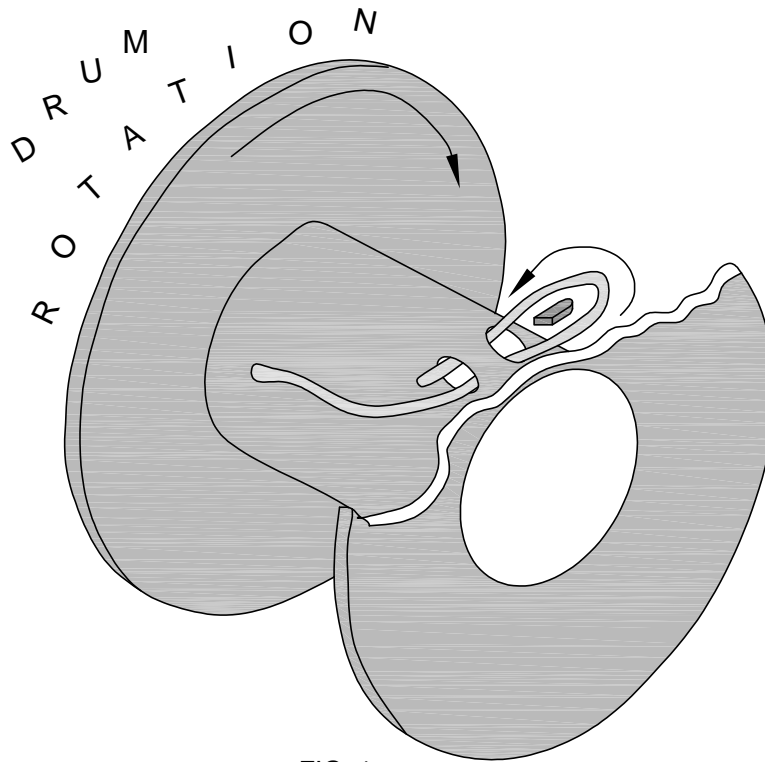


FIG. 1

- STEP 1: UNWIND COIL OF WIRE ROPE BY 'ROLLING' ALONG THE FLOOR. THIS WILL PREVENT 'KINKING'.
- STEP 2: INSERT WIRE ROPE END UP THROUGH ANTI-2-BLOCK (A2B) CAGE ASSEMBLY, BETWEEN CHEEK PLATES, OVER THE TOP SHEAVE, AND THROUGH WIRE ROPE GUIDE.
- STEP 3: INSERT WIRE ROPE END INTO POCKET OPENING ON WINCH, WRAP AROUND WEDGE, AND BACK THROUGH POCKET OPENING AS SHOWN IN FIGURE 1.



## CAUTION

- IF THE WIRE ROPE IS NOT INSTALLED FOR THE CORRECT DRUM ROTATION, THE WINCH BRAKE VALVE WILL NOT HOLD THE LOAD.



## CAUTION

- THERE MUST ALWAYS BE AT LEAST [5] DEAD WRAPS OF WIRE ROPE ON THE WINCH DRUM WHILE UNDER LOAD.

NOTE: SOME WINCHES MAY BE SUPPLIED WITH A HEX NUT IN LIEU OF A WEDGE FOR INSTALLING THE WIRE ROPE.



VENCO VENTURO INDUSTRIES LLC  
CINCINNATI, OHIO

TITLE

WIRE ROPE INSTALLTN

DATE

02-21-14K

SECTION

C200

ET6K & LARGER CRANES

SUPERSEDES

12-26-13J

22245

# **SECTION 300**

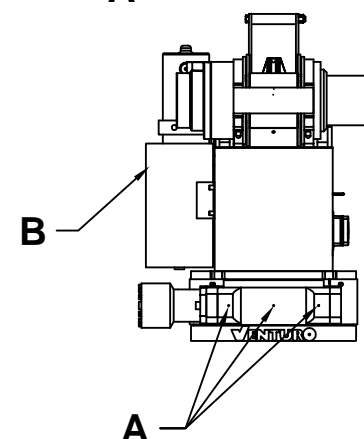
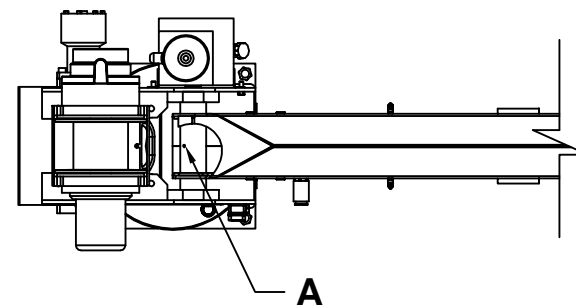
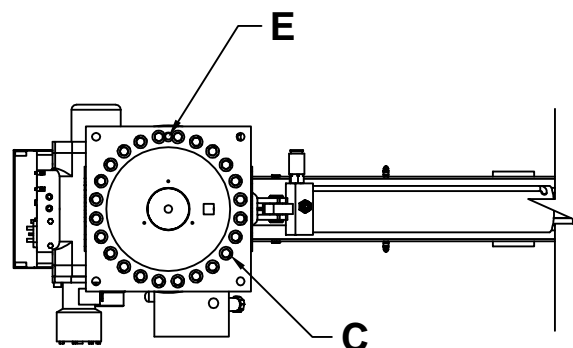
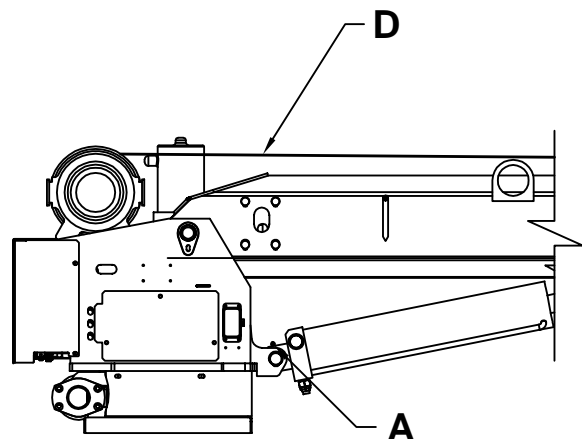
## **MAINTENANCE**

### **&**

## **SERVICE**



VENCO VENTURO INDUSTRIES LLC  
CINCINNATI, OHIO

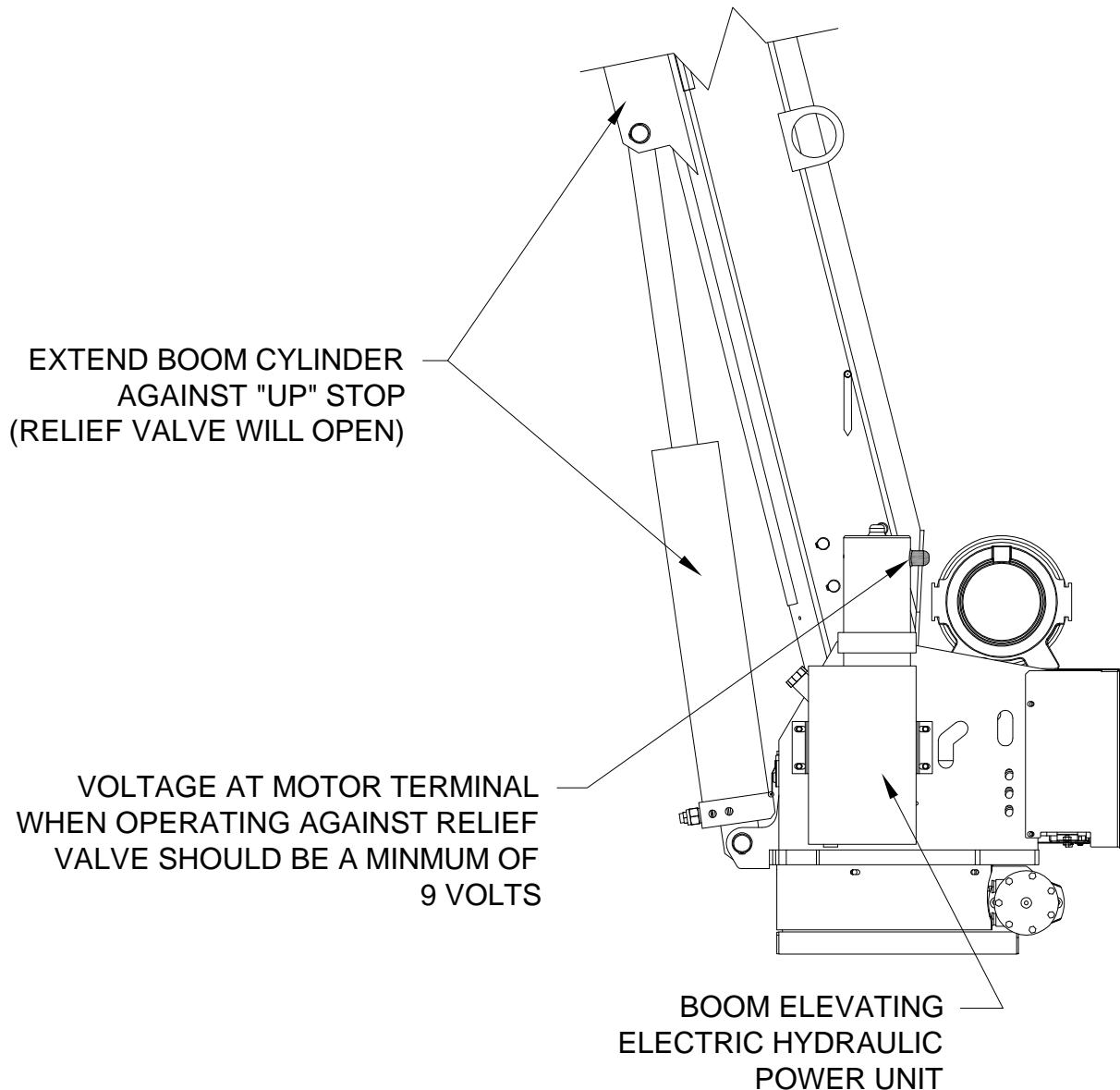


| Location | Service Required                               | Note  |  | Service Interval  |
|----------|--|---|--|---|
| A        | Grease fitting With Pressure Grease Gun        | <b>USE ELECTRICALLY CONDUCTIVE GREASE</b><br>Example: Fuch's Renolit Aluminum Complex Grease<br>P/N 155250-2 (or equivalent). |  | Time of Truck Service   |
| B        | Fill Oil Reservoir to Oil Level with Boom Down | Use Dextron III ATF or ISO Grade AW 46 for Ambient Temperatures Between -22° F and 30° F                                      | Use ISO Grade 68 or Equivalent for Ambient Temperatures Between 10° F and 125° F | Time of Truck Service and as required by changes in the ambient temperature range |
| C        | Check Torque of bolts                          | Bolts should be torqued to 60 ft-lbs  |  | Time of Truck Service   |
| D        | Check Wire Rope and Hook                       | Rope should be free of kinks and fraying  |  | Time of Truck Service   |
| E        | Grease Fitting With Pressure Grease Gun        | <b>USE ELECTRICALLY CONDUCTIVE GREASE</b><br>Example: Fuch's Renolit Aluminum Complex Grease<br>P/N 155250-2 (or equivalent). |  | Every 6 months  |



# MINIMUM VOLTAGE TEST

ONE OF THE MOST COMMON ELECTRICAL PROBLEMS ENCOUNTERED ON 12 VOLT ELECTRICAL CRANES IS INSUFFICIENT VOLTAGE AT THE MOTOR WHEN DRAWING THE LARGE CURRENT THAT EXISTS AT FULL LOAD



MANUFACTURING, INC.  
CINCINNATI, OHIO

|                      |
|----------------------|
| TITLE                |
| MINIMUM VOLTAGE TEST |
| ET SERIES CRANES     |

|            |
|------------|
| DATE       |
| 12-26-13G  |
| SUPERSEDES |
| 10-05-09F  |

|         |
|---------|
| SECTION |
| C300    |
| 19963   |

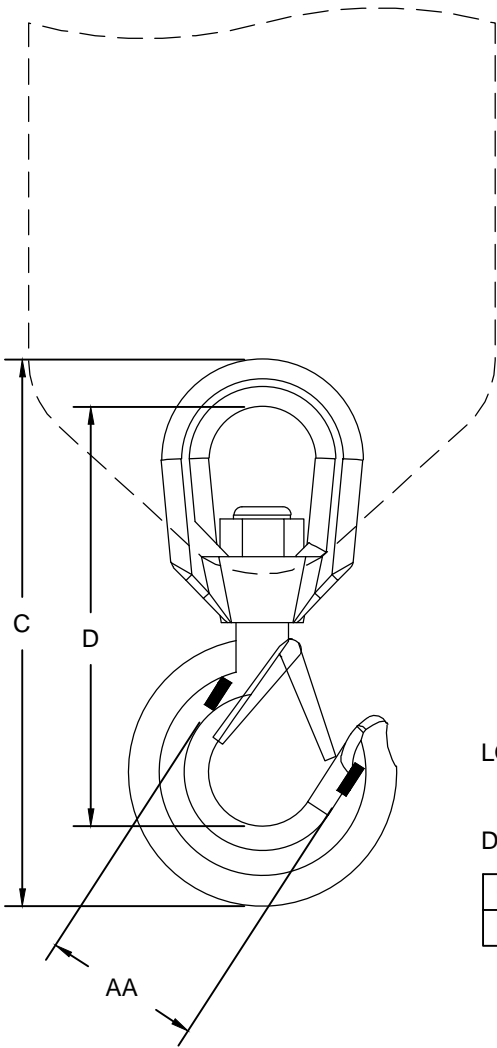
WIRE ROPE ASSEMBLY

WIRE ROPE:  
5/16" DIA, 80' LONG  
GAC 7X19 XIP-RHRL-IWRC, SB 9800 LBS  
P/N: 27668-5/16-80



TERMINATES IN THIMBLE  
NO HOOK

LOAD BLOCK ASSEMBLY



LOAD BLOCK HOOK:  
RATING: 3 TONNE (6615 LBS)  
DIMENSIONS:

| COLOR | BRAND  | AA    | C     | D     |
|-------|--------|-------|-------|-------|
| GOLD  | CROSBY | 2.00" | 8.25" | 6.50" |



VENCO VENTURO INDUSTRIES LLC  
CINCINNATI, OHIO

TITLE  
WIRE ROPE & HOOK SPECIFICATIONS

ET16/18KXX-20, ET/HT25/30KX

DATE  
11-17-23D

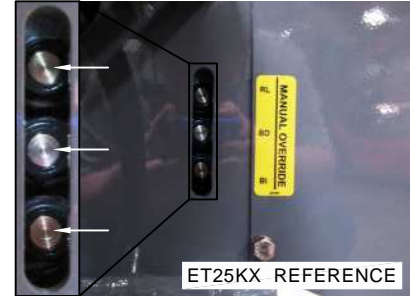
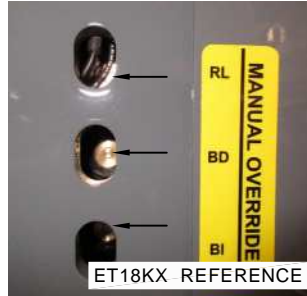
SUPERSEDES  
03-12-20C

SECTION  
C300

23228

MANUAL OVERRIDE INSTRUCTIONS  
ET NON-PROPORTIONAL SERIES CRANES ▲

!! READ ALL INSTRUCTIONS BEFORE PERFORMING MANUAL OVERRIDE PROCEDURES !!



Each valve station incorporates [2] hydraulic ports and [2] coils. Manual override shafts are located in the center of the coils (see figure 1). Manual override decals are placed on each crane near the valve assembly. These decals provide a visual aid that helps the operator determine the function designations (Reference figure 2).

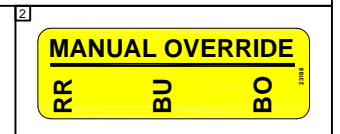
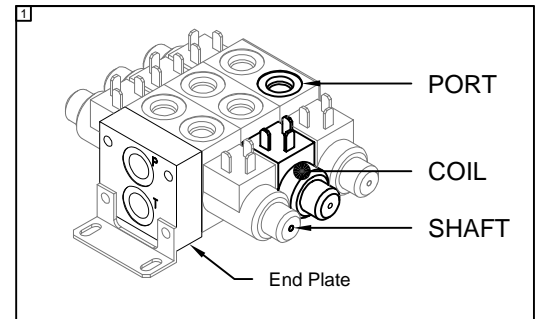
2-STATION FUNCTIONS:

RR = Rot. Right RL = Rot. Left  
BU = Boom Up BD = Boom Down

3-STATION FUNCTIONS include previous functions, plus:

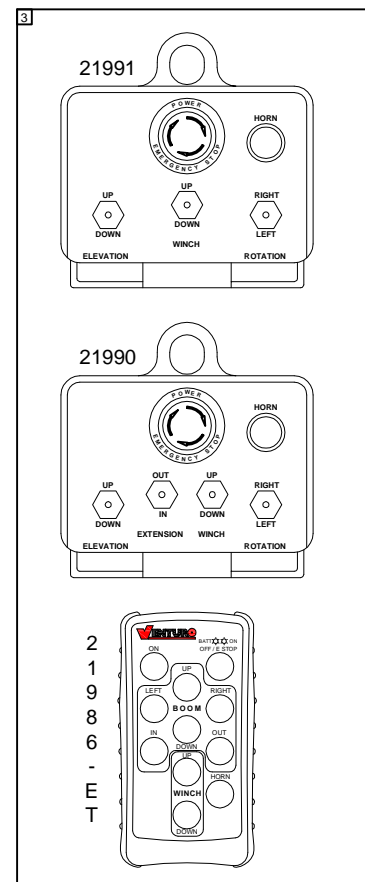
BI = Boom In BO = Boom Out

**ALWAYS BE SURE TO CHECK HYDRAULIC OIL LEVEL BEFORE PROCEEDING. IT IS RECOMMENDED TO REMOVE ANY ITEM(S) THAT MAY INTERFERE WITH OPERATING THE CRANE MANUALLY. IF POSSIBLE, STRAPS AND/OR HARNESSES SHOULD BE REMOVED BEFORE OPERATING A CRANE IN MANUAL OVERRIDE !!**



Procedure:

1. Turn Master disconnect switch to "ON"
2. Power up the pendant / radio
  - 2.1. PENDANT - twist EMERGENCY STOP button clockwise
  - 2.2. RADIO - Press green ON button
3. On the crane, reference the function you wish to perform using the manual override decal
4. Using a tool with a diameter of 1/8" or smaller, press the shaft inward and hold
5. Reference the functions listed on your pendant or radio (see figure 3)
6. Press the switch or button for the same function
7. If you need to change function,
  - 7.1. Release switch or button
  - 7.2. Remove tool from shaft
  - 7.3. Go to step 3



For assistance, please feel free to contact Technical Support at 800-226-2238.



VENCO VENTURO INDUSTRIES LLC  
CINCINNATI, OHIO

TITLE  
MAN. OVERRIDE INSTR.  
ET NON-PROP CRANES

DATE  
03-08-19A  
SUPERSEDES  
02-09-17

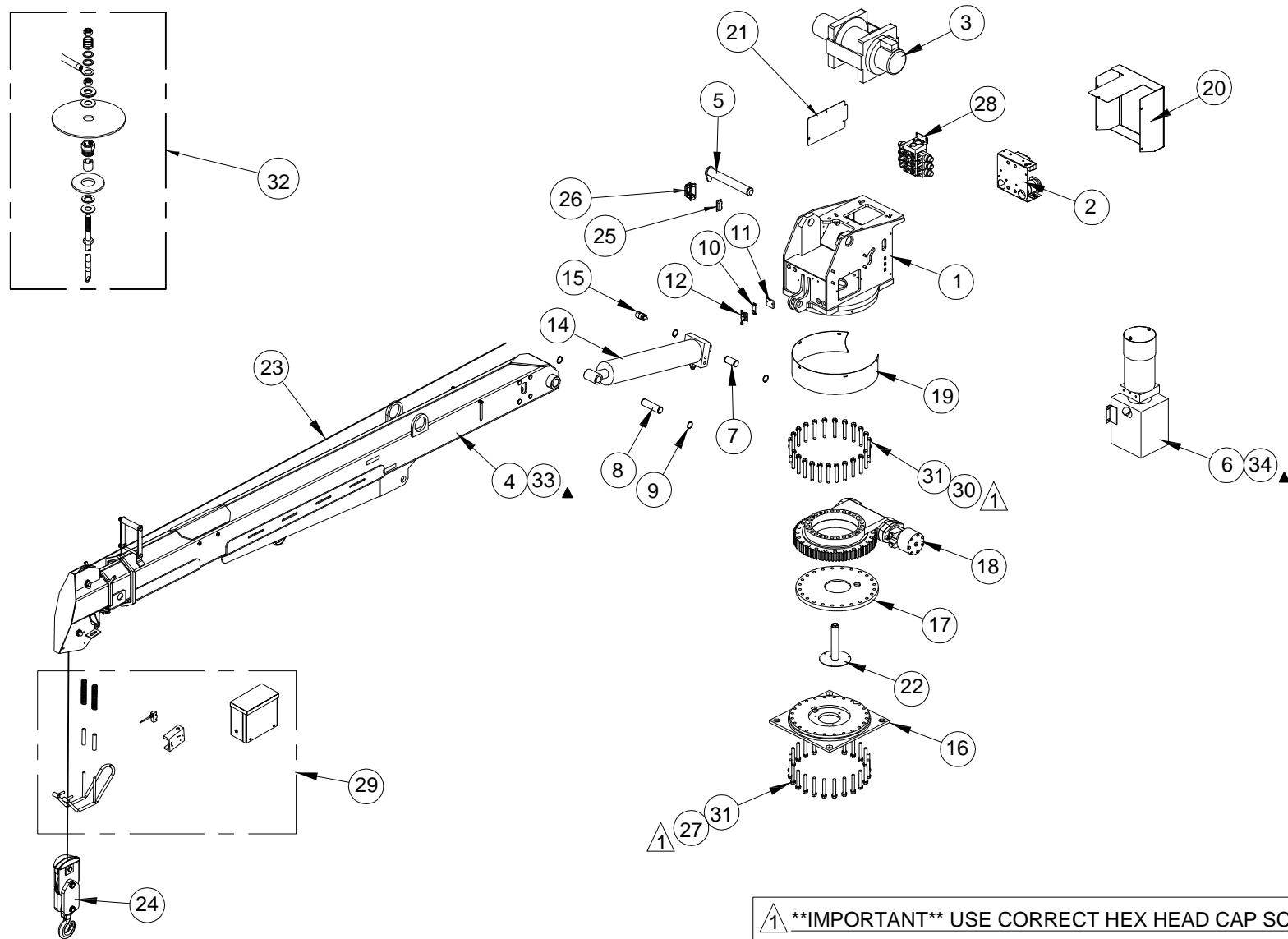
SECTION  
C200  
23084

# **SECTION 400**

## **REPLACEMENT PARTS**



VENCO VENTURO INDUSTRIES LLC  
CINCINNATI, OHIO



**\*\*IMPORTANT\*\* USE CORRECT HEX HEAD CAP SCREW**

- ITEM # 30, P/N !HHCSM12175090-8.8 (90MM LONG) FOR 'TOP' OF SLEWING RING
- ITEM # 27, P/N !HHCSM12175080-8.8 (80MM LONG) FOR 'BOTTOM' OF SLEWING RING

REPLACEMENT PARTS LIST - REF 21855



VENCO VENTURO INDUSTRIES LLC  
CINCINNATI, OHIO

TITLE

REPLACEMENT PARTS DRAWING

ET30KX SERIES CRANES

DATE

03-08-17F

SUPERSEDES

01-29-13E

SECTION

C400

21854

| 34       | 1    | 27512              | HYDRAULIC POWER UNIT; DUAL-STAGE BOOM   |
|----------|------|--------------------|---|
| 33       | 1    | 27197              | BOOM FINAL ASS'Y (DUAL-STAGE)           |
| 32       | 1    | 16780-1            | SWIVEL TERMINAL ASS'Y.                  |
| 31       | 50   | !LWSH-050          | LOCK WASHER; 1/2"                       |
| 30       | 26   | !HHCSM12175090-8.8 | HHCS; 12MM-1.75MM X 90MM LG, GR. 8.8    |
| 29       | 1    | 27738              | ANTI-2-BLOCK; MECHANICAL ASS'Y.         |
| 28       | 1    | 28801              | VALVE BLOCK - 3-SPOOL                   |
| 27       | 24   | !HHCSM12175080-8.8 | HHCS; 12MM-1.75MM X 80MM LG, GR. 8.8    |
| 26       | 1    | 19425              | SOCKET CASE                             |
| 25       | 1    | 19428              | INSERT; 10 PIN FEMALE                   |
| 24       | 1    | 27667              | LOAD BLOCK; 6000 LBS.                   |
| 23       | 1    | 27668-5/16-80      | WIRE ROPE; 5/16" X 80 FT.               |
| 22       | 1    | 27568              | CANDLESTICK ASS'Y.; SWIVEL PIGTAIL      |
| 21       | 1    | 27000              | SIDE COVER; HOUSING                     |
| 20       | 1    | 27600              | REAR COVER; HOUSING                     |
| 19       | 1    | 27186              | COVER; SLEWING RING                     |
| 18       | 1    | 21418              | SLEWING RING                            |
| 17       | 1    | 27520H             | SPACER                                  |
| 16       | 1    | 27520M-2-R         | WELDED ASS'Y.; BASE                     |
| 15       | 1    | 17460-2700-21      | OVERLOAD PRESSURE SWITCH                |
| 14       | 1    | 21752              | ELEVATION CYLINDER                      |
| 13       | 1    | 19269              | CABLE CLAMP; 1/4"                       |
| 12       | 1    | 19917              | SWITCH BRACKET; BOOM SHUT-OFF           |
| 11       | 1    | 20896              | MOUNTING BLOCK; BOOM SWITCH             |
| * 10     | 1    | 19918              | SWITCH; BOOM SHUT-OFF                   |
| 9        | 4    | !SRNG-125          | RETAINING RING; 1/4" SHAFT DIA.         |
| 8        | 1    | 18761              | PIVOT PIN; ELEVATION CYLINDER           |
| 7        | 1    | 18762              | PIVOT PIN; ELEVATION CYLINDER           |
| 6        | 1    | 27009              | HYDRAULIC POWER UNIT; SINGLE-STAGE BOOM |
| 5        | 1    | 27003              | PIVOT PIN; MAIN BOOM PIVOT              |
| 4        | 1    | 27198              | BOOM FINAL ASS'Y (SINGLE-STAGE)         |
| 3        | 1    | 19813              | ELECTRIC WINCH                          |
| 2        | 1    | 23154-2            | ELECTRICAL COMPONENT ASS'Y.             |
| 1        | 1    | 27184              | WELDED ASS'Y.; HOUSING                  |
| ITEM NO. | QTY. | PART NO.           | DESCRIPTION                             |

(\*) NOT ILLUSTRATED

REFERENCE REPLACEMENT PARTS DRAWING 21854



VENCO VENTURO INDUSTRIES LLC  
CINCINNATI, OHIO

TITLE

REPLACEMENT PARTS LIST

DATE

06-26-25J

SECTION

C400

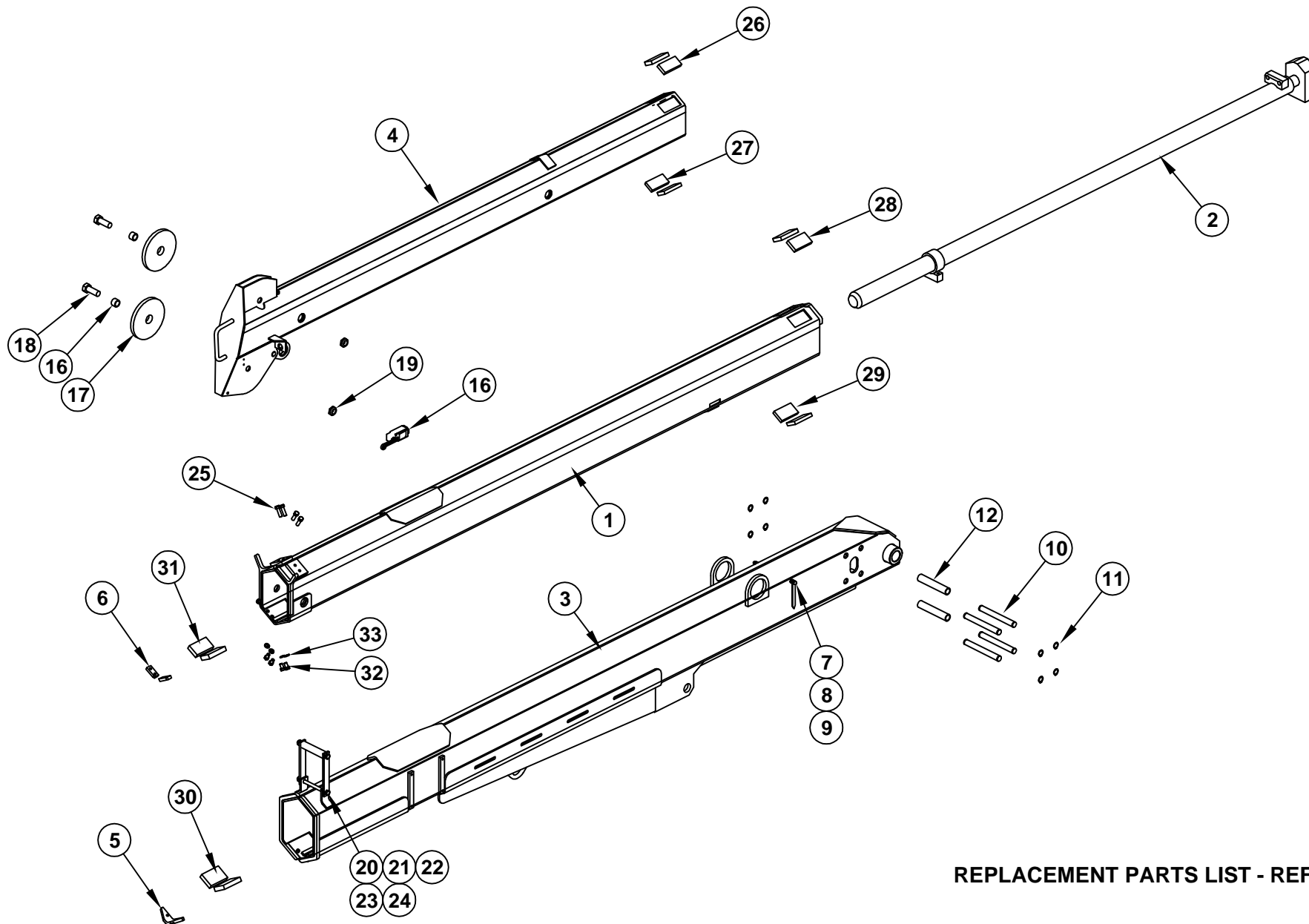
ET30KX SERIES CRANES

SUPERSEDES

03-08-17H

21855

# 27198 BOOM REPLACEMENT PARTS

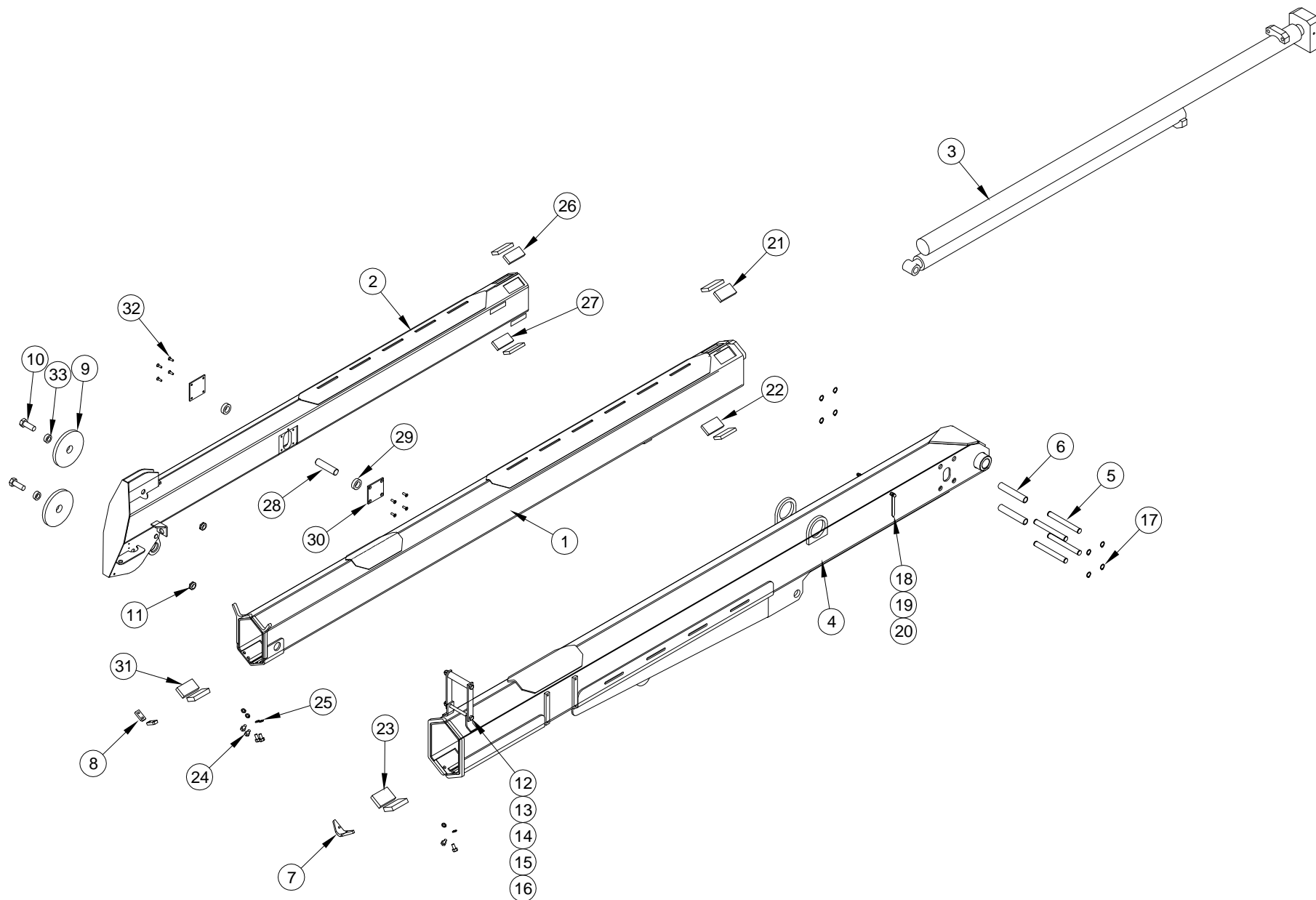


REPLACEMENT PARTS LIST - REF 21199

| 33       | 6            | !LWSH-038     | LOCK WASHER 3/8"                   |
|----------|--------------|---------------|------------------------------------|
| 32       | 6            | !HHCS03816063 | HEX HEAD CAP SCREW 3/8-16 X 5/8 LG |
| 31       | 2            | 23217-10      | UHM W PAD                          |
| 30       | 2            | 23217-3       | UHM W PAD                          |
| 29       | 2            | 23217-9       | UHM W PAD                          |
| 28       | 2            | 23217-8       | UHM W PAD                          |
| 27       | 2            | 23217-7       | UHM W PAD                          |
| 26       | 2            | 23217-6       | UHM W PAD                          |
| 25       | 4            | !CACS03816075 | C-SINK CAP SCREW 3/8-16 X 3/4 LG   |
| 24       | 2            | !LNUT-04414   | NYLON INSERT LOCK NUT - 7/16-14    |
| 23       | 1            | 21560         | ROLLER,UHM W GUIDE                 |
| 22       | 1            | 21936         | FLAT,MOUNT;WIRE ROPE GUIDE         |
| 21       | 1            | !HHCS04414550 | HHCS - 7/16-14 X 5-1/2 LG          |
| 20       | 1            | 21935         | WIRE-ROPE GUIDE WELDED             |
| 19       | 2            | !LNUT-07510   | LOCKNUT 3/4-10                     |
| 18       | 2            | 17059-6       | SHEAVE AXLE 3/4 X 2 W/ 1" SHANK    |
| 17       | 2            | 27001         | SHEAVE - BOOM                      |
| 16       | 2            | 23924         | SPACER - SHEAVE                    |
| 15       | -            | -             | -                                  |
| 14       | -            | -             | -                                  |
| 13       | -            | -             | -                                  |
| 12       | 2            | 21498         | EXTENSION CYLINDER ROLLER          |
| 11       | 8            | !SRNG-075     | RETAINING RING - 3/4" SHAFT DIA.   |
| 10       | 4            | 21497         | THRUST PIN - EXTENSION CYLINDER    |
| 9        | 2            | !ANUT-02520S  | ACORN NUT 1/4-20 STAINLESS         |
| 8        | 2            | 13459-2       | BOOM ARROW 4-7/16 LONG             |
| 7        | 2            | 22490         | SPACER, BOOM ARROW 1/2" O.D.       |
| 6        | 2            | 23119         | BEARING RETAINING BLOCK            |
| 5        | 1            | 23183         | V-BLOCK SLIDER                     |
| 4        | 1            | 27110         | TERTIARY BOOM WELDED ASSEMBLY      |
| 3        | 1            | 21472         | PRIMARY BOOM WELDED ASSEMBLY       |
| 2        | 1            | 20061         | EXTENSION CYLINDER - HOLLOW ROD    |
| 1        | 1            | 27108         | SECONDARY BOOM WELDED ASSEMBLY     |
| ITEM NO. | EXPLODE/QTY. | PART NUMBER   | DESCRIPTION                        |

**REPLACEMENT PARTS  
DRAWING - REF 21198**





REFERENCE REPLACEMENT PARTS LIST #21089



VENCO VENTURO INDUSTRIES LLC  
CINCINNATI, OHIO

TITLE  
REPLACEMENT PARTS DWG, 27197 BOOM  
ET25-36KX SERIES CRANES

DATE  
03-08-17B  
SUPERSEDES  
12-20-11A

SECTION  
C400  
21088

REPLACEMENT PARTS LIST, 27197 BOOM  
ET25-36KX SERIES CRANES

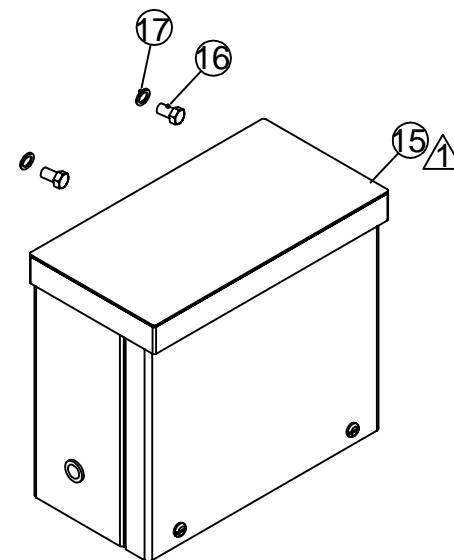
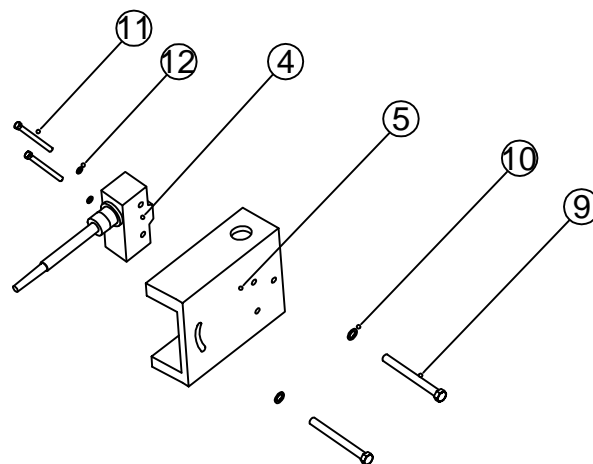
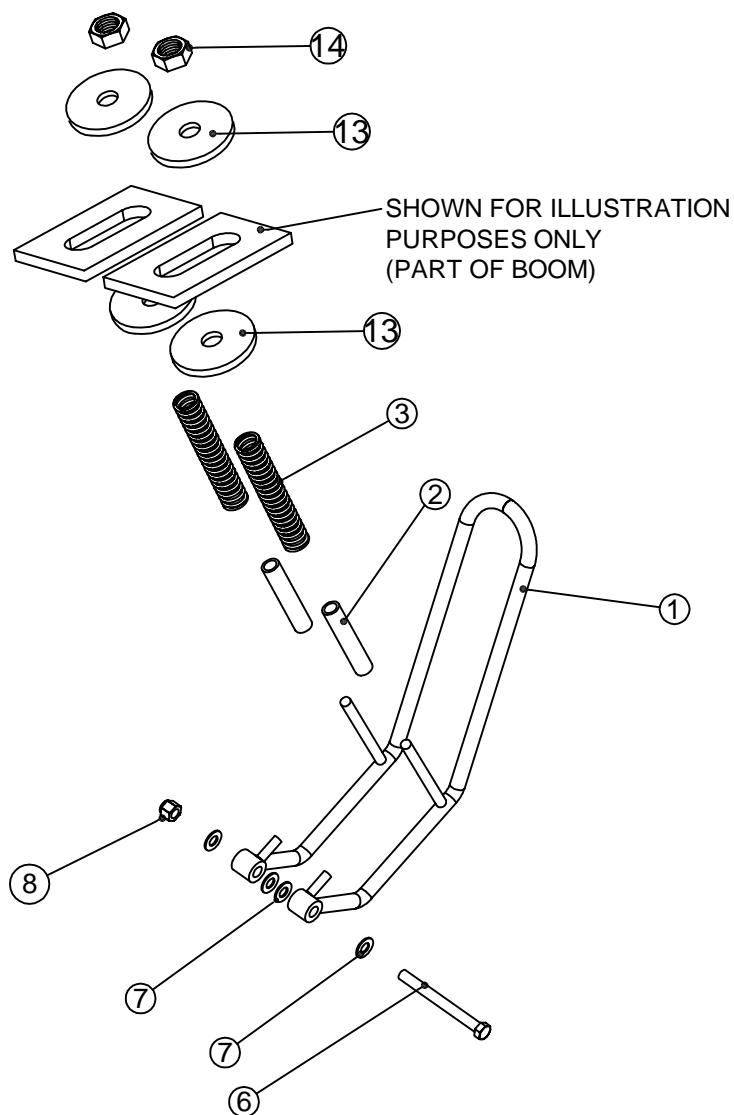
|      |     |                 |  |
|------|-----|-----------------|--|
| 33   | 2   | 23924           | SPACER; SHEAVES  |
| 32   | 8   | !CACS02520063-N | CNTR SNK ALLEN HEAD CAP SCREW; 1/4-20 X 5/8" LONG W/ PATCH     |
| 31   | 2   | 23217-10        | UHMW PAD; CONFIG. 'B', 3.19" X 1.75" X 0.63" THICK, 0.26" STEP |
| 30   | 2   | 23116           | PIN BLOCK, REINFORCING   |
| 29   | 2   | 21428           | BUSHING  |
| 28   | 1   | 21941           | PIN; EXTENSION CYLINDER  |
| 27   | 2   | 23217-7         | UHMW PAD; CONFIG. 'A', 3.19" X 1.50" X 0.44" THICK, 0.20" STEP |
| 26   | 2   | 23217-6         | UHMW PAD; CONFIG. 'A', 3.19" X 1.50" X 0.50" THICK, 0.20" STEP |
| 25   | 6   | !LWSH-038       | LOCK WASHER; 3/8"  |
| 24   | 6   | !HHCS03816075   | HEX HEAD CAP SCREW; 3/8-16 X 3/4" LONG, GR. 5 ZINC-PLTD        |
| 23   | 2   | 23217-3         | UHMW PAD; CONFIG. 'B', 3.19" X 2.13" X 0.44" THICK, 0.26" STEP |
| 22   | 2   | 23217-9         | UHMW PAD; CONFIG. 'A', 3.19" X 1.75" X 0.44" THICK, 0.26" STEP |
| 21   | 2   | 23217-8         | UHMW PAD; CONFIG. 'A', 3.19" X 1.75" X 0.50" THICK, 0.26" STEP |
| 20   | 2   | !ANUT-02520S    | ACORN NUT; 1/4-20  |
| 19   | 2   | 13459-2         | BOOM ARROW; 4-7/16" LONG                                       |
| 18   | 2   | 22490           | SPACER; BOOM ARROW, 1/2" O.D.                                  |
| 17   | 8   | !SRNG-075       | RETAINING RING; 3/4" SHAFT DIAMETER                            |
| 16   | 1   | !HHCS04414550   | HEX HEAD CAP SCREW; 7/16-14 X 5-1/2" LONG, GR. 5 ZINC-PLTD     |
| 15   | 2   | !LNUT-04414     | LOCK NUT; 7/16-14, NYLON INSERT                                |
| 14   | 1   | 21560           | ROLLER; UHMW GUIDE   |
| 13   | 1   | 21936           | FLAT MOUNT; WIRE ROPE GUIDE                                    |
| 12   | 1   | 21935           | WELDED ASS'Y; WIRE ROPE GUIDE                                  |
| 11   | 2   | !LNUT-07510     | LOCK NUT; 3/4-10   |
| 10   | 2   | 17059-6         | SHEAVE AXLE; 3/4" X 2" W/ SHANK                                |
| 9    | 2   | 27001           | SHEAVE; BOOM   |
| 8    | 2   | 23119           | BEARING RETAINING BLOCK  |
| 7    | 1   | 23183           | V-BLOCK SLIDER   |
| 6    | 2   | 21498           | ROLLER; EXTENSION CYLINDER                                     |
| 5    | 4   | 21497           | THRUST PIN; EXTENSION CYLINDER                                 |
| 4    | 1   | 21472           | WELDED ASS'Y; PRIMARY BOOM                                     |
| 3    | 1   | 21753           | EXTENSION CYLINDER   |
| 2    | 1   | 27167           | WELDED ASS'Y; TERTIARY BOOM                                    |
| 1    | 1   | 27165           | WELDED ASS'Y; SECONDARY BOOM                                   |
| ITEM | QTY | PART NO.        | DESCRIPTION  |

REFERENCE REPLACEMENT PARTS DRAWING #21088



VENCO VENTURO INDUSTRIES LLC  
CINCINNATI, OHIO

|                          |                         |         |
|--------------------------|-------------------------|---------|
| TITLE                    | DATE                    | SECTION |
| RPLCMNT PRTS LIST, 27197 | 03-08-17C               | C400    |
| ET25-36KX SERIES CRANES  | SUPERSEDES<br>12-20-11B | 21089   |



▲ FOR RT-HAND MNGT. USE CORD REEL P/N 27034-1

|          |      |                 |                                      |
|----------|------|-----------------|--------------------------------------|
| 17       | 2    | !LWSH-031       | LOCK WASHER 5/16 SPLIT               |
| 16       | 2    | !HHCS03118050-5 | HEX HEAD CAP SCREW 5/16-18 X 1/2"    |
| 15       | 1    | 22683           | CORD REEL W/MOUNTING BRACKET         |
| 14       | 2    | !LNUT-04414     | LOCKNUT W/NYLON INSERT - 7/16-14     |
| 13       | 4    | !FWSH-050       | FLAT WASHER -1/2 USS                 |
| ▲ 12     | 2    | !LWSH-#06-STAR  | EXTERNAL STAR LOCK - #6              |
| ▲ 11     | 2    | !PHCS#0632100   | PAN CAP SCREW - #6-32 X 1            |
| 10       | 2    | !LWSH-#10       | LOCK WASHER - #10                    |
| 9        | 2    | !PHCS#1024125   | PAN HD CAP SCREW - #10-24 X 1-1/2"   |
| 8        | 1    | !LNUTM12X175    | NYLOK NUT12MM-1.75                   |
| 7        | 4    | !FWSH-044SAE    | FLAT WASHER - 7/16 SAE               |
| 6        | 1    | !HHCSM12M120    | HEX HEAD CAP SCREW 12MM X 120MM LONG |
| 5        | 1    | 21237           | SWITCH HOUSING (BLACK CAST NYLON)    |
| 4        | 1    | 19376           | ANTI-TWO BLOCK SWITCH                |
| 3        | 2    | 27586           | SPRING                               |
| 2        | 2    | 27579b          | SPRING LOCATING TUBE                 |
| 1        | 1    | 21870           | ANTI TWO BLOCK CAGE ASSEMBLY         |
| ITEM NO. | QTY. | PART NUMBER     | DESCRIPTION                          |



VENCO VENTURO INDUSTRIES LLC  
CINCINNATI, OHIO

TITLE

RPLCMNT PARTS - LH CORD REEL (STNDRD)

DATE

02-03-15A

SECTION

C400

ET/HT25/30 & ET36 ANTI-2-BLOCK SYSTEM

SUPERSEDES

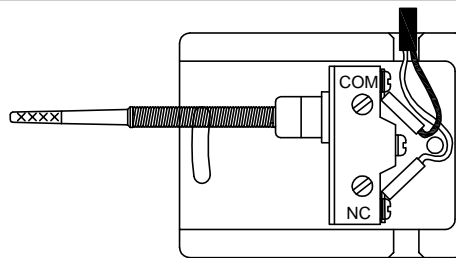
04-28-11

23026

### STEP 1

#### ANTI-TWO BLOCK (A2B) SWITCH WIRING

Connect the Black wire to the 'COM' (Common) terminal and the White wire to the 'NC' (Normally Closed) terminal. The center terminal is not used.



CUT-AWAY VIEW

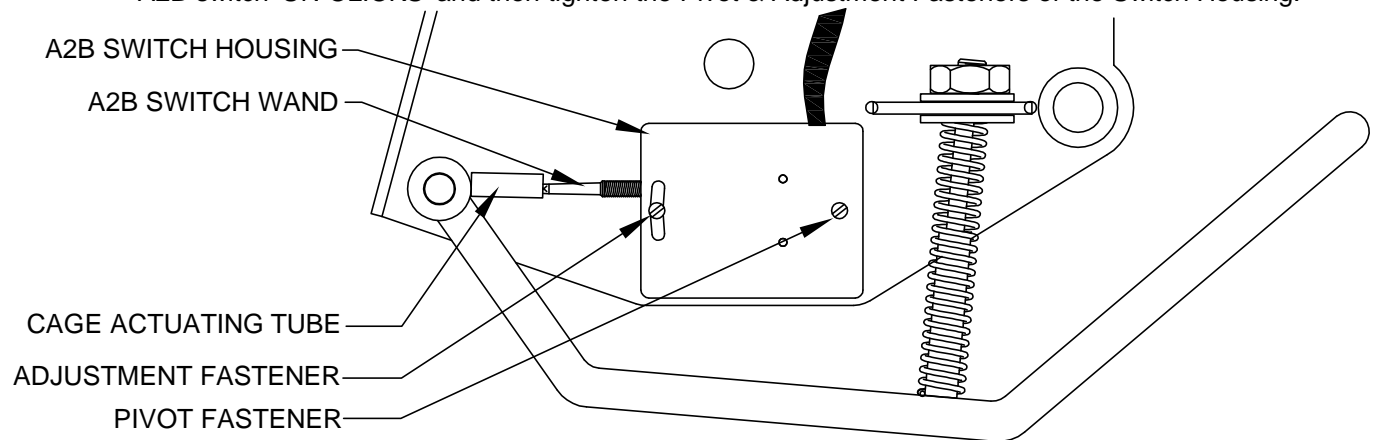
### STEP 2

#### ANTI-TWO BLOCK (A2B) SWITCH ADJUSTMENT

The A2B switch is adjusted by loosening the Pivot & Adjustment Fasteners of the A2B switch housing.

Once loosened the A2B switch and housing move freely pivoting on the 'Pivot Fastener' allowing the 'Switch Wand' to be adjusted to the 'Cage Actuating Tube'.

With the A2B Switch Wand inserted into the Cage Actuating Tube rotate the A2B switch housing Counter-Clockwise until you hear the 'click' of the A2B switch then rotate Clockwise 'just until' the A2B switch 'UN-CLICKS' and then tighten the Pivot & Adjustment Fasteners of the Switch Housing.

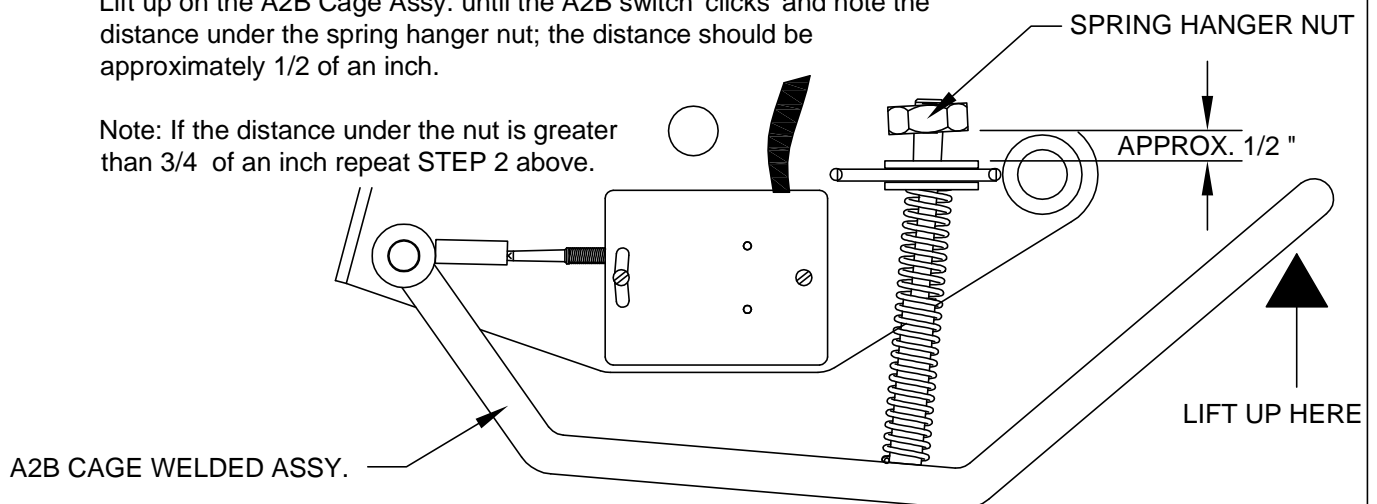


### STEP 3

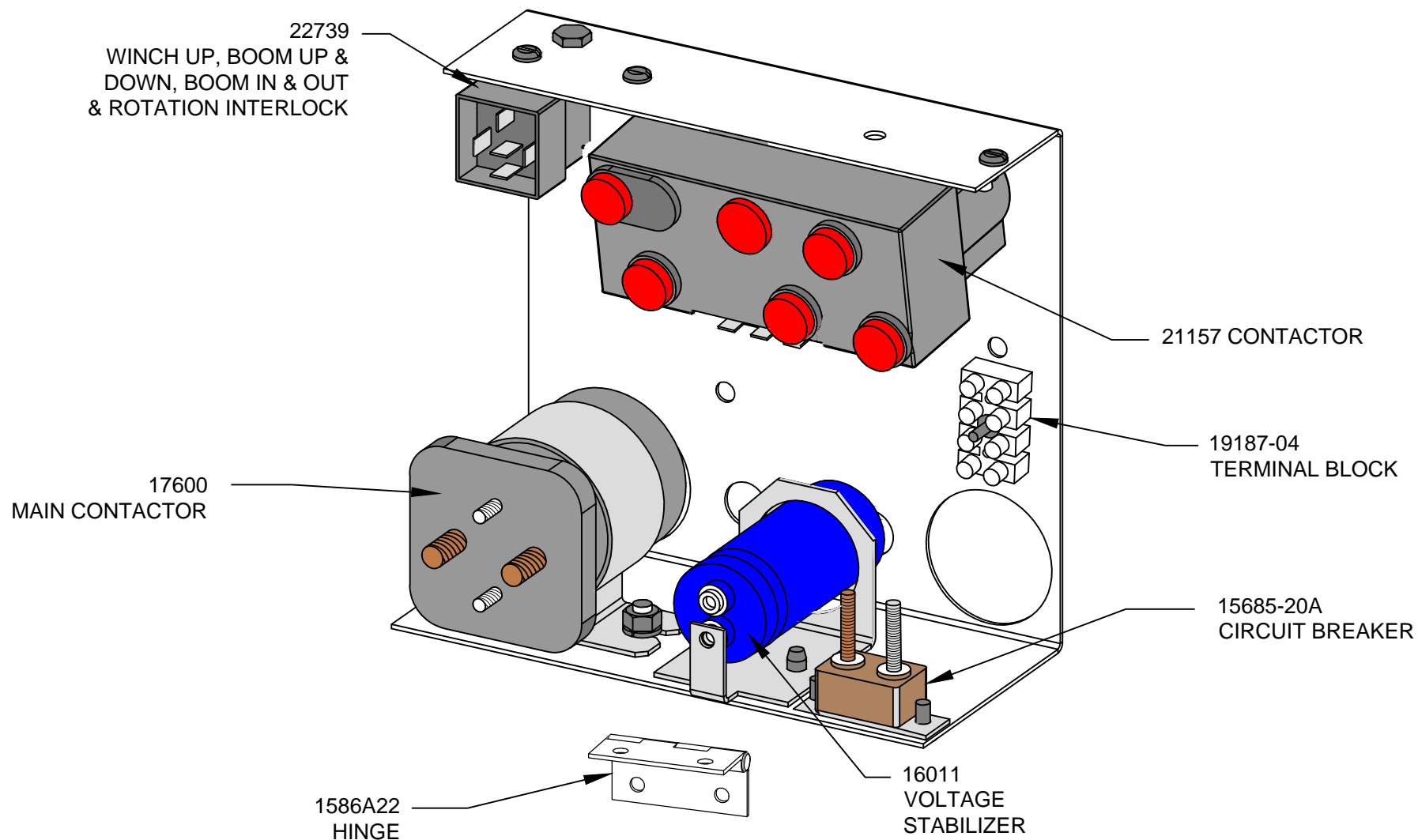
#### TESTING ADJUSTMENT

Lift up on the A2B Cage Assy. until the A2B switch 'clicks' and note the distance under the spring hanger nut; the distance should be approximately 1/2 of an inch.

Note: If the distance under the nut is greater than 3/4 of an inch repeat STEP 2 above.



# 23154-2 ELECTRICAL COMPONENT ASSEMBLY



VENCO VENTURO INDUSTRIES LLC  
CINCINNATI, OHIO

TITLE

23154-2 ELECTRICAL COMPONENT ASSY

ET25/30/36KX

DATE

02-19-20E

SUPERSEDES

02-10-20D

SECTION

C400

21776





# Single & 2-Pole Slip-ring Replacement Parts (1 of 2)

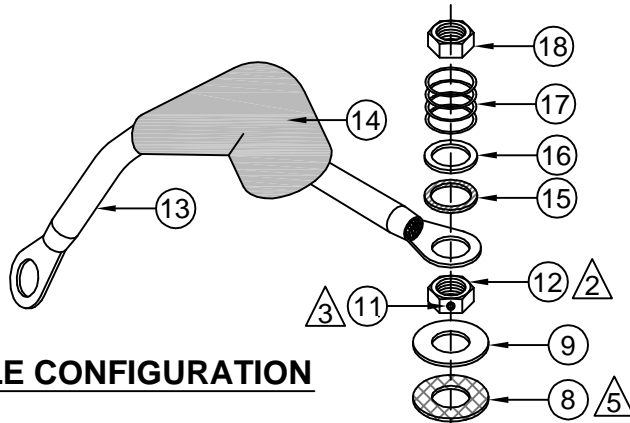
|                |                                     |  |   |  |             | 16780 BILLS OF MATERIALS |                 |  |
|----------------|-------------------------------------|--|---|--|-------------|--------------------------|-----------------|--|
| Quill Rotation | Slew Rotation Single Pole Slip-Ring | Slew Rotation 2-Pole Slip-Ring (ET6K ONLY) | Slew Rotation 2-Pole Slip-Ring (ET8-18KX) | Slew Rotation 2-Pole Slip-Ring (ET25-36KX) | ALL CRANES  |                          |                 |  |
| 16780          | 16780 - 1                           | 16780 - 2P6                                | 16780 - 2P8                               | 16780 - 2P25                               | 16780 - KIT |                          |                 |  |
| QTY            |                                     |  |   |  |             | #                        | PART            | DESCRIPTION                                      |
| 1              | 1                                   | 1  | 1   | 1  | -           | 1                        | 16783           | PIGTAIL AND STUD ASSEMBLY                        |
| 1              | 1                                   | 1  | 1   | 1  | 1           | 2                        | 12534-5         | ZINC BUSHING; 5/8" I.D. X 1" O.D. X 14 GAUGE     |
| 2              | 2                                   | 2  | 2   | 2  | 2           | 3                        | 14357-1         | FIBER WASHER; 5/8" I.D. X 1 1/16" O.D. X 1/16"   |
| 1              | 1                                   | 1  | 1   | 1  | 1           | 4                        | 14233           | INSULATING BUSHING; 5/8" I.D. X 7/8" O.D. X 7/8" |
| 1              | -                                   | -  | -   | -  | -           | 5                        | 14318           | FLAT WASHER; 1 3/16" I.D. X 2 3/4" O.D. X 3/16"  |
| 1              | -                                   | -  | -   | -  | -           | 6                        | 14232           | INVERTED FLARE NUT; 1 3/16"-16                   |
| -              | -                                   | -  | -   | -  | -           | 7                        | 27568           | WELDED ASSY. CANDLESTICK                         |
| 1              | 1                                   | 1  | 1   | 1  | 1           | 8                        | 14357-2         | FIBER WASHER; 5/8" I.D. X 1 1/4" O.D. X 1/16"    |
| 1              | 1                                   | 1  | 1   | 1  | 1           | 9                        | IFWSH-063SAE    | FLAT WASHER; 5/8" SAE                            |
| -              | 1                                   | -  | -   | -  | -           | 10                       | 27156           | RUBBER WATER SHIELD; 1/8" THICK                  |
| 1              | 1                                   | 1  | 1   | 1  | 1           | 11                       | ISHCS02528025KC | SET SCREW W/ KNURLED CUP; 1/4"-28 X 1/4"         |
| 1              | 1                                   | 1  | 1   | 1  | 1           | 12                       | 21273           | BRASS JAM NUT; 5/8"-11                           |
| -              | -                                   | -  | -   | -  | -           | 13                       | 26035-2         | PIGTAIL; SWIVEL TERMINAL                         |
| -              | -                                   | -  | -   | -  | -           | 14                       | 17012           | RUBBER BOOT; SWIVEL TERMINAL                     |
| 1              | 1                                   | 1  | 1   | 1  | 1           | 15                       | 5612-162-62     | TEFLON WASHER                                    |
| 1              | 1                                   | 1  | 1   | 1  | 1           | 16                       | 5714-113-62     | BRASS WASHER                                     |
| 1              | 1                                   | 1  | 1   | 1  | 1           | 17                       | LC-098K-00      | SPRING; 0.845" O.D. X 0.098" WIRE X 1.00 F.L.    |
| 1              | 1                                   | 1  | 1   | 1  | 1           | 18                       | !JNUT-06311N    | JAM NUT; 5/8"-11, NYLON NUT                      |
| 1              | 1                                   | 1  | 1   | 1  | 1           | 19                       | LOCTITE-24205   | REMOVABLE THREAD LOCKER; 0.5ML                   |
| 1              | 1                                   | 1  | 1   | 1  | 1           | 20                       | 19368           | IDWG; 16780 SWIVEL TERMINAL                      |
| -              | -                                   | 1  | -   | -  | -           | 21                       | 27456           | UHMW WATER SHIELD, (ET6K ONLY)                   |
| -              | -                                   | -  | 1   | 1  | -           | 22                       | 27456-1         | UHMW WATER SHIELD, (ET8 - ET36)                  |
| -              | -                                   | 1  | 1   | 1  | -           | 23                       | 27461           | SPRING, (-) SLIP-RING ASSY.                      |
| -              | -                                   | -  | 1   | 1  | -           | 24                       | 27441-1         | COPPER SLIP-RING, (ET8 - ET36)                   |
| -              | -                                   | 1  | -   | -  | -           | 25                       | 27441           | COPPER SLIP-RING, (ET6K ONLY)                    |
| -              | -                                   | 1  | 1   | 1  | -           | 26                       | 27449-1         | BRASS SLIP-RING (ET6 - ET36)                     |
| -              | -                                   | 1  | 1   | 1  | -           | 27                       | !HHCS03118075-B | BRASS HHCS                                       |
| -              | -                                   | 1  | 1   | 1  | -           | 28                       | !HNUT-03118-B   | BRASS NYLOC NUT                                  |
| -              | -                                   | 1  | -   | -  | -           | 29                       | 23255           | SLIP-RING, WELDED ASSY, ET6K                     |
| -              | -                                   | -  | 1   | -  | -           | 30                       | 23255-1         | SLIP-RING, WELDED ASSY, ET8 - 18K(X)             |
| -              | -                                   | -  | -   | 1  | -           | 31                       | 23255-2         | SLIP-RING, WELDED ASSY, ET25 - 36K(X)            |
| -              | -                                   | 1  | 1   | 1  | -           | 32                       | 02025-2*96.5INX | (-) WELDING CABLE ASSY, BRASS SLIP-RING          |
| -              | -                                   | 1  | 1   | 1  | -           | 33                       | 02025-2*22.5INX | (-) WELDING CABLE ASSY, COPPER SLIP-RING         |
| -              | -                                   | 1  | 1   | 1  | -           | 34                       | 27463           | SHIM, WIDE RIM, 18GA, 2-1/4 O.D. X 1-1/2 I.D.    |
| -              | -                                   | 1  | 1   | 1  | -           | 35                       | 20889           | RUBBER GROMMET                                   |
| -              | -                                   | 1  | 1   | 1  | -           | 36                       | !SRNG-150       | SNAP-RING, EXTERNAL, 1-1/2"                      |



VENCO VENTURO INDUSTRIES LLC  
CINCINNATI, OHIO

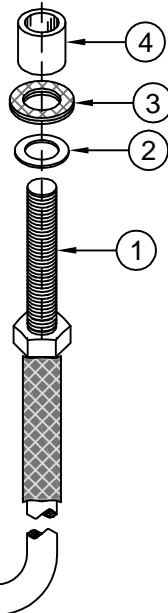
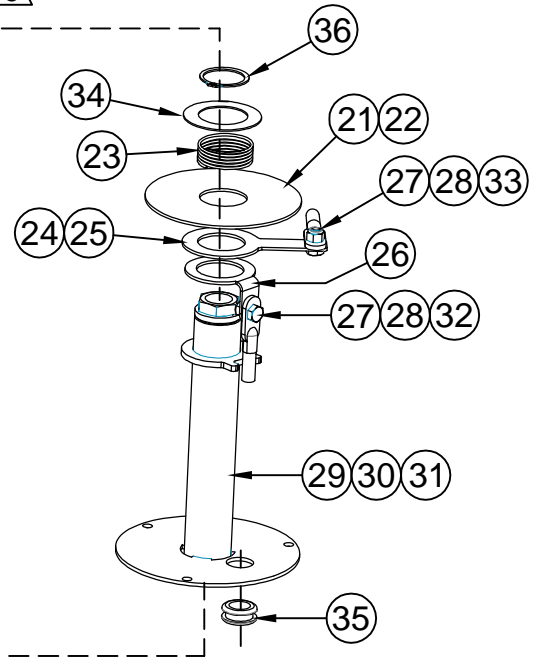
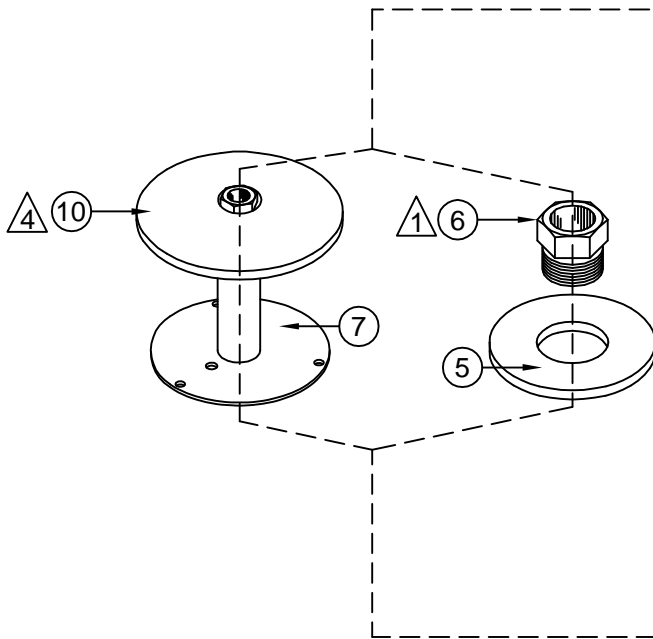
|                             |                        |         |
|-----------------------------|------------------------|---------|
| TITLE                       | DATE                   | SECTION |
| 16780 REPLACEMENT PARTS     | 03-29-19A              | C400    |
| ET6/8/12/16/18/25/30/36K(X) | SUPERSEDES<br>04-27-18 | 21292   |

# Single & 2-Pole Slip-ring Replacement Parts (2 of 2)



**SINGLE-POLE CONFIGURATION**

**2-POLE CONFIGURATION**



- 1 LOCTITE 242 BLUE  
& TORQUE TO 30 FT-LBS  
FOR QUILL APPLICATIONS
- 2 TORQUE TO 15 FT-LBS
- 3 LOCTITE 242 BLUE
- 4 STRETCH RUBBER WATER-SHED DISC  
P/N 27156 AROUND **'OUTSIDE'** OF THE  
INVERTED FLARE NUT OF  
CANDLESTICK, AS SHOWN
- 5 ITEM #8, FIBER WASHER, 5/8 I.D.  
**'MUST'** SIT DIRECTLY ON TOP OF THE  
INVERTED FLARE NUT ITEM #6.

THE 16780 SWIVEL TERMINAL CAN  
REPLACE & INTERCHANGE WITH  
THE 14231 SWIVEL TERMINAL, FOR  
ET20,000 & ET20K(X) CRANES.



VENCO VENTURO INDUSTRIES LLC  
CINCINNATI, OHIO

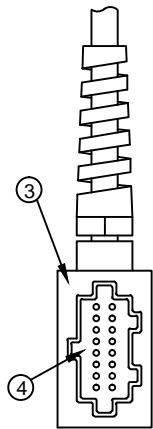
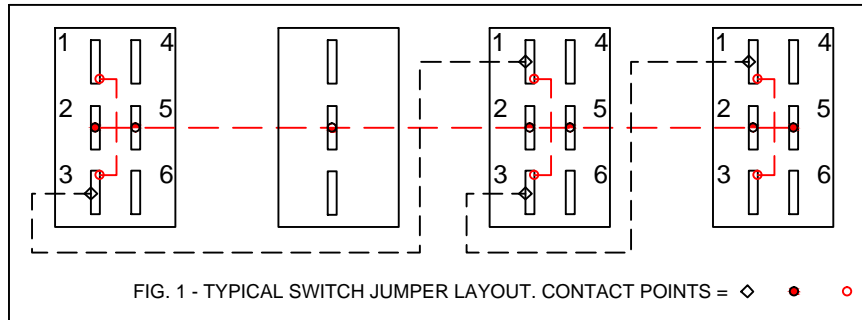
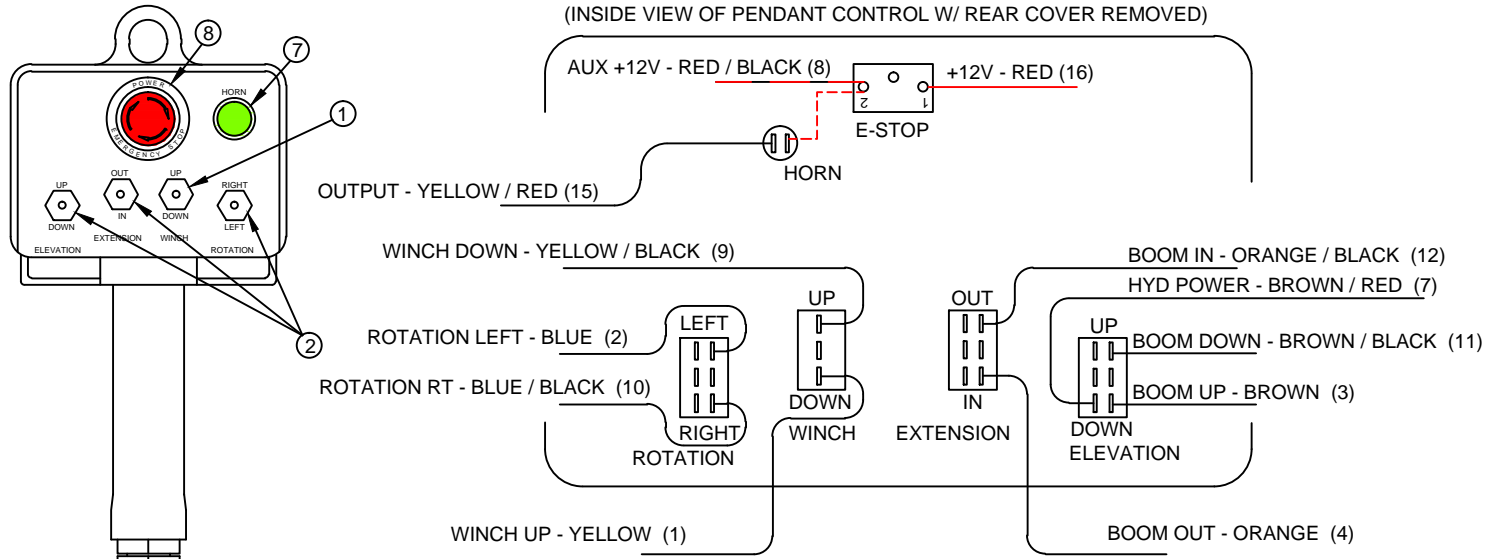
TITLE  
REPL. PARTS ILLUSTRATION  
ET6/8/12/16/18/25/30/36K(X)

DATE  
04-27-18  
SUPERSEDES  
-

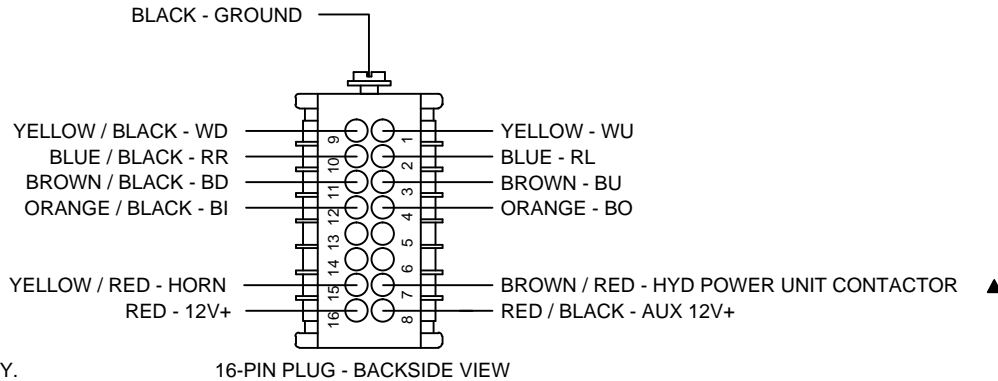
SECTION  
C400  
21293



# 21990 PENDANT; 4 FUNCTION ET CRANES, E-STOP / HORN



16-PIN PLUG ASSY.



16-PIN PLUG - BACKSIDE VIEW

NOTE 1:  
WIRE TERMINALS TO BE INSTALLED 'AFTER'  
ROUTING REPLACEMENT CORD ASSY  
THROUGH PENDANT HEAD AND PLUG  
HOUSING.

NOTE 2:  
STOW OR CUT BACK UNUSED WIRES.

| MODEL   | STARTING S/N |
|---------|--------------|
| ET8KX   | 73800        |
| ET12KX  | 69800        |
| ET16KX  | 170000       |
| ET18KX  | 95900        |
| ET25KX  | 125300       |
| ET30KX  | 130300       |
| ET36KXX | 140300       |

| ITEM | QTY | PART NO. | DESCRIPTION                |
|------|-----|----------|----------------------------|
| 8    | 1   | 22156    | SWITCH; E-STOP             |
| 7    | 1   | 22155    | SWITCH; PUSHBUTTON, HORN   |
| 6    | 1   | 22135    | KIT; REPLACEMENT CORD ASSY |
| 5    | -   | -        | -                          |
| 4    | 1   | 22472    | INSERT; MALE, 16 + 1 POLE  |
| 3    | 1   | 22471    | PLUG CASE; 16 + 1 POLE     |
| 2    | 3   | 22152    | SWITCH; DPDT, MOMENTARY    |
| 1    | 1   | 22081    | SWITCH; SPDT, MOMENTARY    |



VENCO VENTURO INDUSTRIES LLC  
CINCINNATI, OHIO

## REPLACEMENT PARTS DWG & LIST

21990 PNDNT; 4 FNCTN ET CRNS, ESTP/HRN

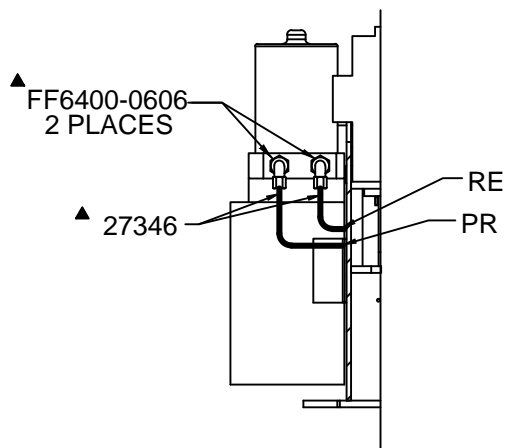
DATE  
01-12-17B

SUPSEDES  
10-20-14A

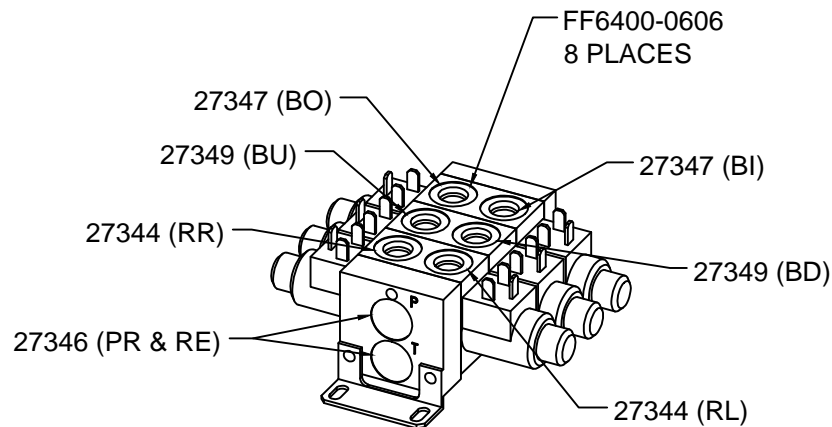
SECTION  
C400

23075

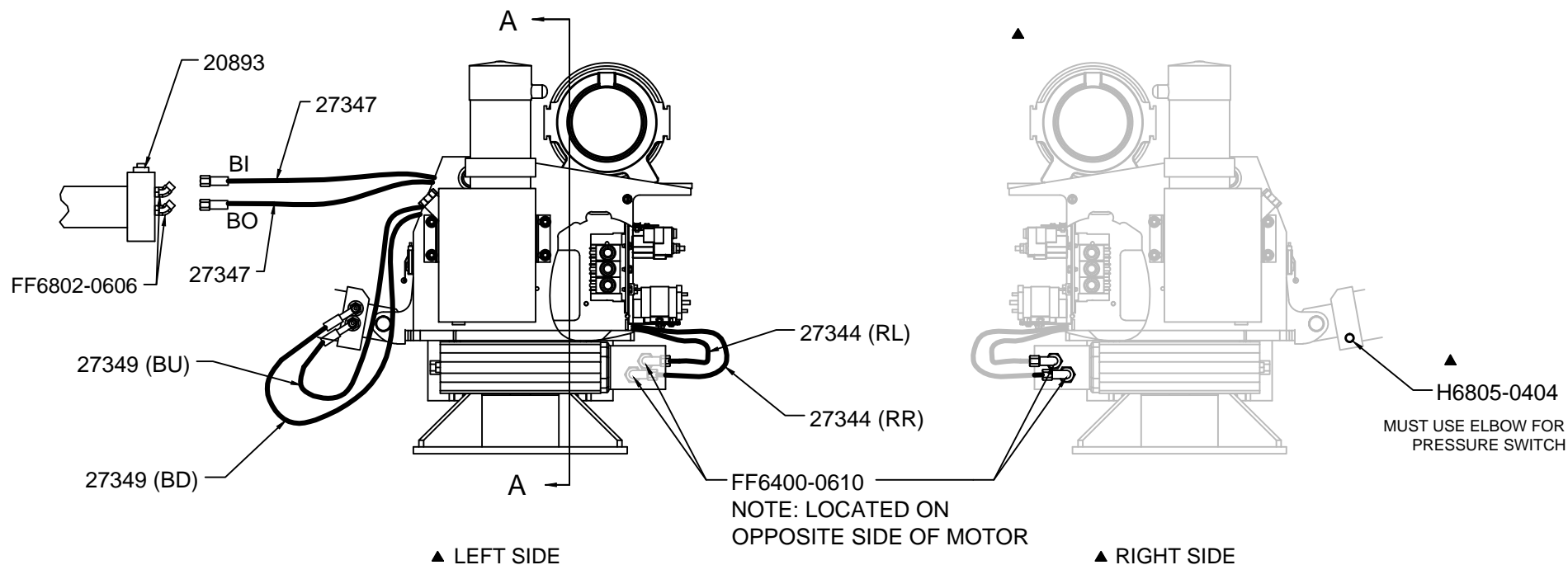
|    |                |
|----|----------------|
| RR | ROTATION RIGHT |
| RL | ROTATION LEFT  |
| BO | BOOM OUT       |
| BI | BOOM IN        |
| BU | BOOM UP        |
| BD | BOOM DOWN      |
| PR | PRESSURE       |
| RE | RETURN         |



SECTION VIEW A-A



NOTE:  
FOR REPLACEMENT  
COILS SEE P/N 23134

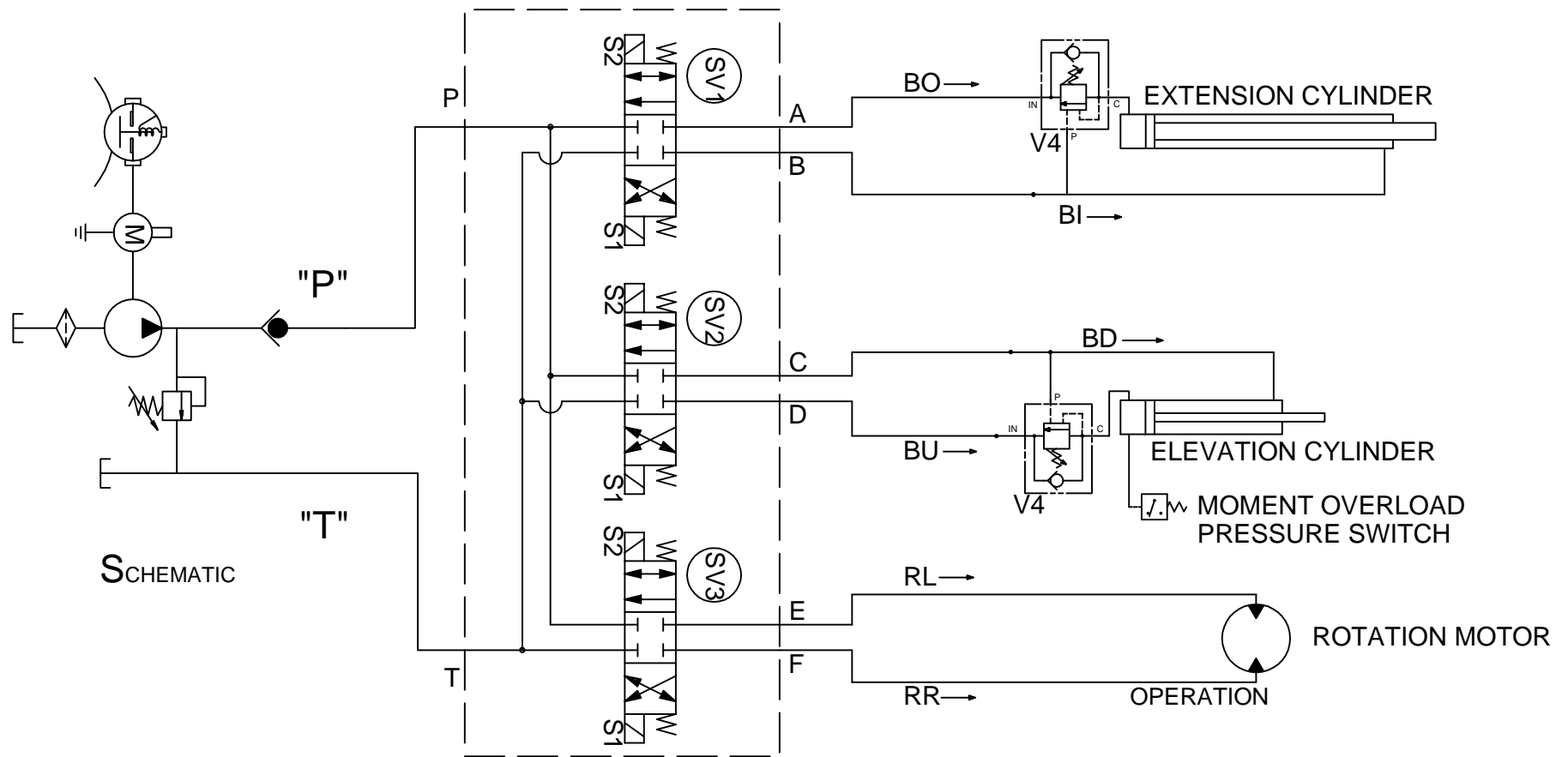


VENCO VENTURO INDUSTRIES LLC  
CINCINNATI, OHIO

|              |                                    |
|--------------|------------------------------------|
| TITLE        | REPLACEMENT PARTS; HYD. COMPONENTS |
| ET25/30/36KX |                                    |

|            |           |         |       |
|------------|-----------|---------|-------|
| DATE       | 02-10-20E | SECTION | C400  |
| SUPERSEDES | 10-07-19D |         | 21758 |

# ET16/18/25/30/36KX HYDRAULIC COMPONENT DIAGRAM



| SV1           | SV2           | SV3           |
|---------------|---------------|---------------|
| ENERGIZE "S2" | ENERGIZE "S2" | ENERGIZE "S2" |
| OPEN FLOW     | OPEN FLOW     | OPEN FLOW     |
| 'P' TO 'A'    | 'P' TO 'C'    | 'P' TO 'E'    |
| 'B' TO 'T'    | 'D' TO 'T'    | 'F' TO 'T'    |
| ENERGIZE "S1" | ENERGIZE "S1" | ENERGIZE "S1" |
| OPEN FLOW     | OPEN FLOW     | OPEN FLOW     |
| 'P' TO 'B'    | 'P' TO 'D'    | 'P' TO 'F'    |
| 'A' TO 'T'    | 'C' TO 'T'    | 'E' TO 'T'    |



VENCO VENTURO INDUSTRIES LLC  
CINCINNATI, OHIO

TITLE

HYDRAULIC SYSTEM DIAGRAM

ET16/18/25/30/36KX ▲

DATE

10-23-14D

SUPERSEDES

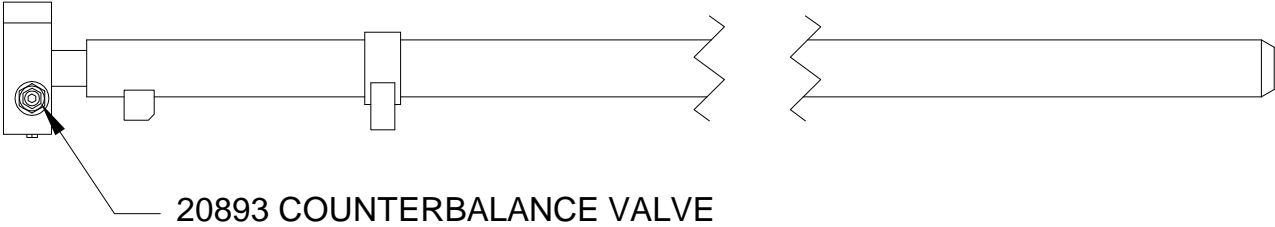
01-31-05C

SECTION

C400

20156

# 20061 EXTENSION CYLINDER



SEAL KIT P/N: 19887



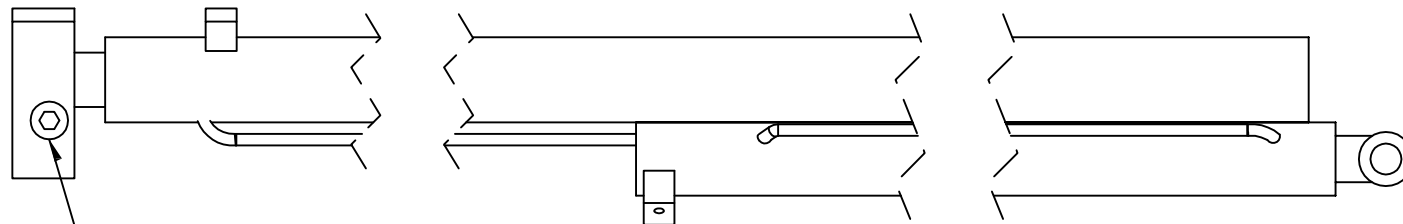
MANUFACTURING, INC.  
CINCINNATI, OHIO

TITLE  
EXTENSION CYLINDER  
ET/HT25/30KX

DATE  
01-07-14A  
SUPERSEDES  
08-20-09

SECTION  
C400  
21879

# 21753 DUAL-STAGE EXTENSION CYLINDER



20893 - COUNTERBALANCE VALVE

SEAL KIT P/N: 21775



VENCO VENTURO INDUSTRIES LLC  
CINCINNATI, OHIO

TITLE

EXTENSION CYLINDER, DUAL-STAGE

ET25-36KX & HT25/30 SERIES CRANES

DATE

03-08-17B

SUPERSEDES

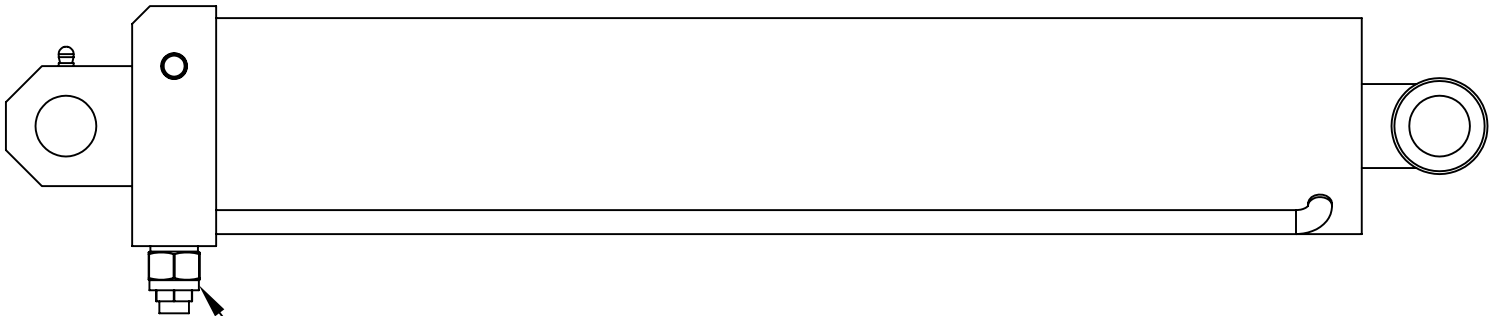
04-30-09A

SECTION

C400

21860

# 21752 ELEVATION CYLINDER



**20893 COUNTERBALANCE  
VALVE**

**SEAL KIT P/N: 21774**



MANUFACTURING, INC.  
CINCINNATI, OHIO

TITLE  
**ELEVATION CYLINDER**

**ET/HT25/30/36KX(X)**

DATE  
**8-12-09**

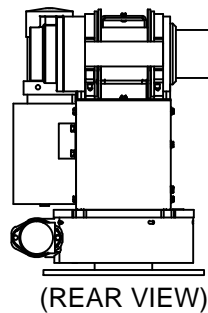
SUPERSEDES  
**-**

SECTION  
**C400**

**21773**

# 19813 WINCH REPLACEMENT PARTS

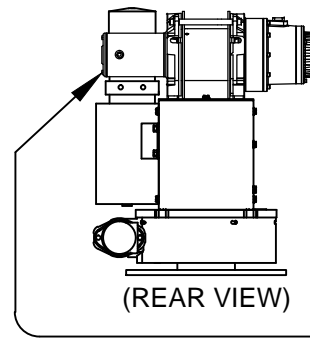
## WARN DC3000 SERIES-WOUND MOTOR



MOTOR ON RIGHT  
WHEN VIEWED FROM REAR

(REAR VIEW)

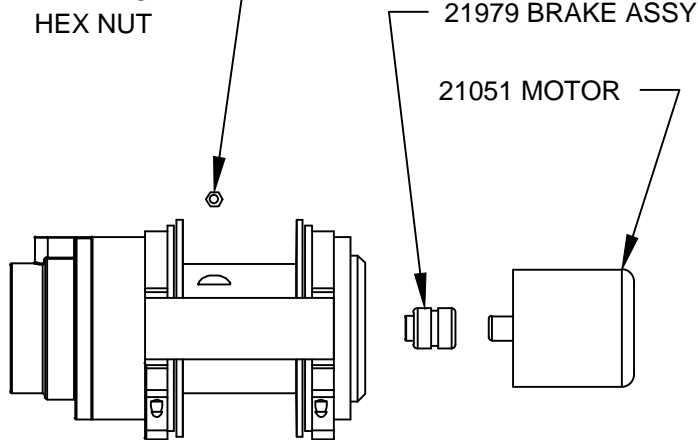
## COMEUP GTD-3300 PERMANENT MAGNET MOTOR



MOTOR ON LEFT  
WHEN VIEWED FROM REAR

(REAR VIEW)

!HNUT-04414 HEX NUT  
(WIRE ROPE ANCHOR)  
OR EQUIVALENT METRIC  
HEX NUT



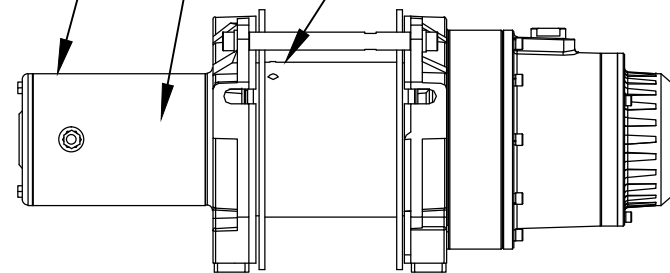
21979 BRAKE ASSY

21051 MOTOR

23915 MOTOR

23918 BRAKE REPLACEMENT KIT

2X SET SCREW  
(INCL W/ WINCH)



STARTING SERIAL NUMBERS:

|             |           |
|-------------|-----------|
| ET25 SERIES | 22D000003 |
| ET30 SERIES | 21B000001 |
| ET36 SERIES | 20B000014 |



VENCO VENTURO INDUSTRIES LLC  
CINCINNATI, OHIO

TITLE

WINCH REPLACEMENT PARTS

ET25/30/36K

DATE

04-26-22E

SUPSEDES

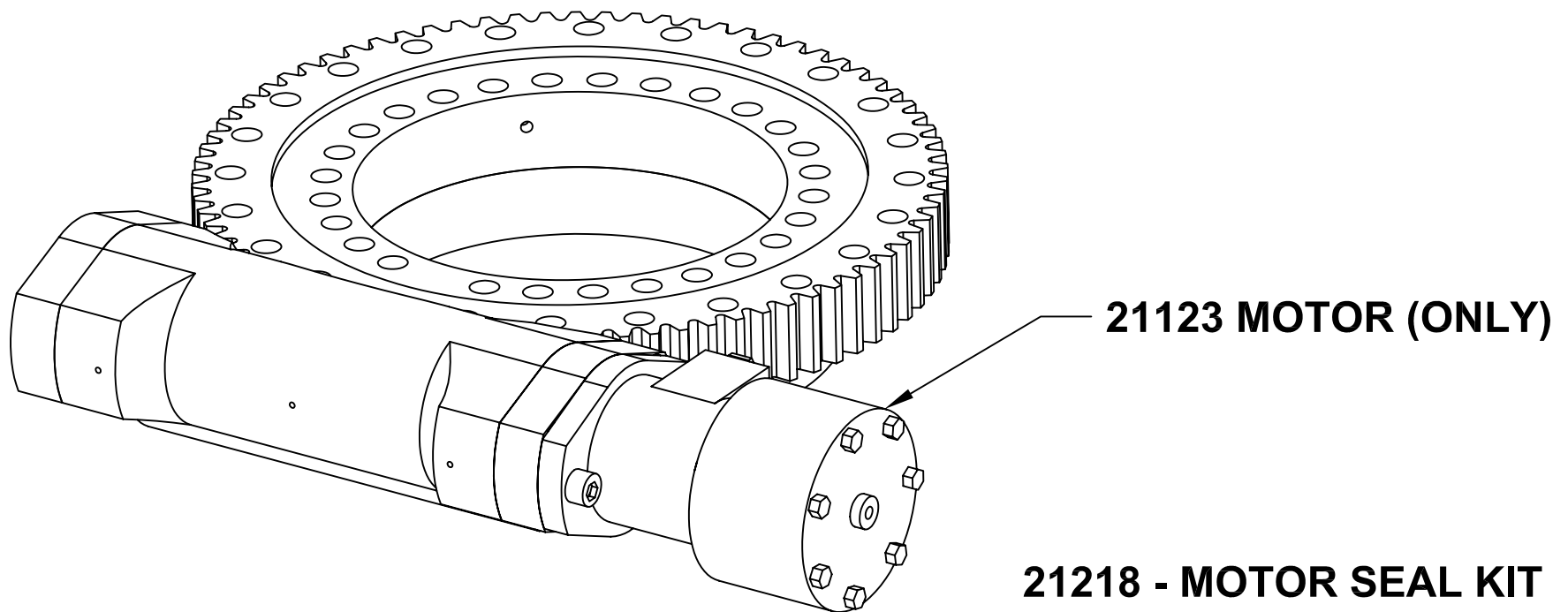
04-13-22D

SECTION

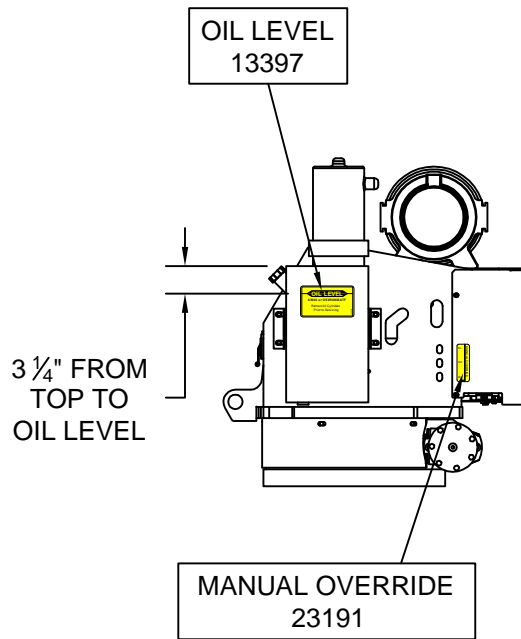
C400

21053

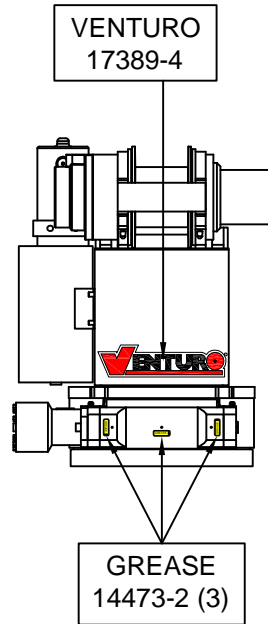
# 21418 SLEWING SYSTEM REPLACEMENT PARTS



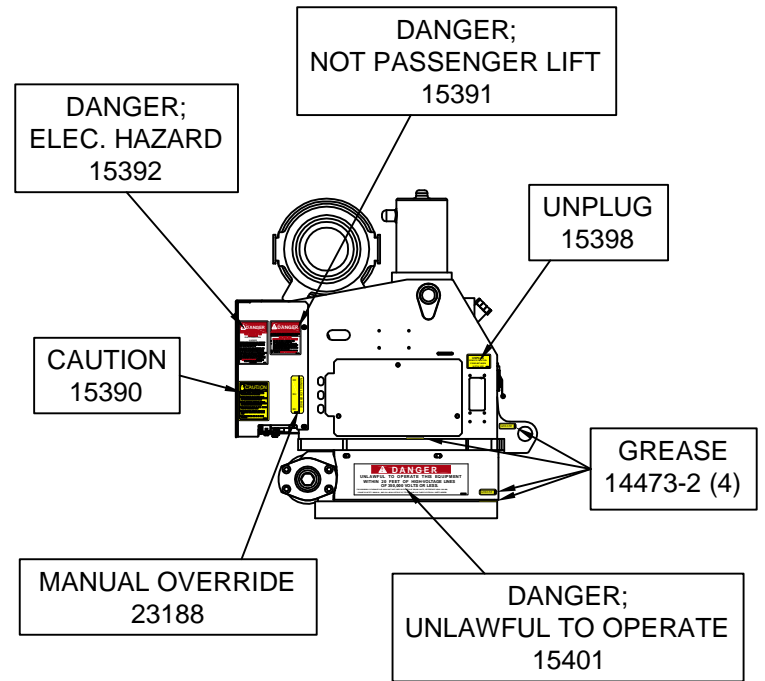




**LEFT**



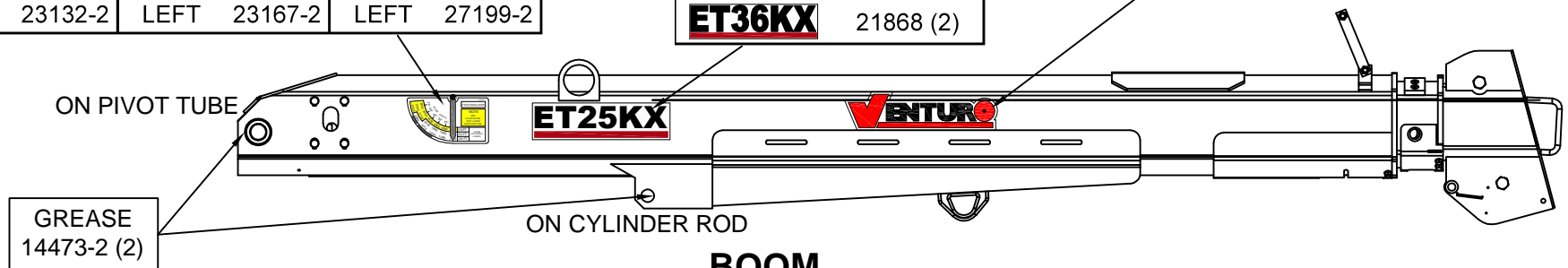
**BACK**



**RIGHT**

| CAPACITY |         |        |         |        |         |
|----------|---------|--------|---------|--------|---------|
| ET25KX   |         | ET30KX |         | ET36KX |         |
| RIGHT    | 23132-1 | RIGHT  | 23167-1 | RIGHT  | 27199-1 |
| LEFT     | 23132-2 | LEFT   | 23167-2 | LEFT   | 27199-2 |

| MODEL         |           |
|---------------|-----------|
| <b>ET25KX</b> | 19743 (2) |
| <b>ET30KX</b> | 23168 (2) |
| <b>ET36KX</b> | 21868 (2) |



**BOOM**



VENCO VENTURO INDUSTRIES LLC  
CINCINNATI, OHIO

TITLE  
**DECAL PLACEMENT**  
  
ET25/30/36KX

DATE  
05-19-15D  
  
SUPERSEDES  
08-08-12C

SECTION  
C400  
  
**21894**

# ET25/30/36KX FIELD SERVICE LABEL KITS

21898; FIELD SERVICE LABEL KIT, ET25KX

| PART NO.   | QTY. | DESCRIPTION                            |
|------------|------|--|
| 14473-2    | 9    | DECAL; GREASE                          |
| 17389      | 2    | DECAL; VENTURO, MEDIUM                 |
| 17389-4    | 1    | DECAL; VENTURO, SMALL                  |
| 23132-1    | 1    | DECAL; BOOM CAPACITY, RIGHT, ET/HT25KX |
| 23132-2    | 1    | DECAL; BOOM CAPACITY, LEFT, ET/HT25KX  |
| 19743      | 2    | DECAL; MODEL NAME, ET25KX              |
| 13397      | 1    | DECAL; OIL LEVEL                       |
| 23188      | 1    | DECAL; MANUAL OVERRIDE, RIGHT          |
| 23191      | 1    | DECAL; MANUAL OVERRIDE, LEFT           |
| 17813      | 1    | DECAL; OVERLOAD SENSING SYSTEM         |
| 16184-1    | 1    | DECAL; HORN RELAY                      |
| 21899      | 1    | IDWG; FIELD SERVICE LABEL KIT          |
| 21894      | 1    | IDWG; DECAL PLACEMENT                  |
| INST-23233 | 1    | SAFETY MANUAL, VENTURO CRANES          |
| 15397      | 1    | KIT; ACCIDENT PREVENTION SIGNS         |

21863; FIELD SERVICE LABEL KIT, ET30KX

| PART NO.   | QTY. | DESCRIPTION                         |
|------------|------|-------------------------------------|
| 14473-2    | 9    | DECAL; GREASE                       |
| 17389      | 2    | DECAL; VENTURO LOGO, MEDIUM         |
| 17389-4    | 1    | DECAL; VENTURO LOGO, SMALL          |
| 23167-1    | 1    | DECAL; BOOM CAPACITY, RIGHT, ET30KX |
| 23167-2    | 1    | DECAL; BOOM CAPACITY, LEFT, ET30KX  |
| 23168      | 2    | DECAL; MODEL NAME, ET30KX           |
| 13397      | 1    | DECAL; OIL LEVEL                    |
| 23188      | 1    | DECAL; MANUAL OVERRIDE, RIGHT       |
| 23191      | 1    | DECAL; MANUAL OVERRIDE, LEFT        |
| 17813      | 1    | DECAL; OVERLOAD SENSING SYSTEM      |
| 16184-1    | 1    | DECAL; HORN RELAY                   |
| 21899      | 1    | IDWG; FIELD SERVICE LABEL KIT LIST  |
| 21894      | 1    | IDWG; DECAL PLACEMENT               |
| INST-23233 | 1    | SAFETY MANUAL, VENTURO CRANES       |
| 15397      | 1    | KIT; ACCIDENT PREVENTION SIGNS      |

21866; FIELD SERVICE LABEL KIT, ET36KX

| PART NO.   | QTY. | DESCRIPTION                         |
|------------|------|-------------------------------------|
| 14473-2    | 9    | DECAL; GREASE                       |
| 17389      | 2    | DECAL; VENTURO LOGO, MEDIUM         |
| 17389-4    | 1    | DECAL; VENTURO LOGO, SMALL          |
| 27199-1    | 1    | DECAL; BOOM CAPACITY, RIGHT, ET36KX |
| 27199-2    | 1    | DECAL; BOOM CAPACITY, LEFT, ET36KX  |
| 21868      | 2    | DECAL; MODEL NAME, ET36KX           |
| 13397      | 1    | DECAL; OIL LEVEL                    |
| 23188      | 1    | DECAL; MANUAL OVERRIDE, RIGHT       |
| 23191      | 1    | DECAL; MANUAL OVERRIDE, LEFT        |
| 17813      | 1    | DECAL; OVERLOAD SENSING SYSTEM      |
| 16184-1    | 1    | DECAL; HORN RELAY                   |
| 21899      | 1    | IDWG; FIELD SERVICE LABEL KIT LIST  |
| 21894      | 1    | IDWG; DECAL PLACEMENT               |
| INST-23233 | 1    | SAFETY MANUAL, VENTURO CRANES       |
| 15397      | 1    | KIT; ACCIDENT PREVENTION SIGNS      |



VENCO VENTURO INDUSTRIES LLC  
CINCINNATI, OHIO

TITLE

FIELD SERVICE LABEL KIT

ET25/30/36KX

DATE

03-13-23F

SUPERSEDES

08-04-20E

SECTION

C400

21899





# VENTURO CRANES LIMITED WARRANTY POLICY

Venturo products are built to last...we guarantee them.

As a purchaser of any new Venturo product covered by warranty, you will receive 1 year of the most complete coverage available...and, at no added cost to you.

## 1-Year Limited Warranty Policy

This limited policy warrants new products of Venturo to be free from defects in material and workmanship for a period of one (1) year from date of original installation. OEM products or accessories purchased by Venturo as part of or offered with our product will carry the OEM manufacturer's respective warranty. Our warranty covers:

- ***Repair or replacement of product***
- ***Labor to repair or replace product***
- ***Freight to return and/or replace product***

We shall not be liable for any contingent liabilities arising out of the improper function of any products. Warranty shall become void if the product is improperly installed, modified, damaged, abused or used for application other than intended use. There is no warranty of merchantability, fitness for a particular purpose, warranty arising from course of dealing or usage of trade, or any other implied or expressed warranty, except as made specifically herein. This warranty supersedes all previous warranties, written or implied.

## Warranty Claims

Venco Venturo Industries LLC will make a good faith effort for prompt correction or other adjustment with respect to any product, which proves to be defective after our inspection and within the warranty period. Before any repairs are attempted or before returning any product, your Venturo Distributor is required to obtain a warranty claim number. This number is necessary for any claim to be considered. To obtain a warranty claim number, Venturo requires the model and serial number. Only authorized Venturo Distributors can perform warranty. For the name and address of your local Venturo Distributor call the **Warranty Claim Department - 513-772-8448**.

**WARNING** - It is the responsibility of the installer to ensure the installation is completed according to the manufacturer's recommendations, ensure the ultimate user understands how to operate product in a safe manner, and understands the need for regular service and maintenance by an authorized Venturo Distributor. No modifications or alterations may be made to any Venturo product without the expressed written consent of Venco Venturo Industries LLC. Installation of any Venturo product must be done by an authorized Venturo Distributor, to the standards of the industry; including maintenance, service and affixing of all instruction, safety and warning decals. Users should be instructed as to the safe operation at time of delivery. Maintenance, service, operation and safety warning decals are available on request from Venco Venturo Industries LLC.

**VENCO VENTURO INDUSTRIES LLC**  
12110 BEST PLACE | CINCINNATI, OHIO 45241  
P: 800-226-2238 | F: 513-326-5427  
[www.venturo.com](http://www.venturo.com)