

PARTS & INSTALLATION MANUAL

25100-PHX (E) (-LC)

Included in this manual:

25100-PHX (E) (-LC)

- Stabilizer with Hydraulic Pullout and Hydraulic Legs
- Available in “Less Crosstube” (-LC) configuration
- Available with Hydraulic Power Unit (E)

VENCO VENTURO INDUSTRIES LLC
12110 BEST PLACE | CINCINNATI, OHIO 45241
800-226-2238



This manual also available online at www.venturo.com.

25100-PHX(-LC)

INST-25440 - 11/14/2025 (Rev: C1)

7607200A	SECTION 200: INSTALLATION
25480	INSTALLATION GUIDELINES
25488	ISOMETRIC VIEW - SHORT LEG
25489	OVERALL DIMENSIONS - SHORT LEG
25490	OVERALL DIMENSIONS - LONG LEG
25484-2	RECOMMENDED MOUNTING TO TRUCK FRAME
25448	SMALL PARTS IMAGE
25447-1	SELECTOR VALVE OVERVIEW
25446	HYDRAULIC MAPPING - 1 OF 2
25449	HYDRAULIC MAPPING - 2 OF 2
25485	DEPARTURE ANGLE, REAR-MOUNTED STABILIZERS
25428-2	MOUNTING THE LEGS
25443	LESS-CROSSTUBE ASSY - 1 OF 3
25444	LESS-CROSSTUBE ASSY - 2 OF 3
25445	LESS-CROSSTUBE ASSY - 3 OF 3
7607300B	SECTION 300: OPERATION
30035	25100 PHX (E) OPERATION
7607400A	SECTION 400: REPLACEMENT PARTS
25442	25100-PHX REPLACEMENT PARTS LIST
25441	25100-PHX REPLACEMENT PARTS DRAWING
25451	PULLOUT REPLACEMENT PARTS LIST
25450	PULLOUT REPLACEMENT PARTS DRAWING
25452	LEG REPLACEMENT PARTS LIST
25453	LEG REPLACEMENT PARTS DRAWING
25478	25477-1 PHXE KIT
23935	26489 HYD UNIT REPLACEMENT PARTS
25216	REPLACEMENT PARTS
12-00073_VNT1	WARRANTY PAGE

SECTION 200

INSTALLATION



VENCO VENTURO INDUSTRIES LLC
CINCINNATI, OHIO

STABILIZER INSTALLATION GUIDELINES

Read instructions completely prior to starting installation. If this unit is to be installed on a Venturo crane body, continue to the stabilizer assembly section of this manual.

Prior to mounting the stabilizer crosstube, orient the stabilizer so the longer pullout is on the crane side of the truck.

REAR MOUNTED

Crosstube should be centered at the rear of the truck and tied into the truck frame, body longills, and crane support. Installer is responsible for proper mounting brackets and hardware that will be needed during this process. If unit is to be mounted on a service body, do not attach crosstube to body sheet metal unless otherwise specified. Allow clearance between crosstube and body for the stabilizer legs to be fully retracted. Consult chassis up-fitter guide prior to installation for proper welding and bolting procedures to chassis.

See the 'RECOMMENDED MOUNTING TO TRUCK FRAME' page

Leg installation (refer to assembly section of manual) legs are adjustable to maintain proper ground penetration of 4" to 6". The stabilizer is designed to level the truck and not lift the chassis off of the ground. They are designed to work in conjunction with the chassis suspension to stabilize the unit with the bulk of the load being supported by the chassis suspension and tires. Tires must be set at the proper pressure according to the chassis manufacture, stabilizers fully extended, and legs deployed on firm, level ground prior to crane use.

IMPORTANT - When legs are fully retracted in the stowed position, a 15° degree departure angle between the bottom of the rear tire and the lowest point of the stabilizer is recommended.

See the 'DEPARTURE ANGLE' page

For hydraulic stabilizers, the control valve and selector valve are supplied in kit. It is the installer's responsibility to supply necessary hoses and fittings between these valves and stabilizer. Refer to proper hydraulic schematic for your particular stabilizer model.

IMPORTANT - The selector valve is designed to separate the crane and stabilizer hydraulic circuits. This will not allow stabilizer use while in crane mode.

FRONT MOUNTED

Front mounted crosstube will be located on top of the chassis frame and welded to body longills. Additional shear plates (installer supplied) to be welded to crosstube and bolted to chassis frame. Crosstube to be spaced away from body for leg clearance when fully retracted. See assembly section of manual for pullout and leg installation detail.



VENCO VENTURO INDUSTRIES LLC
CINCINNATI, OHIO

INSTALLATION GUIDELINES

STABILIZERS

DATE

12-08-23A

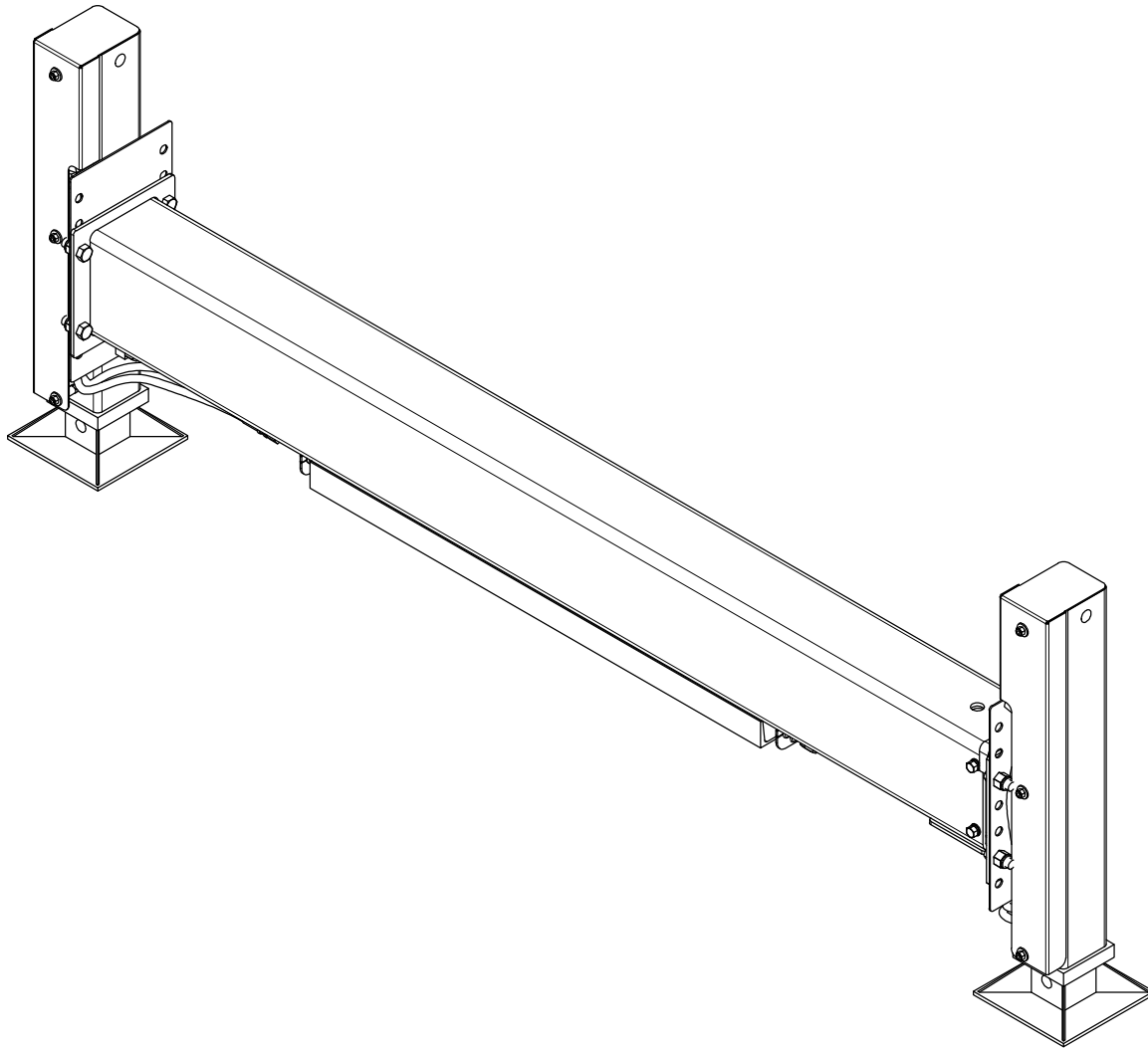
SUPERSEDES

01-17-17

SECTION

C200

25480



VENCO VENTURO INDUSTRIES LLC
CINCINNATI, OHIO

ISOMETRIC VIEW

25100-PHX OUTRIGGER (WITH SHORT LEGS)

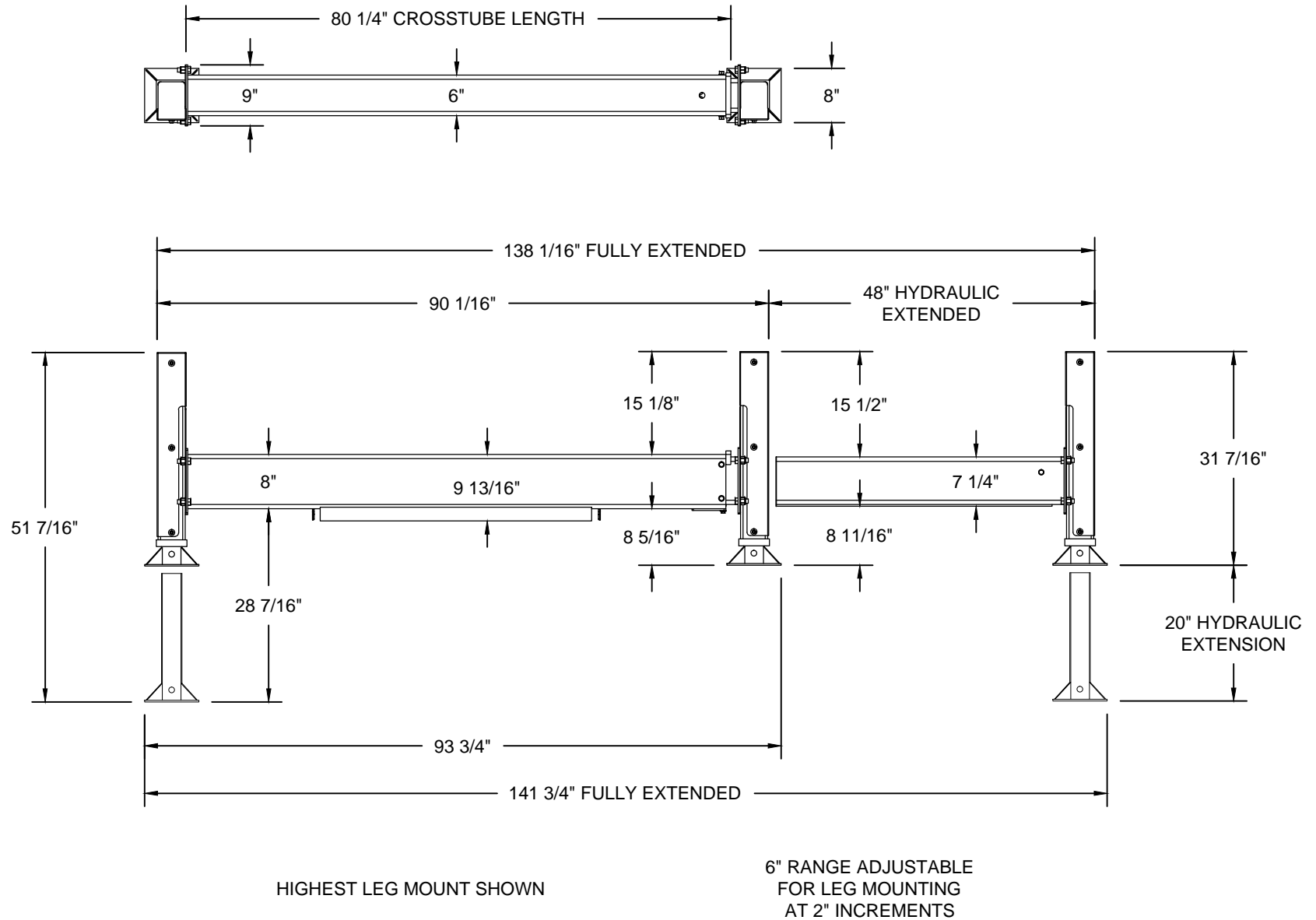
DATE
01-20-17

SUPERSEDES
-

PAGE

02

25488



VENCO VENTURO INDUSTRIES LLC
CINCINNATI, OHIO

OVERALL DIMENSIONS

25100-PHX OUTRIGGER WITH SHORT LEGS

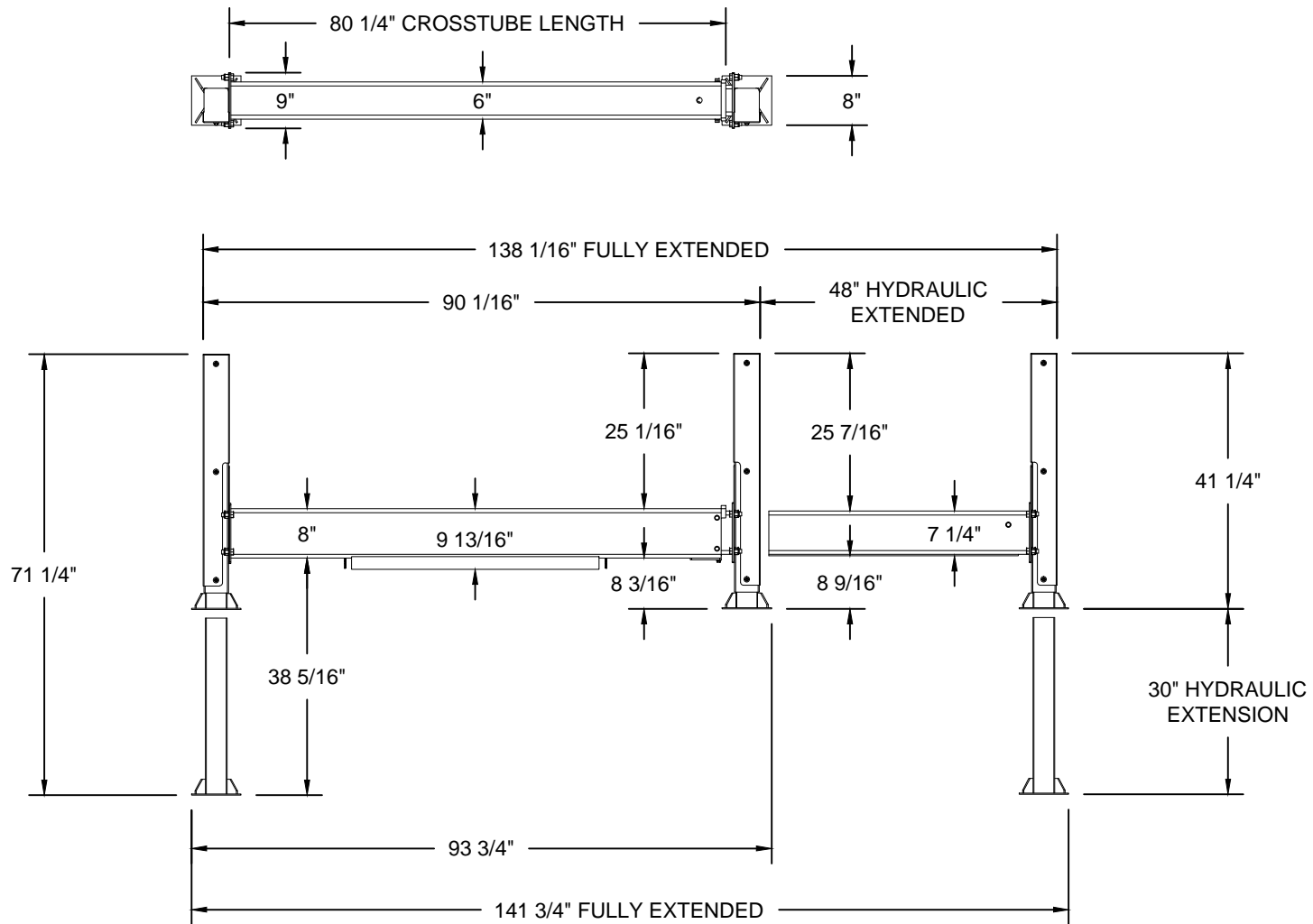
DATE
01-20-17

SUPERSEDES
-

PAGE

03

25489



HIGHEST LEG MOUNT SHOWN

6" RANGE ADJUSTABLE
FOR LEG MOUNTING
AT 2" INCREMENTS



VENCO VENTURO INDUSTRIES LLC
CINCINNATI, OHIO

OVERALL DIMENSIONS

25100-PHX OUTRIGGER WITH LONG LEGS

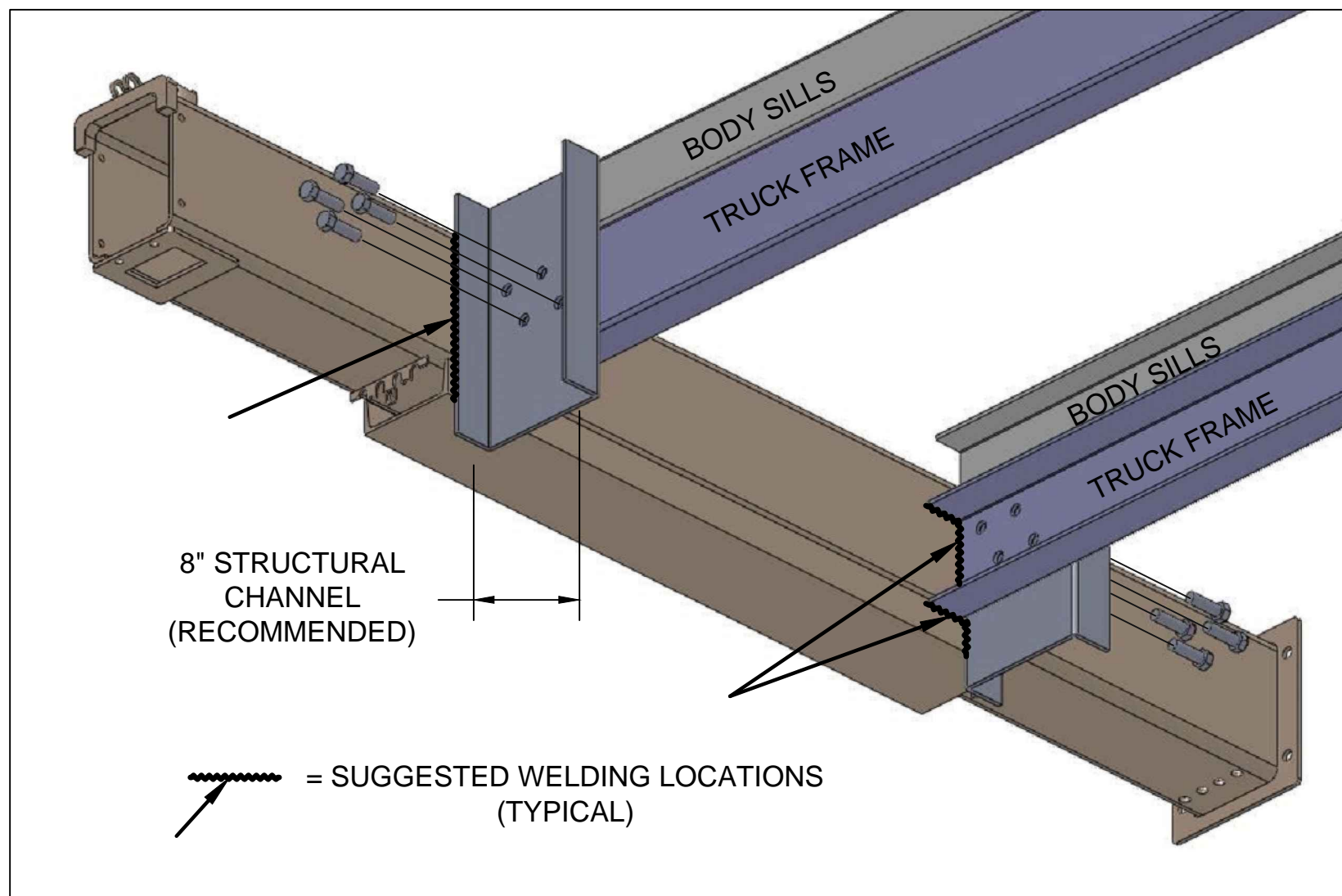
DATE
01-20-17

SUPERSEDES
-

PAGE

04

25490



VENCO VENTURO INDUSTRIES LLC
CINCINNATI, OHIO

RECOMMENDED MOUNTING TO TRUCK FRAME

25100/26100 SERIES STABILIZERS

DATE
12-08-23A

SUPERSEDES
01-20-17

SECTION
C200

25484-2



REFERENCE PAGE 15 FOR ITEM NUMBERS



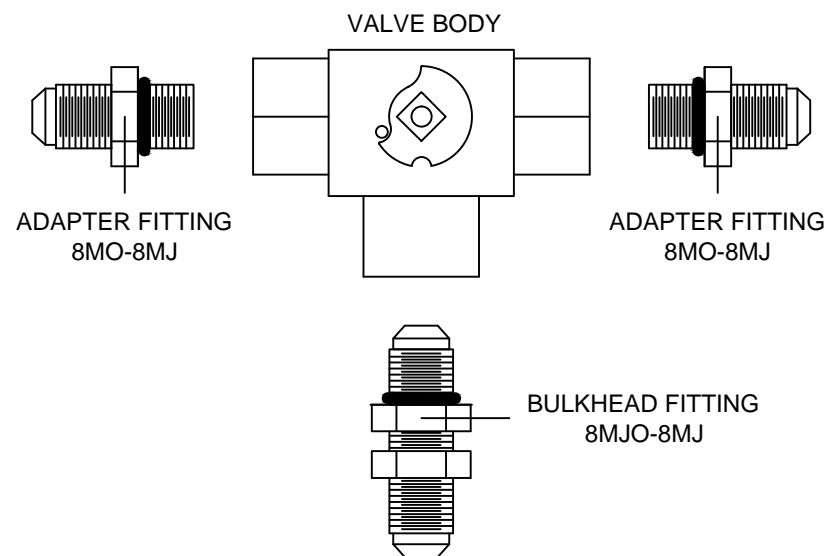
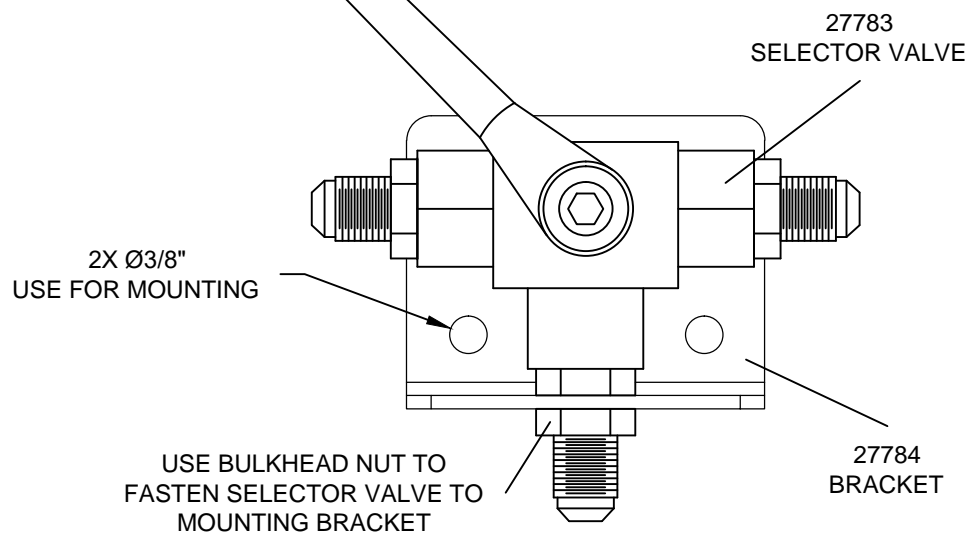
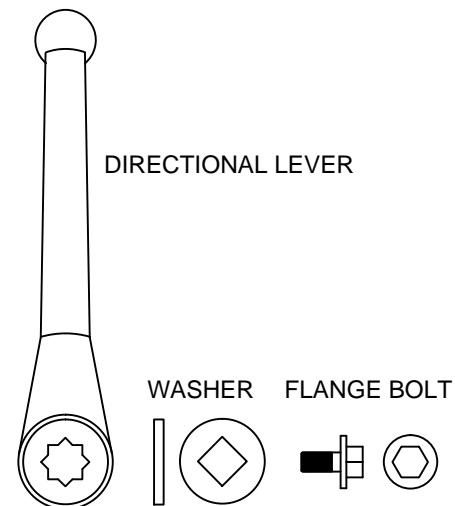
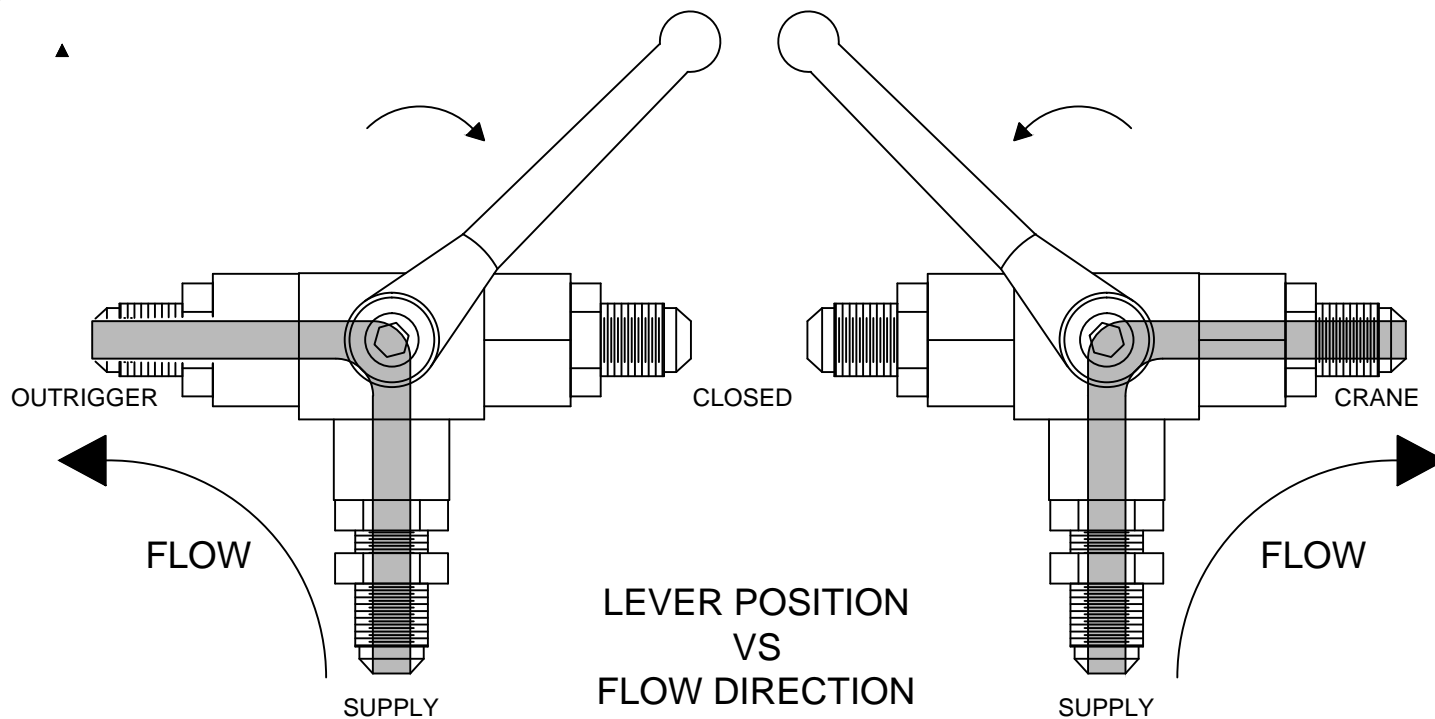
VENCO VENTURO INDUSTRIES LLC
CINCINNATI, OHIO

SMALL PARTS IMAGE

25100-PHX OUTRIGGERS

DATE
01-20-17A
SUPERSEDES
03-11-16

PAGE
06
25448



VENCO VENTURO INDUSTRIES LLC
CINCINNATI, OHIO

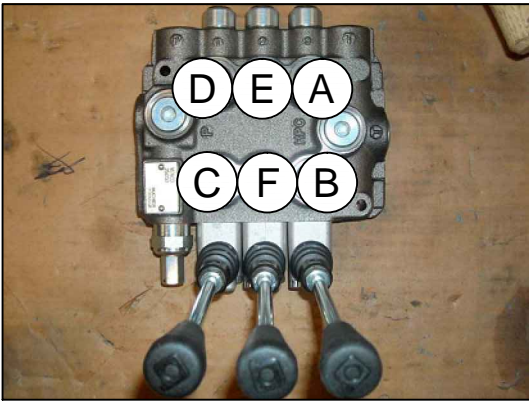
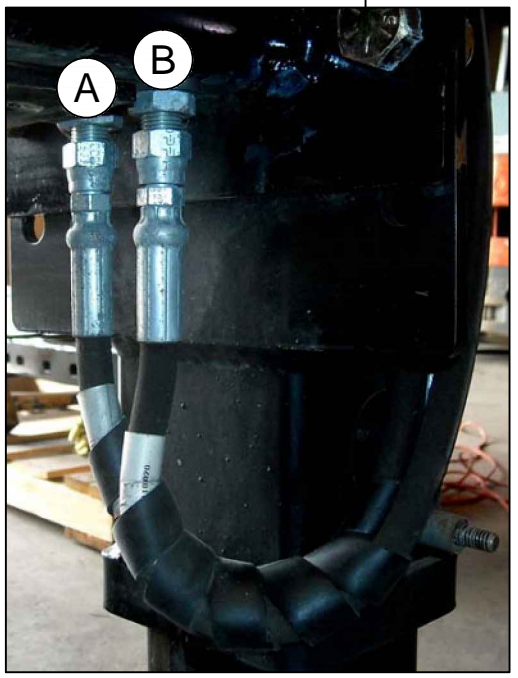
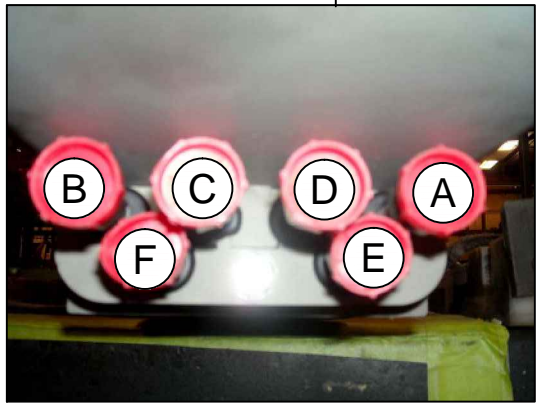
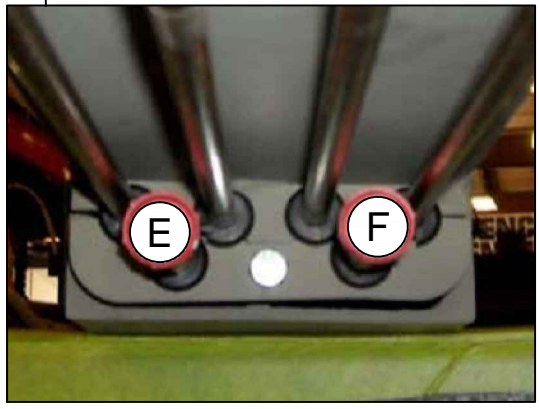
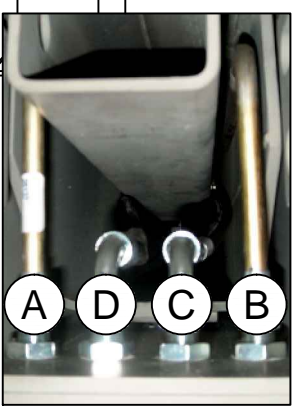
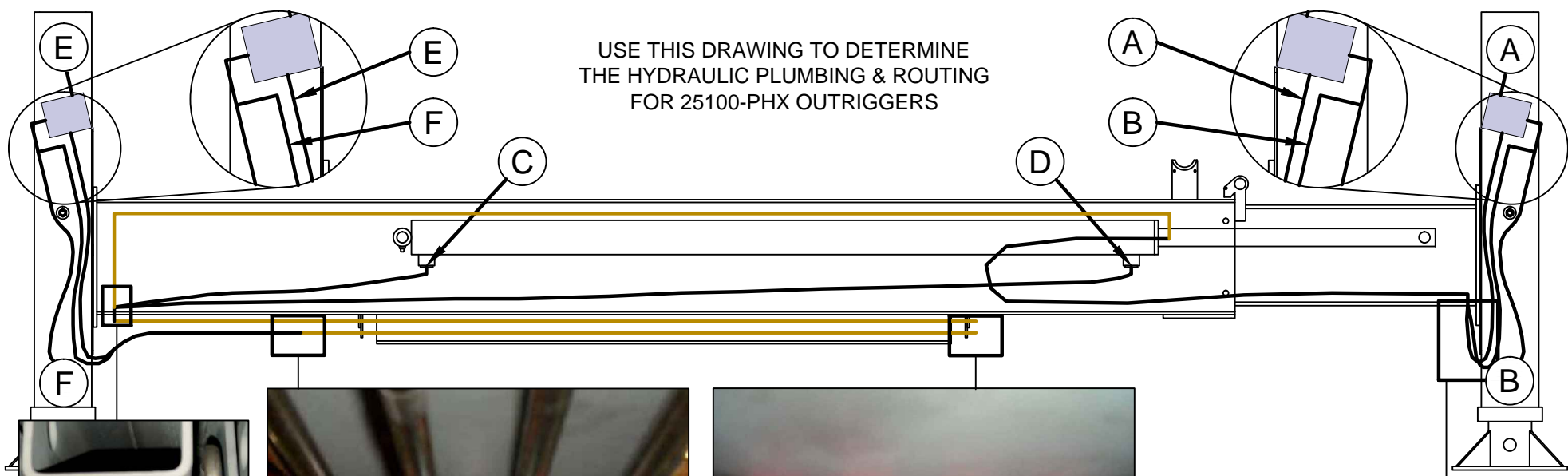
SELECTOR VALVE OVERVIEW

HYDRAULIC CRANES & STABILIZERS

DATE
12-07-23B
SUPERSEDES
01-20-17A

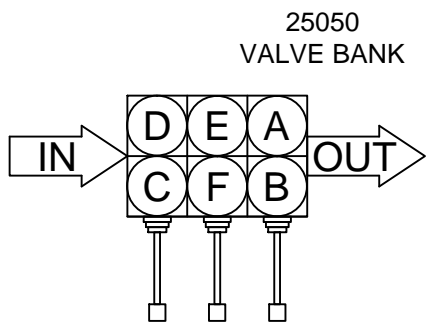
SECTION
C200
25447-1

USE THIS DRAWING TO DETERMINE
THE HYDRAULIC PLUMBING & ROUTING
FOR 25100-PHX OUTRIGGERS



OUTRIGGER FUNCTIONS

- A = RIGHT LEG DOWN
- B = RIGHT LEG UP
- C = PULLOUT OUT
- D = PULLOUT IN
- E = LEFT LEG DOWN
- F = LEFT LEG UP



VENCO VENTURO INDUSTRIES LLC
CINCINNATI, OHIO

HYDRAULIC MAPPING, 1 OF 2

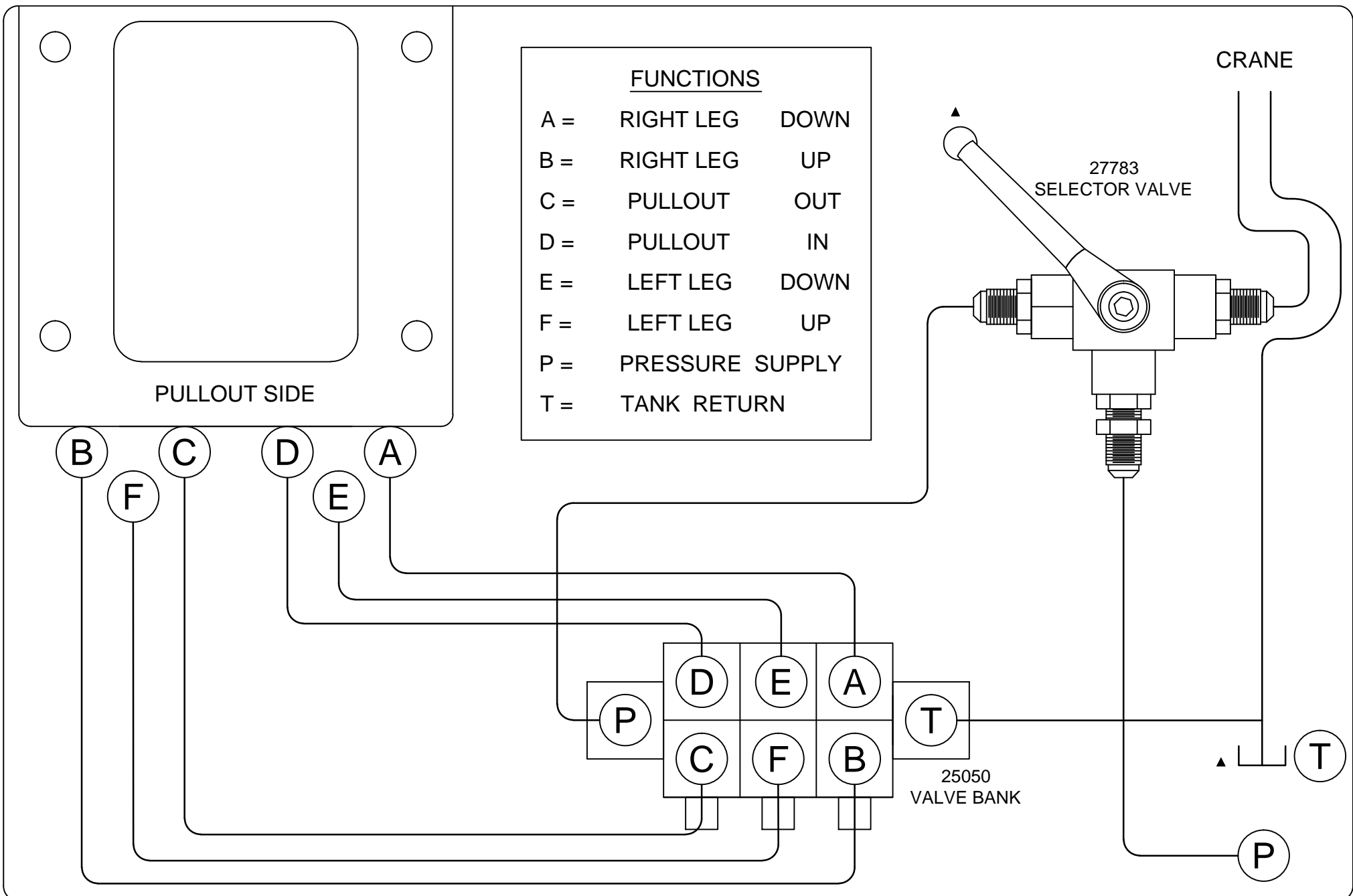
25100-PHX OUTRIGGERS

DATE
01-20-17B

SUPERSEDES
03-17-16A

PAGE
08

25446



VENCO VENTURO INDUSTRIES LLC
CINCINNATI, OHIO

HYDRAULIC MAPPING, 2 OF 2

25100 / 26100-PHX STABILIZERS ▲

DATE
12-08-23C

SUPERSEDES
01-23-17B

SECTION
C200 ▲

25449

RECOMMENDED DEPARTURE ANGLE



VENCO VENTURO INDUSTRIES LLC
CINCINNATI, OHIO

RECOMMENDED DEPARTURE ANGLE

REAR MOUNTED OUTRIGGERS

DATE
08-25-22A

SUPERSEDES
01-18-17

PAGE

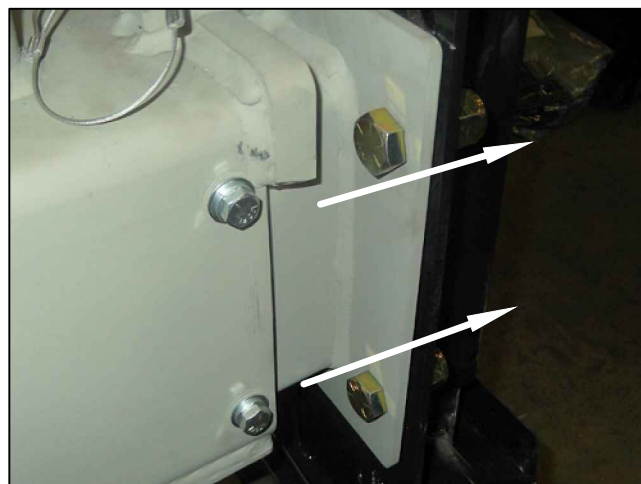
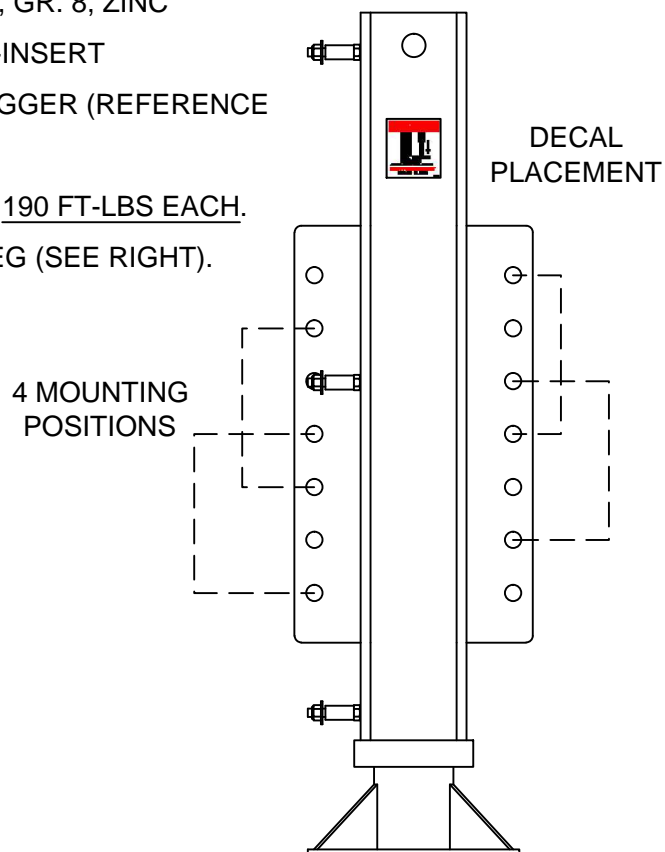
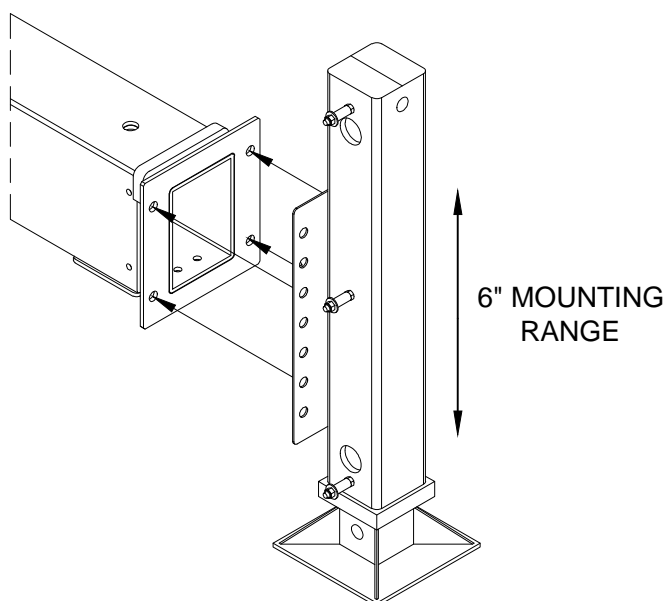
-

25485

MOUNTING THE OUTRIGGER LEGS, 25100 SERIES OUTRIGGERS

FOLLOW INSTRUCTIONS FOR MOUNTING 25100 SERIES OUTRIGGER LEGS.

- ▲ 1. DETERMINE PLACEMENT OF OUTRIGGER LEGS. REFER TO MODEL SPECIFIC 'OVERALL DIMENSIONS' PAGE.
2. USE HARDWARE & FASTENERS PROVIDED (REFERENCE IMAGE BELOW):
 - [8] HEX HEAD CAP SCREW; 5/8-11 X 1-1/2", GR. 8, ZINC
 - [8] LOCK NUT; 5/8-11, GR. 8, ZINC, NYLON-INSERT
3. INSERT BOLTS POINTING AWAY FROM OUTRIGGER (REFERENCE IMAGE BELOW).
4. TORQUE OUTRIGGER LEG BOLTS & NUTS TO 190 FT-LBS EACH.
5. PLACE 24964 DANGER DECAL, [1] ON EACH LEG (SEE RIGHT).



VENCO VENTURO INDUSTRIES LLC
CINCINNATI, OHIO

MOUNTING THE LEGS

25100 SERIES OUTRIGGERS

DATE
01-23-17A

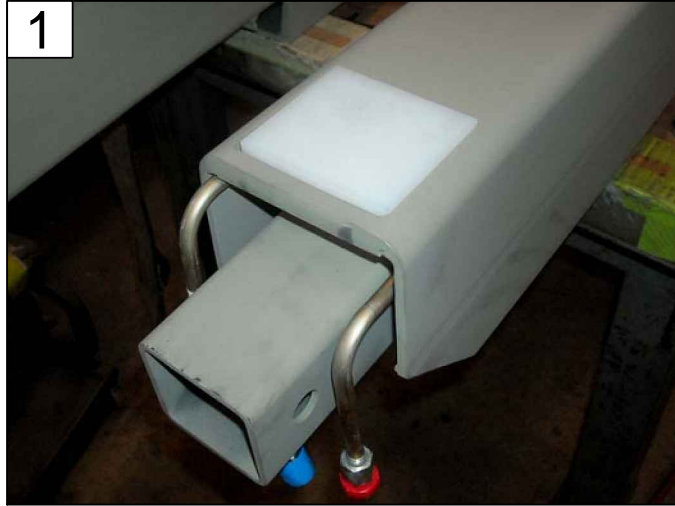
SUPERSEDES
03-11-16

PAGE

11

25428-2

ASSEMBLY OF 25100-PHX OUTRIGGER WITH LESS-CROSSTUBE CONFIGURATION



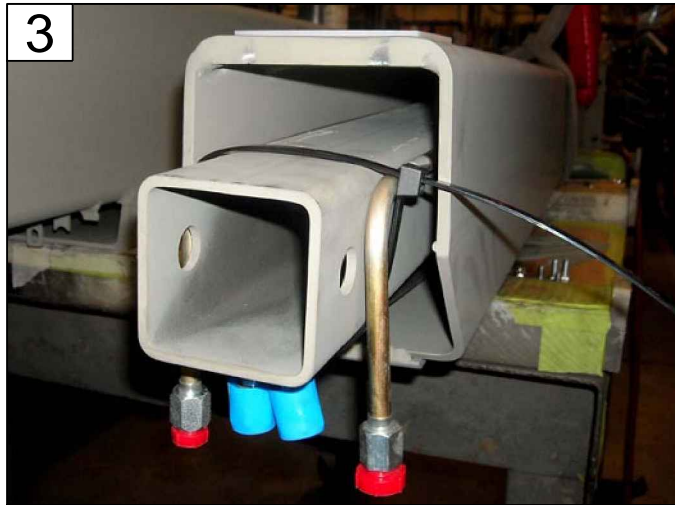
1

PLACE [1] UHMW PAD ON PULLOUT
PAGE 15 - ITEM 1



2

PLACE [1] UHMW PAD IN CROSSTUBE
PAGE 15 - ITEM 1



3

ENSURE PULLOUT CYLINDER HOUSING
& PLUMBING ARE TIED



4

SLIDE PULLOUT INTO CROSSTUBE



5

FASTEN 25065 NUT BAR RETAINERS IN CROSSTUBE
PAGE 15 - ITEMS 2, 7, 8, & 9



6

FASTEN 25077 NUT BAR RETAINER IN CROSSTUBE
PAGE 15 - ITEMS 3, 4, 5, & 6



VENCO VENTURO INDUSTRIES LLC
CINCINNATI, OHIO

LESS-CROSSTUBE ASSY

25100-PHX OUTRIGGERS

DATE
01-23-17A

SUPERSEDES
03-11-16

PAGE
12

25443

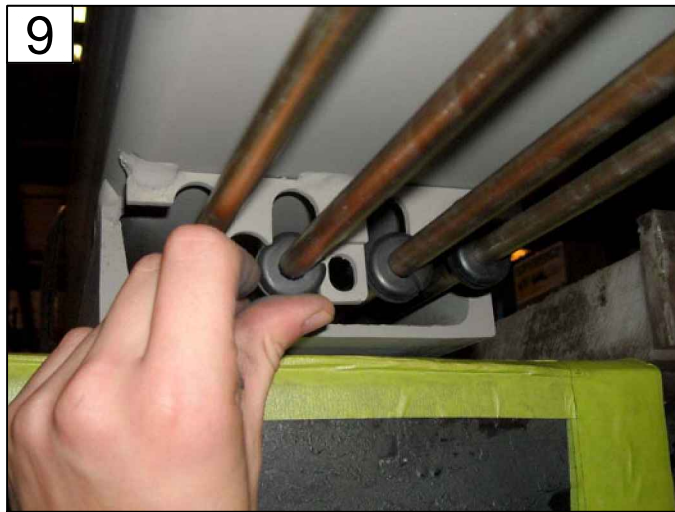
ASSEMBLY OF 25100-PHX OUTRIGGER WITH LESS-CROSSTUBE CONFIGURATION



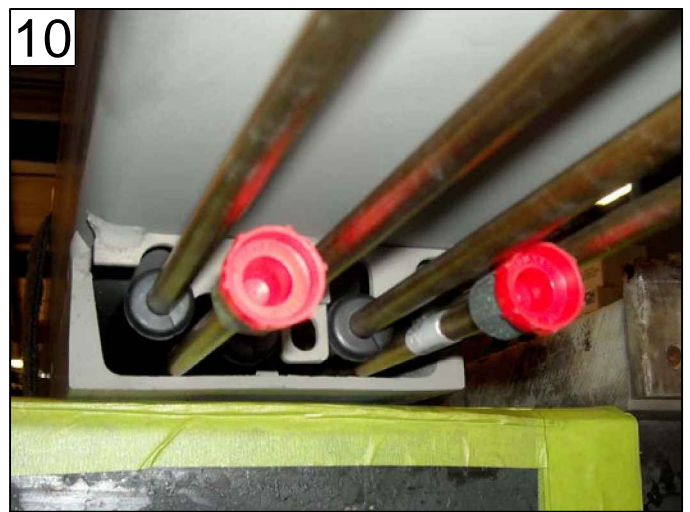
FASTEN BULKHEADS - SEE NEXT STEP'S IMAGE
PAGE 15 - ITEM 12



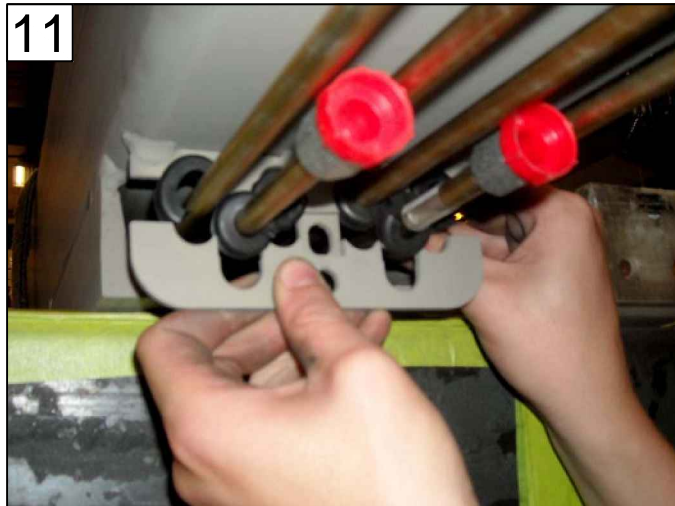
FASTEN 25138 TUBES TO BULKHEADS
PAGE 15 - ITEM 13



PUSH GROMMETS AROUND TUBES
PAGE 15 - ITEM 15



PLACE 25139 TUBES
PAGE 15 - ITEM 14



CLAMP AROUND GROMMETS
PAGE 15 - ITEM 16



FASTEN CLAMP, PAGE 15 - ITEMS 4 & 17
REPEAT STEPS 9 TO 11 FOR OPPOSITE CLAMP



VENCO VENTURO INDUSTRIES LLC
CINCINNATI, OHIO

LESS-CROSSTUBE ASSY

25100-PHX OUTRIGGERS

DATE
01-23-17A

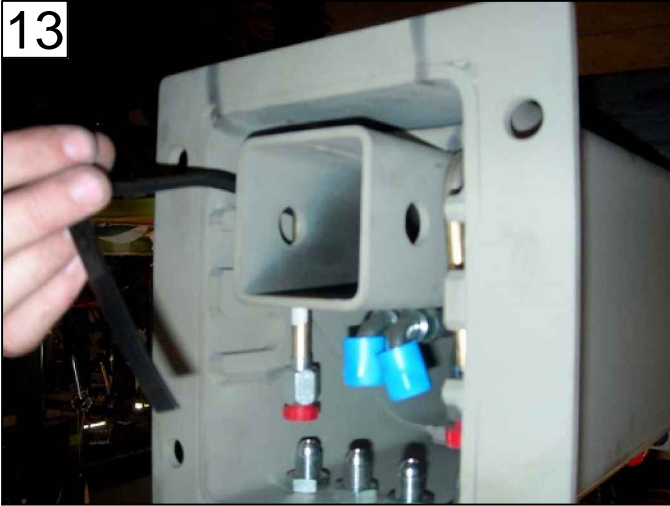
SUPERSEDES
03-11-16

PAGE
13

25444

ASSEMBLY OF 25100-PHX OUTRIGGER WITH LESS-CROSSTUBE CONFIGURATION

13



UNTIE PULLOUT CYLINDER HOUSING & PLUMBING

14



SEE HYDRAULIC MAPPING
PAGES 8 & 9

15



INSERT SHAFT & COLLARS INTO CYLINDER HOUSING

16



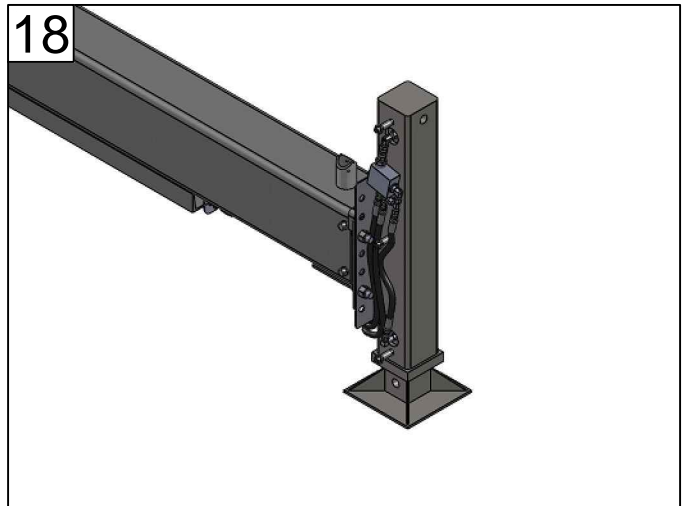
PUSH SHAFT INTO TOP SLOT OF CROSSTUBE

17



WITH CYLINDER HOUSING CENTERED
LOCTITE & FASTEN COLLARS FLUSH

18



PROCEED TO MOUNTING OF LEGS
& HYDRAULICS



VENCO VENTURO INDUSTRIES LLC
CINCINNATI, OHIO

LESS-CROSSTUBE ASSY

25100-PHX OUTRIGGERS

DATE
01-23-17A

SUPERSEDES
03-11-16

PAGE

14

25445

SECTION 300

OPERATION

&

MAINTENANCE



VENCO VENTURO INDUSTRIES LLC
CINCINNATI, OHIO

25100 PHX (E) OPERATION

STABILIZER OPERATION:

WHEN OPERATING STABILIZERS, ENSURE EVERYONE IS STANDING CLEAR AND NOTHING IS OBSTRUCTING STABILIZER PAD AND GROUND. FOR MAXIMUM STABILITY, FULLY EXTEND ALL STABILIZER (S) AND LOWER ALL LEGS ON A FIRM FOUNDATION

OSHA REQUIRES THE TRUCK TO BE LEVEL WITHIN 1% OF GRADE FOR ANY LIFTING OPERATION

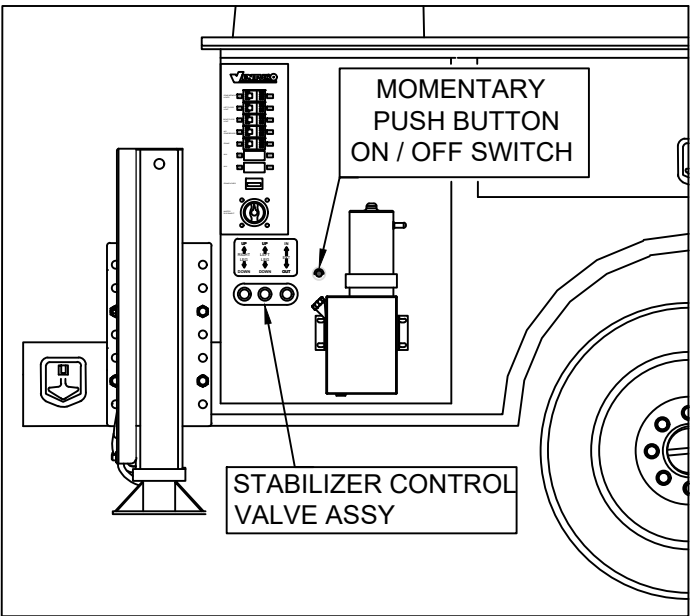
ALWAYS HAVE STABILIZERS IN PLACE FOR ANY LIFTING OPERATION!

NOTE: STABILIZERS ARE NOT MEANT TO LIFT THE VEHICLE TIRES OFF THE GROUND. TIRE-TO-GROUND CONTACT IS ESSENTIAL AND PART OF THE VEHICLE STABILITY CALCULATION SYSTEM.

25100 PHXE START THE ENGINE

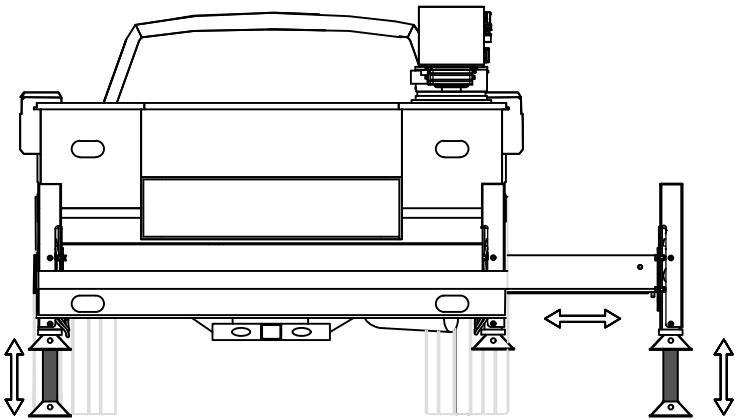
ELECTRIC OVER HYDRAULIC POWERED STABILIZER OPERATION REQUIRES THE CHASSIS ENGINE TO BE RUNNING IN ORDER TO MAINTAIN THE CHASSIS BATTERY CHARGE LEVEL

THE MOMENTARY PUSH BUTTON POWER SWITCH MUST BE HELD IN THE ON POSITION IN CONCERT WITH CONTROL VALVE HANDLE OPERATION FOR STABILIZER TO FUNCTION



25100 PHX START THE ENGINE ENGAGE THE PTO

FOR PTO HYDRAULIC OPERATION THE CHASSIS ENGINE MUST BE RUNNING AND THE P.T.O. (POWER TAKE OFF) UNIT MUST BE ENGAGED. HYDRAULIC FLOW MUST BE DIVERTED TO THE STABILIZER HYDRAULIC CIRCUIT. FOR MORE INFORMATION SEE, CHASSIS / P.T.O. OWNER MANUALS.



VENCO VENTURO LLC
CINCINNATI, OHIO

TITLE
STABILIZER OPERATION

25100 PHX (E)

DATE
11-07-25

SUPERSEDES
-

SECTION
-

30035

SECTION 400

REPLACEMENT PARTS



VENCO VENTURO INDUSTRIES LLC
CINCINNATI, OHIO

PARTS BREAKDOWN, 25100-PHX OUTRIGGERS (LESS-CROSSTUBE PARTS INCLUDED)

#	PART #	DESCRIPTION	QTY	
			-SL	-LL
*1	25081	UHMW PAD; 3-1/8 X 3-1/2 X 3/8	2	2
*2	25065	NUT BAR RETAINER	2	2
*3	25077	NUT BAR RETAINER	1	1
*4	!HHCS03118075	HEX HEAD CAP SCREW; 5/16-18 X 3/4, GR. 5	2	2
*5	!LWSH-031	LOCK WASHER; 5/16, GR. 5	2	2
*6	!FWSH-031	FLAT WASHER; 5/16, GR. 5	2	2
▲ *7	!HHCS03816050	HEX HEAD CAP SCREW; 3/8-16 X 1/2, GR. 5	4	4
*8	!LWSH-038	LOCK WASHER; 3/8, GR. 5	4	4
▲ *9	-	-	-	-
*10	!HHCS06311150-8	HEX HEAD CAP SCREW; 5/8-11 X 1-1/2, GR. 8	8	8
*11	!LNUT-06311-8	LOCK NUT; 5/8-11, GR. 8, NYLON INSERT	8	8
*12	H2701-0606	ADAPTER FITTING; 90° BULKHEAD, 6MJ-6MJ	4	4
*13	25138	HYDRAULIC TUBE, 60"	4	4
*14	25139	HYDRAULIC TUBE, 47"	2	2
*15	14883	GROMMETS, HYDRAULIC TUBES	12	12
*16	25157	CROSSTUBE CLAMP PLATE	2	2
*17	!LNUT-03118	LOCK NUT; 5/16-18, GR.5, NYLON INSERT	2	2
*18	28446	CLAMPING SHAFT COLLAR - 3/4 ID	2	2
*19	25051	SHAFT, CYLINDER HOUSING	1	1
*20	24964	DECAL; DANGER, CRUSHING INJURY	2	2
21	SEE PAGES 19 & 20	HYDRAULIC LEG; SHORT, LEFT, 25100 O.R.	1	-
22	SEE PAGES 19 & 20	HYDRAULIC LEG; SHORT, RIGHT, 25100 O.R.	1	-
23	SEE PAGES 19 & 20	HYDRAULIC LEG; LONG, LEFT, 25100 O.R.	-	1
24	SEE PAGES 19 & 20	HYDRAULIC LEG; LONG, RIGHT, 25100 O.R.	-	1
*25	25050	VALVE BLOCK, 3-SPOOL	1	1
*26	H6400-0808	ADAPTER FITTING; STRAIGHT, 8MJ-8MO	2	2
*27	H6400-0608	ADAPTER FITTING; STRAIGHT, 6MJ-8MO	6	6
*28	27783	SELECTOR VALVE	1	1
*29	27784	BRACKET, SELECTOR VALVE	1	1
30	INST-21024	OUTRIGGER & ACCESSORIES MANUAL	1	1
31	25085-2	CROSSTUBE; 25100 SERIES OUTRIGGERS	1	1
32	-	-	-	-
*33	!HHCS03118063	HEX HEAD CAP SCREW; 5/16-18 X 5/8, GR. 5	2	2

* WHEN PURCHASED IN "LESS CROSS TUBE" ("LCT") CONFIGURATION, THESE ITEMS WILL BE SHIPPED LOOSE AND REQUIRE INSTALLATION



VENCO VENTURO INDUSTRIES LLC
CINCINNATI, OHIO

PARTS BREAKDOWN

25100-PHX OUTRIGGERS

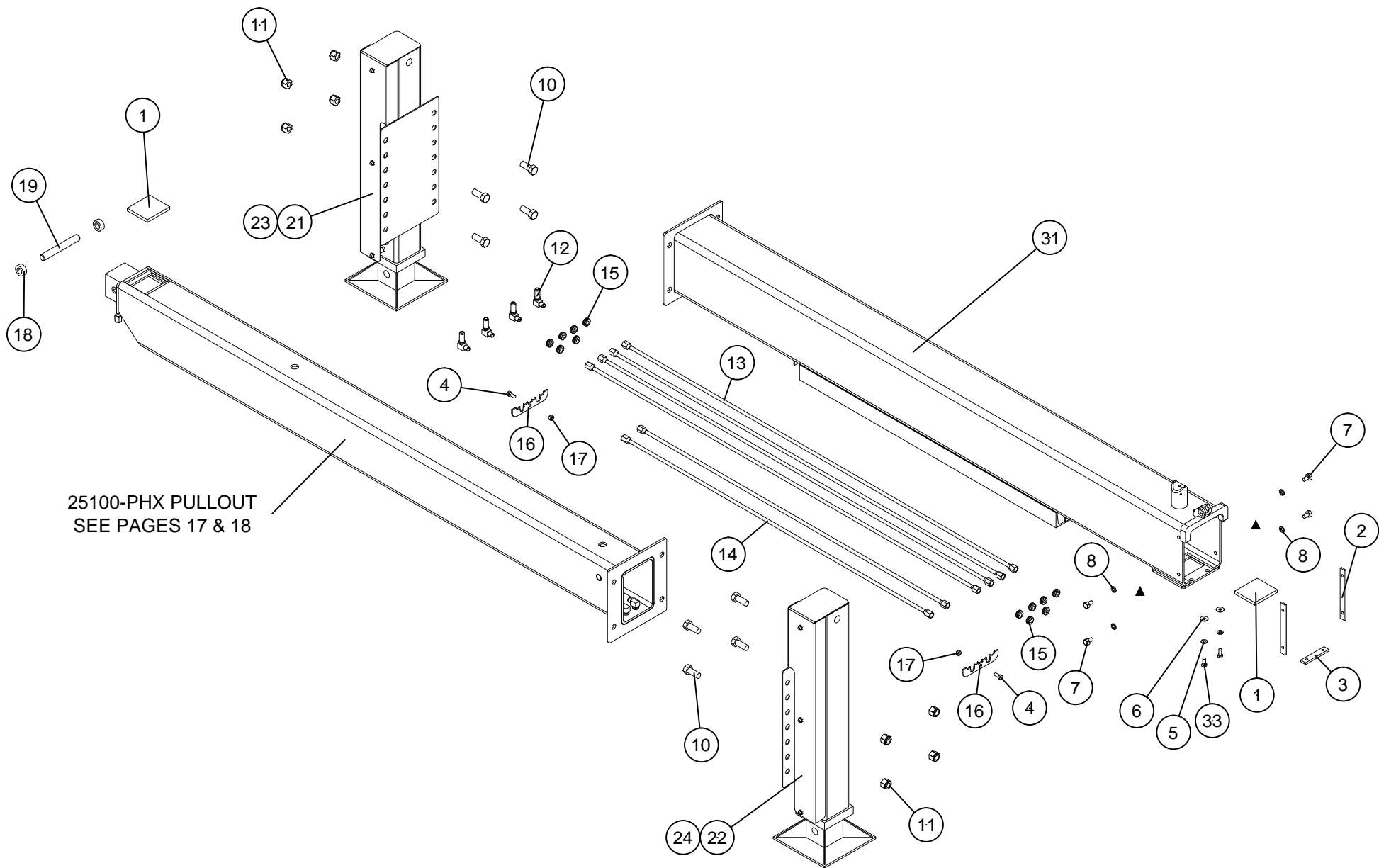
DATE
07-02-25F

SUPERSEDES
07-30-24E

PAGE

15

25442



REFERENCE PAGE 15 FOR ITEM NUMBERS



VENCO VENTURO INDUSTRIES LLC
CINCINNATI, OHIO

PARTS BREAKDOWN (LESS-CROSSTUBE PARTS INCLUDED)

25100-PHX OUTRIGGERS

DATE
07-02-25C
SUPERSEDES
07-29-24B

PAGE

16

25441

PARTS BREAKDOWN, 25100-PHX PULLOUT ASSEMBLY

#	PART #	DESCRIPTION	QTY
1	25087-2	PULLOUT; 4', 25100-PHX OUTRIGGERS	1
2	25086	EXTENSION CYLINDER; 4', 25100-PHX	1
3	25088	HOUSING; EXTENSION CYLINDER BASE-END	1
4	25137	HYDRAULIC TUBE; RIGHT LEG, DOWN	1
5	25136	HYDRAULIC TUBE; RIGHT LEG, UP	1
6	25149	HOSE ASSEMBLY; RIGHT LEG, UP & DOWN	2
7	25154	HOSE ASSEMBLY; CYLINDER, OUT	1
8	25155	HOSE ASSEMBLY; CYLINDER, IN	1
9	25049	SHAFT; CYLINDER & HOUSING, BASE-END	1
10	!SRNG-075	SNAP RING; 3/4", PLATED	2
11	25052	SHAFT; CYLINDER & PULLOUT, ROD-END	1
12	28446	CLAMPING SHAFT COLLAR - 3/4" ID	4
13	H2701LN-0606	BULKHEAD FITTINGS; 90°, 6MJ-6MJ, L-NUT	2
14	H6400-0408	HYD TUBE ADAPTER - 4MJ-8MO	2

▲



VENCO VENTURO INDUSTRIES LLC
CINCINNATI, OHIO

PARTS BREAKDOWN

25100-PHX PULLOUT ASSY

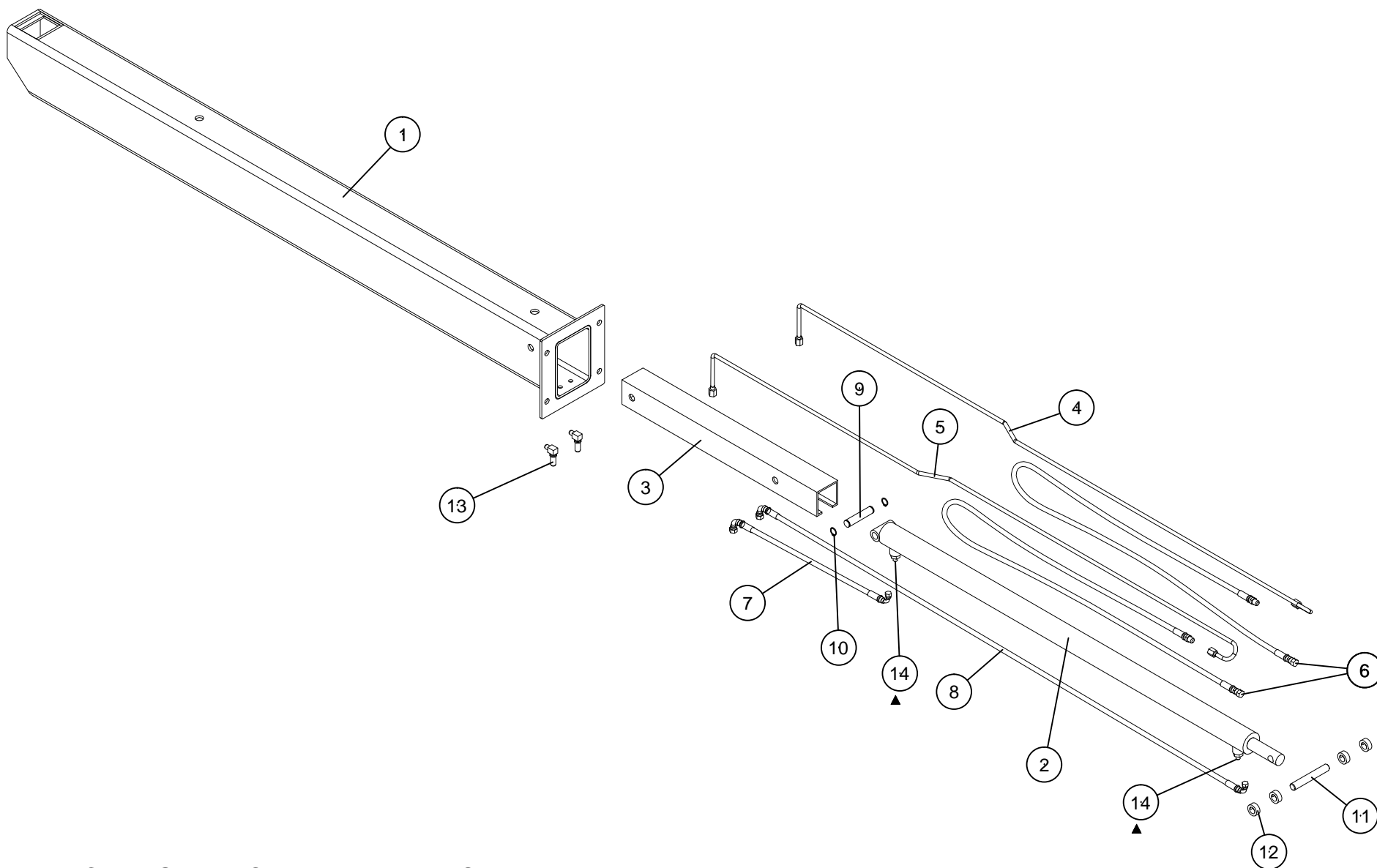
DATE
07-30-24C

SUPERSEDES
07-26-24B

PAGE

17

25451



REFERENCE PAGE 17 FOR ITEM NUMBERS



VENCO VENTURO INDUSTRIES LLC
CINCINNATI, OHIO

PARTS BREAKDOWN

25100-PHX PULLOUT ASSEMBLY

DATE
07-30-24B

SUPERSEDES
01-23-17A

PAGE

18

25450

PARTS BREAKDOWN, 25100 SERIES HYDRAULIC LEGS ASSEMBLY

25100 SERIES OUTRIGGERS HYDRAULIC LEGS ASSEMBLY PARTS BREAKDOWN		SHORT		LONG		
		LEFT	RIGHT	LEFT	RIGHT	
#	DESCRIPTION	QUANTITY				PART #
1	HYDRAULIC LEG; SHORT, LEFT-SIDE	1	-	-	-	25064-1
2	HYDRAULIC LEG; SHORT, RIGHT-SIDE	-	1	-	-	25064-2
3	HYDRAULIC LEG; LONG, LEFT-SIDE	-	-	1	-	25055-1
4	HYDRAULIC LEG; LONG, RIGHT-SIDE	-	-	-	1	25055-2
5	COVER; SHORT LEG, LEFT-SIDE	1	-	-	-	25069-1
6	COVER; SHORT LEG, RIGHT-SIDE	-	1	-	-	25069-2
7	COVER; LONG LEG, LEFT-SIDE	-	-	1	-	25068-1
8	COVER; LONG LEG, RIGHT-SIDE	-	-	-	1	25068-2
9	HOSE ASSY KIT -SL (INCLUDES HOSE AND FITTING)	1	1	-	-	25193-KIT
10	HOSE ASSY KIT -LL (INCLUDES HOSE AND FITTING)	-	-	1	1	25217-KIT
11	HOSE ASSEMBLY; 47", 4FX-6MJ, SHORT LEG, LEFT-SIDE	2	-	-	-	25151
12	HOSE ASSEMBLY; 27", 4FX-6FX, SHORT LEG, RIGHT-SIDE	-	2	-	-	25147
13	HOSE ASSEMBLY; 54", 4FX-6MJ, LONG LEG, LEFT-SIDE	-	-	2	-	25153
14	HOSE ASSEMBLY; 37", 4FX-6FX, LONG LEG, RIGHT-SIDE	-	-	-	2	25152
15	VALVE BLOCK; CHECK BODY & CARTRIDGE	1	1	1	1	22765
16	SPACER; HYDRAULIC LEG COVERS	3	3	3	3	25070
17	FLAT WASHER; 5/16, GR. 5, ZINC	3	3	3	3	!FWSH-031
18	LOCK NUT; 5/16-18, GR. 5, ZINC, NYLON-INSERT	3	3	3	3	!LNUT-03118
19	ADAPTER FITTING; 90° ELBOW, 6MO-6MJ	1	1	1	1	H6801L-0606
20	ADAPTER FITTING; COUPLING SWIVEL, 6FJX-6FX	1	1	1	1	H6565-0606
21	ADAPTER FITTING; ADAPTER, 6MJ-8MP	1	1	1	1	H2404-0608
22	ADAPTER FITTING; 90° ELBOW, 6MO-4MJ	1	1	1	1	H6801-0406
23	ADAPTER FITTING; T-SHAPE, 4MJ-4FJX-4MJ	1	1	1	1	H6602-040404
24	ADAPTER FITTING; CONNECTOR, 6MO-4MJ	1	1	1	1	H6400-0406
25	ADAPTER FITTING; 90° ELBOW, 4MJ-4FX	1	1	1	1	H6500-0404
26	-	-	-	-	-	-
▲ 27	CLEVIS PIN; 3/4 X 4 1/2	2	2	2	2	25242
▲ 28	RUE RING COTTER	4	4	4	4	25187

REFERENCE 25453 PARTS DRAWING



VENCO VENTURO LLC
CINCINNATI, OHIO

PARTS BREAKDOWN

25100 SERIES HYD. LEGS

DATE
11-13-25D

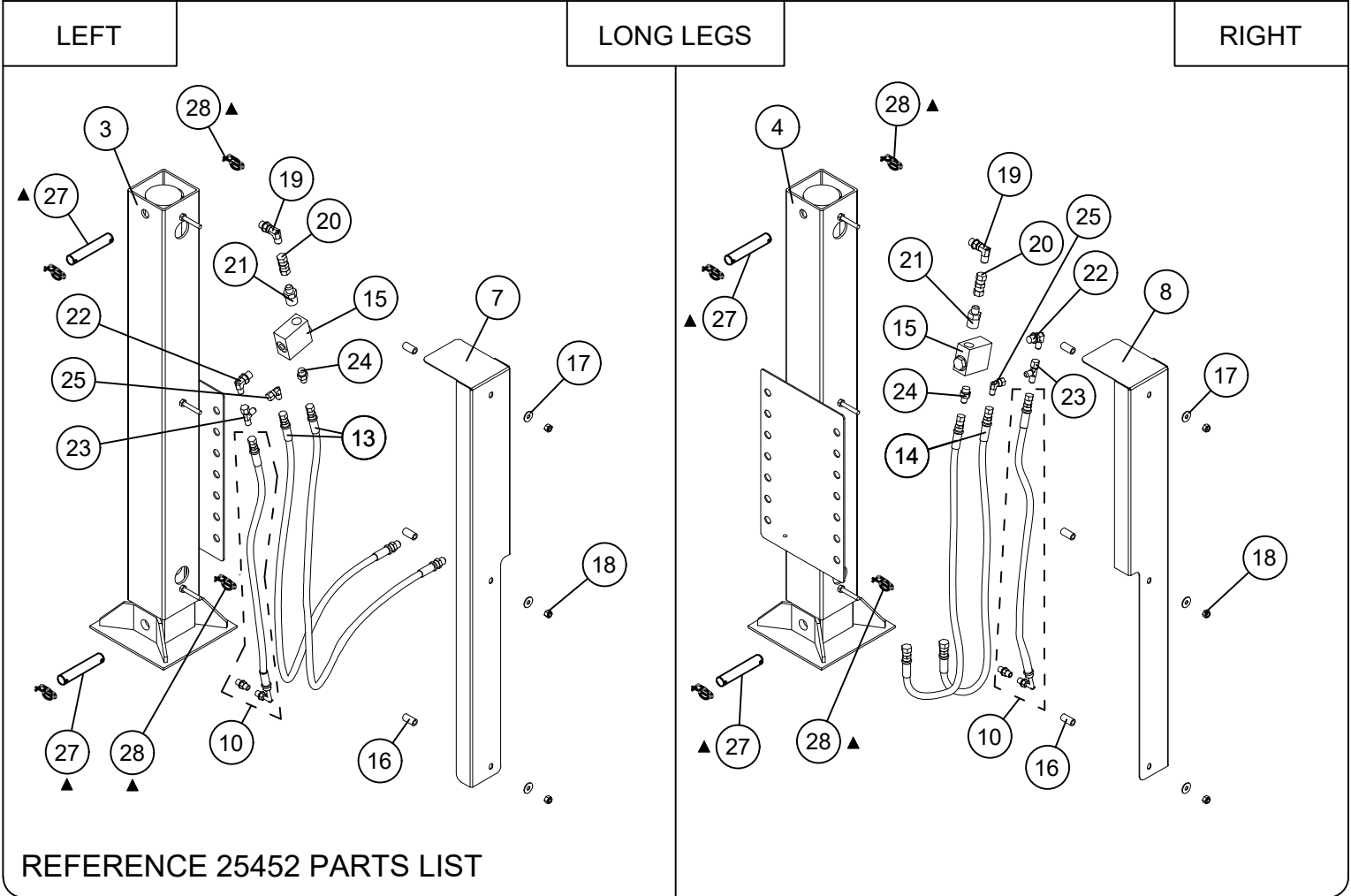
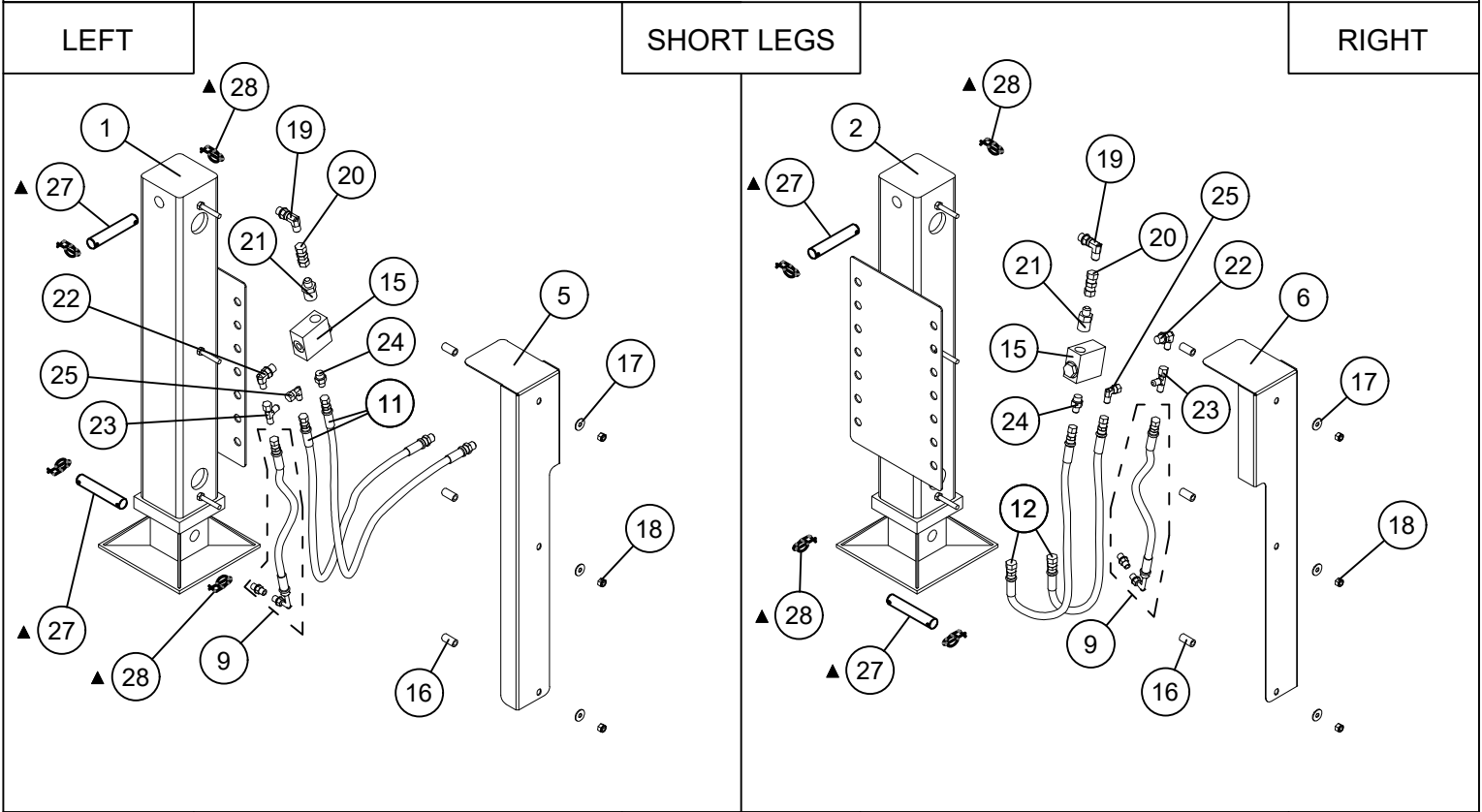
SUPERSEDES
09-05-24C

PAGE

-

25452

PARTS BREAKDOWN, 25100 SERIES HYDRAULIC LEGS ASSEMBLY



REFERENCE 25452 PARTS LIST



VENCO VENTURO LLC
CINCINNATI, OHIO

PARTS BREAKDOWN

25100 SERIES HYD. LEGS

DATE
11-13-25D

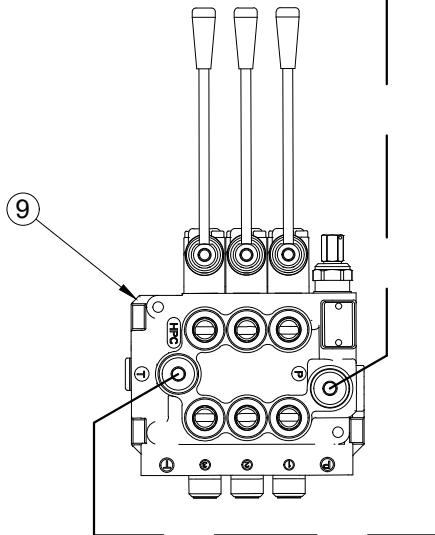
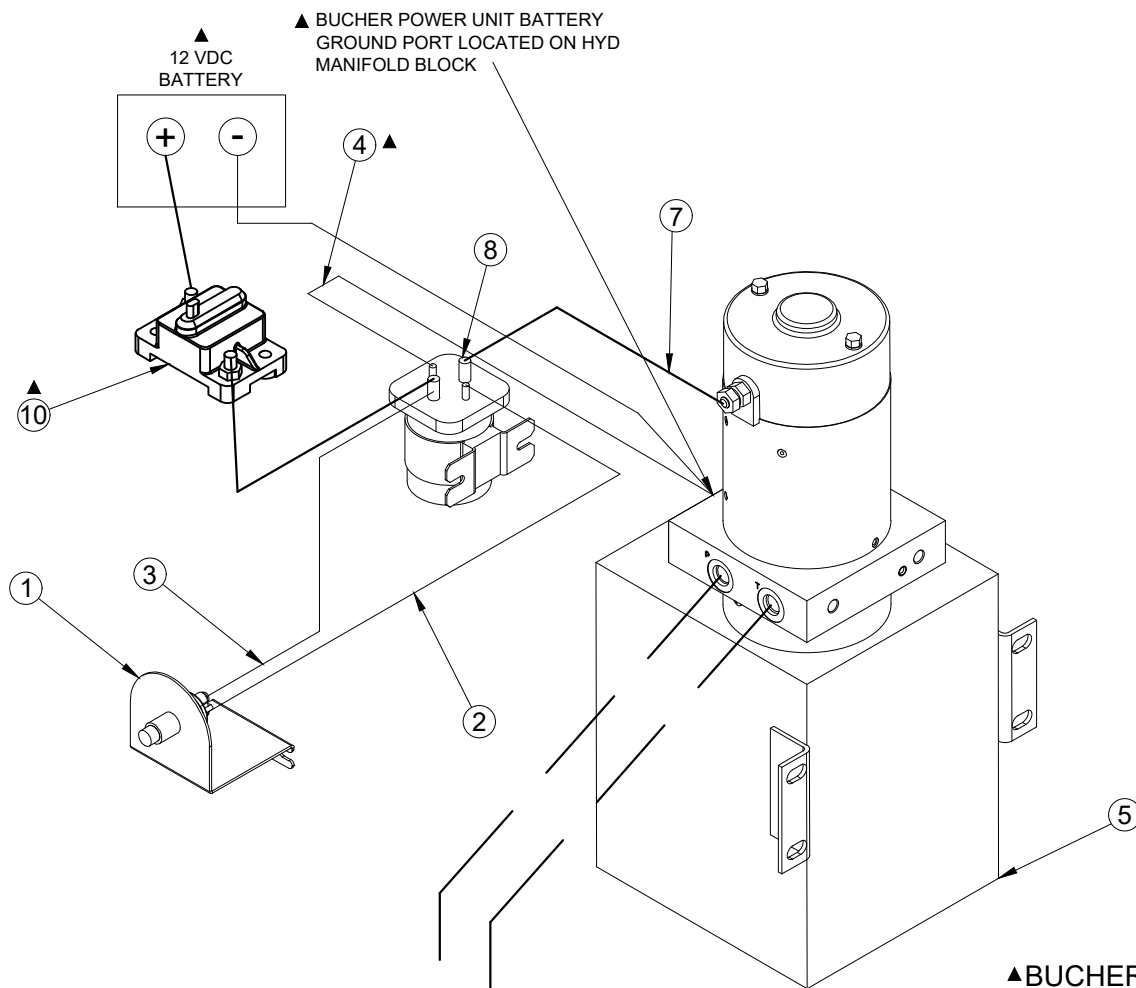
SUPERSEDES
09-05-24C

PAGE

-

25453

25477-1 "PHXE" KIT



* 10	22946-250	CIR/BREAKER; 250A MAN RESET 3/8" TERMINAL
9	25050	HYDRAULIC VALVE - 3 SPOOL
8	17600	CONTACTOR (HEAVY DUTY)
▲ 7	02025-2*22.5INX	WELDING CABLE - 2 GA, RED, 22.5"
6	01025-2*25FT	BATTERY CABLE - 2 GA, RED, 25 FT
5	26489	HYDRAULIC POWER UNIT (HEAVY DUTY)
4	22254-BLK330BD	WIRE ASSY - 16 GA, BLACK, 33", #10 RING + 3/8 RING
3	20134-1	WIRE ASSY - 16 GA, RED, 20", #10 RING + 5/16 RING
2	20134	WIRE ASSY - 16 GA, RED, 20", #10 RING + #10 RING
1	19402	N/O PUSH-BUTTON & BRACKET ASSEMBLY
ITEM	PART NO.	DESCRIPTION



VENCO VENTURO LLC
CINCINNATI, OHIO

TITLE ▲
PHXE HYD PWR UNIT KIT

▲
25000-PHX (E) SERIES STAB.

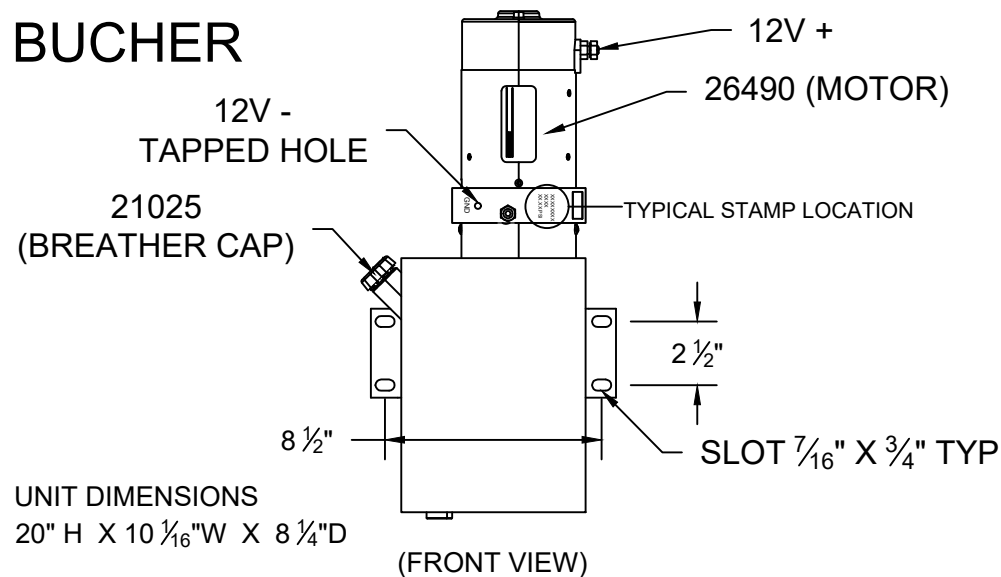
DATE
11-06-25A

SUPERSEDES
07-31-25

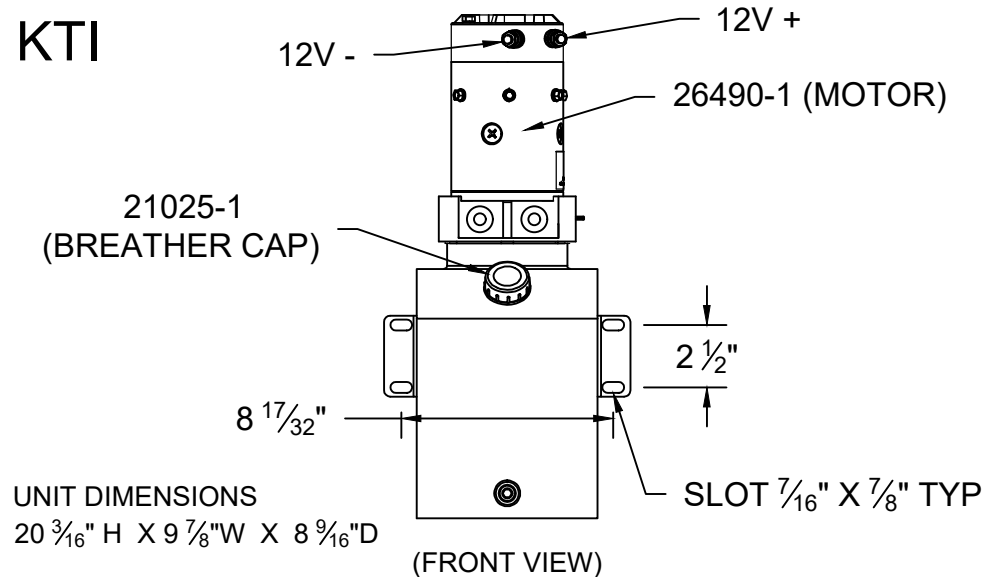
▲
-
25478

26489 HYD. POWER UNIT REPLACEMENT PARTS

BUCHER

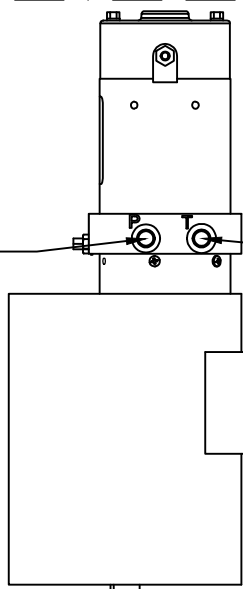


KTI



P (PRESSURE)
SAE #6 ORB
(9/16"-18)

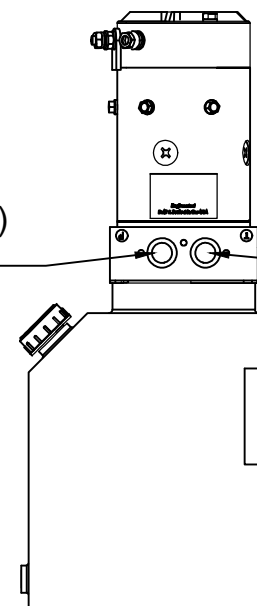
T (RETRUN)
SAE #6 ORB
(9/16"-18)



BUCHER

P (PRESSURE)
SAE #6 ORB
(9/16"-18)

T (RETRUN)
SAE #6 ORB
(9/16"-18)



KTI



VENCO VENTURO LLC
CINCINNATI, OHIO

TITLE

HYDRAULIC POWER UNIT REPLACEMENT PARTS

25000 PHXE SERIES STABILIZERS

DATE

11-06-25

SUPERSEDES

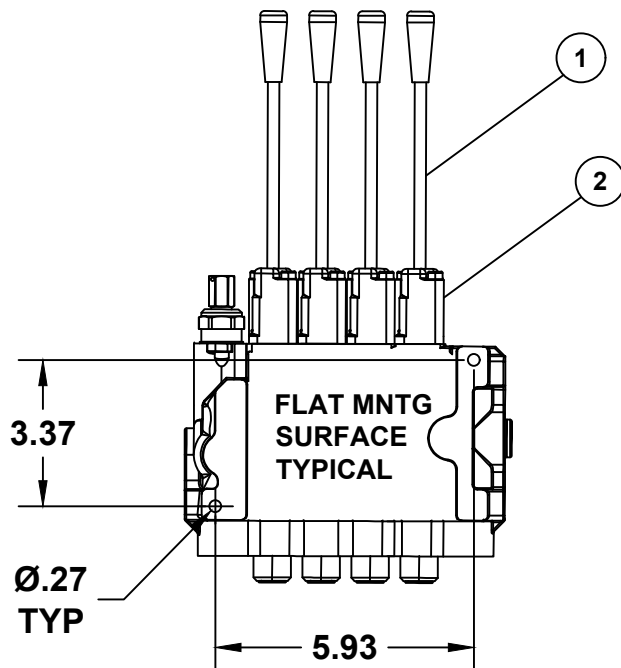
-

SECTION

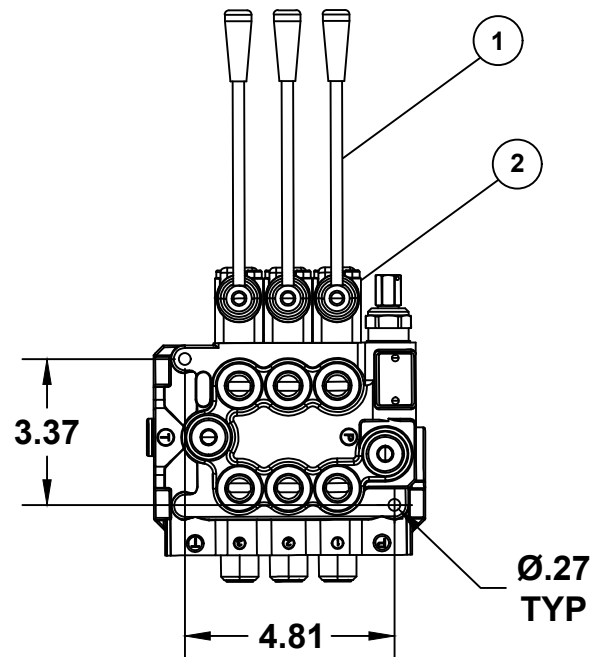
C400

23935

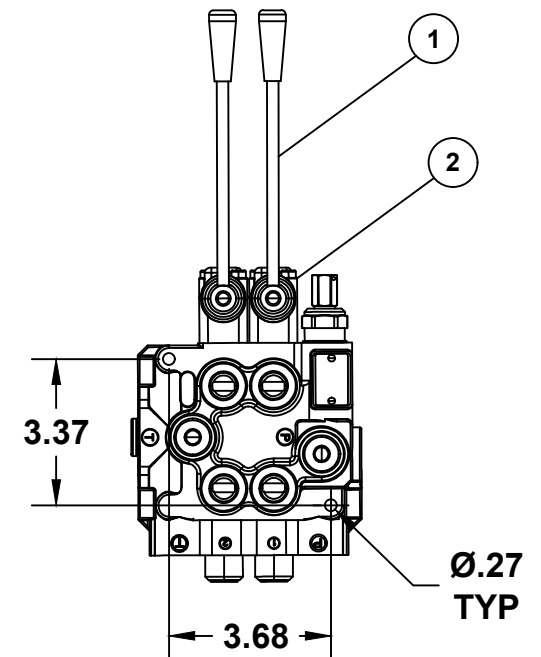
22555



25050

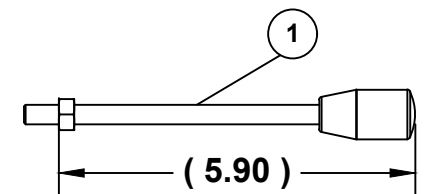
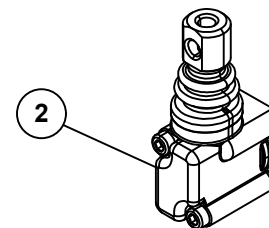


22444



NOTE:
P/N 25219 INCLUDES
MNTG HARDWARE

ITEMS 3 & 4 NOT SHOWN



	SPOOL VALVE ASSEMBLIES				
ITEM NO.	22444	25050	22555	PART NO.	DESCRIPTION
	QTY.				
1	2	3	4	25218	HANDLE, BUCHER SPOOL VALVES
2	2	3	4	25219	LEVER BOX, BUCHER SPOOL VALVES
3	2	3	4	25209	BUCHER SEAL KIT, SINGLE SECTION
4	2	3	4	25213	CENTER SPRING KIT, SINGLE SECTION



MANUFACTURING, INC.
CINCINNATI, OHIO

TITLE
REPLACEMENT PARTS - SPOOL VALVES
POWERED STABILIZERS (PH, PHX, PHXD)

DATE
09-24-25
SUPERSEDES
-

PAGE
-
25216



VENTURO CRANES LIMITED WARRANTY POLICY

Venturo products are built to last...we guarantee them.

As a purchaser of any new Venturo product covered by warranty, you will receive 1 year of the most complete coverage available...and, at no added cost to you.

1-Year Limited Warranty Policy

This limited policy warrants new products of Venturo to be free from defects in material and workmanship for a period of one (1) year from date of original installation. OEM products or accessories purchased by Venturo as part of or offered with our product will carry the OEM manufacturer's respective warranty. Our warranty covers:

- ***Repair or replacement of product***
- ***Labor to repair or replace product***
- ***Freight to return and/or replace product***

We shall not be liable for any contingent liabilities arising out of the improper function of any products. Warranty shall become void if the product is improperly installed, modified, damaged, abused or used for application other than intended use. There is no warranty of merchantability, fitness for a particular purpose, warranty arising from course of dealing or usage of trade, or any other implied or expressed warranty, except as made specifically herein. This warranty supersedes all previous warranties, written or implied.

Warranty Claims

Venco Venturo Industries LLC will make a good faith effort for prompt correction or other adjustment with respect to any product, which proves to be defective after our inspection and within the warranty period. Before any repairs are attempted or before returning any product, your Venturo Distributor is required to obtain a warranty claim number. This number is necessary for any claim to be considered. To obtain a warranty claim number, Venturo requires the model and serial number. Only authorized Venturo Distributors can perform warranty. For the name and address of your local Venturo Distributor call the **Warranty Claim Department - 513-772-8448**.

WARNING - It is the responsibility of the installer to ensure the installation is completed according to the manufacturer's recommendations, ensure the ultimate user understands how to operate product in a safe manner, and understands the need for regular service and maintenance by an authorized Venturo Distributor. No modifications or alterations may be made to any Venturo product without the expressed written consent of Venco Venturo Industries LLC. Installation of any Venturo product must be done by an authorized Venturo Distributor, to the standards of the industry; including maintenance, service and affixing of all instruction, safety and warning decals. Users should be instructed as to the safe operation at time of delivery. Maintenance, service, operation and safety warning decals are available on request from Venco Venturo Industries LLC.

VENCO VENTURO INDUSTRIES LLC
12110 BEST PLACE | CINCINNATI, OHIO 45241
P: 800-226-2238 | F: 513-326-5427
www.venturo.com