



INST-25460

25100-PH(E)(-LC)

PARTS & INSTALLATION MANUAL

25100-PH(E)(-LC)

Included in this manual:

25100-PH(E)(-LC)

- Stabilizer with Manual Pullout and Hydraulic Legs
- Available in “Less Crosstube” (-LC) configuration

VENCO VENTURO INDUSTRIES LLC
12110 BEST PLACE | CINCINNATI, OHIO 45241
800-226-2238



This manual also available online at www.venturo.com.

25100-PH(E)(-LC)

INST-25460 - 9/25/2025 (Rev: B0)

7607200A	SECTION 200: INSTALLATION
25480	INSTALLATION GUIDELINES
25481	ISOMETRIC VIEW - 25100-PH
25482	OVERALL DIMENSIONS - 25100-PH-SL
25483	OVERALL DIMENSIONS - 25100-PH-LL
25484	RECOMMENDED MOUNTING TO TRUCK FRAME
25467	SMALL PARTS IMAGE - 25100-PH
25447-1	SELECTOR VALVE OVERVIEW
25472	HYDRAULIC MAPPING - 1 OF 3
25473	HYDRAULIC MAPPING - 2 OF 3
25474	HYDRAULIC MAPPING - 3 OF 3
15660-1	BATTERY CABLES & COMPONENTS
25485	RECOMMENDED DEPARTURE ANGLE
25428-3	MOUNTING THE LEGS
25422-1	WHEEL AXLE OVERVIEW
25423-1	LCT ASSEMBLY - 1 OF 6
25424-1	LCT ASSEMBLY - 2 OF 6
25468	LCT ASSEMBLY - 3 OF 6
25469	LCT ASSEMBLY - 4 OF 6
25470	LCT ASSEMBLY - 5 OF 6
25471	LCT ASSEMBLY - 6 OF 6
7607400A	SECTION 400: REPLACEMENT PARTS
25461	25100-PH REPLACEMENT PARTS LIST
25462	25100-PH REPLACEMENT PARTS DWG
25463	PULLOUT REPLACEMENT PARTS LIST
25464	PULLOUT REPLACEMENT PARTS DWG
25452-1	HYDRAULIC LEGS REPL PARTS LIST
25453-1	HYDRAULIC LEGS REPL PARTS DRAWING
25465	19401 H.P.U. REPLACEMENT PARTS LIST
25466	19401 H.P.U. REPLACEMENT PARTS DWG
25476	25477 H.P.U. REPLACEMENT PARTS LIST
25475	25477 H.P.U. REPLACEMENT PARTS DWG
25216	REPLACEMENT PARTS
12-00073_VNT1	WARRANTY PAGE

SECTION 200

INSTALLATION



VENCO VENTURO INDUSTRIES LLC
CINCINNATI, OHIO

STABILIZER INSTALLATION GUIDELINES

Read instructions completely prior to starting installation. If this unit is to be installed on a Venturo crane body, continue to the stabilizer assembly section of this manual.

Prior to mounting the stabilizer crosstube, orient the stabilizer so the longer pullout is on the crane side of the truck.

REAR MOUNTED

Crosstube should be centered at the rear of the truck and tied into the truck frame, body longills, and crane support. Installer is responsible for proper mounting brackets and hardware that will be needed during this process. If unit is to be mounted on a service body, do not attach crosstube to body sheet metal unless otherwise specified. Allow clearance between crosstube and body for the stabilizer legs to be fully retracted. Consult chassis up-fitter guide prior to installation for proper welding and bolting procedures to chassis.

See the 'RECOMMENDED MOUNTING TO TRUCK FRAME' page

Leg installation (refer to assembly section of manual) legs are adjustable to maintain proper ground penetration of 4" to 6". The stabilizer is designed to level the truck and not lift the chassis off of the ground. They are designed to work in conjunction with the chassis suspension to stabilize the unit with the bulk of the load being supported by the chassis suspension and tires. Tires must be set at the proper pressure according to the chassis manufacture, stabilizers fully extended, and legs deployed on firm, level ground prior to crane use.

IMPORTANT - When legs are fully retracted in the stowed position, a 15° degree departure angle between the bottom of the rear tire and the lowest point of the stabilizer is recommended.

See the 'DEPARTURE ANGLE' page

For hydraulic stabilizers, the control valve and selector valve are supplied in kit. It is the installer's responsibility to supply necessary hoses and fittings between these valves and stabilizer. Refer to proper hydraulic schematic for your particular stabilizer model.

IMPORTANT - The selector valve is designed to separate the crane and stabilizer hydraulic circuits. This will not allow stabilizer use while in crane mode.

FRONT MOUNTED

Front mounted crosstube will be located on top of the chassis frame and welded to body longills. Additional shear plates (installer supplied) to be welded to crosstube and bolted to chassis frame. Crosstube to be spaced away from body for leg clearance when fully retracted. See assembly section of manual for pullout and leg installation detail.



VENCO VENTURO INDUSTRIES LLC
CINCINNATI, OHIO

INSTALLATION GUIDELINES

STABILIZERS

DATE

12-08-23A

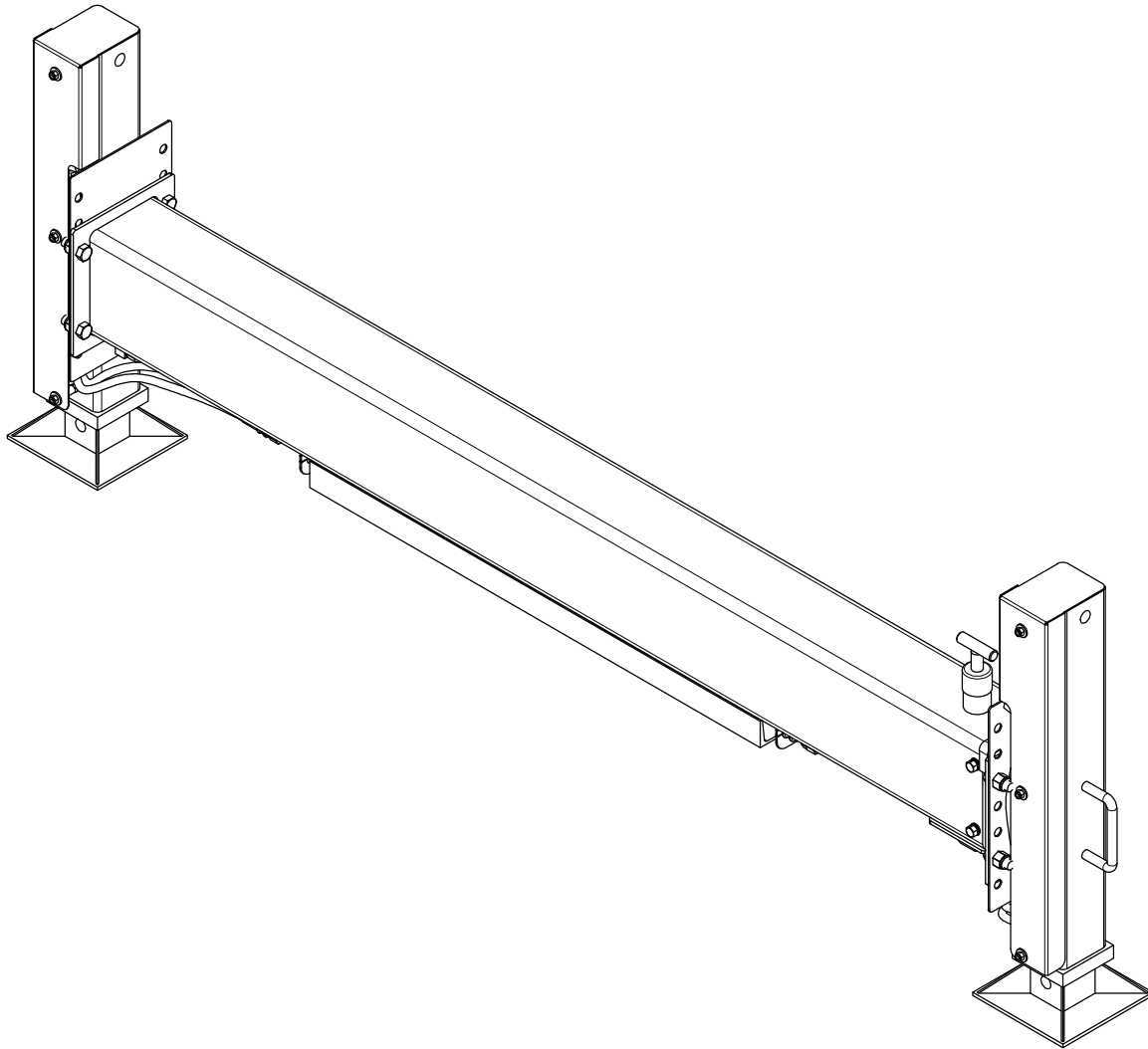
SUPERSEDES

01-17-17

SECTION

C200

25480



VENCO VENTURO INDUSTRIES LLC
CINCINNATI, OHIO

ISOMETRIC VIEW

25100-PH OUTRIGGER (WITH SHORT LEGS)

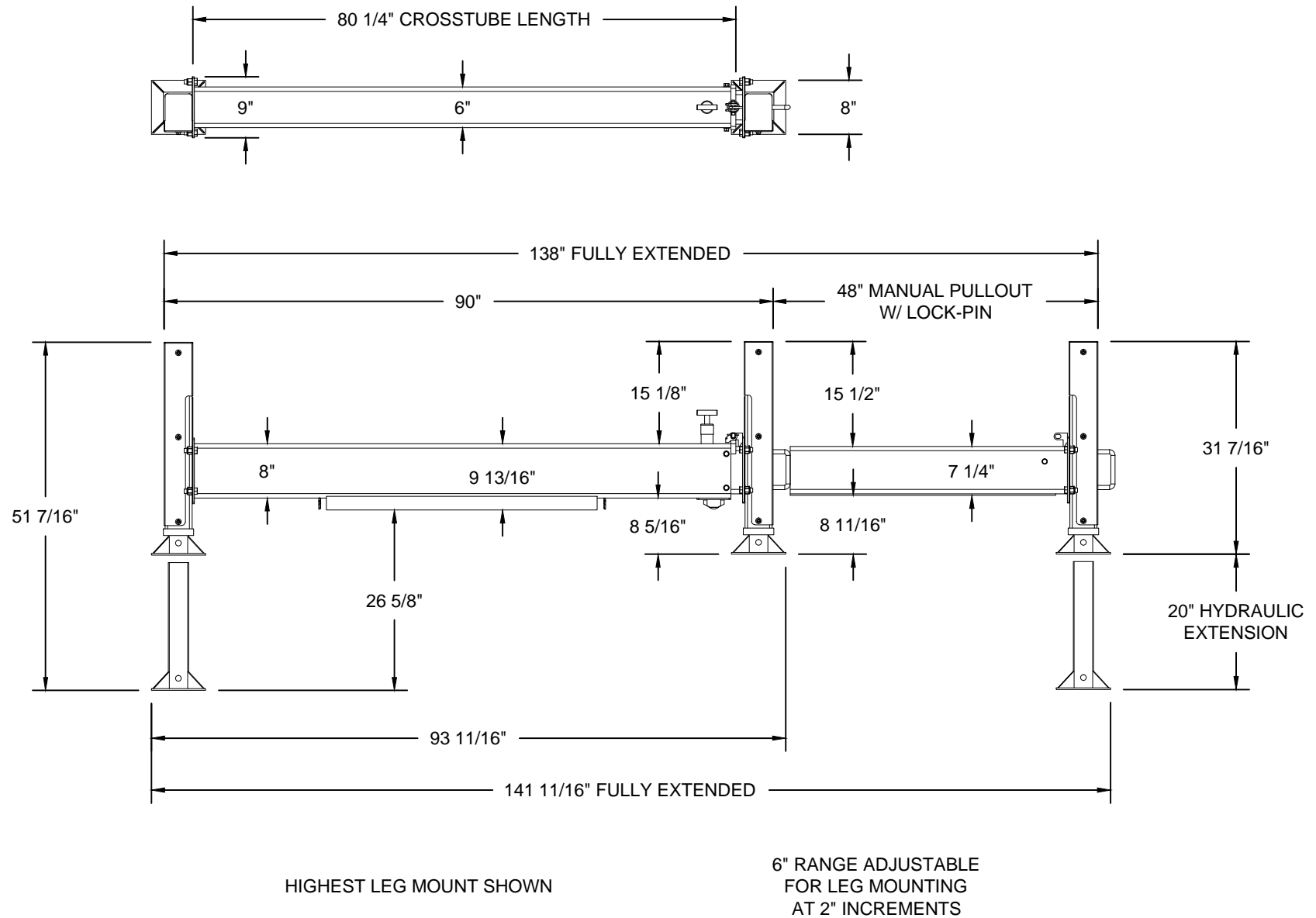
DATE
01-17-17

SUPERSEDES
-

PAGE

02

25481



VENCO VENTURO INDUSTRIES LLC
CINCINNATI, OHIO

OVERALL DIMENSIONS

25100-PH OUTRIGGER WITH SHORT LEGS

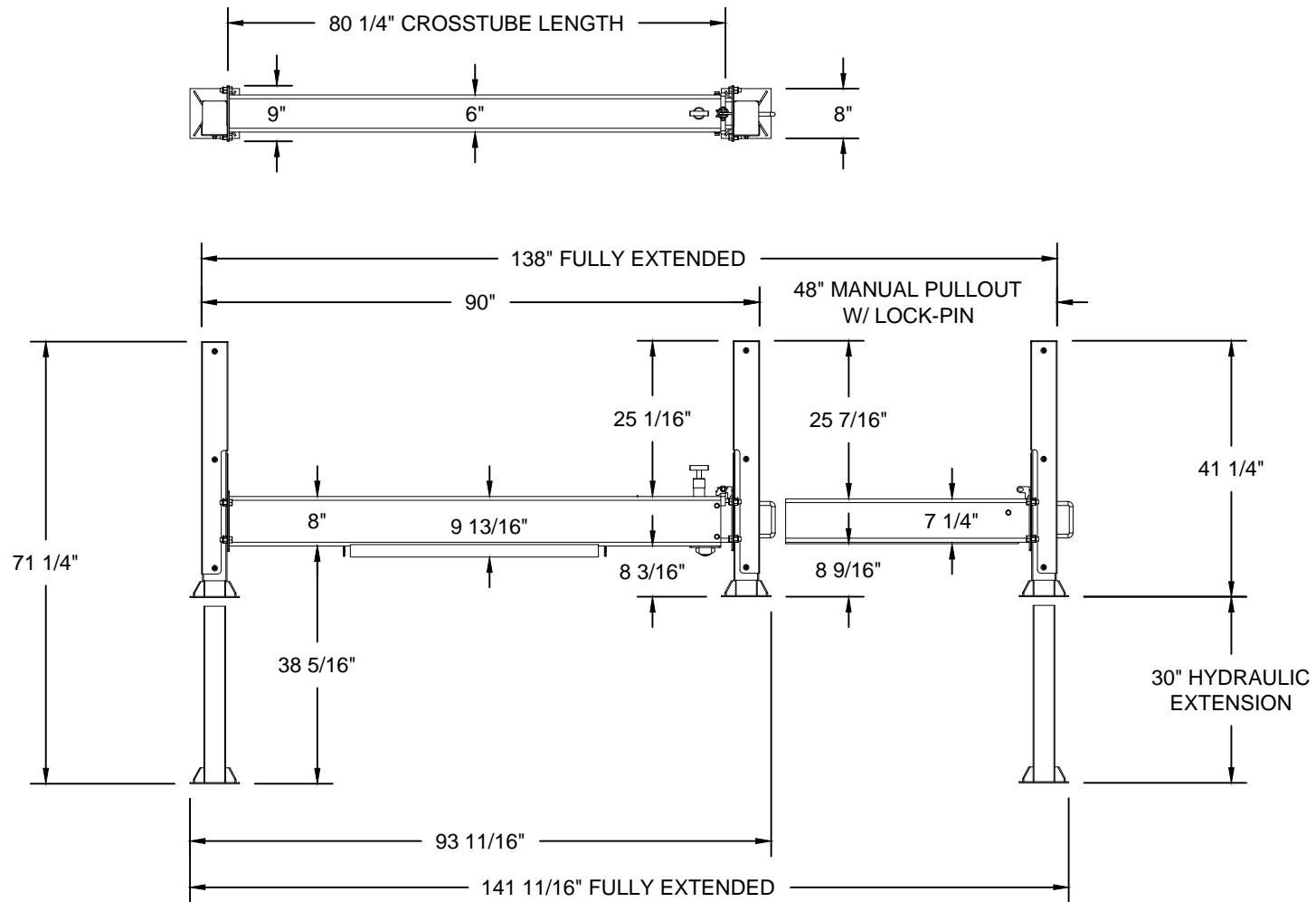
DATE
01-17-17

SUPERSEDES
-

PAGE

03

25482



HIGHEST LEG MOUNT SHOWN

6" RANGE ADJUSTABLE
FOR LEG MOUNTING
AT 2" INCREMENTS



VENCO VENTURO INDUSTRIES LLC
CINCINNATI, OHIO

OVERALL DIMENSIONS

25100-PH OUTRIGGER WITH LONG LEGS

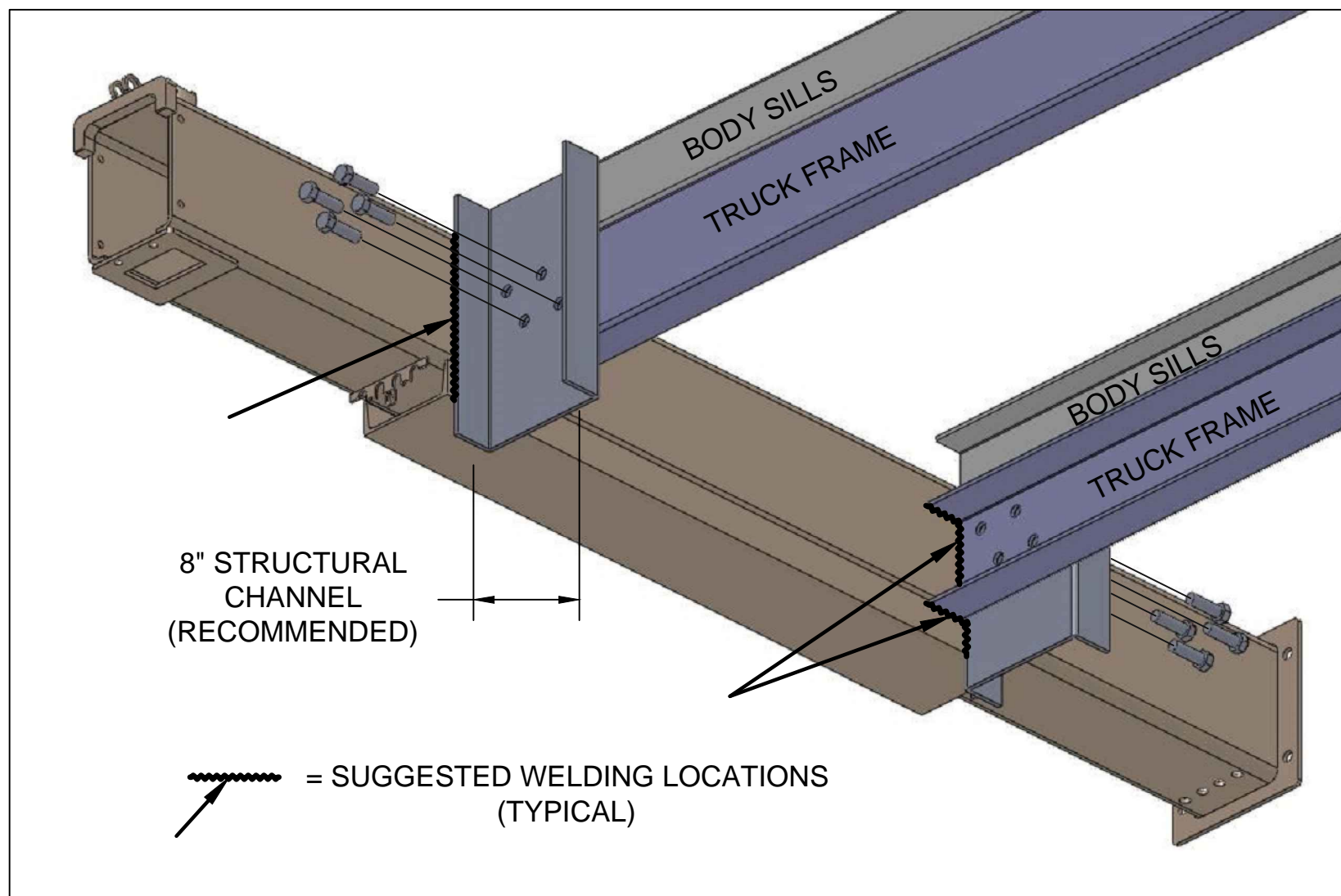
DATE
01-17-17

SUPERSEDES
-

PAGE

04

25483



VENCO VENTURO INDUSTRIES LLC
CINCINNATI, OHIO

RECOMMENDED MOUNTING TO TRUCK FRAME

25100 SERIES OUTRIGGERS

DATE
01-17-17

SUPERSEDES
-

PAGE

05

25484



REFERENCE PAGE 21 FOR ITEM NUMBERS



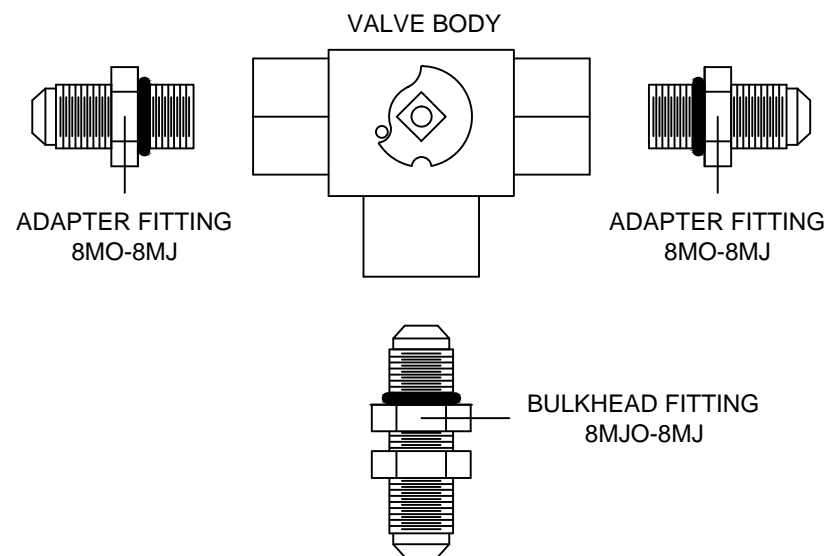
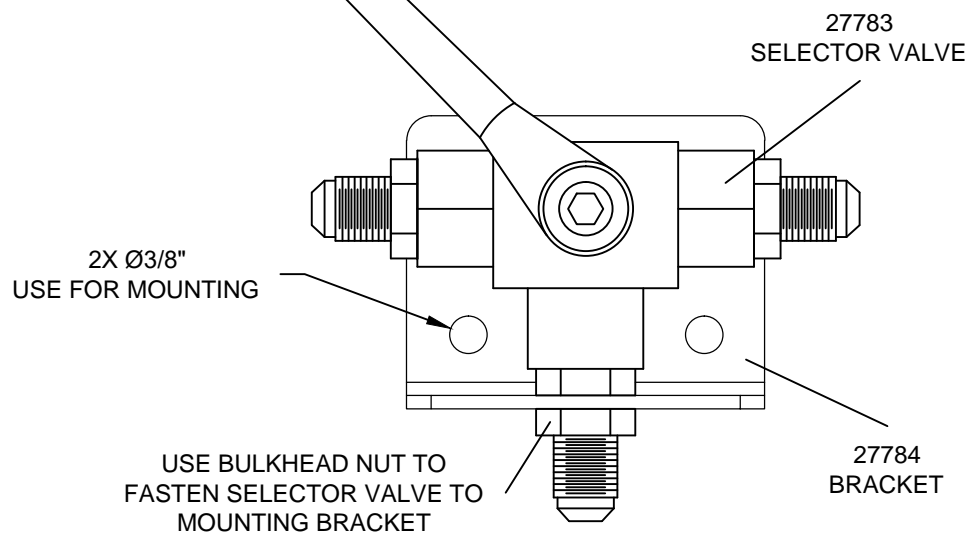
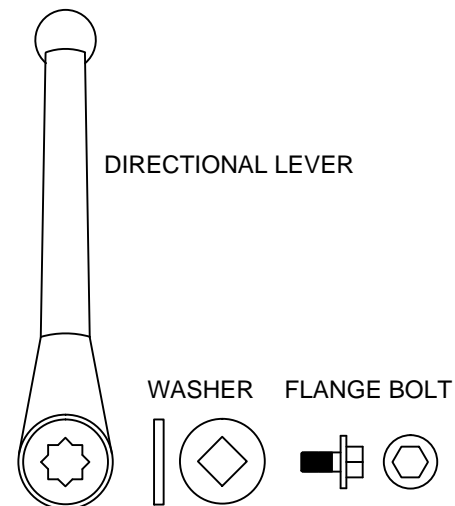
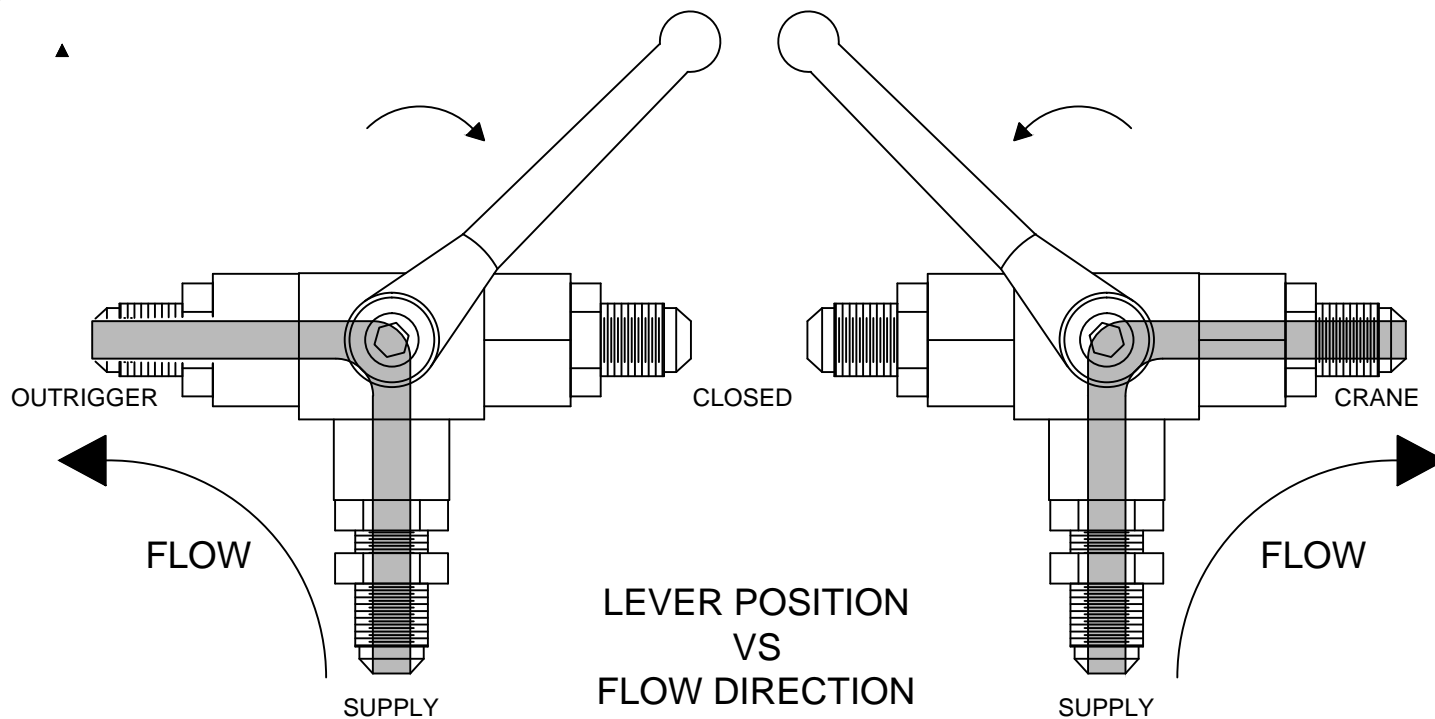
VENCO VENTURO INDUSTRIES LLC
CINCINNATI, OHIO

SMALL PARTS IMAGE

25100-PH OUTRIGGERS

▲	DATE
	01-17-17A
▲	SUPERSEDES
	03-23-16

PAGE	06
	25467



VENCO VENTURO INDUSTRIES LLC
CINCINNATI, OHIO

SELECTOR VALVE OVERVIEW

HYDRAULIC CRANES & STABILIZERS

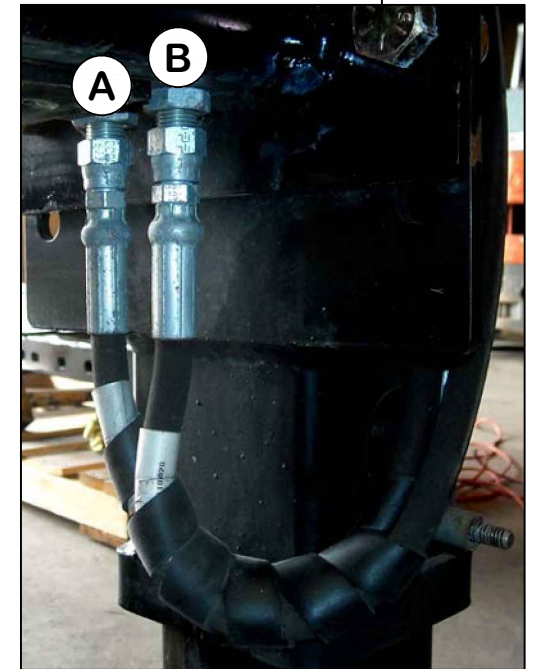
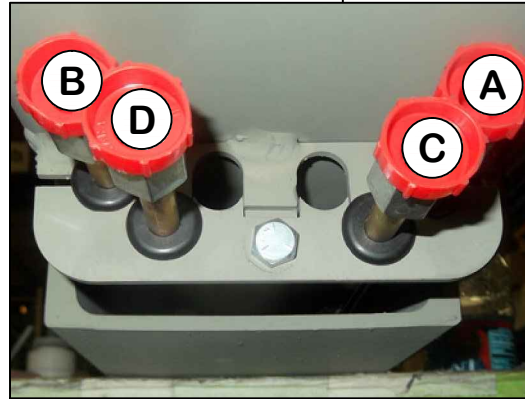
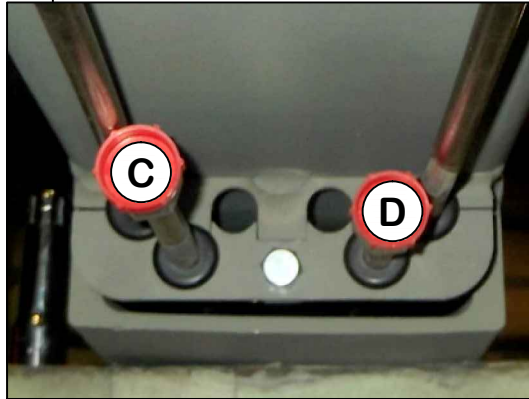
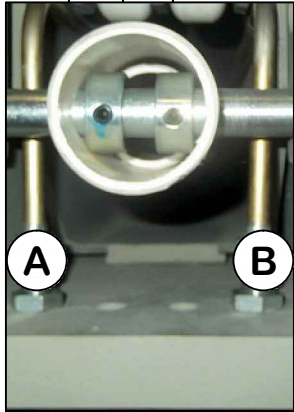
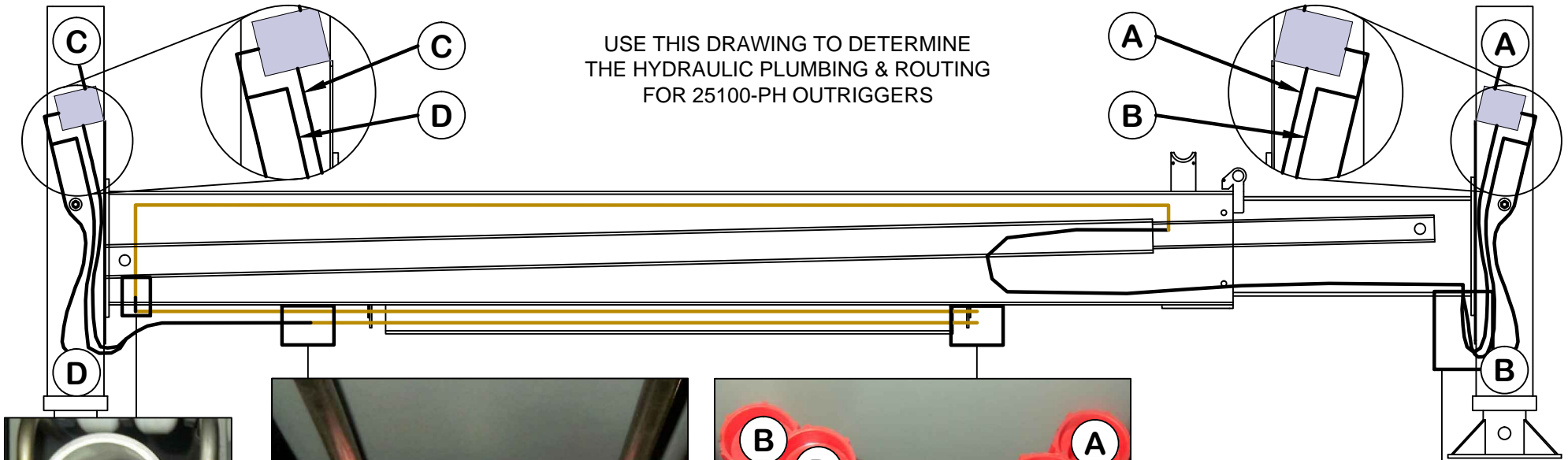
DATE
12-07-23B

SUPERSEDES
01-20-17A

SECTION
C200

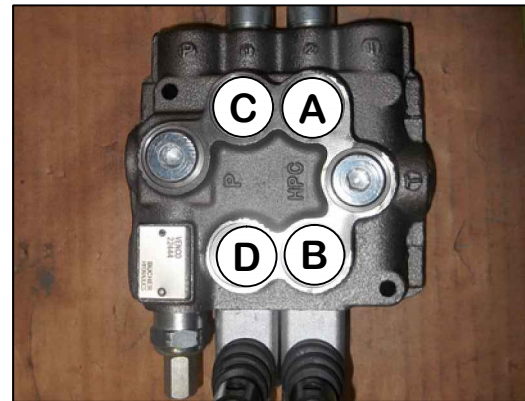
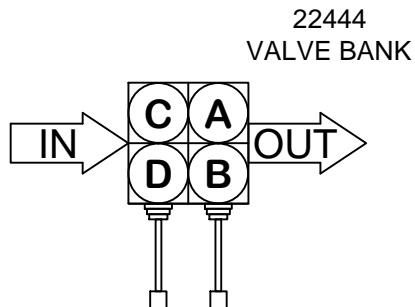
25447-1

USE THIS DRAWING TO DETERMINE
THE HYDRAULIC PLUMBING & ROUTING
FOR 25100-PH OUTRIGGERS



OUTRIGGER FUNCTIONS

A = RIGHT LEG DOWN
B = RIGHT LEG UP
C = LEFT LEG DOWN
D = LEFT LEG UP



VENCO VENTURO INDUSTRIES LLC
CINCINNATI, OHIO

HYDRAULIC MAPPING, 1 OF 3

25100-PH(E) OUTRIGGERS

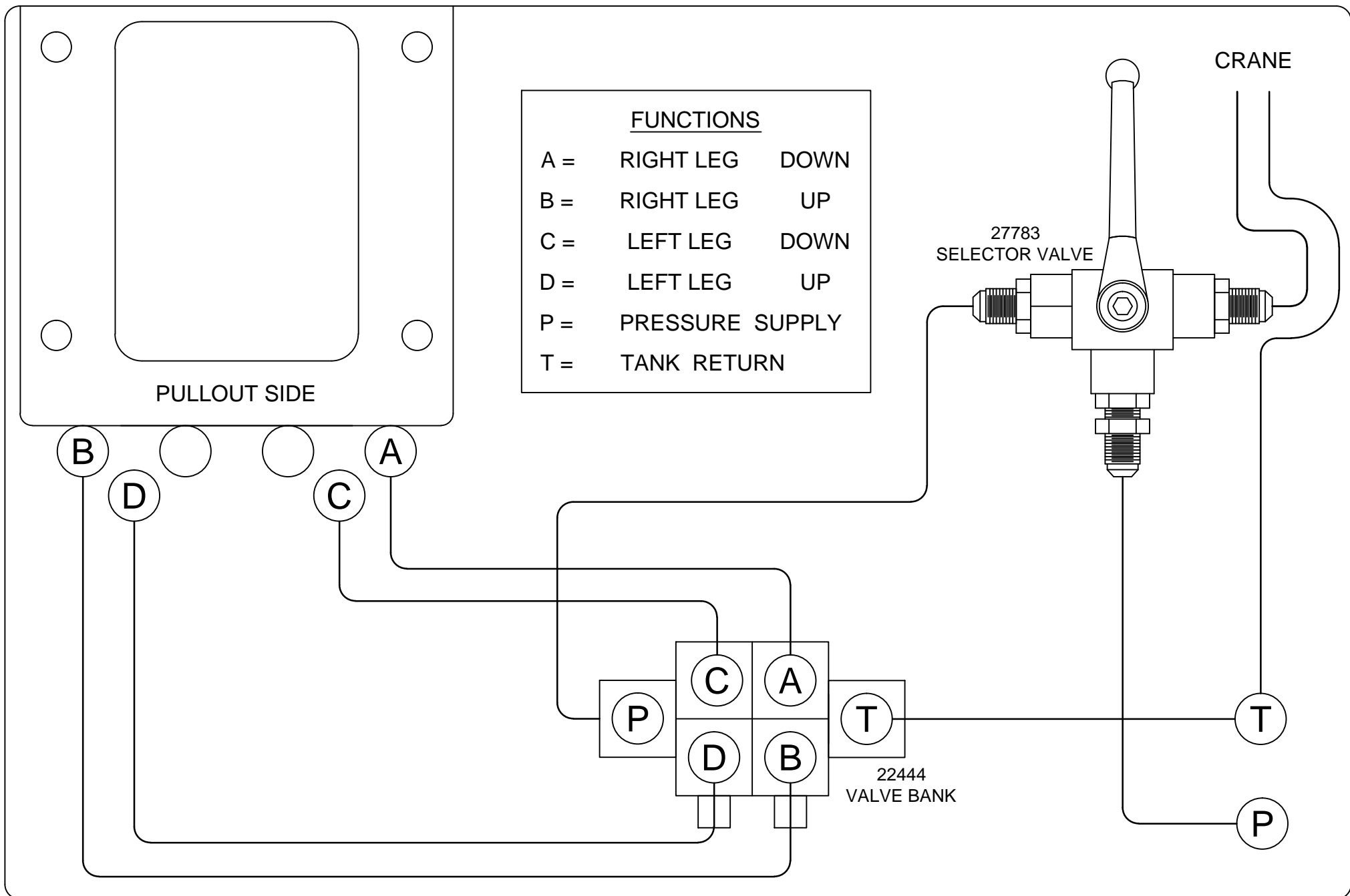
▲ DATE
01-17-17A

▲ SUPERSEDES
03-23-16

PAGE

08

25472



VENCO VENTURO INDUSTRIES LLC
CINCINNATI, OHIO

HYDRAULIC MAPPING, 2 OF 3

25100-PH OUTRIGGERS

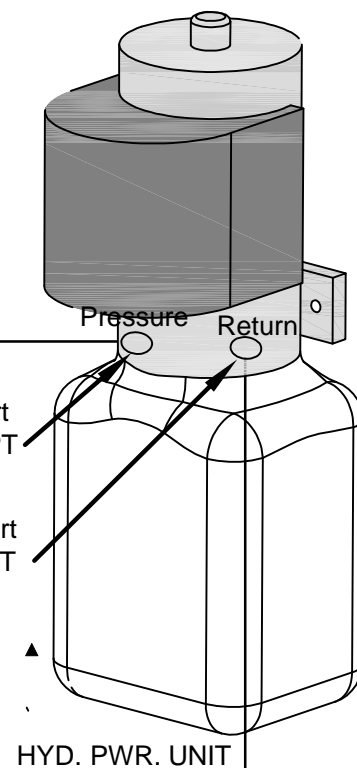
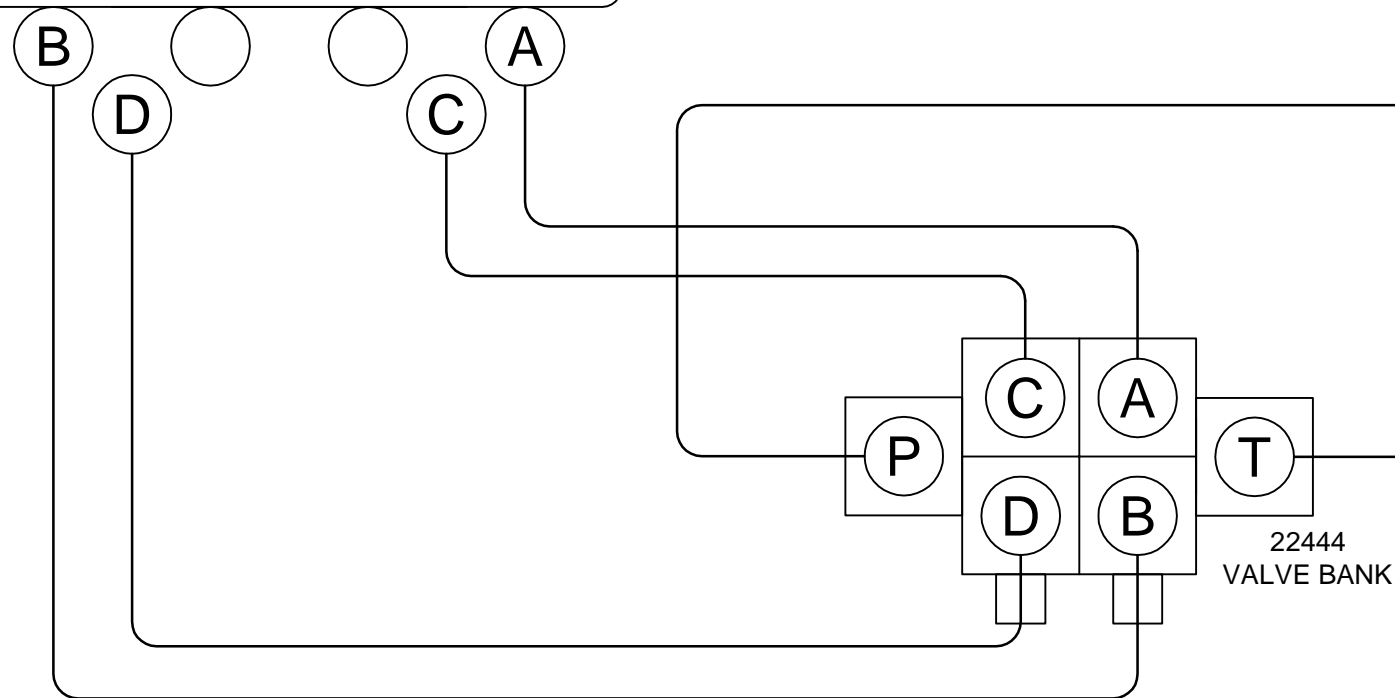
▲ DATE
01-18-17A
▲ SUPERSEDES
03-23-16

PAGE
09
25473

PULLOUT SIDE

FUNCTIONS

A = RIGHT LEG DOWN
 B = RIGHT LEG UP
 C = LEFT LEG DOWN
 D = LEFT LEG UP
 P = PRESSURE SUPPLY
 T = TANK RETURN



VENCO VENTURO INDUSTRIES LLC
 CINCINNATI, OHIO

HYDRAULIC MAPPING, 3 OF 3

25100-PHE OUTRIGGERS

DATE
 09-28-21B

SUPERSEDES
 01-18-17A

PAGE
 10

25474

BATTERY REQUIREMENTS

- 12 VOLT VEHICLE BATTERY REQUIREMENTS
 - 625 COLD CRANKING AMPS (AT 0° F)
 - 160 MINUTES RESERVE CAPACITY
 - 102 PLATES, 105 AMP-HR
- 12 VOLT AUXILIARY BATTERY REQUIREMENTS
 - 450 COLD CRANKING AMPS (AT 0° F)
 - 100 MINUTES RESERVE CAPACITY
 - 78 PLATES, 70 AMP-HR

NOTE: OPERATING WITH THE VEHICLE BATTERY 'ONLY' IS PERMISSIBLE, BUT NOT RECOMMENDED.

RECOMMENDED CIRCUIT BREAKER

HYDRAULIC POWER UNIT

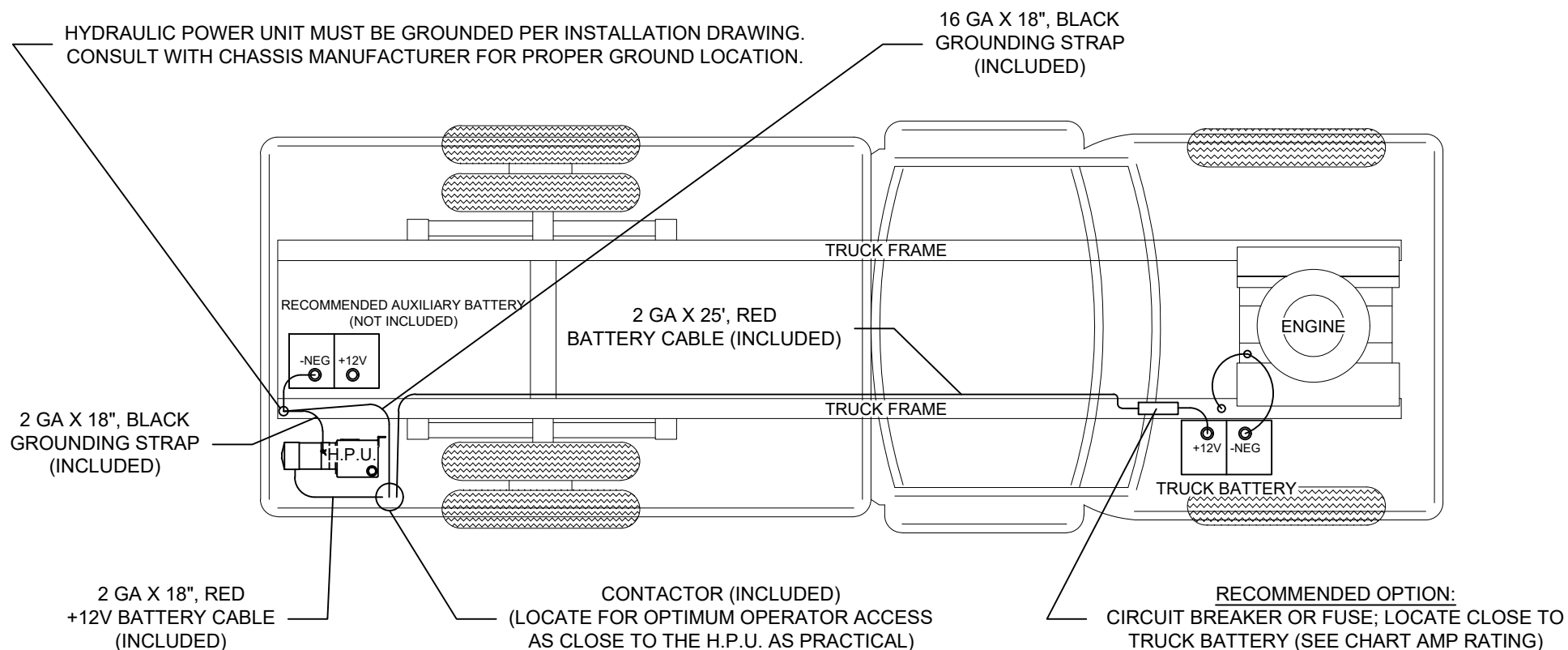
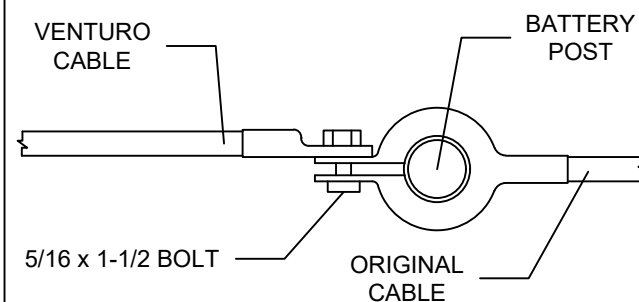
DESCRIPTION

PART NUMBER

250 AMP, MANUAL RESET

22946-250

RECOMMENDED BATTERY TERMINAL ATTACHMENT



VENCO VENTURO INDUSTRIES LLC
CINCINNATI, OHIO

BATTERY CABLES & COMPONENTS INSTALLATION

PHE OUTRIGGERS HYDRAULIC POWER UNIT & KIT

DATE
03-17-23B

SUPERSEDES
01-18-17A

PAGE

11

15660-1

RECOMMENDED DEPARTURE ANGLE



VENCO VENTURO INDUSTRIES LLC
CINCINNATI, OHIO

RECOMMENDED DEPARTURE ANGLE

REAR MOUNTED OUTRIGGERS

DATE
08-25-22A

SUPERSEDES
01-18-17

PAGE

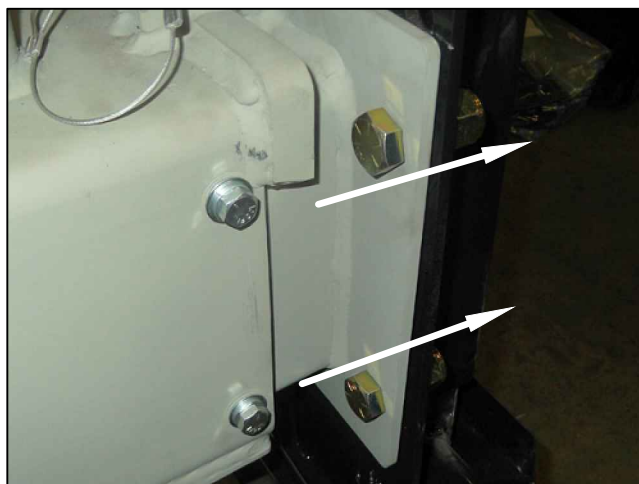
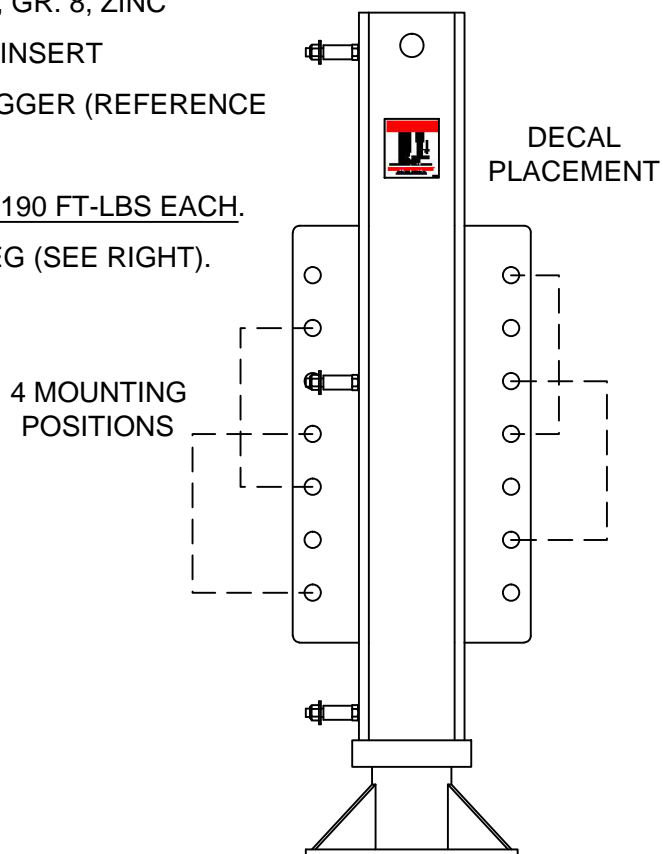
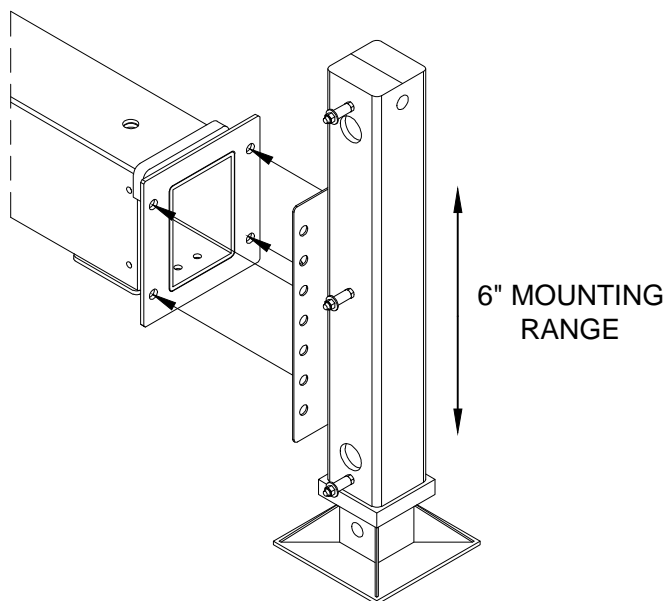
-

25485

MOUNTING THE OUTRIGGER LEGS, 25100 SERIES OUTRIGGERS

FOLLOW INSTRUCTIONS FOR MOUNTING 25100 SERIES OUTRIGGER LEGS.

- ▲ 1. DETERMINE PLACEMENT OF OUTRIGGER LEGS. REFER TO MODEL SPECIFIC 'OVERALL DIMENSIONS' PAGE.
2. USE HARDWARE & FASTENERS PROVIDED (REFERENCE IMAGE BELOW):
 - [8] HEX HEAD CAP SCREW; 5/8-11 X 1-1/2", GR. 8, ZINC
 - [8] LOCK NUT; 5/8-11, GR. 8, ZINC, NYLON-INSERT
3. INSERT BOLTS POINTING AWAY FROM OUTRIGGER (REFERENCE IMAGE BELOW).
4. TORQUE OUTRIGGER LEG BOLTS & NUTS TO 190 FT-LBS EACH.
5. PLACE 24964 DANGER DECAL, [1] ON EACH LEG (SEE RIGHT).



VENCO VENTURO INDUSTRIES LLC
CINCINNATI, OHIO

MOUNTING THE LEGS

25100 SERIES OUTRIGGERS

DATE
01-18-17A

SUPERSEDES
03-23-16

PAGE

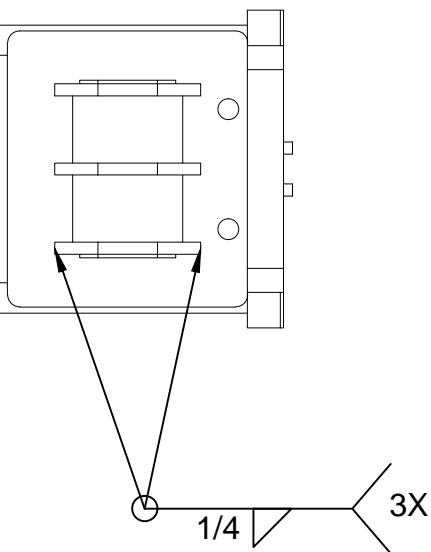
13

25428-3

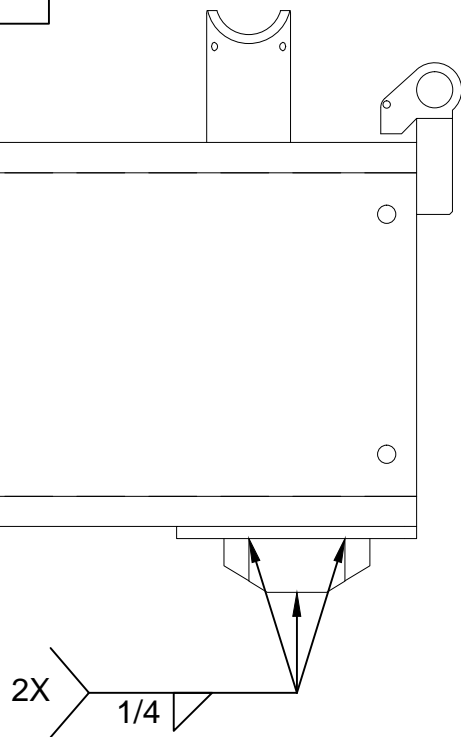
OVERVIEW OF WHEEL AXLE SUPPORTS & KEEPERS, 25100 SERIES OUTRIGGERS

REVIEW ILLUSTRATIONS & PROCEEDING STEPS BEFORE WELDING AXLE SUPPORTS & KEEPERS ON CROSSTUBE.

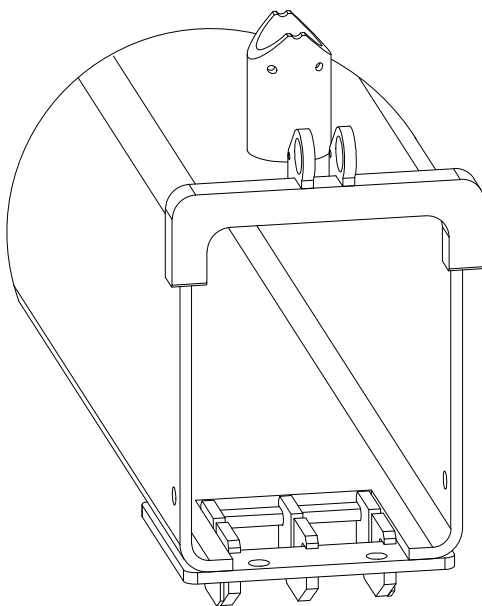
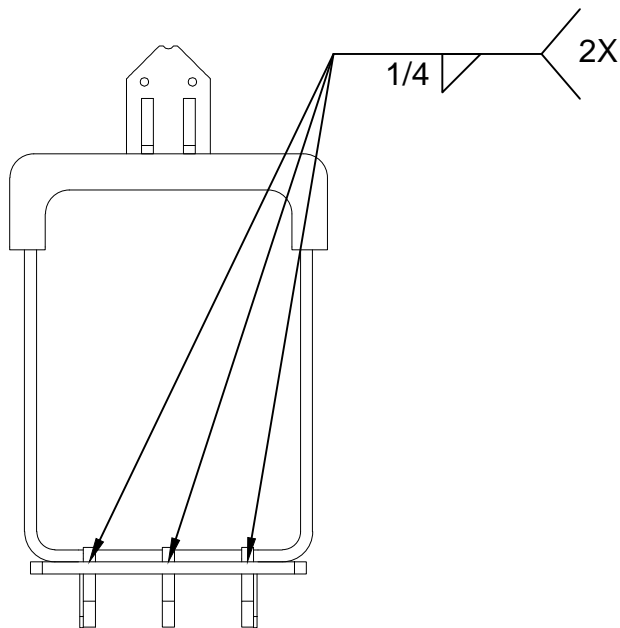
BOTTOM



SIDE



FRONT



VENCO VENTURO INDUSTRIES LLC
CINCINNATI, OHIO

WHEEL AXLE OVERVIEW

25100 SERIES OUTRIGGERS

DATE
01-18-17A

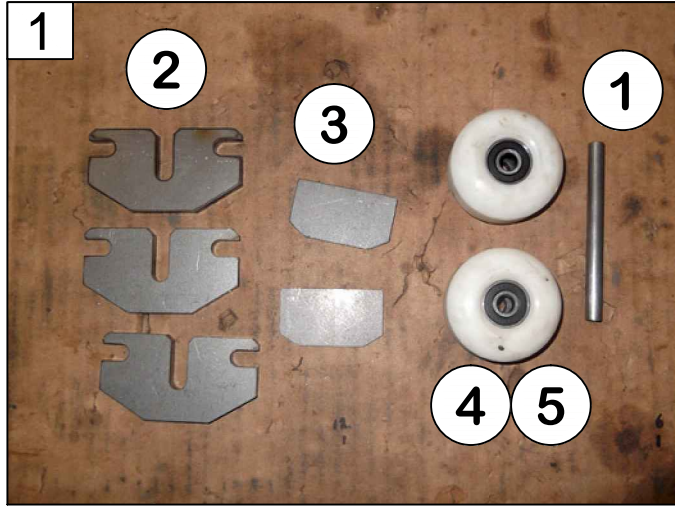
SUPERSEDES
03-23-16

PAGE

14

25422-1

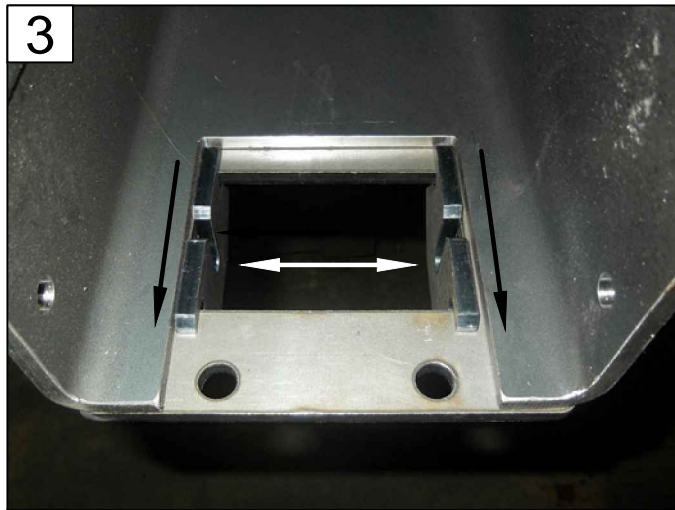
WELDING THE WHEEL AXLE SUPPORTS & KEEPERS ASSEMBLY



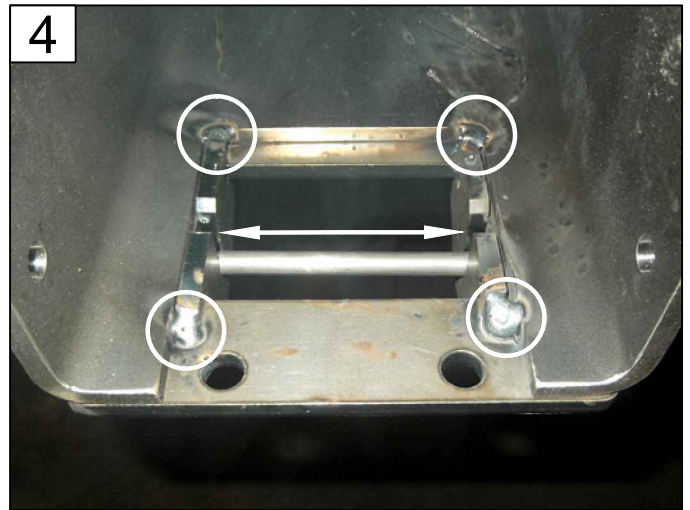
PARTS NEEDED FOR WELDING AXLE SUPPORTS & KEEPERS
▲ REFERENCE PAGE 21 FOR ITEM NUMBERS



REFERENCE FOR PLACING AXLE SUPPORTS



PLACE [2] AXLE SUPPORTS FLUSH TO SIDES
PULL SUPPORTS BACK EVENLY



MAKE [4] TACKS ON ENDS OF SUPPORTS
ENSURE AXLE ROD FITS



PLACE LAST AXLE SUPPORT CENTERED



PLACE EACH AXLE KEEPER ON OUTSIDE OF SUPPORTS
FLUSH WITH EDGES EVEN



VENCO VENTURO INDUSTRIES LLC
CINCINNATI, OHIO

WHEEL AXLE WELDING ▲

25100 SERIES OUTRIGGERS

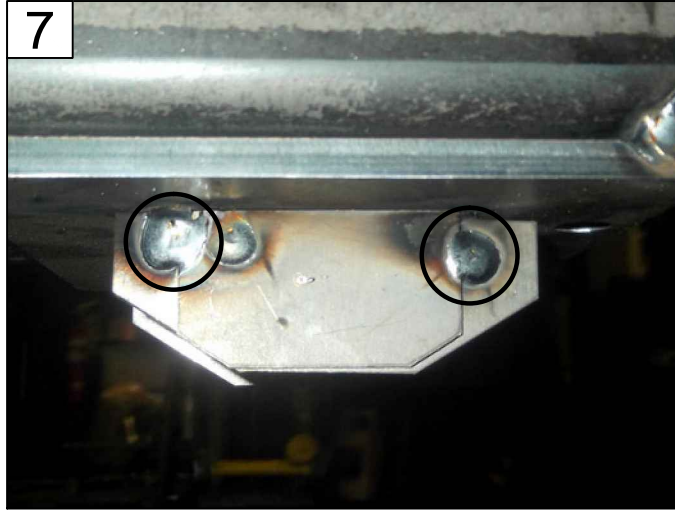
DATE
01-18-17A

SUPERSEDES
03-23-16

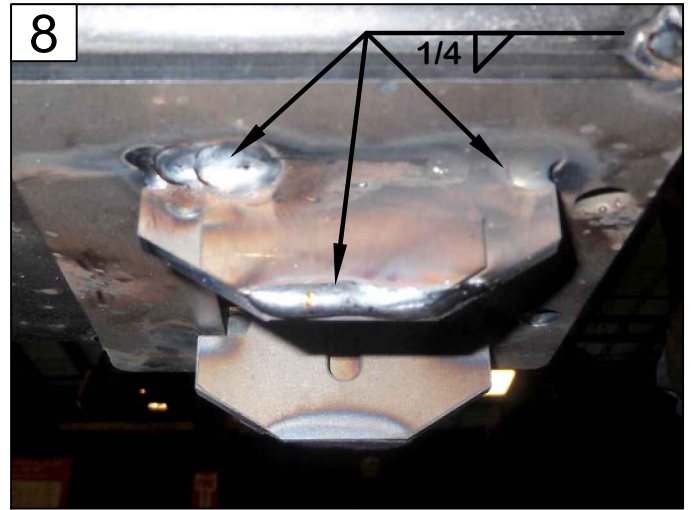
PAGE
15 ▲

25423-1

WELDING THE WHEEL AXLE SUPPORTS & KEEPERS ASSEMBLY



MAKE [2] TACKS ON EACH AXLE KEEPER



WELD EACH KEEPER TO CROSSTUBE & AXLE SUPPORTS



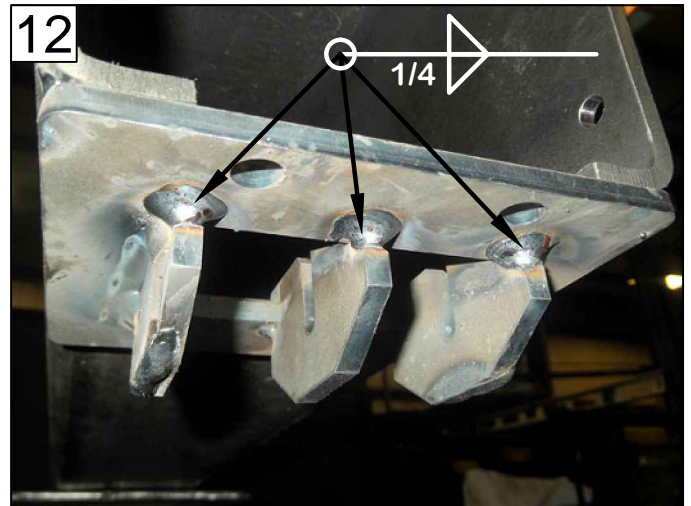
SETUP WHEELS & AXLE



KEEP LAST AXLE SUPPORT CENTER
USE WHEELS & AXLE TO ENSURE FIT



MAKE [2] TACKS TO CENTER SUPPORT



FINISH WELDING SUPPORTS UNDERNEATH
ALL AROUND



VENCO VENTURO INDUSTRIES LLC
CINCINNATI, OHIO

WHEEL AXLE WELDING

25100 SERIES OUTRIGGERS

DATE
01-18-17A

SUPERSEDES
03-23-16

PAGE
16

25424-1

ASSEMBLY OF 25100-PH OUTRIGGER WITH LESS-CROSSTUBE CONFIGURATION

13



SET UP WHEELS & BEARINGS WITH AXLES, [2] SETS
PAGE 21 - ITEMS 1, 4, & 5

14



INSERT [1] SET INTO PULLOUT

15



INSERT [1] SET INTO CROSSTUBE

16



SLIDE PULLOUT INTO CROSSTUBE

17



FASTEN NUT BAR RETAINERS INTO CROSSTUBE
PAGE 21 - ITEMS 7, 8, & 9

18



PUSH PULLOUT AGAINST CROSSTUBE



VENCO VENTURO INDUSTRIES LLC
CINCINNATI, OHIO

LESS-CROSSTUBE ASSY

25100-PH OUTRIGGERS

DATE
01-18-17A

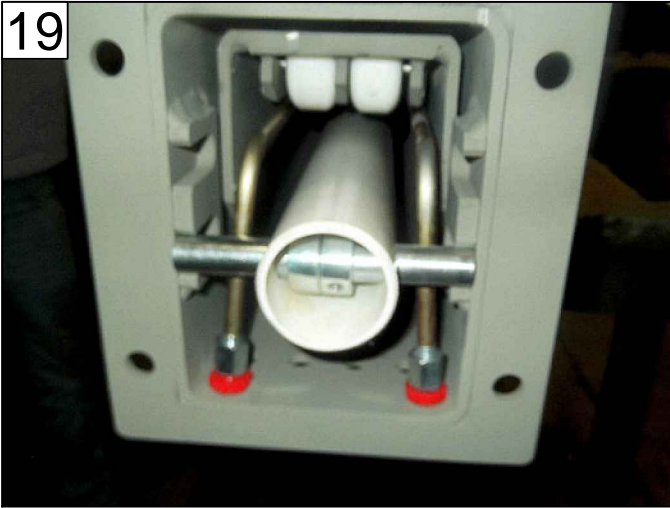
SUPERSEDES
03-23-16

PAGE
17

25468

ASSEMBLY OF 25100-PH OUTRIGGER WITH LESS-CROSSTUBE CONFIGURATION

19



INSERT SHAFT THROUGH PIPE, LOCK COLLARS INSIDE
PAGE 21 - ITEMS 14 & 15

20



PUSH SHAFT INTO BOTTOM SLOT OF CROSSTUBE
LOCTITE & FASTEN COLLARS CENTER & FLUSH

21



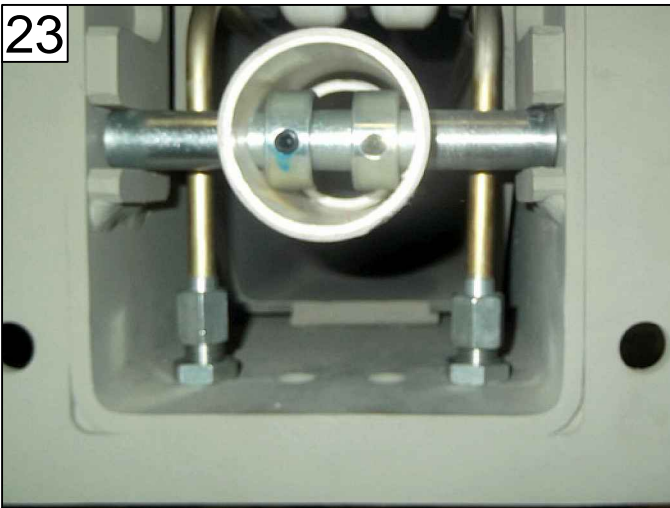
FASTEN BULKHEADS IN HOLES FURTHEST APART
PAGE 21 - ITEM 13

22



FASTEN 60" HYDRAULIC TUBES TO BULKHEADS
PAGE 21 - ITEM 22

23



FASTEN INNER HYDRAULIC TUBES TO BULKHEADS

24



PLACE 47" HYDRAULIC TUBES
PAGE 21 - ITEM 23



VENCO VENTURO INDUSTRIES LLC
CINCINNATI, OHIO

LESS-CROSSTUBE ASSY

25100-PH OUTRIGGERS

DATE
01-18-17A

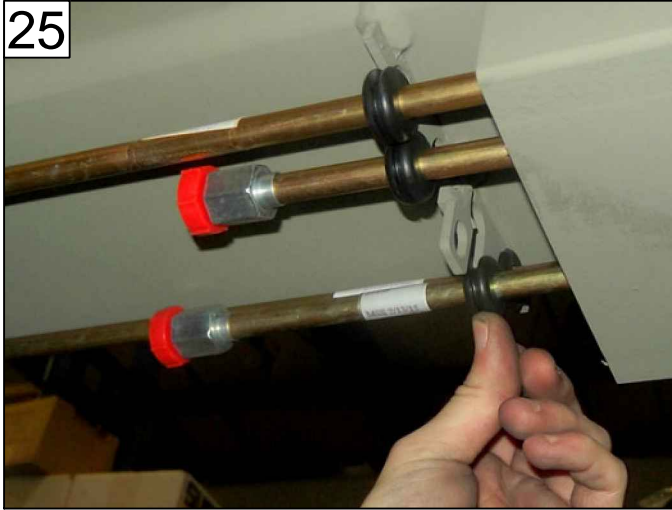
SUPERSEDES
03-23-16

PAGE
18

25469

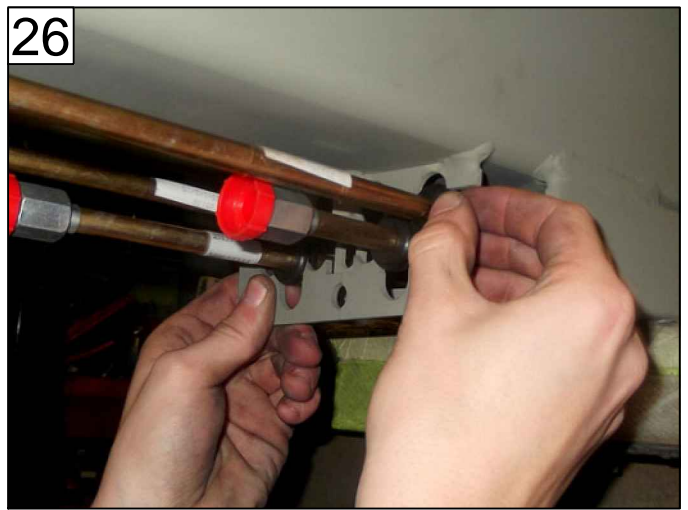
ASSEMBLY OF 25100-PH OUTRIGGER WITH LESS-CROSSTUBE CONFIGURATION

25



PUSH GROMMETS AROUND TUBES
PAGE 21 - ITEM 24

26



CLAMP AROUND GROMMETS
PAGE 21 - ITEM 25

27



FASTEN CLAMP, ITEMS 26 & 27
REPEAT STEPS 25 TO 27 FOR OPPOSITE CLAMP

28



LINE UP LOCK-PIN HOLES FOR PULLOUT & CROSSTUBE

29



INSERT ROLL PINS
PAGE 21 - ITEM 10

30



GREASE T-HANDLE'S SPRING
PAGE 21 - ITEM 11



VENCO VENTURO INDUSTRIES LLC
CINCINNATI, OHIO

LESS-CROSSTUBE ASSY

25100-PH OUTRIGGERS

DATE
01-18-17A

SUPERSEDES
03-23-16

PAGE
19

25470

ASSEMBLY OF 25100-PH OUTRIGGER WITH LESS-CROSSTUBE CONFIGURATION



31
PLACE T-HANDLE
PUSH SPRING-LOADED WASHER DOWN



32
DRIVE ROLL PINS THROUGH
FLUSH ON BOTH ENDS



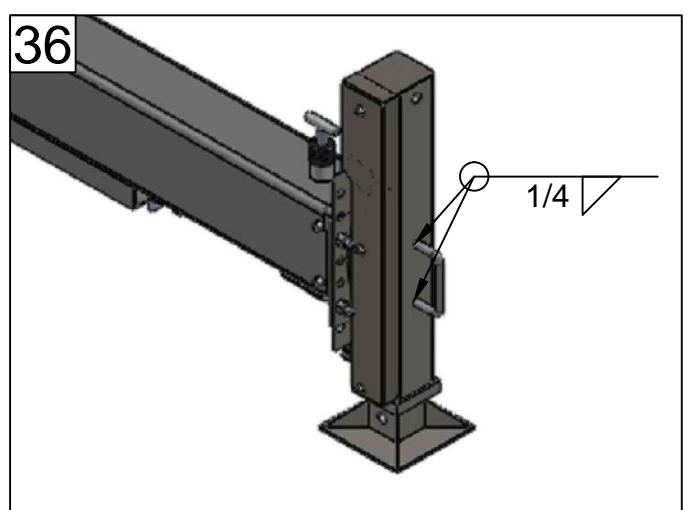
33
COVER WITH RUBBER BOOT



34
ATTACH SECURITY PIN'S KEY-RING ON EITHER TAB
PAGE 21 - ITEM 12



35
ENSURE PIN IS THROUGH ALL TABS & CLAMP MEETS END



36
PROCEED TO MOUNTING THE LEGS & HYDRAULICS
WELD C-HANDLE ON PULLOUT LEG, CENTER TO PULLOUT



VENCO VENTURO INDUSTRIES LLC
CINCINNATI, OHIO

LESS-CROSSTUBE ASSY

25100-PH OUTRIGGERS

DATE
01-18-17A

SUPERSEDES
03-23-16

PAGE
20

25471

SECTION 400

REPLACEMENT PARTS



VENCO VENTURO INDUSTRIES LLC
CINCINNATI, OHIO

PARTS BREAKDOWN, 25100-PH OUTRIGGERS (LESS-CROSSTUBE PARTS INCLUDED)

25100-PH OUTRIGGERS PARTS BREAKDOWN		SHORT LEGS	LONG LEGS	LESS-CROSSTUBE PARTS INCLUDED
#	DESCRIPTION	QTY		PART #
1	AXLE; WHEEL	2	2	25090
2	AXLE SUPPORT; WHEEL AXLE	3	3	25097
3	AXLE KEEPER; WHEEL AXLE	2	2	25091
4	WHEEL; MANUAL PULLOUT	4	4	25082
5	BEARING; WHEEL	8	8	25078
6	NUT BAR RETAINER; MANUAL PULLOUT	2	2	25065
▲ 7	HEX HEAD CAP SCREW; 3/8-16 X 1/2, GR. 5, ZINC	4	4	IHHCS03816050
8	LOCK WASHER; 3/8, GR. 5, ZINC	4	4	ILWSH-038
▲ 9	-	-	-	-
10	ROLL PIN; 3/16 X 1-3/8, STAINLESS STEEL	2	2	IRPIN-019138-SS
11	T-HANDLE; LOCKING PIN, MANUAL PULLOUT	1	1	22668
12	SECURITY PIN; CLAMPING PIN & KEY-RING	1	1	24981
13	BULKHEAD FITTING; 90°, 6MJ-6MJ	2	2	H2701-0606
14	SHAFT; TELESCOPIC PVC PIPE TO CROSSTUBE	1	1	25051
15	LOCK COLLARS; SHAFT, PVC PIPE	2	2	00210
16	HYDRAULIC LEG; SHORT, LEFT-SIDE	1	-	SEE PAGES 25 & 26
17	HYDRAULIC LEG; SHORT, RIGHT-SIDE	1	-	SEE PAGES 25 & 26
18	HYDRAULIC LEG; LONG, LEFT-SIDE	-	1	SEE PAGES 25 & 26
19	HYDRAULIC LEG; LONG, RIGHT-SIDE	-	1	SEE PAGES 25 & 26
20	HEX HEAD CAP SCREW; 5/8-11 X 1-1/2, GR. 8, ZINC	8	8	IHHCS06311150-8
21	LOCK NUT; 5/8-11, GR. 8, ZINC, NYLON-INSERT	8	8	ILNUT-06311-8
22	HYDRAULIC TUBE; 60" LONG	2	2	25138
23	HYDRAULIC TUBE; 47" LONG	2	2	25139
24	GROMMET; BLACK RUBBER, HYDRAULIC TUBES	8	8	14883
25	CLAMP PLATE; HYDRAULIC TUBES & GROMMETS	2	2	25157
26	HEX HEAD CAP SCREW; 5/16-18 X 3/4, GR. 5, ZINC	2	2	IHHCS03118075
27	LOCK NUT; 5/16-18, GR. 5, ZINC, NYLON-INSERT	2	2	ILNUT-03118
28	C-HANDLE; MANUAL PULLOUT, RIGHT LEG	1	1	19344
29	DECAL; CRUSHING INJURY, SEE 'MOUNTING THE LEGS'	2	2	24964
30	VALVE BLOCK; 2-SPOOL, OUTRIGGER FUNCTIONS	1	1	22444
31	ADAPTER FITTING; STRAIGHT, 8MJ-8MO	2	2	H6400-0808
32	ADAPTER FITTING; STRAIGHT, 6MJ-8MO	4	4	H6400-0608
33	SELECTOR VALVE; HYDRAULIC PRESSURE DIRECTION	1	1	27783
34	BRACKET; SELECTOR VALVE, MOUNTING	1	1	27784
35	OUTRIGGER & ACCESSORIES MANUAL	1	1	INST-21024
36	CROSSTUBE; 25100 SERIES OUTRIGGERS	1	1	25085



VENCO VENTURO INDUSTRIES LLC
CINCINNATI, OHIO

PARTS BREAKDOWN

25100-PH OUTRIGGERS

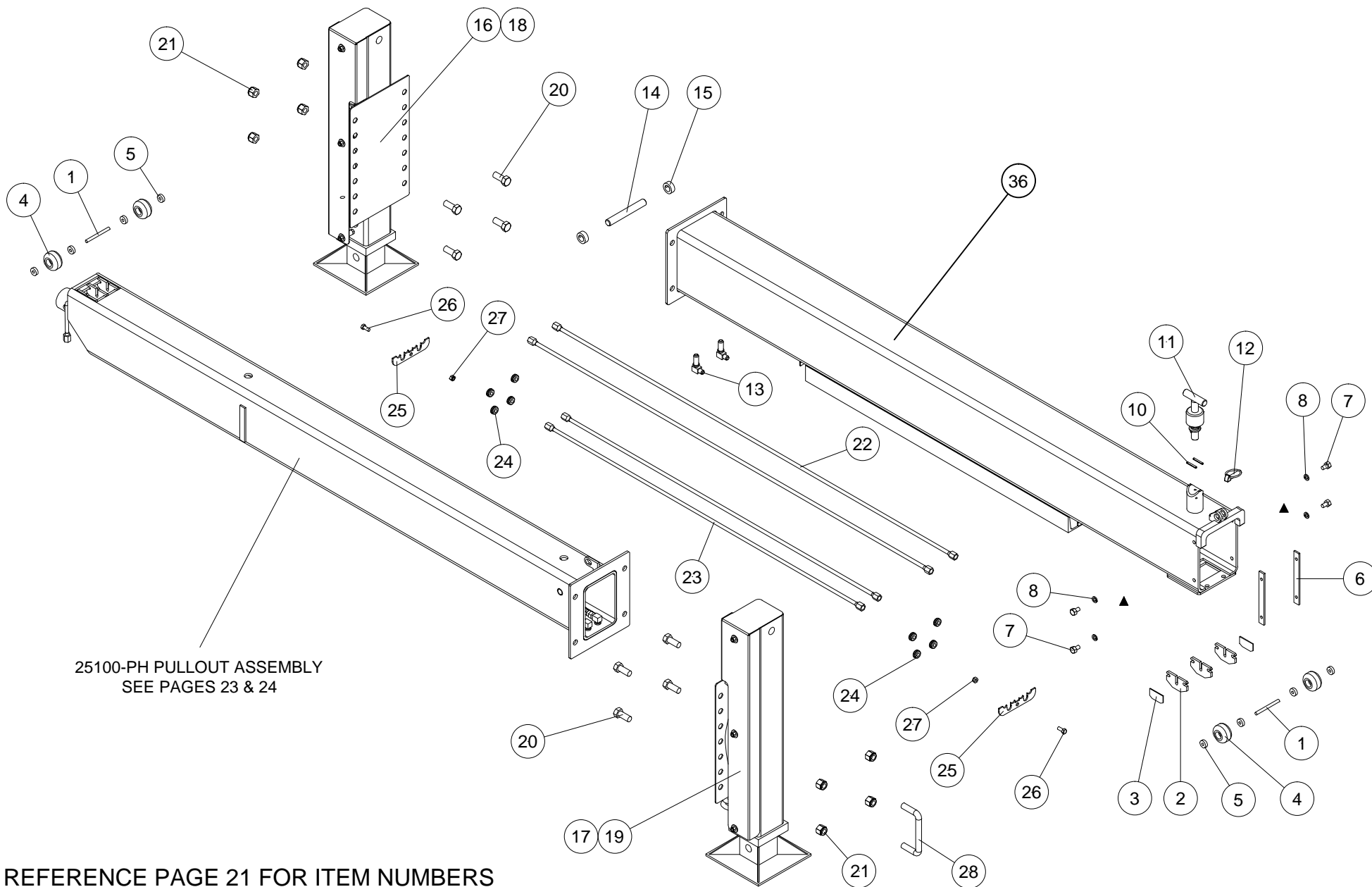
DATE
07-02-25C

SUPERSEDES
01-04-18B

PAGE

21

25461



REFERENCE PAGE 21 FOR ITEM NUMBERS



VENCO VENTURO INDUSTRIES LLC
CINCINNATI, OHIO

PARTS BREAKDOWN (LESS-CROSSTUBE PARTS INCLUDED)

25100-PH OUTRIGGERS

DATE
07-02-25B

SUPERSEDES
01-18-17A

PAGE

22

25462

25100-PH PULLOUT ASSEMBLY PARTS BREAKDOWN			
#	DESCRIPTION	QTY	PART #
1	PULLOUT; 4', 25100-PH(X) CONFIGURATION	1	25087-2
2	PVC PIPE; OUTER, TELESOPING	1	25079
3	PVC PIPE; INNER, TELESOPING	1	25092
4	HYDRAULIC TUBE; RIGHT LEG, DOWN	1	25137
5	HYDRAULIC TUBE; RIGHT LEG, UP	1	25136
6	HOSE ASSEMBLY; RIGHT LEG, UP & DOWN	2	25149
7	SHAFT; PULLOUT & INNER PVC PIPE	1	25052
8	LOCK COLLAR; SHAFT, PVC PIPE	4	00210
9	BULKHEAD FITTING; 90°, 6MJ-6MJ, LOCK NUT	2	H2701LN-0606



VENCO VENTURO INDUSTRIES LLC
CINCINNATI, OHIO

PARTS BREAKDOWN

DATE

01-18-17A

PAGE

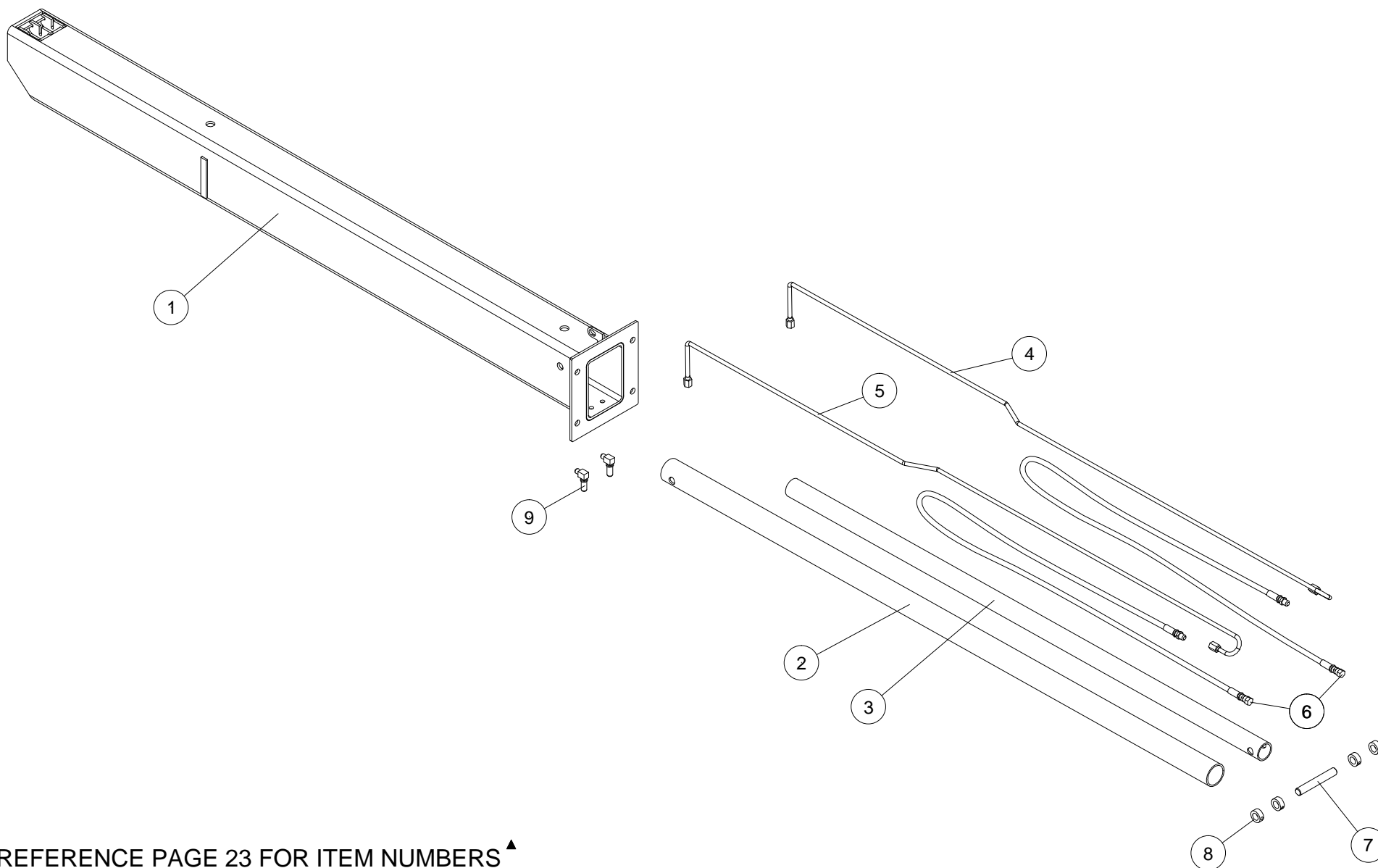
23

25100-PH PULLOUT ASSY


SUPERSEDES

03-23-16

25463



REFERENCE PAGE 23 FOR ITEM NUMBERS ▲

 VENTURO [®] VENCO VENTURO INDUSTRIES LLC CINCINNATI, OHIO	PARTS BREAKDOWN		▲	DATE	PAGE	▲
	25100-PH PULLOUT ASSEMBLY			01-18-17A	24	
				SUPERSEDES		
				03-23-16	25464	

PARTS BREAKDOWN, 25100 SERIES HYDRAULIC LEGS ASSEMBLY

25100 SERIES OUTRIGGERS HYDRAULIC LEGS ASSEMBLY PARTS BREAKDOWN		SHORT		LONG		
		LEFT	RIGHT	LEFT	RIGHT	
#	DESCRIPTION	QUANTITY				PART #
1	HYDRAULIC LEG; SHORT, LEFT-SIDE	1	-	-	-	25064-1
2	HYDRAULIC LEG; SHORT, RIGHT-SIDE	-	1	-	-	25064-2
3	HYDRAULIC LEG; LONG, LEFT-SIDE	-	-	1	-	25055-1
4	HYDRAULIC LEG; LONG, RIGHT-SIDE	-	-	-	1	25055-2
5	COVER; SHORT LEG, LEFT-SIDE	1	-	-	-	25069-1
6	COVER; SHORT LEG, RIGHT-SIDE	-	1	-	-	25069-2
7	COVER; LONG LEG, LEFT-SIDE	-	-	1	-	25068-1
8	COVER; LONG LEG, RIGHT-SIDE	-	-	-	1	25068-2
9	HOSE ASSEMBLY; 16", 4FX-4FX, SHORT LEG, RETURN	1	1	-	-	25063
10	HOSE ASSEMBLY; 25-3/8", 4FX-4FX, LONG LEG, RETURN	-	-	1	1	25061
11	HOSE ASSEMBLY; 47", 4FX-6MJ, SHORT LEG, LEFT-SIDE	2	-	-	-	25151
12	HOSE ASSEMBLY; 27", 4FX-6FX, SHORT LEG, RIGHT-SIDE	-	2	-	-	25147
13	HOSE ASSEMBLY; 54", 4FX-6MJ, LONG LEG, LEFT-SIDE	-	-	2	-	25153
14	HOSE ASSEMBLY; 37", 4FX-6FX, LONG LEG, RIGHT-SIDE	-	-	-	2	25152
15	VALVE BLOCK; CHECK BODY & CARTRIDGE	1	1	1	1	22765
16	SPACER; HYDRAULIC LEG COVERS	3	3	3	3	25070
17	FLAT WASHER; 5/16, GR. 5, ZINC	3	3	3	3	!FWSH-031
18	LOCK NUT; 5/16-18, GR. 5, ZINC, NYLON-INSERT	3	3	3	3	ILNUT-03118
19	ADAPTER FITTING; 90° ELBOW, 6MO-6MJ	1	1	1	1	H6801L-0606
20	ADAPTER FITTING; COUPLING SWIVEL, 6FJX-6FJX	1	1	1	1	H6565-0606
21	ADAPTER FITTING; ADAPTER, 6MJ-8MP	1	1	1	1	H2404-0608
22	ADAPTER FITTING; 90° ELBOW, 6MO-4MJ	1	1	1	1	H6801-0406
23	ADAPTER FITTING; T-SHAPE, 4MJ-4FJX-4MJ	1	1	1	1	H6602-040404
24	ADAPTER FITTING; CONNECTOR, 6MO-4MJ	1	1	1	1	H6400-0406
25	ADAPTER FITTING; 90° ELBOW, 4MJ-4FX	1	1	1	1	H6500-0404
26	ADAPTER FITTING; 90° ELBOW, 4MO-4MJ	1	1	1	1	H6801LL-0404



VENCO VENTURO INDUSTRIES LLC
CINCINNATI, OHIO

PARTS BREAKDOWN

25100 SERIES HYD. LEGS

DATE
01-18-17A

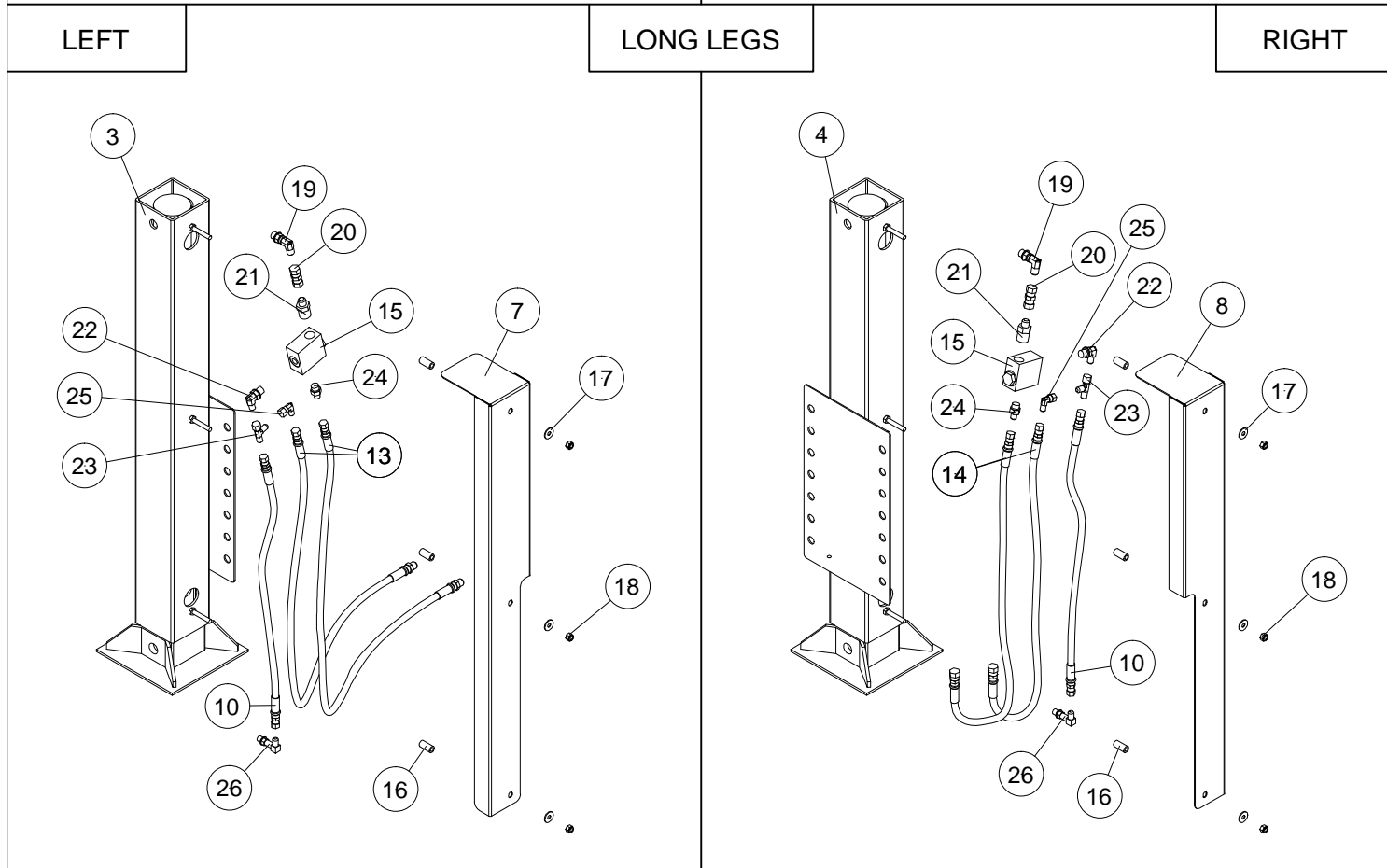
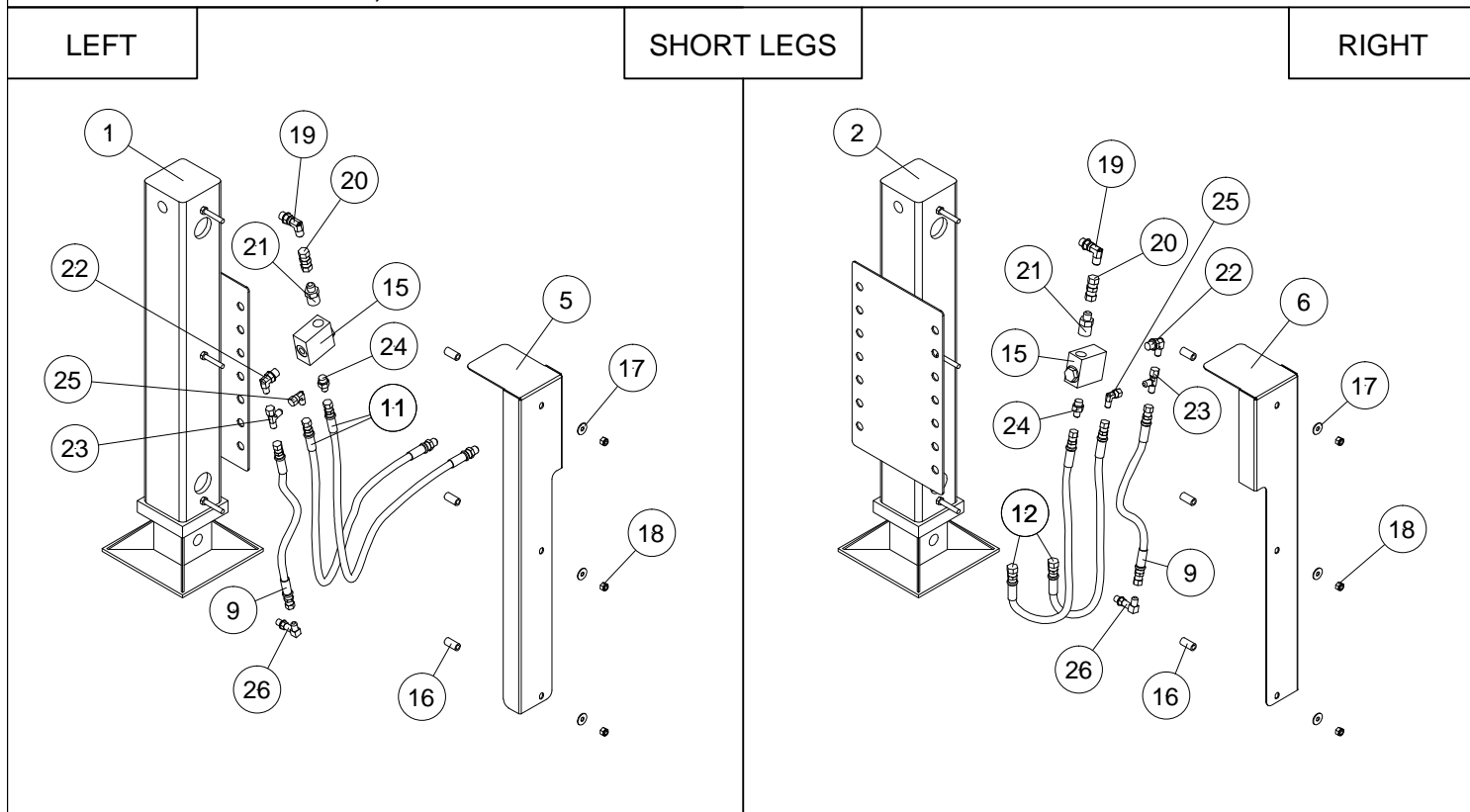
SUPERSEDES
03-23-16

PAGE

25

25452-1

PARTS BREAKDOWN, 25100 SERIES HYDRAULIC LEGS ASSEMBLY



REFERENCE PAGE 25 FOR ITEM NUMBERS ▲



VENCO VENTURO INDUSTRIES LLC
CINCINNATI, OHIO

PARTS BREAKDOWN ▲

25100 SERIES HYD. LEGS ▲

DATE
01-18-17A

SUPERSEDES
03-23-16

PAGE

26

25453-1

PHE OUTRIGGERS HYDRAULIC POWER UNIT & KIT (REF: 19401) PARTS BREAKDOWN			
#	DESCRIPTION	QTY	PART #
1	H.P.U. PUMP; PHE OUTRIGGERS	1	17260-1
2	HOSE ASSEMBLY; RETURN, 60", 8MO-8FJ	2	22438
3	ELBOW FITTING; 90°, 8MJ-6MP	1	H2501-0806
4	ELBOW FITTING; 90°, 8MJ-4MP	1	H2501-0804
5	CONTACTOR	1	15831C
6	SWITCH; MOMENTARY PUSH-BUTTON	1	17769
7	BRACKET; SWITCH; MOMENTARY PUSH-BUTTON	1	19402
8	BOOT COVER; MOTOR, H.P.U.	1	16143-3
9	BREATHER CAP; RESERVOIR, H.P.U.	1	19276
10	BOOT COVER; POSITIVE TERMINAL, MOTOR	1	18542
11	DECAL; OIL LEVEL	1	13397
12	BATTERY CABLE; 2 GA, 25' LONG, RED	1	01025-2*25FT
13	BATTERY CABLE; 2 GA, 18" LONG, RED	1	20133
14	GROUND CABLE; 2 GA, 18" LONG, BLACK	1	20133-1
15	WIRE; 16 GA, 20" LONG, #10 TERMINAL RINGS	1	20134
16	WIRE; 16 GA, 20" LONG, 5/16 RING, #10 RING	1	20134-1
17	WIRE; 16 GA, 18" LONG, 5/16 RING, #10 RING	1	20135
18	SPACER; 5/8" O.D., 12 GA DOM WALL, SS	2	19265
19	SPACER BLOCK; 3/4 X 1 X 2-3/8, 7/16" HOLES	1	17284
20	FLAT WASHER; 5/8", GR.5, ZINC, SAE	2	!FWSH-063SAE
21	HEX HEAD CAP SCREW; 3/8-16 X 2-1/4, GR. 5, ZINC	2	!HHCS03816225-5
22	HEX HEAD CAP SCREW; 3/8-16 X 1-1/4, GR. 5, ZINC	2	!HHCS03816125
23	LOCK WASHER; 3/8", GR. 5, ZINC	4	!LWSH-038
24	FLAT WASHER; 3/8", GR. 5, ZINC, SAE	6	!FWSH-038SAE
25	HEX NUT; 3/8-16, GR. 5, ZINC	2	!HNUT-03816
26	HEX HEAD CAP SCREW; 1/4-20 X 1, GR. 5, ZINC	4	!HHCS02520100-5
27	LOCK WASHER; 1/4", GR. 5, ZINC	4	!LWSH-025
28	FLAT WASHER; 1/4", GR. 5, ZINC	8	!FWSH-025
29	HEX NUT; 1/4-20, GR. 5, ZINC	4	!HNUT-02520
30	HEX HEAD CAP SCREW; 5/16-18 X 3/4, GR. 5, ZINC	1	!HHCS03118075
31	LOCK WASHER; 5/16", GR. 5, ZINC	1	!LWSH-031
32	STAR WASHER; 5/16", EXT STAR, STAINLESS STEEL	1	!LWSH-031-STAR-SS



VENCO VENTURO INDUSTRIES LLC
CINCINNATI, OHIO

PARTS BREAKDOWN ▲

PHE H.P.U./KIT (REF: 19401) ▲

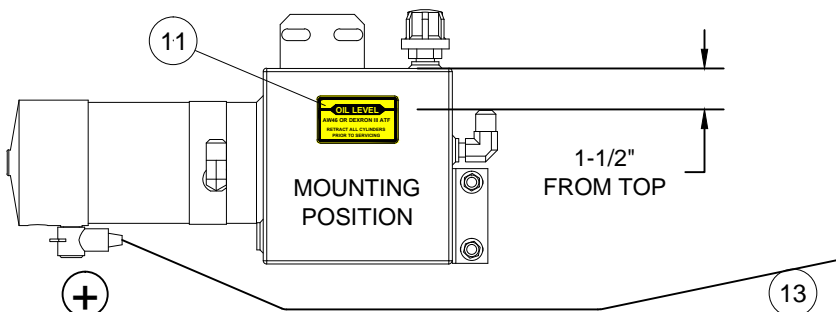
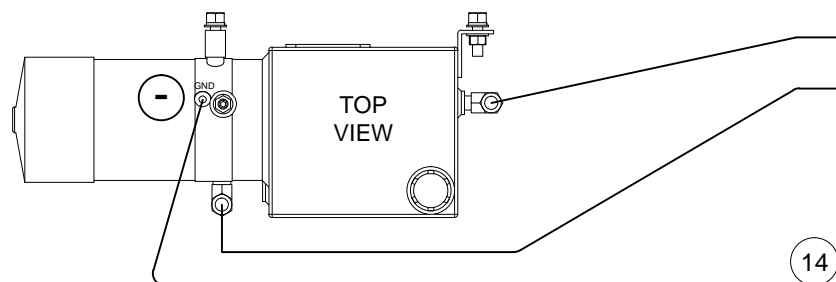
DATE
01-18-17A

SUPERSEDES
03-23-16

PAGE

27 ▲

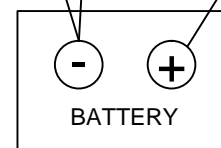
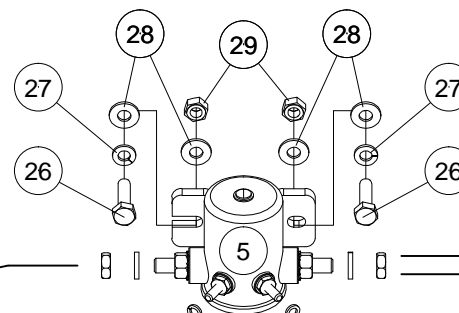
25465



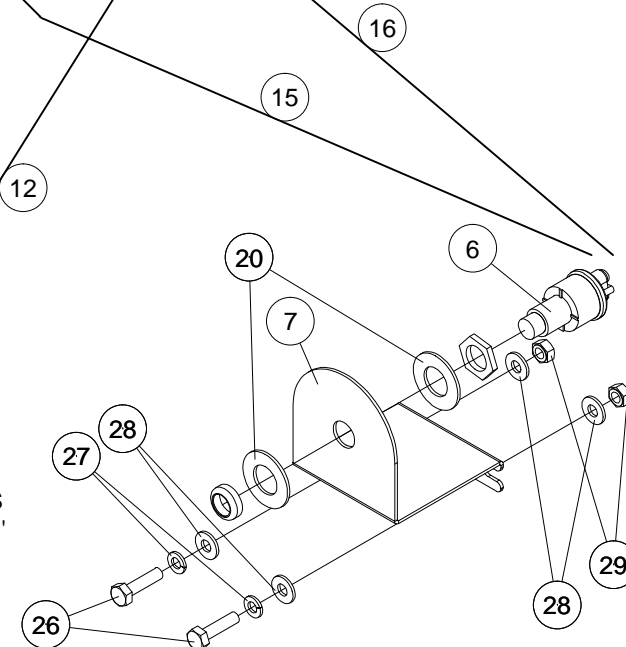
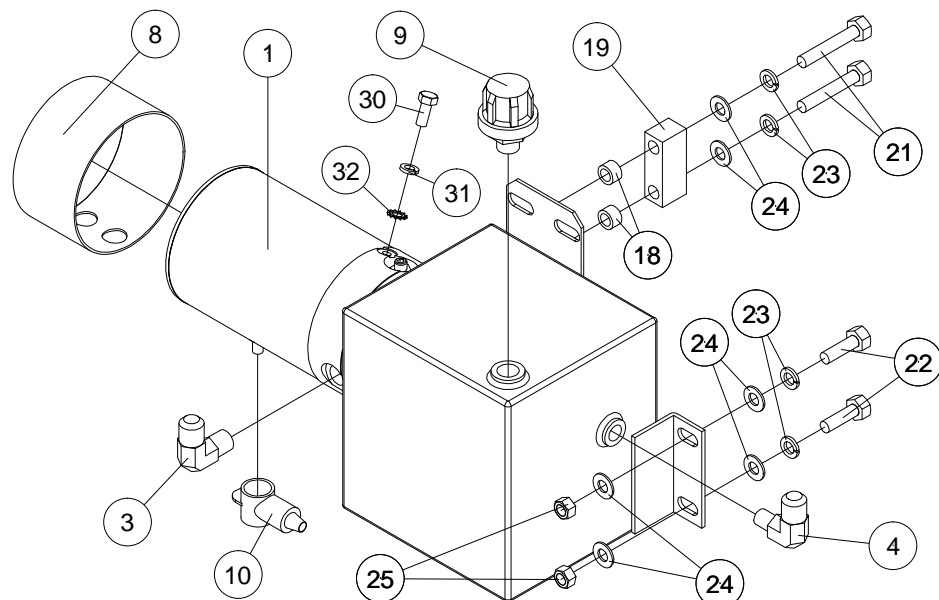
PARTS WITHOUT ITEM NUMBERS INCLUDED WITH COMPONENTS



22444 VALVE BANK



REFERENCE 'BATTERY CABLES & COMPONENTS INSTALLATION'



VENCO VENTURO INDUSTRIES LLC
CINCINNATI, OHIO

PARTS BREAKDOWN (REF: 19401)

PHE OUTRIGGERS HYDRAULIC POWER UNIT & KIT

▲ DATE
01-18-17B
SUPERSEDES
06-13-16A

PAGE
28
25466
▲

PHE OUTRIGGERS HYDRAULIC POWER UNIT & KIT (REF: 25477) PARTS BREAKDOWN			
#	DESCRIPTION	QTY	PART #
1	H.P.U. PUMP; PHE OUTRIGGERS	1	20456
2	HOSE ASSEMBLY; PRESSURE / RETURN, 60", 8MO-8FJ	2	22438
3	ELBOW FITTING; 90°, 8MJ-6MP	1	H2501-0806
4	ELBOW FITTING; 90°, 8MJ-4MP	1	H2501-0804
5	SWITCH; MOMENTARY PUSH-BUTTON	1	17769
6	BRACKET; SWITCH, MOMENTARY PUSH-BUTTON	1	19402
7	BREATHER CAP; RESERVOIR, H.P.U.	1	19276
8	DECAL; OIL LEVEL	1	13397
9	BATTERY CABLE; 2 GA, 25' LONG, RED	1	01025-2*25FT
10	GROUND CABLE; 2 GA, 18" LONG, BLACK	1	20133-1
11	WIRE; 16 GA, 20" LONG, #10 TERMINAL RINGS	1	20134
12	WIRE; 16 GA, 20" LONG, 5/16 RING, #10 RING	1	20134-1
13	FLAT WASHER; 5/8", GR.5, ZINC, SAE	2	!FWSH-063SAE
14	HEX HEAD CAP SCREW; 1/4-20 X 1, GR. 5, ZINC	2	!HHCS02520100-5
15	LOCK WASHER; 1/4", GR. 5, ZINC	2	!LWSH-025
16	FLAT WASHER; 1/4", GR. 5, ZINC	4	!FWSH-025
17	HEX NUT; 1/4-20, GR. 5, ZINC	2	!HNUT-02520



VENCO VENTURO INDUSTRIES LLC
CINCINNATI, OHIO

PARTS BREAKDOWN

PHE H.P.U./KIT (REF: 25477)

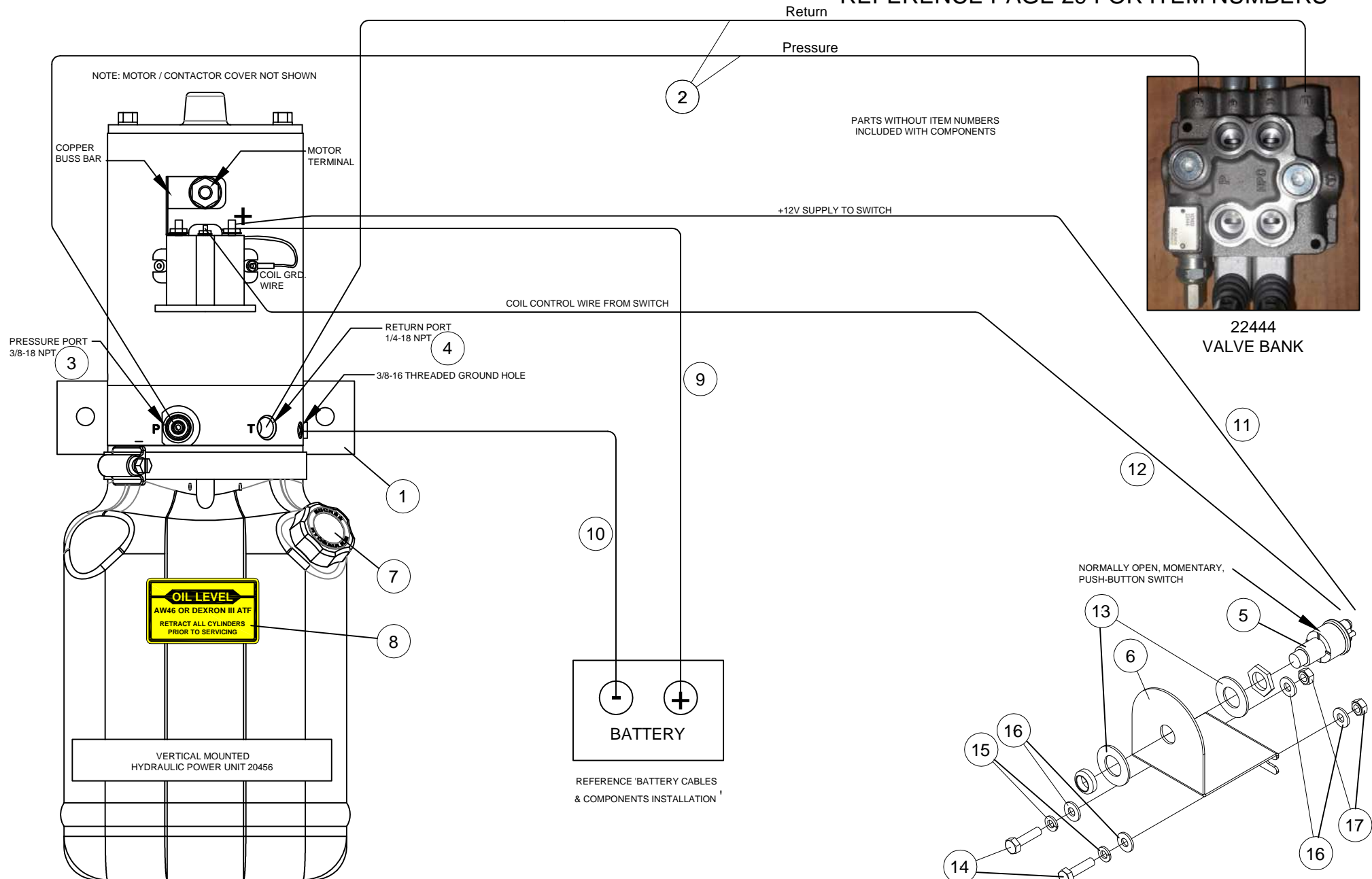
DATE
10-19-21

SUPERSEDES
-

PAGE

29

25476



VENCO VENTURO INDUSTRIES LLC
CINCINNATI, OHIO

PARTS BREAKDOWN (REF: 25477 w/ 20456 HYD. PWR. UNIT)

PHE OUTRIGGERS HYDRAULIC POWER UNIT & KIT

DATE
10-19-21

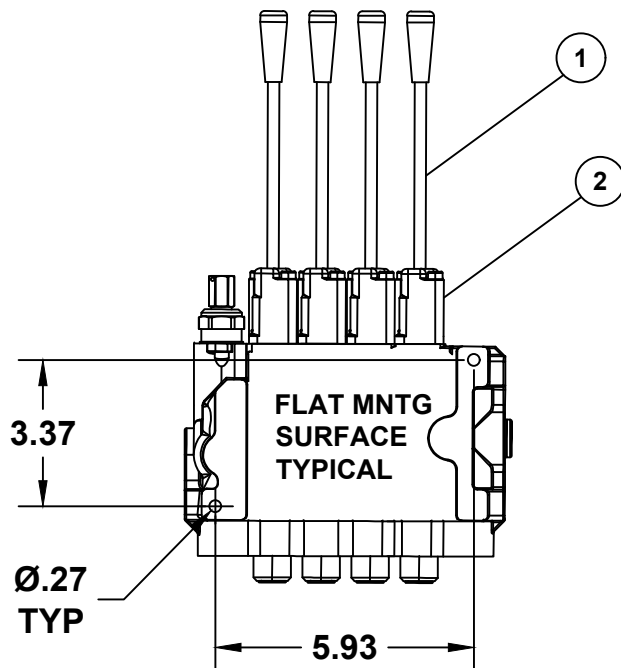
SUPERSEDES
-

PAGE

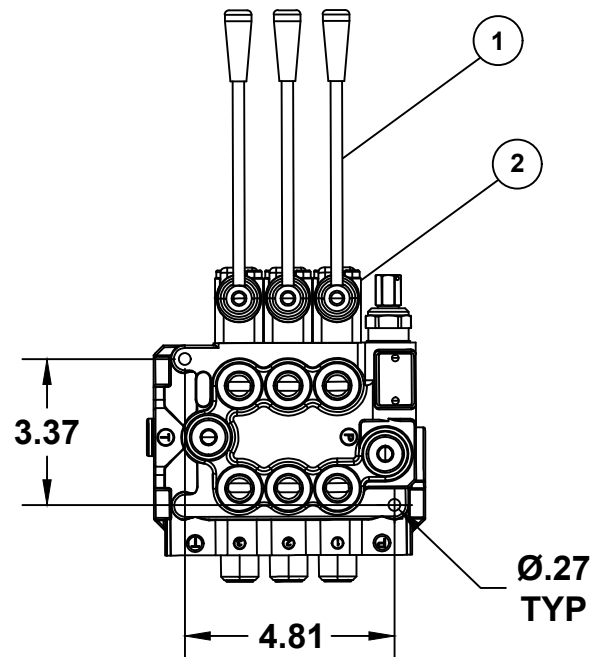
30

25475

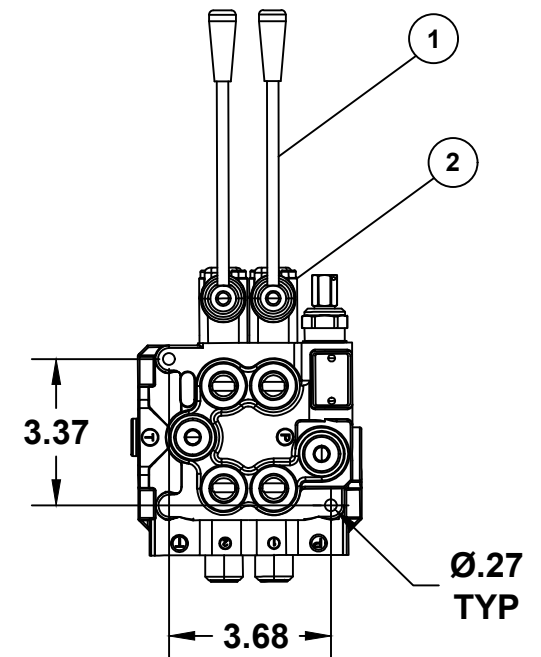
22555



25050

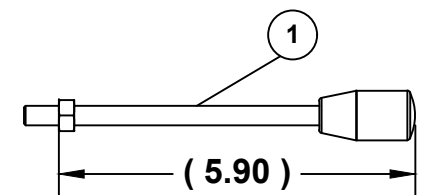
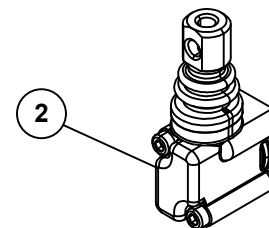


22444



NOTE:
P/N 25219 INCLUDES
MNTG HARDWARE

ITEMS 3 & 4 NOT SHOWN



	SPOOL VALVE ASSEMBLIES				
ITEM NO.	22444	25050	22555	PART NO.	DESCRIPTION
	QTY.				
1	2	3	4	25218	HANDLE, BUCHER SPOOL VALVES
2	2	3	4	25219	LEVER BOX, BUCHER SPOOL VALVES
3	2	3	4	25209	BUCHER SEAL KIT, SINGLE SECTION
4	2	3	4	25213	CENTER SPRING KIT, SINGLE SECTION



MANUFACTURING, INC.
CINCINNATI, OHIO

TITLE
REPLACEMENT PARTS - SPOOL VALVES
POWERED STABILIZERS (PH, PHX, PHXD)

DATE
09-24-25
SUPERSEDES
-

PAGE
-
25216



VENTURO CRANES LIMITED WARRANTY POLICY

Venturo products are built to last...we guarantee them.

As a purchaser of any new Venturo product covered by warranty, you will receive 1 year of the most complete coverage available...and, at no added cost to you.

1-Year Limited Warranty Policy

This limited policy warrants new products of Venturo to be free from defects in material and workmanship for a period of one (1) year from date of original installation. OEM products or accessories purchased by Venturo as part of or offered with our product will carry the OEM manufacturer's respective warranty. Our warranty covers:

- ***Repair or replacement of product***
- ***Labor to repair or replace product***
- ***Freight to return and/or replace product***

We shall not be liable for any contingent liabilities arising out of the improper function of any products. Warranty shall become void if the product is improperly installed, modified, damaged, abused or used for application other than intended use. There is no warranty of merchantability, fitness for a particular purpose, warranty arising from course of dealing or usage of trade, or any other implied or expressed warranty, except as made specifically herein. This warranty supersedes all previous warranties, written or implied.

Warranty Claims

Venco Venturo Industries LLC will make a good faith effort for prompt correction or other adjustment with respect to any product, which proves to be defective after our inspection and within the warranty period. Before any repairs are attempted or before returning any product, your Venturo Distributor is required to obtain a warranty claim number. This number is necessary for any claim to be considered. To obtain a warranty claim number, Venturo requires the model and serial number. Only authorized Venturo Distributors can perform warranty. For the name and address of your local Venturo Distributor call the **Warranty Claim Department - 513-772-8448**.

WARNING - It is the responsibility of the installer to ensure the installation is completed according to the manufacturer's recommendations, ensure the ultimate user understands how to operate product in a safe manner, and understands the need for regular service and maintenance by an authorized Venturo Distributor. No modifications or alterations may be made to any Venturo product without the expressed written consent of Venco Venturo Industries LLC. Installation of any Venturo product must be done by an authorized Venturo Distributor, to the standards of the industry; including maintenance, service and affixing of all instruction, safety and warning decals. Users should be instructed as to the safe operation at time of delivery. Maintenance, service, operation and safety warning decals are available on request from Venco Venturo Industries LLC.

VENCO VENTURO INDUSTRIES LLC
12110 BEST PLACE | CINCINNATI, OHIO 45241
P: 800-226-2238 | F: 513-326-5427
www.venturo.com