



VENCO VENTURO

INDUSTRIES LLC

VC1000 VAN CRANE FREIGHTLINER SPRINTER HIGH ROOF

**VHDAAA
INSTALLATION & OWNER'S MANUAL**

Dear Venturo VC1000 Purchaser,

Thank You!

Thank you for your purchase of the Venturo VC1000 Van Crane. This crane was carefully engineered to provide excellent performance when properly installed, operated and maintained.

Please read this entire manual prior to installing and operating the equipment. It instructs you how to safely and easily install, set up and operate your crane. Please be sure that you, and any other person who will operate the crane, carefully follow the recommended safety practices at all times. Failure to do so could result in personal injury or property damage.

All information in this manual is relative to the most recent product information available at the time of printing. Review this manual for proper installation and to familiarize yourself with the crane's features and operations. We reserve the right to change product specifications, designs and equipment without notice and without incurring obligation.

If you have any problems or questions concerning the VC1000, please call Venco Venturo Industries LLC directly. We want to ensure your complete satisfaction at all times.

Sincerely,

Venco Venturo Industries LLC

Record Product Information

Before installing, setting up and operating your new crane, please locate the serial plate on the crane and record the information provided to the right. You can locate the serial number plate by looking at where the primary boom connects with the mast at the top. This information will be necessary, should you seek technical support.

Model:

Serial Number:

Product Registration and Customer Support

Please register your product on our website, www.venturo.com/warranty-policy/.

If you have difficulty assembling this product or have any questions regarding the controls, operation, or maintenance of this crane, you can seek help from our expert customer support. Choose from the options below:

- Visit us on the web at www.venturo.com
 - Download this owner's manual at www.venturo.com/owner-manuals/
- Call a Customer Support Representative or Technical Support at (800) 226-2238
- Locate the nearest Venturo Distributor in your area (800) 226-2238 or info@venturo.com



VENCO VENTURO INDUSTRIES LLC
CINCINNATI, OHIO

TITLE

LEAD PAGE

VC1000

DATE

09-12-16

SUPERSEDES

-

SECTION

-

CEV225

TABLE OF CONTENTS

VC1000 (VHDAAA) OWNER'S MANUAL; SPRINTER HIGH ROOF

CEV225

LEAD PAGE

SECTION 100

DESCRIPTION & SPECIFICATIONS

CEV317

DIMENSIONS & CAPACITY

CEV331

WIRE ROPE & HOOK SPECIFICATIONS

SECTION 150

SAFETY

CE-044

CRANE SAFETY AND HAZARDS

CEV203

OPERATING INSTRUCTIONS

CEV212

OPERATING INSTRUCTIONS & MAINTENANCE

CEV226

USER INSTRUCTIONS

CEV227

USER INSTRUCTIONS, CONT.

CEV322

DECAL DRAWINGS & LIST

CEV170

SAFETY DECALS

CEV171

SAFETY DECALS

CEV206

DECAL LOCATIONS

CEV217

KIT; CEV216 FIELD SERVICE LABELS

SECTION 200

INSTALLATION

CEV311

PACKAGE CONTENTS

CEV312

INSTALLATION INSTRUCTIONS; UPPER MOUNTING BRACKET

CEV313

INSTALLATION INSTRUCTIONS; VC1000 CRANE

CEV314

INSTALLATION INSTRUCTIONS; VC1000 CRANE, CONT.

CEV315

INSTALLATION INSTRUCTIONS; ROTATION STOP RELEASE CABLE

CEV222

ELECTRICAL INSTALLATION INSTRUCTIONS

CEV223

BATTERY CABLE INSTALLATION

CEV332

WIRING DIAGRAM

SECTION 400

REPLACEMENT PARTS

CEV318

REPLACEMENT PARTS DRAWING

CEV319

REPLACEMENT PARTS LIST

CEV320

REPLACEMENT HARDWARE DRAWING

CEV321

REPLACEMENT HARDWARE LIST



VENCO VENTURO INDUSTRIES LLC
CINCINNATI, OHIO

TITLE

TABLE OF CONTENTS

DATE

05-14-19

SECTION

TOC

VC1000 (VHDAAA)

SUPERSEDES

-

CEV333

SECTION 100

DESCRIPTION

&

SPECIFICATIONS



VENCO VENTURO INDUSTRIES LLC
CINCINNATI, OHIO



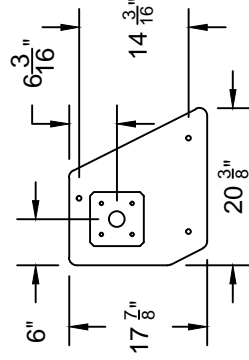
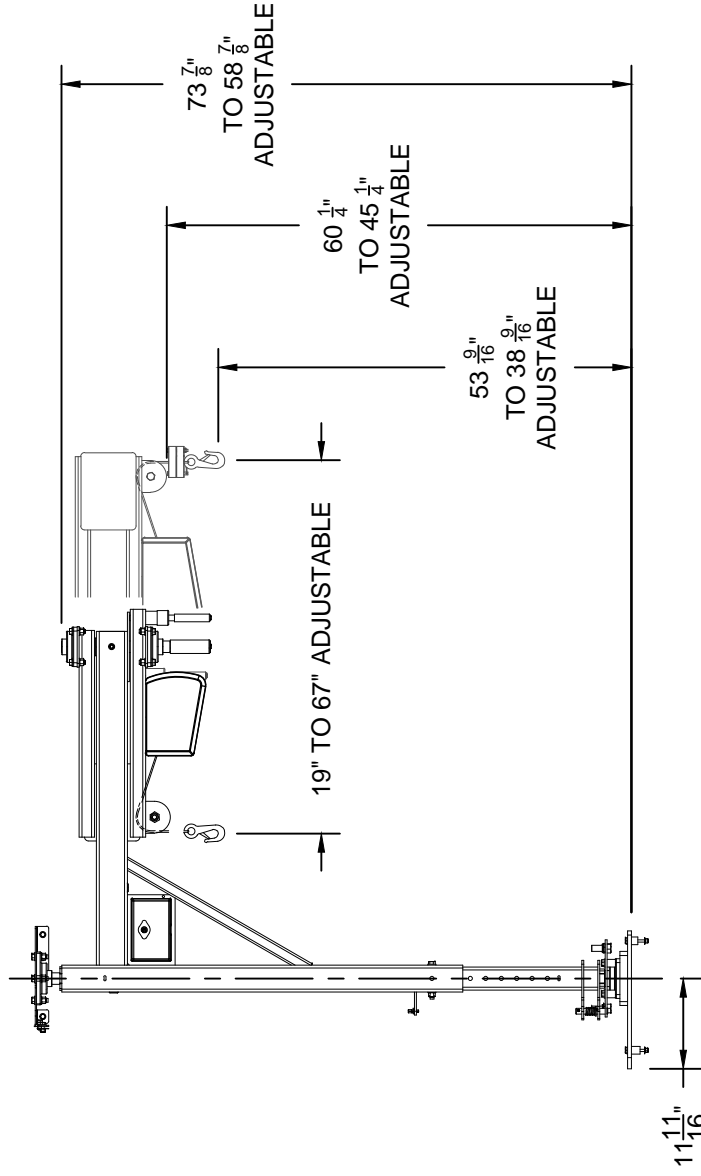
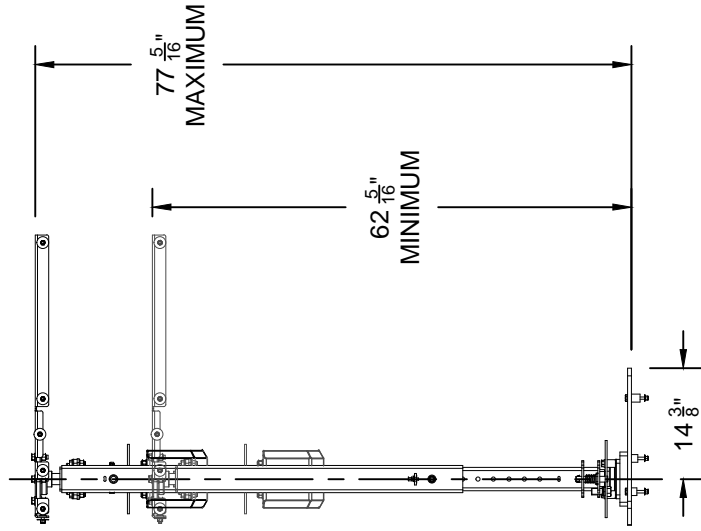
CAUTION

- 1000 LBS MAXIMUM CAPACITY IS BASED UPON TYPICAL VAN FLOOR STRUCTURE LIMITATIONS, NOT WINCH CAPACITY. IT IS THE SOLE RESPONSIBILITY OF THE INSTALLER TO DETERMINE IF ADDITIONAL FLOOR REINFORCEMENT IS NECESSARY.



WARNING

- THESE PRODUCTS ARE NOT PASSENGER LIFTS. THEY ARE NOT DESIGNED OR INTENDED TO BE USED TO LIFT, SUPPORT OR OTHERWISE TRANSPORT PERSONNEL.



BASE MOUNT DIMENSIONS



VENCO VENTURO INDUSTRIES LLC
CINCINNATI, OHIO

TITLE

DIMENSIONS & CAPACITY

SECTION

C100

DATE

05-13-19A

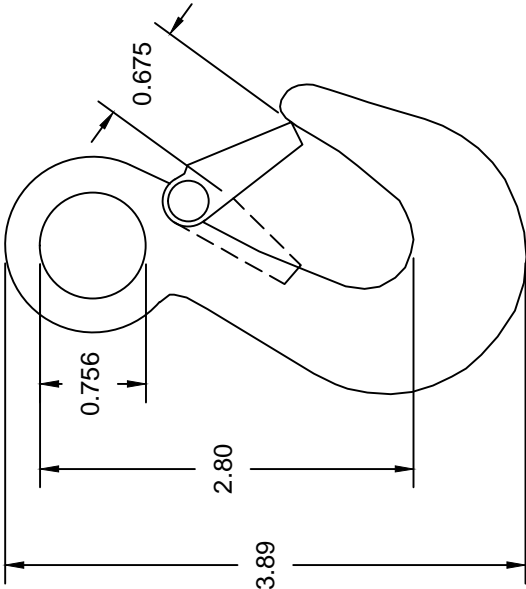
SUPERSEDES

01-26-17

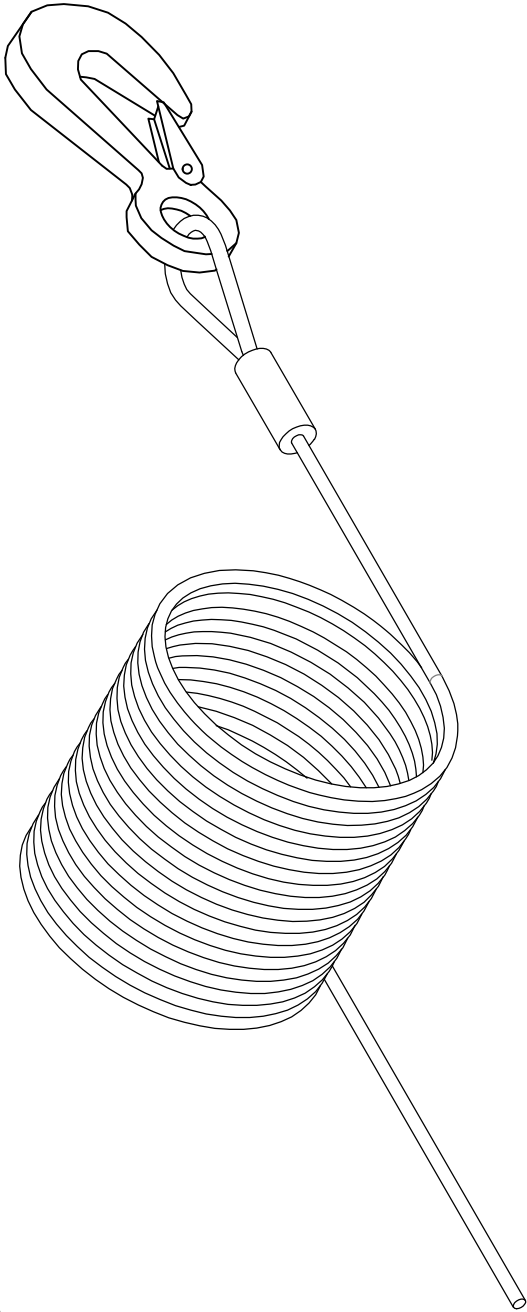
VC1000 (VHDAAA)


CEV317

CEV329 WIRE ROPE & HOOK ASSEMBLY



DETAILS:
3/16" X 20'
GALVANIZED AIRCRAFT CABLE
(4200 LBS BREAKING STRENGTH)
WITH 7500 LB. SAFETY HOOK
LESS THIMBLE.



 VENCO VENTURO INDUSTRIES LLC CINCINNATI, OHIO	TITLE		DATE	SECTION
	WIRE ROPE & HOOK SPECIFICATIONS		05-13-19A	C100
	ESV-1000 & VC1000		SUPERSEDES 02-05-19	CEV331

SECTION 150

SAFETY



VENCO VENTURO INDUSTRIES LLC
CINCINNATI, OHIO

CAUTIONS

1. INSPECT VEHICLE AND CRANE, INCLUDING OPERATION, PRIOR TO USE DAILY.
2. DO NOT USE THIS EQUIPMENT EXCEPT ON SOLID, LEVEL SURFACE WITH CRANE MOUNTED ON FACTORY RECOMMENDED TRUCK.
3. BEFORE OPERATING THE CRANE, REFER TO MAXIMUM LOAD (CAPACITY) CHART ON CRANE FOR OPERATING (LOAD) LIMITATIONS.
4. DO NOT OPERATE, WALK, OR STAND BENEATH BOOM OR A SUSPENDED LOAD.
5. UNPLUG PENDANT (AND OPTIONAL ELECTRIC QUICK DISCONNECT, IF ON MODEL) WHEN NOT IN USE.
6. FOR TRAVEL, BOOM MUST BE TIED DOWN IN THE STOWED POSITION.

DANGER

- THIS CRANE IS NOT A PASSENGER LIFT
- IT IS NOT DESIGNED OR INTENDED TO BE USED TO LIFT, SUPPORT, OR OTHERWISE TRANSPORT PERSONNEL.

YOU MUST NOT OPERATE THIS CRANE UNLESS :

1. YOU HAVE BEEN TRAINED IN THE SAFE OPERATION OF THIS CRANE, **AND**
2. YOU KNOW AND FOLLOW THE SAFETY AND OPERATION RECOMMENDATIONS CONTAINED IN THE MANUFACTURER'S MANUALS, YOUR EMPLOYER'S WORK RULES, AND APPLICABLE GOVERNMENT REGULATIONS. AN UNTRAINED OPERATOR SUBJECTS THEMSELVES AND OTHERS TO DEATH OR SERIOUS INJURY.

REFERENCE SAFETY MANUAL INST-23233



VENCO VENTURO INDUSTRIES LLC
CINCINNATI, OHIO

TITLE

CRANE SAFETY & HZRDS

DATE

02-20-17E

SECTION

C200

▲

CE-/CEV/ESV SERIES CRANES

SUPERSEDES

09-08-16D

CE-044

OPERATING INSTRUCTIONS

ELECTRIC WINCH

The winch is operated by a control switch in a plug-in remote pendant. Unplug the pendant and store it in the vehicle when the crane is not in use.

ROTATION LOCK

Before lifting a load, make sure the brake handle is tightened to keep boom from rotating (do not pull items at an angle. The load hook must be centered over the load.)

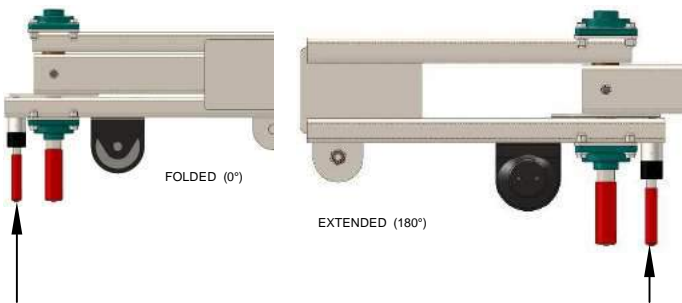


CAUTION

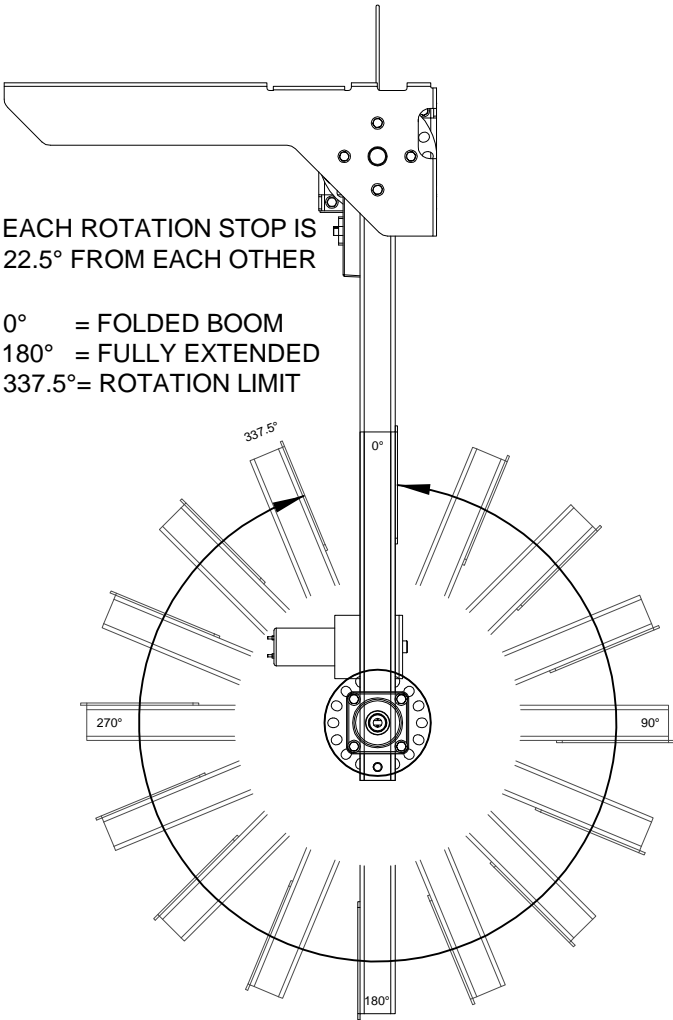
- BOOM MUST BE FOLDED AND SECURED (STOWED POSITION) BEFORE DRIVING VEHICLE. DO NOT DRIVE WITH BOOM EXTENDED OUT.

BOOM ARTICULATION

The following illustrates how to articulate the boom.



To rotate the boom, pull the smaller lever until pin is clear of slots. Manually rotate the boom to desired position and release smaller lever, making sure the pin retracts into one of the slots. This will keep the boom from rotating.



EACH ROTATION STOP IS 22.5° FROM EACH OTHER

0° = FOLDED BOOM
180° = FULLY EXTENDED
337.5° = ROTATION LIMIT



VENCO VENTURO INDUSTRIES LLC
CINCINNATI, OHIO

TITLE
OPER. INSTR. & MNTNCE

VC1000 SERIES VAN CRANES

DATE
01-27-17C

SUPERSEDES
09-08-16B

SECTION
C200

CEV203

OPERATING INSTRUCTIONS

JACK LEG

Stowed Jack Leg must be secured inside van.



C A U T I O N

- JACK LEG MUST BE REMOVED FROM RECEIVER AND STOWED PRIOR TO OPERATING THE VEHICLE.



W A R N I N G

- THE MASTER DISCONNECT SWITCH ISOLATES ELECTRICAL POWER FROM THE CRANE AND MUST BE SWITCHED OFF ANYTIME THE CRANE IS NOT IN USE..

OPTIONAL CIRCUIT BREAKER

An optional 150amp circuit breaker (#22964-150) is available. The circuit breaker should be placed between the lead-acid battery supply and the crane; **as close as practical to the lead-acid battery.**

MAINTENANCE

WINCH

The winch is permanently lubricated. There may be grease leakage out of the winch, especially during the first few operations. This is normal and it is not necessary to grease or oil any part of the winch at any time.

WIRE ROPE

Inspect wire rope periodically. If any wear or fraying exists, replace wire rope.



VENCO VENTURO INDUSTRIES LLC
CINCINNATI, OHIO

TITLE

OPER. INSTR. & MNTNCE

VC1000

DATE

09-08-16

SUPERSEDES

-

SECTION

C200

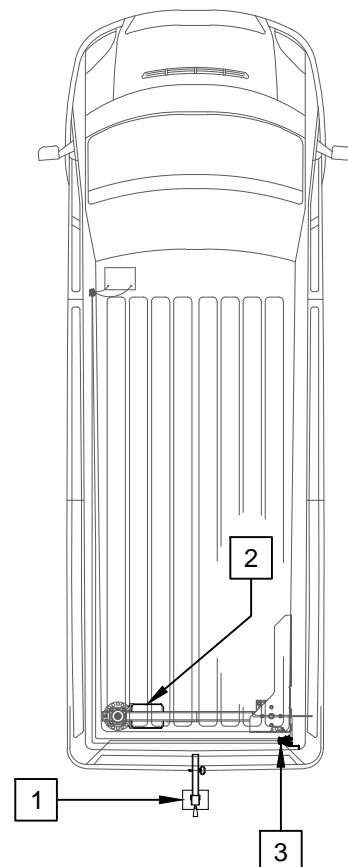
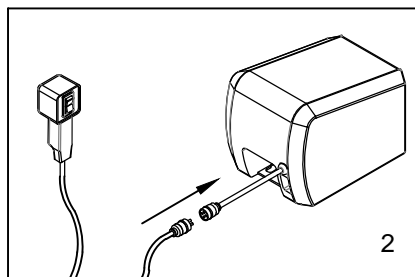
CEV212

- Prior to using crane, read all operator instructions and Safety Manual
- Make sure you are familiar with all of the controls, functions, and locking mechanisms
- Read and adhere to all safety placards that are installed on the crane and the vehicle
- Since the manufacturer has no direct control over the crane application and operation, conformance with good safety practices is the responsibility of the operator
- The van and crane are to be positioned on firm level surfaces with the Jack Leg (if equipped) always set and the chassis brake engaged

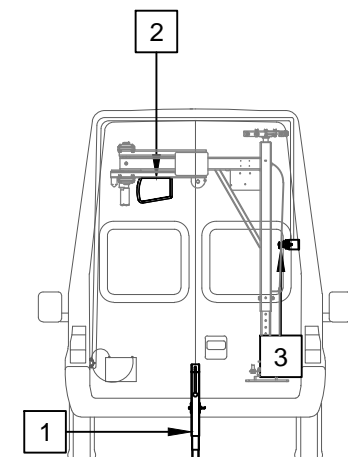
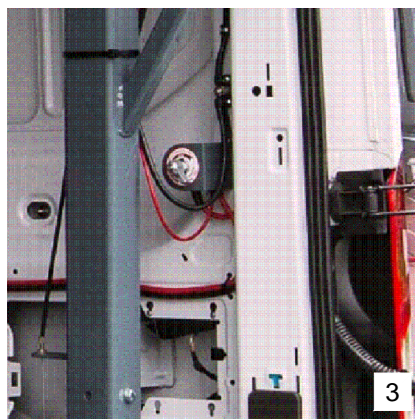
1. Install Jack Leg (provided) into receiver and adjust as needed



2. Plug control pendant into socket located on the crane



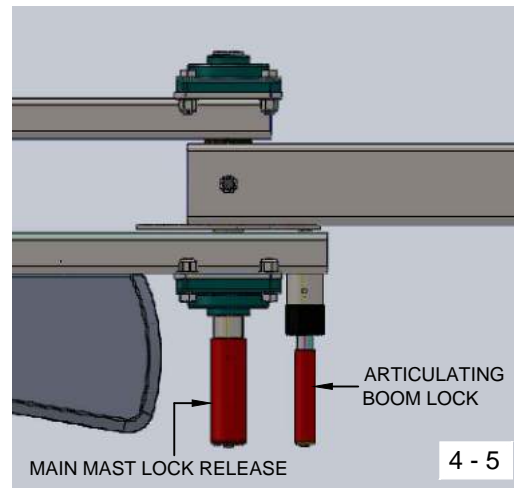
3. Turn Master Disconnect Switch to the 'ON' position



USER GUIDE VC1000 SERIES VAN CRANES

- Make sure you are familiar with all of the controls, functions, and locking mechanisms
- Always rotate the crane or boom individually, never at the same time
- Whenever possible, always rotate the crane or boom by 'pushing' away from you
- Always use proper rigging hardware and slings

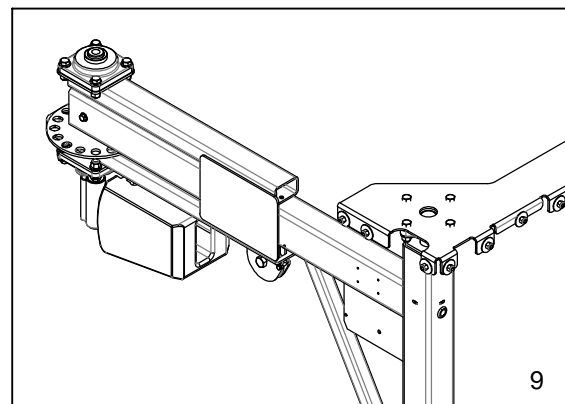
4. Pull the main mast lock release down (larger handle), swing crane into position, and release handle to lock in position.
5. Pull the articulating boom lock down (smaller handle) to precisely center load hook over load.



6. Using the pendant, lower hook to the load and attach to the proper rigging hardware and / or sling(s).
7. Carefully raise the load so it will clear the van floor.
8. Using caution, release lock on main mast and guide load into van. Unlocking one lock at a time will give you more control in handling the load.



9. Unhook the load and stow the hook. Reposition the crane into the stowed position for travel, and secure the load.
10. Remove the Jack Leg and stow in a secure position.



VENCO VENTURO INDUSTRIES LLC
CINCINNATI, OHIO

TITLE

USER INSTRUCTIONS

VC1000 SERIES VAN CRANES

DATE

05-13-19D

SUPERSEDES

01-27-17C

SECTION

C150

CEV227

DECAL DRAWING & LIST
VC1000 (VHDAAA); SPRINTER HIGH ROOF

PART NO.: 15672-1000
DECAL: CAPACITY 1000 LBS
FUNCTION: TO INFORM OPERATOR OF MAXIMUM LIFTING CAPACITY
QUANTITY: 2
PLACEMENT: SECONDARY BOOM PLATE, BOTH SIDES



PART NO.: CEV215
DECAL: MODEL NAME
FUNCTION: TO SHOW THE MODEL OF THE CRANE
QUANTITY: 2
PLACEMENT: ONE ON EACH SIDE OF BOOM



PART NO.: 17389
DECAL: VENTURO
FUNCTION: MANUFACTURER'S LOGO
QUANTITY: 2
PLACEMENT: PRIMARY BOOM, BOTH SIDES NEAR MAST



DECAL #: 24964
DESCRIPTION: DANGER, STABILIZERS WILL CAUSE SERIOUS CRUSHING INJURY
PURPOSE: TO INFORM OPERATOR TO STAND CLEAR OF STABILIZER JACK LEG
QUANTITY: 1
PLACEMENT: JACK LEG, NEAR TOP ON SAME SIDE AS HAND CRANK



VENCO VENTURO INDUSTRIES LLC
CINCINNATI, OHIO

TITLE
DECAL DRAWING & LIST

VC1000; SPRINTER HI-ROOF

DATE
01-26-17

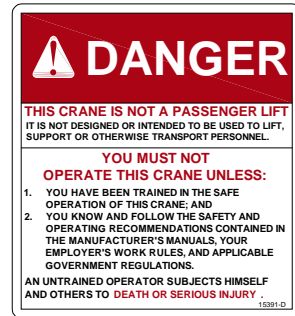
SUPERSEDES
-

SECTION
C400

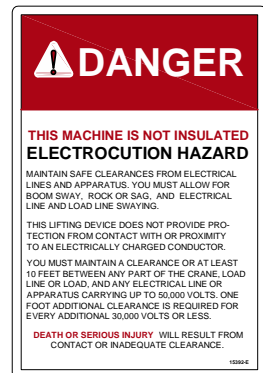
CEV322



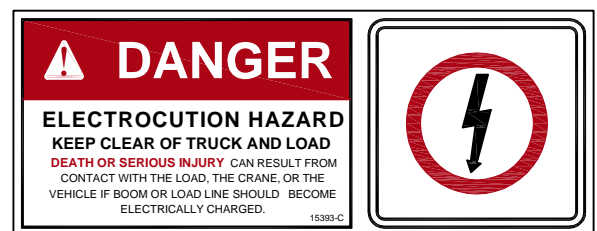
DECAL #: 15390
DESCRIPTION: CAUTION, INSPECT VEHICLE & CRANE...
PURPOSE: TO INFORM THE OPERATOR OF KEY OPERATING REQUIREMENTS.
QUANTITY: 1
PLACEMENT: UPPER MAST ON SIDE, OPPOSITE PRIMARY BOOM



DECAL #: 15391
DESCRIPTION: DANGER, NOT A PASSENGER LIFT
PURPOSE: TO INFORM OPERATOR NOT TO LIFT, SUPPORT, OR TRANSPORT PERSONNEL, AND TO ENSURE OPERATOR IS ADEQUATELY TRAINED.
QUANTITY: 1
PLACEMENT: UPPER MAST ON SIDE, OPPOSITE PRIMARY BOOM



DECAL #: 15392
DESCRIPTION: DANGER, ELECTROCUTION HAZARD, MACHINE (CRANE)
PURPOSE: TO INFORM OPERATOR THAT MACHINE (CRANE) REPRESENTS AN ELECTROCUTION HAZARD SHOULD IT COME CLOSE TO OR IN CONTACT WITH AN ELECTRICAL VOLTAGE SOURCE.
QUANTITY: 1
PLACEMENT: UPPER MAST ON SIDE, OPPOSITE PRIMARY BOOM



DECAL #: 15393
DESCRIPTION: DANGER, ELECTROCUTION HAZARD, VEHICLE (TRUCK)
PURPOSE: WARNS OF DANGER FROM ELECTRICALLY CHARGED VEHICLE, CRANE, OR LOAD.
QUANTITY: 4
PLACEMENT: EACH SIDE & EACH END OF VEHICLE



VENCO VENTURO INDUSTRIES LLC
CINCINNATI, OHIO

TITLE
SAFETY DECALS

VENTURO VAN CRANES

DATE
09-29-16A

SUPERSEDES
08-02-16

SECTION
C400

CEV170

DECAL #: 15513
 DESCRIPTION: MASTER DISCONNECT SWITCH
 PURPOSE: TO INFORM THE OPERATOR OF LOCATION AND OPERATION OF MASTER DISCONNECT SWITCH
 QUANTITY: 1
 PLACEMENT: ON MASTER DISCONNECT SWITCH BRACKET



DECAL #: 15398
 DESCRIPTION: UNPLUG REMOTE CONTROL
 PURPOSE: TO INFORM OPERATOR TO UNPLUG REMOTE CONTROL WHEN NOT IN USE
 QUANTITY: 1
 PLACEMENT: NEAR PENDANT SOCKET



DECAL #: 573403
 DESCRIPTION: WARNING - STOWING
 PURPOSE: TO INFORM OPERATOR TO STAY AWAY FROM THE BOOM WHEN STOWING
 QUANTITY: 1
 PLACEMENT: UPPER MAST ON SIDE, OPPOSITE PRIMARY BOOM



VENCO VENTURO INDUSTRIES LLC
 CINCINNATI, OHIO

TITLE
 SAFETY DECALS

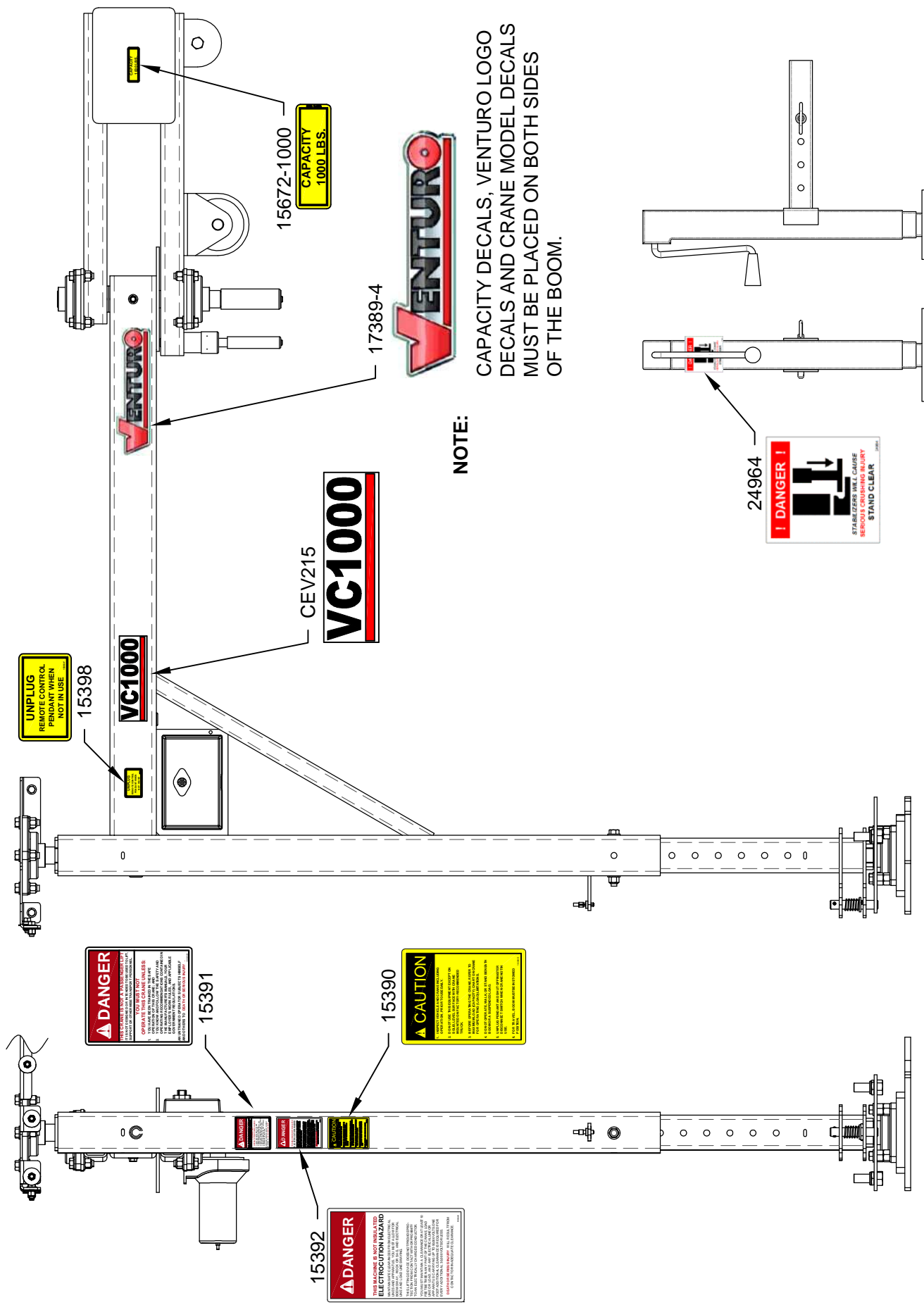
VENTURO VAN CRANES

DATE
 09-29-16A

SUPERSEDES
 08-02-16

SECTION
 C400

CEV171



 VENTURO® VENCO VENTURO INDUSTRIES LLC CINCINNATI, OHIO	TITLE	DATE	SECTION
	DECAL LOCATIONS VC1000 SERIES VAN CRANES ▲	01-27-17C SUPERSEDES 01-06-17B	C400 CEV206

VC1000	CEV216 FIELD SERVICE LABEL KIT (VC1000 SERIES)		VC1000 SERIAL NUMBER RANGE: 33000 - CURRENT
QTY.	PART NO.	DESCRIPTION	
1	15397	BOM; ACCIDENT PREVENTION SIGNS	
2	15672-1000	DECAL; CAPACITY 1000LBS	
2	17389-4	DECAL; VENTURO (SMALL)	
1	24964	DECAL; DANGER, STABILIZERS, JACK LEG	
1	CEV206	IDWG: DECAL PLACEMENT, VC1000	
2	CEV215	DECAL; MODEL, VC1000	
1	CEV217	IDWG: FIELD SERVICE LABEL KIT	
1	INST-23233	*CURRENT* SAFETY MANUAL	

15397 ACCIDENT PREVENTION SIGNS KIT		
QTY.	PART NO.	DESCRIPTION
1	15390	DECAL, CAUTION, INSTRUCTIONS
1	15391	DECAL, CRANE NOT PASSENGER LIFT
1	15392	DECAL, DANGER/ELECTROCUTION HAZARD
4	15393	DECAL, DANGER-ELECT HAZARD
1	15394	IDWG: APPLICATION INSTRN.
1	15398	DECAL, UNPLUG PENDANT
1	15401	DECAL, UNLAWFUL TO OPERATE
1	15513	DECAL, MASTER DISCONNECT SWITCH
1	22317	DECAL SHEET; VENTURO. TRDMRK COMPLEMENTARY 8" X 2.75"
1	20927	DECAL, CRANE STABILITY, ZONES 1-10 DIAGRAM



VENCO VENTURO INDUSTRIES LLC
CINCINNATI, OHIO

TITLE
FIELD SERVICE LABEL KIT
VC1000 VAN CRANES

DATE
05-13-19E
SUPERSEDES
01-24-17D

SECTION
C150
CEV217

SECTION 200

INSTALLATION



VENCO VENTURO INDUSTRIES LLC
CINCINNATI, OHIO

PACKAGE CONTENTS
VC1000 (VHDAAA); SPRINTER HIGH ROOF

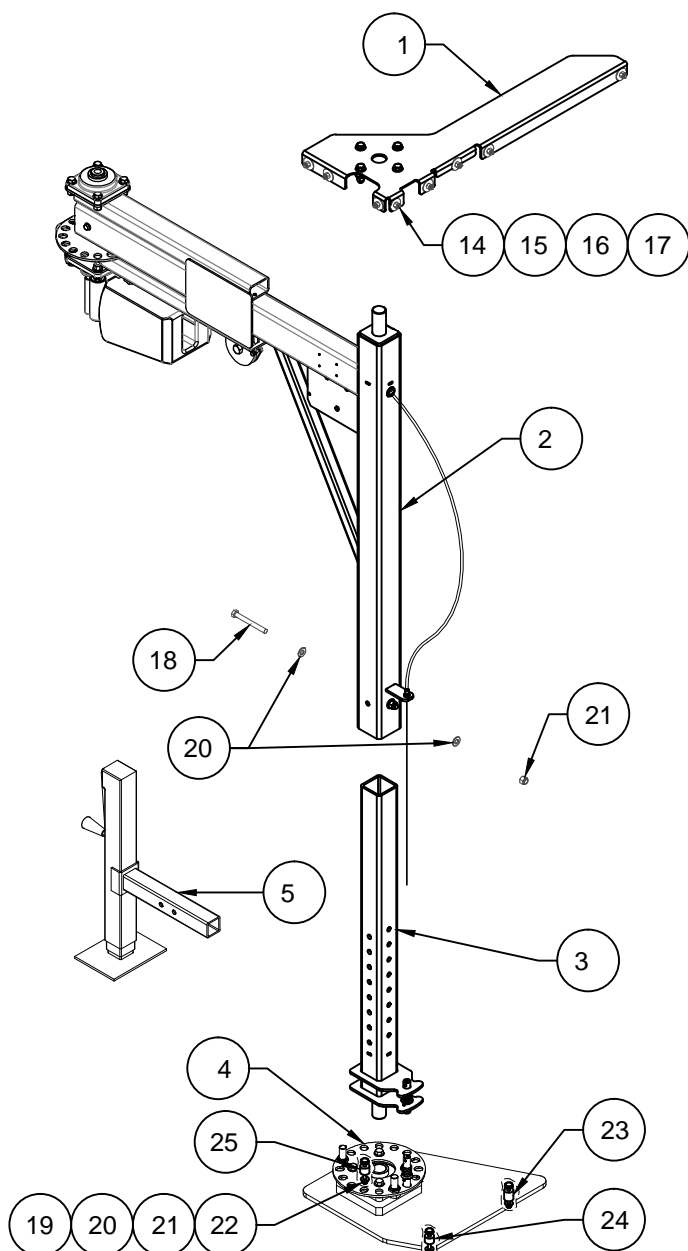
The VC1000 Van Crane will ship with some sections pre-assembled from the factory. Below are illustrations to help identify sections of the Van Crane and Installation Kit components.

VC1000 VAN CRANE SECTIONS

Locate and identify the following crane sections:

1. Upper Mounting Bracket / Bearing subassembly
2. Upper Mast / Secondary Boom subassembly
3. Lower Mast / Rotation Stop Pin subassembly
4. Lower Mounting Bracket / Bearing / Detent Plate subassembly
5. Jack Leg Welded Assembly

NOTE: Some fasteners are located in the installation kit.



CEV213 INSTALLATION KIT

Locate and identify the following components:

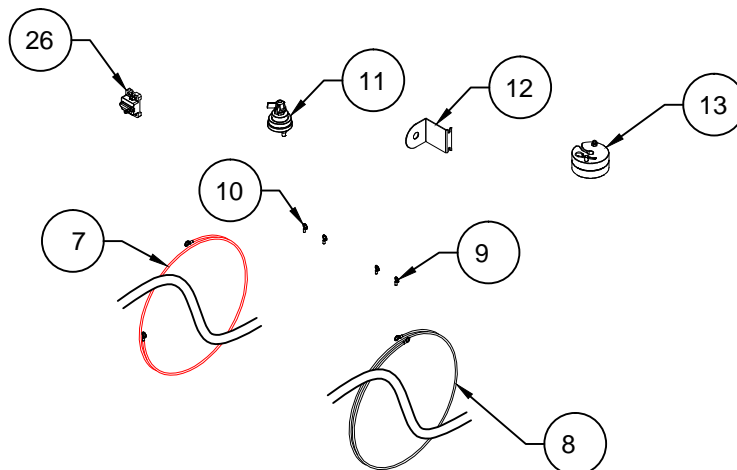
- † 6. [1] Installation Kit Box (#BOX18*12*6)
7. [1] Red Battery Cable (#01025-4*29FT)
8. [1] Black Battery Cable (#01025-4*28FT)
9. [2] 5/16 Terminal Ring (!TERM4G313RG)
10. [2] 3/8 Terminal Ring (!TERM4G375RG)
11. [1] Master Disconnect Switch (#13451)
12. [1] Switch Mounting Bracket (#19516)
13. [1] Headache Ball Assembly (#16735)

FASTENER PACKETS

14. [8] 3/8-16X1" Hex Head Cap Screws (!HHCS03816100)
15. [8] 3/8" SAE Flat Washers (!FWSH-038SAE)
16. [8] 3/8" Fender Washers (!FWSH-038F)
17. [8] 3/8-16 Nyloc Nuts (!LNUT-03816)
18. [1] 1/2-13X4-1/2" Hex Head Cap Screws (!HHCS05013450)
19. [3] M8-M1.25 X 70MM Hex Head Cap Screws (!HHCSM8-M1.25X70MM)
20. [6] 5/16" Flat Washers (!FWSH-031)
21. [3] 5/16" Lock Washers (!LWSH-031)
22. [3] 5/16-13 Nyloc Nuts (!LNUT-03118-N)
23. [1] CEV324-1
24. [1] CEV324-2
25. [1] CEV324-3

OPTIONAL EQUIPMENT

26. [1] 150A CIRCUIT BREAKER (#22946-150)



† NOT SHOWN



VENCO VENTURO INDUSTRIES LLC
CINCINNATI, OHIO

TITLE
PACKAGE CONTENTS

VC1000 (VHDAAA)

DATE
05-13-19A

SUPERSEDES
01-24-17

SECTION
C200

CEV311

INSTALLATION INSTRUCTIONS
VC1000 (VHDAAA); SPRINTER HIGH ROOF

THE VC1000 VAN CRANE IS DESIGNED TO BE INSTALLED IN THE RIGHT REAR CORNER OF THE VAN. THE MOUNTING KIT CONTAINS ALL NECESSARY HARDWARE FOR A COMPLETE INSTALLATION.



C A U T I O N

- 1,000 LBS CAPACITY IS BASED UPON VAN STRUCTURAL LIMITATIONS, NOT WINCH CAPACITY. IT IS THE OPERATOR'S RESPONSIBILITY NOT TO EXCEED THE CAPACITY OF THE VAN STRUCTURE.

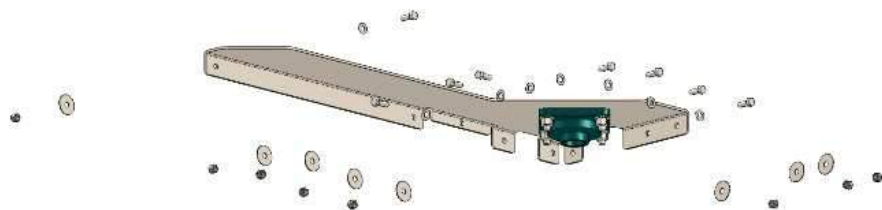


POSITION THE UPPER MOUNTING BRACKET (#23338) LEVEL IN PLACE IN THE UPPER RIGHT HAND CORNER (PASSENGER SIDE) OF THE VAN BODY AND MARK THE HOLE LOCATIONS. SOME PRE-EXISTING HOLES MAY EXIST.



W A R N I N G

- PRIOR TO DRILLING HOLES, CHECK FOR WIRING HARNESSSES ETC., BEING CAREFUL NOT TO DRILL THROUGH OUTER SKIN
- BEWARE OF SHARP EDGES



DRILL HOLES FOR [8] 3/8-16 X 1" HEX HEAD CAP SCREWS. USING [8] 3/8" SAE FLAT WASHERS, [8] 3/8" SAE FENDER WASHERS AND [8] 3/8-16 NYLOC NUTS, BOLT THE UPPER MOUNTING BRACKET INTO PLACE.



VENCO VENTURO INDUSTRIES LLC
CINCINNATI, OHIO

TITLE
INSTALL. INSTRUCTIONS

VC1000 (VHDAAA)

DATE
01-24-17

SUPERSEDES
-

SECTION
C100

CEV312

READ ALL INSTRUCTIONS FIRST BEFORE PERFORMING INSTALLATION

1. Slide Lower Mast into upper structure and leave loose (see figure 2). Install Lower Mount (making sure it is oriented correctly) onto the lower pivot shaft located at the bottom of the lower structure (see figure 3).



WARNING

- WEIGHT OF ASSEMBLY IS APPROXIMATELY 275 LBS. ADDITIONAL HELP WILL BE REQUIRED TO PERFORM THE NEXT STEP

2. Carefully lift the assembly into the van, and position the upper mast pivot shaft into the upper mounting bracket bearing (see figure 4). Insert the 1/2-13 X 4-1/2" center mast bolt through center area of mast to lock the adjustable mast to the proper height.

NOTE:

The upper mast plate must be within 1" of the bottom of the upper bearing (see figure 5).

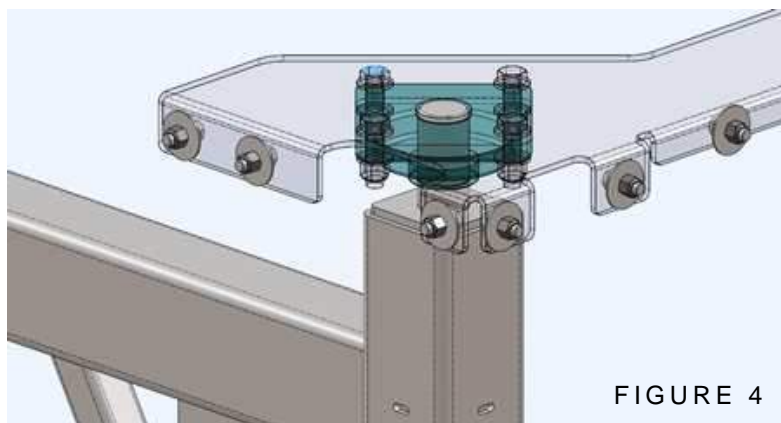


FIGURE 4

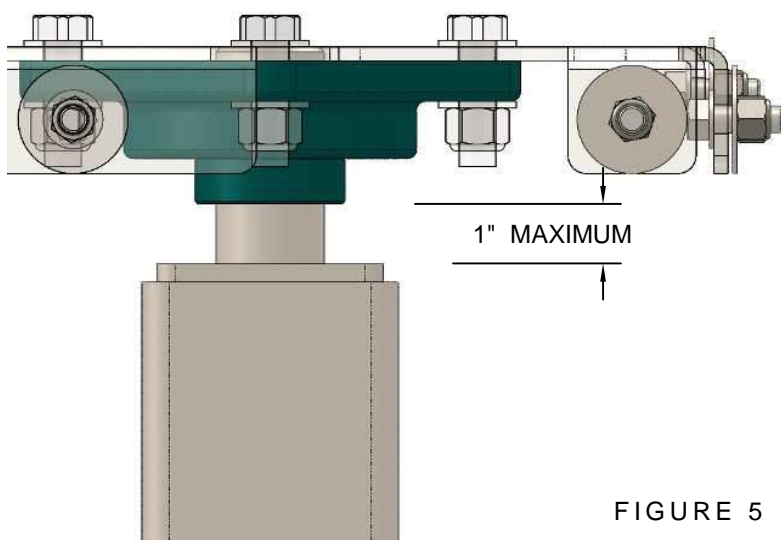


FIGURE 5

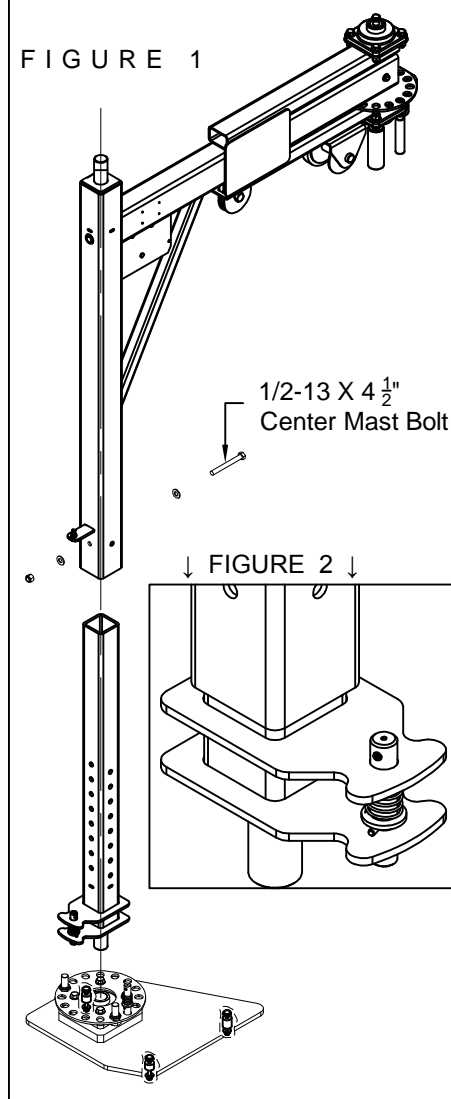


FIGURE 1

1/2-13 X 4 1/2"
Center Mast Bolt

FIGURE 2

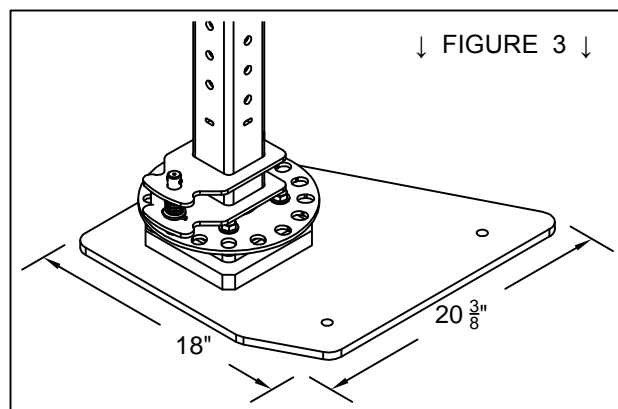


FIGURE 3



VENCO VENTURO INDUSTRIES LLC
CINCINNATI, OHIO

TITLE
INSTALL. INSTRUCTIONS

VC1000 (VHDAAA)

DATE
01-25-17

SUPERSEDES
-

SECTION
C100

CEV313

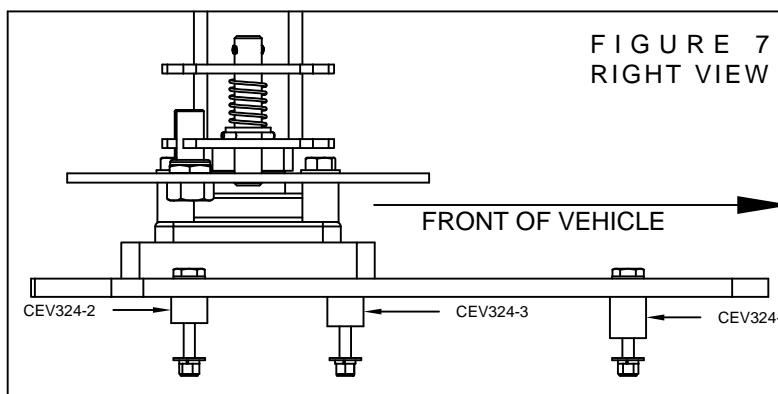
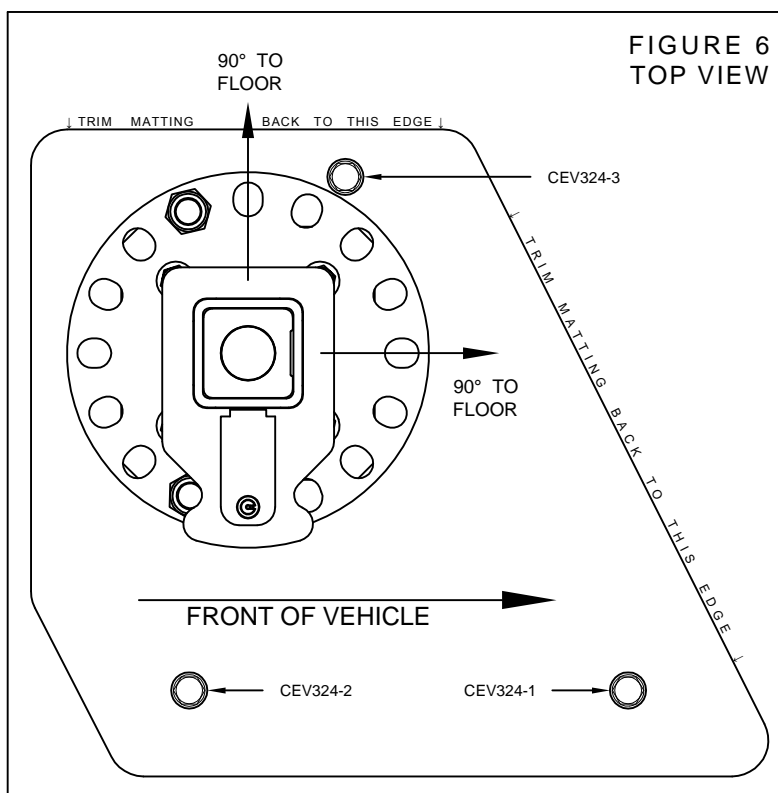
INSTALLATION INSTRUCTIONS
VC1000 (VHDAAA); SPRINTER HIGH ROOF

3. Remove [3] Cargo Rings located near the rear passenger side of the vehicle (the Cargo Ring holes will be used for the next step).
4. Moving the lower mount, position the crane so the mast is 90° with the floor of the van in at least two perpendicular directions (see figure 6). Once mast is squared with the floor, confirm that the mounting holes align with cargo ring holes. Insert the [3] spacers to the location indicated in figures 6 and 7. Attach with mounting hardware. Trim any floor matting to the shape of the mounting plate.



C A U T I O N

- IF LOWER MOUNT IS NOT INSTALLED IN LINE WITH UPPER MOUNT, INTERFERENCE MAY OCCUR BETWEEN THE BOOM AND THE VEHICLE'S DOOR FRAME - THE MAST MUST BE 90° TO THE FLOOR OF THE VAN
- PRIOR TO DRILLING, MAKE SURE THERE ARE NO OBSTACLES UNDER THE FLOOR (i.e. BRAKE LINES, FUEL LINES, ETC.)



VENCO VENTURO INDUSTRIES LLC
CINCINNATI, OHIO

TITLE
INSTALL. INSTRUCTIONS

VC1000 (VHDAAA)

DATE
01-25-17

SUPERSEDES
-

SECTION
C100

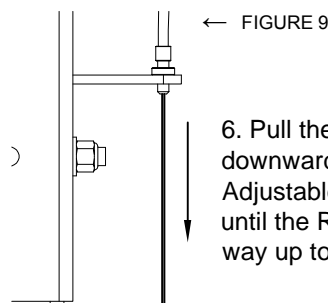
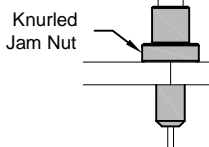
CEV314

INSTALLATION INSTRUCTIONS VC1000 (VHDAAA); SPRINTER HIGH ROOF

Once the crane is installed in the van, the rotation stop release cable must be cut to the proper length.

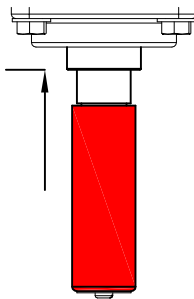
5. Ensure that the Rotation Stop Release Adjustable Conduit Retainer (#23366) at the bottom of the Rotation Stop Cable Conduit (#23364) is adjusted to its lowest position (see figure 8).

FIGURE 8



6. Pull the Rotation Stop Release Cable (#23365) downward away from the Rotation Stop Release Adjustable Conduit Retainer (#23364) (see figure 9) until the Red Handle Grip (#23337) is pulled all the way up to its top position (see figure 10).

FIGURE 10



7. With the handle still in the top position, hold the cable next to the Rotation Stop Pin (#23343) and cut the cable near the bottom of the pin (see figure 11).

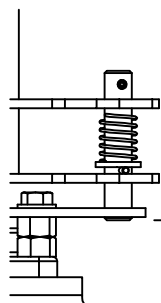


FIGURE 11

8. With the handle still in the top position, feed cable through the stop pin and gently screw one of the set screws in until it touches the cable. This will center the cable between the set screws.

9. Gently tighten the opposing set screw until it pinches the cable with enough force to prevent the cable from slipping when the release handle is pulled. Do not over tighten the screws as the cable can be damaged (see figure 12).

10. Ensure that the cable can pull the rotation stop pin up far enough to clear the stop pin disk and allow rotation of the crane mast. The conduit retainer can be unscrewed to increase the travel of the stop pin until it clears the stop disk. Ensure that the knurled jam nut is tightened down once the adjustment is set.

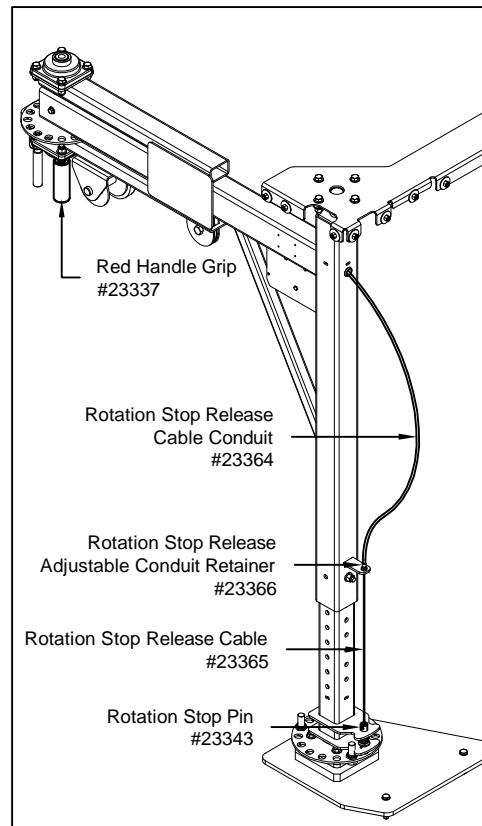
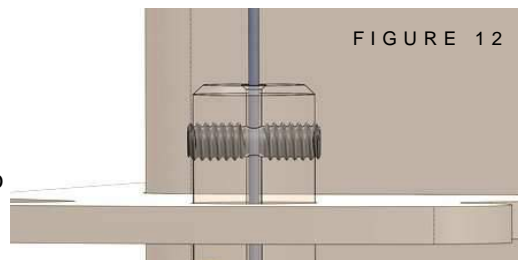


FIGURE 12



NOTES:

Do not cut the cable until the crane is installed in the van and it is determined that the crane mast is fully extended as far as possible into the upper bearing. This height can vary from one installation to another, requiring each installation to have a slightly different cable length.

Do not cut the cable too short. It is better to leave the cable as long as possible provided it does not extend below the bottom of the rotation stop pin.

Over tightening the set screws can damage or cut the cable. The set screws need only be tight enough to overcome the force of the spring on the rotation stop.

It may be necessary to lift the stop pin slightly when tightening the set screws to allow the cable to provide enough travel to fully disengage the stop pin before the release handle reaches the end of its travel.



VENCO VENTURO INDUSTRIES LLC
CINCINNATI, OHIO

TITLE
INSTALL. INSTRUCTIONS

VC1000 (VHDAAA)

DATE
01-26-17

SUPERSEDES
-

SECTION
C100

CEV315

INSTALLATION INSTRUCTIONS (ELECTRICAL)
VC1000 SERIES VAN CRANES ▲

Using the [2] battery cables in the kit (provided), install the ground (black) and 12V (red) to the crane's contactor box per drawing CEV223.

Install the master disconnect switch close to the crane and within reach of the operator. Using the red battery cable, route the cable to the disconnect switch. The cable will need to be cut to length. Strip both ends of cable, install the heat shrink tube and the battery terminal (provided). Crimp or solder the terminals on each end and slide the heat shrink insulator up onto the terminal. Use a heat gun or equivalent to seal the tube to the cable.

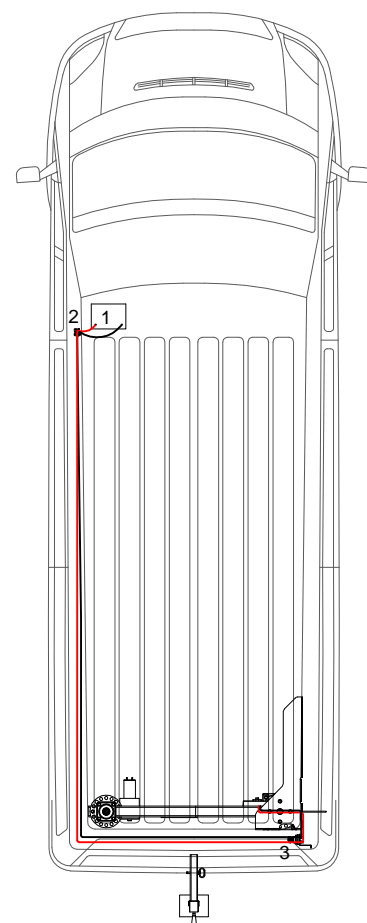
Connect the crane side of the cable to the master disconnect switch and the other cable's end to the second terminal on the switch.

NOTE: Both ground and 12v cables must be routed directly to the battery (not included).

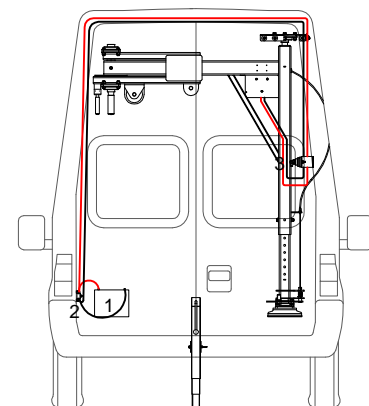
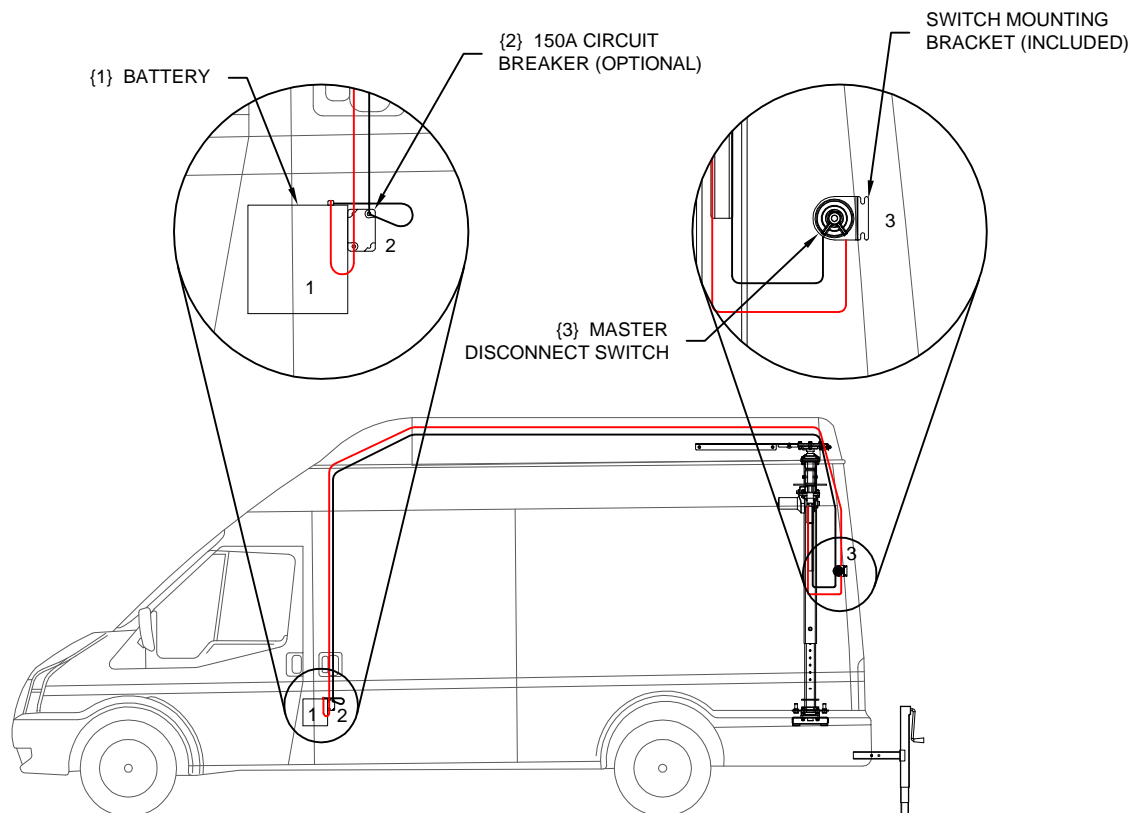
Route cables using the vehicles current harness path. Secure both cables to the battery, while protecting them from sharp edges, heat or anything that could damage the cables. Install the black cable to the negative (-) post and red cable to the positive (+) post. ▲

NOTE: If you purchased the optional 12v 150 amp circuit breaker, install the circuit breaker as close to the battery as possible. The red 12v cable will need to be cut and the heat shrink & terminals installed in the same manner as the master disconnect switch.

Plug the pendant into the contactor box and turn the master disconnect switch 'ON'. Crane is ready for use. When crane is not in use, the master disconnect switch must be 'OFF' and the pendant removed.



ILLUSTRATIONS ARE FOR
REFERENCE ONLY ▲

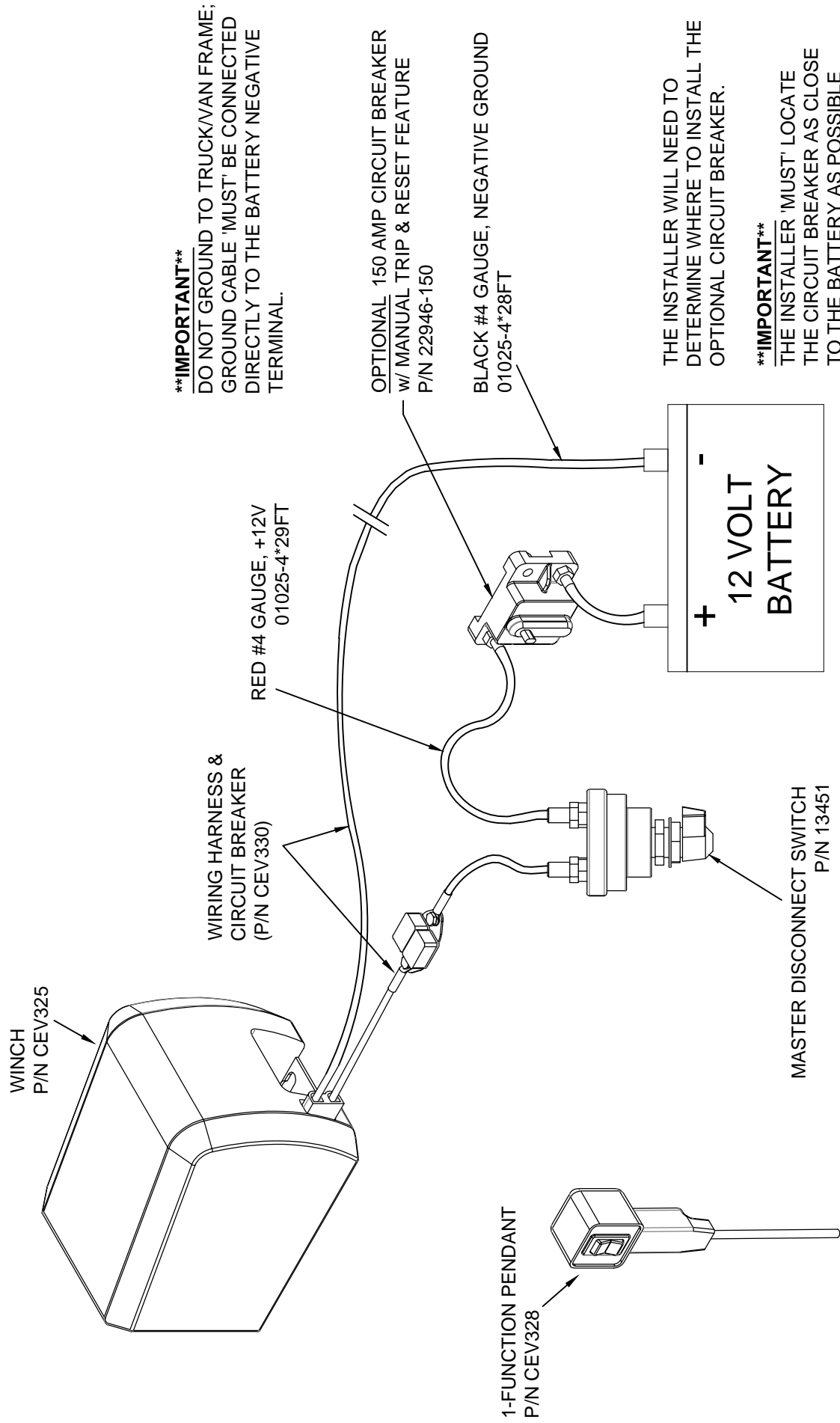


VENCO VENTURO INDUSTRIES LLC
CINCINNATI, OHIO

TITLE
ELEC. INSTALL. INSTRCTNS
VC1000 SERIES VAN CRANES ▲

DATE
01-26-17C
SUPERSEDES
01-23-17B

SECTION
C100
CEV222



****IMPORTANT****
DO NOT GROUND TO TRUCK/VAN FRAME;
GROUND CABLE 'MUST' BE CONNECTED
DIRECTLY TO THE BATTERY NEGATIVE
TERMINAL.

THE INSTALLER WILL NEED TO
DETERMINE WHERE TO INSTALL THE
OPTIONAL CIRCUIT BREAKER.

****IMPORTANT****
THE INSTALLER 'MUST' LOCATE
THE CIRCUIT BREAKER AS CLOSE
TO THE BATTERY AS POSSIBLE



VENCO VENTURO INDUSTRIES LLC
CINCINNATI, OHIO

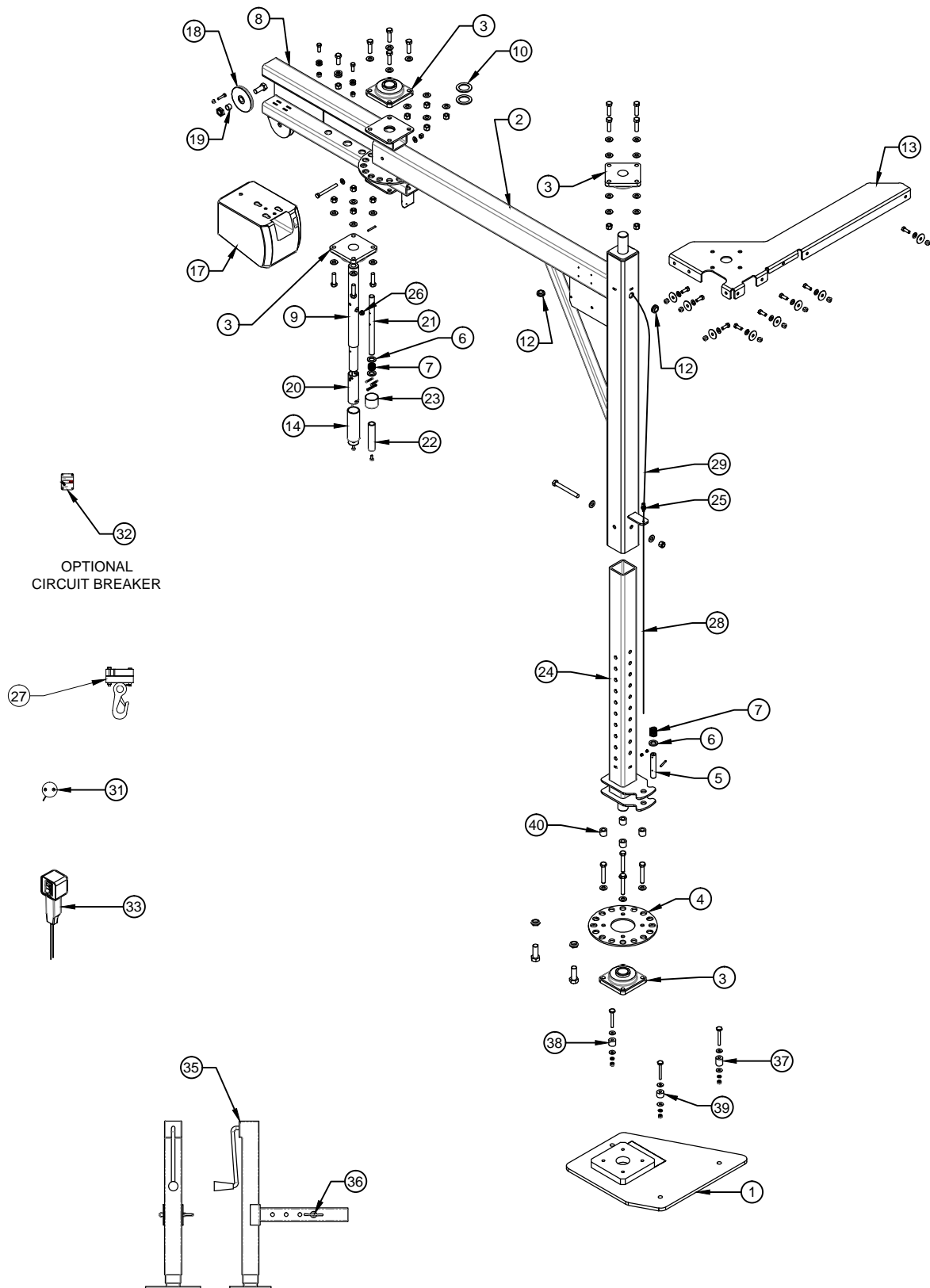
TITLE		DATE	SECTION
WIRING DIAGRAM		05-13-19A	C200
ESV1000 & VC1000		SUPERSEDES 02-26-19	CEV332

SECTION 400

REPLACEMENT PARTS



VENCO VENTURO INDUSTRIES LLC
CINCINNATI, OHIO



* SEE REPLACEMENT PARTS LIST CEV319



VENCO VENTURO INDUSTRIES LLC
CINCINNATI, OHIO

TITLE

REPLACEMENT PARTS DWG

DATE

05-14-19A

SECTION

C400

VC1000; SPRINTER HI-ROOF

SUPERSEDES

01-26-17

CEV318

REPLACEMENT PARTS LIST
VC1000 (VHDAAA); SPRINTER HIGH ROOF

ITEM	PART NUMBER	QTY	DESCRIPTION
1	CEV302	1	WELDED ASSY; LOWER MOUNTING PLATE
2	23321	1	PRIMARY/MAST BOOM UPPER WELDMENT
3	23335	4	1.50 BORE, 4 BOLT FLANGE BEARING
4	23333	1	ROTATION STOP DETENT PLATE
5	23343	1	ROTATION STOP PIN
6	12534-1	3	MACHINERY BUSHING, 3/4 "
7	22667	2	SPRING
8	23322	1	SECONDARY BOOM WELDMENT
9	23342	1	SECONDARY PIVOT TUBE
10	23351	2	THRUST WASHER
11	-	-	-
12	20889	2	GROMMET
13	23338	1	UPPER MOUNT BRACKET
14	23337	1	RED VINYL GRIP, 1.50"
15	-	-	-
16	-	-	-
17	CEV325	1	WINCH; DUTTON-LAINSON SA5015DC
18	19646	1	SHEAVE WITH BUSHING
19	13168-7	1	SHEAVE SLEEVE
20	23336	1	ROTATION LOCK RELEASE HANDLE WELDMENT
21	23363	1	SECONDARY ROTATION STOP PIN
22	16-00064	1	RED VINYL HANDLE GRIP, .75"
23	22676	1	VINYL CAP, BLACK
24	23355	1	MAST LOWER WELDMENT
25	23366	1	PRIMARY ROTATION STOP RELEASE CABLE ADJUSTER
26	13463-2	1	SET SCREW COLLAR, CABLE HOUSING RETAINER
27	16735	1	HEADACHE BALL ASSEMBLY
28	23364	1	PRIMARY ROTATION LOCK RELEASE CABLE
29	23365	1	PRIMARY ROTATION LOCK RELEASE CABLE CONDUIT
30	-	-	-
31	13451	1	MASTER DISCONNECT SWITCH
32	22964-150	1	CIRCUIT BREAKER, 150 AMP, MANUAL RESET/TRIP
33	CEV328	1	PENDANT
34	CEV217	1	FIELD SERVICE LABEL KIT
35	CEV210	1	JACK LEG WELDED ASSEMBLY
36	18502	1	HITCH PIN ASSY W/LANYARD
37	CEV324-1	1	SPACER, FLOOR MOUNTING PLATE, 1.14" LG
38	CEV324-2	1	SPACER, FLOOR MOUNTING PLATE, 0.732" LG
39	CEV324-3	1	SPACER, FLOOR MOUNTING PLATE, 0.82" LG
40	23348	4	STOP DISK SPACER

* SEE REPLACEMENT PARTS DWG CEV318

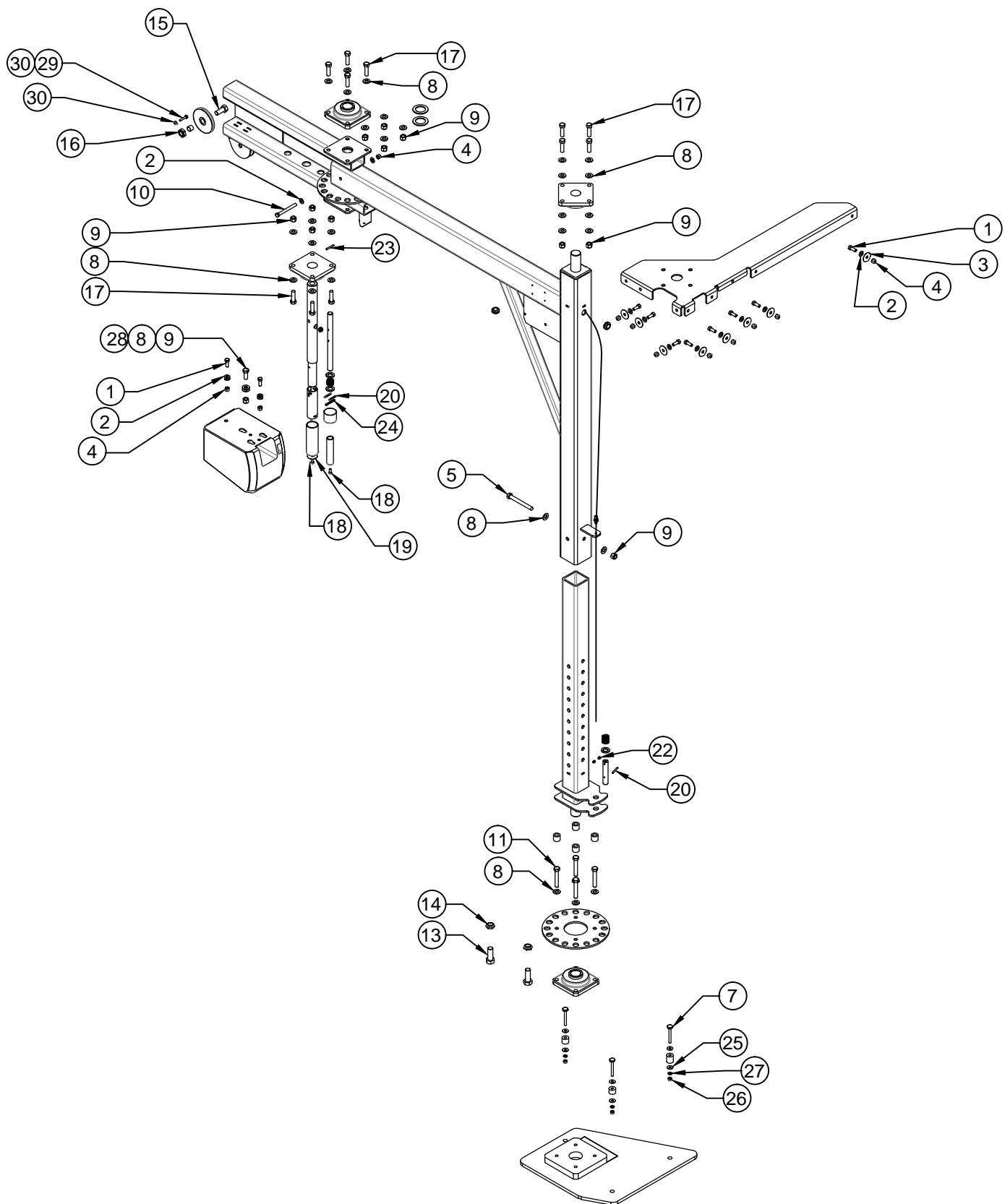


VENCO VENTURO INDUSTRIES LLC
CINCINNATI, OHIO

TITLE
REPLCMNT PART LIST
VC1000, SPRINTER HI-RF

DATE
05-14-19A
SUPERSEDES
01-26-17

SECTION
C400
CEV319



SEE REPLACEMENT HARDWARE LIST CEV321



VENCO VENTURO INDUSTRIES LLC
CINCINNATI, OHIO

TITLE

REPLACEMENT HW DWG

DATE

05-14-19A

SECTION

C400

VC1000; SPRINTER HI-ROOF

SUPERSEDES

01-26-17

CEV320

REPLACEMENT HARDWARE LIST
VC1000 (VHDAAA); SPRINTER HIGH ROOF

ITEM	QTY	PART NO.	DESCRIPTION
1	10	!HHCS03816100	HEX HEAD CAP SCREW; 3/8-16 X 1" LG, GR. 5
2	14	!FWSH-038SAE	FLAT WASHER; 3/8", SAE
3	8	!FWSH-038F	FENDER WASHER; 3/8"
4	11	!LNUT-03816	LOCK NUT; 3/8-16, NYLOC
5	1	!HHCS02520450S	HEX HEAD CAP SCREW; 1/4-20 X 4-1/2" LG, GR. 5, STAINLESS STEEL (S/S)
6	-	-	-
7	3	!HHCSM8-70	HEX HEAD CAP SCREW; 8mm-1.25 X 70mm LG., GR. 8.8
8	30	!FWSH-050	FLAT WASHER; 1/2"
9	13	!LNUT05013	LOCK NUT; 1/2-13, NYLOC
10	1	!HHCS03816375	HEX HEAD CAP SCREW; 3/8-16 X 3-3/4" LG., GR. 5
11	4	!HHCS05013300-8	HEX HEAD CAP SCREW; 1/2-13 X 3" LG., GR. 8
12	-	-	-
13	2	!HHCS07510200	HEX HEAD CAP SCREW; 3/4-10 X 2" LG., GR. 5
14	2	!JNUT-07510N	JAM NUT; 3/4-10, NYLOC
15	1	!HHCS06311150-8	HEX HEAD CAP SCREW; 5/8-11 X 1-1/2" LG., GR. 8
16	1	!JNUT-06311N	JAM NUT; 5/8-11, NYLOC
17	14	!HHCS05013175	HEX HEAD CAP SCREW; 1/2-13 X 1-3/4" LG., GR. 5
18	2	!SHPMS02520063S	PAN HEAD CAP SCREW; 1/4-20 X 5/8" LG., GR. 5, S/S
19	1	23350	FENDER WASHER; 1/4", 1-1/2" O.D.
20	3	!RPIN-019150-SS	ROLL PIN; 3/16 X 1-1/2, STAINLESS STEEL
21	-	-	-
22	2	23349	SET SCREW; 1/4-20
23	1	!RPIN-019125-SS	ROLL PIN; 3/16 X 1-1/4, STAINLESS STEEL
24	1	!RPIN-019175-SS	ROLL PIN; 3/16 X 1-3/4, STAINLESS STEEL
25	6	!FWSH-031	FLAT WASHER; 5/16"
26	3	!LNUT-03118-N	NYLOCK NUT; 5/16-18
27	3	!LWSH-031	LOCK WASHER; 5/16, GR. 5, ZINC
28	1	!HHCS05013125-5	HEX HEAD CAP SCREW; 1/2-13 X 1-1/4, GR. 5, ZINC
29	2	!FWSH-025S	FLAT WASHER; 1/4"
30	1	!JNUT-02520NS	JAM NUT; 1/4-20, NYLOCK
31	1	!HHCS02520125S	HEX HEAD CAP SCREW; 1/4-20 X 1-1/4" LG., GR. 5, S/S
32	-	-	-
33	-	-	-
34	-	-	-
35	-	-	-

* SEE REPLACEMENT HARDWARE DRAWING CEV320



VENCO VENTURO INDUSTRIES LLC
CINCINNATI, OHIO

TITLE
REPLCMNT HDWR LIST

VC1000; SPRINTER HI-RF

DATE
05-14-19A

SUPERSEDES
01-26-17

SECTION
C400

CEV321



VENTURO CRANES LIMITED WARRANTY POLICY

Venturo products are built to last...we guarantee them.

As a purchaser of any new Venturo product covered by warranty, you will receive 1 year of the most complete coverage available...and, at no added cost to you.

1-Year Limited Warranty Policy

This limited policy warrants new products of Venturo to be free from defects in material and workmanship for a period of one (1) year from date of original installation. OEM products or accessories purchased by Venturo as part of or offered with our product will carry the OEM manufacturer's respective warranty. Our warranty covers:

- ***Repair or replacement of product***
- ***Labor to repair or replace product***
- ***Freight to return and/or replace product***

We shall not be liable for any contingent liabilities arising out of the improper function of any products. Warranty shall become void if the product is improperly installed, modified, damaged, abused or used for application other than intended use. There is no warranty of merchantability, fitness for a particular purpose, warranty arising from course of dealing or usage of trade, or any other implied or expressed warranty, except as made specifically herein. This warranty supersedes all previous warranties, written or implied.

Warranty Claims

Venco Venturo Industries LLC will make a good faith effort for prompt correction or other adjustment with respect to any product, which proves to be defective after our inspection and within the warranty period. Before any repairs are attempted or before returning any product, your Venturo Distributor is required to obtain a warranty claim number. This number is necessary for any claim to be considered. To obtain a warranty claim number, Venturo requires the model and serial number. Only authorized Venturo Distributors can perform warranty. For the name and address of your local Venturo Distributor call the **Warranty Claim Department - 513-772-8448**.

WARNING - It is the responsibility of the installer to ensure the installation is completed according to the manufacturer's recommendations, ensure the ultimate user understands how to operate product in a safe manner, and understands the need for regular service and maintenance by an authorized Venturo Distributor. No modifications or alterations may be made to any Venturo product without the expressed written consent of Venco Venturo Industries LLC. Installation of any Venturo product must be done by an authorized Venturo Distributor, to the standards of the industry; including maintenance, service and affixing of all instruction, safety and warning decals. Users should be instructed as to the safe operation at time of delivery. Maintenance, service, operation and safety warning decals are available on request from Venco Venturo Industries LLC.

VENCO VENTURO INDUSTRIES LLC
12110 BEST PLACE | CINCINNATI, OHIO 45241
P: 800-226-2238 | F: 513-326-5427
www.venturo.com