

# **VENTURO**

## **OWNER'S MANUAL**

**26100-PHX(-LC)**

# **PARTS & INSTALLATION MANUAL**

---

## **26100-PHX(-LC)**

---

Included in this manual:

### **26100-PHX(-LC)**

- Stabilizer with Hydraulic Pullout and Hydraulic Legs
- Available in “Less Crosstube” (-LC) configuration

VENCO VENTURO INDUSTRIES LLC  
12110 BEST PLACE | CINCINNATI, OHIO 45241  
800-226-2238



This manual also available online at [www.venturo.com](http://www.venturo.com).



# 26100-PHX(-LC)

INST-26126 - 7/2/2025 (Rev: NEW5)

7607100A	SECTION 100: DESCRIPTION & SPECIFICATIONS
25480	INSTALLATION GUIDELINES
26127	INSTALLATION DIMENSIONS - SHORT LEG
26132	INSTALLATION DIMENSIONS - LONG LEG
7607200A	SECTION 200: INSTALLATION
25484-2	RECOMMENDED MOUNTING TO TRUCK FRAME
25447-1	SELECTOR VALVE OVERVIEW
26131	HYDRAULIC MAPPING - 1 OF 2
25449	HYDRAULIC MAPPING - 2 OF 2
25485	DEPARTURE ANGLE, REAR-MOUNTED STABILIZERS
26130	MOUNTING THE LEGS
7607400A	SECTION 400: REPLACEMENT PARTS
26128	REPLACEMENT PARTS DRAWING
26129	REPLACEMENT PARTS LIST
12-00073_VNT1	WARRANTY PAGE



# **SECTION 100**

## **DESCRIPTION**

### **&**

## **SPECIFICATIONS**



VENCO VENTURO INDUSTRIES LLC  
CINCINNATI, OHIO

## STABILIZER INSTALLATION GUIDELINES

Read instructions completely prior to starting installation. If this unit is to be installed on a Venturo crane body, continue to the stabilizer assembly section of this manual.

Prior to mounting the stabilizer crosstube, orient the stabilizer so the longer pullout is on the crane side of the truck.

### REAR MOUNTED

Crosstube should be centered at the rear of the truck and tied into the truck frame, body longills, and crane support. Installer is responsible for proper mounting brackets and hardware that will be needed during this process. If unit is to be mounted on a service body, do not attach crosstube to body sheet metal unless otherwise specified. Allow clearance between crosstube and body for the stabilizer legs to be fully retracted. Consult chassis up-fitter guide prior to installation for proper welding and bolting procedures to chassis.

*See the 'RECOMMENDED MOUNTING TO TRUCK FRAME' page*

Leg installation (refer to assembly section of manual) legs are adjustable to maintain proper ground penetration of 4" to 6". The stabilizer is designed to level the truck and not lift the chassis off of the ground. They are designed to work in conjunction with the chassis suspension to stabilize the unit with the bulk of the load being supported by the chassis suspension and tires. Tires must be set at the proper pressure according to the chassis manufacture, stabilizers fully extended, and legs deployed on firm, level ground prior to crane use.

**IMPORTANT** - When legs are fully retracted in the stowed position, a 15° degree departure angle between the bottom of the rear tire and the lowest point of the stabilizer is recommended.

*See the 'DEPARTURE ANGLE' page*

For hydraulic stabilizers, the control valve and selector valve are supplied in kit. It is the installer's responsibility to supply necessary hoses and fittings between these valves and stabilizer. Refer to proper hydraulic schematic for your particular stabilizer model.

**IMPORTANT** - The selector valve is designed to separate the crane and stabilizer hydraulic circuits. This will not allow stabilizer use while in crane mode.

### FRONT MOUNTED

Front mounted crosstube will be located on top of the chassis frame and welded to body longills. Additional shear plates (installer supplied) to be welded to crosstube and bolted to chassis frame. Crosstube to be spaced away from body for leg clearance when fully retracted. See assembly section of manual for pullout and leg installation detail.



VENCO VENTURO INDUSTRIES LLC  
CINCINNATI, OHIO

INSTALLATION GUIDELINES

STABILIZERS

DATE

12-08-23A

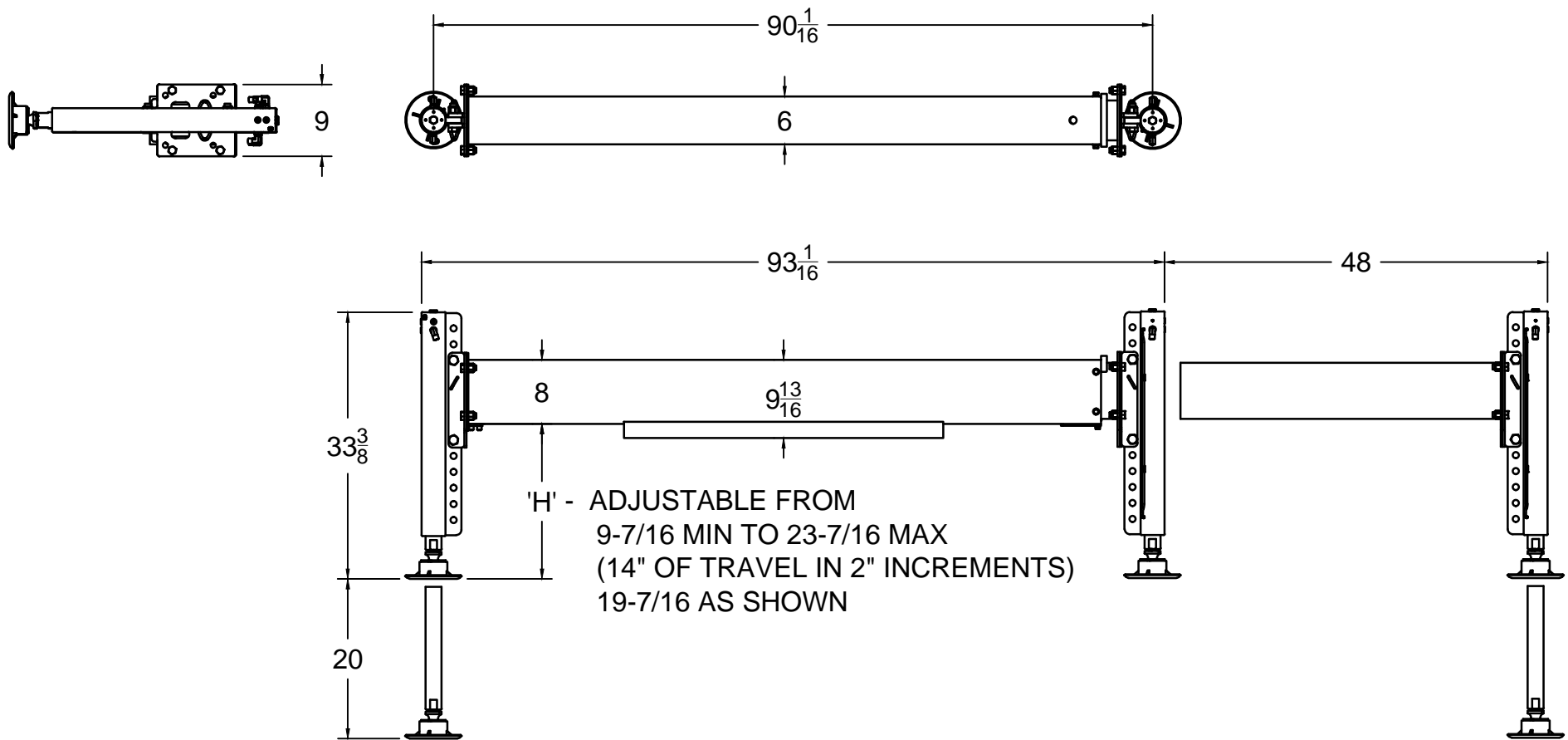
SUPERSEDES

01-17-17

SECTION

C200

25480



VENCO VENTURO INDUSTRIES LLC  
CINCINNATI, OHIO

TITLE  
INSTALLATION DIMENSIONS

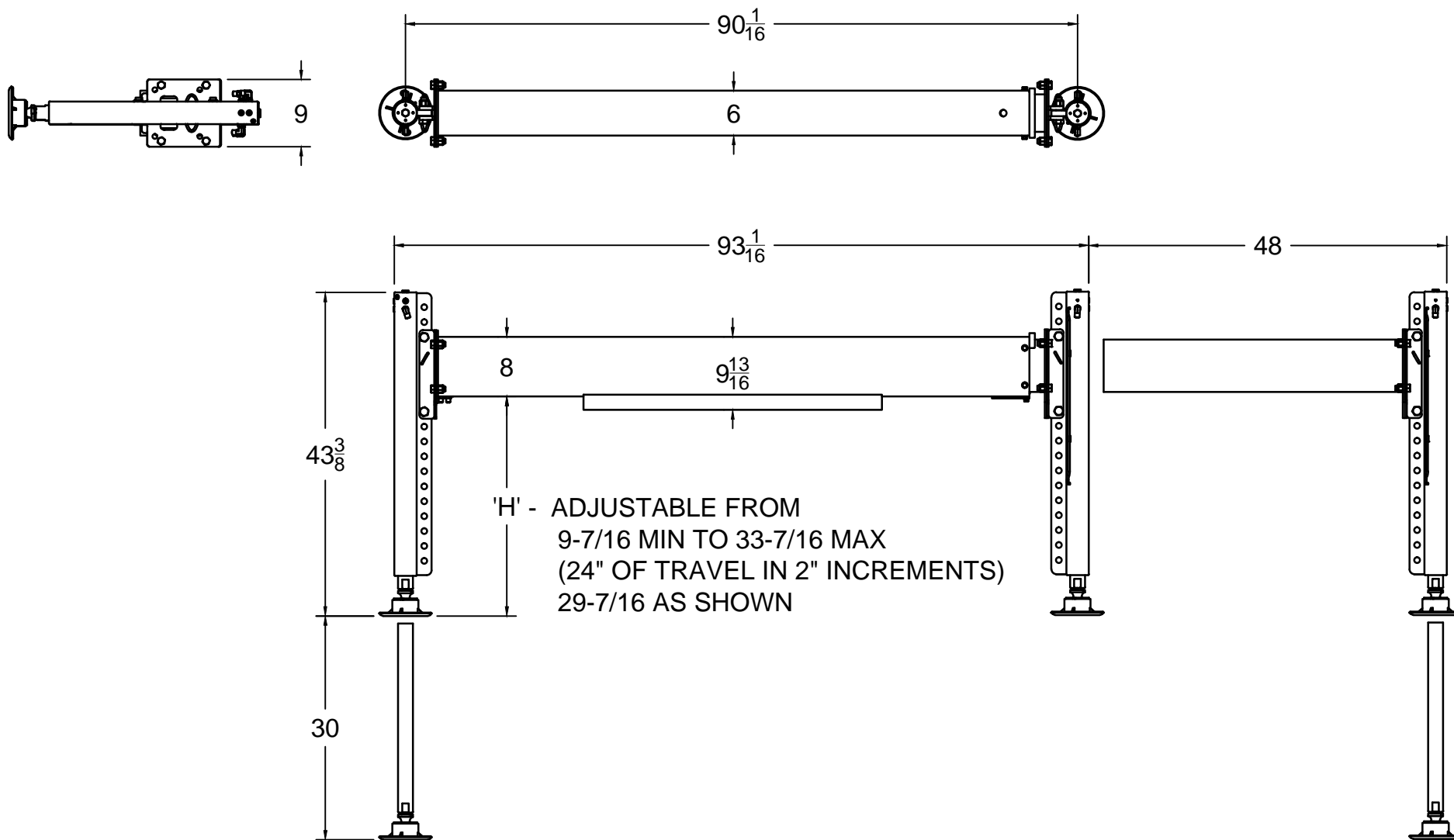
25500/26100-PHX-SL STABILIZER

DATE  
08-23-24A

SUPERSEDES  
12-08-23

SECTION  
C100

26127



VENCO VENTURO INDUSTRIES LLC  
 CINCINNATI, OHIO

TITLE  
 INSTALLATION DIMENSIONS

▲  
 25500/26100-PHX-LL STABILIZER

DATE  
 08-23-24A

SUPERSEDES  
 01-25-24

SECTION  
 C100

26132

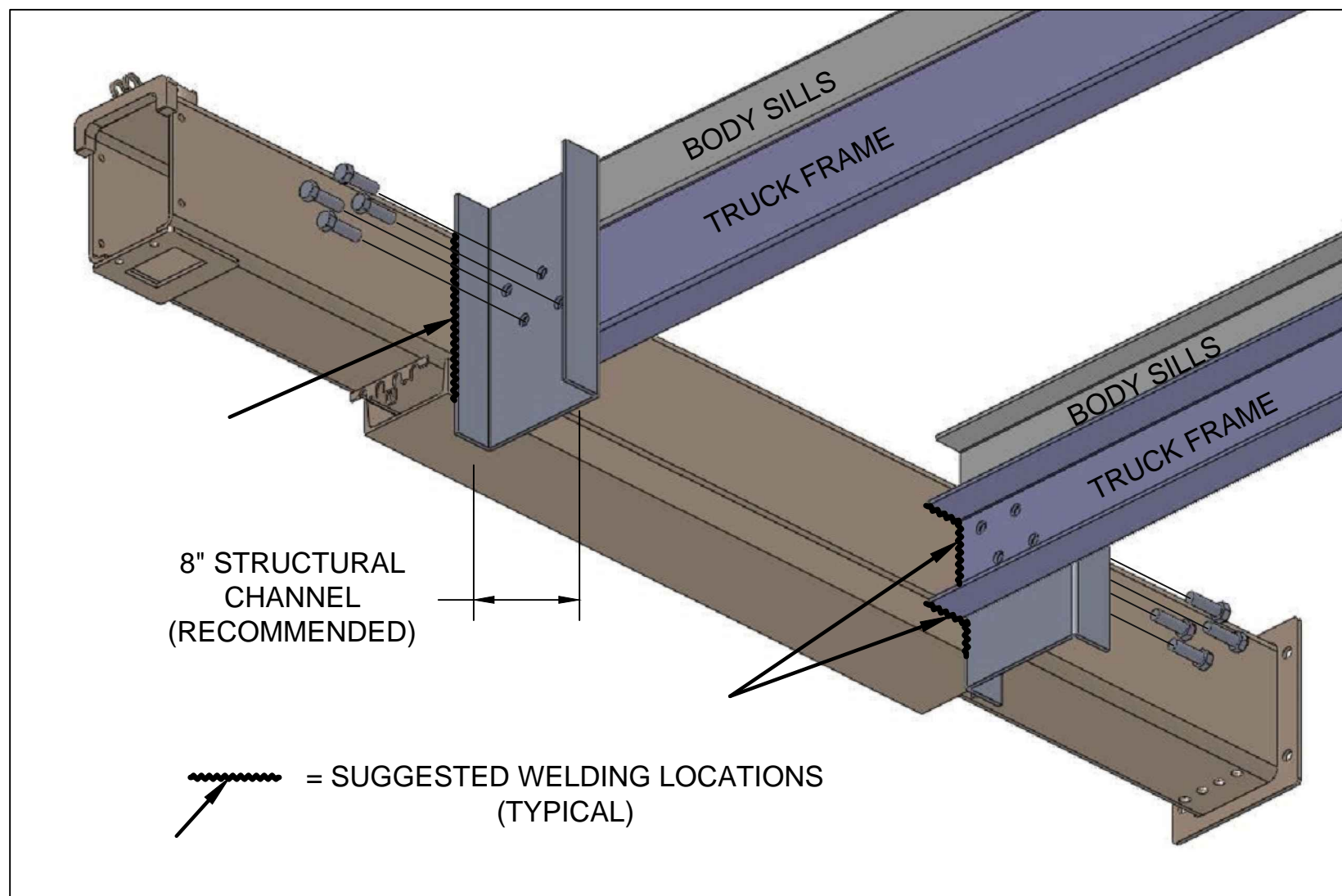


# SECTION 200

# INSTALLATION



VENCO VENTURO INDUSTRIES LLC  
CINCINNATI, OHIO



VENCO VENTURO INDUSTRIES LLC  
CINCINNATI, OHIO

## RECOMMENDED MOUNTING TO TRUCK FRAME

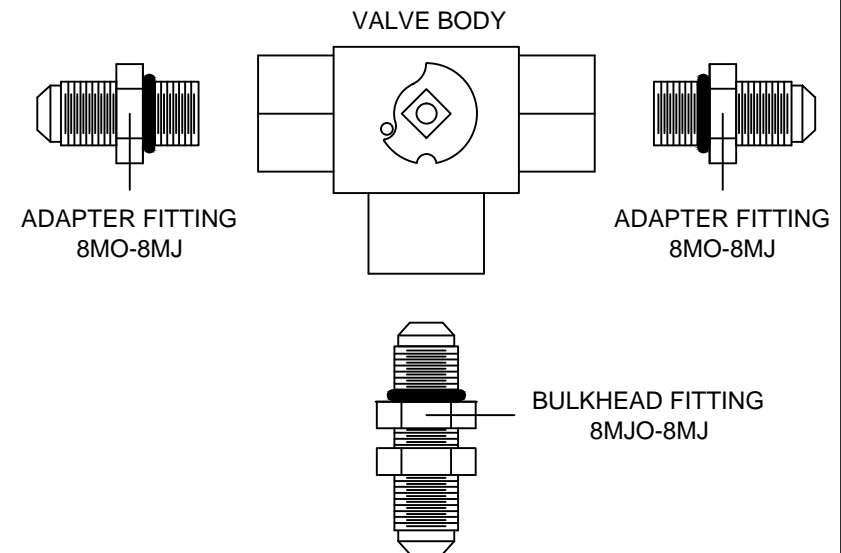
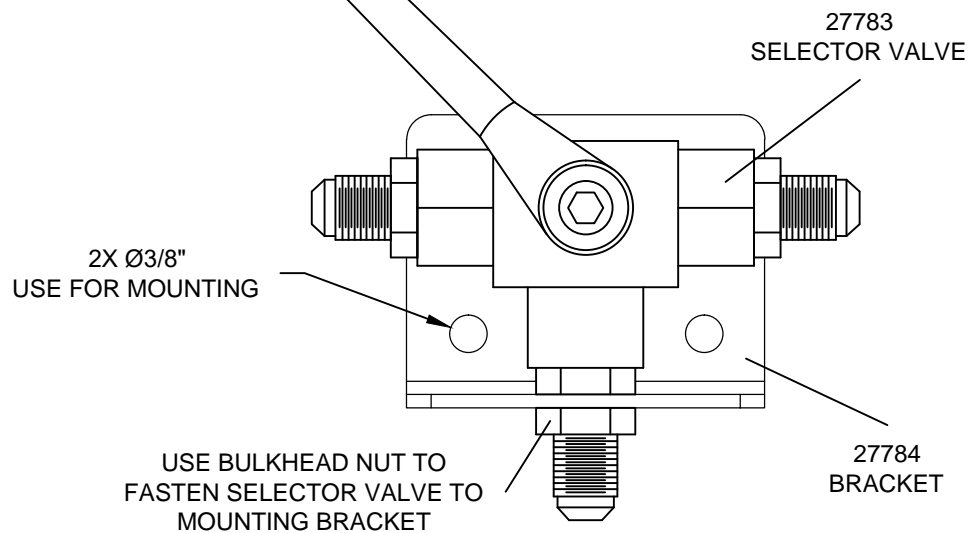
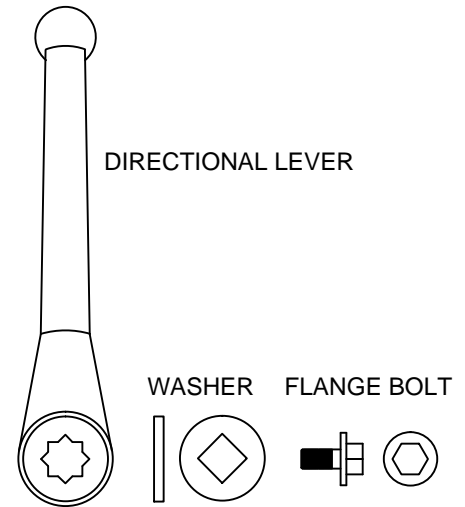
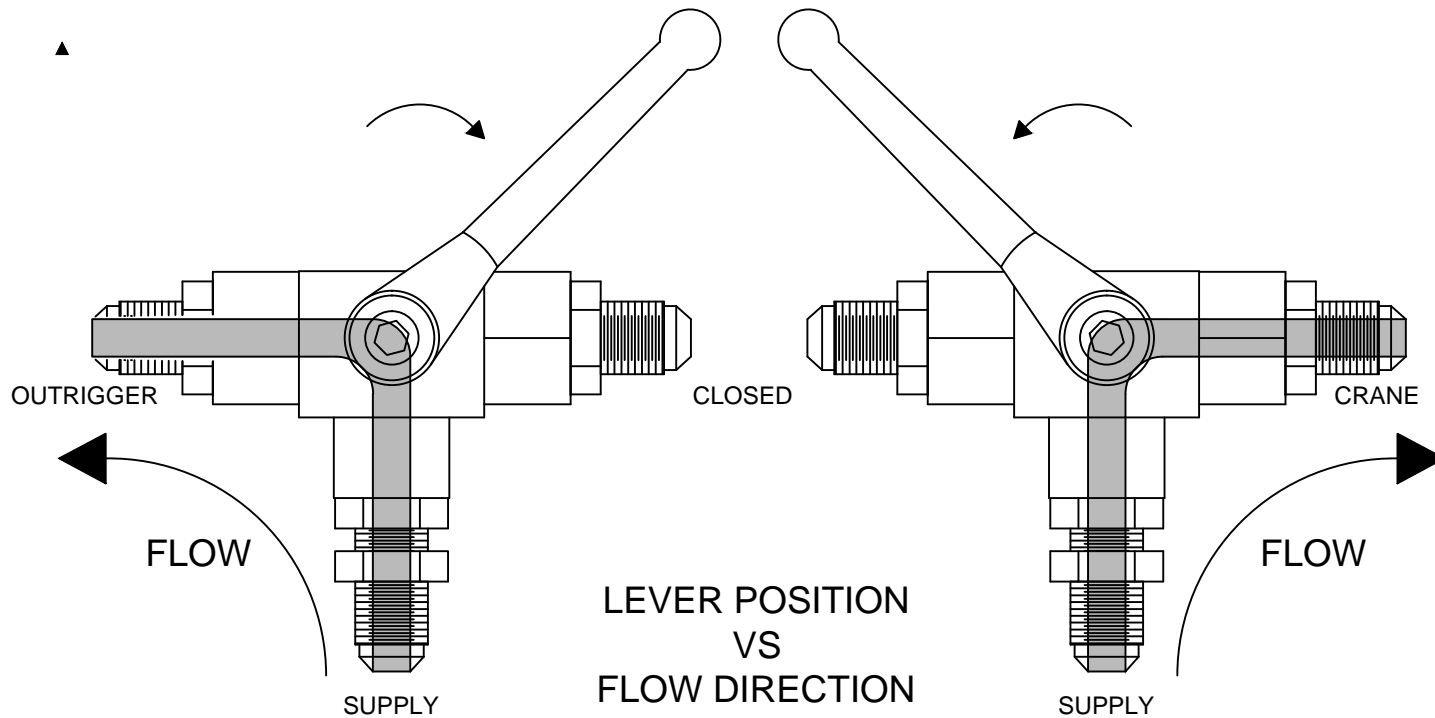
25100/26100 SERIES STABILIZERS

DATE  
12-08-23A

SUPERSEDES  
01-20-17

SECTION  
C200

25484-2



VENCO VENTURO INDUSTRIES LLC  
CINCINNATI, OHIO

## SELECTOR VALVE OVERVIEW

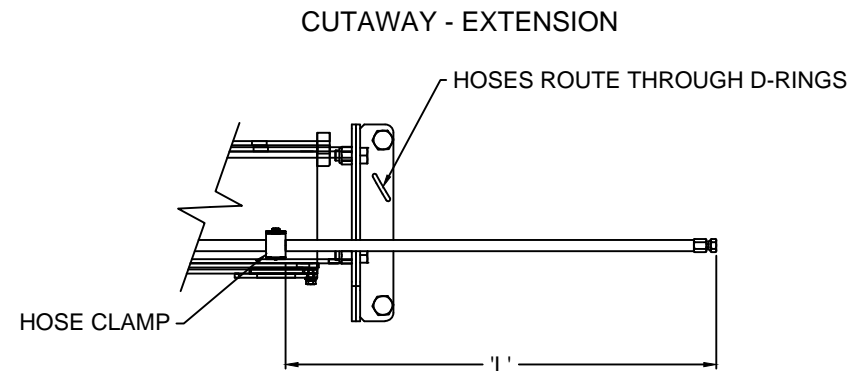
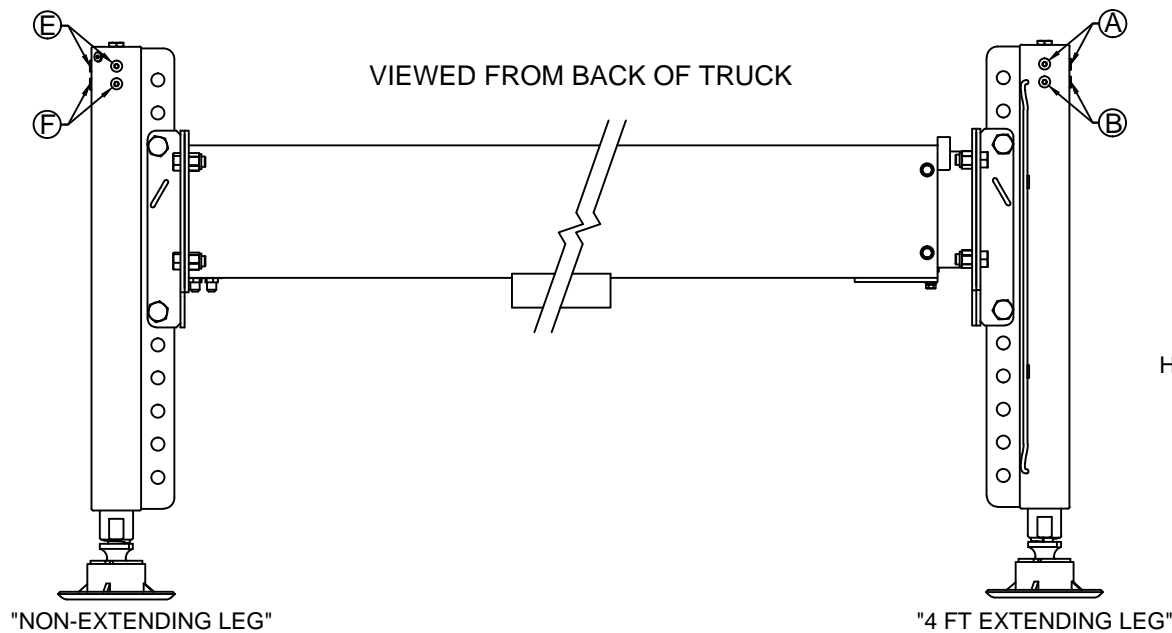
HYDRAULIC CRANES & STABILIZERS

DATE  
12-07-23B

SUPERSEDES  
01-20-17A

SECTION  
C200

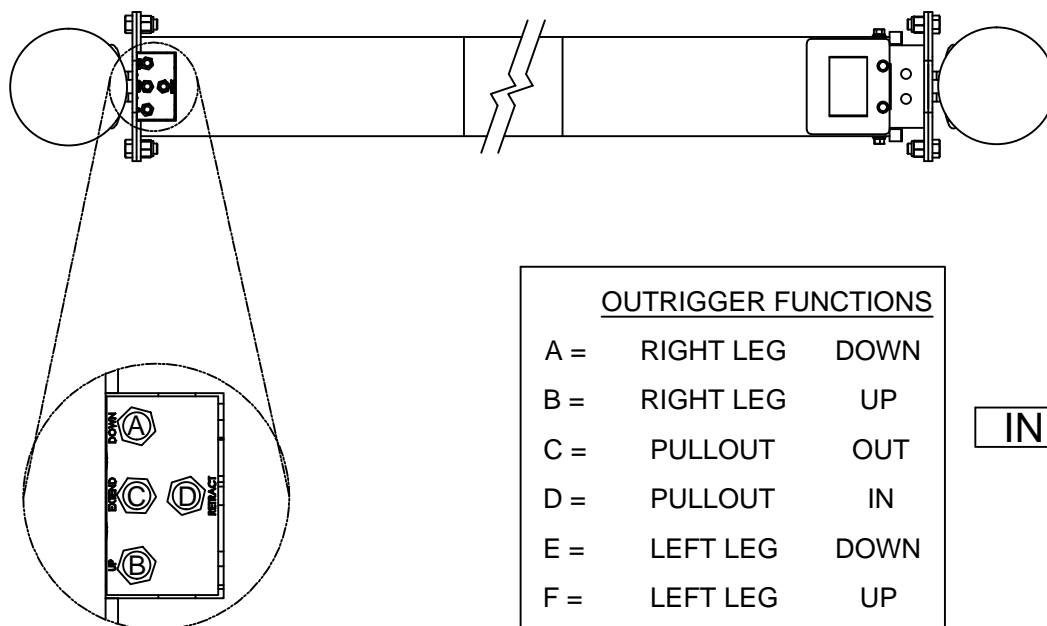
25447-1



CLAMP LOCATION FOR LOOPING  
EXTENSION HOSE

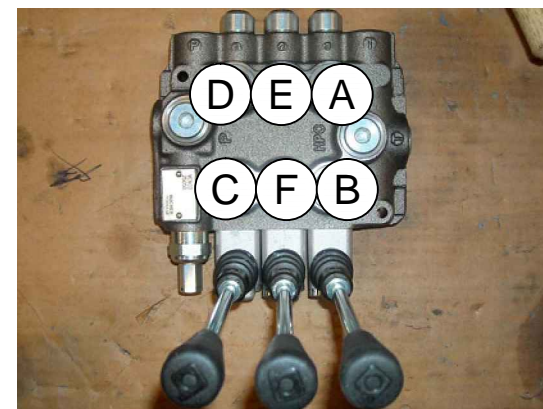
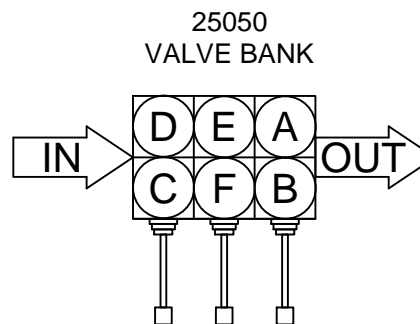
MODEL	'L'
26100-PHX-SL	26 INCHES
26100-PHX-LL	36 INCHES

BOTTOM (UNDERSIDE)



OUTRIGGER FUNCTIONS

A =	RIGHT LEG	DOWN
B =	RIGHT LEG	UP
C =	PULLOUT	OUT
D =	PULLOUT	IN
E =	LEFT LEG	DOWN
F =	LEFT LEG	UP

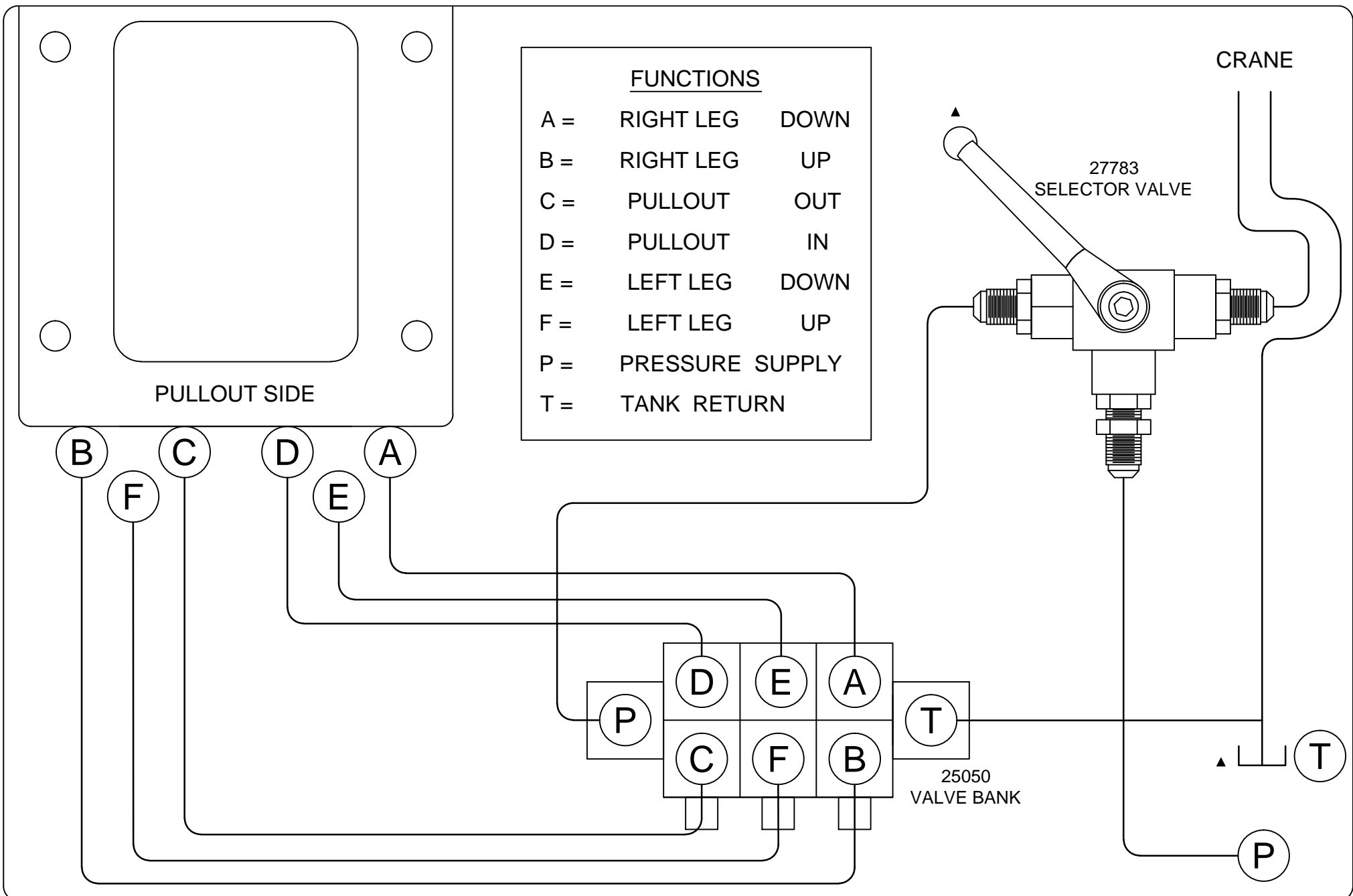


VENCO VENTURO INDUSTRIES LLC  
CINCINNATI, OHIO

TITLE  
HYDRAULIC MAPPING - 1 OF 2  
26100-PHX STABILIZERS

DATE  
02-19-24A  
SUPERSEDES  
12-20-23

SECTION  
C200  
26131



VENCO VENTURO INDUSTRIES LLC  
CINCINNATI, OHIO

## HYDRAULIC MAPPING, 2 OF 2

25100 / 26100-PHX STABILIZERS ▲

DATE  
12-08-23C

SUPERSEDES  
01-23-17B

SECTION  
C200 ▲

25449

## RECOMMENDED DEPARTURE ANGLE



VENCO VENTURO INDUSTRIES LLC  
CINCINNATI, OHIO

RECOMMENDED DEPARTURE ANGLE

REAR MOUNTED OUTRIGGERS

DATE  
08-25-22A

SUPERSEDES  
01-18-17

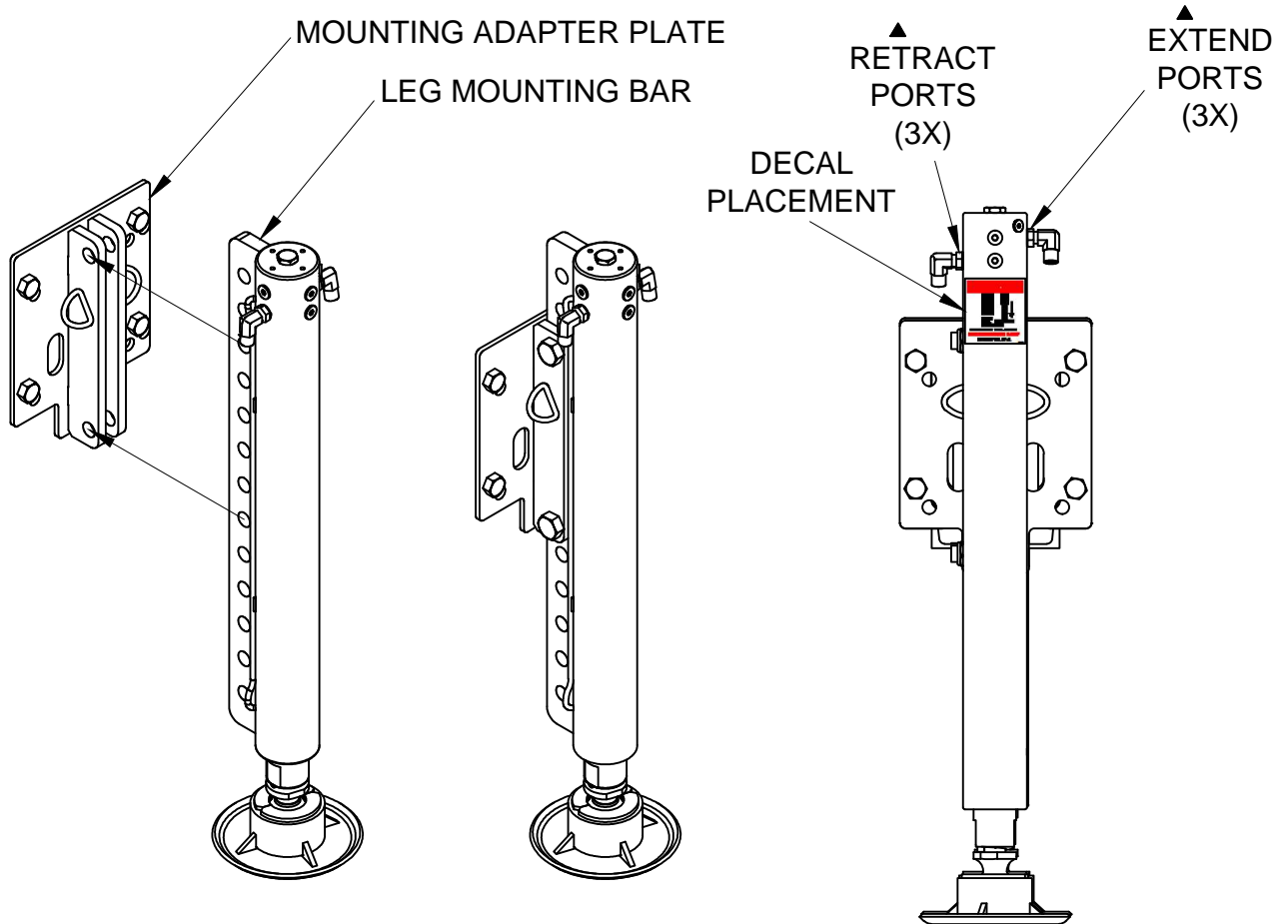
PAGE

-

25485

## MOUNTING THE STABILIZER LEGS - 25500-PHX & 26100-PHX SERIES STABILIZERS

1. Determine the desired vertical mounting position for the stabilizer legs.
2. Use the provided Hardware to attach the Leg Mounting Bar to the Mounting Adapter Plate (between the two bars): ▲  
[4] HEX HEAD CAP SCREW - 3/4-10 x 3", GR. 5, ZINC  
[4] LOCK NUT, NYLON-INSERT FULL-HEIGHT - 3/4-10, GR. 5, ZINC
3. Torque Hex Head Cap Screws to 100 ft-lb.
4. Place 24964 DANGER Decal, [1] on each Leg as shown.



-SL ("SHORT LEG")  
CYLINDER STROKE = 20"  
VERTICAL POSITION ADJUSTABILITY = 14"  
(7 MOUNTING POSITIONS IN 2" INCREMENTS)

-LL ("LONG LEG")  
CYLINDER STROKE = 30"  
VERTICAL POSITION ADJUSTABILITY = 24"  
(12 MOUNTING POSITIONS IN 2" INCREMENTS)



VENCO VENTURO INDUSTRIES LLC  
CINCINNATI, OHIO

### MOUNTING THE LEGS

25500 & 26100 STABILIZERS

DATE  
01-27-25A

SUPERSEDES  
12-14-23

SECTION  
C200

26130

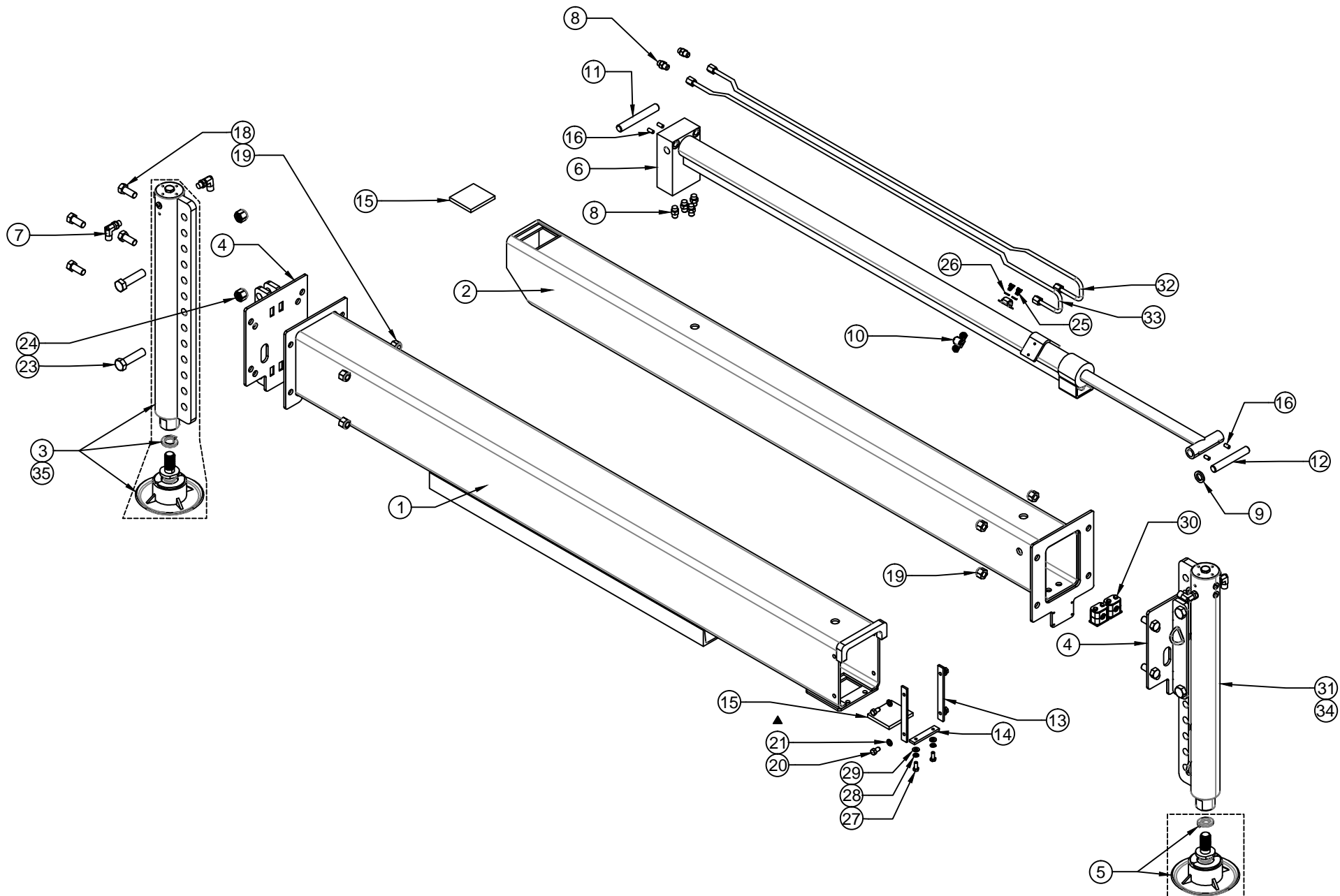
# **SECTION 400**

## **REPLACEMENT PARTS**



VENCO VENTURO INDUSTRIES LLC  
CINCINNATI, OHIO





REFERENCE DRAWING 26129 FOR REPLACEMENT PARTS LIST



VENCO VENTURO INDUSTRIES LLC  
CINCINNATI, OHIO

TITLE  
PARTS BREAKDOWN  
26100-PHX-SL / LL

DATE  
07-02-25C  
SUPERSEDES  
01-24-25B

SECTION  
C400  
26128

# 26100-PHX-SL / -LL PARTS BREAKDOWN

ITEM #	PART #	DESCRIPTION	QTY	
			-SL	-LL
1	26101-PHX	CROSSTUBE WELDED ASSY (PHX)	1	1
2	26103-PHX	PULLOUT WELDED ASSY 4FT (PHX)	1	1
3	26109-SL	HYDRAULIC SHORT LEG; 20" STROKE WITH SWIVEL FOOT	2	-
4	25230	ADAPTER PLATE WELDED ASSY	2	2
5	26115	SWIVEL FOOT ASSY (ONLY); WITH LOCK WASHER	-	-
6	25231	EXTENSION CYLINDER; 48" STROKE	1	1
7	FF6801-0606	FITTING; 06MJ-06MORB 90°	4	4
8	H6400-0606	FITTING; 06MJ-06MORB	6	6
9	12534-1	MACHINERY BUSHING - 3/4" ID X 1-1/4" OD X 10 GA	1	1
10	26111	VIBRATION DAMPENING CLAMP; 3/8"	2	2
11	25051	SHAFT; EXT. BASE-END, PULLOUT	1	1
12	25052	SHAFT; EXT. ROD-END, PULLOUT	1	1
13	25065	NUT BAR; RETAINER & BEARING, CROSSTUBE SIDES	2	2
14	25077	NUT BAR; RETAINER, CROSSTUBE, BOTTOM, U.H.M.W. PAD	1	1
15	25081	UHMW PAD; BLOCK, 3/8 X 3-1/8 X 3-1/2	2	2
16	!SHCS03118063	SET SCREW; 5/16-18 X 5/8 - CUP POINT	4	4
17	-	-	-	-
18	!HHCS06311150-8	HEX HEAD CAP SCREW; 5/8-11 X 1-1/2, GR. 8, ZINC	8	8
19	!LNUT-06311-8	LOCK NUT; 5/8-11, GR. 8, ZINC, NYLON-INSERT	8	8
20	!HHCS03816050	HEX HEAD CAP SCREW; 3/8-16 X 1/2, GR. 5, ZINC	4	4
21	!LWSH-038	LOCK WASHER; 3/8", GR. 5, ZINC	4	4
22	-	-	-	-
23	!HHCS07510300	HEX HEAD CAP SCREW; 3/4-10 X 3, GR. 5, ZINC	4	4
24	!LNUT-07510	LOCK NUT (FULL); 3/4-10, GR. 5, ZINC, NYLON-INSERT	4	4
25	!THCS02520038-SS	TRUSS HEAD CAP SCREW; 1/4-20 X 3/8, STAINLESS	4	4
26	!LWSH-025S	LOCK WASHER; 1/4, GR. 5, STAINLESS	4	4
27	!HHCS03118075S	HEX HEAD CAP SCREW; 5/16-18 X 3/4, STAINLESS	2	2
28	!LWSH-031S	LOCK WASHER; 5/16", STAINLESS	2	2
29	!FWSH-031S	FLAT WASHER; 5/16" X .75 O.D., 304 STAINLESS	2	2
30	26104	VIBRATION DAMPENING HOSE CLAMP; 5/8"	2	2
31	25232	HYDRAULIC SHORT LEG; 20" STROKE (CYLINDER ONLY)	-	-
32	25234-L	TROMBONE TUBE ASSY - LEFT	1	1
33	25234-R	TROMBONE TUBE ASSY - RIGHT	1	1
34	25233	HYDRAULIC LONG LEG; 30" STROKE (CYLINDER ONLY)	-	-
35	26109-LL	HYDRAULIC LONG LEG; 30" STROKE WITH SWIVEL FOOT	-	2
*	24964	DECAL; DANGER, CRUSHING INJURY	2	2
*	25050	VALVE BLOCK, 3-SPOOL	1	1
*	H6400-0808	ADAPTER FITTING; STRAIGHT, 8MJ-8MO	2	2
*	H6400-0608	ADAPTER FITTING; STRAIGHT, 6MJ-8MO	6	6
*	27783	SELECTOR VALVE	1	1
*	27784	BRACKET, SELECTOR VALVE	1	1
*	22765-2	CARTRIDGE VALVE - PILOT OPERATED CHECK (FOR 25232 CYLINDER)	-	-
*	25218	HANDLE, AL001, M8 THD X 150MM	-	-
*	25219	LEVER BOX L100, M8	-	-

REFERENCE DRAWING 26128 FOR REPLACEMENT PARTS DRAWING



VENCO VENTURO INDUSTRIES LLC  
CINCINNATI, OHIO

TITLE

PARTS BREAKDOWN

DATE

07-02-25D

SECTION

C400

26100-PHX-SL / LL

SUPERSEDES

04-24-25C

26129





# VENTURO CRANES LIMITED WARRANTY POLICY

Venturo products are built to last...we guarantee them.

As a purchaser of any new Venturo product covered by warranty, you will receive 1 year of the most complete coverage available...and, at no added cost to you.

## 1-Year Limited Warranty Policy

This limited policy warrants new products of Venturo to be free from defects in material and workmanship for a period of one (1) year from date of original installation. OEM products or accessories purchased by Venturo as part of or offered with our product will carry the OEM manufacturer's respective warranty. Our warranty covers:

- ***Repair or replacement of product***
- ***Labor to repair or replace product***
- ***Freight to return and/or replace product***

We shall not be liable for any contingent liabilities arising out of the improper function of any products. Warranty shall become void if the product is improperly installed, modified, damaged, abused or used for application other than intended use. There is no warranty of merchantability, fitness for a particular purpose, warranty arising from course of dealing or usage of trade, or any other implied or expressed warranty, except as made specifically herein. This warranty supersedes all previous warranties, written or implied.

## Warranty Claims

Venco Venturo Industries LLC will make a good faith effort for prompt correction or other adjustment with respect to any product, which proves to be defective after our inspection and within the warranty period. Before any repairs are attempted or before returning any product, your Venturo Distributor is required to obtain a warranty claim number. This number is necessary for any claim to be considered. To obtain a warranty claim number, Venturo requires the model and serial number. Only authorized Venturo Distributors can perform warranty. For the name and address of your local Venturo Distributor call the **Warranty Claim Department - 513-772-8448**.

**WARNING** - It is the responsibility of the installer to ensure the installation is completed according to the manufacturer's recommendations, ensure the ultimate user understands how to operate product in a safe manner, and understands the need for regular service and maintenance by an authorized Venturo Distributor. No modifications or alterations may be made to any Venturo product without the expressed written consent of Venco Venturo Industries LLC. Installation of any Venturo product must be done by an authorized Venturo Distributor, to the standards of the industry; including maintenance, service and affixing of all instruction, safety and warning decals. Users should be instructed as to the safe operation at time of delivery. Maintenance, service, operation and safety warning decals are available on request from Venco Venturo Industries LLC.

**VENCO VENTURO INDUSTRIES LLC**  
12110 BEST PLACE | CINCINNATI, OHIO 45241  
P: 800-226-2238 | F: 513-326-5427  
[www.venturo.com](http://www.venturo.com)