

ELECTRIC - HYDRAULIC CRANES 4020E (ET16KX-20)



SPECIFICATIONS

Lifting Capacities: 4,000 lbs

Crane Rating: 16,000 ft-lbs

Mounting Space: 13-1/2" x 17-3/8"

Stowed Height: 31.6"

Rope Diameter: 5/16" @ 80'

Line Pull Speed
25 ft/min
(Single-line)
4 ft/min
(Double-line)

Max. Single-line: 2,000 lbs

Max. Double-line: 4,000 lbs

Rotation: 360°
Continuous

Power Supply Requirements:
Power Supply: Electric 12V DC
Requirements: 12v DC Battery

Hydraulic Req: Self-Contained w/ Power Unit

Boom Elevation: -5° to +75°

Controls:
- 12V Electric
- Optional:
Proportional Controls

Hydraulic Power
Elevation/
Rotation/
Extension

Boom Extension: Power:
10' - 16' - 20'

Weight: 1,150 lbs

Minimum Vehicle Class: Class 3 (10,500 lbs GVWR)

Optional:
- Proportional
- Non-Proportional
- Corded
- Corded & Wire-less



The Ventura 4020E is a 16,000 ft-lb electric-hydraulic service crane with a 4,000 lb maximum capacity. This crane allows operators a crane application without the need for a heavy crane service body. A reinforced crane compartment on a standard utility body provides operators the strength they need on a standard service truck.

FEATURES

INDUSTRY LEADING IN ELECTRIC-HYDRAULIC CRANES

POWERFUL DC ELECTRIC WINCH

The ET series winches combine a powerful permanent magnet DC motor with robust sealing with proven 3-stage, all-metal gear train. Permanent grease lubrication means years of trouble-free service.

MANUAL CRANE OVERRIDE

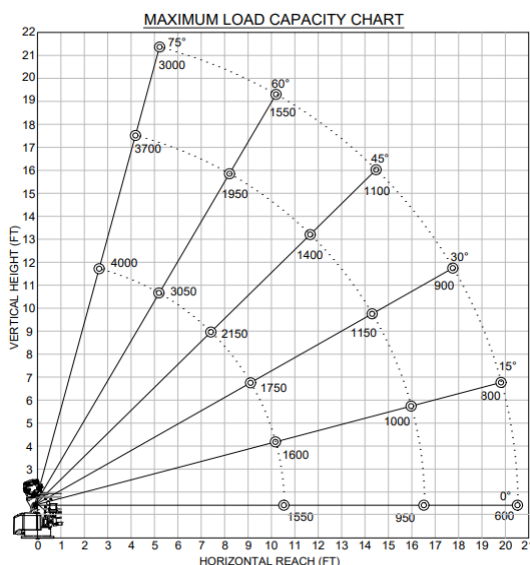
Each ET series crane gives the user the ability to operate and stow the crane if there is power loss through the remote

POWERFUL HYDRAULIC SLEW DRIVE

Driven from high quality durable electric motor

COUNTER-BALANCE VALVE

Counterbalance valving in all cylinders for increase safety and protection during operation



*Venturo Body: VP16 Crane Service Body