

ELECTRIC - HYDRAULIC CRANES

4516E (ET18KX-16)



SPECIFICATIONS

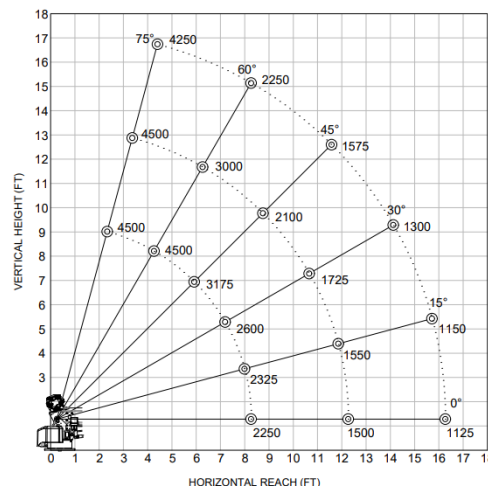
Lifting Capacities:	4,500 lbs
Crane Rating:	18,000 ft-lbs
Mounting Space:	13-1/2" x 17-3/8"
Stowed Height:	29.6"
Rope Diameter:	5/16" @ 80'
Line Pull Speed	25 ft/min (Single-line)
	4 ft/min (Double-line)
Max. Single-line:	2,250 lbs
Max. Double-line:	4,500 lbs
Rotation:	360° Continuous
Power Supply Requirements:	Power Supply: Electric 12V DC Requirements: 12v DC Battery
Hydraulic Req:	Self-Contained w/ Power Unit
Boom Elevation:	-5° to +75°
Controls:	Electric On/Off Functions
Boom Extension:	Power: 8' - 12' Manual: 12' - 16'
Weight:	900 lbs
Minimum Vehicle Class:	Class 3 (10,500 lbs GVWR)
Optional:	- Non-Proportional - Proportional - Coded - Coded & Wireless

The Venturo 4516E is an 18,000 ft-lb electric-hydraulic service crane with a 4,500 lb maximum capacity. This crane gives operators the distance and strength they need for lighter crane service bodies. Large enough to pull heavy equipment, docks or any other loads at a shorter distance with a large capacity, the crane is also small enough for a mid-size GVWR truck.

FEATURES

- **INDUSTRY LEADING IN ELECTRIC-HYDRAULIC CRANES**
- **POWERFUL DC ELECTRIC WINCH**
The ET series winches combine a powerful permanent magnet DC motor with robust sealing with proven 3-stage, all-metal gear train. Permanent grease lubrication means years of trouble-free service.
- **MANUAL CRANE OVERRIDE**
Each ET series crane gives the user the ability to operate and stow the crane if there is power loss through the remote
- **POWERFUL HYDRAULIC SLEW DRIVE**
Driven from high quality durable electric motor
- **COUNTER-BALANCE VALVE**
Counterbalance valving in all cylinders for increase safety and protection during operation

MAXIMUM LOAD CAPACITY CHART



*Venturo Body: VP40 & VP45
Crane Service Body