

# **VENTURO**

## **OWNER'S MANUAL**

# **PARTS & INSTALLATION MANUAL**

---

# **CE6K**

---

Included in this manual:

### **CE6K**

- 2,000 lb Electric Service Crane
- Manual Elevation & Rotation with Band Brake
- 3-5 ft Manual Boom Extension, or
  - 4-7 ft Manual Boom Extension

VENCO VENTURO INDUSTRIES LLC  
12110 BEST PLACE | CINCINNATI, OHIO 45241  
800-226-2238



This manual also available online at [www.venturo.com](http://www.venturo.com).

|               |   |
|---------------|---|
| 7607100A      | DESCRIPTION & SPECIFICATIONS                  |
| 24111         | DIMENSIONS & CAPACITIES, CE6K, 3-5 FT BOOM    |
| 24112         | DIMENSIONS & CAPACITIES, CE6K, 4-7 FT BOOM    |
| 19767         | INSTALLATION DIMENSIONS, BASE MOUNTING        |
| 24113         | WIRE ROPE & HOOK SPECIFICATIONS               |
| 7607150A      | SAFETY  |
| CE-044        | CRANE SAFETY & HAZARDS                        |
| 21353         | DECAL DRAWING & LIST, 1 OF 2                  |
| 21384         | DECAL DRAWING & LIST, 2 OF 2                  |
| 24114         | DECAL DRAWING & LIST, 3 OF 3                  |
| 24119         | OPERATION & MAINTENANCE INSTRUCTIONS          |
| 7607200A      | INSTALLATION                                  |
| 19774         | PIN POSITIONS FOR BOOM ANGLES                 |
| 711105        | CABLE & BATTERY REQUIREMENTS, ELECTRIC CRANES |
| 15660         | BATTERY CABLE & COMPONENT INSTALLATION        |
| 24115         | WIRING DIAGRAM                                |
| 24116         | WIRE ROPE INSTALLATION                        |
| 7607400A      | REPLACEMENT PARTS                             |
| 24117         | REPLACEMENT PARTS DRAWING                     |
| 24118         | REPLACEMENT PARTS LIST                        |
| 19773         | DECAL PLACEMENT                               |
| 28060         | FIELD SERVICE LABEL KIT                       |
| 25431         | USER NOTES                                    |
| 25431         | USER NOTES                                    |
| 12-00073_VNT1 | WARRANTY PAGE                                 |

**SECTION 100**

**DESCRIPTION**

**&**

**SPECIFICATIONS**



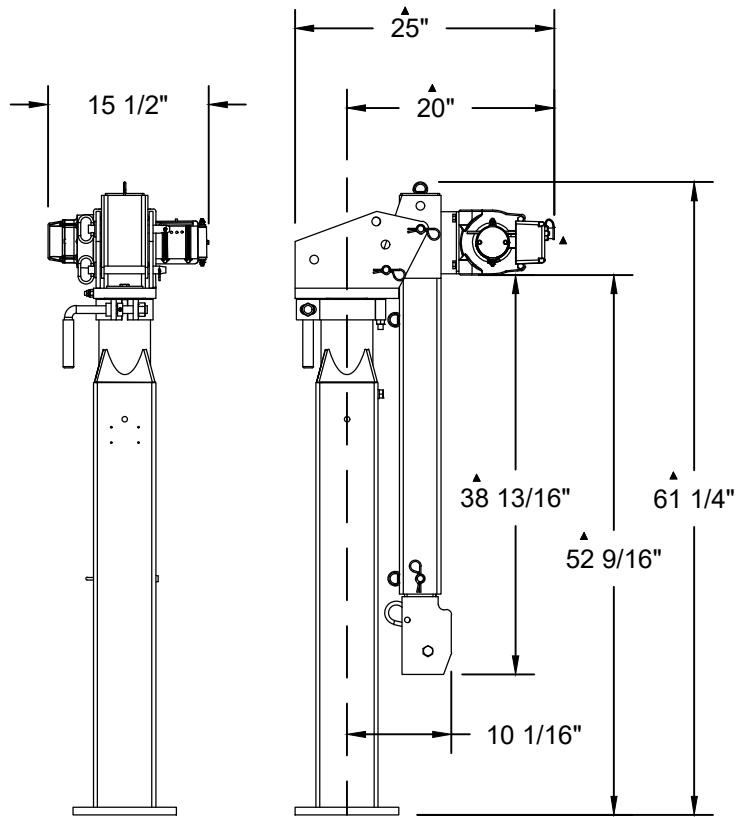
VENCO VENTURO INDUSTRIES LLC  
CINCINNATI, OHIO



# WARNING

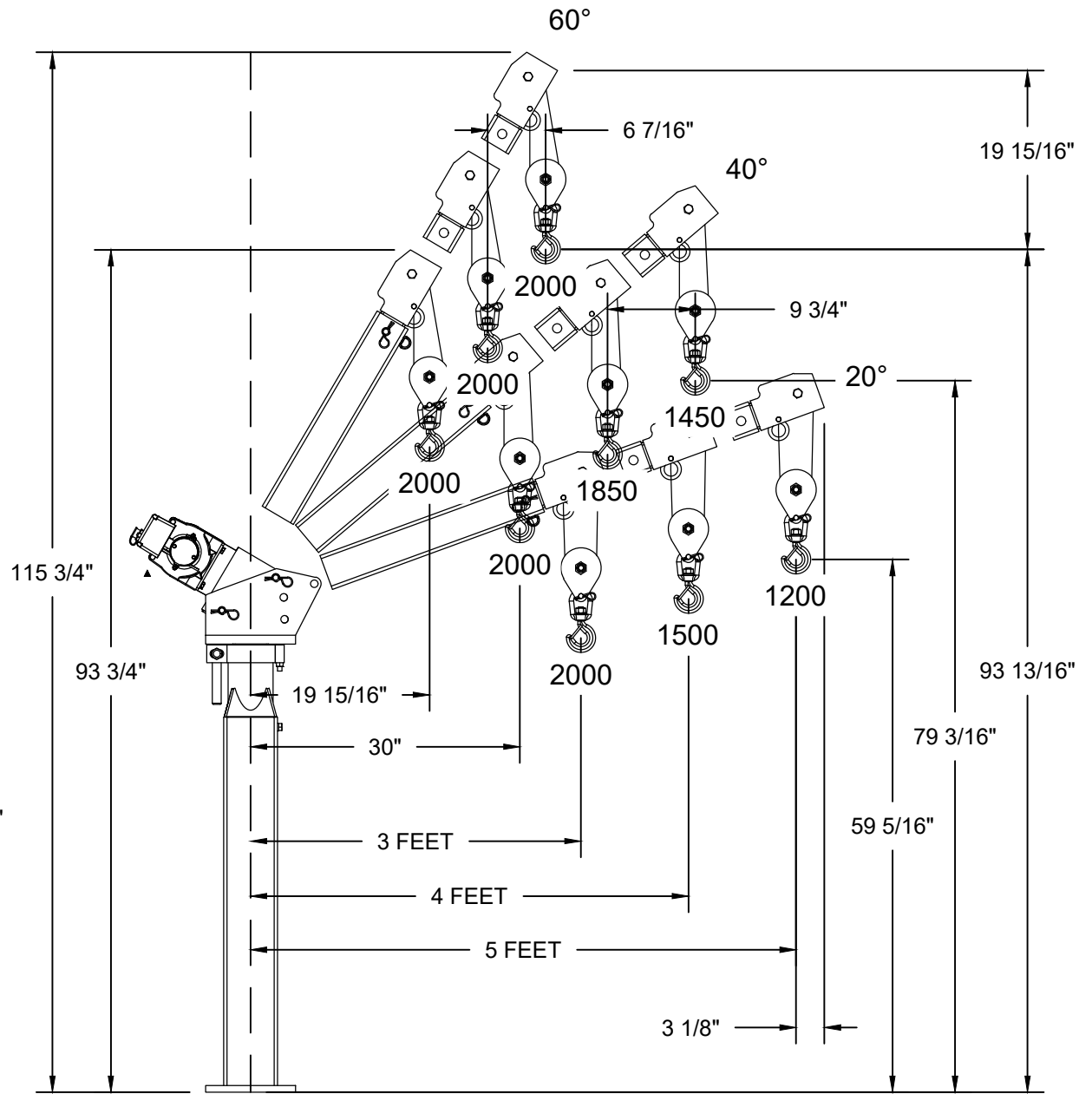
- THESE PRODUCTS ARE NOT PASSENGER LIFTS. THEY ARE NOT DESIGNED OR INTENDED TO BE USED TO LIFT, SUPPORT OR OTHERWISE TRANSPORT PERSONNEL.

USE TWO-PART LINE  
WITH LOAD BLOCK FOR  
LOADS OVER 1000 LBS



REAR VIEW

STOWED VIEW  
RIGHT SIDE



ELEVATED VIEW  
RIGHT SIDE



VENCO VENTURO INDUSTRIES LLC  
CINCINNATI, OHIO

TITLE  
DIMENSIONS & CAPACITIES

CE6K 3'-5' BOOM

DATE  
02-02-26A

SUPERSEDES  
04-12-19

SECTION  
C100

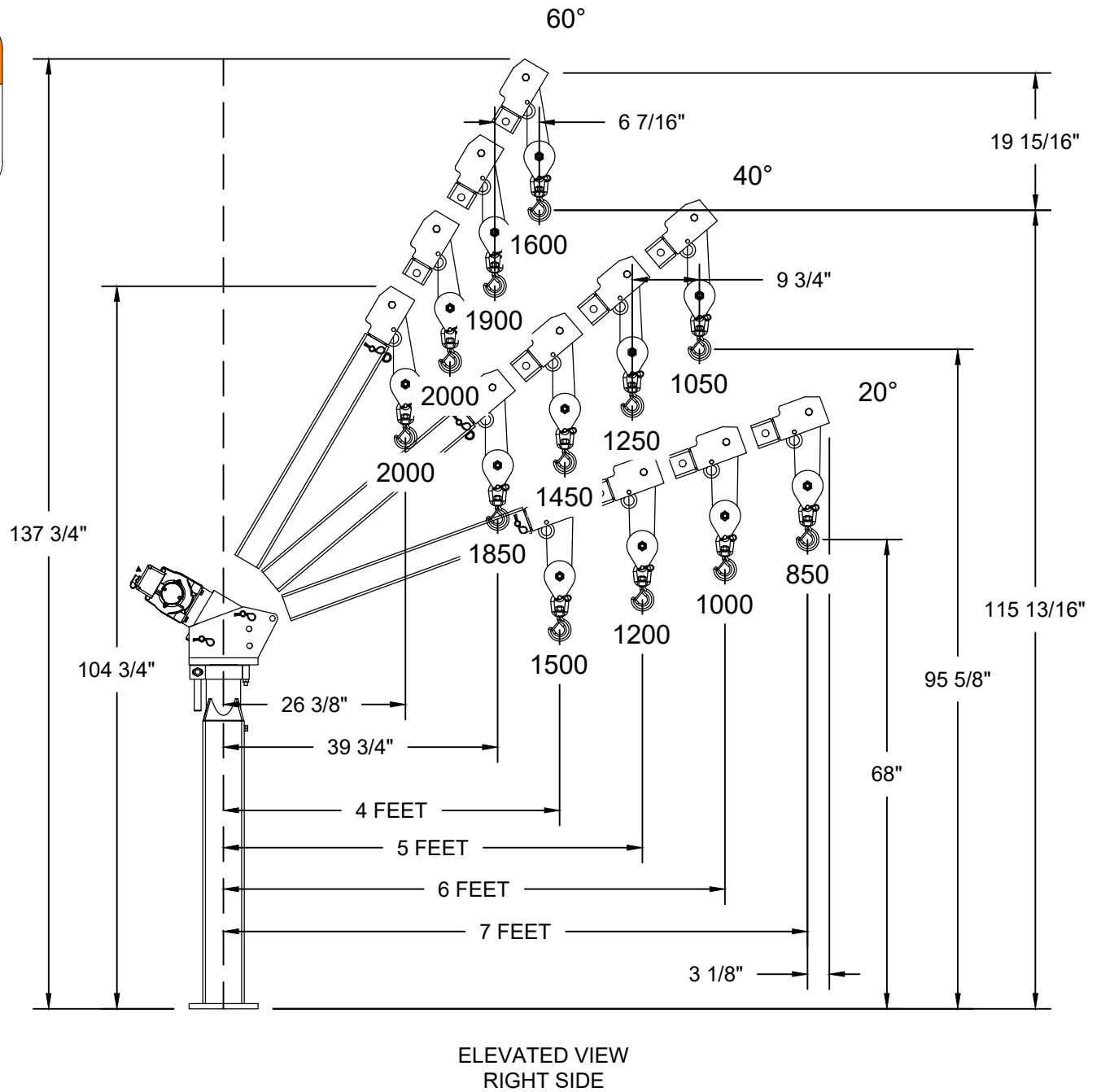
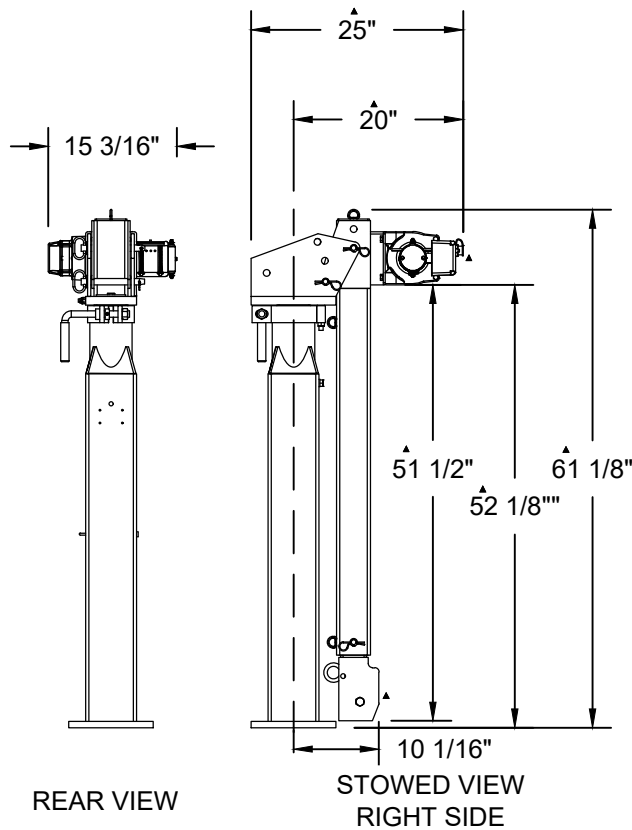
24111



# WARNING

- THESE PRODUCTS ARE NOT PASSENGER LIFTS. THEY ARE NOT DESIGNED OR INTENDED TO BE USED TO LIFT, SUPPORT OR OTHERWISE TRANSPORT PERSONNEL.

USE TWO-PART LINE  
WITH LOAD BLOCK FOR  
LOADS OVER 1000 LBS



VENCO VENTURO INDUSTRIES LLC  
CINCINNATI, OHIO

TITLE  
**DIMENSIONS & CAPACITIES**

CE6K 4'-7' BOOM

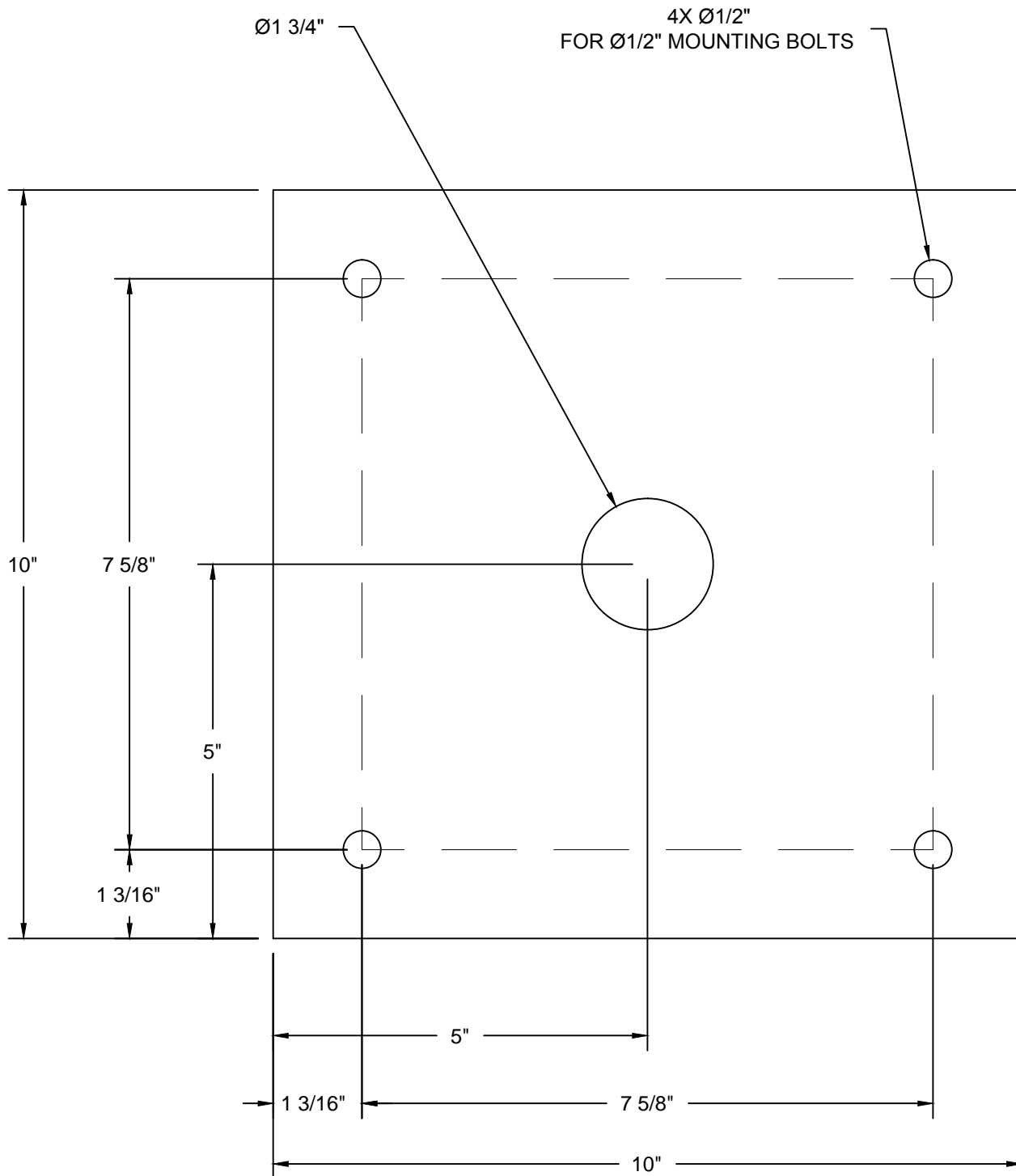
DATE  
02-02-26A

SUPERSEDES  
04-12-19

SECTION  
C100

24112

# BASE MOUNTING TEMPLATE



VENCO VENTURO INDUSTRIES LLC  
CINCINNATI, OHIO

TITLE  
BASE MOUNTING

CE6K

DATE  
04-12-19B

SUPERSEDES  
07-22-99A

SECTION  
C100

19767

# WIRE ROPE & HOOK SPECIFICATIONS

## APPLICATION

24130: WINCH; COMEUP GTD-1200, 1200 LBS MAX

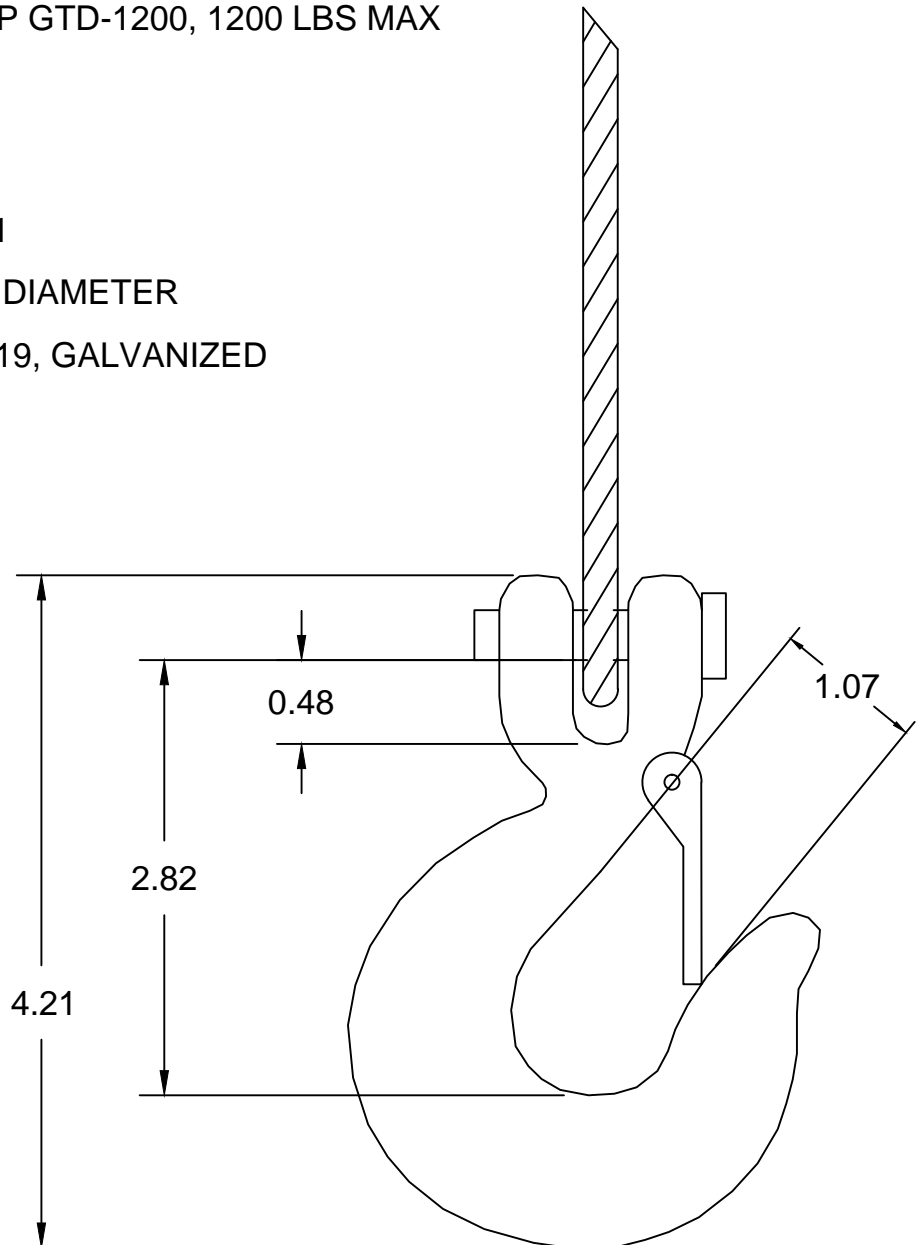
## WIRE ROPE:

PART NUMBER 24131

TYPE 3/16" DIAMETER

A7 x 19, GALVANIZED

LENGTH 60'



## CLEVIS HOOK:

PART NUMBER CE-159



VENCO VENTURO INDUSTRIES LLC  
CINCINNATI, OHIO

TITLE

WIRE ROPE & HOOK SPECS

DATE

04-12-19

SECTION

C100

CE6K

SUPERSEDES

-

24113

# SECTION 150

# SAFETY



VENCO VENTURO INDUSTRIES LLC  
CINCINNATI, OHIO

**CAUTIONS**

1. INSPECT VEHICLE AND CRANE, INCLUDING OPERATION, PRIOR TO USE DAILY.
2. DO NOT USE THIS EQUIPMENT EXCEPT ON SOLID, LEVEL SURFACE WITH CRANE MOUNTED ON FACTORY RECOMMENDED TRUCK.
3. BEFORE OPERATING THE CRANE, REFER TO MAXIMUM LOAD (CAPACITY) CHART ON CRANE FOR OPERATING (LOAD) LIMITATIONS.
4. DO NOT OPERATE, WALK, OR STAND BENEATH BOOM OR A SUSPENDED LOAD.
5. UNPLUG PENDANT (AND OPTIONAL ELECTRIC QUICK DISCONNECT, IF ON MODEL) WHEN NOT IN USE.
6. FOR TRAVEL, BOOM MUST BE TIED DOWN IN THE STOWED POSITION.

**DANGER**

- THIS CRANE IS NOT A PASSENGER LIFT
- IT IS NOT DESIGNED OR INTENDED TO BE USED TO LIFT, SUPPORT, OR OTHERWISE TRANSPORT PERSONNEL.

**YOU MUST NOT OPERATE THIS CRANE UNLESS :**

1. YOU HAVE BEEN TRAINED IN THE SAFE OPERATION OF THIS CRANE, **AND**
2. YOU KNOW AND FOLLOW THE SAFETY AND OPERATION RECOMMENDATIONS CONTAINED IN THE MANUFACTURER'S MANUALS, YOUR EMPLOYER'S WORK RULES, AND APPLICABLE GOVERNMENT REGULATIONS. AN UNTRAINED OPERATOR SUBJECTS THEMSELVES AND OTHERS TO DEATH OR SERIOUS INJURY.

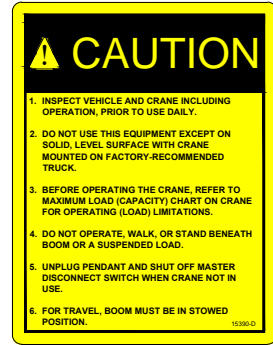
REFERENCE SAFETY MANUAL INST-23233



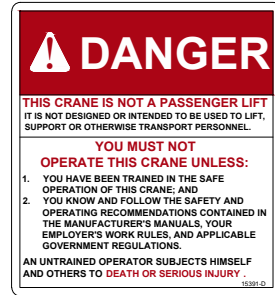
VENCO VENTURO INDUSTRIES LLC  
CINCINNATI, OHIO

|                                |                         |         |
|--------------------------------|-------------------------|---------|
| TITLE                          | DATE                    | SECTION |
| CRANE SAFETY & HZRDS           | 02-20-17E               | C200    |
| ▲<br>CE-/CEV/ESV SERIES CRANES | SUPERSEDES<br>09-08-16D | CE-044  |

DECAL #: 15390  
 DESCRIPTION: CAUTION, INSPECT VEHICLE & CRANE...  
 PURPOSE: TO INFORM THE OPERATOR OF KEY OPERATING REQUIREMENTS.  
 QUANTITY: 1  
 PLACEMENT: REAR COVER OR SIDE OF CRANE



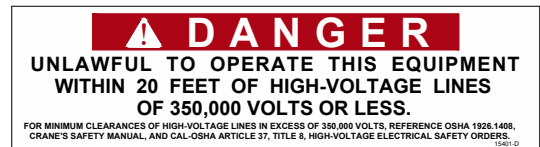
DECAL #: 15391  
 DESCRIPTION: DANGER, NOT A PASSENGER LIFT  
 PURPOSE: TO INFORM OPERATOR NOT TO LIFT, SUPPORT, OR TRANSPORT PERSONNEL, AND TO ENSURE OPERATOR IS ADEQUATELY TRAINED.  
 QUANTITY: 1  
 PLACEMENT: REAR COVER OR SIDE OF CRANE



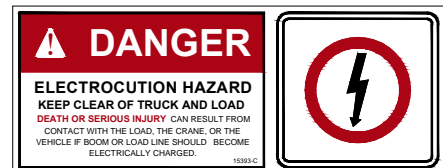
DECAL #: 15392  
 DESCRIPTION: DANGER, ELECTROCUTION HAZARD, MACHINE (CRANE)  
 PURPOSE: TO INFORM OPERATOR THAT MACHINE (CRANE) REPRESENTS AN ELECTROCUTION HAZARD SHOULD IT COME CLOSE TO OR IN CONTACT WITH AN ELECTRICAL VOLTAGE SOURCE.  
 QUANTITY: 1  
 PLACEMENT: REAR COVER OR SIDE OF CRANE



DECAL #: 15401  
 DESCRIPTION: DANGER, UNLAWFUL TO OPERATE  
 PURPOSE: TO INFORM OPERATOR OF PROPER OPERATION IN VICINITY OF ELECTRICAL LINES.  
 QUANTITY: 1  
 PLACEMENT: RING COVER OR SIDE OF CRANE



DECAL #: 15393  
 DESCRIPTION: DANGER, ELECTROCUTION HAZARD, VEHICLE (TRUCK)  
 PURPOSE: WARNS OF DANGER FROM ELECTRICALLY CHARGED VEHICLE, CRANE, OR LOAD.  
 QUANTITY: 4  
 PLACEMENT: EACH SIDE & EACH END OF VEHICLE



VENCO VENTURO INDUSTRIES LLC  
 CINCINNATI, OHIO

TITLE  
 SAFETY DECALS

VENTURO CRANES

DATE  
 04-29-16E

SUPERSEDES  
 10-24-13D

SECTION  
 C150

21353

PART NO.: 15513

DECAL: MASTER DISCONNECT SWITCH

FUNCTION: To inform the operator of location and operation of master disconnect switch.

QUANTITY: 1

PLACEMENT: On master disconnect switch bracket.



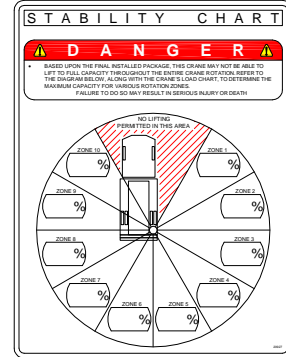
PART NO.: 20927

DECAL: CRANE STABILITY

FUNCTION: To inform the operator of the crane's lifting capacity throughout the entire rotation.

QUANTITY: 1

PLACEMENT: In prominent location, so it is easily seen and readily identifiable.



▲



VENCO VENTURO INDUSTRIES LLC  
CINCINNATI, OHIO

|               |                         |         |
|---------------|-------------------------|---------|
| TITLE         | DATE                    | SECTION |
| SAFETY DECALS | 06-06-14C               | C150    |
| CRANES        | SUPERSEDES<br>04-02-13B | 21384   |

PART NUMBER 19748  
 DESCRIPTION MODEL DECAL  
 FUNCTION TO SHOW THE MODEL OF THE CRANE  
 QUANTITY 2  
 PLACEMENT ONE ON EACH SIDE OF THE BOOM



PART NUMBER 17389-4  
 DESCRIPTION VENTURO LOGO DECAL  
 FUNCTION TO SHOW THE MANUFACTURER OF THE CRANE  
 QUANTITY 2  
 PLACEMENT ONE ON EACH SIDE OF THE BOOM



PART NUMBER 13191-10  
 DESCRIPTION USE LOAD BLOCK DECAL  
 FUNCTION TO SHOW REQUIREMENT OF LOAD BLOCK OVER 1000 LBS  
 QUANTITY 2  
 PLACEMENT ONE ON EACH SIDE OF THE BOOM



PART NUMBER 19625  
 DESCRIPTION BOOM ANGLE DECAL  
 FUNCTION TO SHOW THE OPERATOR THE BOOM ANGLE PIN POSITION  
 QUANTITY 2  
 PLACEMENT ONE ON EACH SIDE OF THE CRANE HOUSING



PART NUMBER 11917-4  
 DESCRIPTION 12V NEGATIVE GROUND DECAL  
 FUNCTION TO SHOW THE OPERATOR THE CRANE NEGATIVE GROUND  
 QUANTITY 1  
 PLACEMENT NEXT TO GROUND BOLT ON THE CRANE HOUSING



PART NUMBER 19689-1  
 DESCRIPTION BOOM CAPACITY DECAL  
 FUNCTION TO SHOW THE OPERATOR THE CORRECT CAPACITIES AT BOOM ANGLE  
 QUANTITY 2  
 PLACEMENT ONE ON EACH SIDE OF THE CRANE MAST

| CAPACITIES (DC) |            |      |      |      |
|-----------------|------------|------|------|------|
| BOOM LENGTH     | BOOM ANGLE |      |      |      |
|                 | 20°        | 40°  | 60°  |      |
| 3 - 5 FT &      | 3          | 2000 | 2000 | 2000 |
|                 | 4          | 1500 | 1850 | 2000 |
|                 | 5          | 1200 | 1450 | 2000 |
| 4 - 7 FT        | 6          | 1000 | 1250 | 1900 |
|                 | 7          | 850  | 1050 | 1600 |

PART NUMBER 15398  
 DESCRIPTION UNPLUG PENDANT DECAL  
 FUNCTION TO INFORM THE OPERATOR UNPLUG PENDANT OPERATING PROCEDURE  
 QUANTITY 1  
 PLACEMENT NEAR THE CRANE PENDANT SOCKET



VENCO VENTURO INDUSTRIES LLC  
 CINCINNATI, OHIO

TITLE  
 DECALS DRAWING & LIST

DATE  
 02-02-26A

SECTION  
 C150

CE6K

SUPERSEDES  
 04-12-19

24114

# OPERATING INSTRUCTIONS

CE6K SERIES CRANES

## **ELECTRIC WINCH**

THE WINCH IS OPERATED BY A CONTROL SWITCH IN A PLUG-IN REMOTE PENDANT. UNPLUG THE PENDANT AND STORE IT IN THE VEHICLE WHEN THE CRANE IS NOT IN USE.

## **TELESCOPING BOOM**

ON CE CRANES THE BOOM CAN BE MANUALLY EXTENDED. THE HOLE IN THE SECONDARY ARM ASSEMBLY SHOULD BE ALIGNED WITH THE HOLE IN THE PRIMARY ARM. INSERT PIN ASSEMBLY. INSERT HAIRPIN COTTER IN THE END OF THE PIN ASSEMBLY.

## **LOAD BLOCK**

ON THE CE6K MODEL CRANES THE LOAD BLOCK MUST BE USED FOR ALL LOADS OVER 1000 LBS.

## **BAND BRAKE**

THE CE6K IS EQUIPPED WITH A BAND BRAKE THAT PROVIDES UNLIMITED ROTATIONAL POSITIONING.

## **ROTATION LOCK**

BEFORE PULLING LOAD MAKE SURE THE BRAKE HANDLE IS TIGHTENED TO KEEP BOOM FROM ROTATING (DO NOT PULL ITEMS AT AN ANGLE. THE BOOM MUST BE PERPENDICULAR TO THE LOAD.)

## **BOOM TIE DOWN**

THE WINCH LINE SHOULD BE USED TO TIE DOWN THE BOOM TO THE MAST OR TRUCK BED WHILE THE CRANE IS NOT IN USE

## **MASTER DISCONNECT SWITCH**

SWITCH TO DISCONNECT POWER TO CRANE WHEN NOT IN USE.

# MAINTENANCE

## **WINCH**

THE WINCH IS PERMANENTLY LUBRICATED. THERE MAY BE GREASE LEAKAGE OUT OF THE WINCH, ESPECIALLY DURING THE FIRST FEW OPERATIONS. THIS IS NORMAL AND IT IS NOT NECESSARY TO GREASE OR OIL ANY PART OF THE WINCH AT ANY TIME.

## **CABLE**

INSPECT WINCH CABLE PERIODICALLY. IF ANY WEAR OR FRAYING EXISTS, REPLACE CABLE AT ONCE (SEE DRAWINGS 24117 & 24118).

## **CRANE SOCKET**

THE CRANE SHOULD BE REMOVED FROM THE SWIVEL SOCKET ONCE A YEAR OR MORE OFTEN IF EXCESSIVE DEBRIS IS PRESENT. DEBRIS SHOULD BE CLEANED OUT FROM AROUND THE FIBER BEARING & WITHIN THE CRANE SOCKET.



VENCO VENTURO INDUSTRIES LLC  
CINCINNATI, OHIO

TITLE

OPERATING INSTRUCTIONS

DATE

04-12-19

SECTION

C150

CE6K

SUPERSEDES

-

24119

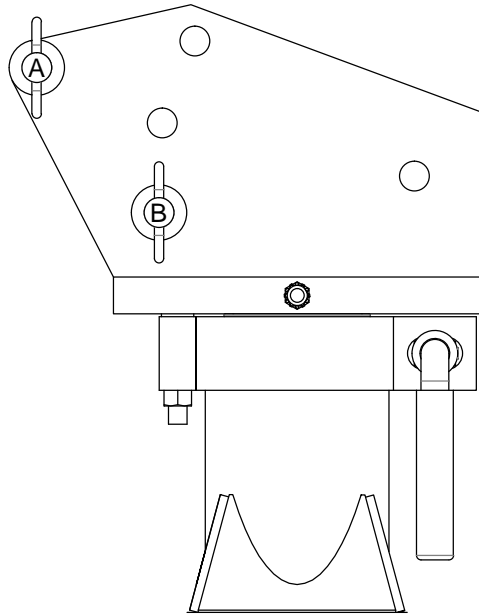
# SECTION 200

# INSTALLATION

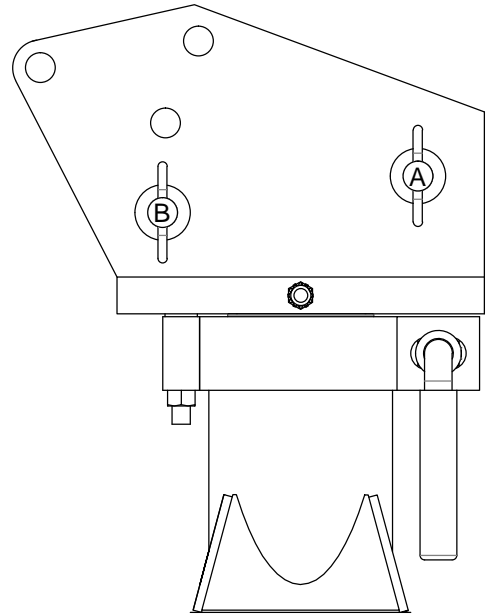


VENCO VENTURO INDUSTRIES LLC  
CINCINNATI, OHIO

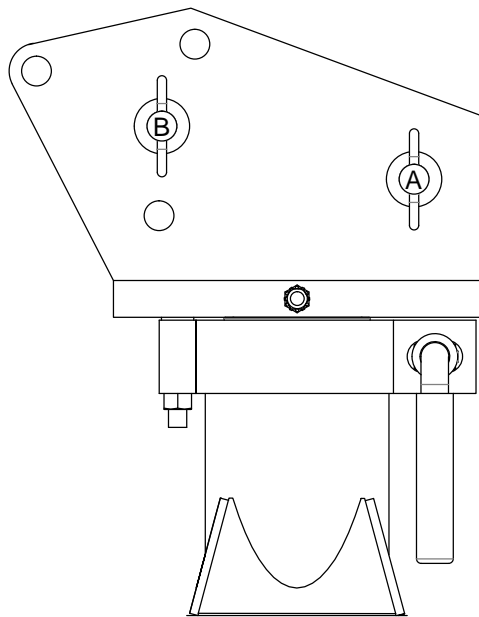
# PIN POSITIONS FOR BOOM ANGLES



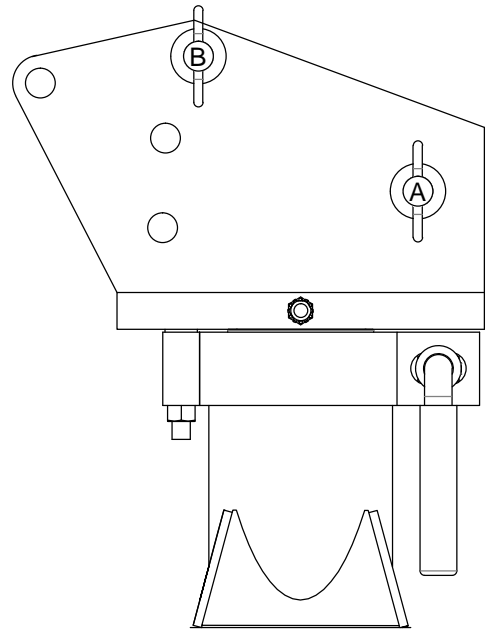
FOLDED POSITION



20° ANGLE



40° ANGLE



60° ANGLE



VENCO VENTURO INDUSTRIES LLC  
CINCINNATI, OHIO

TITLE  
PIN POSITIONS

CE6K

DATE  
04-12-19A

SUPERSEDES  
03-03-99

SECTION  
C200

19774

# !! IMPORTANT !!

## ADEQUATE WIRING IMPERATIVE FOR PROPER OPERATION

1. PROPER GROUND PATH - SEE DWG 15660
2. CURRENT DRAW IS SEVERAL HUNDRED AMPERES - ADEQUATE WIRE SIZE AND BATTERY CAPACITY IS ABSOLUTELY ESSENTIAL (SEE CHART BELOW).

### ▲ MINIMUM WIRE GAUGE AND AUXILIARY BATTERY SIZE

| MODEL  | TOTAL LENGTH OF CABLE (FT) *                         |       |       |       |       |                 |       |       | ▲ 12 VOLT AUXILIARY BATTERY REQUIREMENTS |              |
|--|--|-------|-------|-------|-------|-----------------|-------|-------|--|--------------|
|  | 0-20   | 21-25 | 26-30 | 31-40 | 41-50 | 51-60           | 61-70 | 71-80 | CCA (A) **                               | RC (MIN) *** |
| ▲ CE1500<br>CE6K<br>CT2000<br>CT2003/4/5<br>DT7K                           | #4   | #4    | #2    | #2    | #1    | #0              | #0    | #00   | 350                                      | 100          |
| ET5500MPB<br>ET5500R<br>ET6KMPB<br>ET6KR<br>ET6K<br>ET8K<br>ET10K<br>ET12K | #2   | #2    | #1    | #0    | #00   | NOT RECOMMENDED |       |       | 450                                      | 100          |
| ET8KX<br>ET10KX<br>ET12KX<br>▲ ET12KXP                                     | #2   | #2    | #1    | #0    | #00   | NOT RECOMMENDED |       |       | 550                                      | 150          |
| ET18K(X)<br>ET25K(X)<br>ET30KX<br>ET36KX                                   | SEE DRAWING 15660 FOR CABLE AND BATTERY REQUIREMENTS |       |       |       |       |                 |       |       |  |              |

\* INCLUDES GROUND CABLE

\*\* CCA = COLD CRANKING AMPS AT 0° (F).

\*\*\* RC = RESERVE CAPACITY IN MINUTES AT 25 AMPS AND 80° (F).  
THE RC RATING IS A MEASURE OF THE PERIOD OF TIME THE BATTERY CAN SUPPLY A GIVEN CURRENT WITHOUT RECHARGING.



VENCO VENTURO INDUSTRIES LLC  
CINCINNATI, OHIO

TITLE  
CABLE & BATTERY

DATE  
07-30-18X

SECTION  
C200

ELECTRIC CRANES

SUPERSEDES  
09-27-17W

**711105**

**RECOMMENDED CIRCUIT BREAKER TABLE**

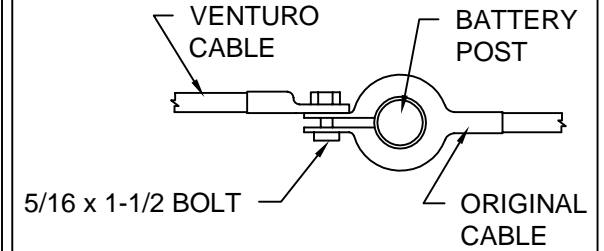
| CRANE         | DESCRIPTION         | PART NO.  |
|---------------|---------------------|-----------|
| CT310KX       | 250 AMP, MAN RESET  | 22946-250 |
| DT7           | 250 AMP, MAN RESET  | 22946-250 |
| CE-1500-FB    | 150 AMP, MAN RESET  | 22946-150 |
| CE6K          | 150 AMP, MAN RESET  | 22946-150 |
| CT200X        | 250 AMP, MAN RESET  | 22946-250 |
| ET6K          | 250 AMP, MAN RESET  | 22946-250 |
| ET8/12K(X)    | 250 AMP, MAN RESET  | 22946-250 |
| ET12KXP       | 300 AMP, MAN RESET  | 22946-300 |
| ET16/18KX-16' | 250 AMP, MAN RESET  | 22946-250 |
| ET16/18KX-20' | 300 AMP, MAN RESET  | 22946-300 |
| ET25/30KX     | 300 AMP, AUTO RESET | 22946-300 |
| ET36KX        | 300 AMP, AUTO RESET | 22946-300 |

**BATTERY REQUIREMENTS**

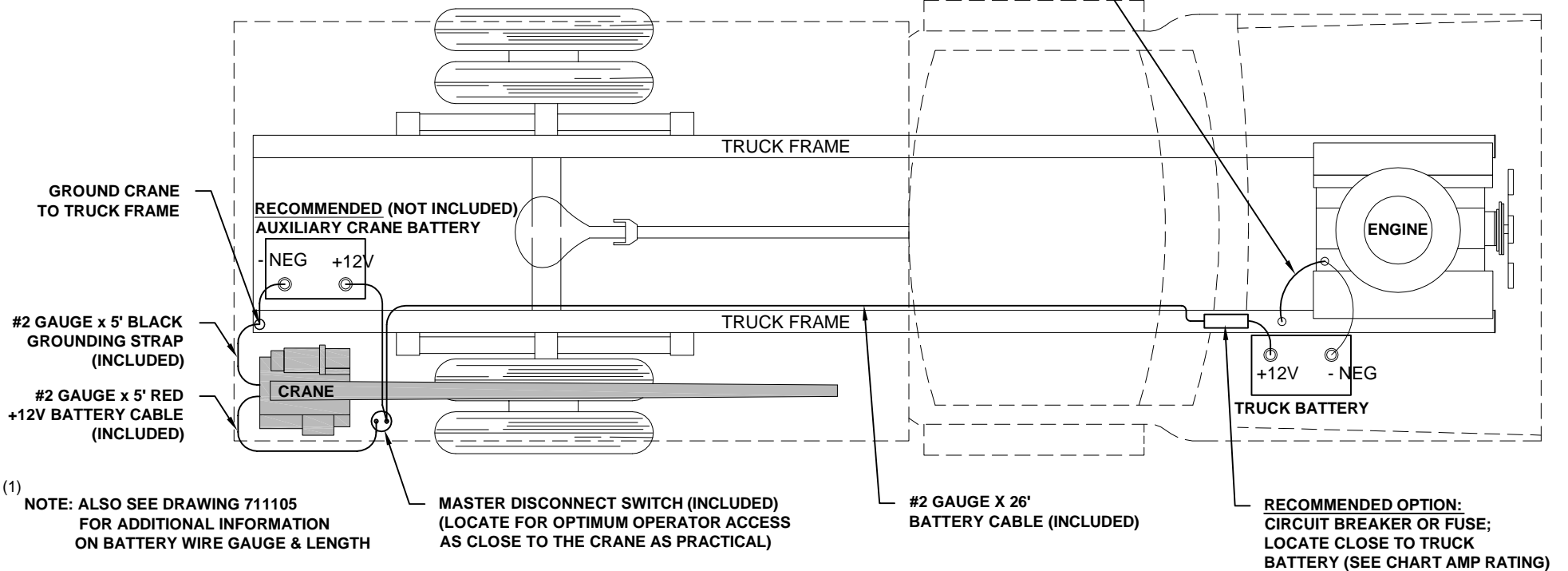
- 12 VOLT VEHICLE BATTERY REQUIREMENTS
  - 625 COLD CRANKING AMPS (AT 0° F)
  - 160 MINUTES RESERVE CAPACITY
  - 102 PLATES, 105 AMP-HR
- (1) 12 VOLT AUXILIARY BATTERY REQUIREMENTS
  - SEE MINIMUM WIRE GAUGE AND BATTERY SIZE

**NOTE: OPERATING WITH THE VEHICLE BATTERY 'ONLY' IS PERMISSIBLE, BUT NOT RECOMMENDED.**

**RECOMMENDED BATTERY TERMINAL ATTACHMENT**



**INSTALL #2 GAUGE GROUND STRAP FROM ENGINE TO TRUCK FRAME (REQUIRED IF NEGATIVE FROM BATTERY IS CONNECTED TO ENGINE)**



VENCO VENTURO INDUSTRIES LLC  
CINCINNATI, OHIO

TITLE

**BATTERY CABLE & COMPONENT INSTALL**

**ET CRANES**

DATE

09-03-20M

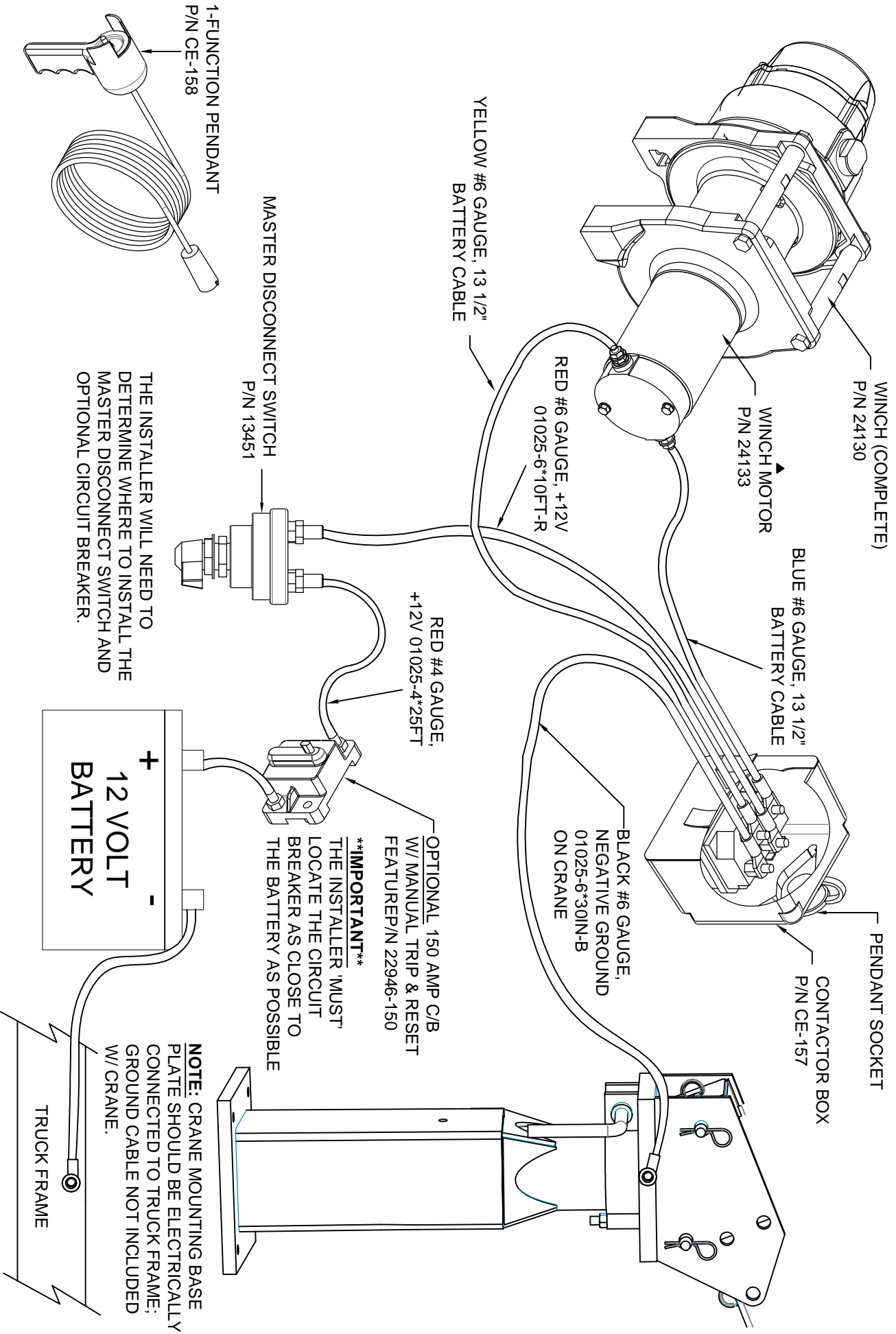
SUPSEDES

07-30-18L

SECTION

**C200**

**15660**



THE INSTALLER WILL NEED TO DETERMINE WHERE TO INSTALL THE MASTER DISCONNECT SWITCH AND OPTIONAL CIRCUIT BREAKER.

**\*\*IMPORTANT\*\***  
THE INSTALLER 'MUST' LOCATE THE CIRCUIT BREAKER AS CLOSE TO THE BATTERY AS POSSIBLE

OPTIONAL 150 AMP C/B W/ MANUAL TRIP & RESET FEATURE P/N 22946-150

**NOTE:** CRANE MOUNTING BASE PLATE SHOULD BE ELECTRICALLY CONNECTED TO TRUCK FRAME; GROUND CABLE NOT INCLUDED W/ CRANE.



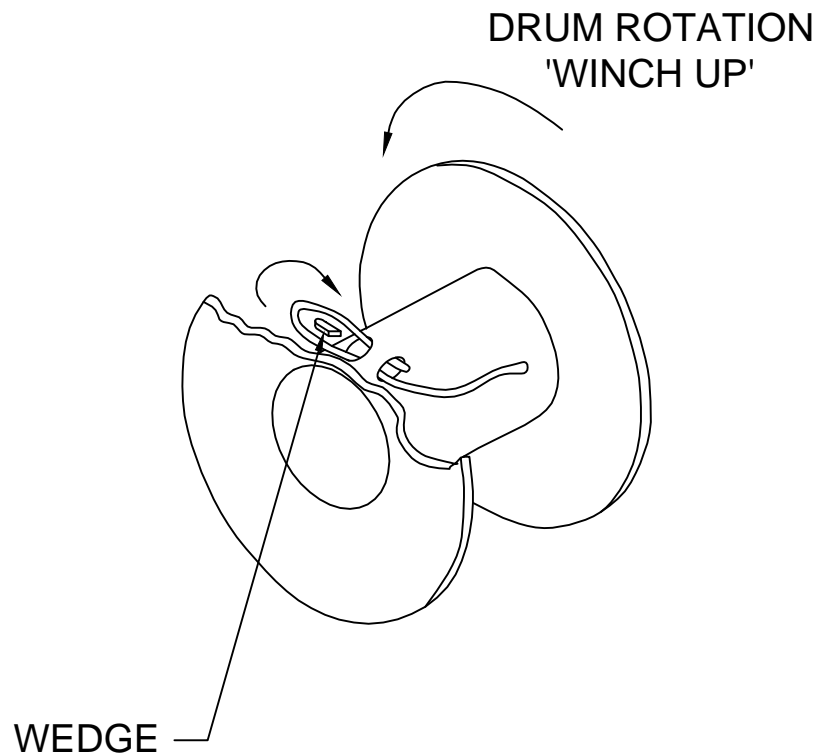
VENCO VENTURO INDUSTRIES LLC  
CINCINNATI, OHIO

|                |                         |         |
|----------------|-------------------------|---------|
| TITLE          | DATE                    | SECTION |
| WIRING DIAGRAM | 06-24-21B               | C200    |
| CE6K           | SUPERSEDES<br>12-31-19A | 24115   |

# WIRE ROPE INSTALLATION

## WINCH LINE (WIRE ROPE) REPLACEMENT

1. REMOVE THE WEDGE FROM THE OLD WINCH LINE FOR USE WITH THE NEW LINE.
2. REMOVE THE OLD WINCH LINE AND CLEAN THE WINCH IF NEEDED.
3. UNROLL THE NEW WINCH LINE TO PREVENT KINKING.
4. INSERT THE NEW LINE THROUGH THE SLOT IN THE DRUM.
5. FORM A LOOP AND INSERT THE END OF THE LINE INTO THE SLOT.
  - 5.1. BE SURE THE "LIVE", OR LOAD CARRYING, END OF THE LINE IS AGAINST THE DRUM FLANGE.
  - 5.2. BE SURE THE END OF THE ROPE EXTENDS OUT OF THE SLOT.
6. INSERT THE WEDGE INTO THE LOOP.
  - 6.1. SEAT THE WEDGE INTO THE SLOT.
7. TURN THE CRANE ON.
8. WIND THE LINE ONTO THE DRUM BY PRESSING THE WINCH UP SWITCH.
  - 8.1. MAINTAIN TENSION ON THE LINE AT ALL TIMES.
  - 8.2. WIND THE LINE EVENLY ONTO THE DRUM.



VENCO VENTURO INDUSTRIES LLC  
CINCINNATI, OHIO

TITLE  
WIRE ROPE INSTALLATION

DATE  
04-12-19

SECTION  
C200

CE6K

SUPERSEDES  
-

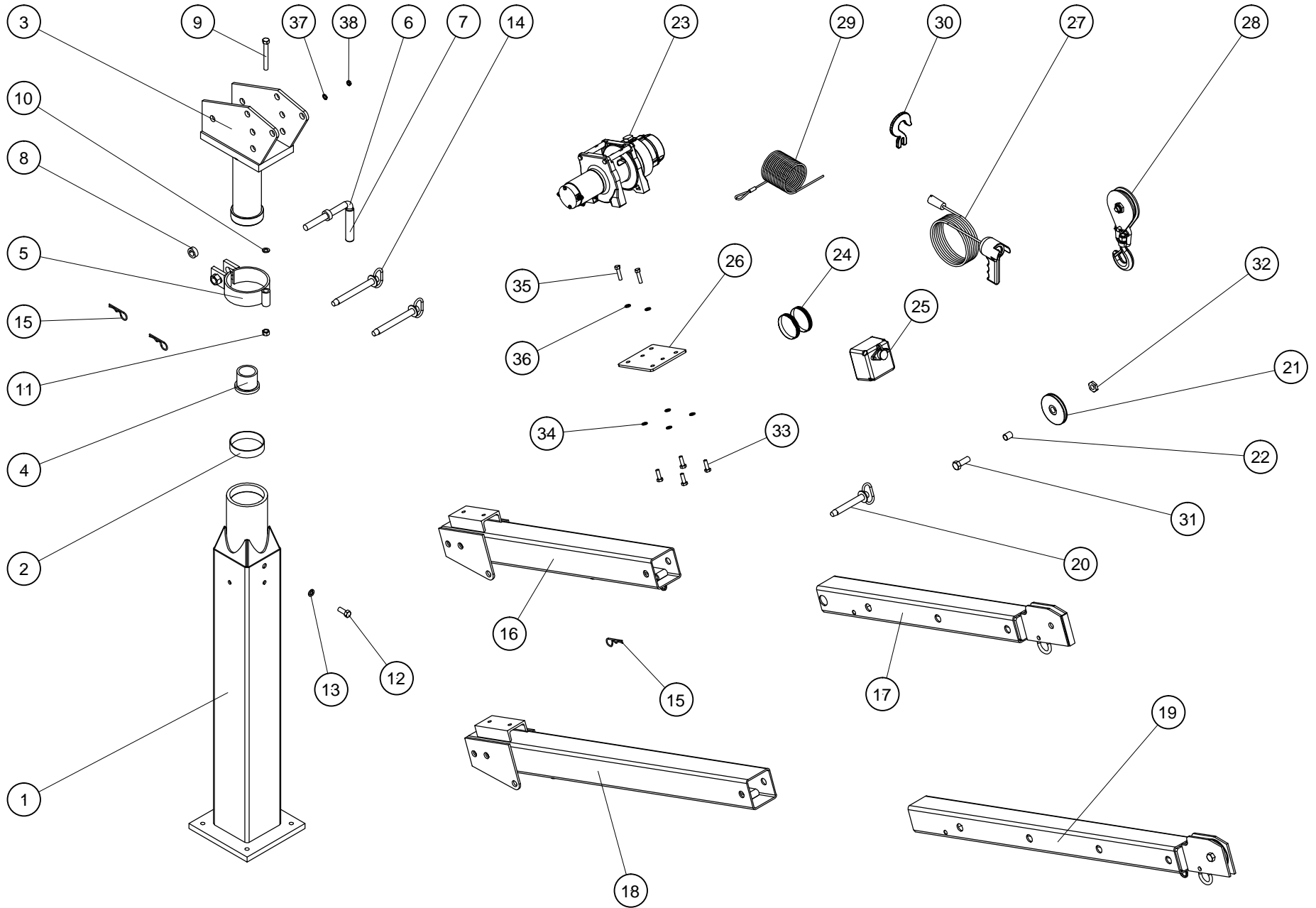
24116

# SECTION 400

# REPLACEMENT PARTS



VENCO VENTURO INDUSTRIES LLC  
CINCINNATI, OHIO



VENCO VENTURO INDUSTRIES LLC  
CINCINNATI, OHIO

TITLE  
REPLACEMENT PARTS, EXPLODED VIEW  
CE6K

DATE  
04-12-19  
SUPERSEDES  
-

SECTION  
C400  
24117

**24118 REPLACEMENT PARTS BILL OF MATERIALS**

| #  | DESCRIPTION                                | QTY | PART NUMBER     |
|----|--|-----|-----------------|
| 1  | MAST WELDED ASSEMBLY                       | 1   | 19606           |
| 2  | SWIVEL FIBER BEARING                       | 1   | 20179           |
| 3  | HOUSING WELDED ASSEMBLY                    | 1   | 19617           |
| 4  | BRONZE FLANGE BEARING                      | 1   | 18575           |
| 5  | BAND BRAKE WELDED ASSEMBLY                 | 1   | 19653           |
| 6  | BRAKE HANDLE                               | 1   | 19652           |
| 7  | RUBBER GRIP                                | 1   | 16-00064        |
| 8  | SET COLLAR                                 | 1   | 00210           |
| 9  | HEX HEAD CAP SCREW; 1/2-13 X 4", GR. 5     | 1   | !HHCS05013400   |
| 10 | BUSHING; 1/2" ID, 7/8" OD, 14GA            | 1   | 12534-4         |
| 11 | LOCK NUT; 1/2-13, NYLON, GR. 5             | 1   | !LNUT-05013     |
| 12 | HEX HEAD CAP SCREW; 1/2-13 X 1 1/4", GR. 5 | 1   | !HHCS05013125-5 |
| 13 | LOCK WASHER; 1/2", GR. 5                   | 1   | !LWSH-050       |
| 14 | PIN & LANYARD ASSEMBLY                     | 2   | 23042-C-14-14   |
| 15 | HAIRPIN COTTER                             | 3   | 21-07           |
| 16 | PRIMARY BOOM, 3'-5'                        | 1   | 19626           |
| 17 | SECONDARY BOOM, 3'-5'                      | 1   | 19636           |
| 18 | PRIMARY BOOM, 4'-7'                        | 1   | 19672           |
| 19 | SECONDARY BOOM, 4'-7'                      | 1   | 19676           |
| 20 | PIN & LANYARD ASSEMBLY                     | 1   | 23042-B-14-14   |
| 21 | BOOM SHEAVE                                | 1   | 19646           |
| 22 | SHEAVE BUSHING                             | 1   | 13168-2         |
| 23 | COMEUP WINCH GTD-1200                      | 1   | 24130           |
| 24 | HOSE CLAMPS, WINCH                         | 2   | CE-154          |

| #   | DESCRIPTION                                  | QTY | PART NUMBER        |
|-----|--|-----|--------------------|
| 25  | CONTACTOR BOX ASSEMBLY, WINCH                | 1   | CE-157             |
| 25* | CONTACTOR (NO ASS'Y, REPLACEMENT PARTS ONLY) | 1   | CE-169             |
| 26  | WINCH MOUNTING PLATE                         | 1   | 19668              |
| 27  | PENDANT REMOTE, WINCH                        | 1   | CE-158             |
| 28  | SWIVEL LOAD BLOCK                            | 1   | 19678              |
| 29  | WIRE ROPE, WINCH                             | 1   | 24131              |
| 30  | CLEVIS HOOK, WINCH                           | 1   | CE-159             |
| 31  | HEX HEAD CAP SCREW; 5/8-11 X 1 3/4", GR. 5   | 1   | !HHCS06311175      |
| 32  | JAM NUT; 5/8-11. NYLON, GR. 5                | 1   | !JNUT-06311N       |
| 33  | HEX HEAD CAP SCREW; M10-1.50 X 30MM, 8.8     | 4   | !HHCSM10150030-8.8 |
| 34  | LOCK WASHER; M10, GR. 8.8                    | 4   | !LWSHM10-8.8       |
| 35  | HEX HEAD CAP SCREW; 3/8-16 X 1 1/2", GR. 8   | 2   | !HHCS03816150-8    |
| 36  | LOCK WASHER; 3/8", GR. 5                     | 2   | !LWSH-038          |
| 37  | LOCK WASHER; 3/8", EXTERNAL STAR, SS         | 1   | !LWSH-038-STAR-SS  |
| 38  | JAM NUT; 3/8-16, GR. 5                       | 1   | !JNUT-03816        |
| 41  |  |     |                    |
| 42  |  |     |                    |
| 43  |  |     |                    |
| 44  |  |     |                    |
| 45  |  |     |                    |
| 46  |  |     |                    |
| 47  |  |     |                    |
| 48  |  |     |                    |
| 49  |  |     |                    |

**\* REPLACEMENT PART INFORMATION ONLY, CONTACTOR INCLUDED IN CE-157 CONTACTOR ASSEMBLY**



VENCO VENTURO INDUSTRIES LLC  
CINCINNATI, OHIO

TITLE  
**REPLACEMENT PARTS LIST**

CE6K

DATE  
**01-20-23A**

SUPERSEDES  
**04-12-19**

SECTION  
**C400**

**24118**



| CE6K<br>FIELD SERVICE LABEL KITS<br>BILLS OF MATERIALS | 19603 | 19603-1 | 19603=<br>CE6K-DC<br>19603-1=<br>CE6K-AC |
|--|-------|---------|--|
| DESCRIPTION  | QTY   |         | PART #                                   |
| DECAL; VENTURO LOGO, SMALL                             | 2     | 2       | 17389-4                                  |
| DECAL; MODEL NAME, CE6K                                | 2     | 2       | 19748                                    |
| DECAL; BOOM CAPACITIES, CE6K-DC                        | 2     | -       | 19689-1                                  |
| DECAL; BOOM CAPACITIES, CE6K-AC                        | -     | 2       | 19689-2                                  |
| DECAL; BOOM ANGLES, CE6K                               | 2     | 2       | 19625                                    |
| DECAL; USE LOAD BLOCK, LOADS > 1000 LBS                | 2     | -       | 13191-10                                 |
| DECAL; USE LOAD BLOCK, LOADS > 750 LBS                 | -     | 2       | 13191-7                                  |
| DECAL; VOLTAGE, 12V NEGATIVE GROUND                    | 1     | 1       | 11917-4                                  |
| KIT; ACCIDENT PREVENTION SIGNS                         | 1     | 1       | 15397                                    |
| IDWG; DECAL PLACEMENT, CE6K                            | 1     | 1       | 19773                                    |
| IDWG; FIELD SERVICE LABEL KIT, CE6K                    | 1     | 1       | 28060                                    |
| SAFETY MANUAL, VENTURO CRANES                          | 1     | 1       | INST-23233                               |
| SERIAL # RANGE 55125 - CURRENT                         |       |         |  |



VENCO VENTURO INDUSTRIES LLC  
CINCINNATI, OHIO

TITLE  
FIELD SERVICE LABEL KITS

DATE  
03-13-23B

SECTION  
C400

CE6K

SUPERSEDES  
05-12-16A

28060









## VENTURO CRANES LIMITED WARRANTY POLICY

Venturo products are built to last...we guarantee them.

As a purchaser of any new Venturo product covered by warranty, you will receive 1 year of the most complete coverage available...and, at no added cost to you.

### 1-Year Limited Warranty Policy

This limited policy warrants new products of Venturo to be free from defects in material and workmanship for a period of one (1) year from date of original installation. OEM products or accessories purchased by Venturo as part of or offered with our product will carry the OEM manufacturer's respective warranty. Our warranty covers:

- ***Repair or replacement of product***
- ***Labor to repair or replace product***
- ***Freight to return and/or replace product***

We shall not be liable for any contingent liabilities arising out of the improper function of any products. Warranty shall become void if the product is improperly installed, modified, damaged, abused or used for application other than intended use. There is no warranty of merchantability, fitness for a particular purpose, warranty arising from course of dealing or usage of trade, or any other implied or expressed warranty, except as made specifically herein. This warranty supersedes all previous warranties, written or implied.

### Warranty Claims

Venco Venturo Industries LLC will make a good faith effort for prompt correction or other adjustment with respect to any product, which proves to be defective after our inspection and within the warranty period. Before any repairs are attempted or before returning any product, your Venturo Distributor is required to obtain a warranty claim number. This number is necessary for any claim to be considered. To obtain a warranty claim number, Venturo requires the model and serial number. Only authorized Venturo Distributors can perform warranty. For the name and address of your local Venturo Distributor call the **Warranty Claim Department - 513-772-8448**.

**WARNING** - It is the responsibility of the installer to ensure the installation is completed according to the manufacturer's recommendations, ensure the ultimate user understands how to operate product in a safe manner, and understands the need for regular service and maintenance by an authorized Venturo Distributor. No modifications or alterations may be made to any Venturo product without the expressed written consent of Venco Venturo Industries LLC. Installation of any Venturo product must be done by an authorized Venturo Distributor, to the standards of the industry; including maintenance, service and affixing of all instruction, safety and warning decals. Users should be instructed as to the safe operation at time of delivery. Maintenance, service, operation and safety warning decals are available on request from Venco Venturo Industries LLC.

**VENCO VENTURO INDUSTRIES LLC**  
12110 BEST PLACE | CINCINNATI, OHIO 45241  
P: 800-226-2238 | F: 513-326-5427  
[www.venturo.com](http://www.venturo.com)