

# **VENTURO**

## **OWNER'S MANUAL**

INST-26155

*25500-PHE(-LC)*

# **PARTS & INSTALLATION MANUAL**

---

# **25500-PHE (-LC)**

---

Included in this manual:

### **25500-PHE(-LC)**

- Stabilizer with Manual Pullout and Hydraulic Legs
- Available in “Less Crosstube” (-LC) configuration

VENCO VENTURO INDUSTRIES LLC  
12110 BEST PLACE | CINCINNATI, OHIO 45241  
800-226-2238



This manual also available online at [www.venturo.com](http://www.venturo.com).

# 25500-PHE(-LC)

INST-26155 - 3/13/2026 (Rev: NEW2)

7607200A	SECTION 200: INSTALLATION
25480	INSTALLATION GUIDELINES
25481-1	ISOMETRIC VIEW - 25500-PH
26127-1	OVERALL DIMENSIONS - 25500-PH-SL
26132-1	OVERALL DIMENSIONS - 25500-PH-LL
25484-3	RECOMMENDED MOUNTING TO TRUCK FRAME
25467-1	SMALL PARTS IMAGE - 25500-PH
25447-1	SELECTOR VALVE OVERVIEW
25472-1	HYDRAULIC MAPPING - 1 OF 3
25473-1	HYDRAULIC MAPPING - 2 OF 3
25474-1	HYDRAULIC MAPPING - 3 OF 3
15660-1	BATTERY CABLES & COMPONENTS
25485	RECOMMENDED DEPARTURE ANGLE
26130	MOUNTING THE LEGS
25422-2	WHEEL AXLE OVERVIEW
25423-2	WHEEL AXLE WELDING; LCT ASSEMBLY - 1 OF 6
25424-2	WHEEL AXLE WELDING;LCT ASSEMBLY - 2 OF 6
25468-1	LCT ASSEMBLY - 3 OF 6
25469-1	LCT ASSEMBLY - 4 OF 6
25470-1	LCT ASSEMBLY - 5 OF 6
25471-1	LCT ASSEMBLY - 6 OF 6
7607400A	SECTION 400: REPLACEMENT PARTS
25462-1	25500-PH REPLACEMENT PARTS DWG
25461-1	25500-PH REPLACEMENT PARTS LIST
25464-1	PULLOUT REPLACEMENT PARTS DWG
25463-1	PULLOUT REPLACEMENT PARTS DWG LIST
25465-2	19401 H.P.U. REPLACEMENT PARTS LIST
25466-2	19401 H.P.U. REPLACEMENT PARTS DWG
25476-2	25477 H.P.U. REPLACEMENT PARTS LIST
25475-2	25477 H.P.U. REPLACEMENT PARTS DWG
25216	REPLACEMENT PARTS- SPOOL VALVES
12-00073_VNT1	WARRANTY PAGE



# SECTION 200

# INSTALLATION



VENCO VENTURO INDUSTRIES LLC  
CINCINNATI, OHIO

## STABILIZER INSTALLATION GUIDELINES

Read instructions completely prior to starting installation. If this unit is to be installed on a Venturo crane body, continue to the stabilizer assembly section of this manual.

Prior to mounting the stabilizer crosstube, orient the stabilizer so the longer pullout is on the crane side of the truck.

### REAR MOUNTED

Crosstube should be centered at the rear of the truck and tied into the truck frame, body longills, and crane support. Installer is responsible for proper mounting brackets and hardware that will be needed during this process. If unit is to be mounted on a service body, do not attach crosstube to body sheet metal unless otherwise specified. Allow clearance between crosstube and body for the stabilizer legs to be fully retracted. Consult chassis up-fitter guide prior to installation for proper welding and bolting procedures to chassis.

*See the 'RECOMMENDED MOUNTING TO TRUCK FRAME' page*

Leg installation (refer to assembly section of manual) legs are adjustable to maintain proper ground penetration of 4" to 6". The stabilizer is designed to level the truck and not lift the chassis off of the ground. They are designed to work in conjunction with the chassis suspension to stabilize the unit with the bulk of the load being supported by the chassis suspension and tires. Tires must be set at the proper pressure according to the chassis manufacture, stabilizers fully extended, and legs deployed on firm, level ground prior to crane use.

**IMPORTANT** - When legs are fully retracted in the stowed position, a 15° degree departure angle between the bottom of the rear tire and the lowest point of the stabilizer is recommended.

*See the 'DEPARTURE ANGLE' page*

For hydraulic stabilizers, the control valve and selector valve are supplied in kit. It is the installer's responsibility to supply necessary hoses and fittings between these valves and stabilizer. Refer to proper hydraulic schematic for your particular stabilizer model.

**IMPORTANT** - The selector valve is designed to separate the crane and stabilizer hydraulic circuits. This will not allow stabilizer use while in crane mode.

### FRONT MOUNTED

Front mounted crosstube will be located on top of the chassis frame and welded to body longills. Additional shear plates (installer supplied) to be welded to crosstube and bolted to chassis frame. Crosstube to be spaced away from body for leg clearance when fully retracted. See assembly section of manual for pullout and leg installation detail.



VENCO VENTURO INDUSTRIES LLC  
CINCINNATI, OHIO

INSTALLATION GUIDELINES

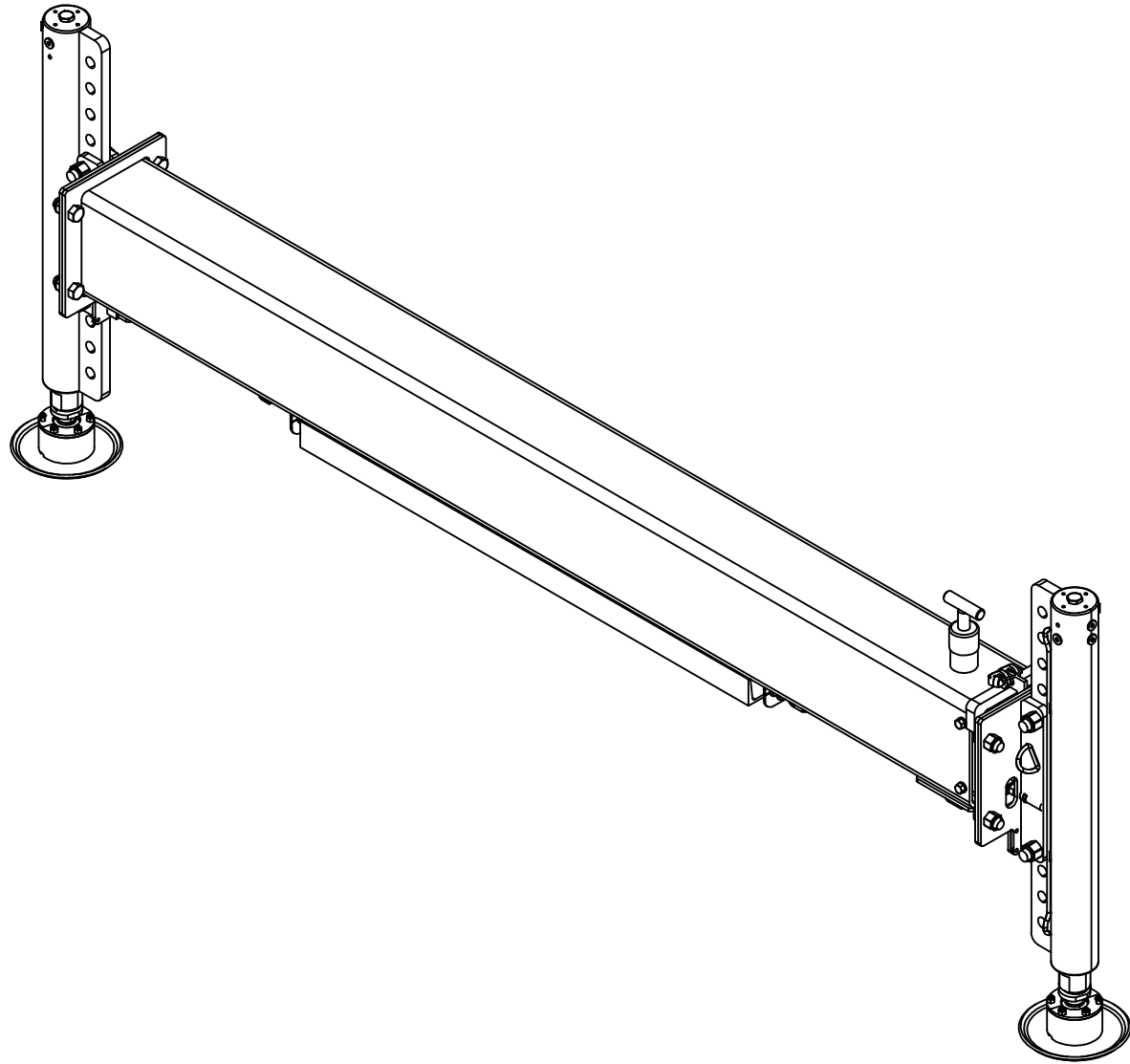
DATE  
12-08-23A

SECTION  
C200

STABILIZERS

SUPERSEDES  
01-17-17

25480



VENCO VENTURO INDUSTRIES LLC  
CINCINNATI, OHIO

ISOMETRIC VIEW

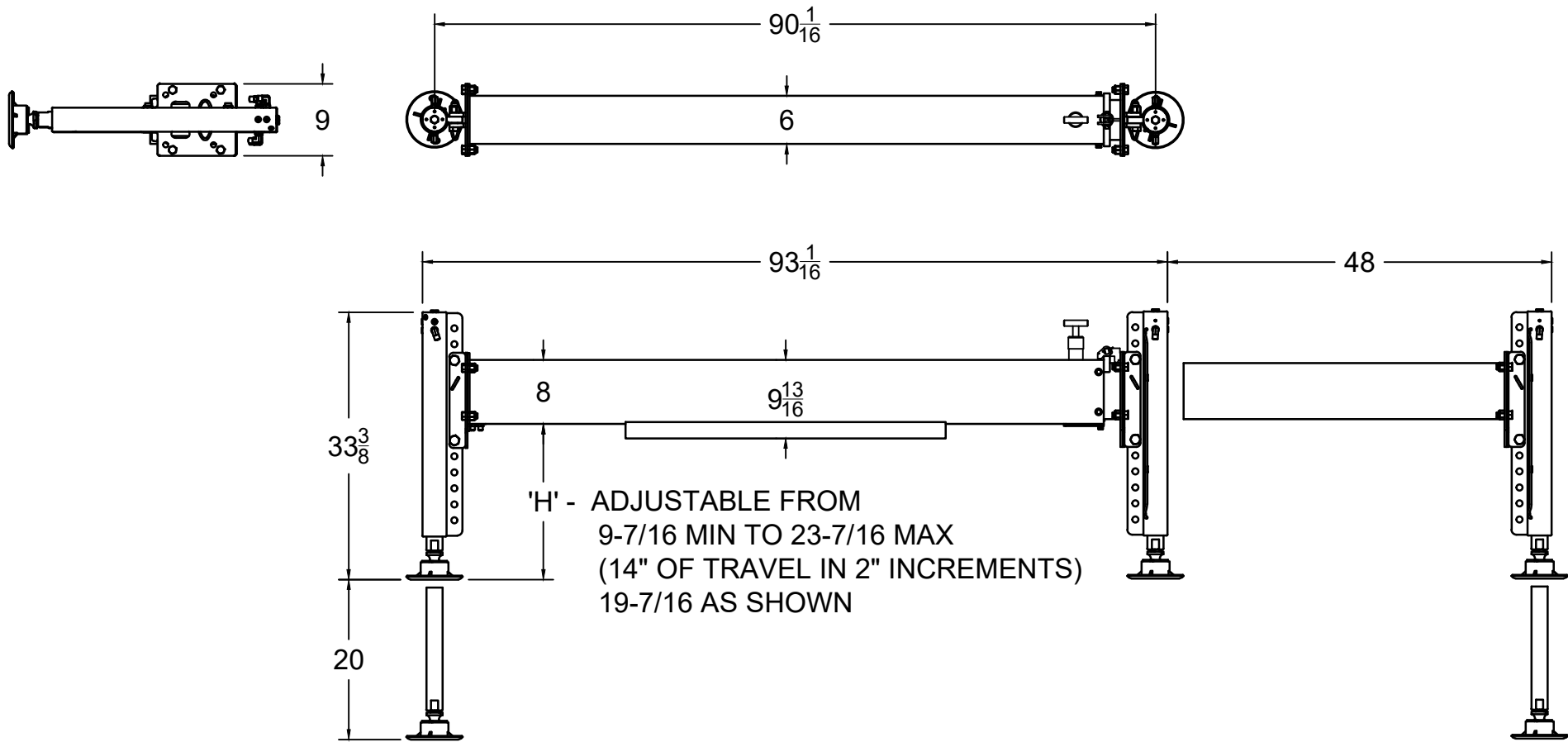
25500-PH OUTRIGGER (WITH SHORT LEGS)

DATE  
01-30-26A

SUPERSEDES  
01-23-26 ▲

SECTION  
C100

25481-1



VENCO VENTURO INDUSTRIES LLC  
 CINCINNATI, OHIO

TITLE  
 INSTALLATION DIMENSIONS

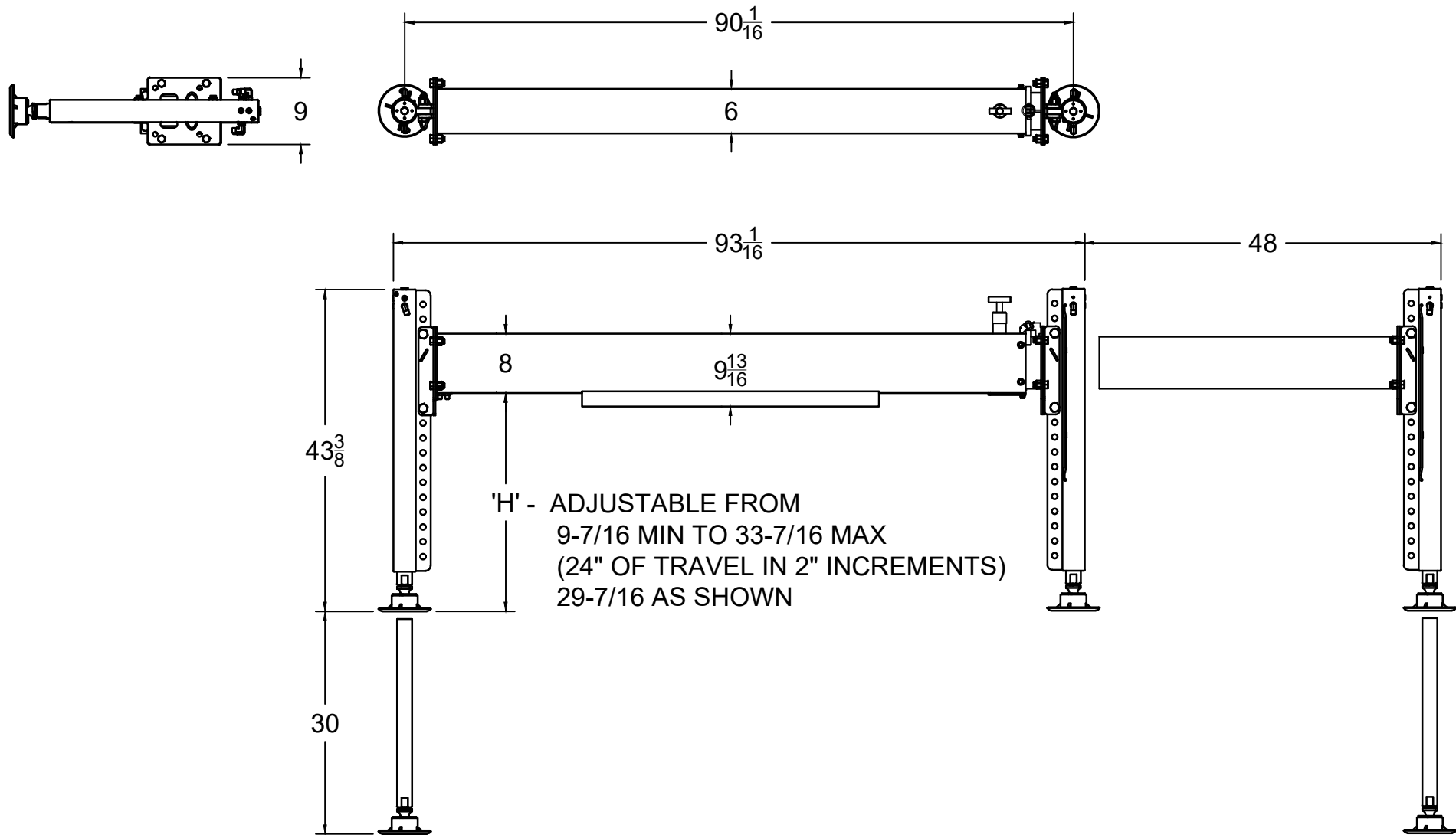
25500-PH-SL STABILIZER

DATE  
 01-23-26

SUPERSEDES  
 -

SECTION  
 C100

26127-1

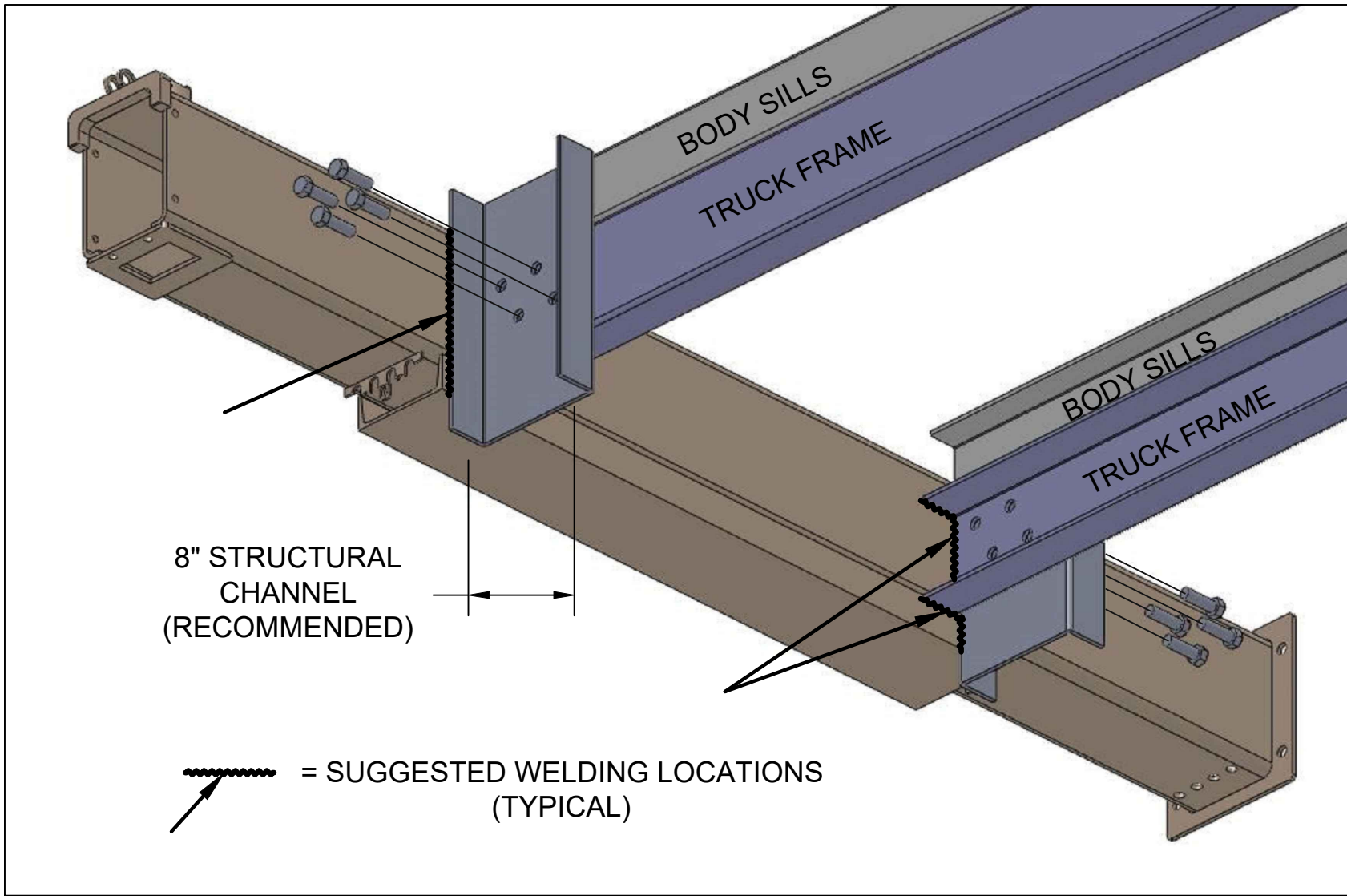


VENCO VENTURO INDUSTRIES LLC  
 CINCINNATI, OHIO

TITLE  
 INSTALLATION DIMENSIONS  
 25500-PH-LL STABILIZER

DATE  
 01-23-26  
 SUPERSEDES  
 -

SECTION  
 C100  
 26132-1



VENCO VENTURO INDUSTRIES LLC  
CINCINNATI, OHIO

RECOMMENDED MOUNTING TO TRUCK FRAME

25500 SERIES STABILIZERS

DATE  
01-23-26

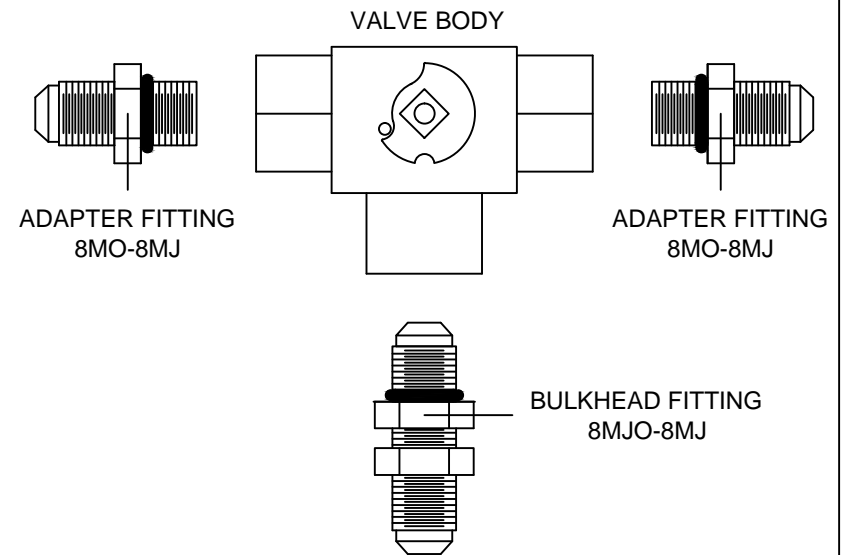
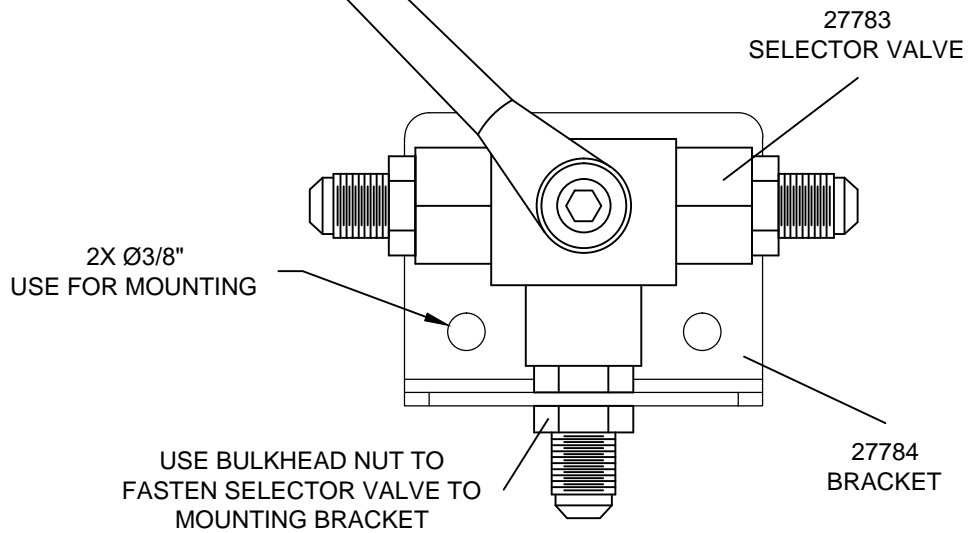
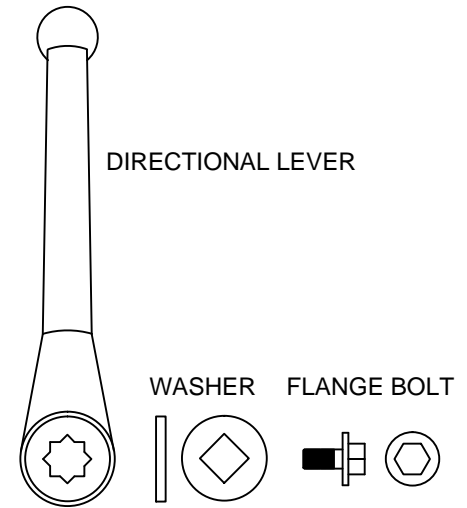
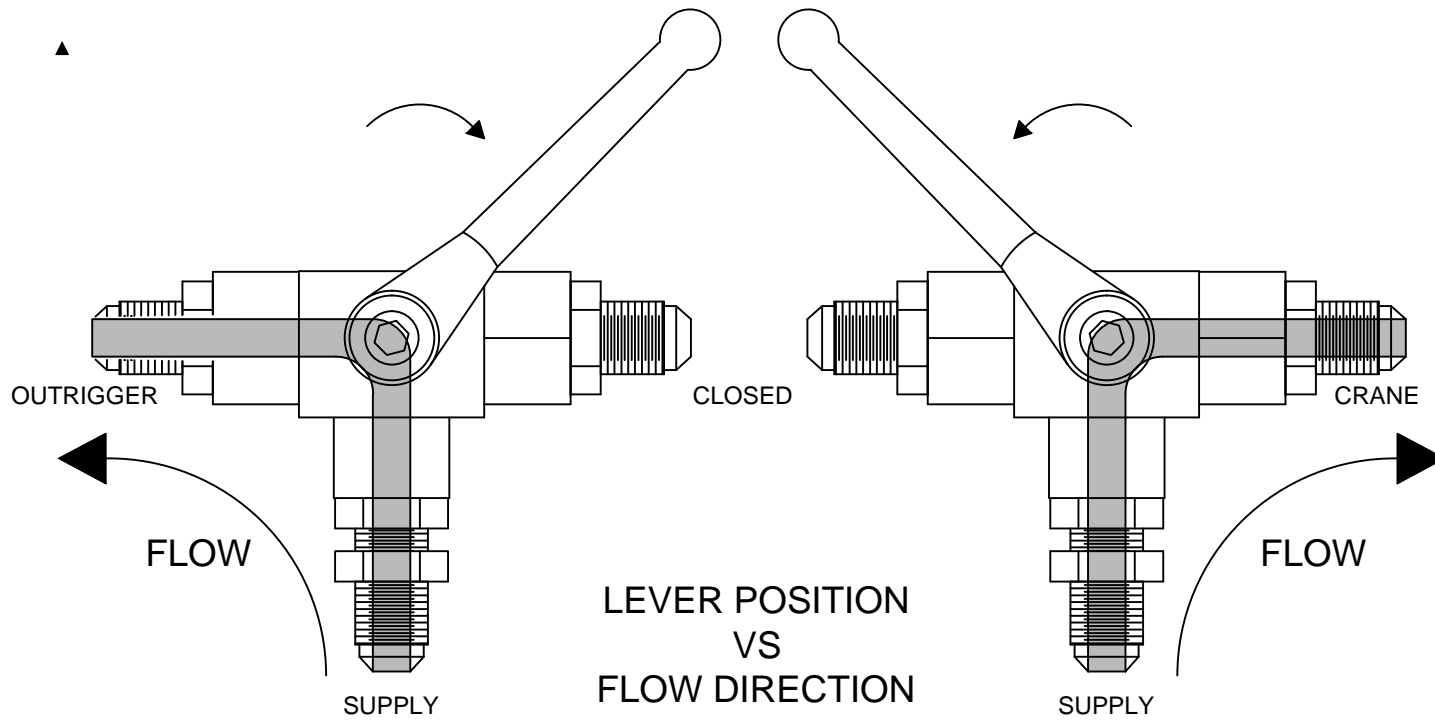
SUPERSEDES  
-

SECTION  
C200

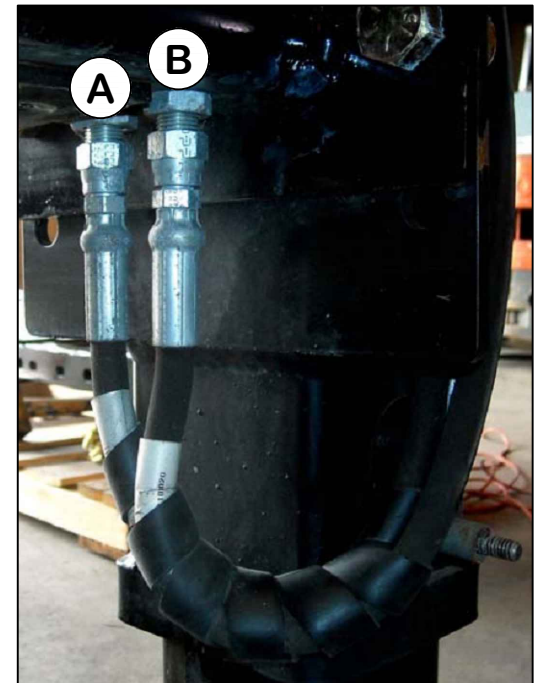
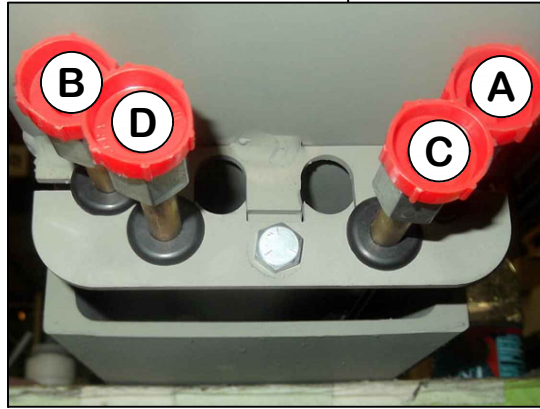
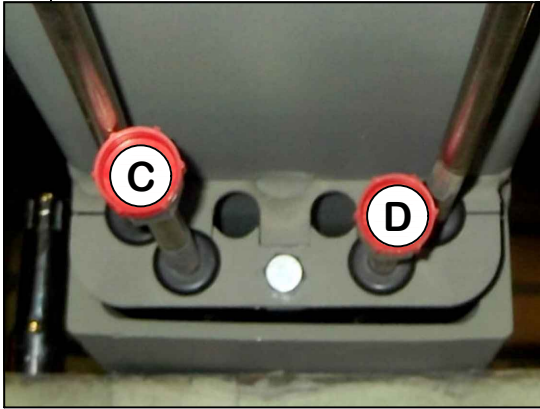
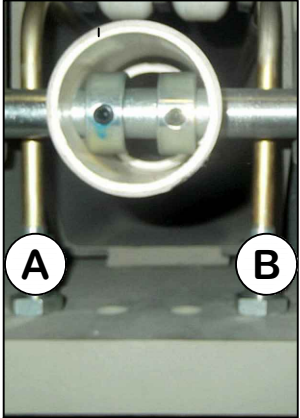
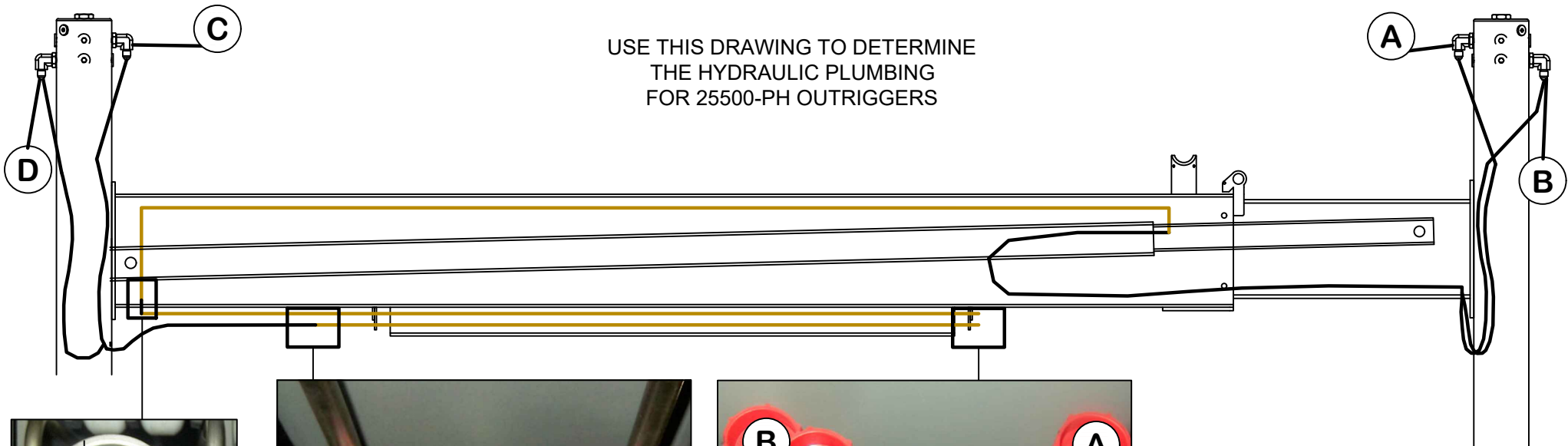
25484-3



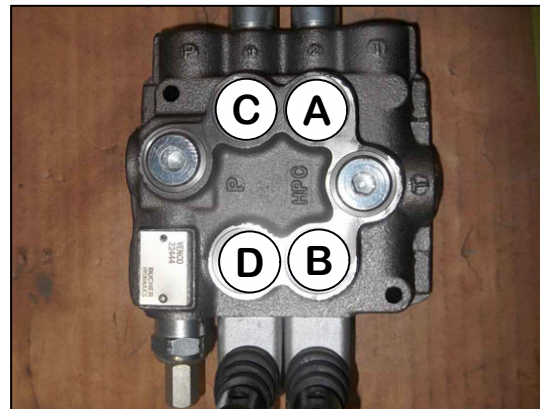
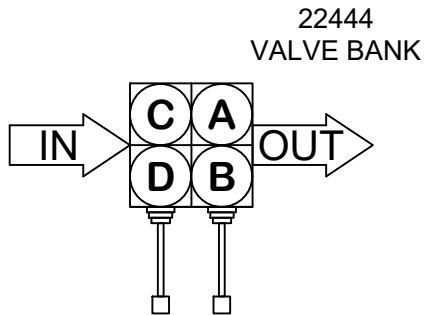
REFERENCE 25461-1 FOR ITEM LIST

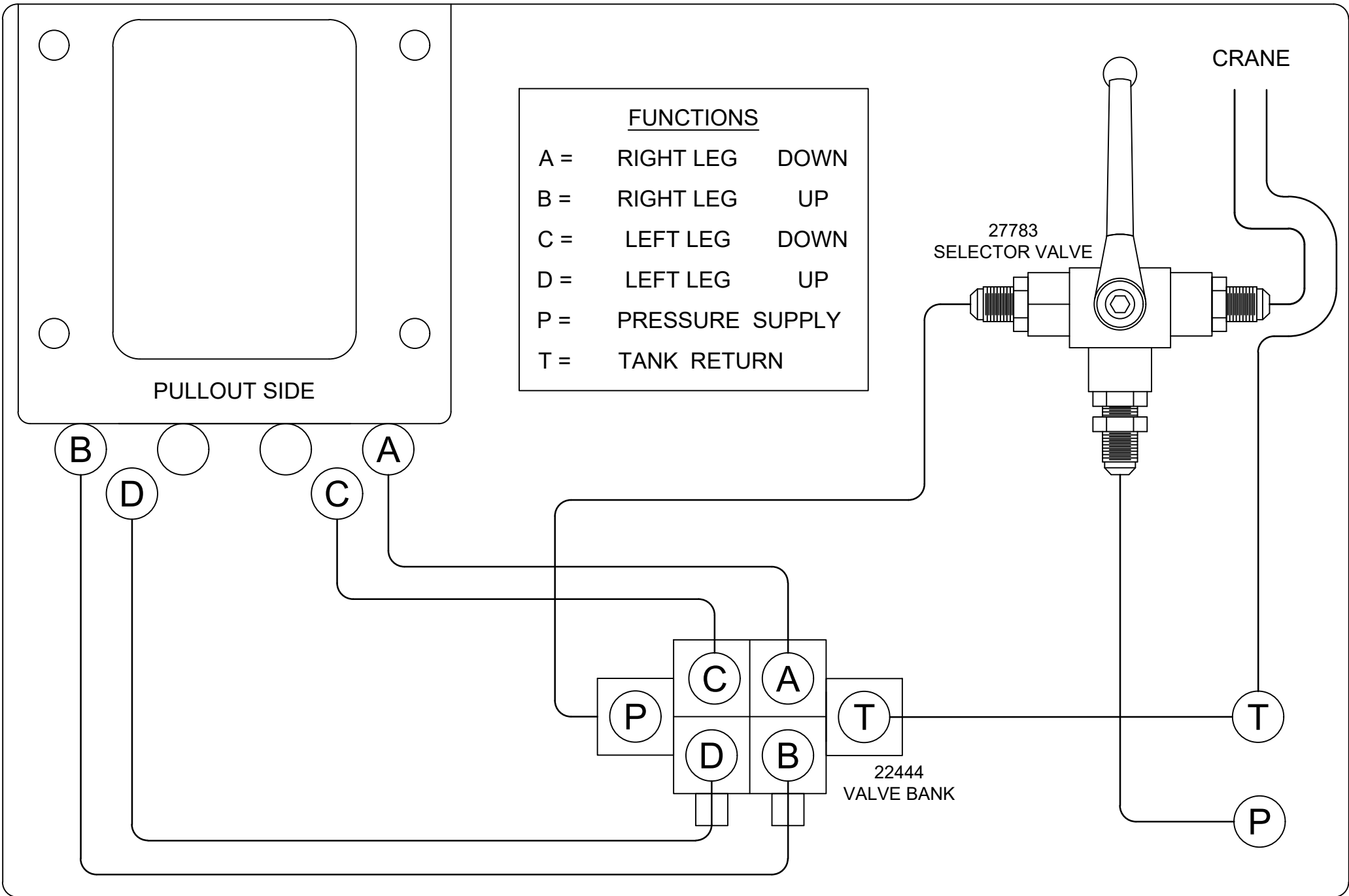


USE THIS DRAWING TO DETERMINE  
THE HYDRAULIC PLUMBING  
FOR 25500-PH OUTRIGGERS



OUTRIGGER FUNCTIONS		
A =	RIGHT LEG	DOWN
B =	RIGHT LEG	UP
C =	LEFT LEG	DOWN
D =	LEFT LEG	UP





VENCO VENTURO INDUSTRIES LLC  
CINCINNATI, OHIO

HYDRAULIC MAPPING, 2 OF 3

25500-PH OUTRIGGERS

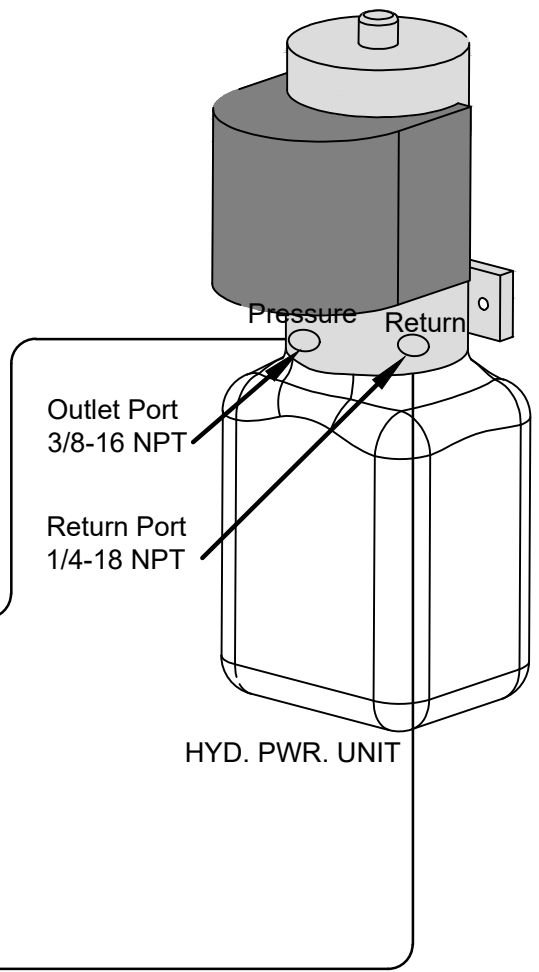
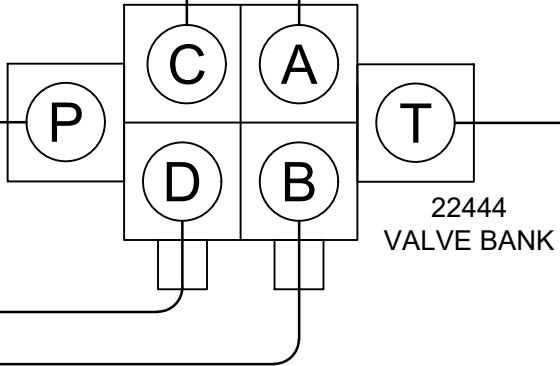
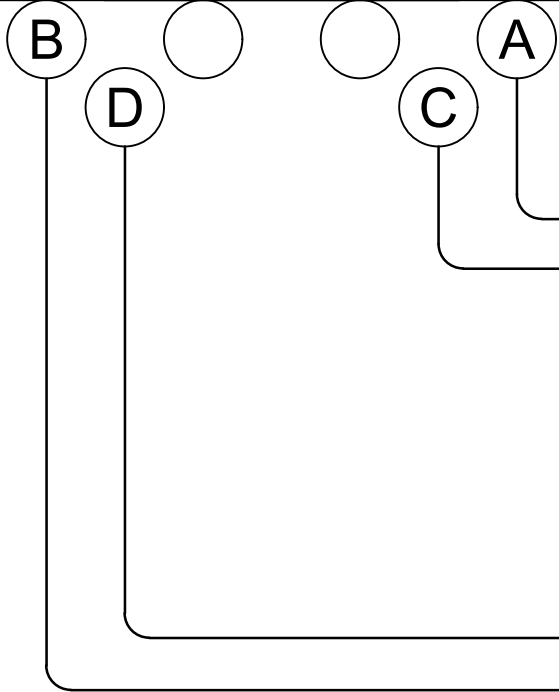
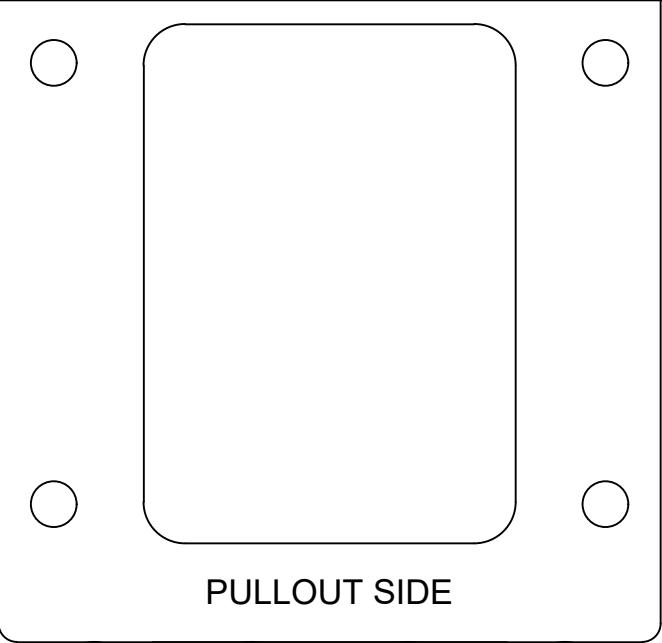
DATE  
01-23-26

SUPERSEDES  
-

SECTION  
C200

25473-1

FUNCTIONS		
A =	RIGHT LEG	DOWN
B =	RIGHT LEG	UP
C =	LEFT LEG	DOWN
D =	LEFT LEG	UP
P =	PRESSURE SUPPLY	
T =	TANK RETURN	



VENCO VENTURO INDUSTRIES LLC  
CINCINNATI, OHIO

HYDRAULIC MAPPING, 3 OF 3

25500-PHE OUTRIGGERS

DATE  
01-23-26

SUPERSEDES  
-

SECTION  
C200

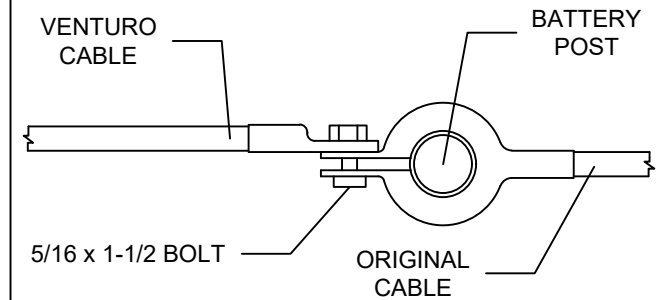
25474-1

BATTERY REQUIREMENTS

- 12 VOLT VEHICLE BATTERY REQUIREMENTS
  - 625 COLD CRANKING AMPS (AT 0° F)
  - 160 MINUTES RESERVE CAPACITY
  - 102 PLATES, 105 AMP-HR
- 12 VOLT AUXILIARY BATTERY REQUIREMENTS
  - 450 COLD CRANKING AMPS (AT 0° F)
  - 100 MINUTES RESERVE CAPACITY
  - 78 PLATES, 70 AMP-HR

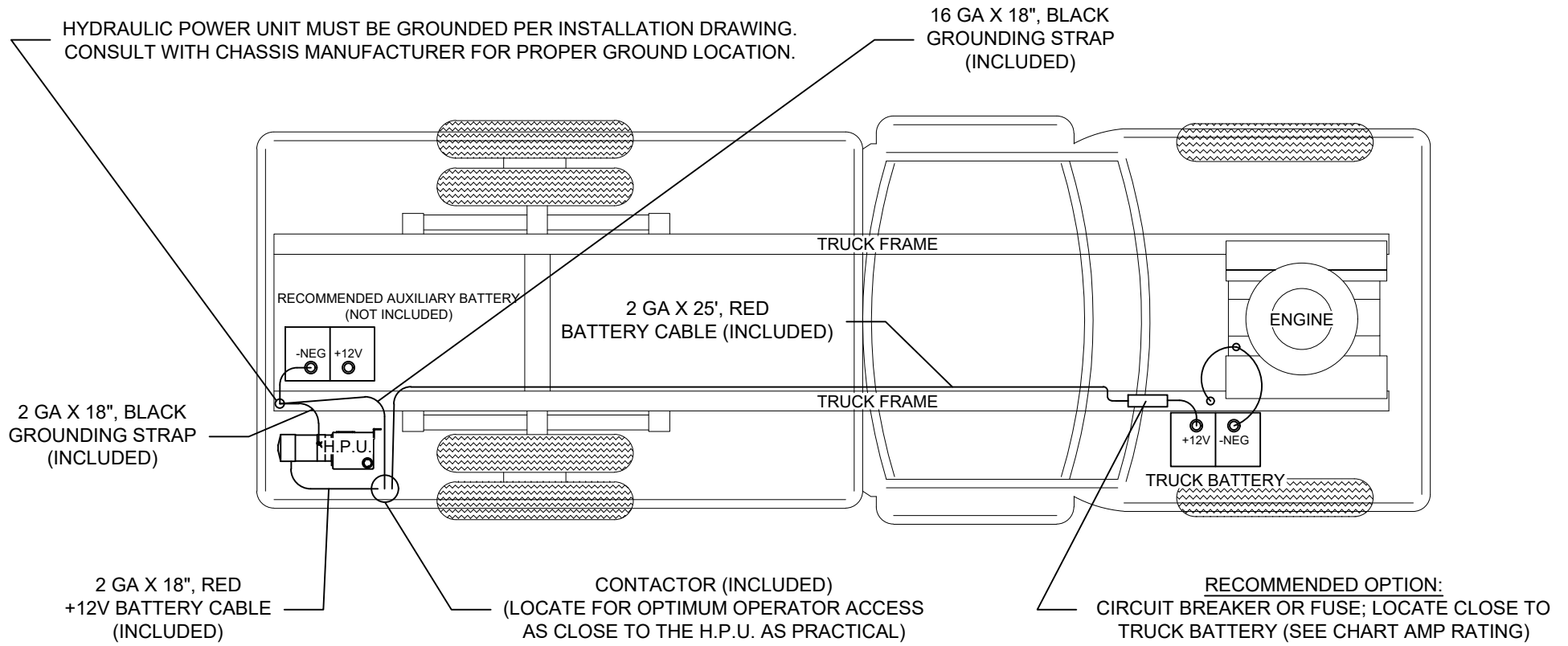
NOTE: OPERATING WITH THE VEHICLE BATTERY 'ONLY' IS PERMISSIBLE, BUT NOT RECOMMENDED.

RECOMMENDED BATTERY TERMINAL ATTACHMENT



RECOMMENDED CIRCUIT BREAKER

<u>HYDRAULIC POWER UNIT</u>	<u>DESCRIPTION</u>	<u>PART NUMBER</u>
	250 AMP, MANUAL RESET	22946-250



# RECOMMENDED DEPARTURE ANGLE



VENCO VENTURO INDUSTRIES LLC  
CINCINNATI, OHIO

RECOMMENDED DEPARTURE ANGLE

REAR MOUNTED OUTRIGGERS

DATE

08-25-22A

SUPERSEDES

01-18-17

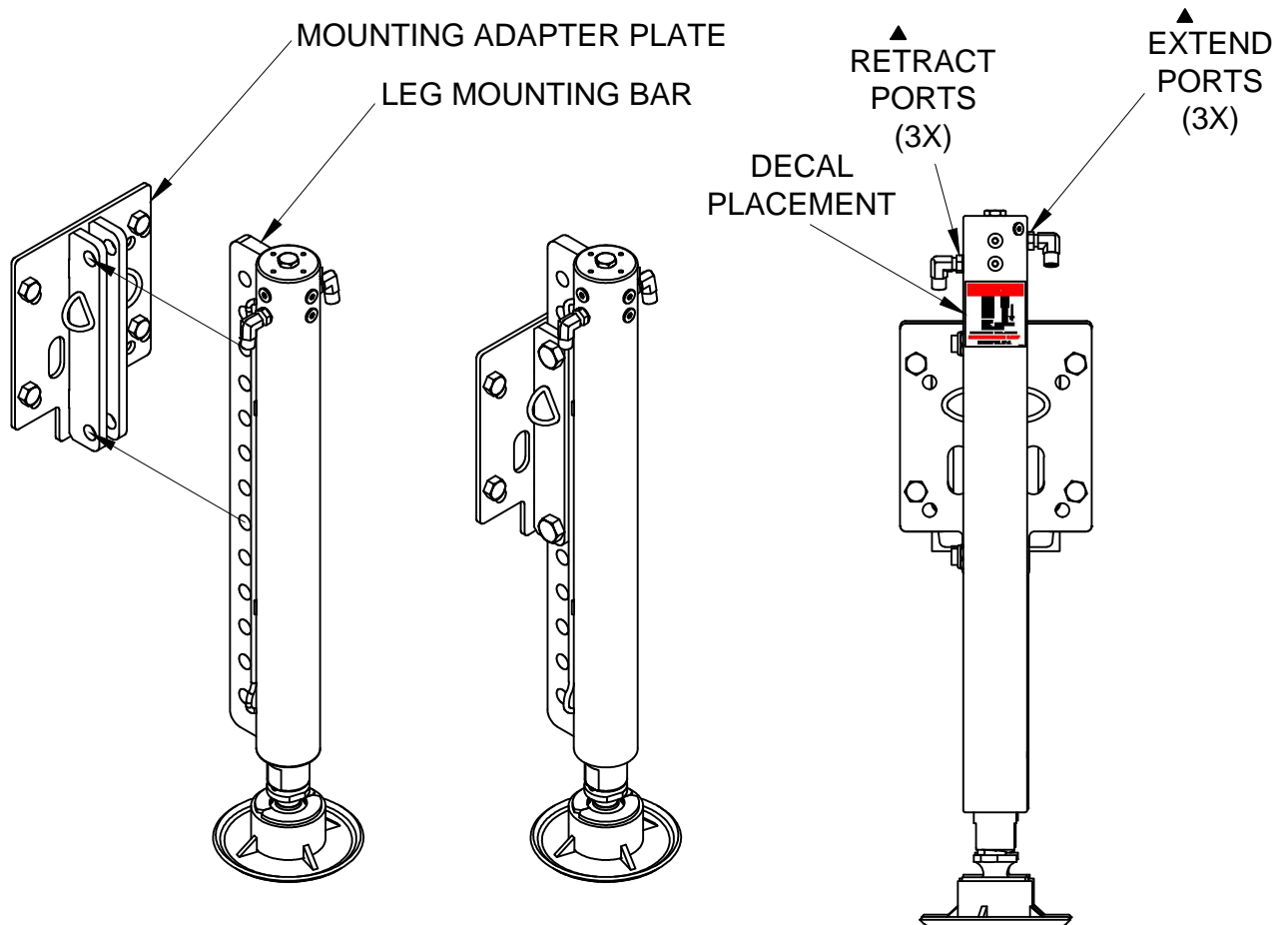
PAGE

-

25485

## MOUNTING THE STABILIZER LEGS - 25500-PHX & 26100-PHX SERIES STABILIZERS

1. Determine the desired vertical mounting position for the stabilizer legs.
2. Use the provided Hardware to attach the Leg Mounting Bar to the Mounting Adapter Plate (between the two bars): ▲  
[4] HEX HEAD CAP SCREW - 3/4-10 x 3", GR. 5, ZINC  
[4] LOCK NUT, NYLON-INSERT FULL-HEIGHT - 3/4-10, GR. 5, ZINC
3. Torque Hex Head Cap Screws to 100 ft-lb.
4. Place 24964 DANGER Decal, [1] on each Leg as shown.



-SL ("SHORT LEG")  
CYLINDER STROKE = 20"  
VERTICAL POSITION ADJUSTABILITY = 14"  
(7 MOUNTING POSITIONS IN 2" INCREMENTS)

-LL ("LONG LEG")  
CYLINDER STROKE = 30"  
VERTICAL POSITION ADJUSTABILITY = 24"  
(12 MOUNTING POSITIONS IN 2" INCREMENTS)



VENCO VENTURO INDUSTRIES LLC  
CINCINNATI, OHIO

MOUNTING THE LEGS

25500 & 26100 STABILIZERS

DATE  
01-27-25A

SUPERSEDES  
12-14-23

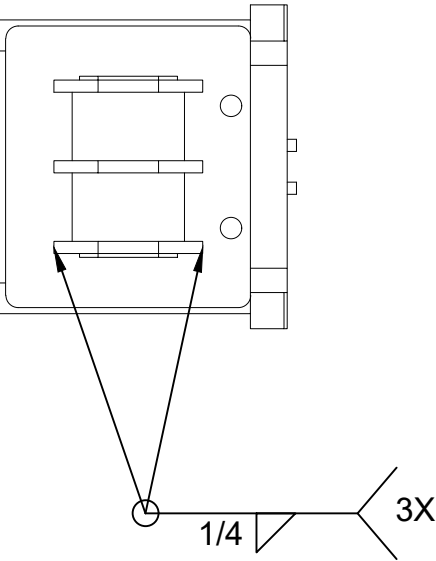
SECTION  
C200

26130

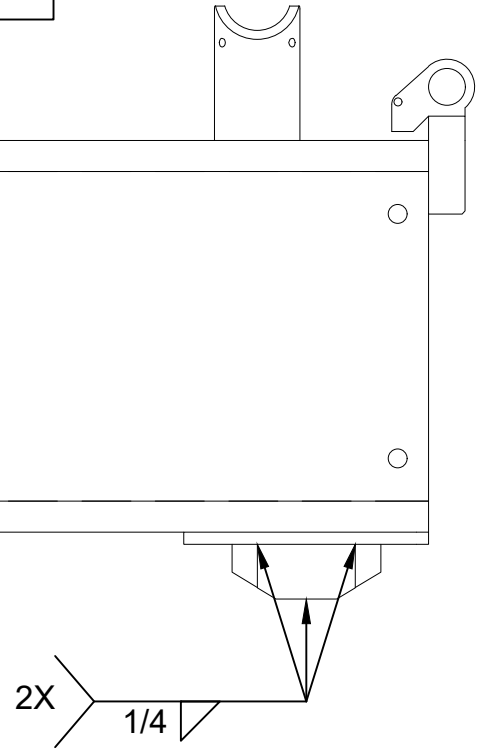
# OVERVIEW OF WHEEL AXLE SUPPORTS & KEEPERS, 25500-PH SERIES OUTRIGGERS

REVIEW ILLUSTRATIONS & PROCEEDING STEPS BEFORE WELDING AXLE SUPPORTS & KEEPERS ON CROSSTUBE.

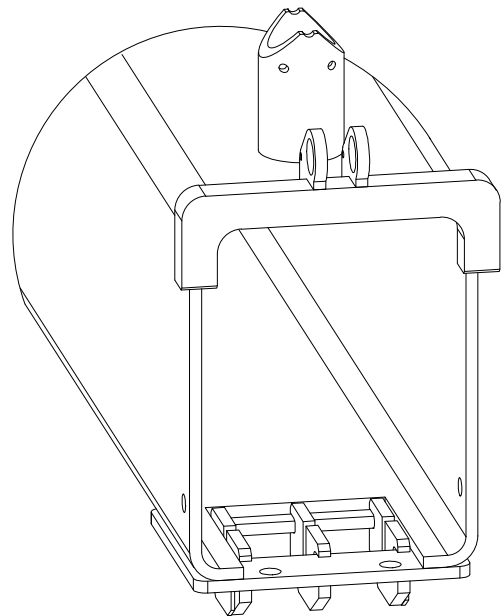
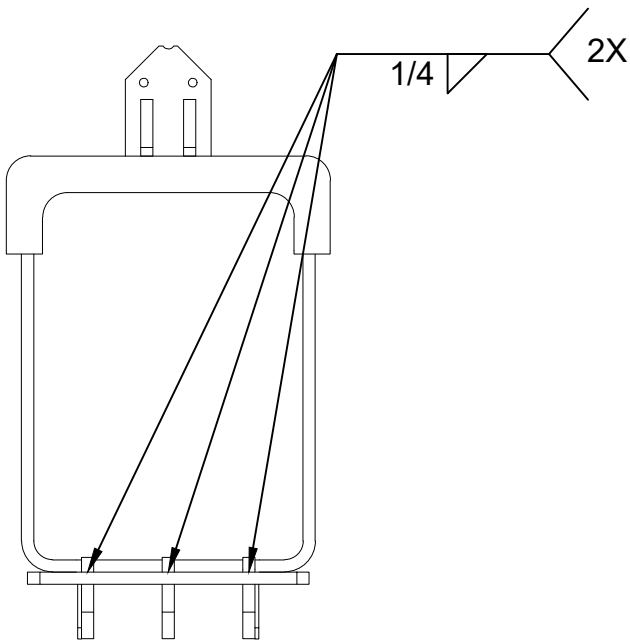
**BOTTOM**



**SIDE**



**FRONT**



VENCO VENTURO INDUSTRIES LLC  
CINCINNATI, OHIO

WHEEL AXLE OVERVIEW

25500-PH SERIES OUTRIGGERS

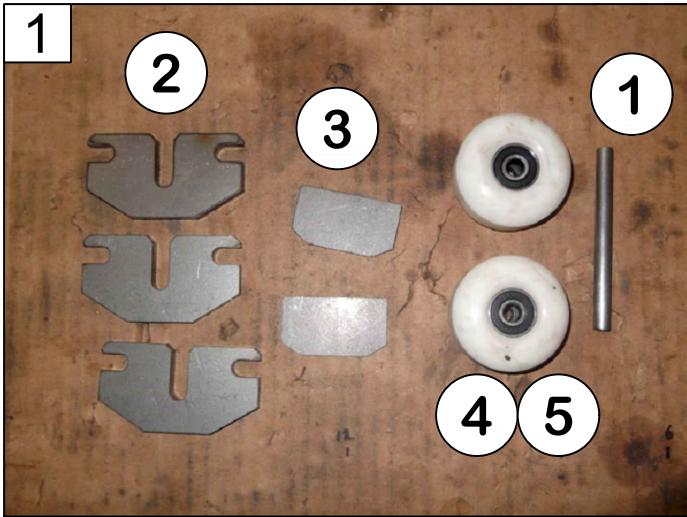
DATE  
01-23-26

SUPERSEDES  
-

SECTION  
C200

25422-2

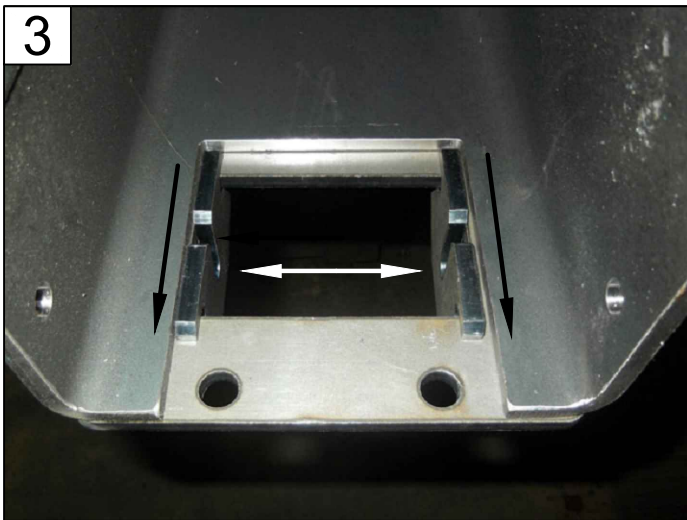
# WELDING THE WHEEL AXLE SUPPORTS & KEEPERS ASSEMBLY



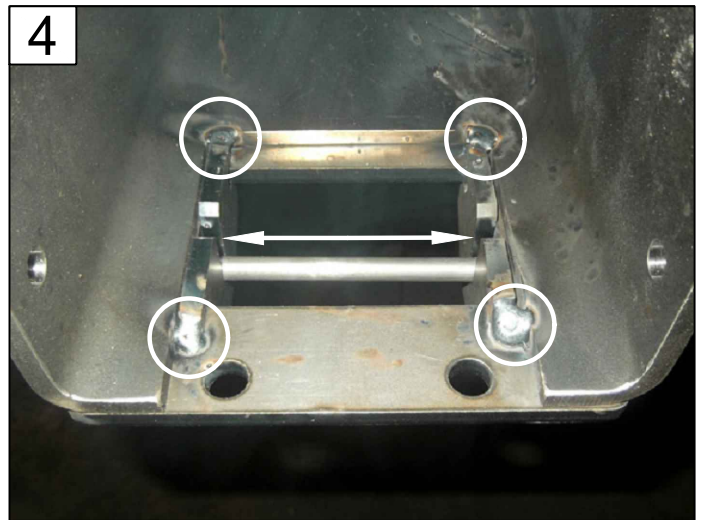
PARTS NEEDED FOR WELDING AXLE SUPPORTS & KEEPERS  
REFERENCE 25461-1 FOR ITEM LIST



REFERENCE FOR PLACING AXLE SUPPORTS



PLACE [2] AXLE SUPPORTS FLUSH TO SIDES  
PULL SUPPORTS BACK EVENLY



MAKE [4] TACKS ON ENDS OF SUPPORTS  
ENSURE AXLE ROD FITS



PLACE LAST AXLE SUPPORT CENTERED



PLACE EACH AXLE KEEPER ON OUTSIDE OF SUPPORTS  
FLUSH WITH EDGES EVEN



VENCO VENTURO INDUSTRIES LLC  
CINCINNATI, OHIO

WHEEL AXLE WELDING

25500 SERIES OUTRIGGERS

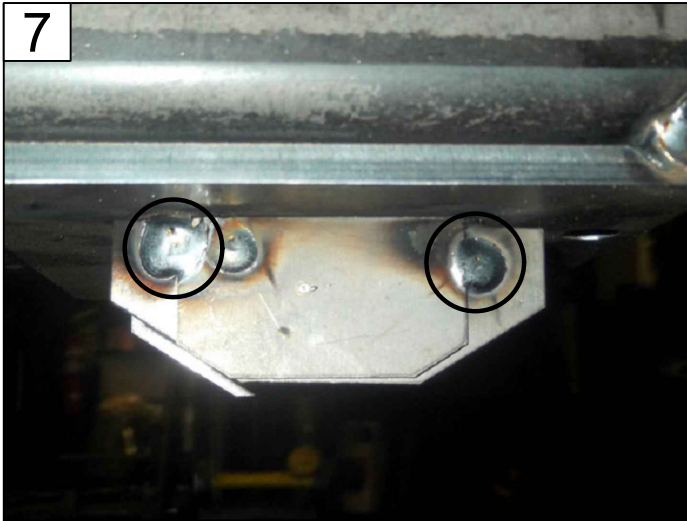
DATE  
01-29-26A

SUPERSEDES  
01-23-26

SECTION  
C200

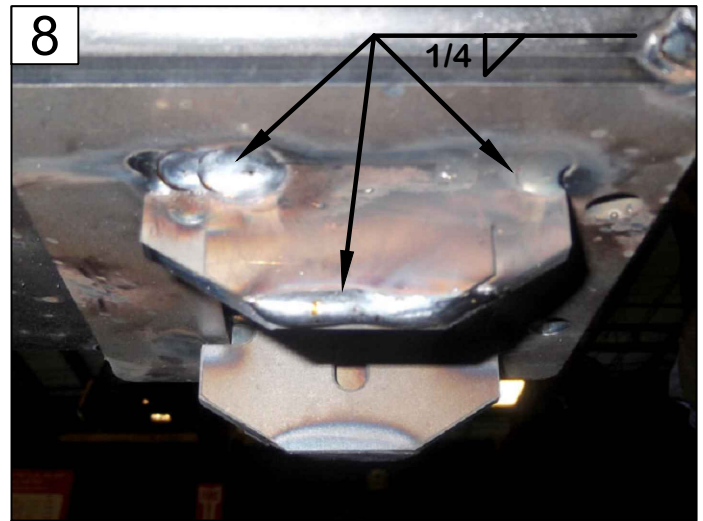
25423-2

# WELDING THE WHEEL AXLE SUPPORTS & KEEPERS ASSEMBLY



7

MAKE [2] TACKS ON EACH AXLE KEEPER



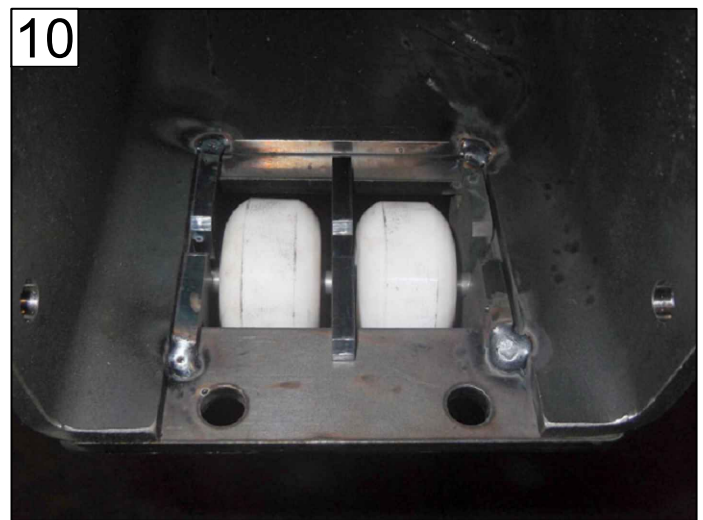
8

WELD EACH KEEPER TO CROSSTUBE & AXLE SUPPORTS



9

SETUP WHEELS & AXLE



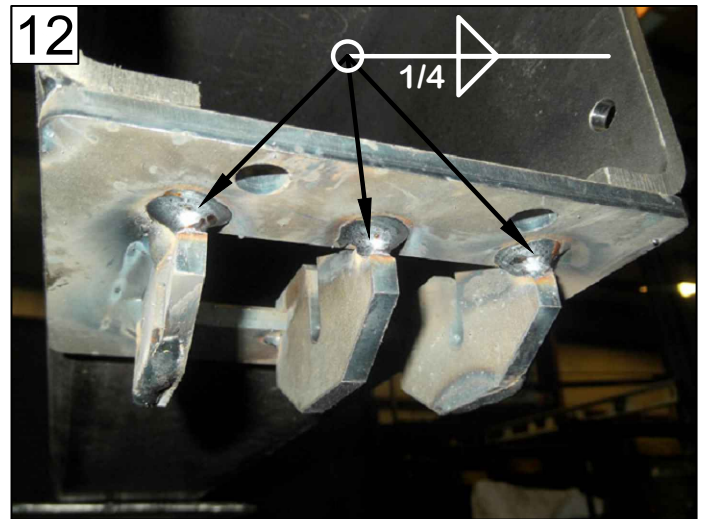
10

KEEP LAST AXLE SUPPORT CENTER  
USE WHEELS & AXLE TO ENSURE FIT



11

MAKE [2] TACKS TO CENTER SUPPORT



12

FINISH WELDING SUPPORTS UNDERNEATH  
ALL AROUND



VENCO VENTURO INDUSTRIES LLC  
CINCINNATI, OHIO

WHEEL AXLE WELDING

25500 SERIES OUTRIGGERS

DATE  
01-23-26

SUPERSEDES  
-

SECTION  
C200

25424-2

ASSEMBLY OF 25500-PH OUTRIGGER WITH LESS-CROSSTUBE CONFIGURATION

13



SET UP WHEELS & BEARINGS WITH AXLES, [2] SETS  
REFERENCE 25461-1, ITEMS 1, 4, & 5

14



INSERT [1] SET INTO PULLOUT

15



INSERT [1] SET INTO CROSSTUBE

16



SLIDE PULLOUT INTO CROSSTUBE

17



FASTEN NUT BAR RETAINERS INTO CROSSTUBE  
25461-1, ITEMS 6, 7, & 8

18



PUSH PULLOUT AGAINST CROSSTUBE



VENCO VENTURO INDUSTRIES LLC  
CINCINNATI, OHIO

LESS-CROSSTUBE ASSY

25500-PH OUTRIGGERS

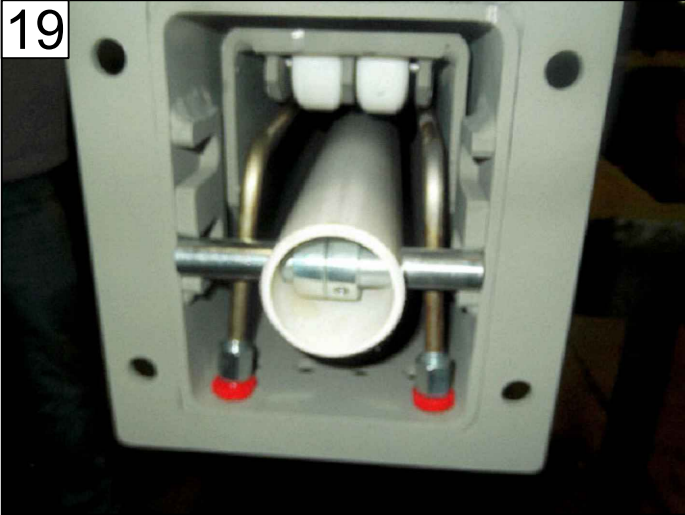
DATE  
01-29-26A

SUPERSEDES  
01-23-26

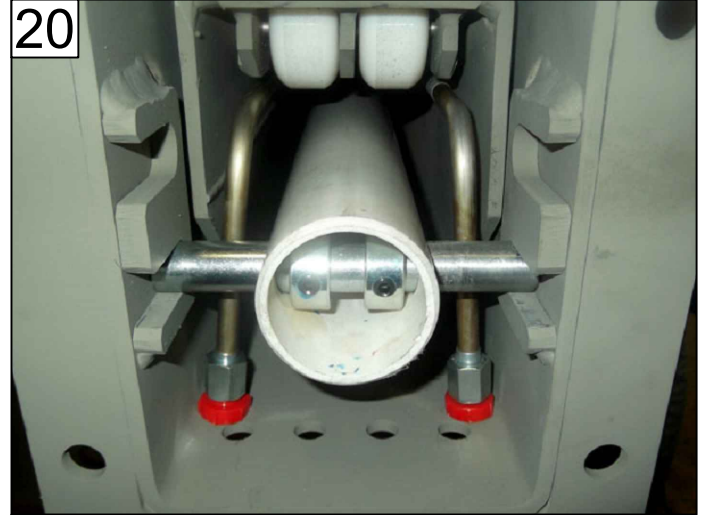
SECTION  
C200

25468-1

ASSEMBLY OF 25500-PH OUTRIGGER WITH LESS-CROSSTUBE CONFIGURATION



19 INSERT SHAFT THROUGH PIPE, LOCK COLLARS INSIDE  
REFERENCE 25461-1 ITEMS 14 & 15



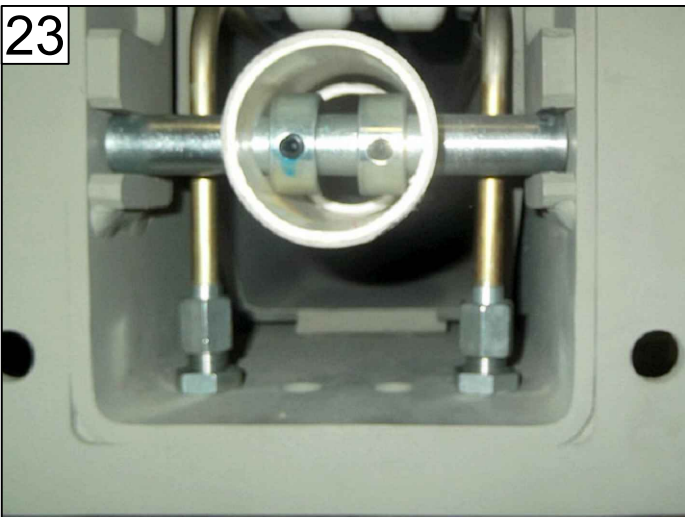
20 PUSH SHAFT INTO BOTTOM SLOT OF CROSSTUBE  
LOCTITE & FASTEN COLLARS CENTER & FLUSH



21 FASTEN BULKHEADS IN HOLES FURTHEST APART  
REFERENCE 25461-1 ITEM 13



22 FASTEN 60" HYDRAULIC TUBES TO BULKHEADS  
REFERENCE 25461-1 ITEM 23



23 FASTEN INNER HYDRAULIC TUBES TO BULKHEADS



24 PLACE 47" HYDRAULIC TUBES  
REFERENCE 25461-1 ITEM 24



VENCO VENTURO INDUSTRIES LLC  
CINCINNATI, OHIO

LESS-CROSSTUBE ASSY

25500-PH OUTRIGGERS

DATE  
01-28-26A

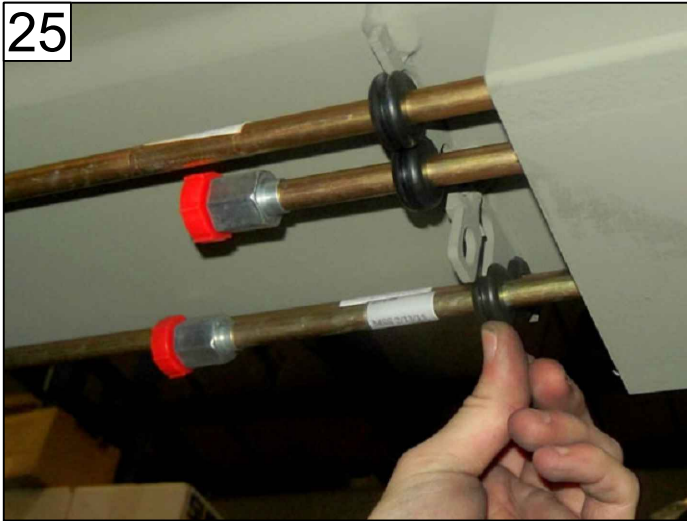
SUPERSEDES  
01-23-26

SECTION  
C200

25469-1

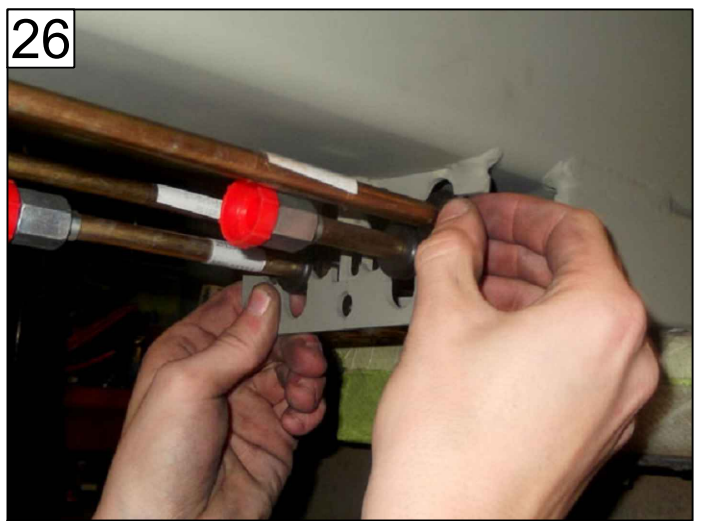
ASSEMBLY OF 25500-PH OUTRIGGER WITH LESS-CROSSTUBE CONFIGURATION

25



PUSH GROMMETS AROUND TUBES  
REFERENCE 25461-1 ITEM 25

26



CLAMP AROUND GROMMETS  
REFERENCE 25461-1 ITEM 26

27



FASTEN CLAMP, ITEMS 27 & 28  
REPEAT STEPS 25 TO 27 FOR OPPOSITE CLAMP

28



LINE UP LOCK-PIN HOLES FOR PULLOUT & CROSSTUBE

29



INSERT ROLL PINS  
REFERENCE 25461-1 ITEM 10

30



GREASE T-HANDLE'S SPRING  
REFERENCE 25461-1 ITEM 11



VENCO VENTURO INDUSTRIES LLC  
CINCINNATI, OHIO

LESS-CROSSTUBE ASSY

25500-PH OUTRIGGERS

DATE  
01-29-26A

SUPERSEDES  
01-23-26

SECTION  
C200

25470-1

# ASSEMBLY OF 25500-PH OUTRIGGER WITH LESS-CROSSTUBE CONFIGURATION

31



PLACE T-HANDLE  
PUSH SPRING-LOADED WASHER DOWN

32



DRIVE ROLL PINS THROUGH  
FLUSH ON BOTH ENDS

33



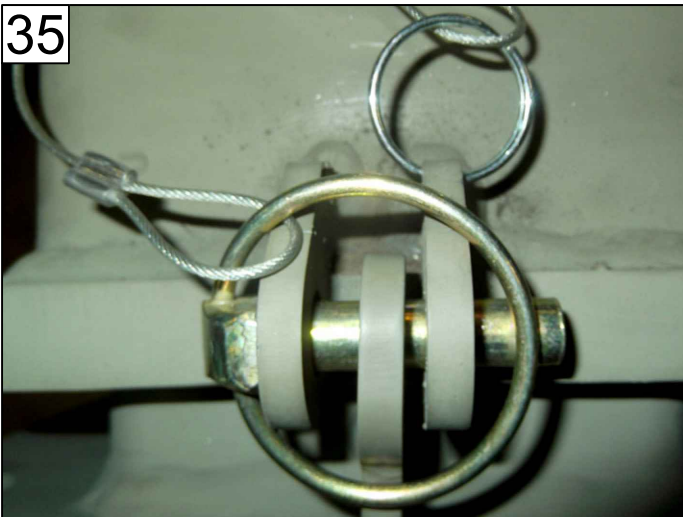
COVER WITH RUBBER BOOT

34



ATTACH SECURITY PIN'S KEY-RING ON EITHER TAB  
REFERENCE 25461-1 ITEM 12

35



ENSURE PIN IS THROUGH ALL TABS & CLAMP MEETS END



VENCO VENTURO INDUSTRIES LLC  
CINCINNATI, OHIO

LESS-CROSSTUBE ASSY

25500-PH OUTRIGGERS

DATE  
01-29-26A

SUPERSEDES  
01-23-26

SECTION  
C200

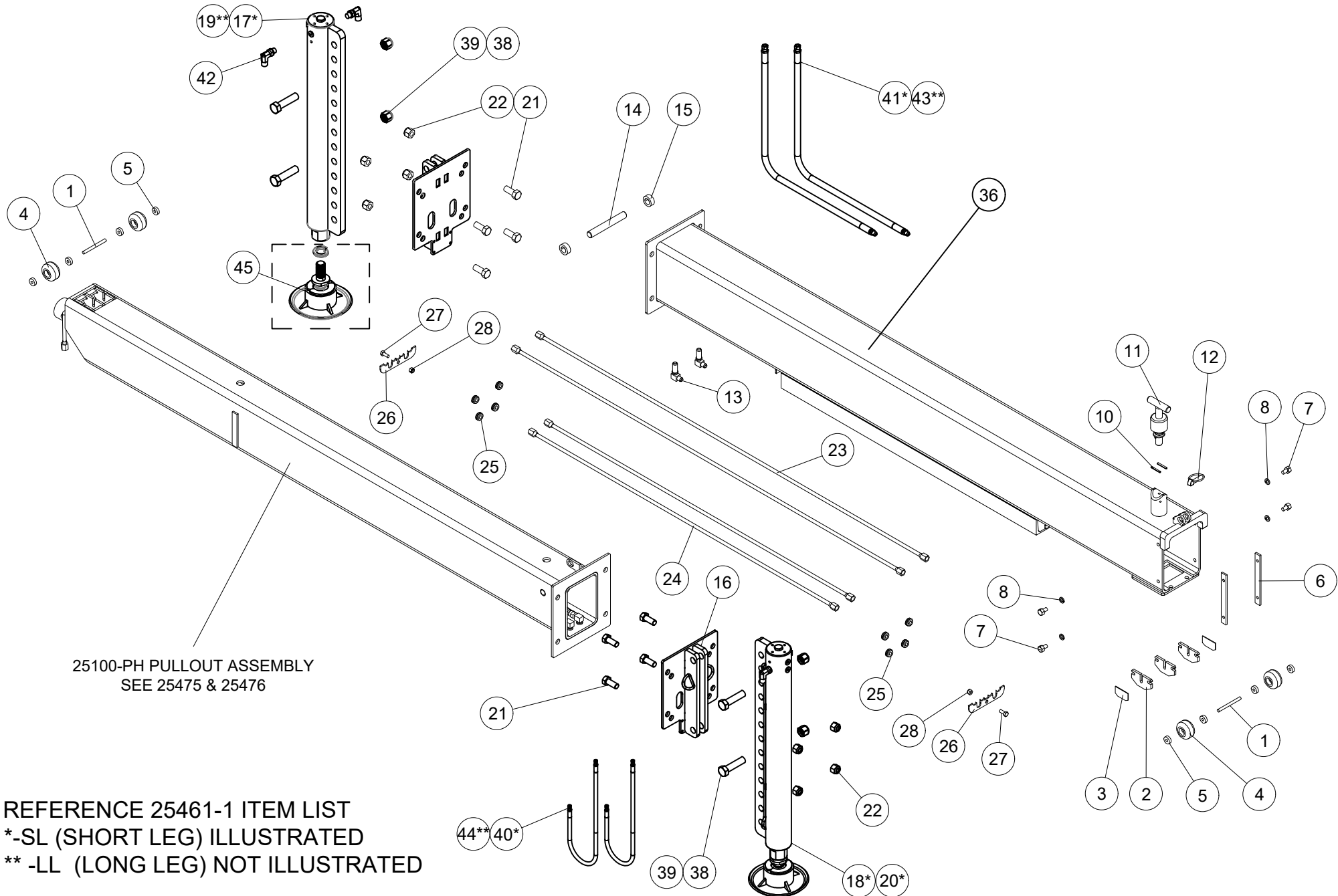
25471-1

# SECTION 400

# REPLACEMENT PARTS



VENCO VENTURO INDUSTRIES LLC  
CINCINNATI, OHIO



**PARTS BREAKDOWN, 25500-PH OUTRIGGERS (LESS-CROSSTUBE PARTS INCLUDED)**

25500-PH OUTRIGGERS PARTS BREAKDOWN		SHORT LEGS	LONG LEGS	LESS-CROSSTUBE PARTS INCLUDED
#	DESCRIPTION	QTY		PART #
1	AXLE; WHEEL	2	2	25090
2	AXLE SUPPORT; WHEEL AXLE	3	3	25097
3	AXLE KEEPER; WHEEL AXLE	2	2	25091
4	WHEEL; MANUAL PULLOUT	4	4	25082
5	BEARING; WHEEL	8	8	25078
6	NUT BAR RETAINER; MANUAL PULLOUT	2	2	25065
7	HEX HEAD CAP SCREW; 3/8-16 X 1/2, GR. 5, ZINC	4	4	!HHCS03816050
8	LOCK WASHER; 3/8, GR. 5, ZINC	4	4	!LWSH-038
9	-	-	-	-
10	ROLL PIN; 3/16 X 1-3/8, STAINLESS STEEL	2	2	IRPIN-019138-SS
11	T-HANDLE; LOCKING PIN, MANUAL PULLOUT	1	1	22668
12	SECURITY PIN; CLAMPING PIN & KEY-RING	1	1	24981
13	BULKHEAD FITTING; 90°, 6MJ-6MJ	2	2	H2701-0606
14	SHAFT; TELESCOPIC PVC PIPE TO CROSSTUBE	1	1	25051
15	LOCK COLLARS; SHAFT, PVC PIPE	2	2	00210
▲	16 ADAPTER MOUNTING PLATE	2	2	25230
▲	17 HYDRAULIC SHORT LEG; LEG ONLY	-	-	25232
▲	18 HYDRAULIC SHORT LEG; WITH SWIVEL FOOT	2	-	26109-SL
▲	19 HYDRAULIC LONG LEG; LEG ONLY	-	-	25233
▲	20 HYDRAULIC LONG LEG; WITH SWIVEL FOOT	-	2	26109-LL
21	HEX HEAD CAP SCREW; 5/8-11 X 1-1/2, GR. 8, ZINC	8	8	!HHCS06311150-8
22	LOCK NUT; 5/8-11, GR. 8, ZINC, NYLON-INSERT	8	8	!LNUT-06311-8
23	HYDRAULIC TUBE; 60" LONG	2	2	25138
24	HYDRAULIC TUBE; 47" LONG	2	2	25139
25	GROMMET; BLACK RUBBER, HYDRAULIC TUBES	8	8	14883
26	CLAMP PLATE; HYDRAULIC TUBES & GROMMETS	2	2	25157
27	HEX HEAD CAP SCREW; 5/16-18 X 3/4, GR. 5, ZINC	2	2	!HHCS03118075
28	LOCK NUT; 5/16-18, GR. 5, ZINC, NYLON-INSERT	2	2	!LNUT-03118
29	DECAL; CRUSHING INJURY, SEE 'MOUNTING THE LEGS'	2	2	24964
30	FITTING; 06MJ-06ORB 90°	4	4	FF6801-0606
31	VALVE BLOCK; 2-SPOOL, OUTRIGGER FUNCTIONS	1	1	22444
32	ADAPTER FITTING; STRAIGHT, 8MJ-8MO	2	2	H6400-0808
33	ADAPTER FITTING; STRAIGHT, 6MJ-8MO	4	4	H6400-0608
34	SELECTOR VALVE; HYDRAULIC PRESSURE DIRECTION	1	1	27783
35	BRACKET; SELECTOR VALVE, MOUNTING	1	1	27784
36	OUTRIGGER & ACCESSORIES MANUAL	1	1	INST-21024
37	CROSSTUBE; 25100 SERIES OUTRIGGERS	1	1	25085
38	HEX HEAD CAP SCREW; 3/4-10 X 3, GR. 5, ZINC	4	4	!HHCS07510300
39	LOCK NUT (FULL); 3/4-10, GR. 5, ZINC, NYLON-INSERT	4	4	!LNUT-07510
40	HOSE; 4' EXTENDING SIDE SHORT LEG, UP/DOWN	2	-	25501
41	HOSE; FIXED SIDE SHORT LEG, UP/DOWN	2	-	25502
42	-	-	-	-
43	HOSE ASSY; FIXED SIDE LONG LEG, UP/DOWN	-	2	25504
44	HOSE ASSY; 4' EXTENDING SIDE LONG LEG, UP/DOWN	-	2	25503
45	SWIVEL FOOT ASSY; SWIVEL FOOT ONLY	-	-	26115

REFERENCE 25462-1 & 25467-1



VENCO VENTURO INDUSTRIES LLC  
CINCINNATI, OHIO

PARTS BREAKDOWN

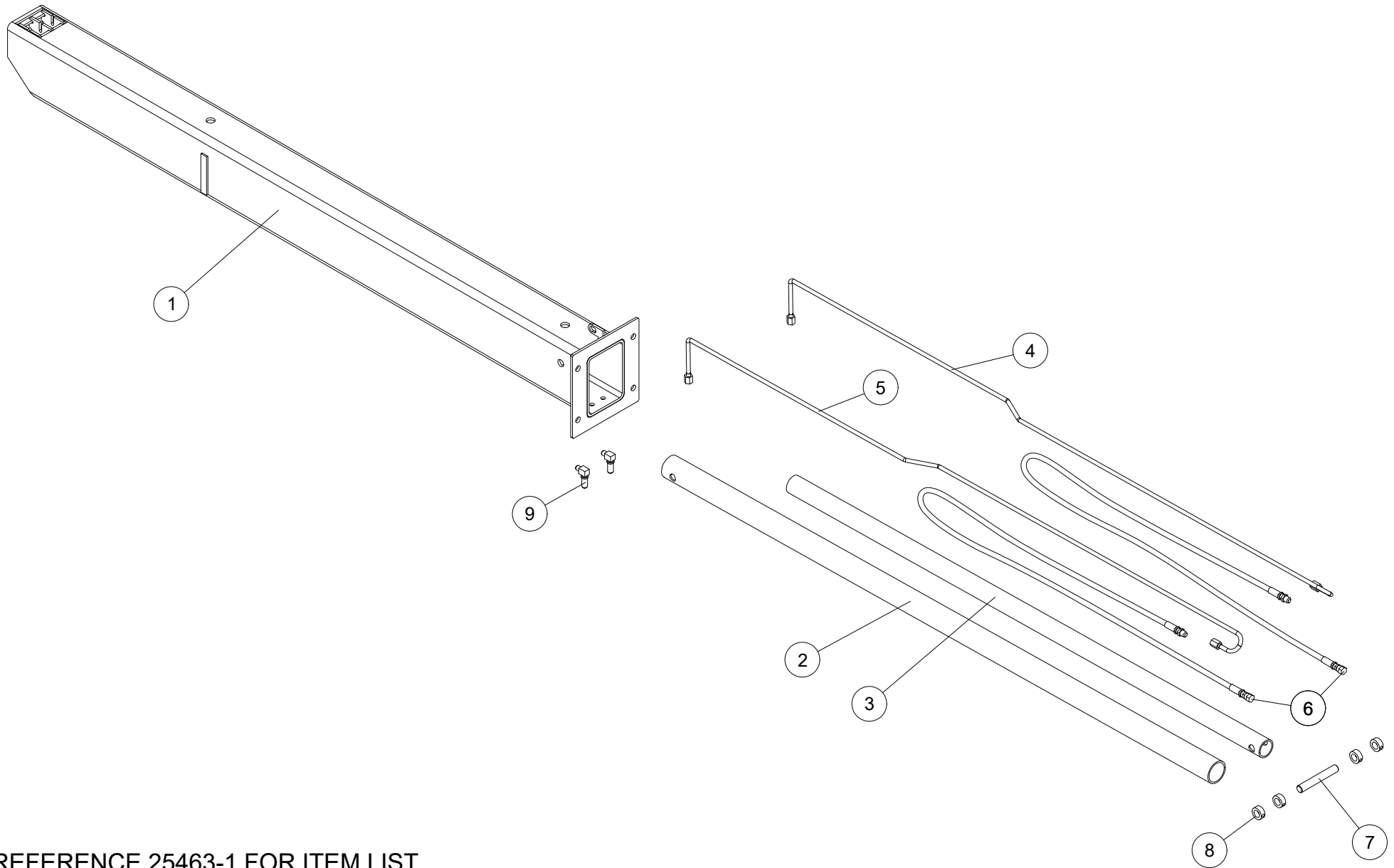
25500-PH OUTRIGGERS

DATE  
01-29-26A

SUPERSEDES  
01-23-26

SECTION  
C400

25461-1



REFERENCE 25463-1 FOR ITEM LIST



VENCO VENTURO INDUSTRIES LLC  
CINCINNATI, OHIO

PARTS BREAKDOWN

25500-PH PULLOUT ASSEMBLY

DATE  
01-23-26

SUPERSEDES  
-

SECTION  
C400

25464-1

PARTS BREAKDOWN, 25500-PH PULLOUT ASSEMBLY

25500-PH PULLOUT ASSEMBLY PARTS BREAKDOWN			
#	DESCRIPTION	QTY	PART #
1	PULLOUT; 4', 25100-PH(X) CONFIGURATION	1	25087-2
2	PVC PIPE; OUTER, TELESCOPING	1	25079
3	PVC PIPE; INNER, TELESCOPING	1	25092
4	HYDRAULIC TUBE; RIGHT LEG, DOWN	1	25137
5	HYDRAULIC TUBE; RIGHT LEG, UP	1	25136
6	HOSE ASSEMBLY; RIGHT LEG, UP & DOWN	2	25149
7	SHAFT; PULLOUT & INNER PVC PIPE	1	25052
8	LOCK COLLAR; SHAFT, PVC PIPE	4	00210
9	BULKHEAD FITTING; 90°, 6MJ-6MJ, LOCK NUT	2	H2701LN-0606

REFERENCE 25464-1



VENCO VENTURO INDUSTRIES LLC  
CINCINNATI, OHIO

PARTS BREAKDOWN

25500-PH PULLOUT ASSY

DATE  
01-23-26

SUPERSEDES  
-

SECTION  
C400

25463-1

## PARTS BREAKDOWN, PHE OUTRIGGERS HYDRAULIC POWER UNIT &amp; KIT (REF: 19401)

PHE OUTRIGGERS HYDRAULIC POWER UNIT & KIT (REF: 19401) PARTS BREAKDOWN			
#	DESCRIPTION	QTY	PART #
1	H.P.U. PUMP; PHE OUTRIGGERS	1	17260-1
2	HOSE ASSEMBLY; RETURN, 60", 8MO-8FJ	2	22438
3	ELBOW FITTING; 90°, 8MJ-6MP	1	H2501-0806
4	ELBOW FITTING; 90°, 8MJ-4MP	1	H2501-0804
5	CONTACTOR	1	15831C
6	SWITCH; MOMENTARY PUSH-BUTTON	1	17769
7	BRACKET; SWITCH, MOMENTARY PUSH-BUTTON	1	19402
8	BOOT COVER; MOTOR, H.P.U.	1	16143-3
9	BREATHER CAP; RESERVOIR, H.P.U.	1	19276
10	BOOT COVER; POSITIVE TERMINAL, MOTOR	1	18542
11	DECAL; OIL LEVEL	1	13397
12	BATTERY CABLE; 2 GA, 25' LONG, RED	1	01025-2*25FT
13	BATTERY CABLE; 2 GA, 18" LONG, RED	1	20133
14	GROUND CABLE; 2 GA, 18" LONG, BLACK	1	20133-1
15	WIRE; 16 GA, 20" LONG, #10 TERMINAL RINGS	1	20134
16	WIRE; 16 GA, 20" LONG, 5/16 RING, #10 RING	1	20134-1
17	WIRE; 16 GA, 18" LONG, 5/16 RING, #10 RING	1	20135
18	SPACER; 5/8" O.D., 12 GA DOM WALL, SS	2	19265
19	SPACER BLOCK; 3/4 X 1 X 2-3/8, 7/16" HOLES	1	17284
20	FLAT WASHER; 5/8", GR.5, ZINC, SAE	2	!FWSH-063SAE
21	HEX HEAD CAP SCREW; 3/8-16 X 2-1/4, GR. 5, ZINC	2	!HHCS03816225-5
22	HEX HEAD CAP SCREW; 3/8-16 X 1-1/4, GR. 5, ZINC	2	!HHCS03816125
23	LOCK WASHER; 3/8", GR. 5, ZINC	4	!LWSH-038
24	FLAT WASHER; 3/8", GR. 5, ZINC, SAE	6	!FWSH-038SAE
25	HEX NUT; 3/8-16, GR. 5, ZINC	2	!HNUT-03816
26	HEX HEAD CAP SCREW; 1/4-20 X 1, GR. 5, ZINC	4	!HHCS02520100-5
27	LOCK WASHER; 1/4", GR. 5, ZINC	4	!LWSH-025
28	FLAT WASHER; 1/4", GR. 5, ZINC	8	!FWSH-025
29	HEX NUT; 1/4-20, GR. 5, ZINC	4	!HNUT-02520
30	HEX HEAD CAP SCREW; 5/16-18 X 3/4, GR. 5, ZINC	1	!HHCS03118075
31	LOCK WASHER; 5/16", GR. 5, ZINC	1	!LWSH-031
32	STAR WASHER; 5/16", EXT STAR, STAINLESS STEEL	1	!LWSH-031-STAR-SS

REFERENCE 25466-2 ITEM ILLUSTRATION



VENCO VENTURO INDUSTRIES LLC  
CINCINNATI, OHIO

PARTS BREAKDOWN LIST

PHE H.P.U./KIT (REF: 19401)

DATE

01-29-26

SUPERSEDES

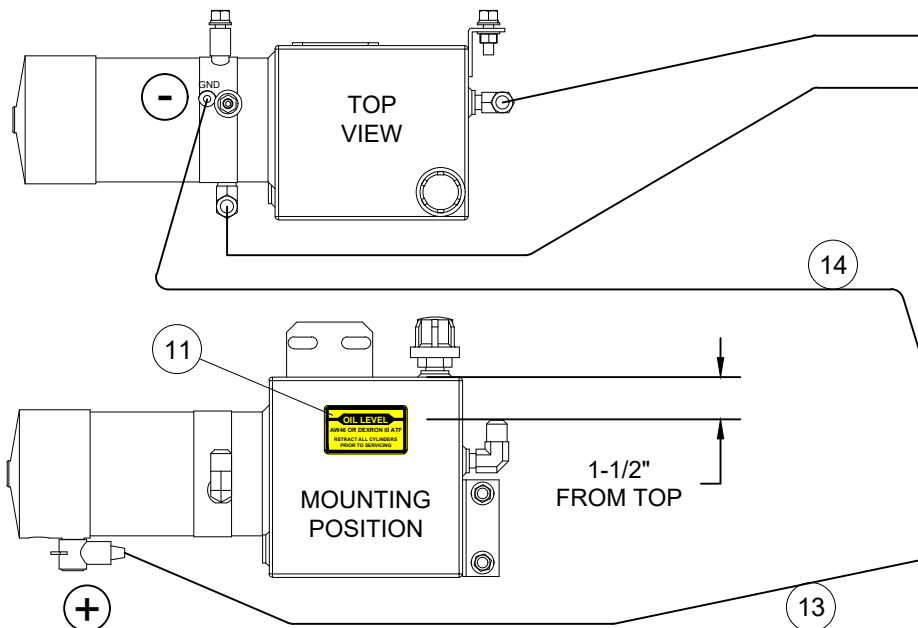
-

SECTION

C400

25465-2

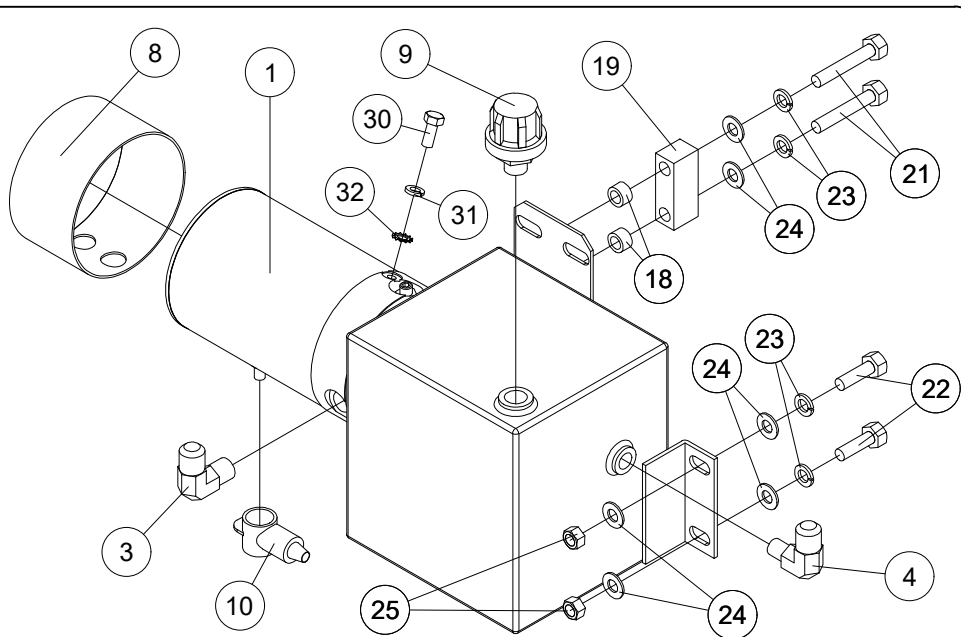
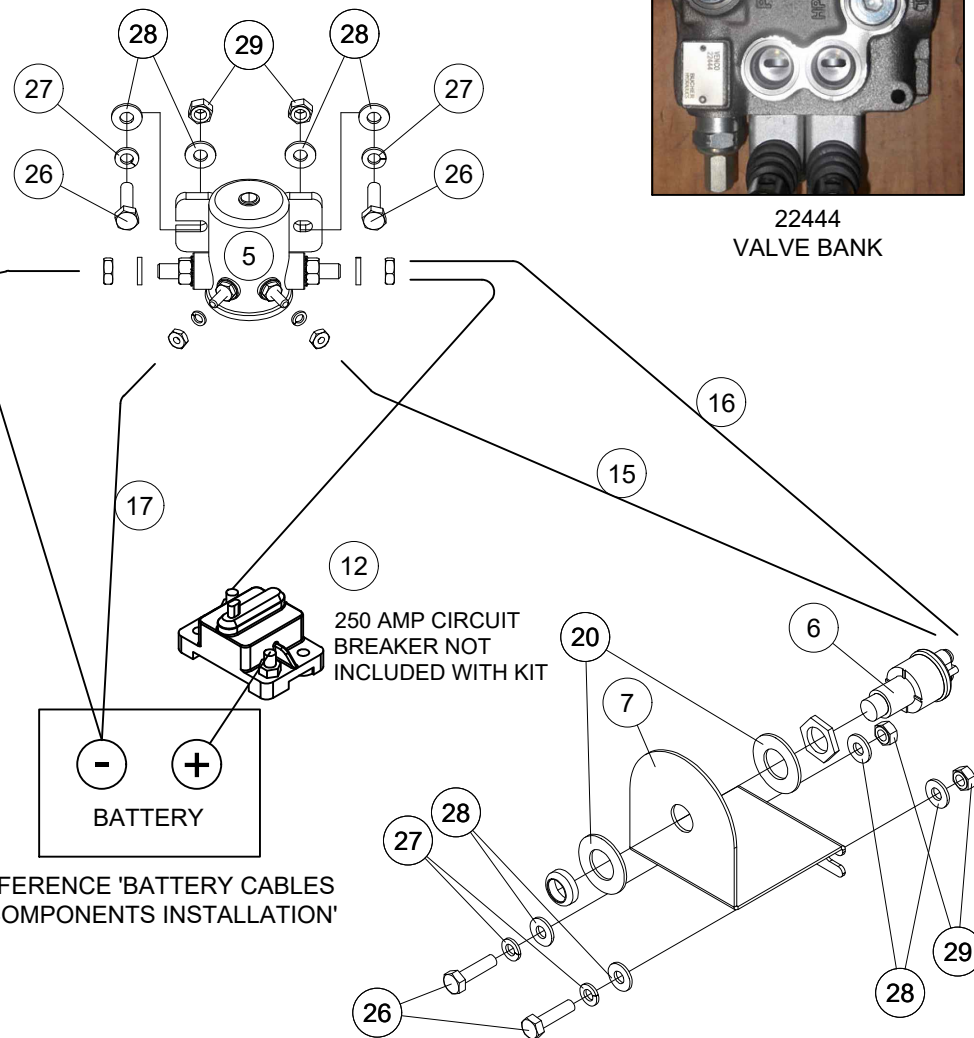
REFERENCE 25465-2 FOR ITEM LIST



PARTS WITHOUT ITEM NUMBERS INCLUDED WITH COMPONENTS



22444 VALVE BANK



REFERENCE 'BATTERY CABLES & COMPONENTS INSTALLATION'



VENCO VENTURO LLC  
CINCINNATI, OHIO

PARTS BREAKDOWN (REF: 19401)

PHE OUTRIGGERS HYDRAULIC POWER UNIT & KIT

DATE  
01-29-26

SUPERSEDES  
-

SECTION  
C400

25466-2

PHE OUTRIGGERS HYDRAULIC POWER UNIT & KIT (REF: 25477) PARTS BREAKDOWN			
#	DESCRIPTION	QTY	PART #
1	H.P.U. PUMP; PHE OUTRIGGERS	1	20456
2	HOSE ASSEMBLY; PRESSURE / RETURN, 60", 8MO-8FJ	2	22438
3	ELBOWFITTING; 90°, 8MJ-6MP	1	H2501-0806
4	ELBOWFITTING; 90°, 8MJ-4MP	1	H2501-0804
5	SWITCH; MOMENTARY PUSH-BUTTON	1	17769
6	BRACKET; SWITCH, MOMENTARY PUSH-BUTTON	1	19402
7	BREATHER CAP; RESERVOIR, H.P.U.	1	19276
8	DECAL; OIL LEVEL	1	13397
9	BATTERY CABLE; 2 GA, 25' LONG, RED	1	01025-2*25FT
10	GROUND CABLE; 2 GA, 18" LONG, BLACK	1	20133-1
11	WRE; 16 GA, 20" LONG, #10 TERMINAL RINGS	1	20134
12	WRE; 16 GA, 20" LONG, 5/16 RING, #10 RING	1	20134-1
13	FLAT WASHER; 5/8", GR.5, ZINC, SAE	2	!FWSH-063SAE
14	HEX HEAD CAP SCREW; 1/4-20 X 1, GR. 5, ZINC	2	!HHCS02520100-5
15	LOCK WASHER; 1/4", GR. 5, ZINC	2	!LWSH-025
16	FLAT WASHER; 1/4", GR. 5, ZINC	4	!FWSH-025
17	HEX NUT; 1/4-20, GR. 5, ZINC	2	!HNUT-02520



VENCO VENTURO INDUSTRIES LLC  
CINCINNATI, OHIO

## PARTS BREAKDOWN LIST

PHE H.P.U./KIT (REF: 25477)

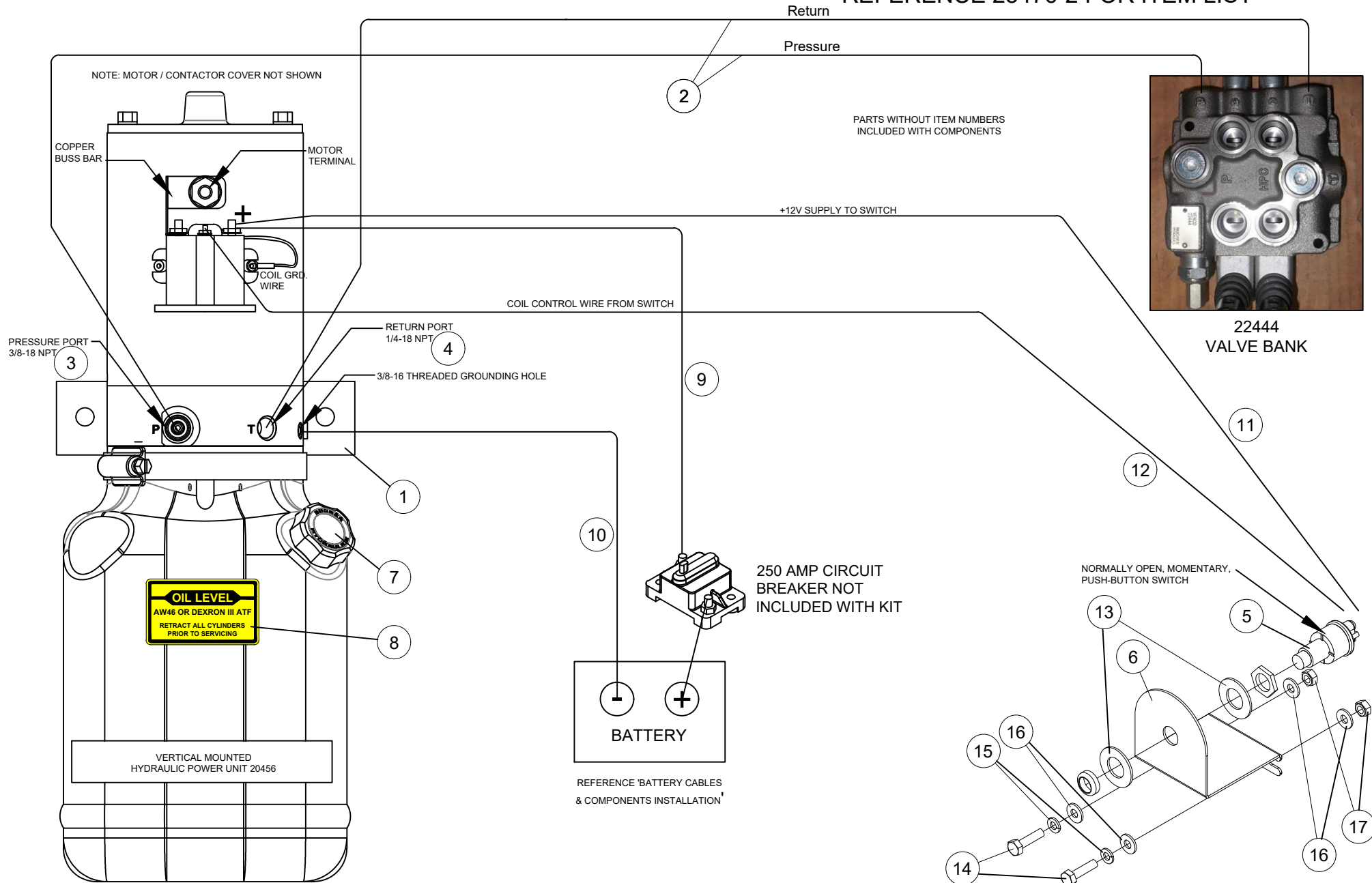
DATE  
01-29-26

SUPERSEDES  
-

SECTION  
C400

25476-2

REFERENCE 25476-2 FOR ITEM LIST



VENCO VENTURO LLC  
CINCINNATI, OHIO

PARTS BREAKDOWN (REF: 25477 w/ 20456 HYD. PWR. UNIT)

PHE OUTRIGGERS HYDRAULIC POWER UNIT & KIT

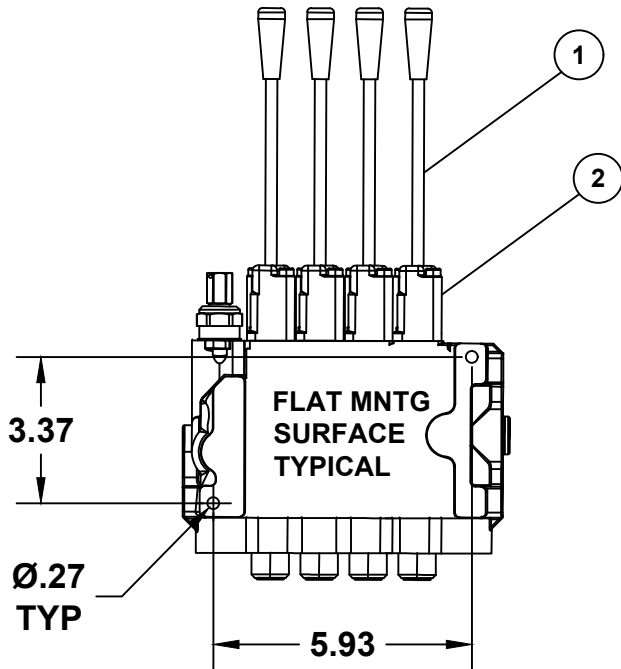
DATE  
01-29-26

SUPERSEDES  
-

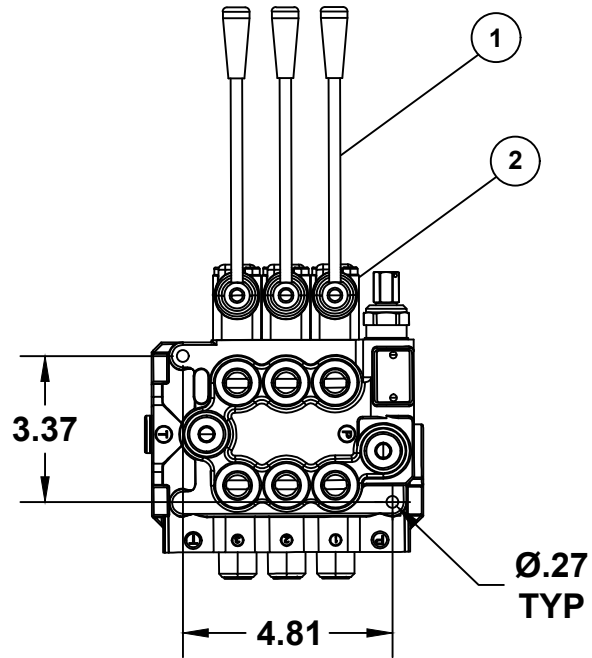
SECTION  
C400

25475-2

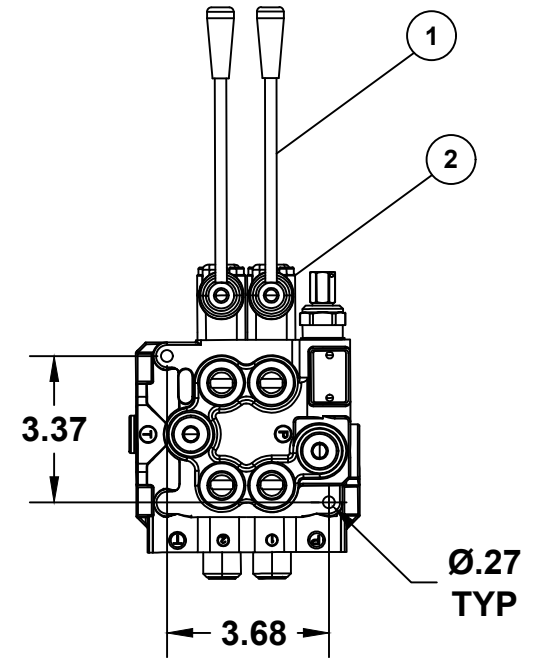
# 22555



# 25050

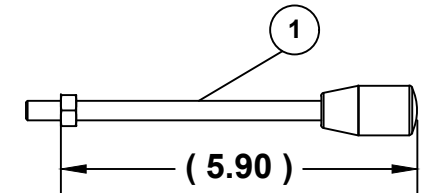
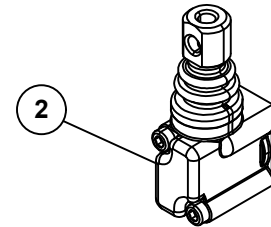


# 22444



**NOTE:**  
P/N 25219 INCLUDES  
MNTG HARDWARE

**ITEMS 3 & 4 NOT SHOWN**



ITEM NO.	SPOOL VALVE ASSEMBLIES			PART NO.	DESCRIPTION
	22444	25050	22555		
	QTY.				
1	2	3	4	25218	HANDLE, BUCHER SPOOL VALVES
2	2	3	4	25219	LEVER BOX, BUCHER SPOOL VALVES
3	2	3	4	25209	BUCHER SEAL KIT, SINGLE SECTION
4	2	3	4	25213	CENTER SPRING KIT, SINGLE SECTION



MANUFACTURING, INC.  
CINCINNATI, OHIO

TITLE  
REPLACEMENT PARTS - SPOOL VALVES  
POWERED STABILIZERS ( PH, PHX, PHXD )

DATE  
09-24-25  
SUPERSEDES  
-

PAGE  
-  
**25216**





## VENTURO CRANES LIMITED WARRANTY POLICY

Venturo products are built to last...we guarantee them.

As a purchaser of any new Venturo product covered by warranty, you will receive 1 year of the most complete coverage available...and, at no added cost to you.

### 1-Year Limited Warranty Policy

This limited policy warrants new products of Venturo to be free from defects in material and workmanship for a period of one (1) year from date of original installation. OEM products or accessories purchased by Venturo as part of or offered with our product will carry the OEM manufacturer's respective warranty. Our warranty covers:

- ***Repair or replacement of product***
- ***Labor to repair or replace product***
- ***Freight to return and/or replace product***

We shall not be liable for any contingent liabilities arising out of the improper function of any products. Warranty shall become void if the product is improperly installed, modified, damaged, abused or used for application other than intended use. There is no warranty of merchantability, fitness for a particular purpose, warranty arising from course of dealing or usage of trade, or any other implied or expressed warranty, except as made specifically herein. This warranty supersedes all previous warranties, written or implied.

### Warranty Claims

Venco Venturo Industries LLC will make a good faith effort for prompt correction or other adjustment with respect to any product, which proves to be defective after our inspection and within the warranty period. Before any repairs are attempted or before returning any product, your Venturo Distributor is required to obtain a warranty claim number. This number is necessary for any claim to be considered. To obtain a warranty claim number, Venturo requires the model and serial number. Only authorized Venturo Distributors can perform warranty. For the name and address of your local Venturo Distributor call the **Warranty Claim Department - 513-772-8448**.

**WARNING** - It is the responsibility of the installer to ensure the installation is completed according to the manufacturer's recommendations, ensure the ultimate user understands how to operate product in a safe manner, and understands the need for regular service and maintenance by an authorized Venturo Distributor. No modifications or alterations may be made to any Venturo product without the expressed written consent of Venco Venturo Industries LLC. Installation of any Venturo product must be done by an authorized Venturo Distributor, to the standards of the industry; including maintenance, service and affixing of all instruction, safety and warning decals. Users should be instructed as to the safe operation at time of delivery. Maintenance, service, operation and safety warning decals are available on request from Venco Venturo Industries LLC.

**VENCO VENTURO INDUSTRIES LLC**  
12110 BEST PLACE | CINCINNATI, OHIO 45241  
P: 800-226-2238 | F: 513-326-5427  
[www.venturo.com](http://www.venturo.com)