



# ELECTRIC CRANES ET12KXP



MAX. CAPACITY  
3,500 LBS

CRANE RATING  
12,000 FT-LBS

MAX. REACH  
16 FT

MIN. GVWR  
8,800 LBS

CONTROLS  
PROPORTIONAL  
ELECTRIC CONTROL

## FEATURES

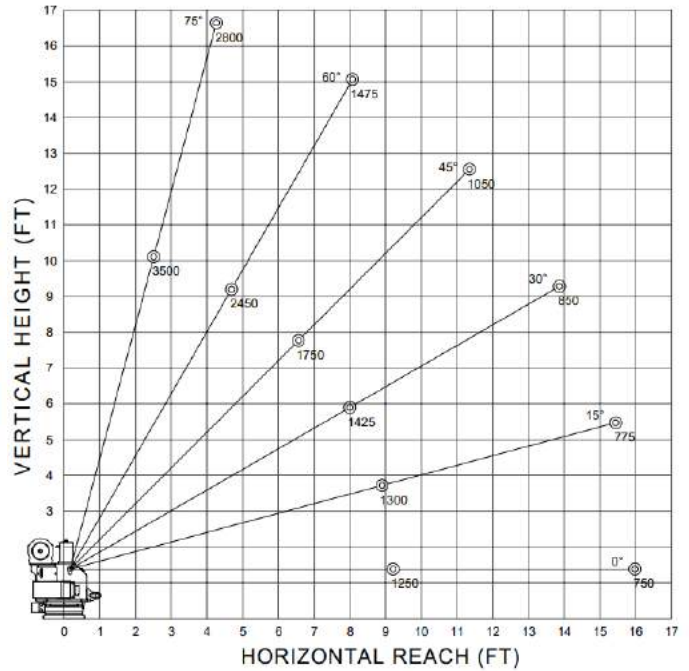
- **PROPORTIONAL CONTROLS**  
Precise load control of hydraulic functions which include rotation, elevation and extension.
- **NEW AUTO ADJUST ANTI-TWO BLOCK**  
Innovative, rugged and compact anti-two block design automatically adjusts to boom angle. Minimizes hook-to-boom tip height and is less prone to damage.
- **FULL-HYDRAULIC BOOM EXTENSION**  
No manual extensions! 9'-16' one-piece boom of hexagonal construction minimizes weight and maximizes reach and sectional stability

The ET12KXP service crane is a versatile application that is neither too large nor too small for a majority of lifting jobs. This crane has been utilized heavily in municipal/public works industry lifting anything from service equipment to fire hydrants throughout the United States. Featuring a 12,000 FT-LB crane rating and a 3,500 LB maximum capacity, the ET12KXP can be installed on trucks with a minimum 8,800 LBS GVWR. This new crane features proportional controls, single-stage, full-hydraulic boom extension, lighter-weight, easy access housing and provides consistent and uninterrupted positive and ground paths with unlimited, continuous rotation while electrical components perform better and last longer.

## SPECIFICATIONS

Lifting Capacities:	3,500 lbs
Crane Rating:	12,000 ft-lbs
Mounting Space:	14" x 14"
Stowed Height:	26-3/4"
Rope Diameter:	1/4" @ 65'
Line pull speed:	17 ft/min (Single-line) 10 ft/min (Double-line)
Max. Single-line:	1,750 lbs
Max. Double-line:	3,500 lbs
Rotation:	360° Continuous
Power Supply:	Electric 12V DC
Requirements:	#2 x 25 FT Battery Cables
Max. Reach:	16 FT
Boom Elevation:	-5° to +75°
Controls:	Electric 12V DC Proportional
Boom Extension:	9' - 16' Hydraulic
Weight:	700 LBS
Minimum Vehicle Class:	Class 2 (8,800 lbs GVWR)

## MAXIMUM LOAD CAPACITY CHART



## CRANE ACCESSORIES



### Proportional, Wireless Controller

Precise load movements and proportional control of elevation, rotation and extension functions.

### Boom Rest

Designed and engineered for Venturo service cranes, booms sit nicely in the harness with latch to stow hook during transit.



### Boom Tip Worklight

6" x 5" ultra bright, rectangular LED clear flood light has a die-cast aluminum body and impact-resistant polycarbonate lens. Features 15-high intensity LEDs that spread over a 207 meter area.

