



# ELECTRIC CRANES ET30KXX



MAX. CAPACITY  
5,000 LBS

CRANE RATING  
30,000 FT-LBS

MAX. REACH  
20 FT

MIN. GVWR  
11,000 LBS

CONTROLS  
ELECTRIC

## FEATURES

- **FULL-HYDRAULIC EXTENSION**  
The standard boom length for the ET30KXX is 20'.
- **POWERFUL DC ELECTRIC WINCH**  
The ET series winches combine a powerful permanent magnet DC motor with robust sealing with proven 3-stage, all metal geartrain. Permanent grease lubrication means years of trouble-free service.
- **MANUAL CRANE OVERRIDE**  
Each ET series crane gives the user the ability to operate and stow the crane if there is power loss through the remote.

## 5,000 LB CAPACITY AT 6 FT

The Venturo ET30KXX is a 30,000 ft-lb electric-hydraulic service crane with a 5,000 lb maximum capacity at 6 ft. This larger crane gives operators the distance and strength they need for heavier loads at a short distance. The ET30KXX includes powered, full-hydraulic extension out to 20 ft.

## SPECIFICATIONS

<b>Lifting Capacities:</b>	5,000 lbs
<b>Crane Rating:</b>	30,000 ft-lbs
<b>Mounting Space:</b>	16" x 16"
<b>Stowed Height:</b>	28-7/8"
<b>Rope Diameter:</b>	5/16" @ 80'
<b>Line pull speed:</b>	28 ft/min (Single-line) 11 ft/min (Double-line)
<b>Max. Single-line:</b>	2,500 lbs
<b>Max. Double-line:</b>	5,000 lbs
<b>Rotation:</b>	360° Continuous
<b>Power Supply:</b>	Electric 12V DC
<b>Requirements:</b>	12v DC Battery
<b>Hydraulic Req:</b>	Self-Contained w/ Power Unit
<b>Boom Elevation:</b>	-8° to +75°
<b>Controls:</b>	Electric On/Off Functions
<b>Hydraulic Power:</b>	Elevation/Rotation/Extension
<b>Boom Extension:</b>	10' - 16' - 20' Full Hydraulic
<b>Minimum Vehicle Class:</b>	Class 3 (11,000 lbs GVWR)

## OPTIONS & ACCESSORIES

### Mounting Pedestals/Boom Rests

36" pedestals for platform bodies and adjustable 18" - 26" boom rests for utility bodies.

### Outrigger Packages

ET30KX requires rear outrigger packages that include either Manual or Hydraulic.

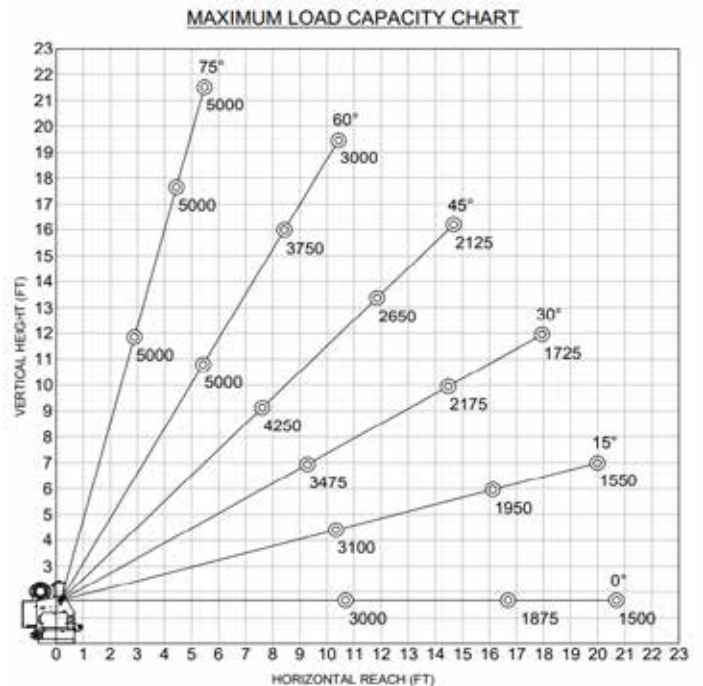
### Wireless Remote

Wireless FM remote control with onboard diagnostic system and receiver.

### Circuit Breaker Kit

A recommended 300 AMP Circuit Breaker Kit should be used for the ET30KX.

## MAXIMUM LOAD CAPACITY CHART



**Venco Venturo Industries LLC**  
 12110 Best Place | Cincinnati, Ohio 45241  
 800-226-2238 | 513-772-8448 Local  
 info@venturo.com | www.venturo.com

NOTE: All Venturo service cranes meet ANSI B30.5 and OSHA 1910.180 specifications. Specifications subject to change without notice. Copyright © 2019 Venco Venturo Industries LLC. All Rights Reserved.