



MAX. CAPACITY  
2,000 LBS

CRANE RATING  
6,000 FT-LBS

MAX. REACH  
10 FT

MIN. GVWR  
8,000 LBS

CONTROLS  
ELECTRIC

## FEATURES

### ■ MANUAL EXTENSION

The standard boom length for the ET6K is 10'.

### ■ POWERFUL DC ELECTRIC WINCH

The ET series winches combine a powerful permanent magnet DC motor with robust sealing with proven 3-stage, all metal geartrain. Permanent grease lubrication means years of trouble-free service.

### ■ MANUAL CRANE OVERRIDE

Each ET series crane gives the user the ability to operate and stow the crane if there is power loss through the remote.

## LOW-COST, LOW-WEIGHT, OPERATOR CERTIFICATION EXEMPT.

The ET6K service crane is a light-weight, cost-effective choice for a variety of industries and general service applications on any truck with a GVWR of 8,000 lbs or less. The ET6K features 2,000 lbs of maximum capacity and a 6,000 ft-lb crane rating.

## SPECIFICATIONS

<b>Lifting Capacities:</b>	2,000 lbs
<b>Crane Rating:</b>	6,000 ft-lbs
<b>Mounting Space:</b>	10-1/2" x 10-1/2"
<b>Stowed Height:</b>	24-1/4"
<b>Rope Diameter:</b>	3/16" @ 50'
<b>Line pull speed:</b>	30 ft/min (Single-line) 18 ft/min (Double-line)
<b>Max. Single-line:</b>	1,000 lbs
<b>Max. Double-line:</b>	2,000 lbs
<b>Rotation:</b>	360° Continuous
<b>Power Supply:</b>	Electric 12V DC
<b>Requirements:</b>	12v DC Battery
<b>Hydraulic Req:</b>	Self-Contained w/ Power Unit
<b>Boom Elevation:</b>	-8° to +75°
<b>Controls:</b>	Electric 12V DC On/Off Function
<b>Notes:</b>	OSHA Certification Exempt
<b>Boom Extension:</b>	Manual: 6' - 10'
<b>Minimum Vehicle Class:</b>	Class 2 (8,000 lbs GVWR)

## OPTIONS & ACCESSORIES

### Mounting Pedestals/Boom Rests

21" and 36" pedestals for platform bodies and adjustable 13" - 19" boom rests for utility bodies.

### Outrigger Packages

ET6K requires rear outrigger packages that include either Manual-Out/Manual-Down.

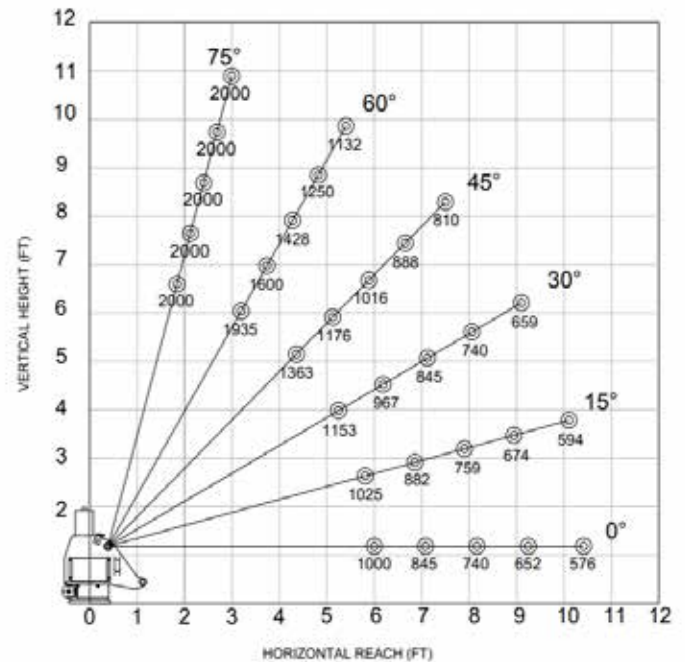
### Wireless Remote

Wireless FM remote control with onboard diagnostic system and receiver.

### Circuit Breaker Kit

A recommended 250 AMP Circuit Breaker Kit should be used for the ET6K.

## MAXIMUM LOAD CAPACITY CHART



NOTE: All Venturo service cranes meet ANSI B30.5 and OSHA 1910.180 specifications. Specifications subject to change without notice. Copyright © 2019 Venco Venturo Industries LLC. All Rights Reserved.