



HYDRAULIC CRANES HT45KX

EQUIPPED WITH



MAX. CAPACITY
7,800 LBS

CRANE RATING
45,600 FT-LBS

MAX. REACH
20 FT | 25 FT

MIN. GVWR
16,000 LBS

CONTROLS
VLC™

FEATURES

- **FULL-HYDRAULIC EXTENSION**
The HT45KX-VLC offers (2) different boom lengths of 20 & 25 ft.
- **NEW AUTO ADJUST ANTI-TWO BLOCK**
Innovative, rugged and compact anti-two block design automatically adjusts to boom angle. Minimizes hook-to-boom tip height and is less prone to damage.
- **NEW BOOM TIP WORKLIGHT**
Optional worklight that automatically adjusts to the boom angle so you can follow your load anytime.

The Venturo HT45KX with VLC™ controls features a maximum capacity of 7,800 lb. **Venturo's new Electronic Crane Control Management System** provides added safety and benefits for crane operators. Benefits include a standard, wireless, pistol-grip controller, overload protection which controls and prevents any type of overload, LCD Display Screen alerts, transmitter handle vibrations, green/yellow/red alert lights under boom, and corresponding lights on the receiver. The LCD display shows percentage of load, boom angle in degrees and percentage of total capacity during crane operation. The VLC™ system also provides vehicle stability and grade control.

SPECIFICATIONS

Lifting Capacities:	7,800 lbs
Crane Rating:	45,600 ft-lbs
Mounting Space:	17" x 17"
Stowed Height:	36-5/8"
Rope Diameter:	3/8" @ 100'
Line pull speed:	60 ft/min @ 12 GPM (Single-line) 9 ft/min @ 3 GPM
Max. Single-line:	3,900 lbs
Max. Double-line:	7,800 lbs
Rotation:	400°
Power Supply:	PTO & Pump Required
Requirements:	12 gpm @ 3,000 psi
Hydraulic Req:	25 or 40 gal. reservoir
Boom Elevation:	-8° to +75°
Controls:	VLC™ (Venturo Logic Controls) Standard Wireless Remote
Boom Extension 1:	10' - 16' - 20' Full Hydraulic
Boom Extension 2:	12' - 18' - 25' Full Hydraulic
Minimum Vehicle Class:	Class 5 (16,001 - 19,500 lbs GVWR)

VLC™ SYSTEM CONTROLS



Multiple Safety and Capacity Alerts

Green/Yellow/Red alert light located on the underside of the boom.



Overload/Stability Safety

The VLC system controls and prevents any type of overload on the crane and also provides stability and grade control.

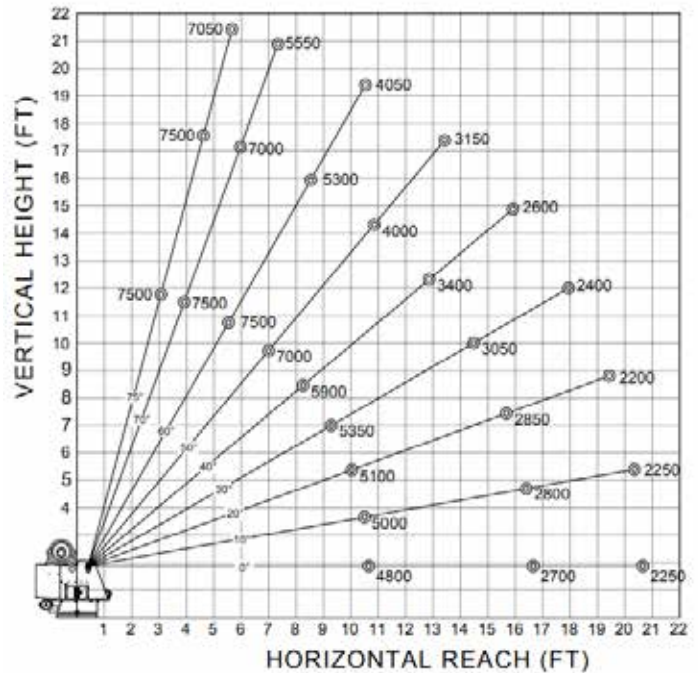


Wireless Remote

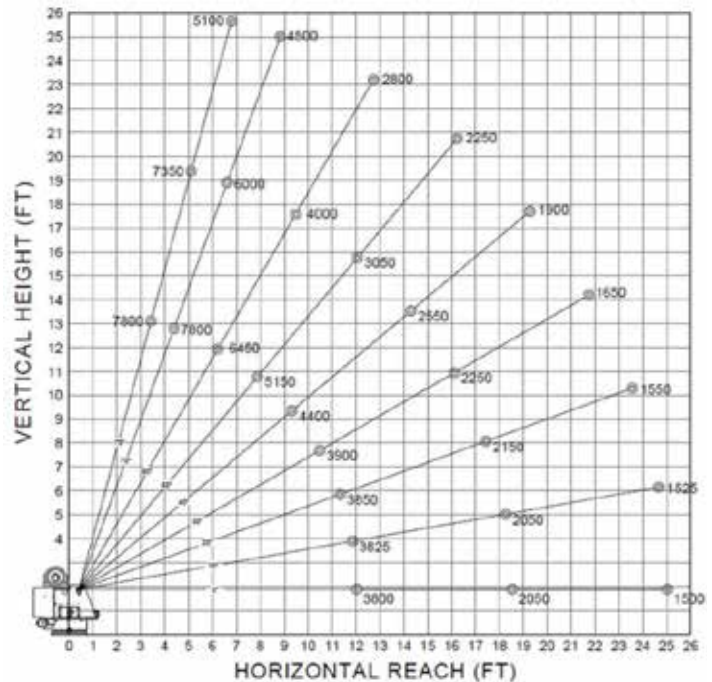
The wireless remote, pistol-grip controller is a standard feature as part of the VLC™ system for ALL proportionally-controlled hydraulic Venturo service cranes.

MAXIMUM LOAD CAPACITY CHART

HT45KX-20' Boom Chart



HT45KX-25' Boom Chart



NOTE: All Venturo service cranes meet ANSI B30.5 and OSHA 1910.180 specifications. Specifications subject to change without notice. Copyright © 2019 Venco Venturo Industries LLC. All Rights Reserved.