



# HYDRAULIC CRANES HT55KX (30')



EQUIPPED WITH



MAX. CAPACITY  
8,500 LBS

CRANE RATING  
55,000 FT-LBS

MAX. REACH  
30 FT

MIN. GVWR  
20,500 LBS

CONTROLS  
VLC™

## FEATURES

- **FULL-HYDRAULIC EXTENSION**  
The standard boom length for the HT55KX is 30 ft, perfect to reach certain areas at the jobsite.
- **NEW AUTO ADJUST ANTI-TWO BLOCK**  
Innovative, rugged and compact anti-two block design automatically adjusts to boom angle. Minimizes hook-to-boom tip height and is less prone to damage.
- **NEW BOOM TIP WORKLIGHT**  
Optional worklight that automatically adjusts to the boom angle so you can follow your load anytime.

The Venturo HT55KX with VLC™ controls features a maximum capacity of 8,500 lb. **Venturo's new Electronic Crane Control Management System** provides added safety and benefits for crane operators. Benefits include a standard, wireless, pistol-grip controller, overload protection which controls and prevents any type of overload, LCD Display Screen alerts, transmitter handle vibrations, green/yellow/red alert lights under boom, and corresponding lights on the receiver. The LCD display shows percentage of load, boom angle in degrees and percentage of total capacity during crane operation. The VLC™ system also provides vehicle stability and grade control.

## SPECIFICATIONS

|                               |  |
|-------------------------------|--|
| <b>Lifting Capacities:</b>    | 8,500 lbs  |
| <b>Crane Rating:</b>          | 55,000 ft-lbs  |
| <b>Mounting Space:</b>        | 16" x 16"  |
| <b>Stowed Height:</b>         | 36-7/8"  |
| <b>Rope Diameter:</b>         | 3/8" @ 100'  |
| <b>Line pull speed:</b>       | 67 ft/min @ 12 GPM (Single)<br>33 ft/min @ 12 GPM (Double) |
| <b>Max. Single-line:</b>      | 4,250 lbs  |
| <b>Max. Double-line:</b>      | 8,500 lbs  |
| <b>Rotation:</b>              | 400°   |
| <b>Power Supply:</b>          | PTO & Pump Required  |
| <b>Requirements:</b>          | 12 gpm @ 3,000 psi   |
| <b>Hydraulic Req:</b>         | 25 gal. reservoir  |
| <b>Boom Elevation:</b>        | -8° to +75°  |
| <b>Controls:</b>              | VLC™ (Venturo Logic Controls)<br>Standard Wireless Remote  |
| <b>HT55KX Ext.</b>            | 13.5' - 20' - 30' Full Hydraulic                           |
| <b>Hydraulic Req:</b>         | 12 GPM with 25 gal. reservoir                              |
| <b>Minimum Vehicle Class:</b> | Class 6<br>(20,500 lbs GVWR)                               |



## VLC™ SYSTEM CONTROLS



### Multiple Safety and Capacity Alerts

Green/Yellow/Red alert light located on the underside of the boom.

### Overload/Stability Safety

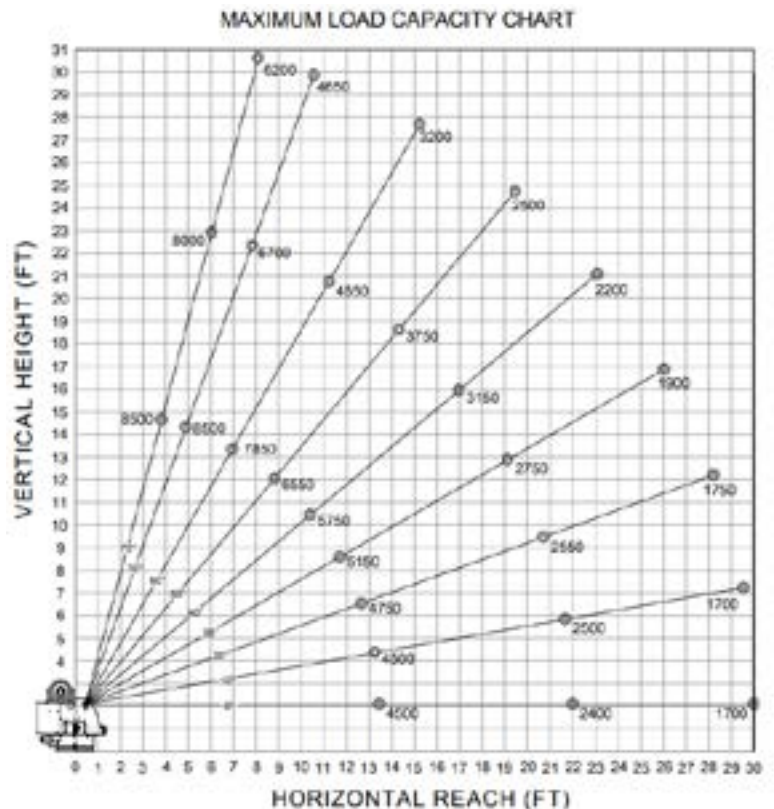
The VLC system controls and prevents any type of overload on the crane and also provides stability and grade control.



### Wireless Remote

The wireless remote, pistol-grip controller is a standard feature as part of the VLC™ system for ALL proportionally-controlled hydraulic Venturo service cranes.

## MAXIMUM LOAD CAPACITY CHART



**Venco Venturo Industries LLC**  
 12110 Best Place | Cincinnati, Ohio 45241  
 800-226-2238 | 513-772-8448 Local  
[info@venturo.com](mailto:info@venturo.com) | [www.venturo.com](http://www.venturo.com)

NOTE: All Venturo service cranes meet ANSI B30.5 and OSHA 1910.180 specifications. Specifications subject to change without notice. Copyright © 2019 Venco Venturo Industries LLC. All Rights Reserved.