



HYDRAULIC CRANES HT55KX

EQUIPPED WITH



MAX. CAPACITY
8,500 LBS

CRANE RATING
55,000 FT-LBS

MAX. REACH
20 FT | 25 FT

MIN. GVWR
20,500 LBS

CONTROLS
VLC™

FEATURES

■ FULL-HYDRAULIC EXTENSION

The standard boom length for the HT55KX is 20' with an option for 25' which is perfect to reach certain areas at the jobsite.

■ NEW AUTO ADJUST ANTI-TWO BLOCK

Innovative, rugged and compact anti-two block design automatically adjusts to boom angle. Minimizes hook-to-boom tip height and is less prone to damage.

■ NEW BOOM TIP WORKLIGHT

Optional worklight that automatically adjusts to the boom angle so you can follow your load anytime.

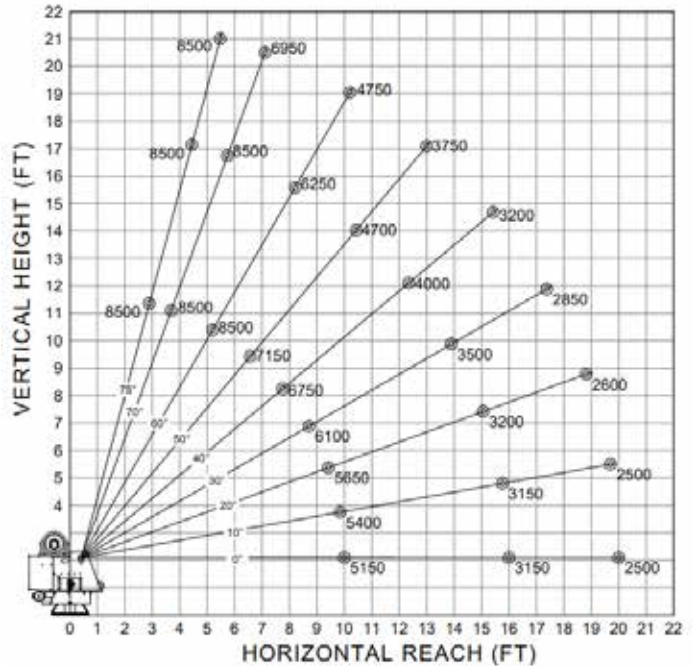
The Venturo HT55KX with VLC™ controls features a maximum capacity of 8,500 lb. **Venturo's new Electronic Crane Control Management System** provides added safety and benefits for crane operators. Benefits include a standard, wireless, pistol-grip controller, overload protection which controls and prevents any type of overload, LCD Display Screen alerts, transmitter handle vibrations, green/yellow/red alert lights under boom, and corresponding lights on the receiver. The LCD display shows percentage of load, boom angle in degrees and percentage of total capacity during crane operation. The VLC™ system also provides vehicle stability and grade control.

SPECIFICATIONS

Lifting Capacities:	8,500 lbs
Crane Rating:	55,000 ft-lbs
Mounting Space:	16" x 16"
Stowed Height:	36-7/8"
Rope Diameter:	3/8" @ 100'
Line pull speed:	67 ft/min @ 12 GPM (Single-line) 33 ft/min @ 12 GPM
Max. Single-line:	4,250 lbs
Max. Double-line:	8,500 lbs
Rotation:	400°
Power Supply:	PTO & Pump Required
Requirements:	12 gpm @ 3,000 psi
Hydraulic Req:	25 gal. reservoir
Boom Elevation:	-8° to +75°
Controls:	VLC™ (Venturo Logic Controls) Standard Wireless Remote
HT55KX Ext.	10' - 16' - 20' Full Hydraulic
HT55KX-25 Ext.	12' - 18' - 25' Full Hydraulic
Hydraulic Req:	12 GPM with 25 gal. reservoir

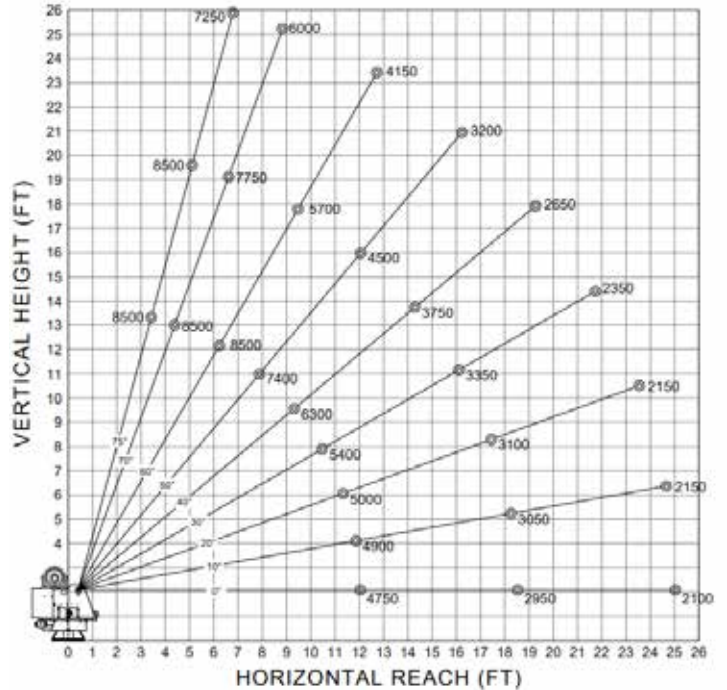
MAXIMUM LOAD CAPACITY CHART

HT55KX-20' Boom Chart



HT55KX-25' Boom Chart

MAXIMUM LOAD CAPACITY CHART



VLC™ SYSTEM CONTROLS



Multiple Safety and Capacity Alerts

Green/Yellow/Red alert light located on the underside of the boom.



Overload/Stability Safety

The VLC system controls and prevents any type of overload on the crane and also provides stability and grade control.



Wireless Remote

The wireless remote, pistol-grip controller is a standard feature as part of the VLC™ system for ALL proportionally-controlled hydraulic Venturo service cranes.



Venco Venturo Industries LLC
 12110 Best Place | Cincinnati, Ohio 45241
 800-226-2238 | 513-772-8448 Local
info@venturo.com | www.venturo.com

NOTE: All Venturo service cranes meet ANSI B30.5 and OSHA 1910.180 specifications. Specifications subject to change without notice. Copyright © 2019 Venco Venturo Industries LLC. All Rights Reserved.