

VAN CRANES VC750FB



MAX. CAPACITY
750 LBS

CRANE RATING
1,875 FT-LBS

MAX. REACH
2 FT 6 IN

APPLICATIONS
MULTIPLE

CONTROLS
ELECTRIC

FEATURES

■ COMPACT STORAGE

The Venturo VC750FB utilizes very little space in the side-door of the Ford Transit. This crane can also be installed in the rear or side doors of Sprinter vans also. With a 63-3/8" height, the crane must be used in taller van applications.

PERFECT FOR THE SIDE-CARGO DOOR.

The VC750FB van crane includes a 2 ft, 6 in fixed, boom-length with a maximum capacity of 750 lbs for the Euro-style work van side-door. The VC750FB is perfect for Ford Transit side-door applications because of the higher roof height. The boom folds down to allow for more cargo space when the crane is not in use. Fold-down boom offers a secure storage position and easy access.

SPECIFICATIONS

Lifting Capacities:	750 lbs
Crane Rating:	1,875 ft-lbs
Mounting Space:	12" x 12"
Stowed Height:	63-3/8"
Rope Diameter:	3/16" @ 25'
Line pull speed:	14 ft/min
Max. Single-line:	750 lbs
Boom Extension:	Up to 2',6
Rotation:	Manual with Band Brake
Power Supply:	Electric 12V DC
Requirements:	12v DC Battery
Circuit Breaker:	150 AMP Recommended
Boom Elevation:	1-position, fixed
Controls:	12V DC On/Off Winch

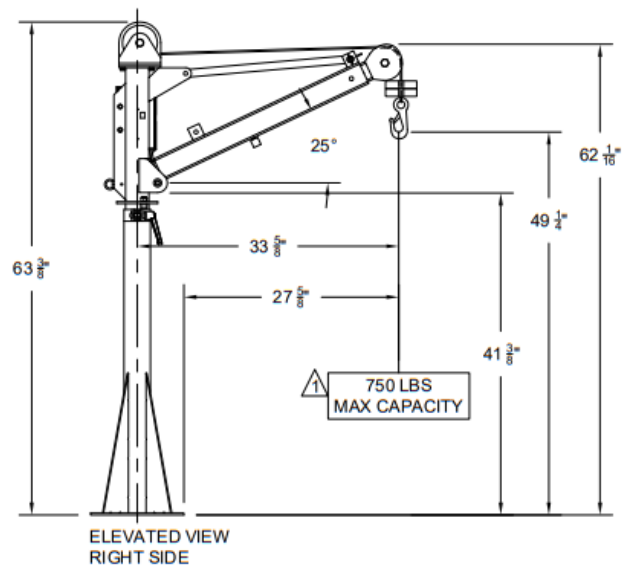
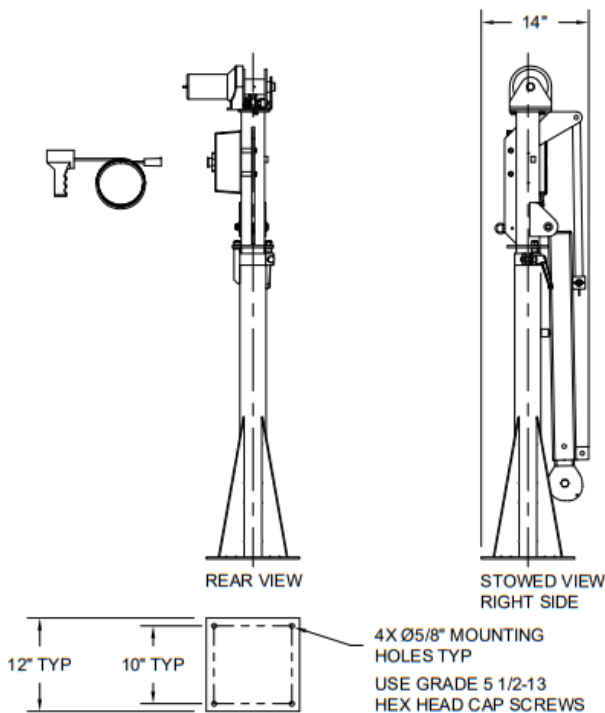
OPTIONS & ACCESSORIES

Master Disconnect Switch

Crane includes a master disconnect switch kit which allows the user to disconnect the power to the crane during transit and when not in use.



VC750FB DIMENSIONS



Venco Venturo Industries LLC
 12110 Best Place | Cincinnati, Ohio 45241
 800-226-2238 | 513-772-8448 Local
info@venturo.com | www.venturo.com

NOTE: All Venturo service cranes meet ANSI B30.5 and OSHA 1910.180 specifications. Specifications subject to change without notice. Copyright © 2019 Venco Venturo Industries LLC. All Rights Reserved.